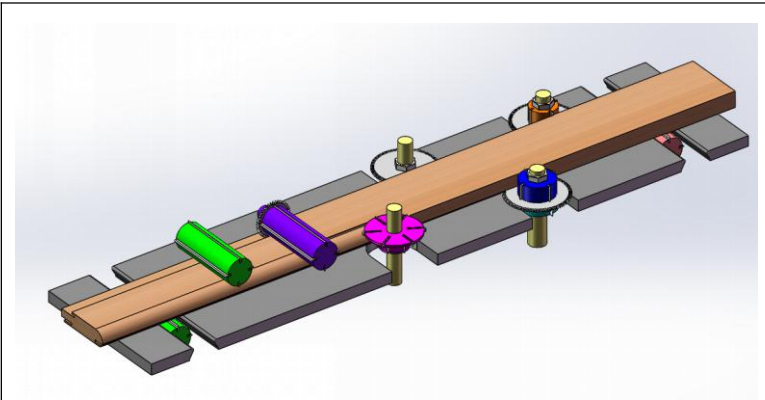
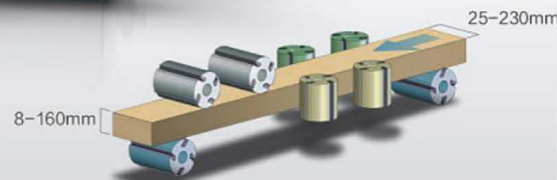
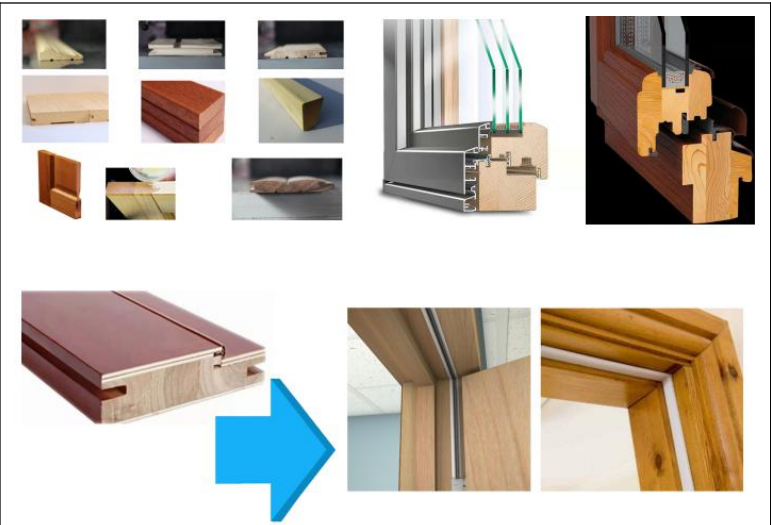


M823 8 Spindle Moulder

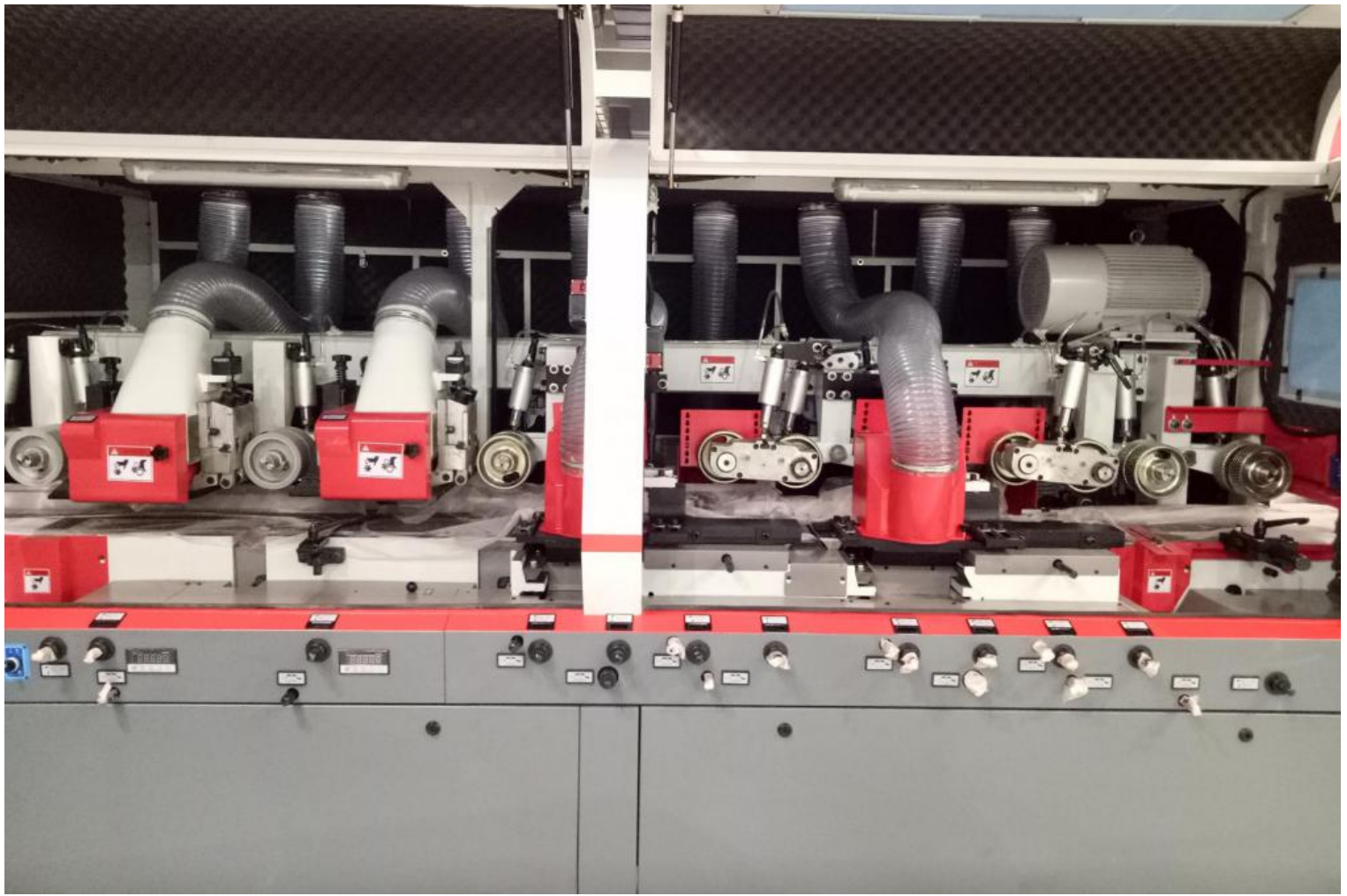
-----Professional industrial



Versatile choice for location of various cutter, blade



For even all complex works



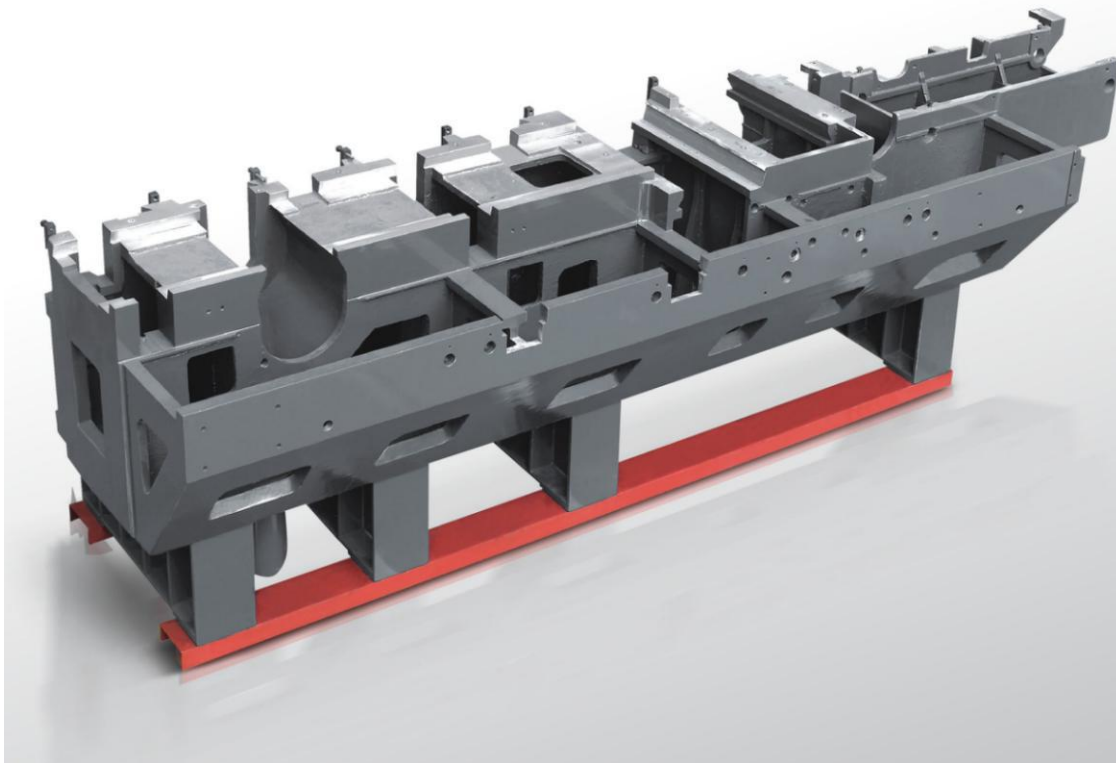
823V HEAVY DUTY HIGH PRECISION

Axtra four side moulder is well known as the highest quality life long use and highest precision, if you want a robust heavy duty moulder, Axtra is a wise choice, with whole cast iron body, precise processing and apply premium installation spare, you can expect a perfect moulding finish effect which makes your wood products competitive, what you are interested in is a solid heavy duty machine which is running quiet, stable, safe and high precision.

823V is born for complex work

It can do all the products like floor, door, stair, profile moulding, corner rounding or for joinery, and due to each left and right got 2 spindle, it can do heavy and precision side moulding like door frame, European windows and some complex moulding shape.





SOLID CAST IRON BODY

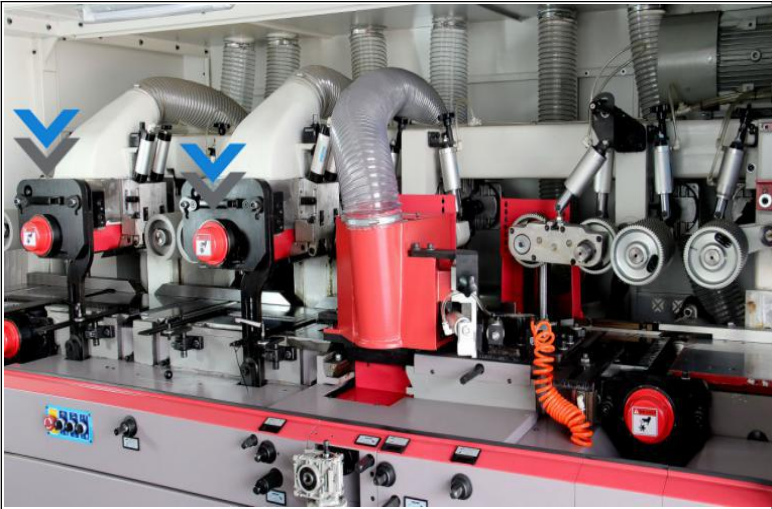
What is behind a life long use stable moulder

Solid cast iron with a ageing treatment is key point why Aextra moulder works so stable and effectively avoid and vibration under heavy duty moulding, all is for a life-long machine. To avoid any processing error, we process the 3 surface at one cycle, this is reason why Aextra Moulder gives you a so precise moulding.

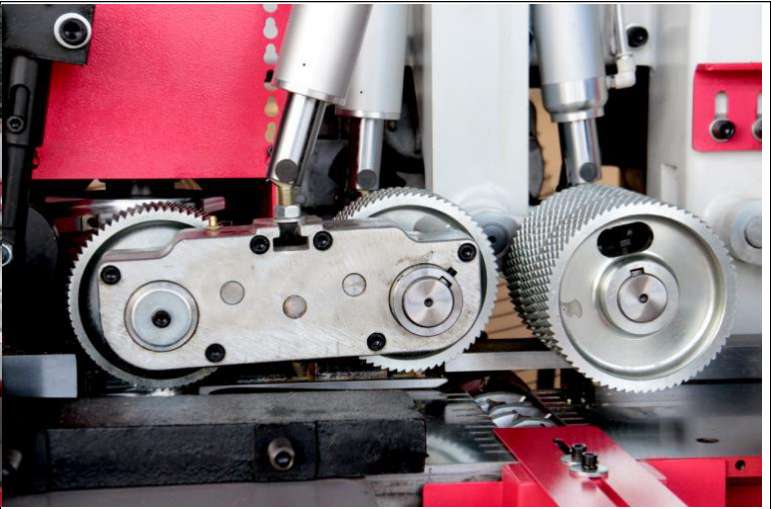
ONE CYCLE PROCESSING OF 3 SURFACE

To ensure the accuracy of entire machine





Top spindle tail clock system with hydraulic lock from Germany(Optional) Effectively avoid vibration for big width moulding, this is a patent tech of Aextra moulder

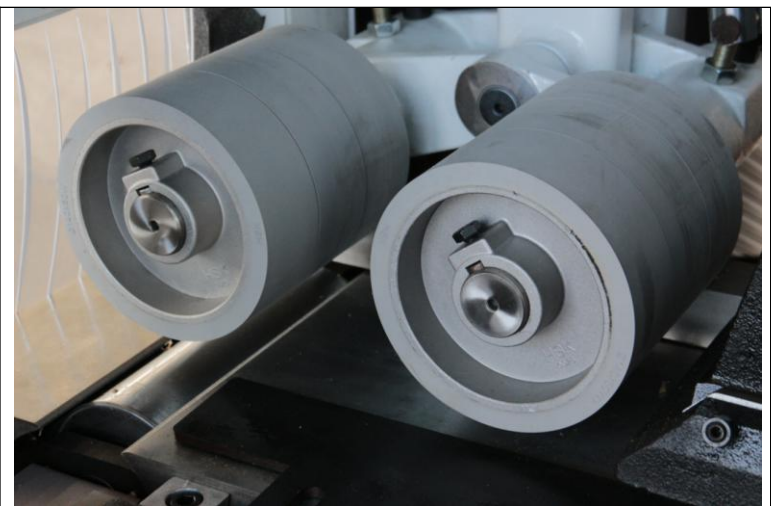


Short material feeding system(standard) is very useful for short material feeding to make moulding more stable

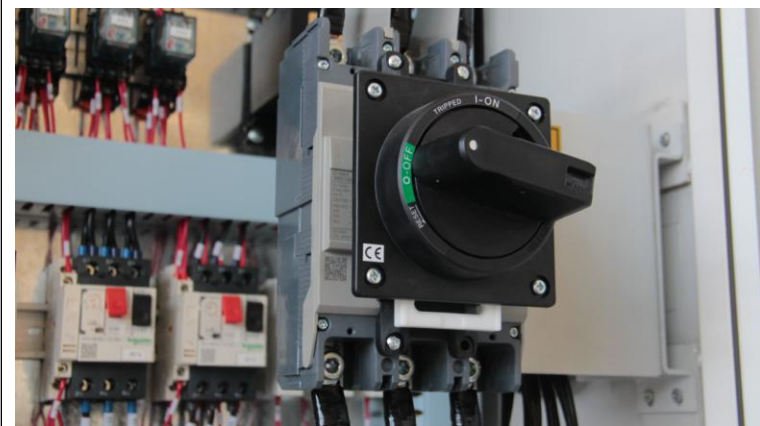
FINE QUALITY



Hard chrome mirror effect feeding table not only anti-rust, but also for a smooth feeding



Silicon rubber roller after the final bottom spindle to well protect finish moulding products

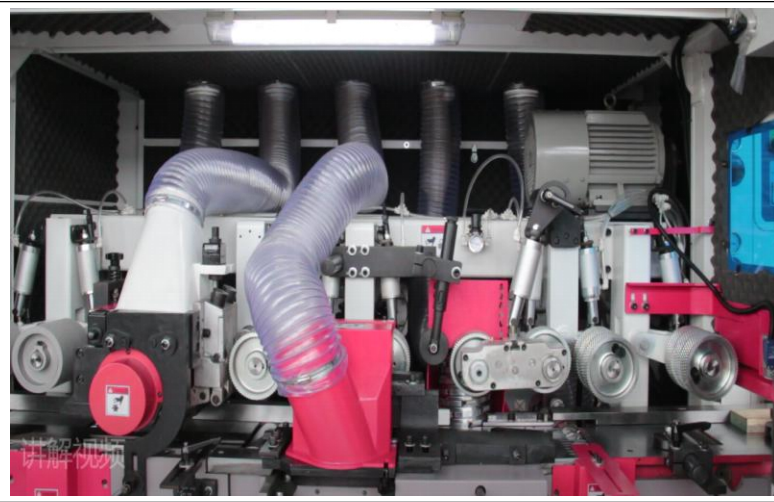


This moulder got CE approval, all electric spare parts are from Europe with very strict protection





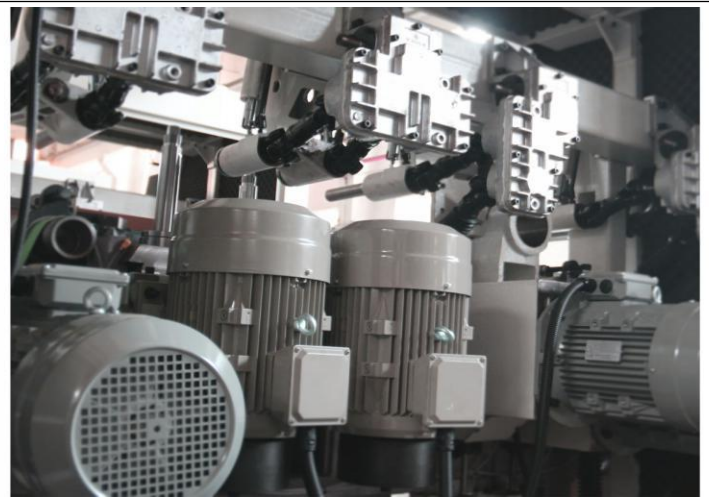
Whole machine inside is cover with noise consumption foam to give you a very quit working condition



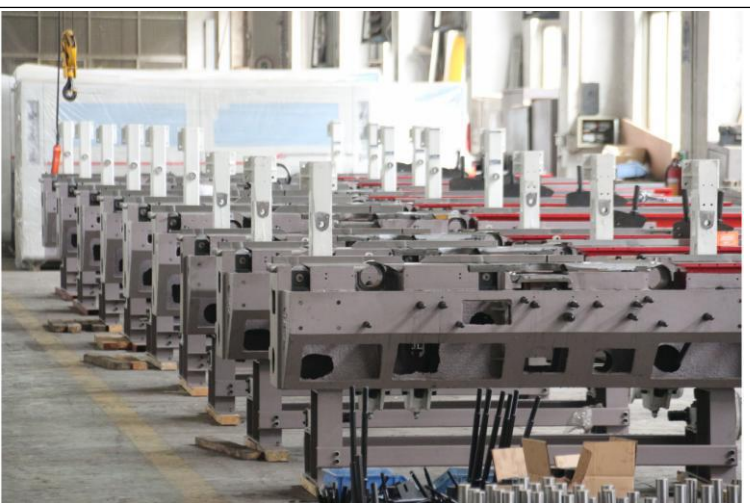
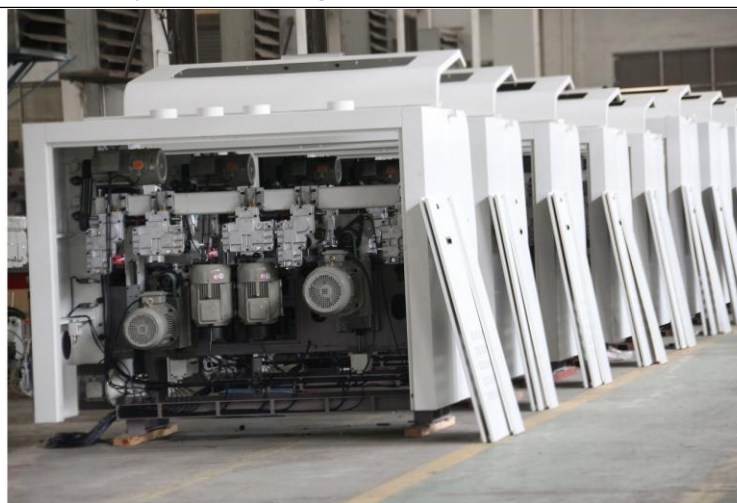
There is a light with in the machine, when you do tuning at dark condition, it will be very friendly useful



Professional gear synchronic system makes feeding roller running at same speed to give a smooth feeding and further ensure the precise moulding work



Powerful life long use motor from Siemens oem factory.



MOULDING 4SIDE



ALL IS ENSURE A PERFECT MOULDING

AXTRA MOULDER-

YOU DESERVE A HIGH QUALITY MOULDER WITH ALL HUNDRES OF CUSTOMER
FROM 50 COUNTRIES ALL OVER THE WORLD

Parameter		
Main data for machine	Working width	25-230mm
	Working thickness	8-160mm
	Feeding table length	1790mm
	Feeding speed	6-36m/min
	Diameter of spindle	40/optional 50mm
	Running speed of spindle	6500rpm
	Air pressure	0.6MPa
Standard fitting Motor power	First bottom spindle	7.5kW=10HP
	Right spindle	7.5kW
	Left spindle	7.5kW
	Second right spindle	7.5kW
	Second left spindle	7.5kW
	First top spindle	11kW=14.6HP
	Second top spindle	7.5kW
	Second bottom spindle	7.5kW
	Top spindle lifting	0.55kW=0.75HP
	Feeding beam lifting	1.1kW=1.46HP
	Feeding motor	7.5kW=10HP speed variable type
	Total motor power	72.1kW=96HP
Knife diameter for each spindle	First bottom spindle	125mm
	Right spindle	125-180mm
	Left spindle	125-180mm
	Top spindle	125-180mm
	Second bottom spindle	125-200mm
Other details	Feeding roller diameter	140mm
	Dust collection hose	140mm
	Overall size	L5070*W1620*1950mm
	Net Weight	4550kgs

