

**DALE & TRENT**  
**D7** *Simmentals*  
**RANCH** **≥**

**PLEASANTON, NE**

**AND**



**BURWELL, NE**

*Second Annual Production Sale*

---

**WEDNESDAY**

**JANUARY 28, 2026**

---

**1:00PM CST**

**Dale & Trent Ranch  
Pleasanton, NE**

**Watch and  
Bid Live on**

***DVAuction***



Welcome to the Second Annual Dale & Trent Ranch Simmentals bull sale held in conjunction with Nelson Herefords. We are very pleased with the bulls that we have chosen for your consideration. As the registered herd continues to grow as well as our continuation of implementing artificial insemination, embryo transfer and the purchase of some excellent herd sires, the genetic improvement of the cow herd is moving forward at a rapid pace.

This year we implemented yet another tool for you as producers to use while evaluating the bulls. We had the bulls genomically enhanced EPD's evaluated through Allied Genetic Resources RightChoice program and the ones that qualified were given the G+, ACE, and ATM logos. You will be able to find the information for each logo on page 3. We have also decided to have the sale live with DVAuction this year for online bidding. Brett Nelson and I wanted to give everyone the opportunity to view and bid on the cattle in the most convenient way possible.

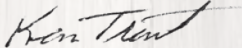
Another new tool we have implemented was entering into an extensive embryo transfer program this year and you will see several flush brothers out of our 053C donor cow by KBHR Honor H060 in the sale. The 2026 calf crop will have a lot more diversity in ET calves and this spring we will transfer embryos from some of the very best females and herd sires in the entire breed. We are constantly investing in every opportunity to bring you some of the very best genetics available.

It is our goal to provide bulls that will move your program forward by providing genetics to produce calves that will come easy with good growth and vigor as well as produce productive replacement quality females that will stay in your herd for a long time.

Thank you once again and feel free to call me anytime or come out to the ranch to view the cattle in person. We are very, very excited about the direction of the program and I welcome you to stop out any time.

Sincerely,

Ken Trent



Dale & Trent Ranch

---

Fellow Cattlemen,

Welcome to our bull and female sale. We appreciate and are grateful to our customers and friends who have supported us and look forward to meeting new ones. The cattle business is in exciting times with high quality cattle demanding a premium.

Our goal remains to build a high performing cowherd with limited inputs and high performing expectations. This carries over well for both registered and commercial operations. Our goal is to raise cattle that will work for you and will make your ranch more profitable.

Thank you for your interest in our program. We love the cattle industry and are very excited to share this year's offering. If you are unable to attend the sale, we are happy to help you select cattle to fit your operation.

We appreciate your business and hope to see you on sale day. Our sale will also be broadcast on DVAuction. See you soon.

The Nelson's

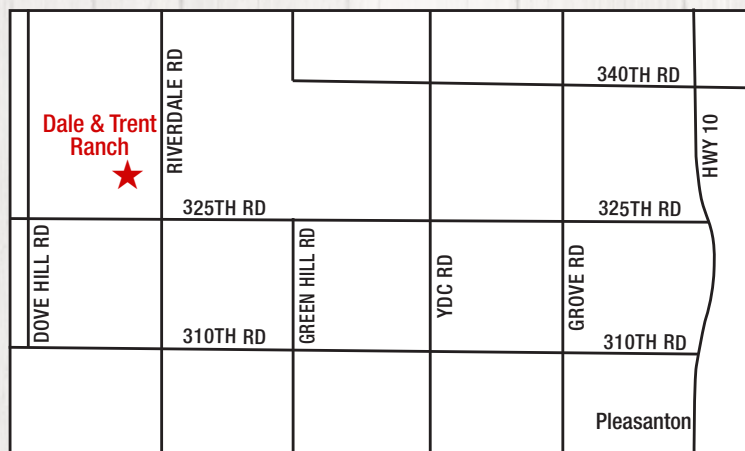
Brett & Errin Nelson

**Ken Trent 308-293-5758**

**Brett Nelson 308-214-0334**



**Sale Location: 22682 325th Rd · Pleasanton, NE 68866**



**Sale Schedule: Wednesday, January 28, 2026**

**11am CST Cattle Available for Viewing**

**12pm CST Complimentary Lunch Served**

**1pm CST Sale Begins**

**Sale Day Contacts:**

**Ken Trent ..... 308-293-5758**

**John Geisler ..... 308-440-6164**

**Brett Nelson ..... 308-214-0334**

**John Nelson ..... 308-214-1272**

**Drew Gaffney ..... 308-872-1105**

**Austin Brandt ..... 712-621-1829**

**Pacen Trent ..... 308-224-6015**

**Consulting Veterinarians:**

**Broken Bow Animal Hospital**

**McKenzie Hendricks DVM**

**308-872-5281**

**(Dale & Trent Ranch)**

**Burwell Veterinary Clinic**

**Marty Archibeque DVM**

**308-346-4145**

**(Nelson Herefords)**

**Consulting Nutritionists:**

**Kent Feeds**

**Keith Paitz**

**308-222-0369**

**Purina Feeds**

**Bob Reagan**

**402-340-3183**

**Acknowledgments:**

**Jack Ward, American Hereford Association**

**Shane Bedwell, American Hereford Association**

**Hannah Pearson, Manager of Nebraska Hereford Association**

**Hotel Accommodations:**

**Kearney & Grand Island, NE**

**have multiple hotels**

**and restaurants**

**Broken Bow, NE**

**Arrow Hotel—308-252-5094**

**Boarders Inn—308-661-0486**



# Improved Buying Confidence with Greater Genomic **ASSURANCE**

Access to more and better information has always been key to making wise decisions. The evolution and improvement of genetic evaluation tools too has given us an ever-clearer picture of the true genetic makeup of cattle and thus a better view of the value proposition. RightMate, powered by Top Genomics LLC is taking the evaluation of genetics and genomics one giant step further. By combining specific genomic information with the long-proven value of EPDs, this new advancement in technology improves our depth and precision when evaluating the actual ability to transmit value and profit.

The 3 Accreditation Logos below are designed to simplify bull selection and improve buyer confidence by more accurately describing the genetics offered and by reducing risk. What this means to you as a customer is a much greater assurance that you are getting both what you want and need from the genetics you purchase. What it means to your seedstock provider is access to RightMate technology that simply sets them apart from the rest of the industry.



**ACCREDITED GENOMIC PLUS** – For the majority of producers who simply need consistent and balanced genetic improvement, without genomic setbacks, G+ Accredited bulls should be on your list for premium purchase. These sires will absolutely move you forward for both cost reduction and income producing traits and substantially reduce risk when compared to all other evaluation programs. It's simple, the right genes are in these bulls to help secure a profitable future and they have great EPDs to match!



**ACCREDITED CALVING EASE** – Simply find bulls with the ACE logo for third party Accredited, secure Calving Ease bulls. Though we have had tools in the past to assist in choosing heifer bulls, we've never had one nearly this effective. The reduced risk that comes with this genomic certification will simply make your decisions easier and your heifer calving season more successful. Purchase special purpose ACE bulls with confidence. They will deliver consistent and predictable calving ease.



**ACCREDITED TERMINAL MATE** – Just like an ATM machine makes it simpler to access your cash, the ATM Logo highlights bulls accredited to generate extra cash income as soon as your next calf crop! These bulls are meant specifically to use only on mature cows and for the purpose of adding performance, pay weight and end product value to market.



## **CUTTING EDGE GENOMIC TECHNOLOGY**

### **RightChoice and RightMate Powered by Top Genomics - BETTER, STRONGER, FASTER**

Genetic providers have used strong genetic prediction tools like EPDs for making, then offering customers consistent genetic progress for a long time. Improved EPDs, bolstered by the inclusion of genomic evaluation have made the potential for more profitable cattle and better beef even greater in the past few years. Now there are RightMate and RightChoice. These improved technologies combine advanced knowledge of high impact genomics with the database proven power of EPDs. The results, are proving to be greatly accelerated genetic improvement capability with the added benefit of profit enhancing uniformity. Maybe the best news for customers is that despite the sophistication of the technology, these tools are simple to use. With both great power and needed simplicity RightMate and RightChoice are poised to change the way we both improve and market genetics.

For breeders and those wishing to get the most from every mating, RightMate is the most impactful and powerful option. Take the guesswork out of progress by using genomically prescribed matings and just as importantly avoid those with a low probability of success. The technology is ready and the validation is strong. Simply define the direction of your breeding objectives, even female by female and RightMate will help you get there faster than any tool used in the past. We've all known for a long time that certain cows just need to be mated to certain bulls. RightMate helps take the guesswork and the trial and error out. Finding the right mating, the first time makes all of the difference.

Better matings result in more improvement and more potential profit for commercial customers too. That should be the goal of every seedstock provider. Commercial customers however, need to be able to source genetics that fit their production systems and goals quickly and easily. That is where RightChoice comes in. With 20 or more EPD categories, overwhelming amounts of raw data and multiple index offerings to evaluate in a short time, the potential to use selection information to its best result has been possible, but difficult for commercial producers. RightChoice is designed as a simple to use sorting tool for selection of new sires or females all based on commercial genetic needs and production goals. The sophisticated technology is on the inside of RightChoice with easy to use Logos for sorting as the published and effective result. All you need to do is evaluate and pick the bulls you like from the group with the RightMate genetic logo that fits your needs.

RightChoice technology will not only push value and profit traits forward. Because of the way it sorts sires, it can reduce variation and inconsistency in your calf crop as well. For example, with ACE logo bulls, not only can you expect reduced dystocia, but the birth weights responsible for most of the challenges will be less variable. That means more calves born close to the average for weight and far fewer extreme calves that either create issues for your heifers or are unreasonably small. With smart RightMate selections, uniformity of calf crop continues to marketing and even replacement females, creating more profit all the way through. We can't always control the genes present in the cow herd, but we can make sure your seedstock purchase will help you get the most progress moving forward.

**RightMate and RightChoice...Better, Stronger, Faster.**



## Cattle Guarantee and Other Announcements

- (1) All bulls sold will come with a first breeding season guarantee which will last 75 days after the time of turnout. If there is a health problem with a bull please immediately contact Brett Nelson or Ken Trent and we will work through the matter with you. We guarantee breeding soundness only and request that you get a veterinary opinion and diagnosis. There are several options we can visit about if a problem arises. It is 100% our goal to make sure that you, our customers, are getting what you pay for.
- (2) The bulls will be vaccinated and fertility checked before delivery. We will contact you if there are any problems with a bull before delivery.
- (3) All bulls are selling with full possession and 50% semen interest.
- (4) Any announcements made at the sale will take precedence over any information printed in the catalog.
- (5) We strongly encourage you to purchase mortality insurance on any bull you purchase as soon as possible.
- (6) There will be a delivery fee (50% of delivery cost) on any bulls delivered more than 250 miles from the ranch. We are working diligently to come up with affordable options for bull delivery that extend outside the 250 mile free delivery range and will have that information available on sale day.



***DVAuction***  
***Broadcasting Real-Time Auctions***

Never Miss An Auction Again!  
Watch & Bid online for FREE!

**Visit [www.DVAuction.com](http://www.DVAuction.com)  
and Register Today!**

For General Questions Please Contact Our Office:  
(402) 316-5460 or [support@dvauction.com](mailto:support@dvauction.com)



## ◀ Simmental Bulls ▶



**LOT  
1**

**DTR/KJ 528N**

**Homozygous Black**

**1/2 SM 1/2 AN**

**Homozygous Polled**

**REG: 4541515**

**TATTOO: 528N**

**DATE OF BIRTH: 1/20/25**

**HOOK'S BEACON 56B**

**BASIN JAMESON 1076**

**SIRE: KBHR HONOR H060**

**DAM: L/R EVERGREEN 3105**

**WS MISS SUGAR C4**

**L/R EVERGREEN 8019**

	CE	BW	WW	YW	ADG	MCE	MILK	MWW	STAY	Act BW
<b>EPD</b>	11.3	1	104.1	169.9	0.41	6.5	26.7	79.1	15.9	ET
<b>Rank</b>	55	70	2	1	2	60	30	3	40	Adj WW
	DOC	CW	YG	MARB	BF	REA	SF	API	TI	773
<b>EPD</b>	13.3	59.8	-0.03	0.87	-0.018	0.62	-0.19	171.6	109	
<b>Rank</b>	40	10	90	5	75	65		10	1	



The Lot 1 bull comes from an opportunity we were given to flush one of the top young donor females at Lonesome River Ranch. The blending of two of the top sires from the Simmental and Angus breeds with KBHR HONOR and BASIN JAMESON worked very well. This first generation 1/2 blood ranks in the Top 2% WW, Top 1% YW and Top 4% in Marbling. He has been one of my favorites all year. We will be retaining the right to collect this bull for future in-herd use.



**KBHR HONOR H060**

**ASA# 3789447**

**SIRE OF LOTS:**

**1, 9, 15**



## ◀ Simmental Bulls ▶



**LOT  
2**

**DTR 525N**

1/2 SM 1/2 AN

Homozygous Black

Homozygous Polled

REG: 4541512

TATTOO: 525N

DATE OF BIRTH: 1/19/25

TJ BLACKLIST 233F

TJ FROSTY 318E

SIRE: TJ BLACKSHIRT 840J

DAM: DTR MS 345K

TJ 557F

DTR MS 085D

	CE	BW	WW	YW	ADG	MCE	MILK	MWW	STAY	Act BW
EPD	7.3	0.7	96.1	143.6	0.3	4.2	26.2	74.2	18.2	77
Rank	90	65	10	15	35	90	30	10	20	Adj WW
	DOC	CW	YG	MARB	BF	REA	SF	API	TI	775
EPD	12.7	58.2	-0.12	0.46	0.007	1.06	-0.3	143.5	93	
Rank	50	10	70	40	90	10		40	20	



The Lot 2 bull will be the leadoff calf of a very nice set of TJ Blackshirt 840J sons. He reminds us a lot of his sire in terms of movement and an attractive package that he improves on with a beautiful baldy face. This will be our last set of Blackshirt sons, don't miss out!!!



**TJ BLACKSHIRT 840J**

ASA# 3909331

SIRE OF LOTS:

2, 4, 5, 7, 11, 20, 24, 26



## ◀ Simmental Bulls ▶



**LOT  
3**

**DTR/KJ 508N**

Homozygous Black

**PB SM**

Homozygous Polled

REG: 4541492

TATTOO: M508N

DATE OF BIRTH: 12/16/24

WS PROCLAMATION E202

KBHR HONOR H060

SIRE: KBHR BOLD RULER H152

DAM: DTR/KJ MS 412L

BAR CK MS X38 106Z

DTR MS SCARJO 136F

	CE	BW	WW	YW	ADG	MCE	MILK	MWW	STAY	Act BW
EPD	12	0.1	90.1	141.4	0.32	9.2	33.8	78.6	18.9	76
Rank	30	30	20	15	15	10	4	3	15	Adj WW
	DOC	CW	YG	MARB	BF	REA	SF	API	TI	690
EPD	10.4	38.2	-0.23	0.45	-0.048	0.71	-0.37	164.4	97.3	
Rank	70	35	95	15	90	85		10	10	



I cannot say enough good about this bull. If you are looking for a bull with excellent docility, great growth, length of spine, a balanced set of EPD's, phenotype and the blending of two of the top proven purebred Simmental bulls in the breed, he will get it done. His first calf heifer dam comes from one of my best cow families that stems from the good DTR Spitting Image bull we raised and clear back to the U307 cow that was a cornerstone of our program. Lots of cow power in his pedigree.



**KBHR BOLD RULER H152**

ASA# 3789539

SIRE OF LOTS:

3, 10, 12, 13, 14, 19



## ◀ Simmental Bulls ▶



**LOT  
4**

**DTR/KJ 520N**

Homozygous Black

3/8 SM 5/8 AN

Homozygous Polled

REG: 4541507

TATTOO: 520N

DATE OF BIRTH: 1/17/25

TJ BLACKLIST 233F

KM BROKEN BOW 002

SIRE: TJ BLACKSHIRT 840J

DAM: DTR MS B. BOW 123F

TJ 557F

DTR MS 079D

	CE	BW	WW	YW	ADG	MCE	MILK	MWW	STAY	Act BW
EPD	9.7	-0.7	85.2	121.7	0.23	6.6	30.7	73.4	16.8	87
Rank	70	40	30	50	80	60	10	10	30	Adj WW
	DOC	CW	YG	MARB	BF	REA	SF	API	TI	
EPD	11.9	45	-0.01	0.5	0.024	0.7		138.6	87.1	754
Rank	65	35	95	35	99	50		45	35	

**LOT  
5**

**DTR 517N**

Homozygous Black

1/2 SM 1/2 AN

Homozygous Polled

REG: 4541503

TATTOO: 517N

DATE OF BIRTH: 1/13/25

TJ BLACKLIST 233F

FF TITAN F844

SIRE: TJ BLACKSHIRT 840J

DAM: DTR MS 282J

TJ 557F

DTR MS. 098E

	CE	BW	WW	YW	ADG	MCE	MILK	MWW	STAY	Act BW
EPD	13.1	-2.3	81.8	125.1	0.27	6.2	26.5	67.3	15.5	81
Rank	35	20	35	45	55	65	30	30	45	Adj WW
	DOC	CW	YG	MARB	BF	REA	SF	API	TI	
EPD	9.9	40.8	-0.04	0.48	0.015	0.64		146	89.1	719
Rank	85	45	90	40	95	60		35	30	

**DVAuction**  
Broadcasting Real-Time Auctions

**WATCH AND BID LIVE**

New bidders should register and apply  
to bid at least 24 hours prior to the sale.

For questions and tech support,  
call 402-316-5460.



## ◀ Simmental Bulls ▶



**LOT  
6**

**DTR/KJ 518N**

Homozygous Black

3/4 SM 1/4 AN

Homozygous Polled

REG: 4541504

TATTOO: 518N

DATE OF BIRTH: 1/15/25

KBHR BOLD RULER H152

DTR RANCHER'S CHOICE 198H

SIRE: TJ POWER SHIFT 567L  
TJ 60H

DAM: DTR/KJ MS 329K  
DTR KJ 234H

	CE	BW	WW	YW	ADG	MCE	MILK	MWW	STAY	Act BW
EPD	19.6	-3.6	89.8	140	0.31	9.1	31.5	76.3	22.1	65
Rank	4	10	15	20	30	20	5	5	2	Adj WW
	DOC	CW	YG	MARB	BF	REA	SF	API	TI	706
EPD	13.1	41.9	-0.24	0.36	-0.06	0.69		168.3	94.9	
Rank	45	40	35	55	25	50		10	15	



TJ Power Shift 567L was our pick of the highly sought after Bold Ruler X TJ 60H flush brothers in the 2024 Triangle J sale. The Power Shift progeny are very good and this son may just be the highlight of our sale. He comes to you with top tier calving ease and birth weight ratings as well as one of the top weaning weight EPD's in our offering. His second calf heifer dam will be entering the donor pen this spring. We will be retaining the right to collect this bull for future in-herd use.



**KBHR BOLD RULER H152**

ASA# 3789539

PATERNAL GRANDSIRE OF LOT 6



# ◀ Simmental Bulls ▶

**LOT 7 DTR 523N** 1/2 SM 1/2 AN  
Homozygous Black Homozygous Polled  
REG: 4541510 TATTOO: 523N DATE OF BIRTH: 1/19/25

TJ BLACKLIST 233F FF TITAN F844  
SIRE: TJ BLACKSHIRT 840J DAM: DTR MS MAGGIE 342K  
TJ 557F DTR MS B. BOW 125F

	CE	BW	WW	YW	ADG	MCE	MILK	MWW	STAY	Act BW
EPD	13.2	-2.2	77.9	122.6	0.28	7.6	28.3	67.2	21.5	66
Rank	35	20	50	50	50	40	20	30	3	Adj WW
	DOC	CW	YG	MARB	BF	REA	SF	API	TI	
EPD	9.6	29.4	-0.09	0.54	0.001	0.56		160.9	88.9	697
Rank	85	75	80	30	90	75		15	30	



**LOT 8 DTR 529N** PB SM  
Homozygous Black Homozygous Polled  
REG: 4541516 TATTOO: 529N DATE OF BIRTH: 1/20/25

KBHR BOLD RULER H152 BFB1 ABSOLUTE  
SIRE: TJ POWER SHIFT 567L DAM: DTR MS MAGGIE 344K  
TJ 60H DTR MS. 101E

	CE	BW	WW	YW	ADG	MCE	MILK	MWW	STAY	Act BW
EPD	11.2	1.1	95.7	150.4	0.34	5.7	25.3	73.1	16.8	87
Rank	35	50	10	10	10	50	35	15	35	Adj WW
	DOC	CW	YG	MARB	BF	REA	SF	API	TI	
EPD	15	54	-0.22	0.18	-0.061	0.8	-0.34	144.7	91.8	748
Rank	15	10	95	50	60	70		35	20	



**LOT 9 DTR 537N** PB SM  
Homozygous Black Homozygous Polled  
REG: 4541524 TATTOO: 537N DATE OF BIRTH: 1/25/25

HOOK'S BEACON 56B CCR COWBOY CUT 5048Z  
SIRE: KBHR HONOR H060 DAM: DATR MS 053C  
WS MISS SUGAR C4 FF MS RELIANCE Y875

	CE	BW	WW	YW	ADG	MCE	MILK	MWW	STAY	Act BW
EPD	10.6	-0.4	92.6	143.8	0.32	9.1	28.3	74.5	15	ET
Rank	45	25	15	15	15	10	20	10	55	Adj WW
	DOC	CW	YG	MARB	BF	REA	SF	API	TI	
EPD	13.2	43.9	-0.24	0.44	-0.047	0.84	-0.33	155.8	98.4	678
Rank	35	20	90	15	90	60		20	10	



**LOT 10 DTR/KJ 521N** PB SM  
Homozygous Black Homozygous Polled  
REG: 4541508 TATTOO: 521N DATE OF BIRTH: 1/18/25

WS PROCLAMATION E202 DTR SPITTING IMAGE 067D  
SIRE: KBHR BOLD RULER H152 DAM: DTR MS SCARJO 136F  
BAR CK MS X38 106Z DATR MS. SCARLETT 030B

	CE	BW	WW	YW	ADG	MCE	MILK	MWW	STAY	Act BW
EPD	11.9	0.2	82.8	134.1	0.32	8.1	34.6	75.8	22.4	72
Rank	30	35	40	25	15	15	3	10	2	Adj WW
	DOC	CW	YG	MARB	BF	REA	SF	API	TI	
EPD	13.4	36.3	-0.19	0.3	-0.044	0.6	-0.37	160.2	89.1	707
Rank	30	40	99	30	90	95		15	25	



**LOT 11 DTR/KJ 530N** 1/2 SM 1/2 AN  
Homozygous Black Homozygous Polled  
REG: 4541517 TATTOO: 530N DATE OF BIRTH: 1/20/25

TJ BLACKLIST 233F DTR COWBOY'S CHOICE 150G  
SIRE: TJ BLACKSHIRT 840J DAM: DTR/KJ MS 354K  
TJ 557F TJ MS 704C

	CE	BW	WW	YW	ADG	MCE	MILK	MWW	STAY	Act BW
EPD	4.1	4.3	100.4	159.5	0.37	2.9	25.1	75.2	14.8	91
Rank	99	99	3	4	10	99	40	10	55	Adj WW
	DOC	CW	YG	MARB	BF	REA	SF	API	TI	
EPD	15.4	61.8	-0.05	0.33	0.003	0.85		121.6	87.5	747
Rank	20	10	85	60	90	25		70	35	





## ◀ Simmental Bulls ▶



**LOT  
12**

**DTR 507N**

Homozygous Black

PB SM

Homozygous Polled

REG: 4541491

TATTOO: M507N

DATE OF BIRTH: 12/11/24

WS PROCLAMATION E202

KBHR HONOR H060

SIRE: KBHR BOLD RULER H152

DAM: DTR MS MAGGIE 406L

BAR CK MS X38 106Z

DTR MS MAGGIE 217H

	CE	BW	WW	YW	ADG	MCE	MILK	MWW	STAY	Act BW
EPD	13.2	-0.4	91	144.4	0.33	10.5	33.7	79.1	17.5	69
Rank	20	25	15	10	10	2	4	3	30	Adj WW
	DOC	CW	YG	MARB	BF	REA	SF	API	TI	
EPD	15.3	42.1	-0.21	0.75	-0.047	0.71	-0.36	180.8	106	679
Rank	15	25	95	2	90	85		3	2	



**LOT  
13**

**DTR 532N**

Homozygous Black

PB SM

Homozygous Polled

REG: 4541519

TATTOO: 532N

DATE OF BIRTH: 1/23/25

WS PROCLAMATION E202

TJ COWBOY'S CHOICE 420B

SIRE: KBHR BOLD RULER H152

DAM: DTR MS MAGGIE 217H

BAR CK MS X38 106Z

DATR MS. MAGGIE 026B

	CE	BW	WW	YW	ADG	MCE	MILK	MWW	STAY	Act BW
EPD	10.5	0.5	89.8	143.7	0.34	8.4	34.5	79.3	22.3	87
Rank	45	40	20	15	10	15	3	3	2	Adj WW
	DOC	CW	YG	MARB	BF	REA	SF	API	TI	
EPD	18.2	59.9	-0.21	0.5	-0.043	0.96	-0.36	171.3	97.7	682
Rank	2	3	95	15	90	35		10	10	



These two Bold Ruler sons stem from our best cow family. The dam of Lot 12 is the maternal sister to DTR Unrivaled. The dam of Lot 13 is the high stayability  $\frac{3}{4}$  blood power cow that produced donor quality daughters in her first two matings; and our high selling bull last year with her first bull calf. To say the least the 217H cow's story is just getting started as she was strictly in embryo production in 2025. The daughters of these two bulls will likely be their legacy. This would be a great opportunity for someone to purchase two paternal brothers out of a mother daughter combination. We will be retaining the right to collect both of these bulls for future in-herd use.



**DTR UNRIVALED 446M**

ASA# 4422922

Last year's high seller and  
maternal sibling to Lot 13.



# ◀ Simmental Bulls ▶

**LOT 14** **DTR 543N**

PB SM  
Homozygous Polled

REG: 4541530 TATTOO: 543N DATE OF BIRTH: 2/10/25

WS PROCLAMATION E202 MR SR 71 RIGHT NOW E1538  
SIRE: KBHR BOLD RULER H152 DAM: DTR/KJ MS MUSTANG SALLY 417L  
BAR CK MS X38 106Z TJ LADY MAY 115H

	CE	BW	WW	YW	ADG	MCE	MILK	MWW	STAY	Act BW
EPD	13.5	-1.1	82.6	137	0.34	9.6	33.3	74.6	13.5	80
Rank	20	15	40	20	10	5	5	10	70	Adj WW
	DOC	CW	YG	MARB	BF	REA	SF	API	TI	
EPD	16.8	43.2	-0.2	0.59	-0.037	0.78	-0.38	163.5	98.2	663
Rank	5	20	95	10	95	75		15	10	

**LOT 15** **DTR 569N**

PB SM  
Homozygous Polled

REG: 4541558 TATTOO: 569N DATE OF BIRTH: 1/17/25

HOOK'S BEACON 56B CCR COWBOY CUT 5048Z  
SIRE: KBHR HONOR H060 DAM: DATR MS 053C  
WS MISS SUGAR C4 FF MS RELIANCE Y875

	CE	BW	WW	YW	ADG	MCE	MILK	MWW	STAY	Act BW
EPD	12.3	-0.6	85.8	131.9	0.29	8.1	28.3	71.1	17.5	ET
Rank	25	20	30	25	30	15	20	20	30	Adj WW
	DOC	CW	YG	MARB	BF	REA	SF	API	TI	
EPD	13.7	36.7	-0.23	0.53	-0.037	0.79	-0.33	165.3	96.9	679
Rank	30	40	95	10	95	70		10	10	

**LOT 16** **DTR 512N**

5/8 SM 3/8 AN  
Homozygous Polled

REG: 4541496 TATTOO: 512N DATE OF BIRTH: 1/2/25

CONNEALY COMRADE 1385 MR SR 71 RIGHT NOW E1538  
SIRE: TJ MULTIPLIER 470H DAM: DTR MS MAGGIE 421L  
TJ 124Y DTR MS CC MAGGIE 175G

	CE	BW	WW	YW	ADG	MCE	MILK	MWW	STAY	Act BW
EPD	10.3	1	97	142.3	0.28	5.2	28.3	77.3	16	85
Rank	65	70	5	15	50	80	20	4	40	Adj WW
	DOC	CW	YG	MARB	BF	REA	SF	API	TI	
EPD	14.3	51.6	-0.27	0.23	-0.065	0.89	-0.39	130.1	88.7	649
Rank	30	20	30	80	15	20		60	30	



**LOT 17** **DTR 533N**

PB SM  
Homozygous Polled

REG: 4541520 TATTOO: 533N DATE OF BIRTH: 1/23/25

KBHR BOLD RULER H152 DTR RANCHER'S CHOICE 198H  
SIRE: TJ POWER SHIFT 567L DAM: DTR MS MAGGIE 336K  
TJ 60H DTR MS MAGGIE 227H

	CE	BW	WW	YW	ADG	MCE	MILK	MWW	STAY	Act BW
EPD	13.9	0.5	92.1	151.8	0.37	9.2	25	71	19.3	84
Rank	15	40	15	10	3	10	35	20	15	Adj WW
	DOC	CW	YG	MARB	BF	REA	SF	API	TI	
EPD	13.2	44.7	-0.21	0.25	-0.065	0.61		157.9	92.8	695
Rank	35	20	95	40	60	95		15	20	



**LOT 18** **DTR 511N**

5/8 SM 3/8 AN  
Homozygous Polled

REG: 4541495 TATTOO: 511N DATE OF BIRTH: 1/1/25

CONNEALY COMRADE 1385 FF BEACON J1539  
SIRE: TJ MULTIPLIER 470H DAM: DTR MS 426L  
TJ 124Y DTR MS 225H

	CE	BW	WW	YW	ADG	MCE	MILK	MWW	STAY	Act BW
EPD	9.9	-0.2	85.4	128.4	0.27	4	28.6	71.7	16.8	78
Rank	70	50	25	35	55	90	15	15	30	Adj WW
	DOC	CW	YG	MARB	BF	REA	SF	API	TI	
EPD	11.1	45	-0.11	0.42	-0.033	0.54		139	87.2	631
Rank	75	35	75	50	50	80		45	35	



**LOT 19** **DTR 514N**

PB SM  
Homozygous Polled

REG: 4541500 TATTOO: 514N DATE OF BIRTH: 1/7/25

WS PROCLAMATION E202 CCR COWBOY CUT 5048Z  
SIRE: KBHR BOLD RULER H152 DAM: DATR MS 053C  
BAR CK MS X38 106Z FF MS RELIANCE Y875

	CE	BW	WW	YW	ADG	MCE	MILK	MWW	STAY	Act BW
EPD	18.1	-4.3	68.1	109.3	0.26	10.5	34	68	19.4	74
Rank	3	1	90	70	45	2	4	30	15	Adj WW
	DOC	CW	YG	MARB	BF	REA	SF	API	TI	
EPD	18.9	29.9	-0.07	0.8	-0.007	0.42	-0.32	190.5	97.9	627
Rank	1	60	99	2	99	99		1	10	



**TJ MULTIPLIER 470H**

ASA# 3762985

SIRE OF LOTS:

16, 18, 23



# ◀ Simmental Bulls ▶

**LOT 20 DTR 538N** 1/2 SM 1/2 AN  
Homozygous Black Homozygous Polled  
REG: 4541525 TATTOO: 538N DATE OF BIRTH: 1/25/25

TJ BLACKLIST 233F DTR RANCHER'S CHOICE 198H  
SIRE: TJ BLACKSHIRT 840J DAM: DTR MS 343K  
TJ 557F DTR MS 179G

	CE	BW	WW	YW	ADG	MCE	MILK	MWW	STAY	Act BW
EPD	11.5	0.1	72.7	109.2	0.23	4.6	28.1	64.7	18.2	89
Rank	50	55	70	75	80	85	20	45	20	Adj WW
	DOC	CW	YG	MARB	BF	REA	SF	API	TI	676
EPD	10.4	31.2	-0.14	0.35	0.008	0.78		134.6	77.9	
Rank	80	70	65	60	90	35		50	65	

**LOT 21 DTR 540N** 1/2 SM 1/2 AN  
Homozygous Black Homozygous Polled  
REG: 4541527 TATTOO: 540N DATE OF BIRTH: 2/2/25

TEHAMA TAHOE B767 TJ Z54  
SIRE: TJ 931K DAM: DTR MS. 098E  
ASR MS JOSIE D6113 DATR MS MAGGIE 054C

	CE	BW	WW	YW	ADG	MCE	MILK	MWW	STAY	Act BW
EPD	19.5	-3.2	75.4	110	0.22	12.5	25.6	63.3	17.9	80
Rank	4	10	60	70	85	1	35	50	20	Adj WW
	DOC	CW	YG	MARB	BF	REA	SF	API	TI	693
EPD	13.5	40.3	-0.1	0.34	-0.011	0.63		150	83.5	
Rank	40	45	75	60	75	65		30	50	



**LOT 22 DTR 548N** 3/4 SM 1/4 AN  
Homozygous Black Homozygous Polled  
REG: 4541535 TATTOO: 548N DATE OF BIRTH: 2/22/25

KBHR BOLD RULER H152 DTR RANCHER'S CHOICE 198H  
SIRE: TJ POWER SHIFT 567L DAM: DTR MS 332K  
TJ 60H DTR OC MS 228H

	CE	BW	WW	YW	ADG	MCE	MILK	MWW	STAY	Act BW
EPD	21.5	-3.4	76.5	123.7	0.3	12	26	64.2	18.5	79
Rank	2	10	55	45	35	2	35	45	15	Adj WW
	DOC	CW	YG	MARB	BF	REA	SF	API	TI	670
EPD	12.9	35.6	-0.14	0.23	-0.015	0.68		151.1	82.8	
Rank	50	60	65	80	75	55		25	50	



**LOT 23 DTR 515N** 5/8 SM 3/8 AN  
Homozygous Black Homozygous Polled  
REG: 4541501 TATTOO: 515N DATE OF BIRTH: 1/11/25

CONNELLY COMRADE 1385 TJ BLACKSHIRT 840J  
SIRE: TJ MULTIPLIER 470H DAM: DTR MS MAGGIE 428L  
TJ 124Y DTR MS MAGGIE 077D

	CE	BW	WW	YW	ADG	MCE	MILK	MWW	STAY	Act BW
EPD	18.4	-3.5	74.2	101.3	0.17	7.6	31.6	69.1	19.5	65
Rank	10	10	65	85	99	40	5	25	10	Adj WW
	DOC	CW	YG	MARB	BF	REA	SF	API	TI	652
EPD	16.2	27.9	-0.1	0.49	0.004	0.59	-0.39	158.3	86.7	
Rank	15	80	75	40	90	70		20	40	



**LOT 24 DTR/KJ 522N** 1/2 SM 1/2 AN  
Homozygous Black Homozygous Polled  
REG: 4541509 TATTOO: 522N DATE OF BIRTH: 1/18/25

TJ BLACKLIST 233F TEHAMA PATRIARCH F028  
SIRE: TJ BLACKSHIRT 840J DAM: DTR/KJ MS 340K  
TJ 557F TJ MISS 137E

	CE	BW	WW	YW	ADG	MCE	MILK	MWW	STAY	Act BW
EPD	7	2.1	83.7	126.4	0.27	4.8	29.3	71.2	18.5	85
Rank	90	90	30	40	55	85	15	20	15	Adj WW
	DOC	CW	YG	MARB	BF	REA	SF	API	TI	668
EPD	12.8	45.3	-0.2	0.45	-0.013	1		136.2	84.3	
Rank	50	30	50	45	75	10		50	45	



**LOT 25 DTR/PT 527N** 5/8 SM 3/8 AR  
Heterozygous Black Homozygous Polled  
REG: 4541514 TATTOO: 527N DATE OF BIRTH: 1/20/25

KBHR HONOR H060 SILVEIRAS MISSION NEXUS 1378  
SIRE: DTR WALKER COLT 367L DAM: DTR MS SAMANTHA 103E  
DATR MS MAGGIE 054C FF MS SAM B825

	CE	BW	WW	YW	ADG	MCE	MILK	MWW	STAY	Act BW
EPD	8.9	1.8	91.8	138.2	0.29	6.9	24.6	70.4	12.7	88
Rank	75	85	15	20	40	55	45	20	75	Adj WW
	DOC	CW	YG	MARB	BF	REA	SF	API	TI	735
EPD	12.3	52.6	-0.25	0.08	-0.034	1.06		110.6	80.4	
Rank	55	15	35	95	50	10		85	60	



**LOT 26 DTR 526N** 1/2 SM 1/2 AN  
Heterozygous Black Heterozygous Polled  
REG: 4541513 TATTOO: 526N DATE OF BIRTH: 1/20/25

TJ BLACKLIST 233F FF ABSOLUTE D752  
SIRE: TJ BLACKSHIRT 840J DAM: DTR MS 237H  
TJ 557F DTR MS 085D

	CE	BW	WW	YW	ADG	MCE	MILK	MWW	STAY	Act BW
EPD	5.3	2.2	100.3	148.7	0.3	4	24.2	74.4	18.2	93
Rank	95	90	3	10	35	90	50	10	20	Adj WW
	DOC	CW	YG	MARB	BF	REA	SF	API	TI	741
EPD	11.6	51.4	-0.1	0.57	0.018	1.01		145.2	95.6	
Rank	65	20	75	30	95	10		35	15	





# 2025 PUREBRED SIMMENTAL PERCENTILE TABLE

%	CE	BW	WW	YW	ADG	DMI	MCE	MILK	MWW	STAY	DOC	CW	YG	MARB	BF	REA	SGN	API	TI
1	18.90	-4.00	105.40	165.10	0.39	-0.18	11.50	36.40	81.40	22.80	18.80	62.50	-0.57	0.82	-0.13	1.36	0.12	189.63	107.30
2	17.90	-3.30	102.30	159.70	0.37	-0.09	10.80	34.80	79.20	21.90	17.90	58.90	-0.55	0.73	-0.12	1.30	0.11	183.34	104.31
3	17.30	-2.90	100.10	155.90	0.36	-0.04	10.40	33.80	77.90	21.30	17.30	56.20	-0.53	0.68	-0.12	1.26	0.11	179.76	102.31
4	16.80	-2.60	98.60	153.20	0.35	0.01	10.00	33.00	76.80	20.90	16.90	54.20	-0.52	0.64	-0.11	1.22	0.10	176.69	100.97
5	16.50	-2.30	97.30	150.90	0.34	0.05	9.80	32.30	76.00	20.60	16.60	52.70	-0.51	0.60	-0.11	1.20	0.10	174.27	99.88
10	15.30	-1.40	92.90	143.20	0.32	0.17	8.90	29.90	73.10	19.50	15.50	47.70	-0.47	0.50	-0.10	1.12	0.09	165.69	95.71
15	14.50	-0.90	89.90	137.70	0.31	0.26	8.30	28.30	71.00	18.80	14.80	44.40	-0.45	0.42	-0.09	1.07	0.08	159.52	92.96
20	13.90	-0.50	87.50	133.70	0.29	0.33	7.80	27.20	69.50	18.20	14.20	41.95	-0.43	0.37	-0.09	1.03	0.07	154.65	90.70
25	13.40	-0.10	85.60	130.20	0.28	0.40	7.40	26.30	68.10	17.70	13.70	39.80	-0.42	0.32	-0.08	0.99	0.07	150.40	88.64
30	13.00	0.20	83.90	127.10	0.27	0.45	7.00	25.50	66.80	17.20	13.20	37.90	-0.40	0.28	-0.08	0.97	0.06	146.61	86.85
35	12.60	0.50	82.40	124.30	0.26	0.51	6.70	24.70	65.70	16.70	12.80	36.10	-0.39	0.25	-0.08	0.94	0.06	142.91	85.14
40	12.20	0.80	81.00	121.60	0.26	0.56	6.30	24.10	64.50	16.30	12.40	34.60	-0.38	0.22	-0.08	0.92	0.05	139.50	83.54
45	11.80	1.10	79.70	119.20	0.25	0.62	6.00	23.40	63.40	15.80	12.00	33.10	-0.37	0.19	-0.07	0.89	0.05	136.15	82.10
50	11.40	1.30	78.50	116.80	0.24	0.67	5.70	22.80	62.30	15.30	11.60	31.70	-0.36	0.16	-0.07	0.87	0.04	133.08	80.69
55	11.10	1.60	77.30	114.60	0.23	0.72	5.50	22.20	61.20	14.80	11.20	30.40	-0.35	0.14	-0.07	0.85	0.04	129.90	79.37
60	10.70	1.80	76.20	112.40	0.23	0.77	5.20	21.60	60.10	14.30	10.80	29.10	-0.34	0.11	-0.06	0.83	0.04	126.75	77.99
65	10.30	2.00	75.00	110.20	0.22	0.83	4.90	20.90	59.00	13.80	10.40	27.80	-0.32	0.09	-0.06	0.81	0.03	123.79	76.65
70	9.90	2.30	73.70	107.90	0.21	0.89	4.60	20.30	57.90	13.20	9.90	26.50	-0.31	0.06	-0.06	0.78	0.03	120.70	75.33
75	9.40	2.60	72.40	105.40	0.20	0.95	4.20	19.60	56.80	12.60	9.40	25.10	-0.30	0.04	-0.05	0.76	0.02	117.66	73.96
80	8.90	2.90	70.80	102.70	0.19	1.01	3.90	18.80	55.60	12.00	8.80	23.60	-0.28	0.01	-0.05	0.73	0.02	114.51	72.63
85	8.20	3.30	69.10	99.70	0.18	1.09	3.40	18.00	54.40	11.40	8.10	22.00	-0.26	-0.02	-0.05	0.69	0.01	111.20	71.07
90	7.20	3.90	67.00	95.90	0.17	1.20	2.90	16.90	52.80	10.60	7.10	19.90	-0.24	-0.06	-0.04	0.65	0.00	107.39	69.25
95	5.70	4.80	63.80	90.40	0.16	1.36	2.10	15.30	50.70	9.60	5.60	16.70	-0.19	-0.11	-0.03	0.58	-0.01	102.05	66.48
AVG	11.40	1.30	78.50	116.80	0.24	0.67	5.70	22.80	62.30	15.30	11.60	31.70	-0.36	0.16	-0.07	0.87	0.04	133.08	80.69

# 2025 HYBRID PERCENTILE TABLE

%	CE	BW	WW	YW	ADG	DMI	MCE	MILK	MWW	STAY	DOC	CW	YG	MARB	BF	REA	SGN	API	TI
1	20.30	-5.60	104.20	168.40	0.42	-0.09	12.30	34.70	81.00	22.60	19.50	71.70	-0.45	1.09	-0.09	1.24	0.15	191.61	108.07
2	19.40	-4.90	100.90	162.50	0.40	0.01	11.70	33.30	78.80	21.70	18.50	66.90	-0.43	0.99	-0.09	1.17	0.14	184.43	104.74
3	18.80	-4.50	98.80	158.60	0.39	0.08	11.30	32.40	77.40	21.10	18.00	64.10	-0.41	0.92	-0.08	1.12	0.13	180.08	102.73
4	18.40	-4.10	97.10	155.80	0.38	0.14	11.00	31.70	76.40	20.70	17.50	62.00	-0.39	0.88	-0.08	1.09	0.12	176.74	101.30
5	18.00	-3.90	95.80	153.40	0.37	0.18	10.80	31.20	75.60	20.30	17.20	60.30	-0.38	0.84	-0.08	1.06	0.12	173.87	100.00
10	16.80	-2.90	91.50	145.70	0.35	0.32	9.90	29.40	72.70	19.10	16.10	54.90	-0.34	0.73	-0.07	0.97	0.10	165.43	95.80
15	16.00	-2.30	88.70	140.50	0.33	0.42	9.40	28.20	70.60	18.30	15.40	51.20	-0.31	0.66	-0.06	0.91	0.09	159.79	93.08
20	15.40	-1.90	86.30	136.40	0.32	0.50	8.90	27.30	69.10	17.70	14.80	48.40	-0.29	0.60	-0.06	0.86	0.09	155.37	90.99
25	14.80	-1.50	84.40	133.10	0.31	0.57	8.50	26.50	67.70	17.10	14.30	46.00	-0.27	0.56	-0.05	0.82	0.08	151.60	89.25
30	14.40	-1.10	82.60	129.90	0.30	0.63	8.10	25.90	66.50	16.60	13.90	43.90	-0.25	0.52	-0.05	0.79	0.07	148.27	87.71
35	13.90	-0.80	81.00	127.00	0.29	0.69	7.80	25.30	65.40	16.20	13.50	42.00	-0.23	0.48	-0.04	0.76	0.07	145.13	86.30
40	13.50	-0.50	79.60	124.30	0.28	0.74	7.50	24.70	64.40	15.70	13.10	40.20	-0.22	0.44	-0.04	0.73	0.06	142.15	84.85
45	13.10	-0.20	78.20	121.80	0.27	0.79	7.20	24.10	63.40	15.30	12.80	38.50	-0.20	0.41	-0.04	0.70	0.06	139.10	83.42
50	12.70	0.00	76.90	119.30	0.27	0.84	6.90	23.60	62.30	14.80	12.40	36.80	-0.18	0.38	-0.03	0.67	0.06	136.12	82.06
55	12.30	0.30	75.60	116.80	0.26	0.90	6.50	23.10	61.30	14.40	12.10	35.20	-0.17	0.35	-0.03	0.65	0.05	132.95	80.67
60	12.00	0.60	74.20	114.40	0.25	0.95	6.20	22.50	60.20	13.90	11.70	33.50	-0.15	0.32	-0.03	0.62	0.05	129.73	79.25
65	11.60	0.90	72.80	111.90	0.24	1.01	5.90	22.00	59.10	13.30	11.40	31.80	-0.13	0.29	-0.02	0.59	0.04	126.16	77.73
70	11.10	1.10	71.30	109.10	0.23	1.07	5.60	21.30	58.00	12.70	11.00	30.10	-0.11	0.26	-0.02	0.56	0.04	122.69	76.12
75	10.70	1.40	69.70	106.40	0.23	1.13	5.20	20.70	56.80	12.10	10.50	28.30	-0.09	0.23	-0.01	0.53	0.03	118.95	74.51
80	10.20	1.80	68.00	103.30	0.22	1.20	4.80	20.00	55.50	11.50	10.00	26.50	-0.07	0.19	-0.01	0.49	0.02	114.95	72.74
85	9.50	2.10	65.90	99.70	0.20	1.28	4.40	19.20	54.00	10.70	9.30	24.20	-0.05	0.15	0.00	0.45	0.02	110.39	70.73
90	8.80	2.60	63.20	95.20	0.19	1.39	3.80	18.10	52.10	9.70	8.30	21.50	-0.01	0.11	0.00	0.40	0.01	105.02	68.33
95	7.60	3.30	59.20	88.50	0.17	1.55	3.00	16.30	49.20	8.30	6.70	17.20	0.04	0.04	0.02	0.31	-0.01	97.62	64.93
AVG	12.70	0.00	76.90	119.30	0.27	0.84	6.90	23.60	62.30	14.80	12.40	36.80	-0.18	0.38	-0.03	0.67	0.06	136.12	82.06



# KA-CHING.

MORE POUNDS.  
MORE CALVES.  
MORE PROFIT.



Hereford.org | 816-842-3757

Hereford bulls increase net profit by \$51 per cow per year.

That's \$20,000 in additional revenue for a typical 400-cow outfit, thanks to increased fertility and herd size.

Herefords are also the efficiency experts, proven to add value to calves in the feedyard — \$30 per head in profitability.

**7%**

Higher pregnancy rates

**\$51**

More Per Cow, Per Year

**\$20**

Advantage in Feed Efficiency

**\$30**

Advantage in Feedlot Profitability

**COME HOME TO HEREFORD.**



## ◀ Hereford Sires ▶

### **JDK AH LINCOLN 106H ET**

AHA# P44148953

**SIRE OF LOTS:**

**27, 30, 32**



### **DVOR 619G 934 EXPEDITION 1154J**

AHA# P44250689

**SIRE OF LOTS:**

**28, 33, 35, 39, 40, 42**

### **NH BN 508 LEADER 818**

AHA# P44053086

**SIRE OF LOTS:**

**36, 37, 38, 43, 44**





# ◀ Hereford Bulls ▶



116M

**LOT 27** **NH 047 LINCOLN 116M**

REG: 44722126

TATTOO: 116M

DATE OF BIRTH: 9/12/2024

Polled

JDH VICTOR 719T 33Z ET

LH LEADER 767

SIRE: JDH AH LINCOLN 106H ET

DAM: NH BN 767 MISS STACY 047

AH MS 25L RUMBLER 19Z

NH BN STACEY'S TIME 815 ET

## EPDs

CE	BW	WW	YW	DMI	SC	SCF	MM	MG	MCE
3.5	2.3	68	109	.6	1.0	17.1	25	58	.2
MCW	UDDR	TEAT	CW	FAT	REA	MARB	\$BMI	\$BII	\$CHB
109	1.38	1.40	77	.007	.52	.09	367	450	120

Act BW

82

WW

706

This Lincoln son is powerful and has been a standout since birth. There are not many Lincoln sons available anywhere else in the country.

**LOT 28** **NH 2119 EXPEDITION 131M**

REG: 44722132

TATTOO: 131M

DATE OF BIRTH: 9/24/2024

Polled

SR EXPEDITION 619G ET

JDH AH LINCOLN 106H ET

SIRE: DVOR 619G 934 EXPEDITION 1154J

DAM: NH 984 MISS LINCOLN 2119

DVOR 273 5819 LADY SANDI 934G

NH BN SWEET CACTUS 984

## EPDs

CE	BW	WW	YW	DMI	SC	SCF	MM	MG	MCE
0.2	4.1	71	117	.5	1.5	17.7	27	62	.7
MCW	UDDR	TEAT	CW	FAT	REA	MARB	\$BMI	\$BII	\$CHB
107	1.33	1.33	89	.017	.69	.09	396	481	142

Act BW

85

WW

701

A very cool made, stout thick made expedition son out of a Lincoln daughter.



# ◀ Hereford Bulls ▶



139M

## LOT 29 NH NEON GATSBY 139M ET

Polled

REG: 44721523 TATTOO: 139M DATE OF BIRTH: 10/8/2024

B&C STOCK OPTION 6026D ET GH NEON 17N  
SIRE: K GATSBY 922 ET DAM: KN MISS NEON MOON 802  
SULL TCC HARLEY 4069B ET SWS MISS EXCEL 333

### EPDs

CE	BW	WW	YW	DMI	SC	SCF	MM	MG	MCE
1.7	4.2	50	90	-.1	.6	7.8	24	49	-1.6
MCW	UDDR	TEAT	CW	FAT	REA	MARB	\$BMI	\$BII	\$CHB
109	0.95	0.85	78	-.001	.55	.16	254	317	147

A big barreled, thick made Gatsby son out of a cow that don't miss.

Act BW
87
WW
667



113M

## LOT 30 NH 2136 LINCOLN 113M

Polled

REG: 44722506 TATTOO: 113M DATE OF BIRTH: 9/7/2024

JDH VICTOR 719T 33Z ET K GATSBY 922 ET  
SIRE: JDH AH LINCOLN 106H ET DAM: NH BN 406 MISS GATSBY 2136  
AH MS 25L RUMBLER 19Z NH BN LADY SENSATION 406

### EPDs

CE	BW	WW	YW	DMI	SC	SCF	MM	MG	MCE
1.5	3.7	68	119	.5	1.3	16.4	28	62	1.9
MCW	UDDR	TEAT	CW	FAT	REA	MARB	\$BMI	\$BII	\$CHB
97	1.35	1.30	91	-.001	.82	.11	382	464	147

A deep sided, thick, smooth made Lincoln son out of a first calf heifer that flat out got it done.

Act BW
86
WW
698

## LOT 31 NH 732 DOMINO 110M

Horned

REG: 44721566 TATTOO: 110M DATE OF BIRTH: 8/18/2024

R 0141 NORTH STAR 57B R 0141 NORTH STAR 57B  
SIRE: NH BN 57B DOMINO 726 DAM: NH BN 57B MISS DOMINO 732  
GL 1 DOMINET 061X NH BN PRETTY IN PINK 109

### EPDs

CE	BW	WW	YW	DMI	SC	SCF	MM	MG	MCE
1.9	3.4	44	80	.0	1.0	14.7	34	56	2.6
MCW	UDDR	TEAT	CW	FAT	REA	MARB	\$BMI	\$BII	\$CHB
90	1.20	1.25	69	.014	.42	.08	331	388	119

A smooth made long sided bull that goes back to the Cooper 0141 bull.

Act BW
81
WW
635

## LOT 32 NH 1005 LINCOLN 140M

Polled

REG: 44722120 TATTOO: 140M DATE OF BIRTH: 10/9/2024

JDH VICTOR 719T 33Z ET CH HIGH ROLLER 756 ET  
SIRE: JDH AH LINCOLN 106H ET DAM: NH CANDY CANE 1005 ET  
AH MS 25L RUMBLER 19Z NH TKCC FLO 607

### EPDs

CE	BW	WW	YW	DMI	SC	SCF	MM	MG	MCE
-2.9	4.1	72	113	.6	.9	19.6	32	68	-3.9
MCW	UDDR	TEAT	CW	FAT	REA	MARB	\$BMI	\$BII	\$CHB
119	1.25	1.30	88	.004	.68	-.01	415	496	124

A cool made, thick and powerful Lincoln son.

Act BW
92
WW
642



# ◀ Hereford Bulls ▶

**LOT 33 NH 510 EXPEDITION 128M** Polled  
REG: 44721568 TATTOO: 128M DATE OF BIRTH: 9/20/2024

SR EXPEDITION 619G ET BOYD MASTERPIECE 0220  
SIRE: DVOR 619G 934 EXPEDITION 1154J DAM: NH BR MONA LISA 510  
DVOR 273 5819 LADY SANDI 934G GRANDVIEW CMR LADY PLATO 9219

## EPDs

CE	BW	WW	YW	DMI	SC	SCF	MM	MG	MCE
-0.2	4.1	48	104	-.3	.9	9.9	31	55	-1.6
MCW	UDDR	TEAT	CW	FAT	REA	MARB	\$BMI	\$BII	\$CHB
101	1.00	0.95	76	-.011	.61	.06	282	337	136

A solid marked, smooth made, long sided Expedition son.

Act BW
62
WW
645



**LOT 35 NH 043 EXPEDITION 63M** Polled  
REG: 44721565 TATTOO: 63M DATE OF BIRTH: 4/9/2024

SR EXPEDITION 619G ET NH CACTUS JACK 509 ET  
SIRE: DVOR 619G 934 EXPEDITION 1154J DAM: NH BN SUES CACTUS 043  
DVOR 273 5819 LADY SANDI 934G NH BN MISS SUE 416

## EPDs

CE	BW	WW	YW	DMI	SC	SCF	MM	MG	MCE
-0.9	5.1	63	107	.2	1.5	12.7	27	58	.7
MCW	UDDR	TEAT	CW	FAT	REA	MARB	\$BMI	\$BII	\$CHB
99	1.30	1.30	86	.014	.63	.07	323	396	141

A dark cherry red goggle eyed bull that is very long sided yet stout & thick made.

Act BW
79
WW
702

**LOT 34 NH 109 GATSBY 126M** Polled  
REG: 44721567 TATTOO: 126M DATE OF BIRTH: 9/20/2024

B&C STOCK OPTION 6026D ET NF 738T TRUMP 24W  
SIRE: K GATSBY 922 ET DAM: NH BN PRETTY IN PINK 109  
SULL TCC HARLEY 4069B ET NH MISS FUSION 901

## EPDs

CE	BW	WW	YW	DMI	SC	SCF	MM	MG	MCE
3.3	3.9	49	87	.0	.7	9.2	29	53	1.6
MCW	UDDR	TEAT	CW	FAT	REA	MARB	\$BMI	\$BII	\$CHB
109	0.90	0.85	80	-.011	.65	.21	279	344	152

A very smooth made Gatsby son out of a 15 year old cow that has paid her dues.

Act BW
81
WW
626



**LOT 36 NH 883 STUDLY LEADER 13M** Polled  
REG: 44721557 TATTOO: 13M DATE OF BIRTH: 3/25/2024

R LEADER 6964 CHURCHILL STUD 3134A  
SIRE: NH BN 508 LEADER 818 DAM: NH BN 802 MISS STUD 883 ET  
NH BN MISS LIMELIGHT 508 KN MISS NEON MOON 802

## EPDs

CE	BW	WW	YW	DMI	SC	SCF	MM	MG	MCE
3.2	3.2	57	92	.3	1.0	16.8	27	55	5.2
MCW	UDDR	TEAT	CW	FAT	REA	MARB	\$BMI	\$BII	\$CHB
104	1.20	1.20	86	.039	.74	.24	389	469	150

A soggy made, long sided bull out of a Churchill daughter.

Act BW
92
WW
672



# ◀ Hereford Bulls ▶



62M

## LOT 37 NH 818 DOMINO 62M

Horned

REG: 44721564 TATTOO: 62M DATE OF BIRTH: 4/8/2024

R LEADER 6964  
SIRE: NH BN 508 LEADER 818 NH BN 57B DOMINO 726  
NH BN MISS LIMELIGHT 508 DAM: NH BN 702 DOMINO 990  
NH BN STACIA MOON 702 ET

### EPDs

CE	BW	WW	YW	DMI	SC	SCF	MM	MG	MCE
5.8	2.8	54	87	.4	1.3	14.9	30	57	5.7
MCW	UDDR	TEAT	CW	FAT	REA	MARB	\$BMI	\$BII	\$CHB
94	1.20	1.25	71	.044	.44	.16	330	403	117

A long sided, athletic bull that should be suitable for use on heifers.

Act BW
76
WW
641



70M

## LOT 38 NH 751 LEADER 70M

Horned

REG: 44722125 TATTOO: 70M DATE OF BIRTH: 4/13/2024

R LEADER 6964  
SIRE: NH BN 508 LEADER 818 HARVIE 40Y WINSTON 252C  
NH BN MISS LIMELIGHT 508 DAM: NH BN 252C MISS MOON 751  
KN MISS NEON MOON 802

### EPDs

CE	BW	WW	YW	DMI	SC	SCF	MM	MG	MCE
4.0	3.5	54	88	.3	1.2	14.1	24	51	4.6
MCW	UDDR	TEAT	CW	FAT	REA	MARB	\$BMI	\$BII	\$CHB
99	1.15	1.10	70	.039	.33	.11	315	385	113

Very long sided, rugged bull that is ready to cover some ground.

Act BW
96
WW
622

## LOT 39 NH 022 EXPEDITION 52M

Polled

REG: 44721561 TATTOO: 52M DATE OF BIRTH: 4/4/2024

SR EXPEDITION 619G ET  
SIRE: DVOR 619G 934 EXPEDITION 1154J H BIG RIB 4250 ET  
DVOR 273 5819 LADY SANDI 934G DAM: NH BN 510 LADY H 022  
NH BR MONA LISA 510

### EPDs

CE	BW	WW	YW	DMI	SC	SCF	MM	MG	MCE
2.0	3.4	64	103	.3	1.2	17.3	27	59	2.7
MCW	UDDR	TEAT	CW	FAT	REA	MARB	\$BMI	\$BII	\$CHB
92	1.35	1.35	78	.009	.59	.08	379	456	128

A dark red, big barreled, thick made Expedition son.

Act BW
79
WW
652

## LOT 40 NH 175 EXPEDITION 34M

Horned

REG: 44721559 TATTOO: 34M DATE OF BIRTH: 3/31/2024

SR EXPEDITION 619G ET  
SIRE: DVOR 619G 934 EXPEDITION 1154J NH BN 57B DOMINO 726  
DVOR 273 5819 LADY SANDI 934G DAM: NH BN RUTH 175  
MCM RCC 109 RUTH 792E ET

### EPDs

CE	BW	WW	YW	DMI	SC	SCF	MM	MG	MCE
2.0	3.3	63	105	.3	1.5	16.0	29	60	1.9
MCW	UDDR	TEAT	CW	FAT	REA	MARB	\$BMI	\$BII	\$CHB
97	1.20	1.25	82	.009	.58	.07	364	440	133

A goggle eyed horned bull that is thick & soggy.

Act BW
85
WW
643



# ◀ Hereford Bulls ▶

## LOT 41 NH 1646 SENSATION 58M

Horned

REG: 44721563 TATTOO: 58M DATE OF BIRTH: 4/7/2024

NH BN SENSATION 405  
SIRE: NH BN 405 SENSATION 717  
NH BN LUCKY CHARM 519  
A/S EXCEL 238  
DAM: JLB MS EXCEL 1646  
HPH MISS HALLMARK 928

### EPDs

CE	BW	WW	YW	DMI	SC	SCF	MM	MG	MCE
3.3	3.3	51	84	.2	.7	14.3	26	52	2.1
MCW	UDDR	TEAT	CW	FAT	REA	MARB	\$BMI	\$BII	\$CHB
84	1.15	1.15	70	.024	.52	.15	325	393	121

Another long sided, goggle eyed, thick made horned bull.

Act BW
76
WW
628

## LOT 43 NH 776 LEADER 28M

Polled

REG: 44721017 TATTOO: 28M DATE OF BIRTH: 3/29/2024

R LEADER 6964  
SIRE: NH BN 508 LEADER 818  
NH BN MISS LIMELIGHT 508  
RST TIMES A WASTIN 0124  
DAM: NH BN KELLYS TIME 776 ET  
THM 6109 KELLY 1181

### EPDs

CE	BW	WW	YW	DMI	SC	SCF	MM	MG	MCE
4.3	2.2	55	89	.3	1.1	13.4	23	51	5.9
MCW	UDDR	TEAT	CW	FAT	REA	MARB	\$BMI	\$BII	\$CHB
95	1.15	1.15	74	.009	.46	.11	312	381	121

A solid marked, goggle eyed stout bull. Should work on heifers.

Act BW
79
WW
615

## LOT 44 NH 838 LEADER 56M

Horned

REG: 44721562 TATTOO: 56M DATE OF BIRTH: 4/5/2024

R LEADER 6964  
SIRE: NH BN 508 LEADER 818  
NH BN MISS LIMELIGHT 508  
H BIG RIB 4250 ET  
DAM: NH BN 030 LADY H 838  
NH MISS MAGGIE MOO 030

### EPDs

CE	BW	WW	YW	DMI	SC	SCF	MM	MG	MCE
5.5	3.7	50	79	.0	1.0	14.8	23	49	6.1
MCW	UDDR	TEAT	CW	FAT	REA	MARB	\$BMI	\$BII	\$CHB
82	1.20	1.20	63	.014	.32	.15	324	393	112

A long sided, thick & smooth made bull that should work on heifers

Act BW
80
WW
620

## LOT 42 NH 077 EXPEDITION 46M

Polled

REG: 44722118 TATTOO: 46M DATE OF BIRTH: 4/2/2024

SR EXPEDITION 619G ET  
SIRE: DVOR 619G 934 EXPEDITION 1154J  
DVOR 273 5819 LADY SANDI 934G  
CHURCHILL THROTTLE 534C ET  
DAM: NH BN 421 MISS THROTTLE 077  
NH BN LADY DIABLO 421

### EPDs

CE	BW	WW	YW	DMI	SC	SCF	MM	MG	MCE
1.5	3.7	68	110	.5	1.3	16.3	28	62	2.0
MCW	UDDR	TEAT	CW	FAT	REA	MARB	\$BMI	\$BII	\$CHB
97	1.35	1.35	91	-.001	.82	.11	382	463	147

A very complete, big barreled, thick made bull that is easy on the eyes

Act BW
82
WW
676



## LOT 45 NH 815 STUD 42M

Horned

REG: 44721560 TATTOO: 42M DATE OF BIRTH: 4/2/2024

CHURCHILL STUD 3134A  
SIRE: NH BN 802 NEON STUD 882 ET  
KN MISS NEON MOON 802  
RST TIMES A WASTIN 0124  
DAM: NH BN STACEY'S TIME 815 ET  
SWS MISS EXCEL 333

### EPDs

CE	BW	WW	YW	DMI	SC	SCF	MM	MG	MCE
0.6	4.1	49	84	.0	.8	13.6	23	47	1.4
MCW	UDDR	TEAT	CW	FAT	REA	MARB	\$BMI	\$BII	\$CHB
99	1.20	1.10	67	-.016	.34	-.01	308	364	109

Maybe the longest sided bull in the sale that is sure to add pounds to your calves.

Act BW
96
WW
619



## ◀ *Hereford Heifers* ▶

**LOT  
46**

### **Group of 5 Replacement Heifers**

Heifers will be right off the top of the replacements with a gate cut.

They are the same great quality as their bull mates.

Contact Brett with questions on these heifers  
or how they will sell.

308-214-0334

# *Thank You*

*for your interest in our programs!*

**DALE & TRENT**  
**D7** *Simmentals* **RANCH**

**NELSON**  
**HEREFORDS**



# WHOA.

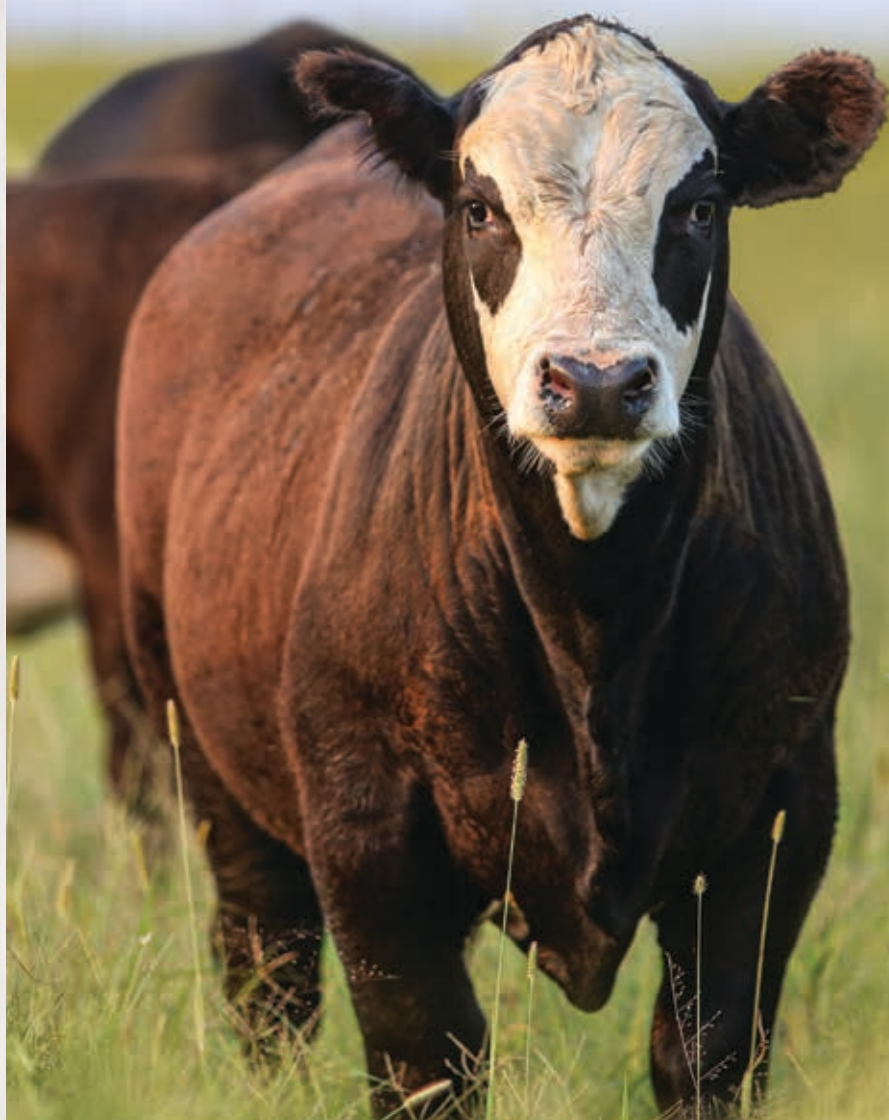
## MORE POUNDS. MORE CALVES. MORE PROFIT.

Herefords are known as the efficiency experts for a reason.

Herefords boost pregnancy rates by 7% and add \$30 per head in feedyard profitability in a crossbreeding system.

And Hereford genetics bring unrivaled hybrid vigor, longevity and disposition.

### COME HOME TO HEREFORD.



Hereford.org | 816-842-3757



# Understanding Hereford EPDs

The American Hereford Association (AHA) currently produces expected progeny differences (EPDs) for 15 traits and calculates four profit (\$) indexes. Research is ongoing to develop traits for fertility, feed intake and docility.

Today, DNA-marker tests can be used to enhance the accuracy of Hereford EPDs. AHA blends marker information with phenotypic information and pedigree to produce a GE-EPD. Look for the GE-EPD logo denoting an animal has been tested.

The current suite of Hereford EPDs and \$ indexes includes:

## Calving Ease – Direct (CE)

CE EPD is based on calving ease scores and birth weights and is measured on a percentage. CE EPD indicates the influence of the sire on calving ease in females calving at 2 years of age. For example, if sire A has a CE EPD of 6 and sire B has a CE EPD of -2, then you would expect on average if comparably mated, sire A's calves would be born with an 8% more likely chance of being unassisted when compared to sire B's calves.

## Birth Weight (BW)

BW EPD is an indicator trait for calving ease and is measured in pounds. For example, if sire A has a BW EPD of 3.6 and sire B has a BW EPD of 0.6, then you would expect on average if comparably mated, sire A's calves would come 3 lb. heavier at birth when compared to sire B's calves. Larger BW EPDs usually, but not always, indicate more calving difficulty. The figure in parentheses found after each EPD is an accuracy value or reliability of the EPD.

## Weaning Weight (WW)

WW EPD is an estimate of pre-weaning growth that is measured in pounds. For example, if sire A has a WW EPD of 60 and sire B has a WW EPD of 40, then you would expect on average if comparably mated, sire A's calves would weigh 20 lb. heavier at weaning when compared to sire B's calves.

## Yearling Weight (YW)

YW EPD is an estimate of post-weaning growth that is measured in pounds. For example, if sire A has a YW EPD of 100 and sire B has a YW EPD of 70, then you would expect on average if comparably mated, sire A's calves would weigh 30 lb. heavier at a year of age when compared to sire B's calves.

## Maternal Milk (MM)

The milking ability of a sire's daughters is expressed in pounds of calf weaned. It predicts the difference in average weaning weights of sires' daughters' progeny due to milking ability. Daughters of the sire with a +14 MM EPD should produce progeny with 205-day weights averaging 24 lb. more (as a result of greater milk production) than daughters of a bull with a MM EPD of -10 lb. (14 minus -10.0 = 24 lb.). This difference in weaning weight is due to total milk production during the entire lactation.

## Maternal Milk & Growth (M&G)

Maternal Milk & Growth reflects what the sire is expected to transmit to his daughters for a combination of growth genetics through weaning and genetics for milking ability. It is an estimate of daughters' progeny weaning weight. A bull with a 29 lb. M&G EPD should sire daughters with progeny weaning weights averaging 19 lb. heavier than progeny of a bull's daughters with a M&G EPD of 10 lb. (29 minus 10 = 19 lb.). It is equal to one-half the sire's weaning weight EPD, plus all of his MM EPD. No accuracy is associated with this since it is simply a mathematical combination of two other EPDs. It is sometimes referred to as "total maternal" or "combined maternal."

## Maternal Calving Ease (MCE)

MCE EPD predicts how easily a sire's daughters will calve at 2 years of age and is measured on a percentage. For example, if sire A has a MCE EPD of 7 and sire B has a CE EPD of -3, then you would expect on average if comparably mated, sire A's daughters would calve with a 10% more likely chance of being unassisted when compared to sire B's daughters.

## Mature Cow Weight (MCW)

The MCW EPD was designed to help breeders select sires that will either increase or decrease mature size of cows in the herd.

The trait was developed after years of cow weight data collection and the EPD relates directly to the maintenance requirements of a cow herd. For example, if sire A has a MCW EPD of 100 and sire B has an EPD of 85, then you would expect the females of sire A, if mated to similar cows, to be 15 lb. heavier at mature size.

## Udder suspension (UDDR)

UDDR EPDs are reported on a 9 (very tight) to 1 (very pendulous) scoring scale. Differences in sire EPDs predict the difference expected in the sires' daughters' udder characteristics when managed in the same environment.

For example, if sire A has a UDDR EPD of 0.4, and sire B has a UDDR EPD of -0.1, the difference in the values is 0.5, or one-half of a score. If daughters of sires A and B are raised and managed in the same environment, you would expect half a score better udder suspension in daughters of sire A, compared to sire B.

## Teat size (TEAT)

TEAT EPDs are reported on a 9 (very small) to 1 (very large, balloon shaped) scoring scale. Differences in sire EPDs predict the difference expected in the sires' daughters' udder characteristics when managed in the same environment.

For example, if sire A has a teat size EPD of 0.4, and sire B has a teat size EPD of -0.1, the difference in the values is 0.5, or one-half of a score. If daughters of sires A and B are raised and managed in the same environment, you would expect half a score smaller teat size in daughters of sire A, compared to sire B.

## Scrotal Circumference (SC)

Measured in centimeters and adjusted to 365 days of age, SC EPD is the best estimate of fertility. It is related to the bull's own semen quantity and quality, and is also associated with age at puberty of sons and daughters. Larger SC EPDs suggest younger age at puberty. Yearling sons of a sire with a .7 SC EPD should have yearling scrotal circumference measurements that average 0.7 centimeters (cm) larger than progeny by a bull with an EPD of 0.0 cm.

## Carcass Weight (CW)

Carcass weight is a beneficial trait when considering the impact that pounds have relative to end product value. At the same age constant endpoint, sires with higher values for carcass weight will add more pounds of hot carcass weight compared to sires with lower values for carcass weight. For example, if sire A has a CW EPD of 84 and sire B has a CW EPD 64, then you would expect the progeny of sire A, if harvested at the same age constant endpoint, to have a 20-lb. advantage in terms of hot carcass weight.

## Rib Fat (FAT)

The FAT EPD reflects differences in adjusted 365-day, 12th-rib fat thickness based on carcass measurements of harvested cattle. Sires with low, or negative FAT EPDs are expected to produce leaner progeny than sires with higher EPDs. Ultrasound measures are also incorporated into this trait and have been shown to be highly correlated with the performance of slaughter progeny. All data is expressed on a carcass scale.

## Ribeye Area (REA)

REA EPDs reflect differences in an adjusted 365-day ribeye area measurement based on carcass measurements of harvested cattle. Sires with relatively higher REA EPDs are expected to produce better-muscled and higher percentage yielding slaughter progeny than will sires with lower REA EPDs. Ultrasound measurements are also incorporated into this trait and have been shown to be highly correlated with the performance of slaughter progeny. All data is expressed on a carcass scale.

## Marbling (MARB)

MARB EPDs reflect differences in an adjusted 365-day marbling score (intramuscular fat, [IMF]) based on carcass measurements of harvested cattle. Breeding cattle with higher MARB EPDs should produce slaughter progeny with a higher degree of IMF and therefore higher quality grades. Ultrasound measurements are also incorporated into this trait and have been shown to be highly correlated with the performance of slaughter progeny. All data is expressed on a carcass scale.

## Baldie Maternal Index (BMI\$)

BMI\$ is a maternally focused index that has a production system based on 1,000-Hereford x Angus females with a progeny harvest endpoint directed toward Certified Hereford Beef (CHB\$).

This index is more critical of CE than the Brahman Influence Index (BI\$) and also has significant weight on fertility. There is positive weight on WW and a slightly negative weight on YW, which promotes early growth and then a slow down on growth to keep mature size manageable. The emphasis of IMF is greater than the emphasis of REA. This is true because of the price difference of the Choice-Select spread and the fact that there is very little incentive to produce cattle better than a Yield Grade 3. This index is geared to service any commercial program that has British-cross cows.

## Calving Ease Index (CEZ\$)

This is a general purpose index that focuses on identifying bulls that can be used on heifers and then ultimately the calves will be marketed through the CHB program. As you might expect, CE and MCE carry significant weight in this index along with fertility. There is very little weight put on growth traits and less emphasis on carcass. Remember, this is a general index that is specifically designed to be used in a heifer program.

## Brahman Influence Index (BI\$)

BI\$ is a maternally focused index that is based on a 1,000-head cow herd of Brahman x Hereford cows. The progeny for this index will be harvested in a commodity-based system since CHB does not accept Brahman-influenced cattle into the program. This index has less emphasis for CE than any of the other indexes. There is emphasis on both REA and IMF since the cattle will be harvested through a commodity market. The largest emphasis is in fertility, which is measured solely by SC at the present time. Obviously, the target for this index is the producers in the Southern regions of the U.S. where the bulls are typically sold to commercial cattlemen that have Brahman-influenced cow herds.

## Certified Hereford Beef Index (CHB\$)

This is a terminal sire index that is built on a production system where Hereford bulls sire calves for the CHB market. There is some pressure put on CE and then positive weight on both WW and YW. Remember that all offspring in this index are harvested, so they need to be born alive and then grow fast at all stages of life. Of course, we have much more emphasis on fat in this index, as we want the cattle to stay lean. There is also a significant weight on both REA and IMF with more emphasis again on IMF. This index would be used by producers who have a target of producing bulls for a terminal breeding program. It could be used heavily in the Midwest where bulls are used in rotational breeding programs to produce cattle in a retained ownership program or are simply sold to backgrounders. This is the only index that has no emphasis on fertility. Remember that nothing is retained in the herd.



# ◀ Nelson Family ▶





**DALE & TRENT**  
**D7** *Simmentals* **RANCH** **Y**  
22682 325TH RD  
PLEASANTON, NE 68866

**DALE & TRENT**  
**D7** *Simmentals* **RANCH** **Y**  
PLEASANTON, NE



**NELSON**  
**HEREFORDS**  
BURWELL, NE

