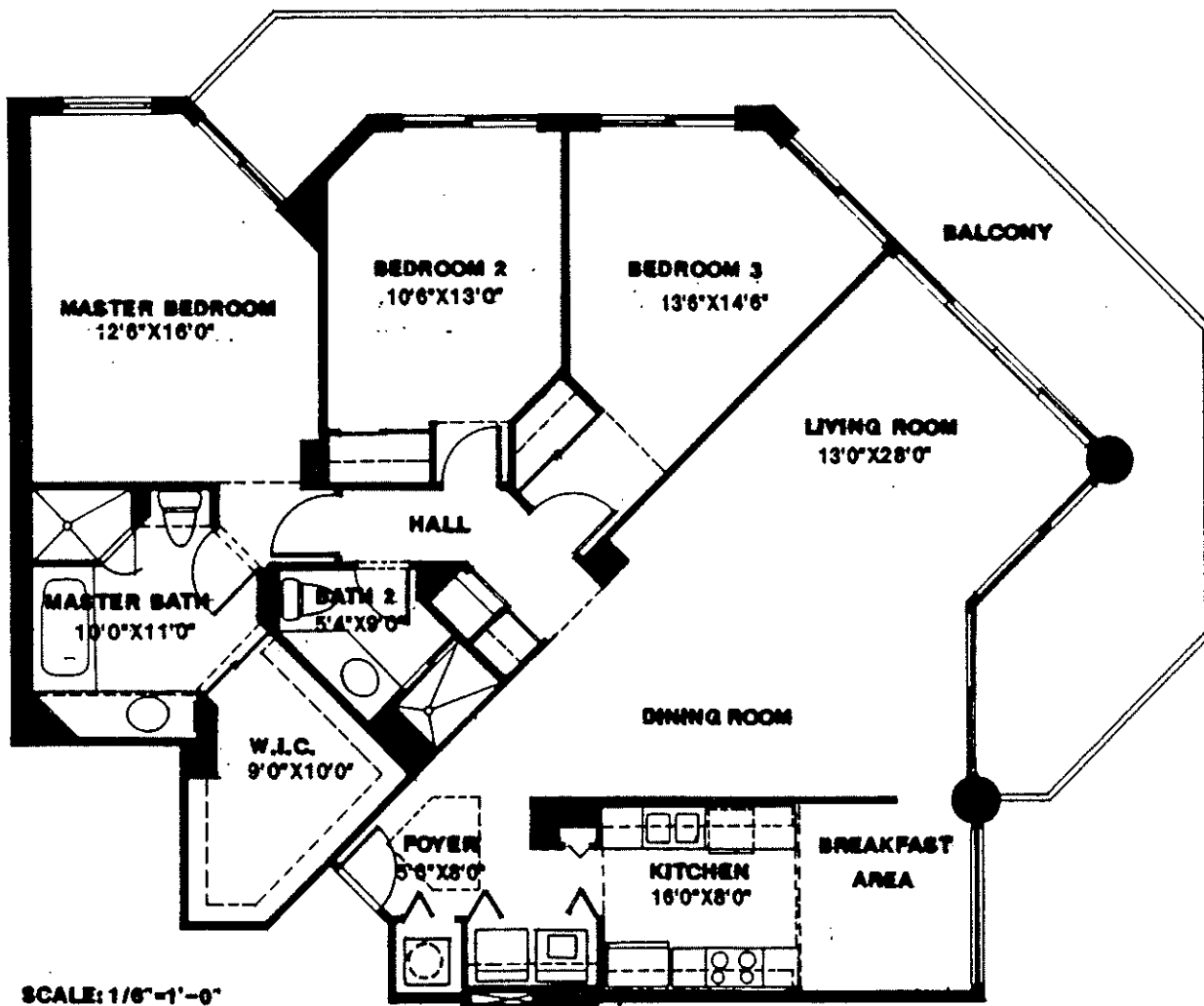


A Condominium

DATE: MARCH 30, 1988

PREPARED BY: ROBERT M. SWEDROE ARCHITECTS , PLANNERS
1674 MERIDIAN AVE. MIAMI BEACH, FLORIDA



NOTE:

THIS PLAN REPRESENTS THE D-10 PLAN
ON THE 4th THRU 6th FLRS.
FOR THE D-10 AT THE 7th FLR.
SEE D-10 mod. ON SHT. 27.

Units 410-710

UNIT TYPE D-10

(FLOORS 4th thru 6th ONLY)