



Patent Pending designs

**100% Steel**  
**100% Movable**  
**100% Quality**

Manufactured  
Exclusively Using



Building Products

INTRODUCING

# The Next Generation



## Steel Building Solutions

Set'nGo™ Cabins, Offices, Storage, Storefronts, Workspaces, Shelters and more...





Patent Pending designs

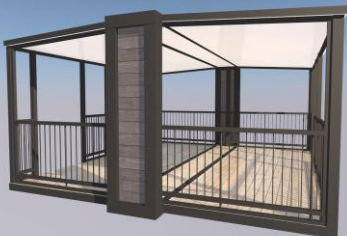
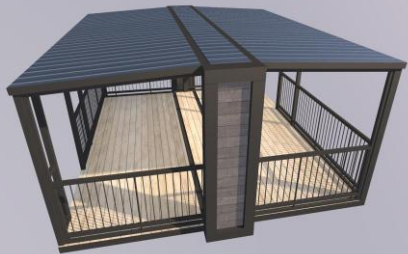
UTILITYMATE® Mfg. LLC.

2025-26

NEW PRODUCT

CONCEPT  
TO  
FINISH

20'x20' Footprint, 8' ft Exterior Height



Introducing the Set'nGo™

*Breezeway*



FOLD OUT  
DECK AND RAILING

PATENT PENDING

CARBON STEEL  
CORE FRAME

**Perched in a picturesque backyard**, the fully covered deck is a stunning retreat, enveloped by an elegant 360-degree railing that offers unobstructed views of the surrounding landscape. Illuminated by soft, ambient lighting woven into the steel canopy overhead, the deck creates a warm and inviting atmosphere for outdoor gatherings or a shaded retreat. The intricate railing, crafted with a blend of sleek metal not only ensures safety but also adds a touch of sophistication, framing the space like a panoramic showcase. Spacious enough for dining or lounging, The *Breezeway* serves as a versatile haven, blending comfort, style, and the beauty of the outdoors in perfect harmony.



POWDER COAT FINISH





Patent Pending designs

UTILITYMATE® Mfg. LLC.

2025-26  
NEW PRODUCT

CONCEPT  
TO  
FINISH

20'x20' Footprint, 8' ft Exterior Height



Introducing the Set'nGo™

*Cabaña*

FOLD OUT  
DECK AND RAILING  
PATENT PENDING

**Nestled in a serene backyard oasis**, the Cabaña seamlessly blends open-air leisure with a cozy shelter, featuring a half-deck and half-enclosed design. The spacious covered deck, perfect for lounging or outdoor dining, flows effortlessly into the finished sheltered area, where sleek folding glass doors create a versatile boundary. When fully opened, these doors merge the two spaces into a unified, airy retreat, allowing breezes to sweep through while maintaining an elegant, modern aesthetic.

The enclosed section, adorned with comfortable furnishings and soft lighting, offers a shaded haven for relaxation, making the Cabaña an ideal spot for both lively gatherings and tranquil escapes. Choose from different exterior finishes to complete the transition making it your own.



CARBON STEEL  
CORE FRAME







Patent Pending designs

UTILITYMATE® Mfg. LLC.

2025-26  
NEW PRODUCT

CONCEPT  
TO  
FINISH

20'x20' Footprint, 8' ft Exterior Height



FOLD OUT  
WALLS AND CEILING

PATENT PENDING

Introducing the Set'nGo™

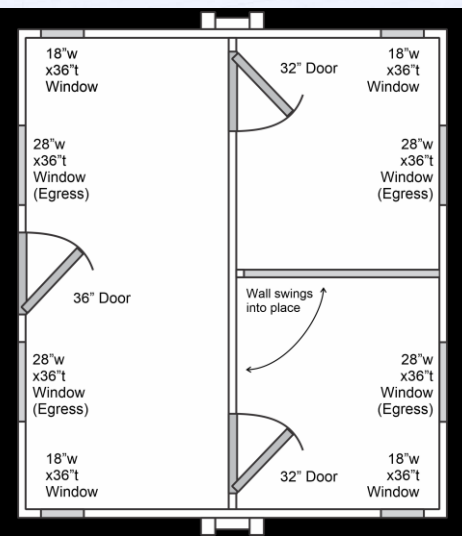
*Getaway*

Tucked away in a tranquil woodland clearing, this versatile *Getaway* is a charming, multi-purpose retreat designed to serve as a cozy cabin or welcoming guest house. The compact yet thoughtfully designed structure features a rustic exterior with optional sidings, blending seamlessly with its natural surroundings. Inside, an open-plan living area with a functional and inviting space (optional floor plans available).

Large windows flood the interior with natural light, while an optional covered porch offers a perfect spot for morning coffee or evening relaxation, making the *Getaway* an ideal escape for solitude, hosting guests, or even a creative studio retreat.



28" STEEL  
CORE FRAME







Patent Pending designs

UTILITYMATE® Mfg. LLC.

2025-26  
NEW PRODUCT

TIMELESS  
CLASSIC

20'x20' Footprint, 8' ft Exterior Height



Introducing  
the Set'nGo™

*Deck House*

### Everything Needs a Covered Deck This One Comes Standard!

The DeckHouse™ redefines what a compact 250-square-foot space can be. Inside, you'll find a flexible studio layout ideal for living, working, or creative use. Step outside to enjoy a 130-square-foot covered deck—perfect for relaxing, entertaining, or extending your workspace into the open air. Whether used as a guest suite, Airbnb rental, office, or small business location, the DeckHouse™ delivers a modern, efficient, and ready-to-go solution.





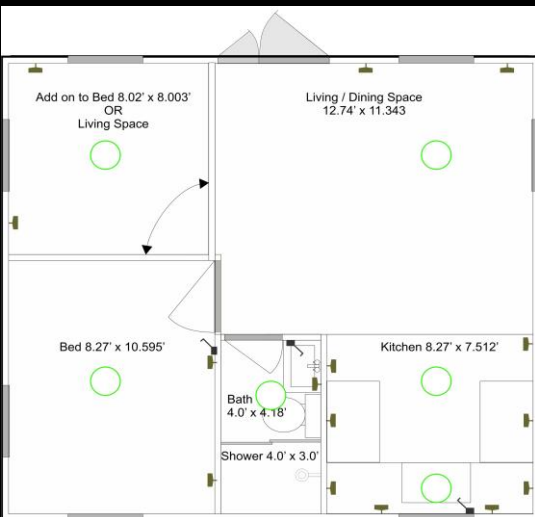


Patent Pending designs

UTILITYMATE® Mfg. LLC.

## 2025-26 MOST VERSATILE DESIGN

20'x20' Footprint, 8' ft Exterior Height



FLOOR PLANS AVAILABLE

Introducing the Set'nGo™

# ParkSide

## OPTIONAL ROOF DESIGNS AVAILABLE



Available in 400, 600 and 800 sq ft (1, 2 and 3 Room) Models

**Discover the ParkSide**, a standout Accessory Dwelling Unit (ADU) designed to transform your backyard into a stylish and functional haven. Perfect as a guest house or cozy cottage, this innovative structure boasts a distinctive design with clean, straight lines and a range of premium exterior options, from classic stucco to elegant tongue-and-groove cedar. Built to impress, the ParkSide is 100% utility-ready, ensuring seamless integration with plumbing, electricity, and more, right from the start. Its modern yet timeless appeal makes it an ideal addition for hosting guests or creating a private retreat, blending durability with customizable style to enhance your property's aesthetic value and charm.



OPTIONAL BATHROOM





Patent Pending designs

UTILITYMATE® Mfg. LLC.

2025-26

“BEST OF CLASS”

10'x20' Footprint, 8' ft Exterior Height



Introducing the Set'nGo™ *Studio Flat*



Optional Bathroom

**This is the Studio Flat**, a sleek and versatile 200 sq. ft. Accessory Dwelling Unit (ADU) designed to elevate your backyard into a private sanctuary or functional extension of your home. Perfect for those with limited space yet high standards for style and utility, this prefabricated retreat offers an ideal solution for overnight guests, a home office, or a personal hideaway. Crafted with precision in a state-of-the-art manufacturing facility, the Studio Flat combines modern design with practical living, featuring a insulated woodgrain exterior, large dual pane energy-efficient aluminum frame windows, and a thoughtfully laid-out interior with a bedroom, living area including a bathroom ready area in the middle.



CARBON  
STEEL FRAME



# UtilityMate® MANUFACTURING



[WWW.UTILITYMATE.COM](http://WWW.UTILITYMATE.COM)

At the heart of our products is a commitment to innovative design that prioritizes aesthetics, affordability, functionality and quality. Each unit is crafted with a focus on maximizing space efficiency without sacrificing comfort or style creating an inviting atmosphere.

*The Management Team*

