



UtilityMate[®]
MANUFACTURING
2026 **PRODUCTS**



Set'nGo[™]

Patent Pending designs

100% Steel
100% Movable
100% Quality

Manufactured
Exclusively Using



Building Products

INTRODUCING

The Next Generation



Steel Building Solutions

Set'nGo[™] Cabins, Offices, Storage, Storefronts, Workspaces, Shelters and more...



Patent Pending designs

UTILITYMATE® Mfg. LLC.

2025-26
NEW PRODUCT

400 Sq. Ft.
600 Sq. Ft.
800 Sq. Ft.
MODELS AVAILABLE

20'x20' Footprint, 8' ft Exterior Height



THE *Deck House*

FOLD OUT
DECK & RAILING
BIDIRECTIONAL SLIDER

Everything Needs a Covered Deck This One Comes Standard!

The DeckHouse™ redefines what a compact 250-square-foot space can be. Inside, you'll find a flexible studio layout ideal for living, working, or creative use. Step outside to enjoy a 130-square-foot covered deck—perfect for relaxing, entertaining, or extending your workspace into the open air. Whether used as a guest suite, Airbnb rental, office, or small business location, the DeckHouse™ delivers a modern, efficient, and ready-to-go solution.



POWDER COAT STEEL FRAME



THE Breezeway



Patent Pending designs





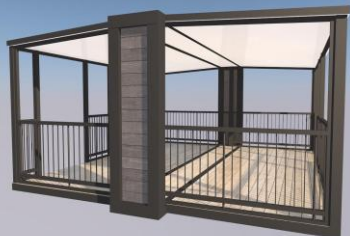
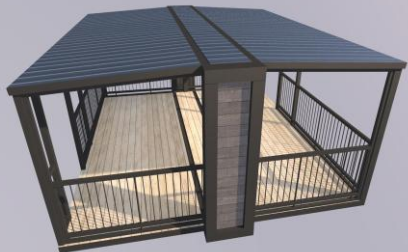
Patent Pending designs

UTILITYMATE® Mfg. LLC.

2025-26
NEW PRODUCT

FROM
CONCEPT
TO
FINISH

18'x16' Footprint, 8' ft Exterior Height



Introducing the Set'nGo™
Breezeway

FOLD OUT
DECK AND RAILING
DUAL ENTRY & EXIT

Perched in a picturesque backyard, the fully covered deck is a stunning retreat, enveloped by an elegant 360-degree railing that offers unobstructed views of the surrounding landscape. Illuminated by soft, ambient lighting woven into the steel canopy overhead, the deck creates a warm and inviting atmosphere for outdoor gatherings or a shaded retreat. The intricate railing, crafted with a blend of sleek metal not only ensures safety but also adds a touch of sophistication, framing the space like a panoramic showcase. Spacious enough for dining or lounging, The *Breezeway* serves as a versatile haven, blending comfort, style, and the beauty of the outdoors in perfect harmony.



POWDER COAT FINISH



Patent Pending
designs

THE *Cabaña*





Patent Pending designs

UTILITYMATE® Mfg. LLC.

2025-26

NEW PRODUCT

DECK & RAILING
FOLDING GLASS
ENTRY

18'x16' Footprint, 8' ft Exterior Height



THE
Cabaña

Nestled in a serene backyard oasis, the Cabaña seamlessly blends open-air leisure with a cozy shelter, featuring a half-deck and half-enclosed design. The spacious covered deck, perfect for lounging or outdoor dining, flows effortlessly into the finished sheltered area, where sleek folding glass doors create a versatile boundary. When fully opened, these doors merge the two spaces into a unified, airy retreat, allowing breezes to sweep through while maintaining an elegant, modern aesthetic.

The enclosed section, adorned with comfortable furnishings and soft lighting, offers a shaded haven for relaxation, making the Cabaña an ideal spot for both lively gatherings and tranquil escapes. Choose from different exterior finishes to complete the transition making it your own.



CARBON STEEL
CORE FRAME





Patent Pending
designs

THE
Getaway

DIY-ADU SERIES





Patent Pending designs

UTILITYMATE® Mfg. LLC.

2025-26
NEW PRODUCT

CONCEPT
TO
FINISH

18'x16' Footprint, 8' ft Exterior Height



Getaway

FOLD OUT
WALLS AND CEILING
PATENT PENDING

Tucked away in a tranquil woodland clearing, this versatile *Getaway* is a charming, multi-purpose retreat designed to serve as a cozy cabin or welcoming guest house. The compact yet thoughtfully designed structure features a rustic exterior with optional sidings, blending seamlessly with its natural surroundings. Inside, an open-plan living area with a functional and inviting space (optional floor plans available).

Large windows flood the interior with natural light, while an optional covered porch offers a perfect spot for morning coffee or evening relaxation, making the *Getaway* an ideal escape for solitude, hosting guests, or even a creative studio retreat.

Ask Us: Open floor plan & remote lock up packages available.



CARBON STEEL
CORE FRAME



Patent Pending
designs

THE
Park Side
DIY-ADU SERIES





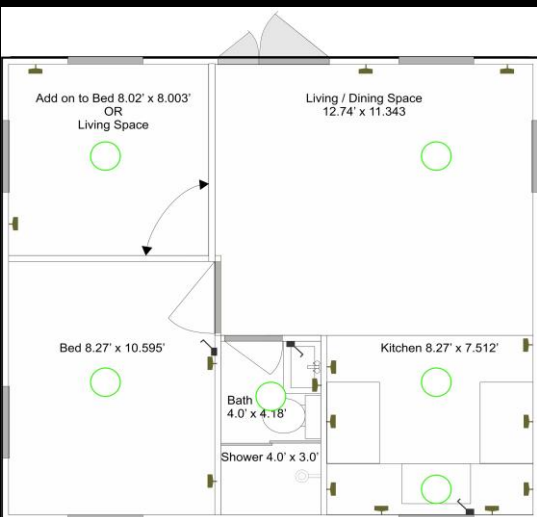
Patent Pending designs

UTILITYMATE® Mfg. LLC.

2025-26

**“MOST VERSATILE
DESIGN”**

20'x20' Footprint, 8' ft Exterior Height



FLOOR PLANS AVAILABLE

Available in 400, 600 and 800 sq ft (1, 2 and 3 Room) Models



**OPTIONAL ROOF
DESIGNS AVAILABLE**

Discover the ParkSide, a standout Accessory Dwelling Unit (ADU) designed to transform your backyard into a stylish and functional haven. Perfect as a guest house or cozy cottage, this innovative structure boasts a distinctive design with clean, straight lines and a range of premium exterior options, from classic stucco to elegant tongue-and-groove cedar. Built to impress, the ParkSide is 100% utility-ready, ensuring seamless integration with plumbing, electricity, and more, right from the start. Its modern yet timeless appeal makes it an ideal addition for hosting guests or creating a private retreat, blending durability with customizable style to enhance your property's aesthetic value and charm.



OPTIONAL BATHROOM



Patent Pending
designs



THE
Studio Flat



Patent Pending designs

UTILITYMATE® Mfg. LLC.

NEW for 2026

Studio Flat

10'x20' Footprint, 8' ft Exterior Height



Optional Bathroom



“Best of Class”

This is the Studio Flat, a sleek and versatile 200 sq. ft. Accessory Dwelling Unit (ADU). Perfect for those with limited space yet high standards for style and utility, this prefabricated retreat offers an ideal solution for overnight guests, a home office, or a personal hideaway. Crafted with precision in a state-of-the-art manufacturing facility, the Studio Flat combines modern design with practical living, featuring an insulated woodgrain exterior, large dual pane aluminum frame windows, and a thoughtfully laid-out interior with a bedroom, living area including a bathroom ready area in the middle.



**CARBON STEEL
CORE FRAME**

UtilityMate® MANUFACTURING



WWW.UTILITYMATE.COM

At the heart of our products is a commitment to innovative design that prioritizes aesthetics, affordability, functionality and quality. Each unit is crafted with a focus on maximizing space efficiency without sacrificing comfort or style creating an inviting atmosphere.

The Management Team

