

UtilityMate<sup>®</sup>  
MANUFACTURING



## REVOLUTIONIZING LIVING SPACES

We are revolutionizing living spaces with a transformative approach to housing that prioritizes innovation, sustainability, and community needs. At the forefront of this movement are solutions like our RV-ADUs (Accessory Dwelling Units) which integrate aesthetics with functionality, providing truly affordable and adaptable living options.

*The Management Team*



[WWW.UTILITYMATE.COM](http://WWW.UTILITYMATE.COM)

# RV//ADU 2025

Primary & Secondary Housing, Studios, Cabins, Commercial Office Space, Storefronts, Work Shops, Shelters and more...





### Our Mission...

Is to innovate and deliver high-quality, flexible housing solutions that meet the evolving needs of individuals and communities. We are committed to sustainability, affordability, and aesthetic integration, ensuring that our products not only provide comfort and safety but also enhance the environments in which they are placed. By always fostering partnerships and promoting responsible manufacturing practices, we aim to be a driving force in the transformation of the housing landscape, creating spaces that inspire and empower attainability.



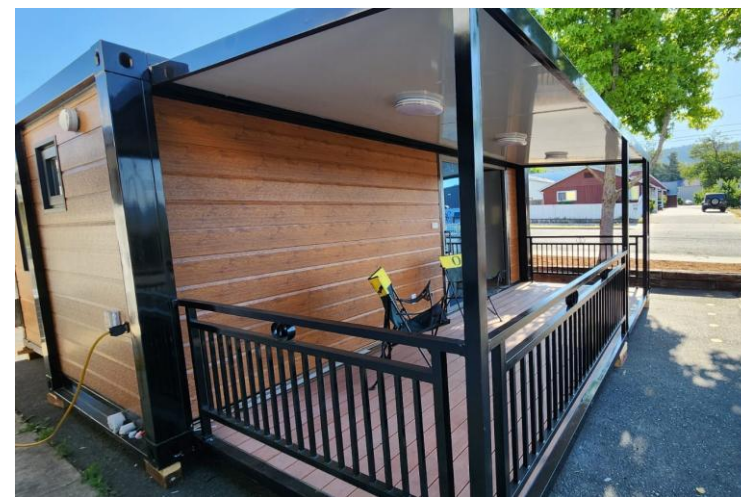
### Built By Design

At the heart of our structures is a commitment to innovative designs that prioritizes both functionality, mobility and exterior aesthetics.



### Home Affordability

By embracing forward thinking designs and manufacturing practices, we can create an ecosystem where affordable housing is attainable for all regardless of Income level or socioeconomic status. Everyone deserves a place to call home.



### Unfolding The Future

One of the most compelling aspects of Set'nGo<sup>™</sup> RV-ADUs is their drop ship and plug-and-play designs, which allows for rapid deployment into a variety of situations. These amazing little homes can be easily transported and setup quickly.



### Innovation By Design

In an era where attainable housing is increasingly critical, innovative solutions are emerging to address diverse community needs. We are committed to creating solutions that prioritizes quality, functionality and aesthetics.



### 100% Fire Resistant / NO Wood

Our commitment to a wood-free building process not only reduces environmental impact but also enhances the longevity and resilience of each LifeSpace Shelters<sup>™</sup>, ensuring they stand the test of time and remain fire resistant.





Picture caption:  
RV // “Unfolded DeckHouse”

## Revolutionizing Space with Set'nGo™ By UtilityMate® Mfg.

In a world where affordability, flexibility and efficiency are becoming critical, innovative solutions and innovative designs are being created by UtilityMate Mfg. under the Set'nGo™ brand.

Specializing in a variety of structures including ADUs, cabins, offices, store fronts, workspaces, and shelters, the company has redefined the way we think about space. Their unique mobile building solutions cater to both personal and commercial needs, making them an attractive option for consumers looking to optimize their living and working environments.



Picture caption: RV // “Folded DeckHouse”

## Curbside Appeal

A key aspect of our Set'nGo™ RV-ADUs is their true curbside appeal, which enables them to blend seamlessly like a chameleon into back yards including rural and suburban neighborhoods incorporating both local and regional aesthetics when they are thoughtfully built for the environment they will inhabit.

Manufactured with a carbon steel frame and insulated with proprietary graphite insulated steel dual core panel system. These RV-ADU models unlike wood-built structures provide exceptional strength and durability capable of withstanding harsh environmental conditions while providing an extremely energy efficient and comfortable living experience.

## The Future is Now!

Sustainability is paramount in modern living, and our RV and Modular ADU models are designed with this principle in mind. Built with energy-efficient materials and equipped with eco-friendly features, these units promote a smaller carbon footprint while providing very comfortable living spaces.

Sustainable technologies can be further integrated into our designs such as solar panels, water conservation systems, and energy-efficient appliances, illustrating how the RV-ADU models align with the growing demand for greener living options.

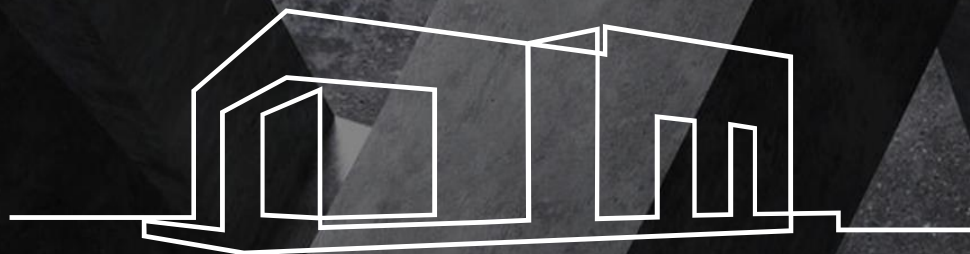
The commitment to a wood-free building process not only reduces environmental impact and long-term maintenance costs but also enhances the longevity and resilience of each home, ensuring they stand the test of time.

In conclusion, as we look to the future, the integration of RV-ADU or modular built models into the housing market offers a promising solution to the affordability crisis. Specifically, the Set'nGo™ RV-ADU models we manufacture not only provide immediate housing solutions but also contribute to long-term sustainability and community building.





UtilityMate<sup>®</sup>  
MANUFACTURING



## HOUSING THE UNHOUSED

This new paradigm in housing not only meets immediate shelter needs but also empowers individuals and communities, ensuring that everyone has access to a safe and comfortable place to call home. As an innovator in housing, we embrace forward-thinking designs. Everyday we aspire to pave the way for a future where housing is not just a necessity but a dignified and enriching experience for all.

*The Management Team*



[WWW.UTILITYMATE.COM](http://WWW.UTILITYMATE.COM)



LIFESPACE  
SHELTERS<sup>™</sup>

UtilityMate<sup>®</sup>  
MANUFACTURING



LIFESPACE  
SHELTERS<sup>™</sup>



## SPACES BUILT TO EMPOWER







## Our Mission...

At **LifeSpace Shelters™** our mission is to create innovative and sustainable housing solutions that empower individuals and communities. We are dedicated to addressing homelessness by providing safe, affordable, and adaptable living spaces that foster dignity and support. Through collaboration with local organizations and a commitment to responsible building practices, we aim to be a driving force in transforming the landscape of homelessness, ensuring that every person has access to a place they can call home.



## Innovative Design

In an era where transitional housing is increasingly critical, innovative solutions are emerging to address diverse community needs. We are committed to creating designs that prioritize both functionality and aesthetics.



## Rapid Deployment

One of the most compelling aspects of LifeSpace Shelters™ is their drop ship and plug-and-play designs, which allows for rapid deployment into a variety of situations. These buildings can be easily transported and setup quickly.



## Exterior Aesthetics

At the heart of every LifeSpace Shelter™ is a commitment to innovative looks and features that prioritize durability, functionality, mobility with an emphasis on exterior aesthetics that blend into the surrounding environment.



## 100% Fire Resistant / NO Wood

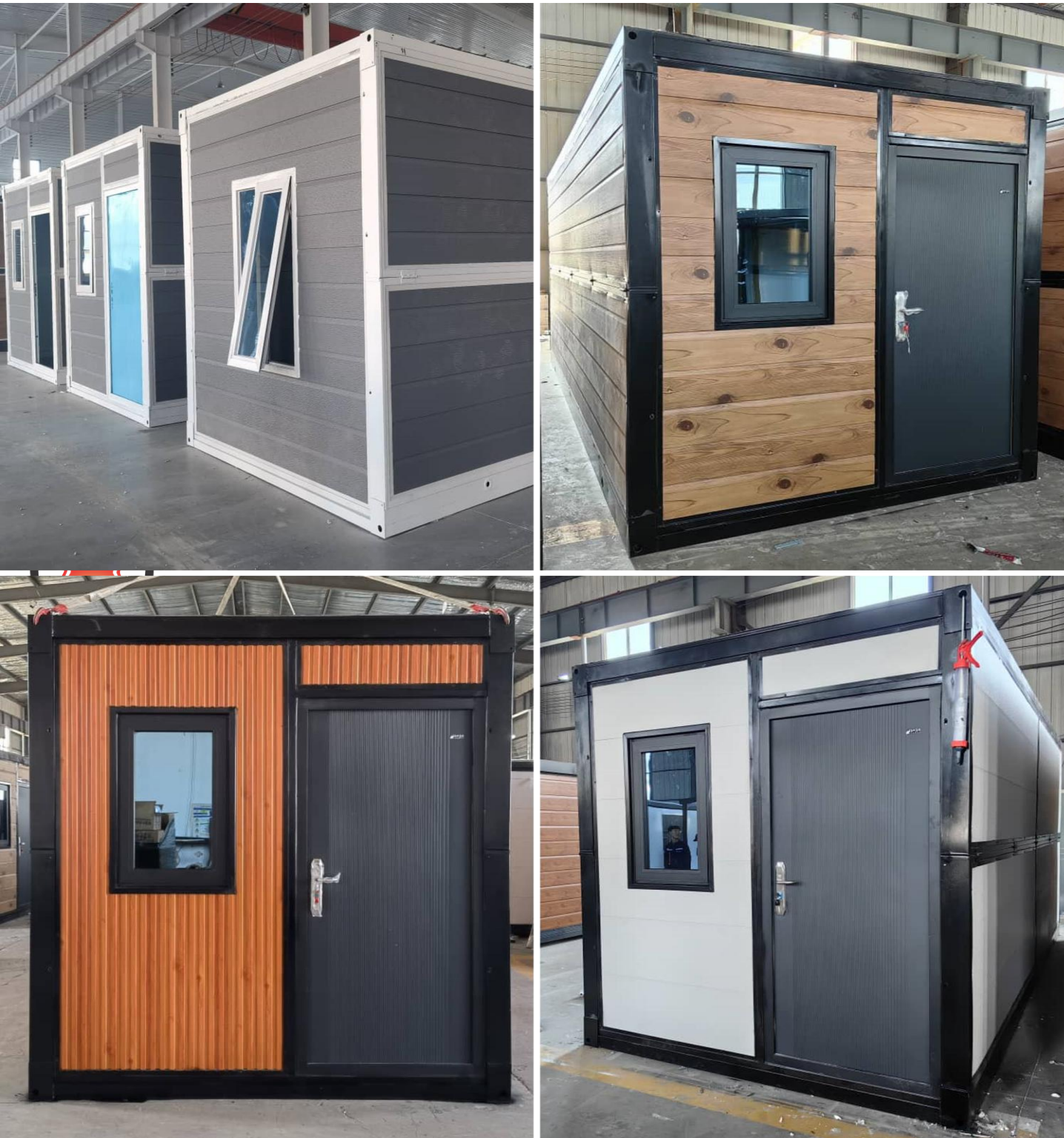
Our commitment to a wood-free building process not only reduces environmental impact but also enhances the longevity and resilience of each LifeSpace Shelters™, ensuring they stand the test of time and remain fire resistant.





# LIFESPACE SHELTERS™

Pictures caption // “LS1-2 shelters”



## Addressing Homelessness with LifeSpace Shelters™

The mission of LifeSpace Shelters™ goes beyond merely providing a roof; it's about restoring dignity and fostering a sense of belonging. By investing in strong, secure, and deployable structures for transitional and emergency housing, municipalities and nonprofit groups are taking a bold first step towards transforming the landscape of homelessness in our communities.

## A Solution for Municipalities & Nonprofit Organizations

As communities across the globe grapple with the growing challenge of homelessness, municipalities and nonprofit organizations are seeking innovative solutions to provide shelter and support for their most vulnerable neighbors. One such solution is LifeSpace Shelters™, a pioneer in creating truly strong, secure, and deployable living spaces tailored for transitional and emergency housing needs.

## Understanding the Need

The urgency of addressing homelessness has never been more critical. Local governments and nonprofit groups face immense pressure to provide immediate relief while developing long-term strategies for sustainable housing. LifeSpace Shelters™ recognize this challenge and offer a practical, durable solution designed to cater to the unique requirements of each community.

## High-Quality, Adaptable Shelters

Engineered by UtilityMate® Mfg. LLC, LifeSpace Shelters™ are built to last. With a 100% heavy-duty steel frame and insulated metal core panels, these shelters prioritize safety and security.

Each unit features reinforced structures and secure locking doors, ensuring that residents feel safe and protected in their new living spaces. This kind of robust design is essential for municipalities looking to provide not just shelter, but a secure environment for individuals experiencing homelessness.

The shelters come in various sizes, including the compact 8'x10' LifeSpace 1™ shelter, 8'x20' LifeSpace 2™ shelter, which offers two secured rooms, 16'x20' LifeSpace 4™ shelter, which offers four secured rooms, and the larger 16'x40' LifeSpace 8™, accommodating eight occupants. Not only are these modular lodgings capable of addressing immediate shelter needs, but they are also customizable, allowing municipalities to adapt the exterior appearance to suit local contexts and community expectations.

## Versatile Use Cases

One of the standout features of LifeSpace Shelters™ is their versatility. These structures are not limited to serving as transitional housing. They can also function as meeting rooms, medical facilities, counseling centers, and administrative offices, providing a comprehensive suite of services in one location. This multipurpose capability is particularly beneficial to nonprofit organizations striving to connect individuals with vital resources while minimizing the logistical challenges of operating out of multiple sites.

Additionally, LifeSpace MultiPlex™ Buildings expand the options even further, offering space ranges from as little as 160 sq. ft. to 800 sq. ft. This adaptability enables municipalities and nonprofits to thoughtfully design environments that best suit the specific needs of their communities, offering tailored support and shelter solutions.





# The Power of a Place to Call Home

By integrating these shelters into the community fabric, municipalities and nonprofit groups can offer a holistic response to homelessness—ensuring that individuals not only have a place to sleep but access to necessary support services as well.

## Collaboration for Transformative Impact

LifeSpace Shelters™ are built upon a framework of collaboration. By partnering with local organizations and stakeholders, municipalities can tailor the deployment of these shelters to the specific needs of their communities. This collaborative approach fosters community engagement and creates a sense of ownership among residents, ultimately leading to greater success in reintegrating individuals into stable housing.



Moreover, the commitment to responsible building practices and sustainability aligns with the growing emphasis on environmentally conscious solutions. LifeSpace Shelters™ are designed to be cost-effective in terms of long-term maintenance and operation, making them an economical choice for municipalities navigating tight budgets.

## Transforming the Landscape of Homelessness

The mission of LifeSpace Shelters™ goes beyond merely providing a roof; it's about restoring dignity and fostering a sense of belonging. By investing in strong, secure, and deployable structures for transitional and emergency housing, municipalities and nonprofit groups are taking a bold first step towards transforming the landscape of homelessness in our communities.

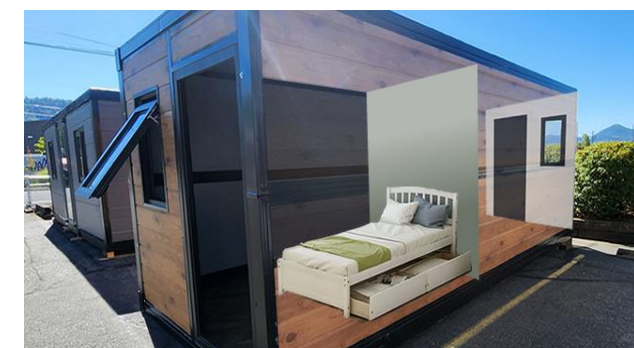
In conclusion, LifeSpace Shelters™ emerge as a beacon of hope in the fight against homelessness. By offering durable, adaptable, and multifunctional living spaces, they provide municipalities and nonprofit organizations with the tools to make a meaningful impact on their communities.

As we look toward a future where every individual has access to a place they can call home. LifeSpace Shelters™ provide a vital pathway to achieving that vision.

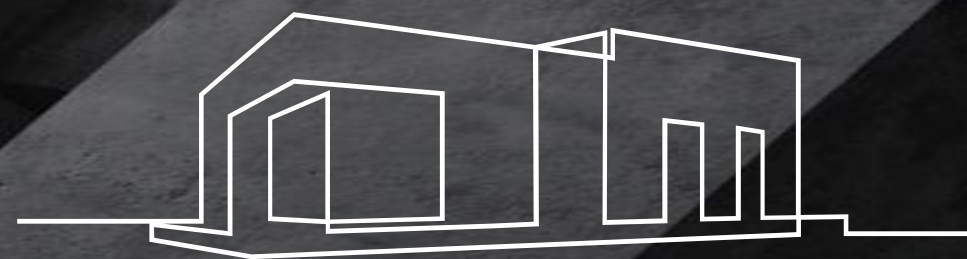
**“LifeSpace Shelters™ emerge as a beacon of hope in the fight against homelessness”**

LifeSpace Shelters™ offers a practical and a cost-effective approach to providing immediate housing for individuals experiencing homelessness.

Not only do these transitional shelters provide safe and comfortable living spaces, but they also serve as efficient living spaces in a lot of various settings, including urban and rural environments, temporary encampments, and scalable support facilities.







**UtilityMate®**  
MANUFACTURING

**WWW.UTILITYMATE.COM**

At the heart of our products is a commitment to innovative design that prioritizes aesthetics, affordability, functionality and quality. Each unit is crafted with a focus on maximizing space efficiency without sacrificing comfort or style creating an inviting atmosphere.

*The Management Team*

