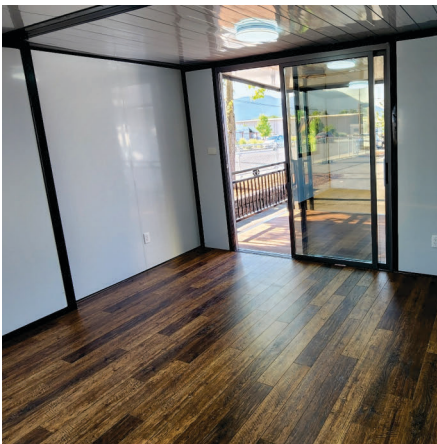




mysetngo.com



## Introducing **DeckHouse**™

**Secure / Private**  
**Move In Ready**  
**Meticulously Engineered**  
**Open Floor Plan Studio**  
**Finished Interior**  
**Optional Kitchen**  
**Large Bathroom**  
**“Best of Class”**

UtilityMate® Mfg. certified or listed by:



**J.D. POWER**

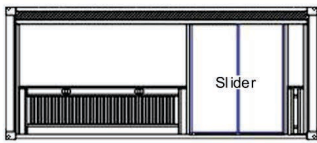




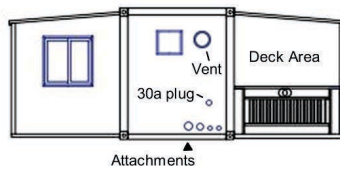
## 100% Steel Fabricated Frame



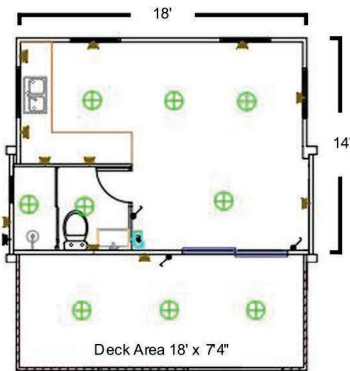
Front



Right



Top View



Total Livable Space: 252 sq ft

Total Deck Space: 131 sq ft

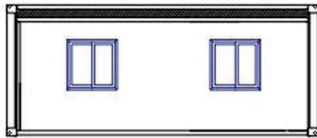
Windows:

Living 36" x 36" x 4

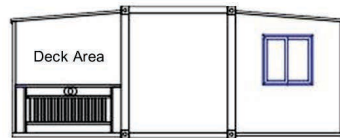
Bath (privacy) 21" x 21" x 1

Slider: 76" w x 85" t

Back



Left



**Set'nGo™ Deckhouse** is built using our best Commercial Grade **ShieldCore™** Products, including:

- Insulated Metal Siding
- Steel Insulated Core Panels
- Aluminum Framed, Dual Pane Tempered Glass, Adjustable Awning Windows
- 76" Wide Commercial Grade, Dual Pane Tempered Glass, Bi-Directional Sliding Door
- ½" Fiber Cement Sub-Flooring
- SPC Grade Flooring
- Exterior 30 Amp Power Twist-Lock, Waste and Water RV Connections

**Bi-Directional, Sliding Glass Door / Aluminum Window Frames / Steel Insulated Core Wall**



© 2024 UtilityMate® Manufacturing



**Dual ShieldCore™ Protection**







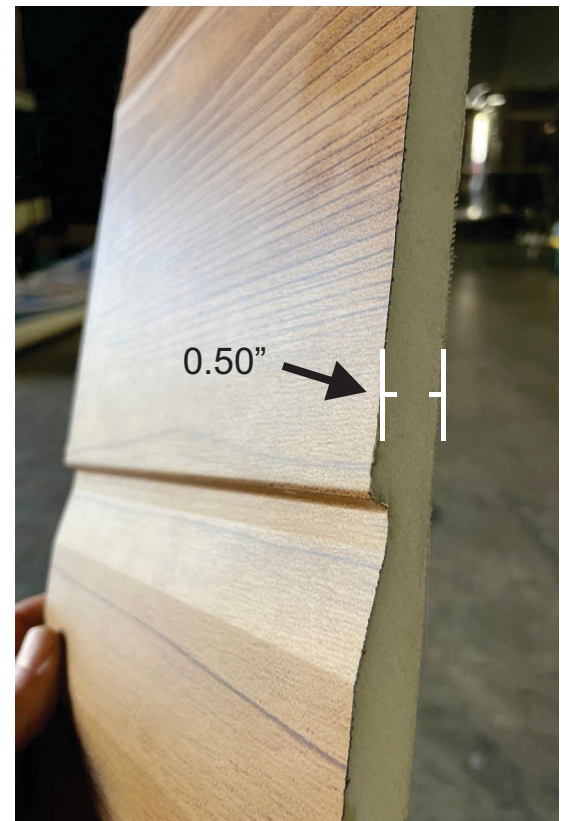
## Aluminum Zinc Composite Insulated Metal Panel (IMP) Siding

ShieldCore™ Exterior Siding pairs a natural look with exceptional performance and durability. ShieldCore™ siding is a commercial grade 1/2" thick IMP that comes in a variety of patterns, styles and colors.

### 3 Layers of Protection

The metal polyester powder coated outer layer provides protection against the elements. Due to their durability and high weather resistance, IMP siding requires less maintenance compared to other traditional building materials, resulting in true cost savings and less hassle.

IMPs provide excellent thermal insulation properties. The high density insulated core and reflective backing of IMPs helps maintain consistent indoor temperatures for long term energy savings.



Insulated core is 1/2-inch with  
a panel width of 16-inches

### Top 10 Features

1. Fire & Flame Retardant
2. Thermally Efficient - R18
3. Sound Dampening
4. Easy Installation
5. Weather & UV Resistant
6. Lightweight & Easy to Cut
7. Environmentally Green
8. Non-Fading Aesthetics
9. True Energy & Cost Savings
10. Insect and Rodent Resistant



Available in 20-foot lengths

[WWW.SHIELDCOREMFG.COM](http://WWW.SHIELDCOREMFG.COM)

**UtilityMate®**  
MANUFACTURING





Corinthian



Colonial



Timberline



TUSCAN