

**Set'nGO™**

@ Home  
@ Work  
@ Play



mysetngo.com



Model shown with optional Glass Slider



## Introducing **Getaway™**

**Secure / Private**  
**Move In Ready**  
**Meticulously Engineered**  
**Open Floorplan**  
**Finished Interior**  
**Plug-In Power**  
**Commercial Grade**  
**“Best of Class”**

UtilityMate® Mfg. recognized & listed by:

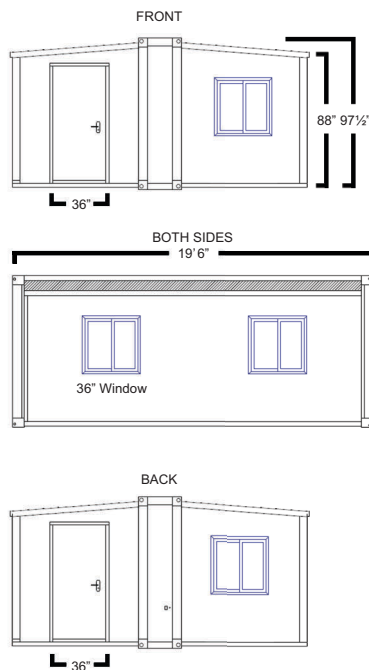
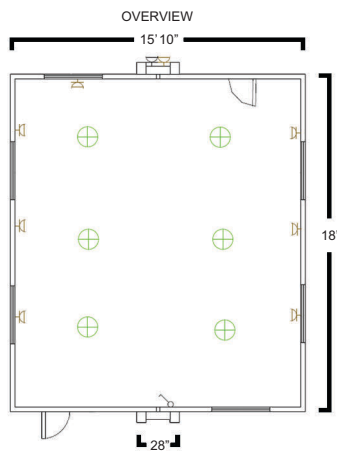


**J.D. POWER**





100% Steel Fabricated Frame



The **Set'nGo™ Getaway** is built using our best Commercial Grade **ShieldCore™** Products, including:

- Insulated Metal Siding
- Steel Insulated Core Panels
- Six 36" Aluminum Framed, Dual Pane Tempered Glass, Adjustable Awning Windows
- Two 36" Exterior Steel Doors for Front and Back Entry
- Optional Side Wall Installed, Dual Pane Tempered Glass, Sliding Door (replaces one to two windows)
- 1/2" Fiber Cement Sub-Flooring
- SPC Grade Flooring
- Exterior 30 Amp Power Twist-Lock RV Connection

Aluminum Window Frames / Exterior Steel Door w/ 4 in1 Dead Lock / Steel Insulated Core Wall







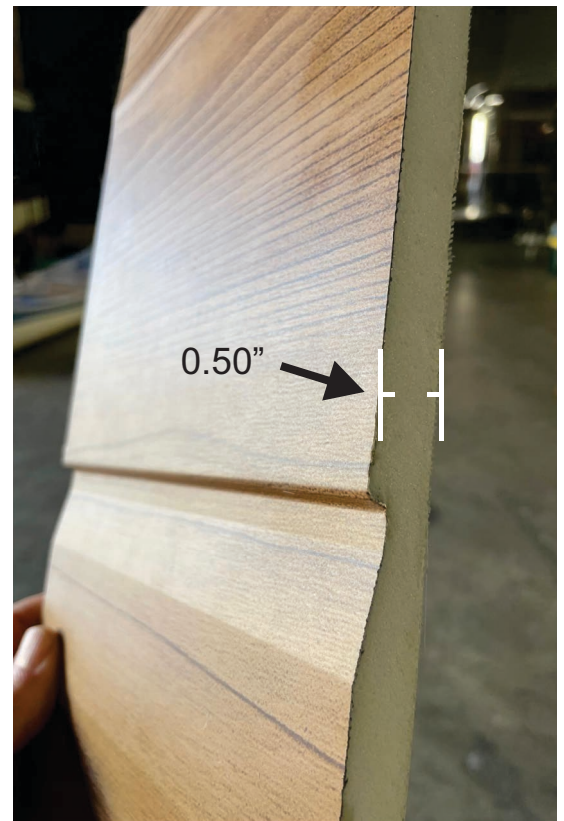
## Aluminum Zinc Composite Insulated Metal Panel (IMP) Siding

ShieldCore™ Exterior Siding pairs a natural look with exceptional performance and durability. ShieldCore™ siding is a commercial grade 1/2" thick IMP that comes in a variety of patterns, styles and colors.

### 3 Layers of Protection

The metal polyester powder coated outer layer provides protection against the elements. Due to their durability and high weather resistance, IMP siding requires less maintenance compared to other traditional building materials, resulting in true cost savings and less hassle.

IMPs provide excellent thermal insulation properties. The high density insulated core and reflective backing of IMPs helps maintain consistent indoor temperatures for long term energy savings.



Insulated core is 1/2-inch with  
a panel width of 16-inches

### Top 10 Features

1. Fire & Flame Retardant
2. Thermally Efficient - R18
3. Sound Dampening
4. Easy Installation
5. Weather & UV Resistant
6. Lightweight & Easy to Cut
7. Environmentally Green
8. Non-Fading Aesthetics
9. True Energy & Cost Savings
10. Insect and Rodent Resistant



Available in 20-foot lengths

[WWW.SHIELDCOREMFG.COM](http://WWW.SHIELDCOREMFG.COM)

**UtilityMate®**  
MANUFACTURING



