



# The Criterion

NEWSLETTER OF THE NORTHEAST CHAPTER OF THE PROFESSIONAL CAR SOCIETY  
SECOND QUARTER 1997 GREGG D. MERKSAMER, EDITOR

## RENDEZVOUS IN EDISON:

Grand tour of Wilner's Limo Service set for Sunday, July 20th



Bill Marcy bought his 1978 McClain Cadillac Flower Car from Dave Wilner's Limousine Service in Edison, NJ. Perhaps something similar will tempt you on our upcoming tour? These clever and relatively cheap Coupe DeVille conversions were built in Anderson, Indiana from the late 1960s to the early 1980s.

Northeast Chapter Vice President and Activities Director Bill Marcy has announced that he is planning a tour of PCS member Dave Wilner's Limousine Service and Auto Sales at 1710 Oak Tree Road in Edison, NJ for Sunday, July 20th. Northeast Chapter President Leo Maren is currently compiling directions to this event and he'll soon have a computer-generated map available to prospective participants.

The highlight of the tour will be Dave's 110 car fleet of funeral coaches, flower cars and limousines, which includes such collectibles as "2 horsepower" hearse built around 1850 and a Centennial Edition 1976 S&S Cadillac. Dave's father started in the livery business back in 1923, and the growth of this family operation over the last 75 years will be a central topic of his 1-1 1/2 hour tour. If we're extra lucky we'll witness one of Wilner's flower car conversions being

built, or how his company takes 1980 Cadillacs and turns them into 1992 models with a few clever substitutions of trim and equipment ("This process is still harder than it looks, though," Bill says). Wilner's also has professional cars for sale from time to time, and those who attend might see something as enticing as the 1978 McClain Cadillac flower car Bill Marcy purchased from this firm.

Requesting that Northeast Chapter members R.S.V.P. him at (201) 342-4871 regarding their intention to participate, Bill promises that "if we get a good turnout we'll be going on a lot more outings like these. Bring your procar with you July 20th if you can but, more importantly, please bring yourself since it's our first tour in some time." He adds that "suggestions for future tours and get-togethers are always welcome, of course."

## MINUTES & MOMENTS FROM OUR APRIL 20th MEETING

Hosted by **Craig & Roseanne Stewart**, the Northeast Chapter of the PCS held its spring business meeting at the First Presbyterian Church in Wood Ridge, NJ on April 20th. Attendees included National PCS President **Mike Barruzza**, **Dottie Forvour**, Chapter President **Leo Maren III**, **Jeff & Mary Hookway**, PCS Publicity Chairman and *Criterion* Editor **Gregg D. Merksamer** and **John Casiello**, the owner of a 1941 Cadillac Imperial Limousine who learned of the PCS through Craig's involvement in the North Jersey Cadillac Club. As for procars in the parking area Craig and Roseanne drove their rare 1978 Miller-Meteor Cadillac Limousine Style Ambulance (*above right*), while Northeast Chapter VP **Bill Marcy** brought his McClain Flower Car conversion of a 1978 Cadillac Coupe DeVille (*on page one*). Introducing us to his charming fiancée **Tracy Carroll**, **Fred Goerlitz** was even happier than if he'd had a new professional car to show off.

Until the Northeast Chapter settled down to new business, the early attendees imbibed chocolates shaped like Dodge Shadows and had great fun looking over the thick photo albums and procar catalogs Craig has been compiling since childhood (*below*). His



most intriguing holdings include a 1956 brochure for the Superior Beau Monde pillarless hardtop funeral coach, a 1956 "Meteorama" promo piece featuring this Piqua, Ohio coachbuilder's wood-veneered "Crestwood" models, and an interior detail shot from a '64 S&S ambulance



where the fire axe hooked into the seatback must have made a most threatening random element in a rollover! Looking at a 1957 Superior Criterion ad in one album, Mary Hookway looked at one model costumed as a nurse and quipped "you think they ever worked like that, wearing five inch stiletto heels?"

The continuing success of the national PCS Internet site at <http://www.professionalcar.org> (which has had more than 8,500 visits or "hits" since setting up shop last September) led Leo Maren to ask all PCS members with e-mail capability to send their address to him at [caddy@bellatlantic.net](mailto:caddy@bellatlantic.net). "With the show season getting underway, we should be taking full advantage of it to improve communications between PCS members," he said. "It's faster and cheaper than writing a letter and you don't have to think about the best time call someone back." Mike Barruzza added that both he and National PCS Secretary Beverly Ruff believe "it's a good idea" to add e-mail addresses to the next PCS roster.

In his capacity as the Chapter's Activities Director, Bill Marcy fielded suggestions for other outings in addition to the Wilner's Limousine Tour already scheduled for July 20th in Edison, NJ. A cookout along the Delaware River near Milford, PA or the shores of Lake Hopatcong in north central New Jersey were both suggested since these sites have plenty of parking as well as access to boat and beach-related activities. Roseanne Stewart also suggested Ringwood Manor, which has some securable parking facilities and is particularly convenient to New York City metropolitan area PCS members.

The April 20th meeting also proved that it wasn't too early to discuss the 1999 PCS International Meet,

which the Northeast Chapter will host in Lancaster, PA. A block of hotel rooms has already been secured for 1999 at the Best Western Eden Resort Inn & Conference Center, located just east of Lancaster near the junction of U.S. Highway 30 and PA 272 on Eden Road, at the rate of \$90 a night (only \$8 more than the 1997 meet in Baltimore this August 19-24). In addition to both indoor and outdoor swimming pools, two banquet halls with the ability to handle either 125 or 300 diners and a miniature refrigerator in every room, Mike said "this was definitely the best place we looked at. They gave us everything we wanted without any discussion. This was also the only hotel we went to that had its own professional car."

Bringing to bear their extensive experience in planning several Cadillac-LaSalle Grand National Meets, Northeast Chapter Co-Treasurers /Membership Directors **Andy & Karen Toton** have already volunteered to handle registration and show field layout. In addition, Bill Marcy volunteered to handle the awards, Dottie Forvour the banquet planning, Gregg Merksamer the publicity and Roseanne Stewart the activities arrangements. It goes without saying that volunteers are encouraged to get involved with any aspect of the meet that particularly interests them.

While Leo stresses that attendees will have at least one day to explore Lancaster County's attractions on their own, possible tour destinations were discussed including the Reading factory outlets and the Harley-Davidson motorcycle factory in York. The next Northeast Chapter meeting is tentatively scheduled for the middle of September, where further planning for the 1999 International Meet will take place.

## OTHER CAR CLUBS ROLL OUT THE RED CARPET FOR PCS

PCS members with Pontiac-chassied professional cars might be interested in becoming a charter member in a proposed non-regional Specialty Chapter in the Pontiac-Oakland Club International (POCI). To sign the chapter petition form, contact Paul Bergstrom at



### VERY VANCY, RANCE!

Lowell, Michigan PCS member, professional car dealer and bookseller *extraordinaire* Rance Bennett has begun to offer old-fashioned carved panel hearses custom built from modern Ford Econoline vans. Bennett adds decorative drapery panels flanked by ornate columns complete with capitals and brackets to the bodysides and the rear loading doors. The exterior effect is completed with coach lamps, funeral flag stanchions, wreaths and nameplates on the front doors and genuine wire wheels.

The casket compartment features cathedral style cherry wood paneling, ornate brass lanterns and a remote controlled electric casket table that also opens the rear doors automatically. The division panel is etched with a scene of an ornate carved panel hearse drawn by four horses. Stained and beveled glass are also available as options, and other exterior colors and interior woods can be fitted on request.

Rance's firm can also build service cars, flower cars and children's hearses, even though there's probably not as much call for the latter as there was at the turn of the century! Those wanting further information can contact Rance at (616) 897-5710, e-mail him at [rbennett@iserv.net](mailto:rbennett@iserv.net) or access his Web site at [www.hearse.com](http://www.hearse.com). His mailing address is 319 East Main Street, Lowell, Michigan 49331.

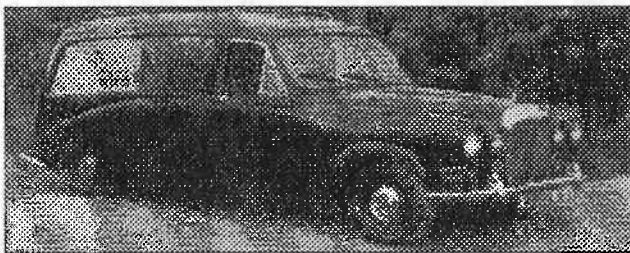
1250 Briar Street, Wayzata, Minnesota 55391 or call (612) 449-8811.

With the **Buick Club of America** meeting in **St. Louis, Missouri** from **July 16-20**, Pittsburgh area PCS member John Ehmer says that the BCA is looking for Buick-chassied procars to attend. The hosting chapter will even waive the registration fee for any procar displayed, although you'll still be obligated to pay for any connected tours, events and meals. For more information call John at (412) 563-4779 or write him at 1542 Princess Ave., Pittsburgh, PA 15246.

In case you have the whole week off when the PCS meets in Baltimore and you're also a member of the **Cadillac-LaSalle Club**, their **1997 Grand National** in **Chicago August 13-16** also features a professional car class. "Andy Toton met with their national board in February and made a presentation about the PCS, which convinced them to create this special subclass for commercial chassis Cadillacs," recalled National PCS President Mike Barruzza. "Most clubs do not have a class like this, so this is a very important opportunity for us. We made the big pitch, showed them the caliber of cars we have and got what we asked for, and now we need the cars to come out and support this new class." For further information on the meet call Tom or Jan McGuire in Lake Zurich, IL at (847) 540-5708. Next year's Cadillac-LaSalle Grand National will take place even closer to home, in Long Island.

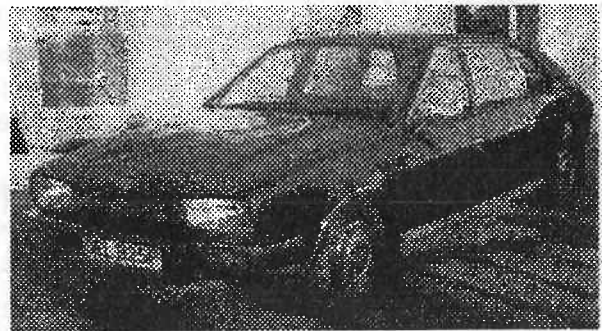
## PROCARS ACROSS THE POND

I frequently enjoy thumbing through British old car magazines that allow me to learn more about the vehicles Americans might get to see only when they travel overseas or watch PBS. Their classified sections sometimes yield an interesting photo or two of a



European professional car, such as this 1976 Daimler DS420 hearse placed in the May issue of *Classic Cars* by Zenith Classics of Westhoughton, Lancashire. While the coachbuilder wasn't identified (the photo was meant to represent one of five on offer for just £2995, the equivalent of \$5500) the styling features the big one-piece windows typically used on most British hearses to display the casket and flowers. Beneath windowsill level there is most likely a second compartment for removals and chair-carrying duties.

Often mistaken for a Rolls-Royce when the odd one is imported to the U.S. and painted white for weddings, the limousine version of the DS 420 was introduced in 1968 and built by Jaguar until only a couple of years ago at its Browns Lane Works in Coventry. When I toured this otherwise up-to-date factory back in 1989, my group visited a separate building where about a dozen of these ministerial behemoths were being hand-built with no "assembly line" to speak of and each car sitting on its own trolley. The bodysHELLS destined for conversion into a funeral coach by an outside firm were identified by the steel tubes welded across their rear door openings. The standard of workmanship was obviously very high, with flaws in the paint invisible to the naked eye circled in chalk for later rectification.

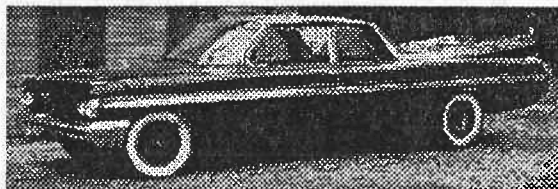


"DEL 825P" (British cars wear one license plate from delivery to dismantlement) is a late 1970s Austin Princess (nicknamed "the wedge" for obvious reasons) stretched into a classy formal limousine by Woodall Nicholson of Halifax. It must have been a sharp one since the April issue of *Classic & Sportscar* said it sold for £4650 at a Parkes Auction compared to the £650 or thereabouts some sell for in the adverts.

## CRITERION CLASSIFIEDS:

**1940 Henney-Packard Series 1801 Hearse/Ambulance.** Restoration started, body sandblasted and primered. Covered dual sidemounts, 3-way entry. \$3,500. Joe Napoli, (201) 251-9746.

**1962 Pontiac Flower Car Prototype by Armbruster Stageway.** Losing storage for hand-built one-off stretched from a 2-door Catalina body by the famous factory in Fort Smith, Arkansas. Complete and running but needs restoration. Seats five. Hi-compression 389 2-barrel police/taxi motor. Best offer. Dave Csimbok, (908) 541-2794 or e-mail [AMCXpress@aol.com](mailto:AMCXpress@aol.com).



**1948 Packard Model 2271 Seven Passenger Sedan.** In excellent condition with only 40,500 miles. \$13,900. Rich Mueller, E&R Automotive, Milton, NJ 07438 or (201) 208-9594.

**1950 Chrysler Crown Imperial Limousine.** Complete and running but needs restoration. \$3000. Sal Anicito, (201) 440-5337 days.

**1958 S&S Cadillac Victoria Hearse.** Good running condition, new exhaust. Needs restoration. Best offer. Anthony L. Perito, (718) 931-6149 (Bronx, NY).

**1958 Eureka Cadillac Limousine-style Combination Coach.** Original gray finish with matching crinkle-finish top and optional rear wrap-around corner windows. This 44,000 mile car attended the 1978 and 1982 PCS International Meets before going into carriage house storage in 1986. Asking \$6,500. Carlton Ham, (603)934-4913 or e-mail [whtmtman@aol.com](mailto:whtmtman@aol.com). Also selling **1967 Miller-Meteor Cadillac Embassy Flower Car**, one of six built during 1967 model year. 50,000 miles, Inverness Green with black crinkle-finish roof. Trophy winner at several PCS International Meets and the 1995 Cadillac-LaSalle Grand National in Albany. \$15,995.

**1974 Superior Cadillac High Top Ambulance.** Complete equipment and emergency lighting, 93,000 miles, some rust on hood and rear quarter panels. \$1,000. Jim Spahr, (610) 527-0223.

**1977 Superior Cadillac Funeral Coach.** Russet red exterior, black interior and Landau-style top. 66,000 miles. Tape deck. Newly inspected and excellent running condition. Needs body repair on passenger side after being sideswiped by a deer. Asking only \$900. Brian Stahl, (412) 563-4779 or E-mail [hogid@ix.netcom.com](mailto:hogid@ix.netcom.com).

**1981 S&S Cadillac Victoria Funeral Coach.** Black, 75,000 miles, \$3,500. Also selling **1980 Cadillac Metropolitan Standard Wheelbase Flower Car Conversion.** Features tonneau cover, 70,000 original miles. \$4,900. Bill Marcy, (201) 342-4871.

**WANTED: 1959-74 Cadillac Ambulance.** Mike Murphy, (301) 577-7923 or E-mail [murphy\\_m@bls.gov](mailto:murphy_m@bls.gov).

**WANTED: 1971-6 M&M or S&S Combination or Limousine Style Hearse.** Also selling **1984 Armbruster-Stageway 6-door Limousine.** E-mail George Tower at [tower@tiac.net](mailto:tower@tiac.net).

**WANTED: Repair/Service Manual** for 1970s Superior Flower Car rear deck. Mike Barruzza, (215) 788-8105.

## CRITERION CALENDAR:

**June 12-14 (Thurs.- Sat.), Lakehurst, NJ:** Convention of the Society for the Preservation and Advancement of Antique Motorized Fire Apparatus of America (SPAAMFA). Vintage ambulance owners who might be interested in attending should contact Craig Stewart at (201) 438-1757.

**June 21st (Sat., rain date Sun. 22nd), Bethlehem, PA:** Concours of the Eastern United States, at Lehigh University's Mountaintop Campus.

**June 28th (Sat.), Sayreville, NJ:** 4th Annual Antique Fire Apparatus Muster & Flea Market at the Middlesex County Fire Academy, 10am-4pm. For more info: Helen Burns, (908) 463-7445.

**June 28th (Sat.), Kings Point, NY:** Great Neck Fire Apparatus Show & Muster at the U.S. Merchant Marine Academy. For more information call (516) 487-1057.

**June 28th (Sat.), Harrisburg, PA:** Central Region Cadillac-LaSalle Club show at Brenner Cadillac.

**July 13th (Sun.), Doylestown, PA:** Display day for Special Interest Class SI at 22nd Annual Heart of Bucks Automobile Show, sponsored by the Doylestown Area Jaycees at the War Memorial Field on Route 202. Benefits Bucks County Council Boy Scouts of America. \$6 pre-registration until July 5th (\$12 day of show) payable to: Heart of Bucks Automobile Show, P.O. Box 1068, Doylestown, PA 18901. For more info: (215) 345-8481.

**July 13th (Sun.), Easton, PA:** 200th Anniversary Birthday Parade featuring vintage emergency vehicles. For more information call Mike Barruzza at (215) 788-8105 or write Celebration Committee, Easton Fire Dept., 11 North 6th Street, Easton, PA 18042.

**July 25-27 (Fri.-Sun.), Carlisle, PA:** Summer Carlisle, at the Fairgrounds. For more info: (717) 243-7855.

**August 2-3 (Sat.-Sun.), Macungie, PA:** Das Awkscht Fescht. To pre-register call (610) 967-2317.

**August 3rd (Sun.), Glenside, PA:** The Greater Glenside Chamber of Commerce invites PCS members to join the SI-17 Special Interest Class of their 4th annual car show. An entire mile of Easton Road between the train station and the Beaver College Campus will be closed to traffic for this mall-style event. Entrants that pre-register by July 26, 1997 save \$5 (show registration costs \$20 per car) and receive a special commemorative plaque. For more information contact Jack Ripley at 346 Monroe Ave., Glenside, PA 19038 or (215) 887-9084.

**August 9th (Sat.), New Hope, PA:** Professional Car Class on display today

**August 13-16 (Wed.-Sat.), Chicago, IL:** 1997 Cadillac-LaSalle Club Grand National will have a professional car class. Must be a Cad.-LaS Club member to participate. Further info: Tom or Jan McGuire, (847) 540-5708.

**August 19-24 (Tues.-Sun.), Timonium, MD:** 21st Annual International Meet of the Professional Car Society, hosted by the Mid-Atlantic Chapter at the Marriott Hunt Valley Inn, 245 Shawan Road East, Exit 20-A off Interstate 83. Activities include motorcades to the B&O Railroad Museum on Thurs., Aug. 21 and the Fire Museum of Maryland on Sat., Aug. 23, where regional EMS squads will display their rigs alongside those of the PCS and the Association for the Preservation of Historic Ambulances. Concours judging will take place on Fri., Aug. 22nd at the Ladew Topiary Gardens, followed by a delicious catered lunch at the gardens' fox hunters lodge. "Early bird" activities include a visit to historic Fort McHenry on August 19th and a tour of Washington D.C. on August 20th. For registration materials write to PCS 1997 International Meet, P.O. Box 2023, York, PA 17405, fax (301) 649-1069 or phone Mid-Atlantic Chapter President Gene Lichtman at (301) 649-1321.

Room reservations at \$82 PCS rate (single or double) should be made directly with hotel at least 30 days in advance by calling (410) 785-7000. Non-smoking and wheelchair accessible rooms available on request.

**August 30th (Sat.), Boyertown, PA:** Duryea Days Car Show & Flea Market. For more info: (610) 367-2090.

**August 31st (Sun.), Langhorne, PA:** 5th Annual Buck County Auto Show at Core Creek Park, 901 East Bridgetown Pike, from 10am-4pm. Professional cars will be registered exclusively in Class #18. Registration is \$8 in advance (due by 8/23), or \$10 at the gate. Make pre-registrations payable and mail to: Churchville Nature Center, 501 Churchville Lane, Churchville, PA 18966.

**September 1st (Mon.), Ludwig's Corner, PA:** Labor Day Horse and Antique Car Show.

**September 12th (Fri.), West Chester, PA:** Vintage emergency vehicles are invited to participate in Cruise Night/Police Night at the Faulkner dealerships. For more information call Don Miller at (610) 647-1358.

**September 20th (Sat.), Boonton, NJ:** 16th Annual Muster & Flea Market of the Antique Fire Association of NJ at the NJ Fireman's Home, Lathrop Ave. & Wootton St., Exit 45 off I-287. For more info: (201) 228-2188.

**September 20-21 (Sat.-Sun.), Reading, PA:** 3rd Annual Trains, Planes & Automobiles Show, at the Mid-Atlantic Air Museum, 11 Museum Drive, Building 206, Reading Municipal Airport. Transportation-related models will be featured in the flea market. For more info: (610) 372-7333.

**September 21st (Sun.), Lahaska, PA:** Valley Forge Region Cadillac-LaS "Local National" at Peddler's Village.

**September 26-28 (Fri.-Sun.), Englishtown, NJ:** Auto show & swap meet. For more info: (908) 446-7800.

**October 1-4 (Wed.-Sat.), Carlisle, PA:** Fall Carlisle, at the Fairgrounds. For more info: (717) 243-7855.

# THE PROFESSIONAL CAR SOCIETY

*"Dedicated to the restoration and preservation of vintage ambulances, funeral cars & livery vehicles"*

## NORTHEAST CHAPTER

### CHAPTER PRESIDENT:

Leo M. Maren III  
369 Chestnut Street  
Stirling, NJ 07980

(908) 647-3738  
caddy@bellatlantic.net

### SECRETARY:

Mary M. Hookway  
201 Glenside Trail  
Sparta, NJ 07871

(201) 729-8083

### VICE-PRESIDENT & ACTIVITIES DIRECTOR:

Bill Marcy  
349 Lookout Avenue  
Hackensack, NJ 07601

(201) 342-4871

### CHAPTER CO-TREASURERS & MEMBERSHIP DIRECTORS:

Andrew & Karen Toton  
765 Livezey Street  
Philadelphia, PA 19128

(215) 483-2078

### CRITERION EDITOR & NATIONAL PCS PUBLICITY:

Gregg D. Merksamer  
37 Hardscrabble Road  
Briarcliff Manor, NY 10510

(914) 741-0957  
Merks62@prodigy.com

### CRITERION PUBLISHER & NATIONAL PCS PRESIDENT:

Michael A. Barruzza  
700 Beaver Street  
Bristol, PA 19007

(215) 788-8105  
Fax: (215) 788-1931

Servicing Professional Car Society members in New Jersey, New York and Pennsylvania, the Northeast Chapter of the PCS operates under a charter granted by the Society's Board of Directors on August 19th, 1986. Subscription to this publication is by membership in the Chapter through the Membership Director listed above. **Membership in the national organization of the PCS is a prerequisite to membership in any of its regional chapters.** Details on joining can be obtained from National Secretary Beverly Ruff at P.O. Box 9636, Columbus, Ohio 43209 or by accessing the official PCS home page at <http://www.professionalcar.org>.

078711227

THE PROFESSIONAL CAR SOCIETY

JEFF & MARY HOOKWAY  
210 GLENSIDE TRAIL  
SPARTA, NJ 07871

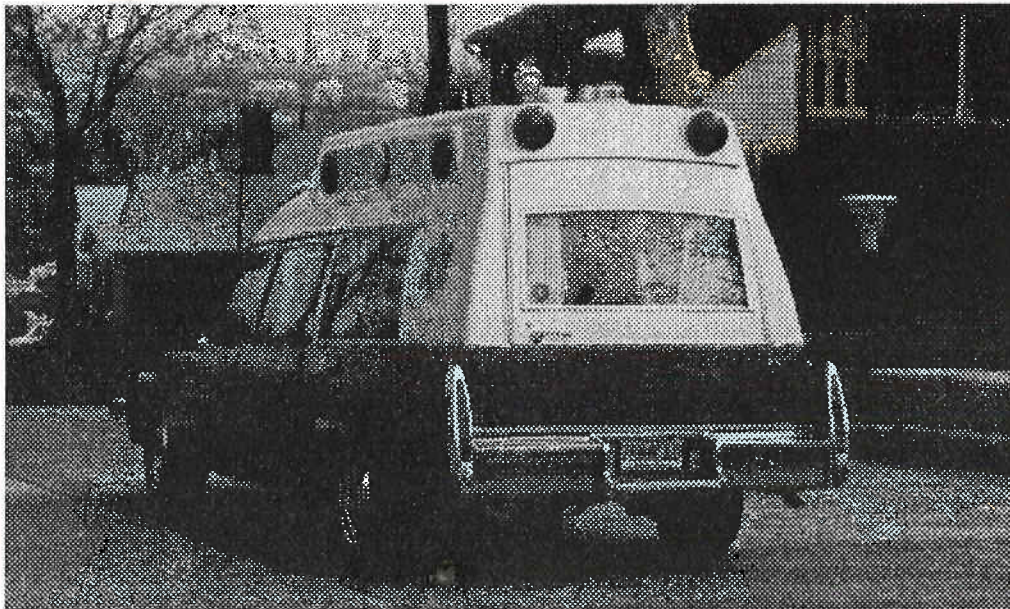
FIRST CLASS MAIL



THE PROFESSIONAL CAR SOCIETY  
Northeast Chapter  
700 Beaver Street  
Bristol, Pennsylvania 19007-3823

# The Criterion

NEWSLETTER OF THE NORTHEAST CHAPTER  
OF THE PROFESSIONAL CAR SOCIETY



With the Manhattan skyline visible on the horizon, Craig Stewart's 1978 Miller-Meteor Cadillac high-top heads for the nearest diner following the Northeast Chapter's spring meeting in Wood Ridge, NJ April 20th. **SEE YOU ALL AT THE 21st PCS INTERNATIONAL MEET IN TIMONIUM, MD AUGUST 19-24!!!!**