



# *The Criterion*

NEWSLETTER of the NORTHEAST CHAPTER of the PROFESSIONAL CAR SOCIETY

First/Second Quarter 2001

Gregg D. Merksamer, Editor

## FULL CALENDAR FOR NORTHEAST PROCAR FANS

**Chapter heading to Gambardella's livery in Yonkers,  
September brunch in scenic Milford, PA**

With the Silver Anniversary PCS International Meet destined to take place in Missouri this coming August, Northeast Chapter members in need of closer-to-home diversion should be pleased to hear that this coming summer and fall will present a full, rich calendar of activities for the fans of funeral cars, limousines and ambulances, which is listed unabridged in the back of this issue.

Among the highlights, Northeast Chapter V.P. and Activities Director Bill Marcy has rescheduled the **Gambardella's Livery Service tour**, originally slated to take us to Yonkers, NY on March 6th, for **Sunday, July 1st at 1 p.m.** "I can absolutely promise there will be no snow this time," he says, noting that Tom Gambardella's fleet includes a 1976 S&S Centennial funeral coach, a 1969 Rolls-Royce Phantom VI limousine offering enough headroom for a crown, a low deck "Western-style" 1965 S&S Cadillac flower car and, perhaps the rarest of all, a 1938 S&S LaSalle carved panel hearse. "Unless you made it to the 1995 PCS International in Fort Wayne or Chicago in '98, this will be the first chance many of us will get to see one," Bill adds. While the tour will ultimately conclude with a hearty meal at Spiritoso's Italian Restaurant at 811 McLean Avenue in Yonkers, Bill says "there is the also possibility of a follow up tour of Phil Greco's 40-car collection. He's a member of the Cadillac Club of North Jersey who lives in Yonkers, and his fleet includes a number of low-mileage 1970s Cadillacs and a 1966 Chevrolet Caprice 396."

**Located at 18 ½ Park Hill Avenue in Yonkers, Gambardella's Livery Service** (phone # 914-968-5898) **can be reached from the Tappan Zee Bridge and points north** by picking up the Cross-Westchester Expressway (Interstate 287), taking the first exit after I-87 breaks off (*not* the first exit after the tolls) for NY 119/Saw Mill River Parkway, accessing the southbound parkway by turning left at the traffic signal at the end of the exit ramp and turning right beyond the gas station (there are "S.M.P." signs). Exit the Saw Mill River Parkway at Yonkers Avenue (exit 5), make a right turn at the end of the ramp and follow Yonkers Avenue westbound to a "jog left" merge with Nepperhan Avenue. By City Hall park turn left at light onto New Main Street heading southbound, and left again at the next light onto Park Hill Avenue; "Tom's Garage" is up the first driveway on the right.

**To reach Gambardella's Livery from the George Washington Bridge Lower Level and points south**, take the northbound Major Deegan Expressway (Interstate 87) to McLean Avenue (exit 1), turn left at the end of the exit ramp and follow McLean Avenue westbound to South Broadway (US 9). Make a right onto northbound US 9, and another right onto Park Hill Avenue opposite the McDonald's and St. Joseph's Medical Center. Go straight through the light at New Main Street and "Tom's Garage" is up the first driveway on the right.

Planning further ahead, Bill has also scheduled a **PCS Northeast Chapter autumn brunch** at the Mount Haven Resort outside of the scenic, Delaware River town of **Milford, PA** for **Sunday, September 9th at 12 noon**. "There's plenty of parking space for showing off your professional cars, and their \$8.95 breakfast may be one of the best in that part of Pennsylvania," Bill promises. Directions to Mount Haven, also reached by phoning 570-296-8502 or 1-800-553-1530 outside of PA, are as follows:

**From Interstate 84 and points east:** Take exit 10 for Milford, following US 6 eastbound about two miles to Sixth Street where you make a right at the bank, go four miles and follow the signs to Mount Haven.

**From Scranton, Wilkes-Barre and points west:** Take exit 9 off Interstate 84 (Lord's Valley), making a right off the exit ramp onto PA 739 south/eastbound. Travel approximately seven miles to bank, make a left and follow signs six miles to Mount Haven.

**From New Jersey:** Pick up US 206 northbound using NJ 15 or Interstate 80. After crossing toll bridge to PA bear right towards Milford, going 1 ½ miles to the traffic light. Two blocks past the light make a left turn at the bank onto Sixth Street and follow the signs to Mount Haven.

### CADILLAC-LASALLE CLUB'S VALLEY FORGE CHAPTER TO WELCOME PCS SEPT. 30th

Extremely active in the **Cadillac-LaSalle Club** and the proud owner of a pristine 1970 Miller-Meteor funeral coach/ambulance "combination" (*upper right*), Philadelphia Chapter member Andy Toton has notified Your Editor that the **CLC's Valley Forge Chapter** is rolling out the welcome mat to PCS members who are not yet CLC members by offering free pre-registration to its **Sunday, September 30th fall meet in Lahaska, PA**, situated some ten miles west of New Hope and touting more than one hundred antique shops, boutiques and restaurants of its own. "This is a great event, with nearly eighty Cadillacs



With its removable landau panels, Andy Toton's 1970 Miller-Meteor Cadillac "combination" was designed for small-town funeral directors who ran ambulance services on the side.

attending in a typical year," Andy says. "Reaching out to collectors who are not national or regional CLC members, Valley Forge will waive the standard \$12 day-of show fee for any Northeast or Mid-Atlantic Chapter PCS member who contacts me at least a week beforehand," by calling Andy at (215) 483-2078 all weekend or from 11am-3pm on weekdays, or by e-mailing him at [combo70@aol.com](mailto:combo70@aol.com). "To take advantage," Andy adds, "you have to bring a non-modified professional car (adhering to the same no-casket criteria enforced at PCS meets, and displaying no extra trophies), but it can be any make or model whether you have a Lincoln, Volvo, Cadillac, Buick, Pontiac, Packard or even a Daimler. The doors are open to you."

### RENAULT WINERY REVISITED

"The weather was, once again, cold and, once again, the flowers had not yet come into bloom, but once inside things were real cozy," Northeast V.P. and Activities Director Bill Marcy recalled of the Chapter's second annual brunch at the Renault Winery in Egg Harbor City, NJ on Sunday, April 1st. "While our group was a little smaller than last year we had still 19 people in attendance including Jeff & Mary Hookway, Elaine & Harvey Schofield, Mike Barruzza and a friend, Jeff McQuaid and his father, and Barry Caselli with his white Cadillac limousine and several of his friends." Other professional cars on hand included Harvey Schofield's 1967 Lehmann-Peterson Lincoln mini-limousine and Jeff McQuaid's 1978 S&S Cadillac funeral coach.





**PARK AVENUES CAN PARK HERE:** Far less common than a Cadillac or Lincoln limousine these days, this Buick Park Avenue stretch was shot by Your Editor outside the Javits Convention Center while the 2001 New York International Auto Show was taking place. The coachbuilder isn't known, but the selling dealer is Mario d'Addario of Shelton, CT.

## HOOKWAYS HEAD TO ROCKLAND OPEN HOUSE

Northeast Chapter Secretary Mary M. Hookway recently reported that she and her husband, our new Chapter Treasurer Jeff Hookway, "had the pleasure" of taking Paul Vickery's 1956 Miller Cadillac ambulance to the Rockland County Volunteer Fire Services Museum Expo in Pomona, NY on May 5th (we can assume that Paul & Donna Vickery have been otherwise occupied, given that their second child Claire Katherine joined older brother Ian in the family nest last November 9th). "The expo included antique fire apparatus and police cars," Mary writes, "and although Paul's '56 was the only professional car in attendance, several older box-type ambulances were there." She adds that the museum, located at 35 Firemens' Memorial Drive in Pomona, is "worth a visit for fire buffs" with its extensive exhibits of antique fire apparatus and a full photo history of Rockland County's fire services. Since there's no set operating schedule, telephone curator Matt Mann at (845) 364-8974 to schedule a visit.

## ALBANY WANTS YOU!

According to Your Editor's Hometown Paper *The Warwick Advertiser*, the New York State Senate's latest budget resolution will attempt to address the dwindling ranks of volunteer fire departments and ambulance corps by offering free college tuition. With the Fire Association of the State of New York noting that the total number of emergency service volunteers in the state has fallen by at least 11,000 (to 109,000 total) over the last five years, the Senate's \$2.5 million proposal will provide active volunteers who have served a least a year with up to \$3,400 that could be used at any college in New York State, enough to fund a year's tuition at a SUNY or CUNY-level school. "We need to do all we can to encourage people to volunteer, in the interest of public safety," says state Senator Tom Morahan, and "the education assistance program can provide a great incentive, especially toward encouraging our young people to volunteer." Some 2,000 people annually already take advantage of a similar program enacted in 1996 to help fill vacancies in the NY State National Guard.

## RECOMMENDED READING

If you're looking for a good read to pass the time between crowds while sitting by your rig at this summer's car shows, Merrillville, IN PCS member Rich Conjalka does himself proud with his first book "Classic American Limousines: 1955-2000 Photo Archive," a brand-new title from Iconographix that's similar to the ambulance and funeral coach paperbacks compiled for this publisher by Walt McCall and Tom McPherson. In addition to Cadillac's relatively common "factory formal" limousines, Rich's high-quality collection of images includes such rarities as the Chrysler Crown Imperials of which only 132 were hand-built by Ghia of Italy from 1957-65, Andy Hotten's Ford LTD hardtop limousines from the mid-1960s and the armor-plated Presidential limousines and Secret Service escort vehicles constructed by O'Gara, Hess

& Eisenhardt of Cincinnati. It's well worth \$29.95 plus \$4.50 shipping & handling from Iconographix, 1-800-289-3504 or P.O. Box 446, Hudson, WI 54016.

Stan Holtzman, a PCS member who serves as a regular contributor to *RoadKing* and *10-4 Express* magazines, is also touting his fourth book on open highway-going trucks entitled "Big Rigs." This 160-page, 9 x 12 format hardcover contains a general overview of the 100-year history of these workhorses, illustrated with period advertisements and 275 black-and-white and color photos covering such major makes Mack, Peterbilt, Kenworth, Freightliner, International, Western Star and White. In addition to bookstores and gift shops, this 9x12 format book can be ordered for \$29.95 plus \$3.95 for shipping and handling from Voyageur Press, 1-800-888-9653 or P.O. Box 338, Stillwater, MN, 55082.

## CRITERION CLASSIFIEDS:

**1975 Superior Pontiac Combination:** Solid, two-owner example from the last year of production with 43,000 original miles and unusual dark green paintwork with black top. \$4,000 OBO. **Also selling 1940 S&S Cadillac hearse** with solid body, original drapes in storage after being dry-cleaned. Not running but ideal for restoration. Best Offer. Elton Alexander, Alexander Funeral Home, P.O. Box 216, Stoneboro, PA 16153 or (724) 376-7131.

**1983 Eureka Cadillac Limousine:** 124,000-mile example with blue interior, jump seats, no divider. Black exterior needs paint, A.C. needs recharge. \$2,000 OBO. Tony Barruzza, (215) 781-1736 after 5pm.

## CRITERION CALENDAR:

**June 9th (Sat.), Caldwell, NJ:** Caldwell Fire Dept.'s 100th Anniversary parade, 1pm rain or shine. First and 2nd place trophies to be presented in the limousine ambulance class 1978 and older. Applications available from the Caldwell F.D., 30 Roseland Ave., Caldwell, NJ 07006, or by contacting Craig Stewart at [Caddyamb@aol.com](mailto:Caddyamb@aol.com) or (201) 438 1757 from 7-9pm.

**June 10th (Sun.), Hawthorne, NJ:** Limousine-style ambulances sought for static display at Hawthorne, NJ Ambulance Corps open house, noon-4pm. For further information contact Craig Stewart at [Caddyamb@aol.com](mailto:Caddyamb@aol.com) or (201) 438 1757 from 7-9pm.

**June 13th (Wed.), Paramus, NJ:** Cadillac Club of North Jersey cruise departs Fireplace Char Broil on NJ 17 northbound at 6pm, heading for the Dairy Queen in Montvale, NJ.

**June 16th (Sat.), Roselle Park, NJ:** Limousine-style ambulances sought for Roselle Park Fire Dept.'s 100th Anniversary celebration and parade, 11am-7pm. For more information call the RPFDD at (908) 245-2300.

**June 16th (Sat.), Bethlehem, PA:** Burn Prevention Foundation's 12th Annual Concours of the Eastern U.S. at Lehigh University's Mountaintop Campus, 9am-4:30pm.

**June 23rd (Sat.), Manville, NJ:** Antique Fire Apparatus Association of Central NJ sponsors its 8th Annual Antique Fire Muster at Duke's Park, 10am-4pm. For more information call Helen Burns at (732) 463-7445.

**June 30th (Sat.), King's Point, NY:** Great Neck Antique Fire Apparatus Muster at US Merchant Marine Academy, Steamboat Rd., 10am -4pm. Call (516) 487-1057 for registration information.

**July 1st (Sun.), Yonkers, NY:** PCS Northeast Chapter tour of Gambardella's Livery Service, 18 ½ Park Hill Ave., 1pm. To be followed by supper at Spiritoso's Italian Restaurant, 811 McLean Ave. For more information call Bill Marcy at (201) 342-4871, or Tom Gambardella at (914) 968-5898 for directions.

**July 12th-15th (Thu.-Sun.), St. Paul, MN:** Great Midwest Tri-Chapter Meet hosted by Northland, Wisconsin and Illini Chapters of PCS. Features Saturday open house and show at Road Rescue ambulance factory. For more information call Tony Karsnia at (651) 306-0510 or e-mail [tcriterion@prodigy.net](mailto:tcriterion@prodigy.net).

**August 1st-4th (Wed.-Sat.), Lebanon, MO:** Holman-Howe Funeral Home hosts the Professional Car Society's 25th Annual International Meet at the Hampton Inn, exit 127 off Interstate 44. Highlights include Saturday's indoor car show at the Kenneth E. Cowan Civic Center, as well as visits to Da Bryan Coach Builders in Springfield, the Dixie Stampede Theater in Branson and the home of "Little House on the Prairie" author Laura Ingalls Wilder. For more information call Kenneth Howe or Bobby Suchman at (417) 532-4061, E-mailing [holman@advertisenet.com](mailto:holman@advertisenet.com) or write PCS 2001 c/o Holman-Howe Funeral Homes, P.O. Box 28, Lebanon, Missouri 65536. Accommodations at a special PCS rate of \$67 plus tax can be reserved by phoning the Lebanon Hampton Inn at (417) 533-3100, while alternate lodgings should be available at the nearby Holiday Inn Express (1-800-Holiday) and Super 8 motel (417-588-2574).

**August 2nd-5th (Thu.-Sun.), Kansas City, MO:** Combined conventions of the Emergency Vehicle Owners & Operators Association and the Police Car Owners of America. For more information E-mail John Bujosa at [evooa@spokane.net](mailto:evooa@spokane.net).

**August 5th (Sun.), Macungie, PA:** Club Day at 37th Annual Das Awkscht Fescht, Macungie Memorial Park. PRE-REGISTRATION REQUIRED. For more information call Mike Barruzza at (215) 788-8105.

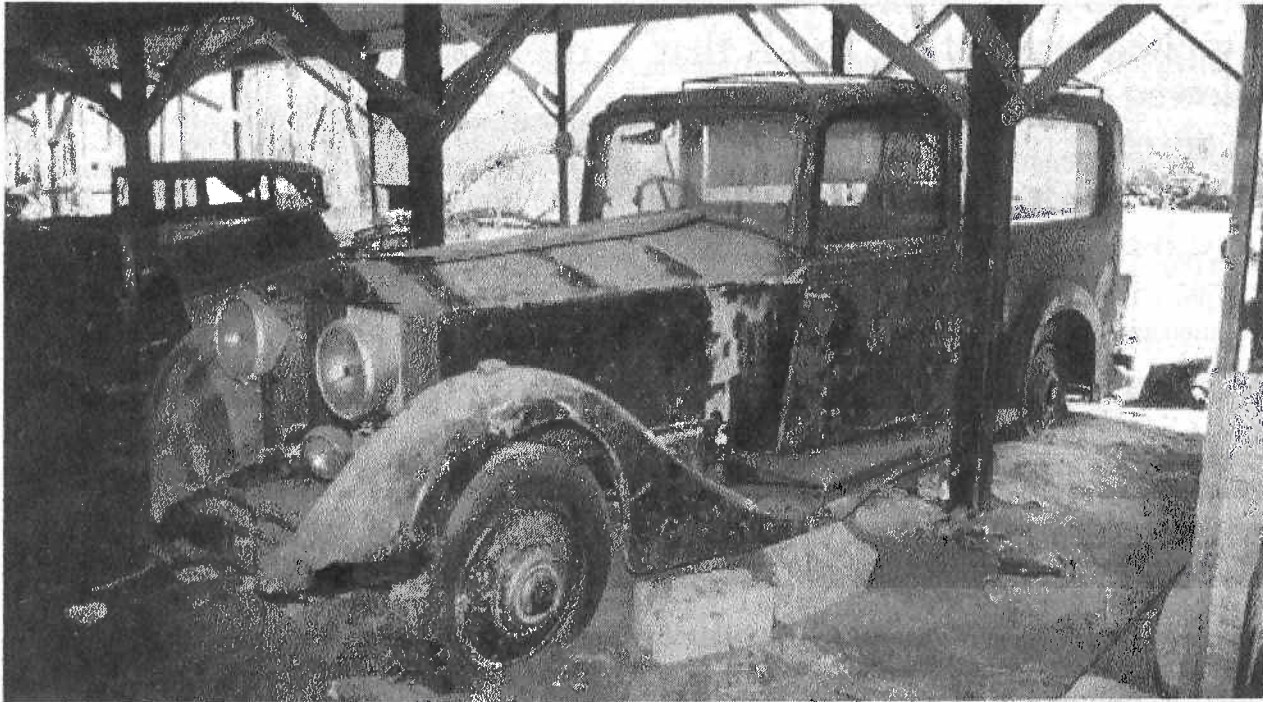
**August 11th (Sat.), New Hope PA:** Class PC for professional cars and livery vehicles through 1979 at 45th Annual New Hope Automobile Show. PRE-REGISTRATION NOW REQUIRED - write P.O.Box 62, New Hope, PA, phone (215) 862 5665 or log onto [www.newhopeautoshow.com](http://www.newhopeautoshow.com).

**September 9th (Sun.), Milford, PA:** PCS Northeast Chapter autumn brunch, 12 noon at the Mt. Haven Resort. Event features \$8.95 breakfast, extensive parking for professional cars. For directions call (570) 296-8502 or 1-800-553-1530 outside of Pennsylvania, or e-mail [mthavenresort@pikeonline.net](mailto:mthavenresort@pikeonline.net).

**September 30th (Sun.), Lahaska, PA:** Unmodified professional cars of any make invited to annual Fall Meet of the Cadillac-LaSalle Club's Valley Forge Chapter. Interested PCS members who are not CLC members that contact Andy Toton by September 22nd receive free pre-registration; \$12 day-of-show fee otherwise applies. Call Andy at (215) 483-2078 weekends or 11am-3pm weekdays, or e-mail [combo70@aol.com](mailto:combo70@aol.com).



## IN THE "THEY'RE STILL OUT THERE" DEPARTMENT . . .



Reporting his discovery to Great Britain's *Classic & Sports Car* magazine, Daniel J. Rapley of Bethel, CT came across this glass-paneled Rolls-Royce Phantom II funeral coach among more than 100 cars left near Fayetteville, NC by a now-deceased tycoon who made his money in Mountain Dew. The horde even included a transporter, complete with eight cars, that had been bought at Hershey many years before and never unloaded.

Jerry Windle, editor of the Ford magazine *V-8 Times*, recently published this photo of an ultra-rare 1951 Ford funeral coach or ambulance constructed by Siebert of Toledo, OH, which was snapped in a Tom's Brook, VA salvage yard by Monroe A. Hovey of Romney, WV. Not much info, granted, but enough to go on if you're looking for an unusual restoration project!



# THE PROFESSIONAL CAR SOCIETY

*"Dedicated to the restoration and preservation of vintage ambulances, funeral cars & livery vehicles"*

## NORTHEAST CHAPTER

[www.geocities.com/MotorCity/Garage/1074](http://www.geocities.com/MotorCity/Garage/1074)

### CHAPTER PRESIDENT:

Leo M. Maren III  
369 Chestnut Street  
Stirling, NJ 07980  
  
(908) 647-3738  
[caddy@bellatlantic.net](mailto:caddy@bellatlantic.net)

### SECRETARY:

Mary M. Hookway  
201 Glenside Trail  
Sparta, NJ 07871  
  
(973) 729-8083  
[hookmmh@ptd.net](mailto:hookmmh@ptd.net)

### VICE-PRESIDENT & ACTIVITIES DIRECTOR:

Bill Marcy  
349 Lookout Avenue  
Hackensack, NJ 07601  
  
(201) 342-4871

### CHAPTER TREASURER & MEMBERSHIP DIRECTOR:

Jeff Hookway  
201 Glenside Trail  
Sparta, NJ 07871  
  
(973) 729-8083  
[hookjch@ptd.net](mailto:hookjch@ptd.net)

### CRITERION EDITOR & NATIONAL PCS PUBLICITY:

Gregg D. Merksamer  
29 Old Oak Road  
Warwick, NY 10990  
  
(845) 986-6857  
[merks62@warwick.net](mailto:merks62@warwick.net)

### CRITERION PUBLISHER:

Ted Collins  
159 George Avenue  
Wilkes-Barre, PA 18705  
  
(570) 829-1455  
[collinsfh@aol.com](mailto:collinsfh@aol.com)

Serving Professional Car Society members in NJ, NY and PA, the Northeast Chapter of the PCS operates under a charter granted by the Society's Board of Directors on August 19th, 1986. Subscription to this publication is by membership in the Chapter through the Membership Director listed above. **Membership in the national organization of the PCS is a prerequisite to membership in any of its regional chapters.** Details on joining can be obtained from Natl. Membership Secretary David Petke at (423) 288-3454, writing him at 5405 Heritage Lane, Kingsport, TN 37664 or by accessing the official PCS home page at <http://www.professionalcar.org>.

THE PROFESSIONAL CAR SOCIETY  
Northeast Chapter  
159 George Avenue  
Wilkes-Barre, Pennsylvania 18705



ALWAYS USE  
ZIP CODE

FIRST CLASS MAIL

Jeff & Mary Hookway  
201 Glenside Trail  
Sparta, NJ 07871

07871-1243 11



# The Criterion

NEWSLETTER of the NORTHEAST  
CHAPTER  
of the PROFESSIONAL CAR SOCIETY



**HAIL TO THE CHIEF'S NEW CAR:** Pages 64-7 of the June, 2001 issue of *Popular Mechanics* contains an article by Your Editor, dissecting the new Cadillac limousine delivered to the White House in time for George W. Bush's Inaugural. Offering far more protection than any previous Presidential limousine - the multi-layered transparent armor windows are at least five inches thick - it is highly likely that the headlights and the taillights are the only stock components. Given that the entire vehicle weighs, I would estimate, between 12,000 to 14,000 pounds, I speculated it employs a heavy-duty, custom-fabricated rear-wheel drive or even all-wheel drive chassis in place of the stock DeVille's front-drive transaxle and transverse-mounted Northstar V-8. - *Cadillac Motor Division, General Motors Corporation*