

A close-up photograph of a woman's face, focusing on her mouth and nose. She has long, dark brown hair. Her lips are painted with a vibrant red lipstick. Her right index finger is pressed against her lips in a universal gesture for silence or secrecy. The lighting is soft and focused on her face, with the background being dark and out of focus.

W H O L E S A L E

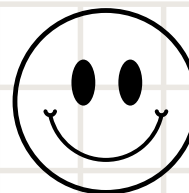
Siluet®

C O L O M B I A N S H A P E W E A R



WAIST CINCHERS

LET'S
GO!



LET'S
GO!

Reduce 3 inches in 3 minutes



Siluet: Experts in Waist Shaping Since 1982

Our Waist Cinchers Collection blends decades of expertise with innovative materials for exceptional shaping, comfort, and support. Each piece is crafted for durability and a flexible fit, offering a perfect solution for all-day wear and a variety of styles.

Key Features	Effective waist shaping Posture support Adjustable fit Breathable, durable materials
-------------------------	---



F20N

**High-Compression Beige
Latex Waist Cincher**

COLORS



Sizes:

8/S, 10/M, 12/L,
14/XL, 16/2XL

Description

This waist cincher combines high-compression latex with a soft cotton lining for comfort. Featuring flexible boning for added structure and three rows of adjustable hooks, it provides a smooth, sculpted silhouette ideal for all-day wear.

**Outer latex layer
lined with cotton**



F 21

**High-Compression Black
Latex Waist Cincher**

COLORS



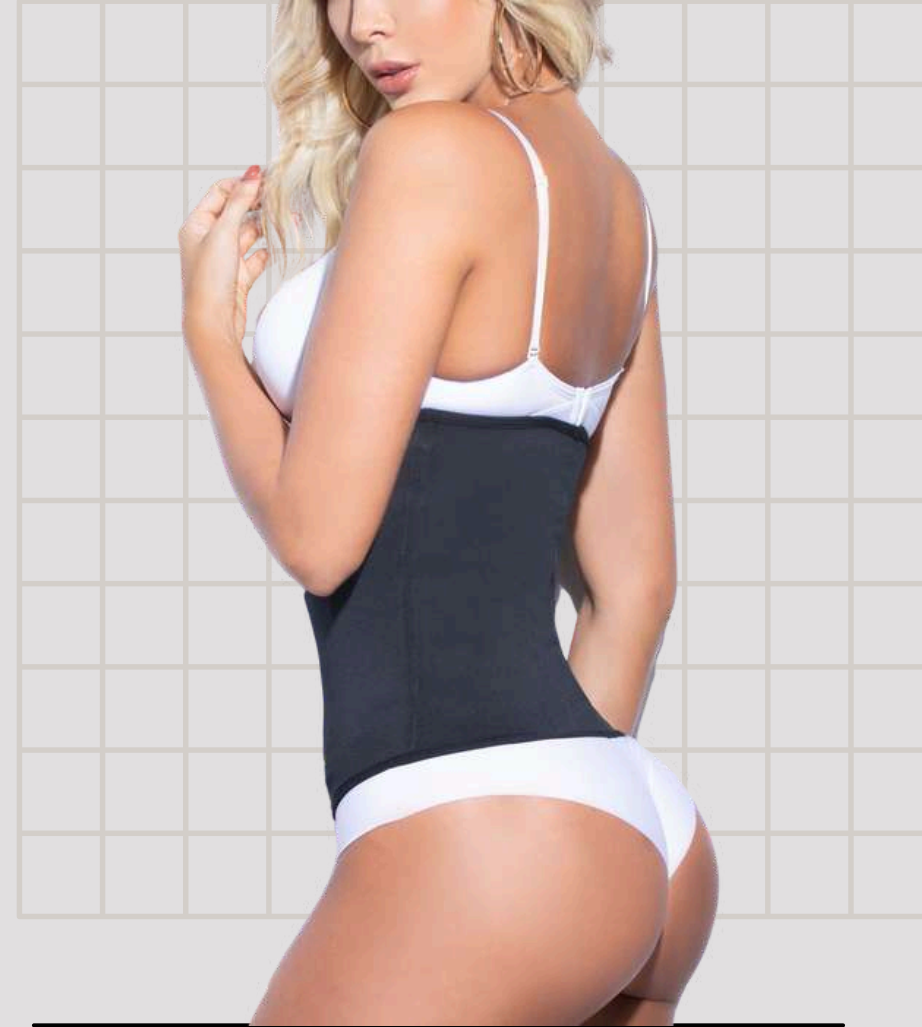
Sizes:

8/S, 10/M, 12/L,
14/XL, 16/2XL

Description

This waist cincher combines high-compression latex with a soft cotton lining for comfort. Featuring flexible boning for added structure and three rows of adjustable hooks, it provides a smooth, sculpted silhouette ideal for all-day wear.

**Outer latex layer
lined with cotton**



6067

**Latex Waist Cincher with Lycra
Outer and Cotton Inner Lining**

COLORS



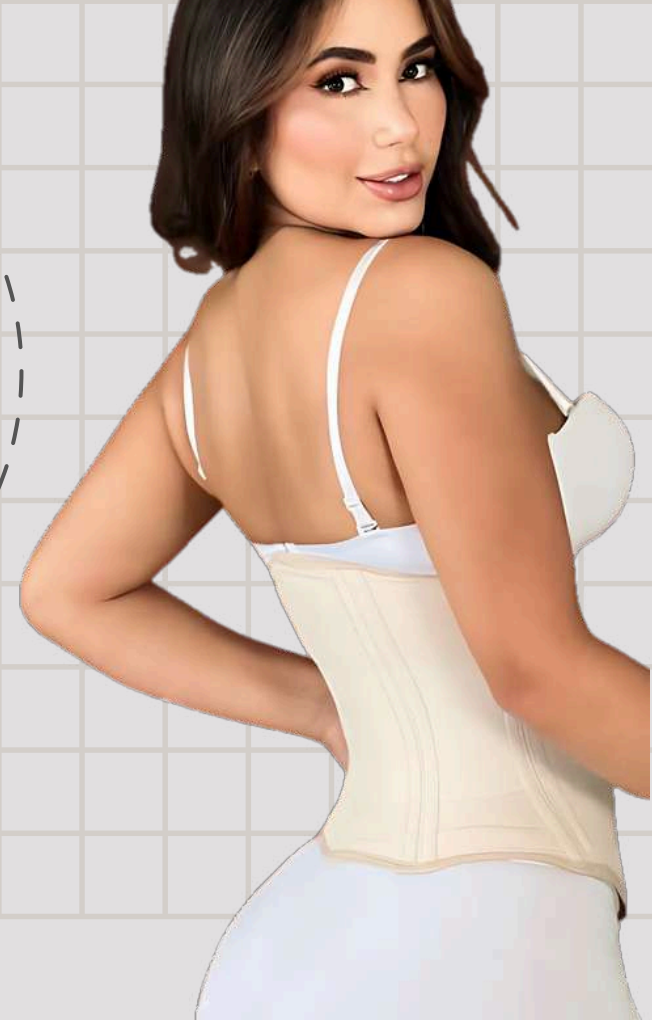
Sizes:

8/S, 10/M, 12/L,
14/XL, 16/2XL

Description

High-compression waist cincher with a Lycra exterior for durability and a soft cotton lining for comfort. Made from 100% natural latex, with flexible boning to prevent rolling and three adjustable front hooks for a customized fit.

**Latex shaper covered with Lycra
on the outside and an inner lining**



SFLZ3AL

Perfect Silhouette -
Women's Waist Trainer

COLORS



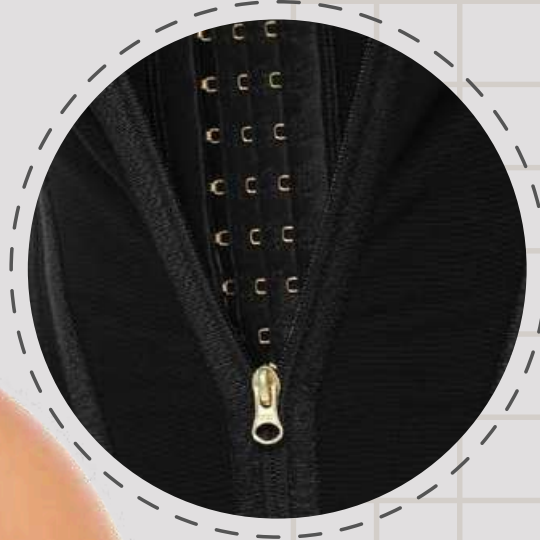
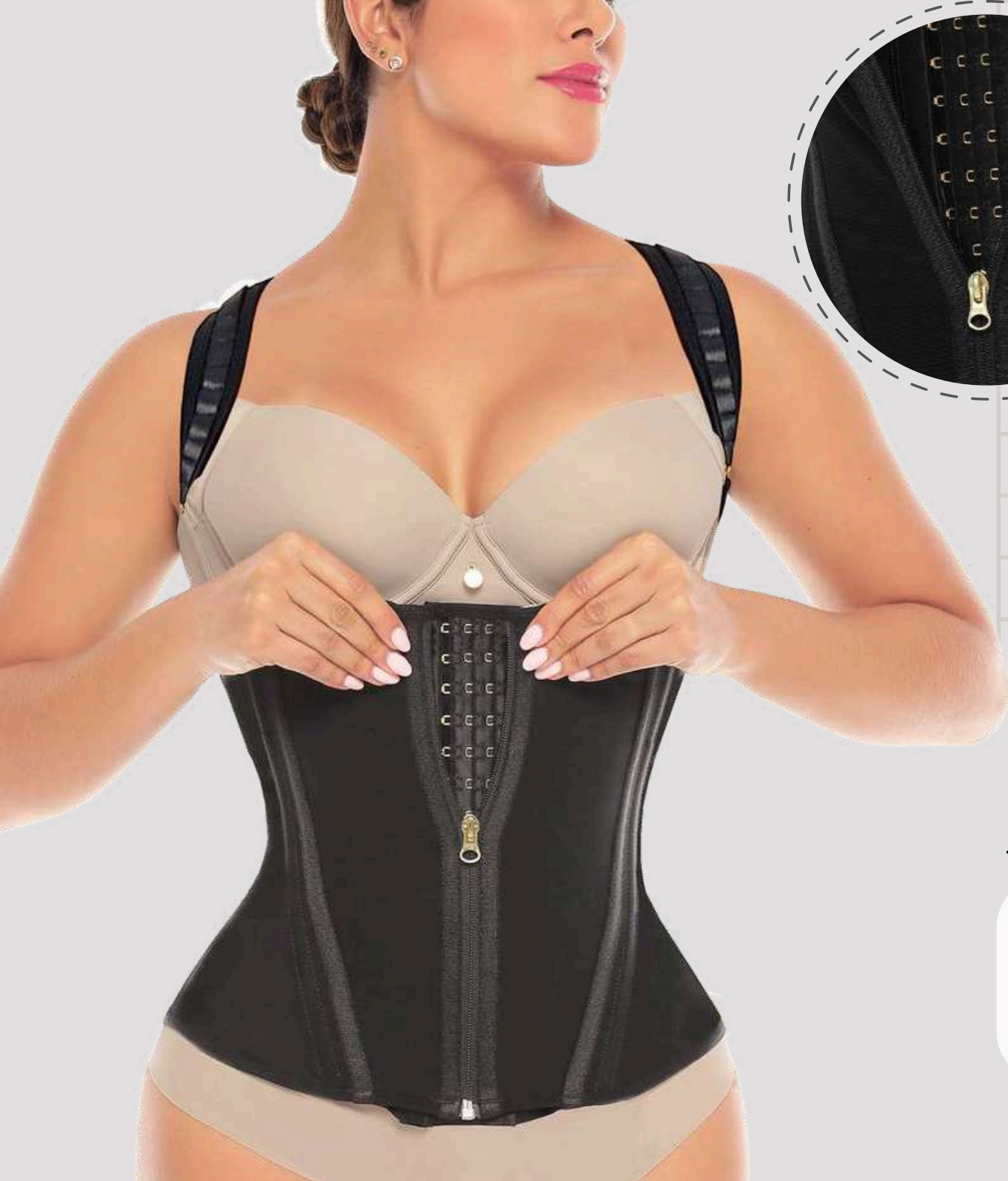
Sizes:

S, M, L, XL

Description

Double compression waist trainer for enhanced abdominal control and waist shaping. Made from breathable, high-quality materials for all-day comfort. Ideal for gym, yoga, or daily wear, providing a streamlined silhouette and boosting confidence.

**Two-in-one for greater impact:
double Powernet waistband**



SFLZ3CH

**Ultimate Shaping
Corset Vest**

COLORS



Sizes:

S, M, L, XL, 2XL,
3XL

Description

High-compression vest offering firm control for waist and abdomen with three rows of internal hooks, front zipper, and 9 ultra-flexible boning rods. Features a high back and adjustable wide straps for all-day support. Crafted in durable Powernet.

**Two-in-one for greater impact:
double Powernet waistband**



Butt-Lifting Shorts Collection

Expertly crafted for optimal lift and shaping, our Butt-Lifting Shorts Collection combines comfort with figure-enhancing design. Engineered for a flattering fit, these shorts offer consistent quality, durability, and style versatility—ideal for meeting the demands of diverse customers.

**Key
Features**

Instant lift | Sculpting fit |
Breathable | All-day comfort | Durable



1429

Butt-Lifter Shapewear Shorts

COLORS



Sizes:

S, M, L, XL

Description

High-waisted shorts with a front latex panel for enhanced abdomen control, offering firm shaping for waist, abdomen, and thighs with a natural butt-lifting effect. Invisible gaps ensure a smooth, stay-in-place fit under any outfit.

Made of Powernet with a front latex layer for enhanced support



Silicone Lace
Encaje
Siliconado



70014JCT

**Butt-Lifting
Panty Shaper**

COLORS



Sizes:

S, M, L, XL, 2XL,
3XL

Description

Ultra butt-lifting panty shaper made from Powernet, offering lower abdomen control with silicone-coated elastic and glute-enhancing bands for a seamless fit.

Made of Powernet



Silicone Lace
Encaje
Siliconado



70014JS

**Butt-Lifting
Panty Shaper**

COLORS



Sizes:

S, M, L, XL, 2XL,
3XL

Description

Ultra butt-lifting panty shaper made from Powernet, offering lower abdomen control with silicone-coated elastic and glute-enhancing bands for a seamless fit.

Made of Powernet



Pre-molded design
*Diseño
con prehormado*



SF70015PH |

Butt-Lifting
Panty Shaper

COLORS



Sizes:

S, M, L, XL, 2XL,
3XL

Description

Ultra butt-lifting panty shaper made from Powernet, offering lower abdomen control with silicone-coated elastic and glute-enhancing bands for a seamless fit.

Made of Powernet



SF70015SP | Siluet High Waist Tummy Control Shapewear Shorts

COLORS



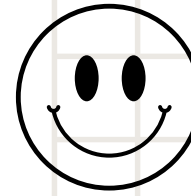
Sizes:

S, M, L, XL, 2XL, 3XL

Description

High-waisted tummy control shorts with adjustable three-level hook closures for a customized fit. Features a butt-lifter design, anti-slip silicone lace trim, and a convenient crotch zipper. Made from breathable fabrics for all-day comfort.

Made of Powernet



Shapewear Collection

Our premier shapewear collection features high-compression garments available in a variety of styles, designed to meet diverse needs. From post-surgical and postpartum support to everyday wear for a sleek look, these shapewear pieces provide firm control and a smooth silhouette. Crafted with high-quality, durable materials, each piece is tailored to offer effective support, enhance comfort, and boost confidence. Whether for recovery or aesthetic purposes, our shapewear ensures a secure fit and reliable results.

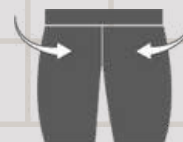
Key Features	High Compression	Versatile	Post-Surgical
	Postpartum	Everyday Use	Comfortable



Ultra-Invisible



ZIPPER
CLOSURE



Tummy
Control



Internal Push
Up Effect



SF70010AL | Invisible Strapless Mid-Thigh Shaper with Front Zipper

COLORS



Sizes:

S, M, L, XL, 2XL,
3XL

Description

Achieve a flawless silhouette with this strapless, three-layer shaper, featuring an inner comfort lining, powernet for back support, and invisible Lycra exterior. Includes a front zipper with internal hooks, silicone lace to prevent rolling, and discreet glute enhancement for a seamless look.

Made of Powernet



SF70012

Invisible Strapless Shaping Mid-Thigh Body Shaper

COLORS



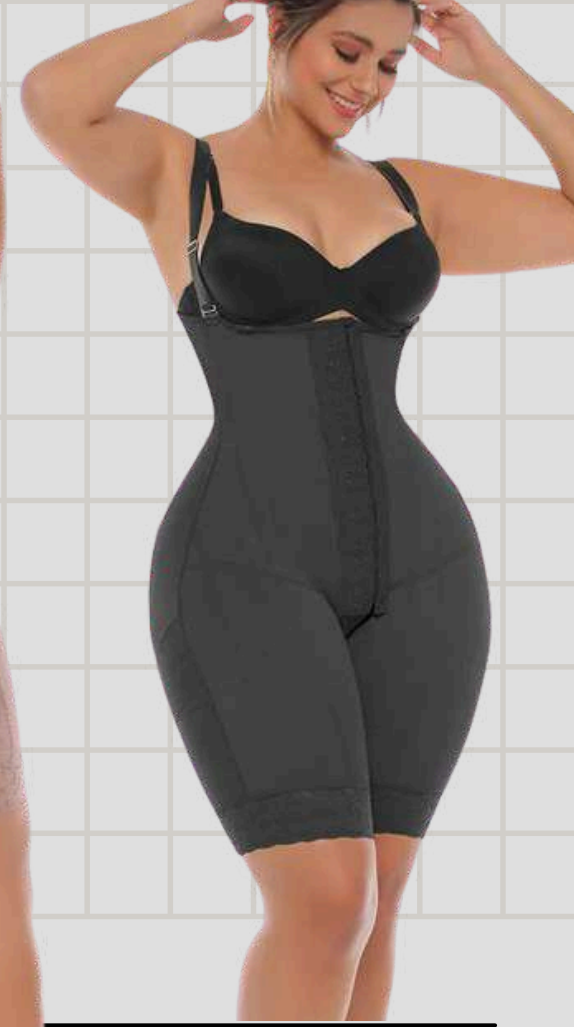
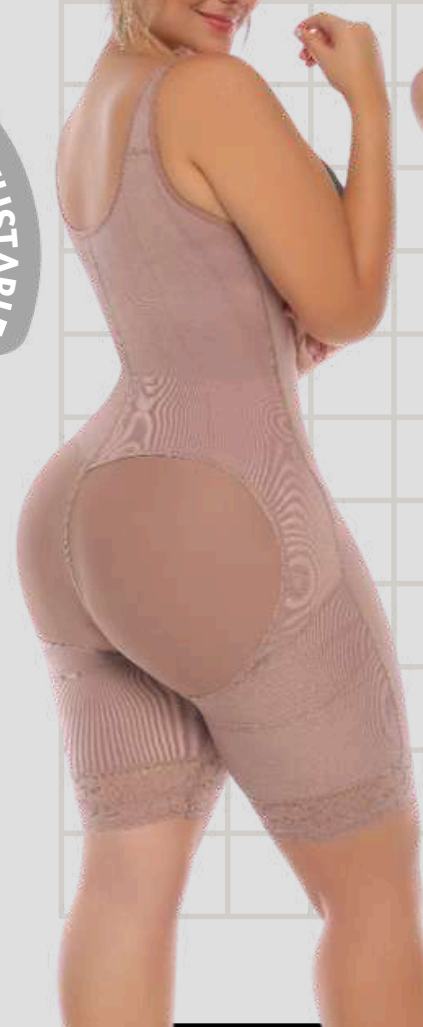
Sizes:

S, M, L, XL, 2XL,
3XL

Description

Three-layer design with inner lining for comfort, powernet for support, and an invisible Lycra exterior. Features a front zipper with internal hooks for easy wear, silicone lace to prevent rolling, and discreet glute enhancement for a flawless look under clothing.

Made of Powernet



70182TJ

**Long Medium-
Compression Shaper**

COLORS



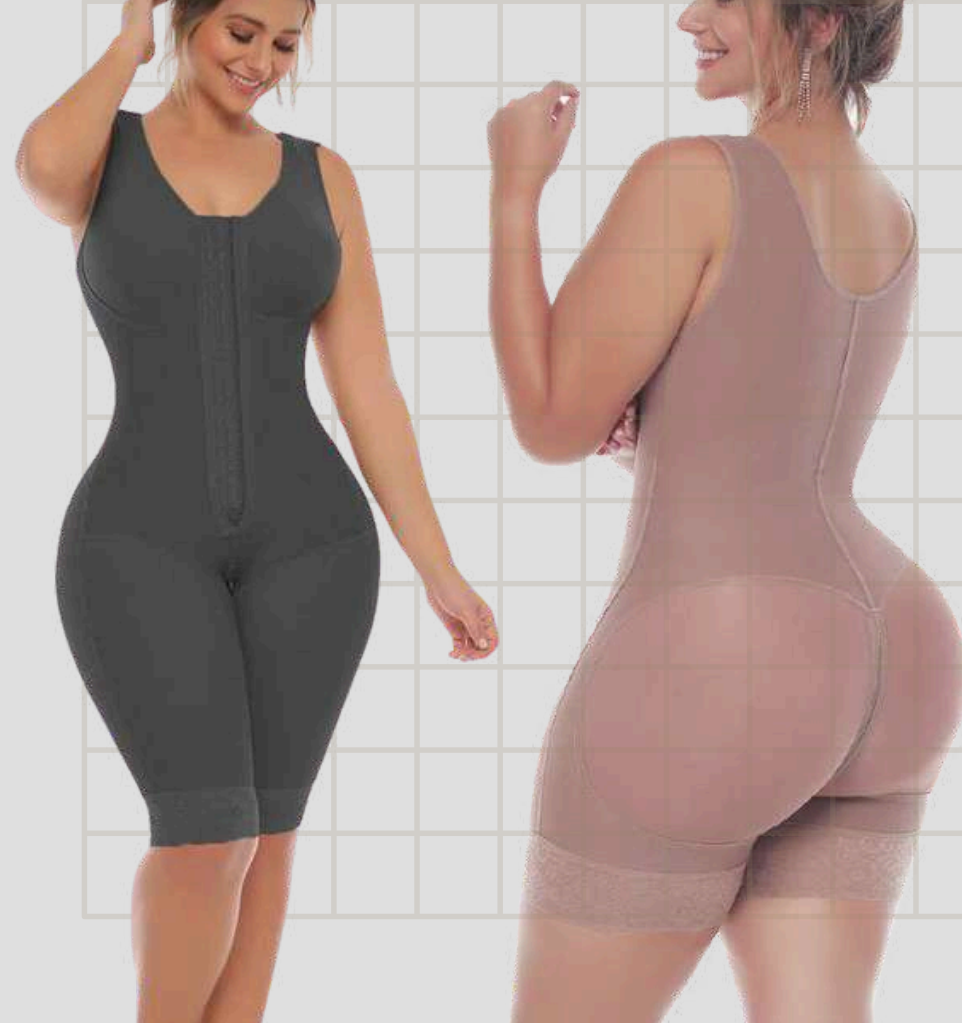
Sizes:

S, M, L, XL, 2XL,
3XL

Description

Invisible long shaper for daily wear with medium compression in comfortable, breathable Powerflex fabric. Features adjustable straps, 3 rows of front hooks, medium/high waist and abdomen control, and a flap-style perineal opening.

Made of Nylon



SF70504 | Full-Body Shaper with Bra and Long Length

COLORS



Sizes:

S, M, L, XL, 2XL,
3XL

Description

Full-body shaper for daily wear and post-surgery with bust support and butt-lifting effect. Features comfortable adjustable straps, 3 front hook rows, high compression for waist and abdomen control, and a perineal zipper opening.

Made of Powernet



SF70504MN

**Full-Body Shaper with
Total Control**

COLORS



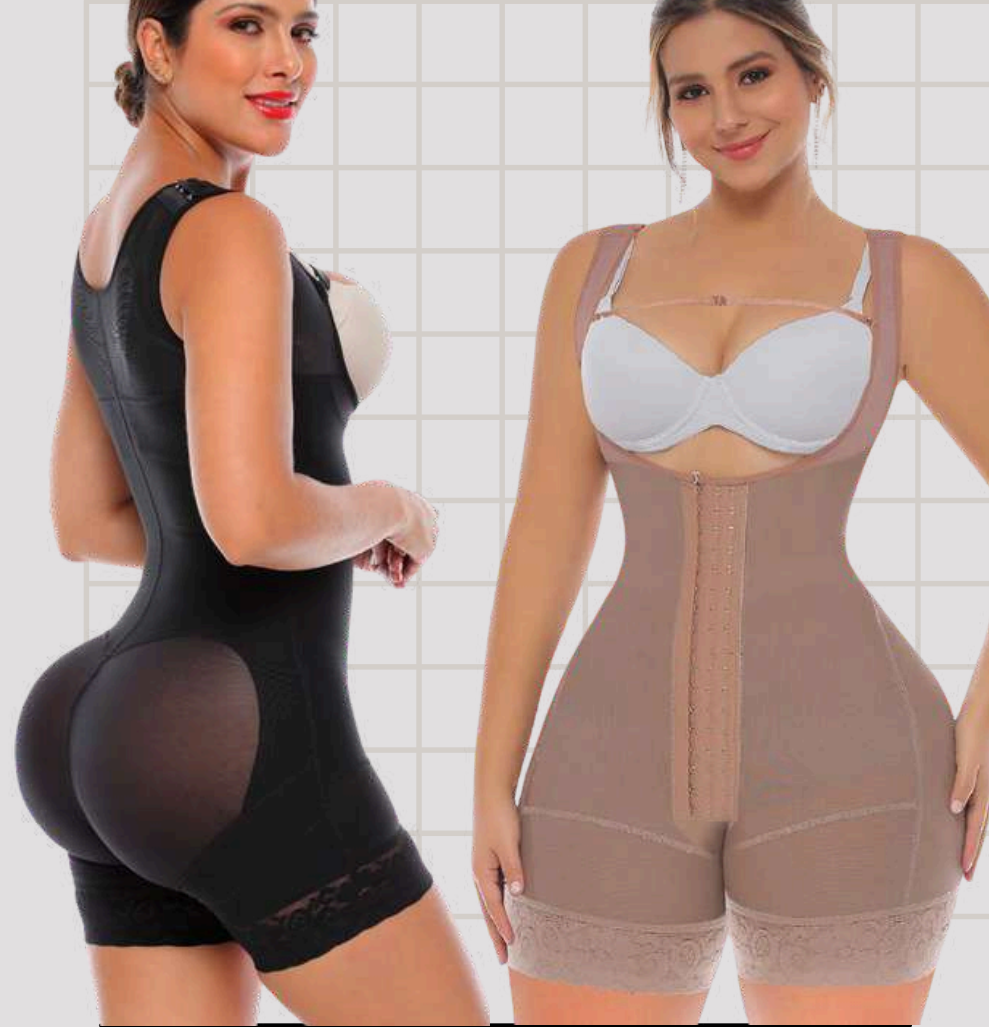
Sizes:

S, M, L, XL, 2XL,
3XL

Description

Full-coverage shaper for daily wear and post-surgery, providing total control for abdomen, waist, back, arms, and thighs, with bust support and butt-lifting effect. Features high-compression latex abdominal panel, 3 front hook rows, and a perineal zipper opening.

Made of Powernet



SF9016AL

**Shaping Body Suit
with Hooks**

COLORS



Sizes:

S, M, L, XL, 2XL,
3XL

Description

High-compression body shaper for waist, abdomen, and back, with push-up bands for butt enhancement. Features adjustable wide straps, three hook rows, perineal opening, and front adjustable strap. Made in Powernet for firm, lasting support.

Made of Powernet



SF1026

**Total Body Sculpting
Bodysuit**

COLORS



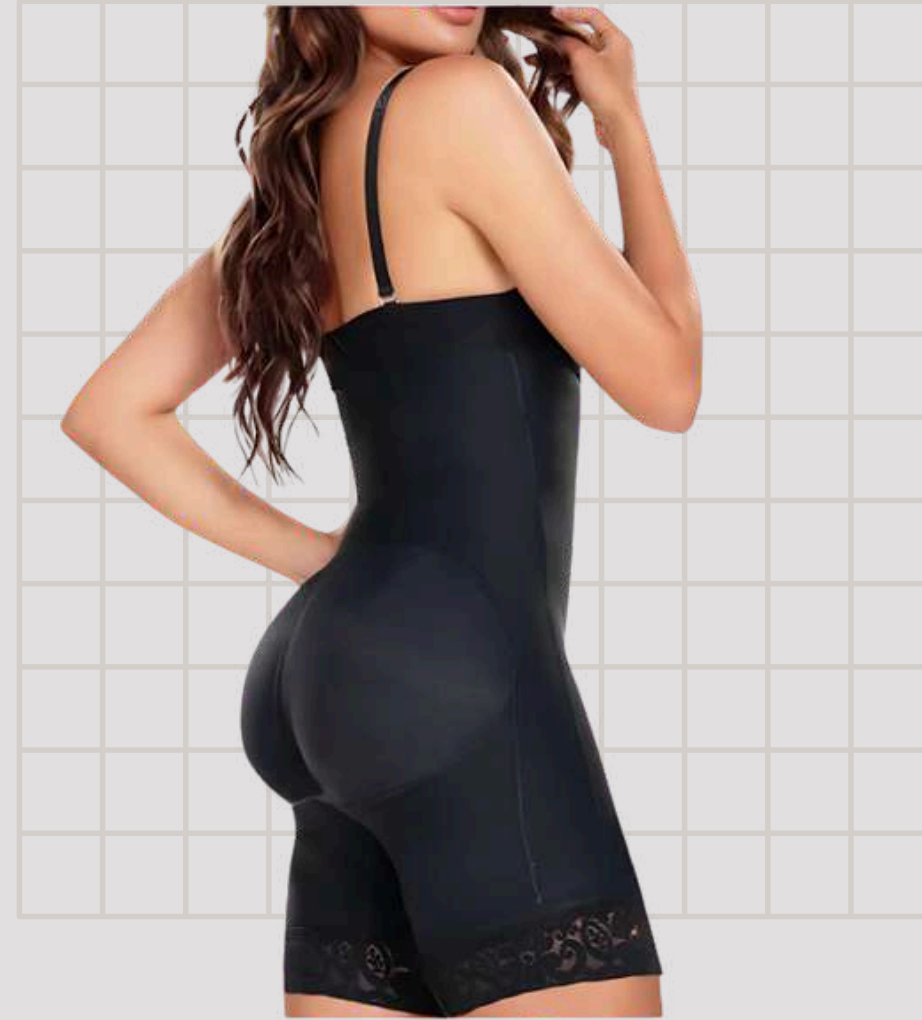
Sizes:

S, M, L, XL, 2XL

Description

Braless bodysuit with PowerNet for firm control on waist, abdomen, hips, and legs. Features derriere enhancement, adjustable straps, cooling Lycra lining, and secure front and crotch zippers for all-day comfort and versatility.

Made of Powernet



SF1027

**Braless Mid-Thigh
Minimizer Bodysuit**

COLORS



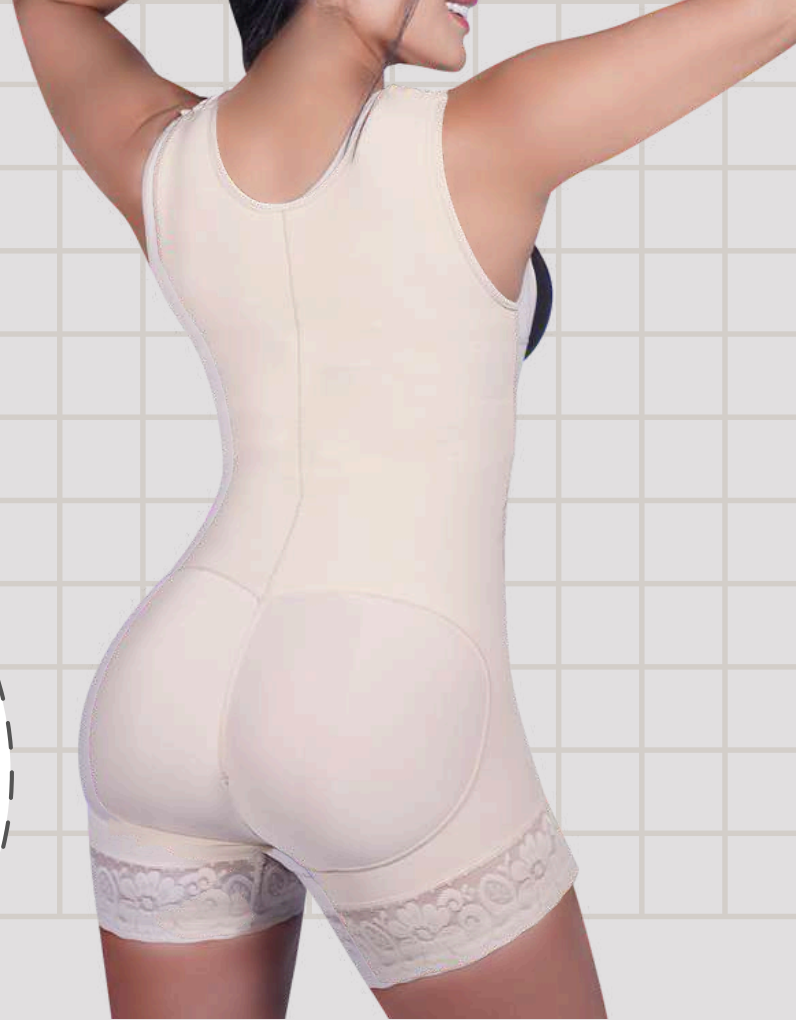
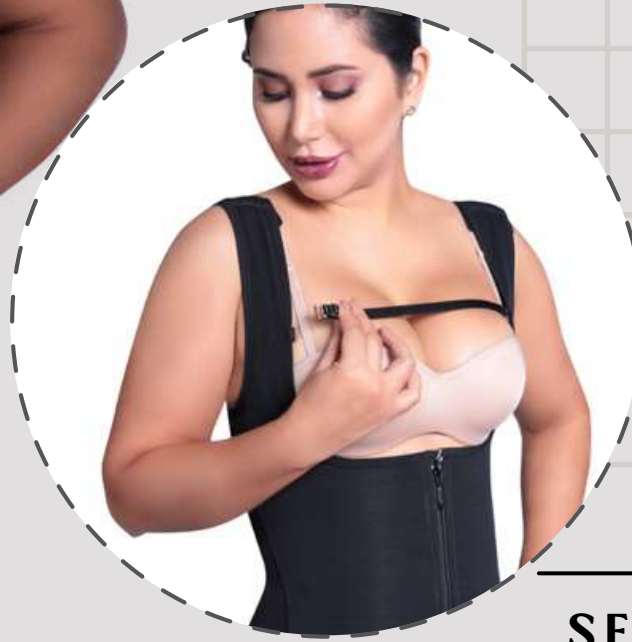
Sizes:

S, M, L, XL, 2XL

Description

Mid-thigh PowerNet bodysuit with straight back, adjustable straps, and cool-stretch lining. Offers firm control for waist, abdomen, hips, and legs, with derriere enhancement and flat front zipper. Silicone lace prevents marks.

Made of Powernet



SF1028 | Bodysuit Slimming Shaper with Latex

COLORS



Sizes:

S, M, L, XL, 2XL

Description

Full-body shaper with latex for strong tummy control. Shapes waist, abdomen, legs, and hips. Features wide straps, flat front zipper, and soft lace to prevent marks. Ideal for daily wear and post-op use.

Made of Powernet with a front latex layer for enhanced support



SF7064 | Strapless Body Shaper with Side Zipper

COLORS



Sizes:

S, M, L, XL, 2XL, 3XL

Description

Strapless shaper for daily wear and post-surgery use, with adjustable strap, side zipper with internal hooks, and butt-lifting bands. Provides high compression for waist and abdomen, with perineal zipper and silicone lace trim to prevent marks. Made from Powernet.

Made of Powernet



SF7052

**Body Shaper with Side
Zipper**

COLORS



Sizes:

S, M, L, XL, 2XL,
3XL

Description

Butt-lifting shaper for daily and post-surgery use with side zipper, adjustable strap, and high compression for waist, abdomen, and back. Includes perineal zipper and silicone lace trim to prevent marks. Made from Powernet.

Made of Powernet



ZIPPER ON CROTCH - CREMALLERA PERINEAL



SF7063

Bodysuit
Slimming Shaper

COLORS



Sizes:

S, M, L, XL, 2XL,
3XL

Description

Full-body shaper designed for firm control of waist, abdomen, legs, and hips. Features wide straps, flat front zipper, and soft lace along the legs to prevent marks. Ideal for daily wear and post-op use.

Made of Powernet



SF70071

**Thong Shaper
in Powernet**

COLORS



Sizes:

S, M, L, XL, 2XL,
3XL

Description

Thong-style shaper with high waist and abdomen control, featuring an adjustable strap, front zipper, and perineal opening with hook closures. Crafted in Powernet for firm shaping and comfort.

Made of Powernet



SF1413

**Panty style Shaper
in Powernet**

COLORS



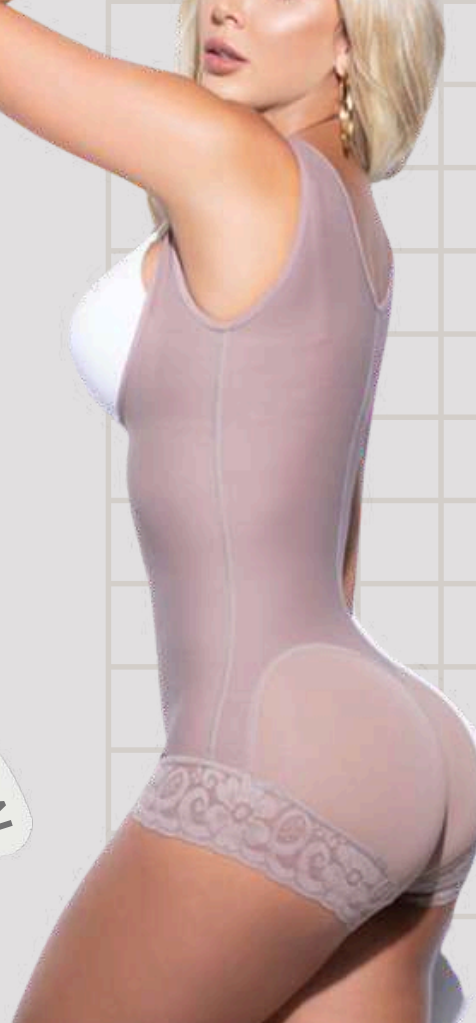
Sizes:

S, M, L, XL, 2XL,
3XL

Description

Panty-style shaper with high waist and abdomen control, featuring an adjustable strap, front zipper, and perineal opening with hook closures. Crafted in Powernet for firm shaping and comfort.

Made of Powernet



SF7063-5

**Short-Length Shaper
with Hooks**

COLORS



Sizes:

S, M, L, XL, 2XL,
3XL

Description

Everyday and post-surgical shaper with firm control for waist, abdomen, and back. Includes adjustable wide strap, three front hook rows, perineal opening with hooks, and silicone lace trim. Crafted in Powernet for durable support.

Made of Powernet



SF6019

**Body Shaper with Bra and
Panty Style**

COLORS



Sizes:

S, M, L, XL, 2XL,
3XL

Description

Shaper with built-in posture correction and wasp waist effect. Includes bra, 3 front hook rows, high waist and abdomen compression, and perineal hook opening.

Made of Powernet



SFFB851

**Invisible
Bodysuit**

COLORS



Sizes:

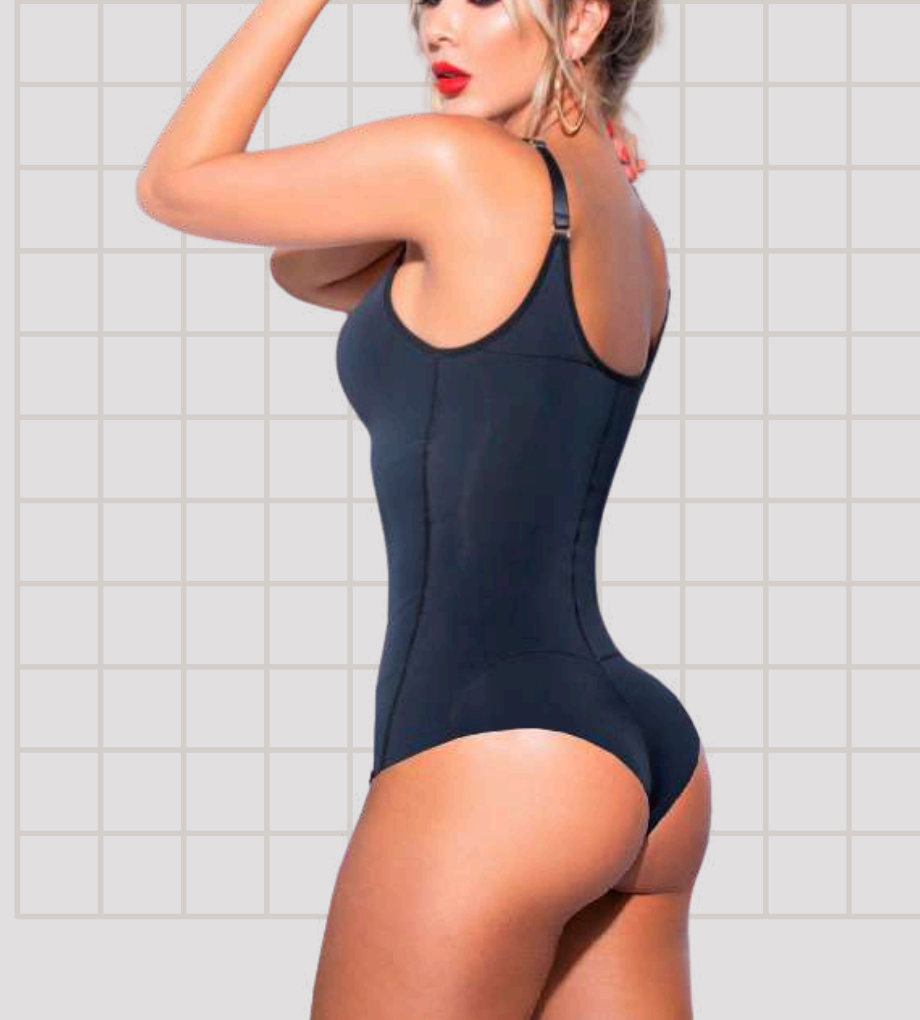
S, M, L, XL, 2XL,
3XL

Description

Shaping shapewear in cold lycra

Tummy control with double
reinforcement

Made of Lycra



SF70155H

**Invisible
Bodysuit**

COLORS



Sizes:

S, M, L, XL, 2XL,
3XL

Description

Shaping shapewear in cold lycra with
pre-shaped bust
Open crotch with hooks
Thong-style panty
Tummy control with double
reinforcement

Made of Lycra



THE HIGHEST QUALITY **COLOMBIAN SHAPEWEAR**



Door-to-Door
International Shipments



White Label
Production

Original Colombian Garments

www.liaintl.com

5930 NW 99 Avenue B7. Doral, FL 33178

+1 (305) 597 9898