

# SILENT TYPE (SRAU)



## Features:

The high configuration silent genset (SRAU) meets Australian safety standards. Special sheet metal surface technology, 3-5 years of outdoor powder coating warranty, optional galvanized sheet, 12/24 hours double layer fuel tank which is 110% leakage capacity and it is suitable for the harsh environment such as rental and mining.

### *Some details:*

- Three-way valve, Vent cap.
- Stainless steel hinges and door locks
- Silent canopy interior uses rock wool and micro-perforated aluminum panels
- High-strength drag hole structure, High-strength hanging beam structure, Large size forklift beam structure
- High-strength chassis, Chassis collision avoidance structure.
- External refueling port, Built-in fuel gauge
- Full exhaust system thermal protection
- High-performance heat sink, It can meet the running requirements when the ambient temperature is 40°C.
- Secondary muffler, Reduce the noise level when the unit is running
- Mechanical safety protection, Electrical compliance with Australian standard design

**Engine:** PERKINS / CUMMINS / VOLVO / KUBOTA / FPT



Generating Sets

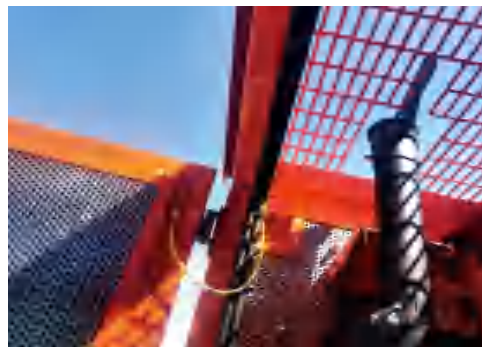


Standard  
Soundproof  
Genset



Diesel

**50  
Hz**





PT Jomon Persada Nusantara | [sales@jomonindonesia.com](mailto:sales@jomonindonesia.com) | [www.jomonindonesia.com](http://www.jomonindonesia.com)

 [@jomonindonesia](https://www.instagram.com/jomonindonesia)  [PT Jomon Persada Nusantara](https://www.linkedin.com/company/pt-jomon-persada-nusantara)

Scan me 

