



The Impact to proper water balance of a family of (4) using a 500 gallon spa is far greater than that same family using a 20,000 gallon swimming pool. Add the warm water and jet action and you can see how important a strong water clarifier needs to be. Clari-Spa is perfect water clarifying tablet for every spa. Clari-Spa works both as a problem solving and preventative maintenance water clarifier. Clari-Spa will prevent cloudy water by trapping even the smallest dirt particles that can pass through your filtration system. Use Clari-Spa routinely to keep your Hot Tub or Spa crystal clear.

#### HOW TO USE

- Always maintain proper Sanitizer level and keep your pH and Total Alkalinity balanced. You should be able to find the recommended balance levels in your swimming pool owner's manual.
- Always maintain and clean your Filter as instructed in your Owner's Manual.
- Remove plastic wrapper and drop (1) tablet into skimmer basket.
- Keep filter circulating for at least 12 hours at 1HP (Horse Power) or greater after dose to insure proper filtration. Keep filter circulating for a minimum (48) hours when using smaller HP pumps then follow Owner's Manual on recommended filtration cycles.

#### FREQUENCY OF USE

With average use- (1) Tablet once every 7-10 days and after periods of heavy use.



NO FOAM  
JUST  
RELAXATION!



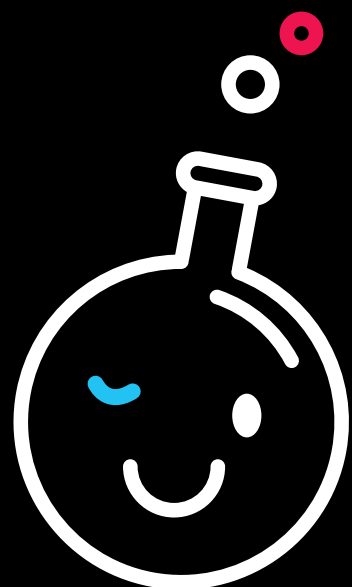
There are countless reasons why you have foaming in your spa. The primary cause is the soaps, detergents, shampoos and lotions you bring into the Hot Tub. Add jet action and you bring all that out of the water and up to the surface. Bubble Stop prevents the foam from staying on the surface and allows the foam causing impurities to be collected and trapped in the filter.

#### HOW TO USE

- Always maintain proper Sanitizer level and keep your pH and Total Alkalinity balanced. You should be able to find the recommended balance levels in your swimming pool owner's manual.
- Always maintain and clean your Filter as instructed in your Owner's Manual.
- Remove plastic wrapper and drop (1) tablet into skimmer basket.
- Keep filter circulating for at least 1 hour at 1HP (Horse Power) or greater after dose to insure proper filtration. Keep filter circulating for a minimum (8) hours when using smaller HP pumps then follow Owner's Manual on recommended filtration cycles.

#### FREQUENCY OF USE

With average use- (1) Tablet once every 7-10 days and after periods of heavy use



IMPACT WATER CARE TABLETS ARE PROUDLY MANUFACTURED IN AVIGNON, FRANCE AND AVAILABLE IN THE USA THROUGH SYSTEM 6 PERFORMANCES SALES. IMPACT PRE-MEASURED TABLETS ARE COLOR CODED AND WRAPPED INDIVIDUALLY TO PREVENT DAMAGE. WE USE BIODEGRADABLE BOXES TO ELIMINATE PLASTIC BOTTLES. WE WANT TO PROVIDE A FRIENDLY APPROACH AND POSITIVE IMPACT TO YOUR SWIMMING ENJOYMENT.

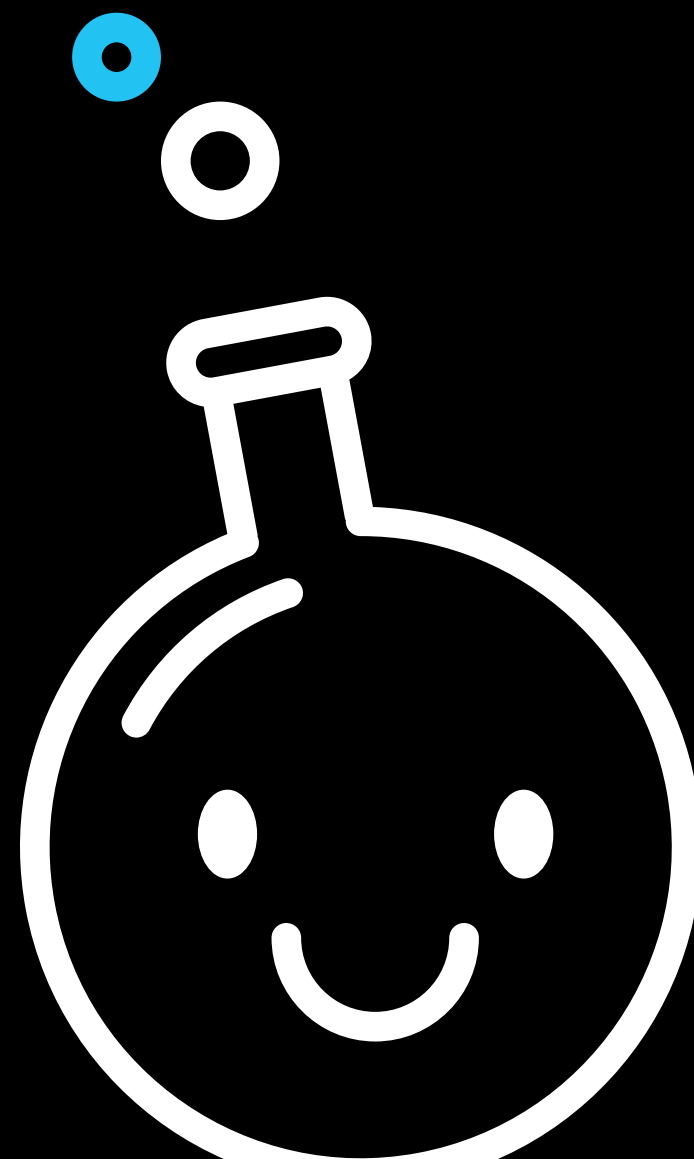
#### IMPACT

ZI COURTIME • 195 RUE PIERRE PARAF  
8400 AVIGNON • FRANCE



## WATER CARE TABLETS

FOR SWIMMING POOLS & SPAS



A FRIENDLY APPROACH  
TO MAINTAINING PROPER  
WATER CHEMISTRY  
WITH PRE-MEASURED  
COLOR CODED TABLETS

System 6  
Performance Sales

WWW.SYSTEM6SALES.COM

860-910-6114 CHARLIE@SYSTEM6SALES.COM

# FLOCKY



PERFECT  
FOR SMALL  
BACKYARD  
POOLS!

FLOCKY is a water clarifier tablet developed especially for the smaller above ground pools with cartridge filters. FLOCKY helps create a more efficient filtration system by capturing smaller particles that cause cloudy water. You will see the results within the first 24 hours. Use (1) tablet per 7000 gallons.

## HOW TO USE

Always maintain proper Sanitizer level and keep your pH and Total Alkalinity balanced. You should be able to find the recommended balance levels in your swimming pool owner's manual.

- Clean your Filter Cartridge as instructed in your Owner's Manual and re-install.
- Remove plastic wrapper and drop (1) tablet into skimmer basket or directly in filter chamber if allowable.
- Start up your filtration system as instructed in your Owner's Manual.
- Keep filter circulating for at least 24 hours after dosage to insure proper filtration cycle.
- Wait until tablet is dissolved before adding more tablets.

## FREQUENCY OF USE

Use (1) Tablet per 7000 gallons whenever you clean or replace your filter cartridge.

# ClariOne



Clari-One is your "Go-To" water clarifier tablet for every pool. Clari-One works both as a problem solving and preventative maintenance water clarifier. Clari-One works to grab and trap the smaller, microscopic dirt particles that can pass through your filtration system preventing cloudy water. Use Clari-One routinely to keep your swimming pool crystal clear.

## HOW TO USE

Always maintain proper Sanitizer level and keep your pH and Total Alkalinity balanced. You should be able to find the recommended balance levels in your swimming pool owner's manual.

- Always maintain and clean your Filter as instructed in your Owner's Manual.
- Remove plastic wrapper and drop (1) tablet into skimmer basket or in a floating dispenser.
- Wait until tablet is dissolved before adding more tablets.
- Keep filter circulating for at least 24 hours after dose to insure proper filtration, then follow Owner's Manual on recommended filtration cycles.

## FREQUENCY OF USE

Use (1) Tablet per 13,000 gallons once a week and after periods of heavy use



# EasyLineTab



NO  
WATERLINE —  
NO PROBLEM!  
LET'S HAVE  
FUN!

Phosph' Out helps to eliminate algae by removing phosphates from your swimming pool. Phosphates are typically found in fertilizers used on plants and vegetation around the pool but can also be found in municipal water. It is important to keep on top of any potential phosphate problem in season as you don't want to deal with any lingering algae in your pool.



NO FOOD  
FOR ALGAE  
AVAILABLE  
HERE!

# Phosph'OUT

## HOW TO USE

Always maintain proper Sanitizer level and keep your pH and Total Alkalinity balanced. You should be able to find the recommended balance levels in your swimming pool owner's manual. Have your pool water checked at the beginning of the season and eliminate any phosphates from your start up water.

- Always maintain and clean your Filter as instructed in your Owner's Manual. Make note of the PSI on your pressure gauge when you have a clean Filter.
- Based on your Phosphate test, determine how many pre-measured tablets you will need to reduce the phosphate level.
- (1) Tablet removes 100 ppb of Phosphates in 4,500 gallons of pool water
- (3) Tablets per 13,000 gallons to remove 100 ppb
- Remove plastic wrapper and drop (1) tablet into skimmer basket or in a floating dispenser.
- Wait until tablet is dissolved before adding more tablets.
- Keep a watch on PSI increase on filter pressure gauge and backwash when pressure increases by 10 psi.
- Keep filter circulating for at least 24 hours after dose to insure proper filtration, then follow Owner's Manual on recommended filtration cycles. Minimum 8 hours per day.

## FREQUENCY OF USE

Check Phosphates levels at beginning of season and use as described. Be aware that phosphates can return in-season if you're replacing water, using a landscaper and after weather events.

SUPER  
STRENGTH  
IN JUST ONE  
TABLET!

- Always maintain and clean your Filter as instructed in your Owner's Manual.
- Remove plastic wrapper and drop (1) tablet into skimmer basket or in a floating dispenser.
- Wait until tablet is dissolved before adding more tablets if required.
- DO NOT USE ANY "SHOCK" TREATMENT WITHIN 12 HOURS OF ADDING EASYLINE.
- Keep filter circulating for at least 24 hours after dose to insure proper filtration, then follow Owner's Manual on recommended filtration cycles.
- Please note, the more swimmers using the pool, the more oils and lotions are going to be left in the pool. It may be recommended to add EasyLine after party or heavy bather use.

## FREQUENCY OF USE

EasyLine dosage is based on the surface area of your swimming pool. Use (1) Tablet for up to a 20' X 20' pool. Add (1) Tablet per 20' X 20' pool once a week and (8) hours prior to periods of expected heavy use (Party!).

# CalcTab



WE HAVE YOUR  
POOL SURFACE  
AND EQUIPMENT  
COVERED!

Calc-Tab is a sequestering agent designed to prevent calcium and plaque deposits on the walls and bottom surface of your in-ground, plaster pool. These deposits can make the pool surface feel rough and abrasive. Calcium buildup can also effect the performance of

your filtration and other equipment or accessories your pool water makes contact with. When used regularly, Calc-Tab will help prevent the abrasive feel from build-up on the pool surface and prolong the efficiency of your equipment.

## HOW TO USE

Always maintain proper Sanitizer level and keep your pH and Total Alkalinity balanced. There is a certain amount of calcium hardness required for proper water balance. The ideal range is between 150-400 ppm. You should be able to find the recommended balance levels in your swimming pool owner's manual.

- Always maintain and clean your Filter as instructed in your Owner's Manual.
- Test Calcium Hardness level to determine if treatment is required.
- Remove plastic wrap- add 3 tablets per 13,000 gallons into skimmer basket when opening your swimming pool in the spring and 1 tablet per 13,000 gallons after backwashing filter or adding water to your pool.
- Do not shock your pool within 24 hours of adding calc tabs
- Keep filter circulating for at least 24 hours after dose to insure proper filtration, then follow Owner's Manual on recommended filtration cycles.

## FREQUENCY OF USE

Use (1) Tablet per 13,000 gallons once a week

# ironTab

Iron-Tab is a sequestering agent that goes after metals such as iron and copper that can easily be found in your swimming pool. This seems to be most especially true with Vinyl Liner pools. These metals will cause unsightly stains on the pool surface and can be difficult to remove once they appear. Iron-Tab will grab on to those metals and prevent them from causing problems.

## HOW TO USE

Always maintain proper Sanitizer level and keep your pH and Total Alkalinity balanced. You should be able to find the recommended balance levels in your swimming pool owner's manual.

- Always maintain and clean your Filter as instructed in your Owner's Manual. Do not shock your pool within 24 hours of adding iron tabs. Shocking Pool too soon may cause metals to oxidize which can turn the pool green.
- When you initially start up the pool, remove plastic wrapper and drop (3) tablets into skimmer basket or in a floating dispenser.
- Keep filter circulating for at least 24 hours after dose to insure proper filtration, then follow Owner's Manual on recommended filtration cycles.

## FREQUENCY OF USE

Use (1) Tablet per 13,000 gallons once a week.

YOU MIGHT  
LIKE METAL IN  
YOUR MUSIC BUT  
NOT IN  
YOUR POOL!

