



ASIA

SCAFFOLDING | CONSTRUCTION

BRITISH STANDARD

TUBE & FITTING BROCHURE

Our History – Our Vision – Our Mission

Founded in 2016, CMW Asia management has vast experience in the International industrial services industry. CMW Asia has gained immediate footing in the Philippine setting with its reputation as a trustworthy supplier and service provider.

Our vision is to bring in British standard of safety, expertise, and management and incorporating Philippine manpower skills in its projects.

Our Mission is to improve the profitability of our clients and their industrial assets by efficiency in the overall scaffolding management.

We use the highest of quality of materials that meet the specifications and material characteristics of our clients and their working environments, specifically:

- British and Japanese standard tube and fitting materials
 - Various system type and ringlock scaffolds

SCAFFOLDING TUBE



ASIA

SCAFFOLDING | CONSTRUCTION

USE

The scaffolding tube provides the vertical support for the scaffold & strictly conforms to BS EN standards.



Item No	Description	Weight (Kgs)
10.09	0.9M Scaffolding Tube	3.27
10.08	1.2M Scaffolding Tube	4.36
10.07	1.5M Scaffolding Tube	5.45
10.06	1.8M Scaffolding Tube	6.54
10.05	2.5M Scaffolding Tube	9.08
10.04	3.0M Scaffolding Tube	10.90
10.03	4.0M Scaffolding Tube	14.53
10.02	5.0M Scaffolding Tube	17.79
10.01	6.0M Scaffolding Tube	21.35

SINGLE COUPLER



This scaffold fitting is used to hold tubes for non load bearing purpose.

SPECIFICATION:

Size: 48.3mm

Standard: En74

Finishing: Zinc Plated

DOUBLE COUPLER



This scaffold fitting connects two scaffold tubes at right angle. It is a load bearing fitting enable to resist both slip and distortion. Precision made centers or fitting's body ensure a 90-degree connection.

SPECIFICATION:

Size: 48.3mm

Standard: BS1139/EN74

Finishing: Zinc Plated / Hot Dipped Galvanized

SWIVELCOUPLER



This scaffold fitting connects two scaffold tubes at any angle to provide a ledge brace, front or similar bracing to a scaffold structure. It is a load bearing fitting.

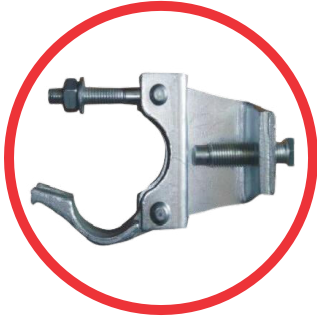
SPECIFICATION:

Size: 48.3mm

Standard: BS1139/EN74

Finishing: Zinc Plated / Hot Dipped Galvanized

BEAM CLAMP



This fitting provides a rotating coupling of a scaffold tube to an “I” beam girder and must be used in pairs with one on each opposite flanges.

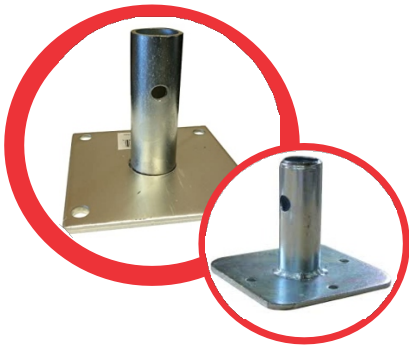
SPECIFICATION:

Size: 48.3mm

Standard: Bs1139 / Bs1139 - 2.2 / AS1576.2-91

Finishing: Zinc Plated / Hot Dipped Galvanized.

BASE PLATE



Base plates are used to distribute the load of scaffolding structure. Inserted at the base of standard.

SPECIFICATION:

Plate Size: 150mm x 150mm

Plate Thickness: 5mm/6mm

Rod Size: 12mm (Dia) x 100mm (Height)

Standard: BS1139/EN74

Finishing: Hot Dipped Galvanized

BOARD RETAINING COUPLER



Boards are quickly locked in right position, providing height resistance to both lateral and upward movement. The fitting should be used on scaffolds exposed positions where uplift maybe expected on board platforms.

SPECIFICATION:

Size: 48.3mm

Standard: BS1139/EN74

Finishing: Zinc Plated / Hot Dipped Galvanized

SLEEVE COUPLER



This scaffold fitting connects two scaffold tubes externally. A centre steel divider ensures an equal insertion of each tube. Fitting can be used where tension joints are required particularly useful for long bracing tubes.

SPECIFICATION:

Size: 48.3mm

Standard: BS1139/EN74

Finishing: Zinc Plated / Hot Dipped Galvanized

JOINTPIN COUPLER



This fitting is for vertical handrail application. Operates by being inserted internally and expand to apply grip to internal walls of tubes.

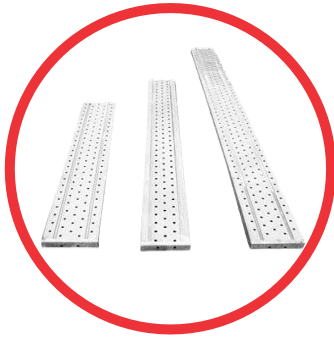
SPECIFICATION:

Size: 48.3mm

Standard: BS1139/EN74

Finishing: Zinc Plated / Hot Dipped Galvanized

METAL BOARDS



Scaffold Metal Board is now used as a replacement of timber boards as temporary access platform. It boasts high load carrying capacity and triples the life span from a timber boards for a competitive price.

SPECIFICATION:

Available sizes:

Height : 38mm & 45mm
Width : 210mm & 225mm
Length : 1.0m to 4.0m (without hook type)

Thickness : 1.2mm/1.5mm/1.8mm/2.0mm
Standard : BS1139/EN74
Finishing : Hot Dipped Galvanized

METAL BOARD WITH HOOK



Scaffold Metal Board with hooks is now used as a replacement of timber boards as temporary access platform. It boasts high load carrying capacity and triples the life span from a timber boards for a competitive price.

SPECIFICATION:

Available sizes:

Height : 38mm & 45mm
Width : 210mm & 225mm
Length : 0.73m to 4m (with hook type)

Thickness : 1.2mm/1.5mm/1.8mm/2.0mm
Standard : BS1139/EN74
Finishing : Hot Dipped Galvanized

ADJUSTABLE BASE JACK



Adjustable Base Jack is used to distribute the load of scaffolding structure. Inserted at the base of standard placed at forged jack nut.

SPECIFICATION:

Height: 600mm – 760mm

Plate Size: 150mm x 150mm

Thickness: 5mm/6mm

Standard: BS1139/EN74

Finishing: Hot Dipped Galvanized

CASTORWHEELS



Castor Wheel can be used with 48.3mm outside diameter scaffold tube and with various system scaffolds. Wheels can be firmly secured to the tube to prevent displacement.

SPECIFICATION:

Size: 6" & 12"

Wheel type: Rubber/Steel Wheel with Leg

Brake Available: Male Type

Capacity: Light/Heavy Duty



We support our "clients" success by bringing British standard of safety, expertise, and incorporating Philippine manpower skills in their projects.

Head Office:

CMW ASIA Scaffolding & Construction
0132 Ambulong Proper St, Tabangao,
Batangas City 4200
(043) 402 3154 (+63) 917 501 9918



SCAFFOLDING | CONSTRUCTION