

## HATTIE PALMER STATON SENIOR CENTER PRESENTS

### Pigeon Forge and Smoky Mountains Show Trip



#### INCREDIBLE PRICE INCLUDES:

- ♦ Motorcoach transportation
- ♦ 4 nights lodging in the Smokies
- ♦ 8 meals: 4 breakfasts and 4 dinners
- ♦ Morning Show: PATTY WASZAK SHOW
- ♦ Three Evening Shows: COUNTRY TONITE, PAULA DEEN'S LUMBERJACK FEUD SHOW & "ARRAY"
- ♦ GUIDED TOUR OF THE GREAT SMOKY MOUNTAINS NATIONAL PARK
- ♦ Free time in HISTORIC DOWNTOWN GATLINBURG
- ♦ Admission to DOLLYWOOD

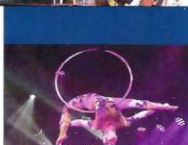
and much more

# \$845\*

5 Days 4 Nights

\*PER PERSON, DOUBLE OCCUPANCY

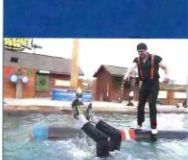
(Mon - Fri)  
Jun 8 - 12  
2026



"ARRAY" - Pigeon Forge's  
Newest Variety Show



COUNTRY TONITE



PAULA DEEN'S  
LUMBERJACK FEUD SHOW



DOLLYWOOD

Departure: Hattie Palmer Staton Senior Center,  
1403 Church St, Scotland Neck, NC @ 8 am

Day 1: Depart your group's location in a spacious, restroom and video equipped motorcoach and set off for the breathtaking Smoky Mountains! This evening, you'll enjoy Dinner and check into your Smoky Mountain area hotel for a four night stay.

Day 2: Enjoy a Continental Breakfast before starting your morning at the PATTY WASZAK SHOW, as this talented entertainer wows you by playing an array of multiple instruments and fun-filled tunes. Later, you'll have time on your own for some shopping. After enjoying Dinner, take in Pigeon Forge's newest variety show, "Array Variety Show." Featuring some of the area's most talented and world-class singers, musicians and incredible dancers performing songs from all genres of music spanning several decades. Hilarious comedy will have you laughing till your sides hurt. Unbelievable specialty and variety acts will keep you amazed and entertained throughout the entire performance.

Day 3: Start your day with a Continental Breakfast, before departing for a visit to DOLLYWOOD. Enjoy the Southern charm of this unique theme park. This evening, after Dinner, enjoy COUNTRY TONITE, a fast-paced production with a variety of dynamic singing and dancing, side-splitting comedy, powerful gospel, and American patriotism.

Day 4: Today, you'll start your day by enjoying a Continental Breakfast before heading off on a GUIDED TOUR OF THE GREAT SMOKY MOUNTAINS NATIONAL PARK. Afterward, enjoy free time in HISTORIC DOWNTOWN GATLINBURG. After Dinner, you'll experience the PAULA DEEN'S LUMBERJACK FEUD SHOW. Upon arrival, you'll take in a VIP Backstage Tour, including a personal meet / greet with one of the Lumberjack or Jills. You will also have an opportunity to join in on a private axe throwing on stage. Next, take your seat in a state-of-the-art, climate-controlled grandstand and see the most unique show in all of the Smokies. Enjoy the high-energy events featuring lumberjacks from the feudin' Dawson and McGraw families. Tonight, you'll return to your hotel for a good night's rest.

Day 5: Today after enjoying a Continental Breakfast, you depart for home... a perfect time to chat with your friends about all the fun things you've done, the great shows you've seen, and where your next group trip will take you!

#### ADD SOME PEACE OF MIND TO YOUR TRIP...

With Diamond Tours Exclusive Travel Confident® Protection Plan.  
See separate advertisement...

\$75 Due Upon Signing. \*Price per person, based on  
double occupancy. Add \$159 for single occupancy.  
Final Payment Due: 4/1/2026

#### FOR INFORMATION & RESERVATIONS CONTACT:

Hattie Staton @ (252) 826-3891

**Diamond Tours** inc.  
Bringing Group Travel to a Higher Standard®

Form ID: 2400-SA1205

WM

Tour#: 2287557

TRAVEL  
INSURED  
INTERNATIONAL  
A TRIP & TRAVEL COMPANY

Help Put Your Mind at Ease on the Next Trip...

with the Travel Confident® Protection Plan!

Travel Protection - Same Price - Regardless of Age!

#### PLAN BENEFITS INCLUDE:

**Trip Cancellation**! You are covered for your unused, prepaid, non-refundable trip costs in the event you must cancel your trip for a covered reason, such as one of the reasons below.

**Trip Interruption**! This covers the unused portions of your land or water travel arrangements, plus the additional transportation costs paid, if you must interrupt your trip due to a covered reason, such as the following:

**Sickness, Injury or Death** to you, a traveling companion, a family member, or a business partner

**Jury Duty** or being required to appear as a witness in a legal action

**A Strike** that causes your common carrier to cease operations for at least 18 hours

**Losing Your Job** where you have worked for at least 1 year

**Terrorist Attack**

! Please note that the covered reasons for Trip Cancellation coverage are not identical to the covered reasons for Trip Interruption coverage, and additional terms apply to all covered reasons; benefits only payable if triggered by a covered peril.

Can be covered for the "single supplement" surcharge if your roommate cancels or interrupts for one of the above reasons.

#### EASY ONLINE SIGNUP

www.TravelConfident.com

Checks or money orders  
are no longer accepted.

QUESTIONS?  
CALL 1-855-376-2037

Trip Cost (per person)	Travel Confident® Cost (per person)
Up to \$500	= \$38
\$501 - \$600	= \$48
\$601 - \$700	= \$62
\$701 - \$1,100	= \$72
\$1,101 - \$1,500	= \$96
\$1,501 - \$2,000	= \$132
\$2,001 - \$2,500	= \$166
\$2,501 - \$3,000	= \$201
\$3,001 - \$3,500	= \$246

#### RECEIVE THIS WAIVER

**ACT NOW** so you are eligible for a  
**PRE-EXISTING CONDITION**

**EXCLUSION** waiver!

You must purchase the travel protection  
plan within **14 days** of the date of your initial  
payment or deposit.

Review the complete terms in the exclusion  
section of your plan document.

**Baggage and Personal Effects - Up to a maximum of \$1,000!** If your baggage is lost, stolen, damaged, or destroyed!

**Accident & Sickness Medical Expense - Up to a maximum of \$5,000!** If you are injured or become ill on the trip. You also are covered for up to \$750 in emergency dental treatment.

**Medical Evacuation and Repatriation of Remains - Up to a maximum of \$20,000!** Should an illness that is severe, acute or life threatening require immediate care and an adequate medical facility is not available in your immediate area, this covers the cost to transport you to the nearest hospital where you can receive appropriate treatment. A toll-free call to 1-800-494-9907 starts the arrangements. If you are traveling alone, the plan pays for the air fare of a companion to join you at the hospital (additional terms apply).

**24/7 Non-Insurance Assistance Services Included:** Lost Baggage Retrieval • Prescription Drug/Eyeglass Replacement • Medical or Legal Referrals • Emergency Cash Advance • Translation Services • Payment to the Assistance Company is Your Responsibility.

#### \*\* TIPS FOR TRAVELERS \*\*

- Cancel with your Group Leader as soon as you are aware of the need to cancel.
- In the event you need to file a claim, contact Travel Insured International at 1-855-376-2037 as soon as possible. Be prepared to provide proof of payments for all portions of your trip, including the travel protection plan.
- Get detailed medical statements from treating physicians where and when an accident or sickness occurred. Save your receipts, proof of all payments and proof of coverage.
- If you have purchased the Travel Confident® Protection Plan, for medical evacuation call the Non-Insurance Assistance Company at 1-800-494-9907 or collect at 1-603-328-1707. Be sure to call before you incur any expenses!

This advertisement contains highlights of the plans developed by Travel Insured International, which include travel insurance coverages underwritten by United States Fire Insurance Company, Principal Office located in Morristown, New Jersey, under form series 17000 et al, 1210 et al and TP-401 et al, and non-insurance Travel Assistance Services provided by C&F Services. The terms of insurance coverages in the plans may vary by jurisdiction and not all insurance coverages are available in all jurisdictions. Insurance coverages in these plans are subject to terms, limitations and exclusions including an exclusion for pre-existing medical conditions. In most states, your travel retailer is not a licensed insurance producer/agent, and is not qualified or authorized to answer technical questions about the terms, benefits, exclusions and conditions of the insurance offered or to evaluate the adequacy of your existing insurance coverage. Your travel retailer may be compensated for the purchase of a plan and may provide general information about the plans offered, including a description of the coverage and price. The purchase of travel insurance is not required in order to purchase any other product or service from your travel retailer. CA DOI toll free number is 800-927-4357. The cost of your plan is for the entire plan, which consists of both insurance and non-insurance components. Individuals looking to obtain additional information regarding the features and pricing of each travel plan component, please contact Travel Insured International, P.O. Box 6503, Glastonbury, CT 06033; 855-752-8303; customercare@travelinsured.com; California license #013223. While Travel Insured International markets the travel insurance in these plans on behalf of USF, non-insurance components of the plans were added to the plans by Travel Insured and Travel Insured does not receive compensation from USF for providing the non-insurance components of the plans.

For Exclusions Please See Reverse Side

20250509-4464525