



WESTEND PERFORMING ARTS



PETITE
INFORMATION PACKAGE
2025

ABOUT US

Based in Sunshine, in Melbourne's West we are the premier performing arts studio in the West.

We strive to provide the best training for young performers, to encourage them to see their own potential, and strive towards excellence in dance, drama, singing, and performing arts.

Classes are available to students from 18 months to adult, for both those who want to learn to dance for fun and for those seeking to pursue a career in dance through our Elite Training Programs.

WestEnd Performing Arts is the official location of Ready Set dance, Ready Set Ballet, Ready Set Acro and Ready Set Move in Sunshine.

Students at WestEnd Performing Arts are encouraged to challenge themselves with an aim to better their skills through an exciting program.

WestEnd Performing Arts offers an extensive timetable of classes and have teamed with qualified, experienced and dedicated teaching staff providing only the best education.

We offer students the opportunity to participate in a mid year showcase, and end of year concert. Dancers wanting to take their dance training the next level also have the opportunity to participate in AICD Ballet exams, and Jazz and Tap exams through ATOD, as well as Acrobatic exams through Acrobatic Arts. Students also have the opportunity to be a part of our competitive teams as a soloist/ troupe member.

Our purpose built facility offers spaces for dancing, singing and drama. Fully sprung floors and mirrors in each studio. Comprehensive array of acrobatics, circus and dance equipment and a pleasant waiting and reception area.

We strive to make all students and families feel like they are a part of the WestEnd Performing Arts extended family.

OUR VALUES

A young girl in a white and black striped baseball uniform is captured in the middle of swinging a bat. She is wearing a matching cap and is looking towards the camera with a slight smile. The background is a solid light purple color.

As a parent, you play an important role in supporting your student financially, but your emotional support is of equal—and perhaps even greater—value. Encourage your child to be the best that he or she can be regardless of what others may achieve. Dance is an individual art form and children need to be allowed to achieve at a pace that's comfortable. No two students will progress at the same rate, even if they experience the exact same training. It's important to encourage children to focus on themselves, give their all, and be satisfied with their own accomplishments.

Not all children will develop into professional dancers. One of the primary goals of our faculty is to teach life lessons and skills that offer children the best chance for success. Dance education encompasses far more than technique and the steps your children learn. We believe the discipline of dance training gives young people a better understanding of commitment through learning, experiencing the spirit of teamwork, and discovering what they can accomplish through hard work. Our goal is to educate the minds, bodies, and souls of our students, teaching them the skills needed for a successful life, whether or not they stay involved in dance.

PASSION

Do what you love to do

CREATIVITY

Embrace your passion for the arts to explore creativity

TEAMWORK

Reaching in unity towards a common goal

EXCELLENCE

If you believe you will succeed

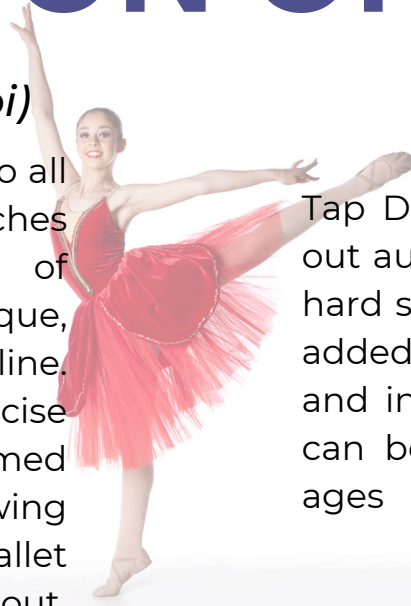
CONFIDENCE

Strong minds and strong bodies leads to confidence and future success

STYLES ON OFFER

BALLET (AICD Syllabi)

Classical Ballet is the core to all other dance styles. It teaches students the importance of posture, alignment, technique, grace, strength and discipline. Ballet is based on precise conventional steps performed with graceful and flowing movements. As exercise, ballet provides the best workout, giving strength, flexibility and grace.



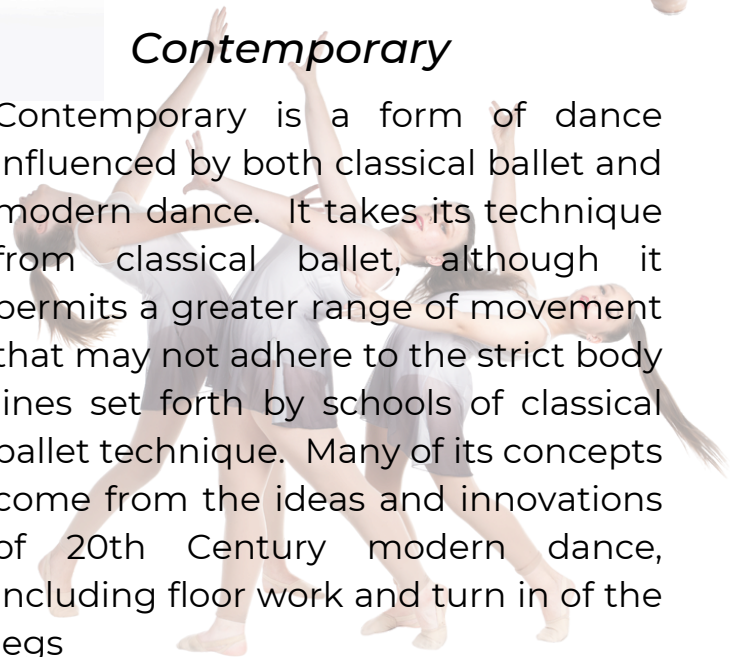
TAP (ATOD Syllabi)

Tap Dance is a step dance tapped out audibly by means of shoes with hard soles to which taps have been added. Tap Dance has many styles and interpretations of its own and can be enjoyed by students of all ages



Contemporary

Contemporary is a form of dance influenced by both classical ballet and modern dance. It takes its technique from classical ballet, although it permits a greater range of movement that may not adhere to the strict body lines set forth by schools of classical ballet technique. Many of its concepts come from the ideas and innovations of 20th Century modern dance, including floor work and turn in of the legs



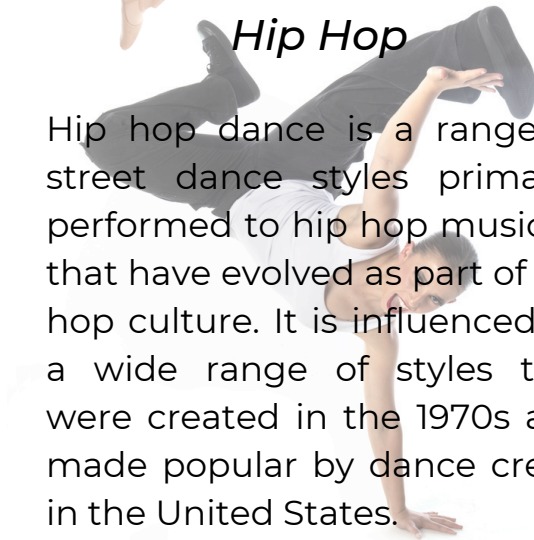
Jazz (ATOD Syllabi)

Jazz is continually changing and evolving genre, encompassing many styles such as Broadway, Musical Theatre, Commercial jazz, Lyrical jazz, just to name a few. Within a jazz dance routine, students can expect to learn movements like turns, jumps and pirouettes as well as step sequences, body isolations and contractions.



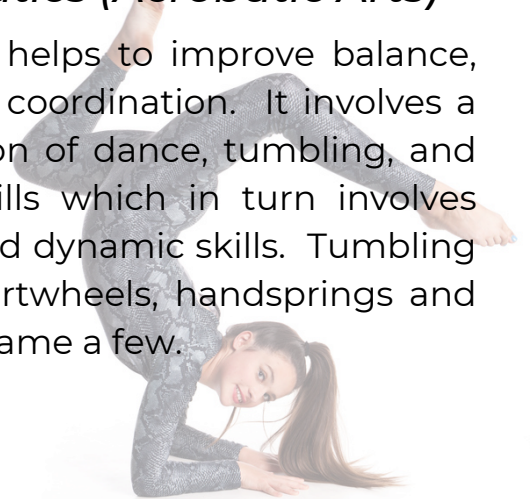
Hip Hop

Hip hop dance is a range of street dance styles primarily performed to hip hop music or that have evolved as part of hip hop culture. It is influenced by a wide range of styles that were created in the 1970s and made popular by dance crews in the United States.



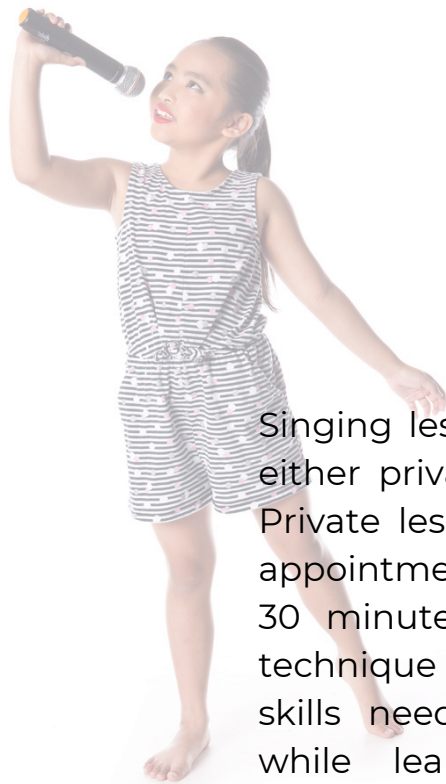
Acrobatics (Acrobatic Arts)

Acrobatics helps to improve balance, agility and coordination. It involves a combination of dance, tumbling, and partner skills which in turn involves balance and dynamic skills. Tumbling involves cartwheels, handsprings and aerials to name a few.



Musical Theatre

Musical Theatre is a combination of singing, dancing, and acting that can be seen in major musicals such as Mary Poppins, Hairspray and Westside Story. WestEnd Performing Arts puts on 2 major musicals a year that all students enrolled in Musical Theatre participate in, and have the opportunity to audition for the major roles, or be a part of the ensemble. In 2022 students put on 2 amazing shows, Shrek the Musical Jnr, and The Little Mermaid Jnr.



Singing

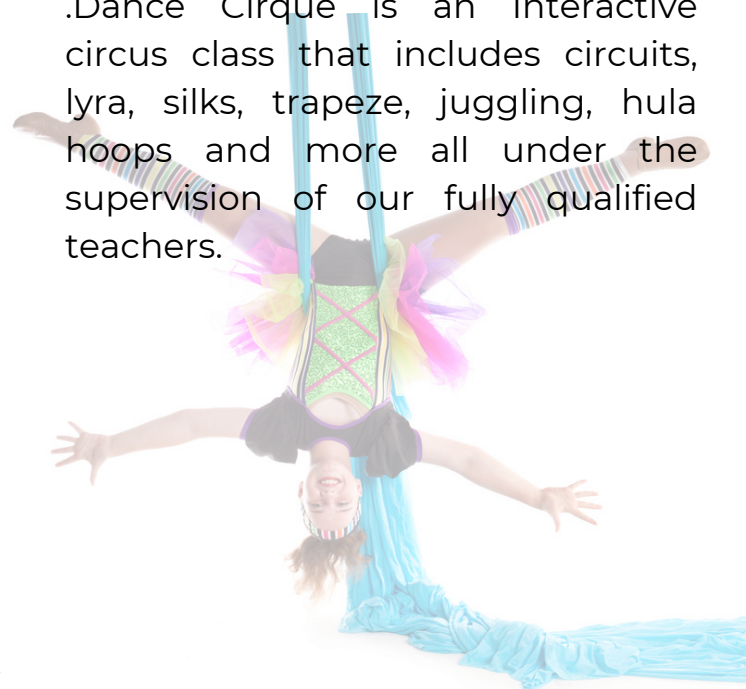
Singing lessons are available as either private or group lessons. Private lessons are available by appointment. They consist of a 30 minute lesson working on technique and performance skills needed to be a singer, while learning contemporary and modern songs.

Small group lessons consist of 30 minute lessons, providing beginner students the opportunity to learn singing in a supportive and non threatening environment, while focusing on the same skills as a private lesson

Dance Cirque

Roll up! Roll up! Introduce your child to something new and unique.

.Dance Cirque is an Interactive circus class that includes circuits, lyra, silks, trapeze, juggling, hula hoops and more all under the supervision of our fully qualified teachers.



COMPETITION TEAMS

We offer both group competition teams (troupes) and solo opportunities to those students who are passionate, committed and dedicated to their dance studies.

Troupe and soloist places are by invitation only. All students who are part of the team must enrol into specific, compulsory classes.

Participating in the team is a great opportunity for our students to understand the values of teamwork, as well as gaining experience as a performer.

If selected to join the team, parents and students must understand that a high level of dedication is expected. Students must attend all weekly classes and show a high level of commitment not only to their dancing, but also to their team.

All students who participate in our competition teams get the opportunity to perform in competitions, local festivals, charity events, and special events.

If you are interested in being a member of our competition teams, please talk our Director Anna for more information, or email the office.



ELITE TRAINING PROGRAM

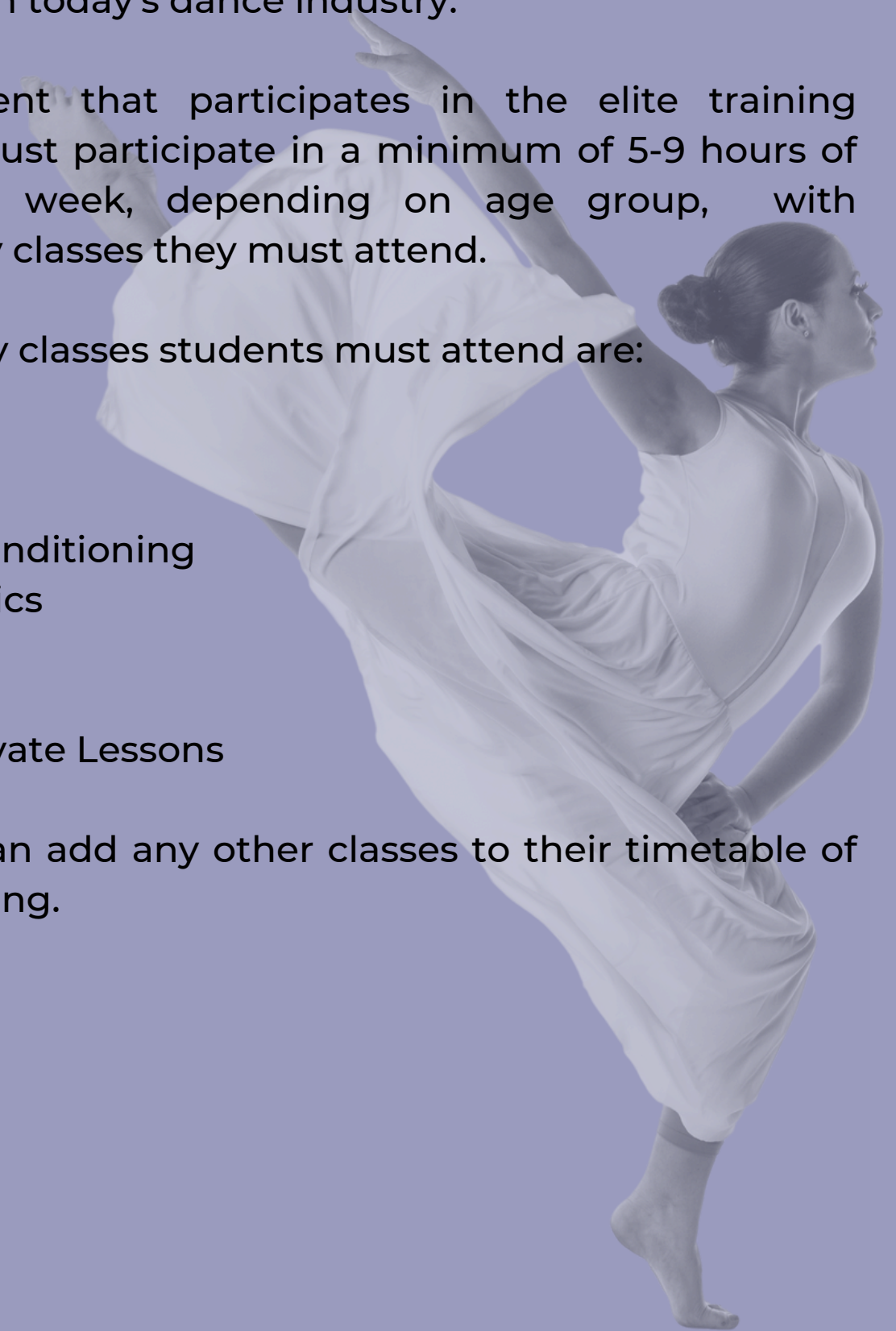
The Elite Training program is designed for students aged 8 years and over that wish to take dancing more seriously, and train towards a professional career in the industry. The Elite Training Program enables students to become strong, technical dancers, which is very important in today's dance industry.

Each student that participates in the elite training program must participate in a minimum of 5-9 hours of dance per week, depending on age group, with compulsory classes they must attend.

Compulsory classes students must attend are:

- Ballet
- Jazz
- Body Conditioning
- Acrobatics
- Tap
- Troupe
- Solo Private Lessons

Students can add any other classes to their timetable of their choosing.



PETITE TIMETABLE

TUESDAY	THURSDAY	FRIDAY	SATURDAY	SUNDAY
4:15 - 5:00pm Hip Hop	4.30-5.15pm Tap	4.30-5.30pm Musical Theatre Program	9.00-9.45am Ballet (Primary)	9.00-10:30 Mini/Petite Foundation (Prep - Grd 1)
5:00 - 5:45pm Contemporary /Lyrical	5.15-6.00pm Jazz	5:30 - 7:00pm Performance Troupe*	9.45-10.30am Jazz	9.00-9.45am Ballet (Grd 2-4)
5:45 - 6:30pm Circus	4.30-5.15pm Ballet (Primary and Grd 1)		10.30-11.15am Tap	9.45-10.30am Jazz(7 -10 Yrs)
	6.45-7.45pm Acrobatics		11.15-12.00pm Acrobatics	10.30-11:00am Acrobatics (Prep - Grd1)
			12.30 - 2.30pm Petite/Junior Performance Troupe*	10.30-11.15am Tap (7 - 10 Yrs)
				11.15-12.00pm Acrobatics (Grd2-4)



Please Note: Classes subject to change based on enrolment numbers.

*These classes are via invite or audition only. If you are interested in our Troupe Programs please email us.

PRIVATE LESSONS

Private lessons are available for all genres of dance as well as private singing lessons.

If you or your child are interested in pursuing this avenue, please email us directly to find out more on how we can support you in your journey and goals.

PETITE FEE STRUCTURE

- All fees are payable via direct debit. All fees must be paid in advance by a monthly direct debit via the bank account or credit card details you provided upon enrolment.
- Fees are direct debited from your nominated account on your first day of class, and then on 25th of each month for the following month. Fees will be run from February to December (11 months of payments)
- Fees are non-refundable/transerable
- All fees include the following:
 - Class Programs
 - End of year concert costume hire
 - Extra rehearsal fees for concert
 - End of year recording of concert
 - End of year concert T-shirt
 - New dance tights for end of year concert
- A \$30 Enrollment fee is due at the time of enrollment per student or \$50 per family.

Fees

30 min class	\$79 per month
45 min class	\$84 per month
60 min class	\$90 per month
90 min class	\$124 per month
120 min class	\$159 per month
Mini/Petite Foundation (Sunday Only)	\$99 per month
Group Singing	\$89 per month
Private Dance/Singing	\$146 per month
Musical Theatre Package	\$367 per month
Unlimited Package	\$389 per month

Discounts

2 Classes 10% Discount

3 Classes 15% Discount

4+ Classes 20% Discount

****Discounts do not apply to
Private lessons, Group singing
or Packages**

Packages:

Mini Foundation Join our Combo class of Jazz, Tap and Hip Hop all in once class!

Musical Theatre Package Explore all facets of musical theatre. This package includes one Ballet, Jazz, Tap and Musical Theatre classes per week as well as a Private Singing Lesson

Unlimited Class Package Explore all facets of Dance. This package includes all group dance, group singing, and Musical Theatre classes excluding performance troupe

For more information on Troupe or Elite packages, please contact our office at info@westendperformingarts.com.au

IMPORTANT DATES

PUBLIC HOLIDAYS

Monday 10th March - Labour Day
Friday 18th April - Good Friday
Saturday 19th April - Easter Saturday
Thursday 25th April - ANZAC Day
Monday 9th June - King's Birthday
Tuesday 4th November - Melbourne Cup

Term Dates

Term 1

Monday 3rd February - Sunday 6th April

Term 2

Monday 22nd April - Sunday 6th July

Term 3

Monday 21st July - Sunday 21st September

Term 4

Monday 6th October - Sunday 14th December

Concert Dates

Our End of Year Concert is open to all students and held towards the end of term 4. The end of year concert is our "Main Event" and the perfect opportunity for students to showcase what they have worked on in class throughout the year.

Our Mid Year Concert is a stage experience for all students, to allow students to gain experience on the stage, and in front of an audience. There are no costumes required for this concert.

All students enrolled in singing and musical theatre are given other opportunities throughout the year to perform in their chosen fields.

PETITE UNIFORM

Wearing a uniform ensures dancers are dressed correctly to enable teachers to see the alignment of their bodies while dancing. It also creates a sense of identity and belonging within the studio.

Students in our Mini's classes and above are required to wear either the WestEnd Performing Arts branded uniform items or leotards, and appropriate dance shoes for each class. All items are available to purchase via www.westendperformingarts.com.au or from our inhouse uniform shop.

Grade Primary - Mulberry



Grade 1 - Baby Blue



All Other Styles



POLICIES

GENERAL POLICIES

- Our classes rely on a positive atmosphere with cooperation and support from parents
- Showing respect is essential
- It is imperative that all teacher's time at the studio is focused on the classes at hand
- All queries must be directed to WEPA via email only
- Parents are to advise WEPA (in advance when possible) if their child will be absent from class
- Parents are encouraged to focus on their own child's progress and help their child avoid comparing themselves to other children. Watch for this behavior in your child as well and encourage them to focus on their own dance journey
- We all share a common goal to create a happy, healthy learning environment for all and most importantly HAVE FUN!
- If you have any concerns about any aspect of the school, please contact Anna via email so that those concerns can be addressed

STUDENT BEHAVIOUR

- All WEPA students are required to attend all classes and punctuality is important
- Students must, as a courtesy, apologise when interrupting a class or arriving late
- Students must be respectful towards their teachers at all times
- All students must always encourage each other and support their peers
- We all reserve the right to feel welcome, safe and part of our community whilst at the studios
- WEPA will not tolerate any form of bullying or harassment by students, families or staff
- WEPA will not tolerate behavior that affects and disrupts the learning of others

COMMUNICATION POLICY

- All communication to WEPA is to be via email, or WEPA's public Facebook Messenger.
- In an emergency please call WEPA on 0477 999 670
- Phone calls, text messaging or Facebook messages to staff's personal numbers and accounts are not an accepted form of communication. Please communicate all studio communication through the proper channels.
- Parents/Guardians are responsible for checking emails for information and account statements distributed by WEPA
- It is the responsibility of each family to read and understand all information WEPA encourage families to join our Facebook and Instagram pages, as well as Band App. (For Band App access, please speak to our office staff or your teacher)

POLICIES

FEES POLICY

- I/We authorise and request BECS to debit payments from my/our account as specified below at intervals and amounts as directed by WestEnd Performing Arts as per the terms and conditions of my agreement with WestEnd Performing Arts and in accordance with the Direct Debit Request and the BECS DDR Service Agreement.
- All fees must be paid in advance by a monthly direct debit via the bank account or credit card details you provided upon enrolment, If you do not do this the student will not be permitted to participate in the class.
- Outstanding debts will be forwarded to our debt collection agency.
- If you are unable to make payment on the scheduled date simply contact the office (at least 48 hours prior to the debit) and we will happily reschedule your debit date and you will avoid the dishonour fee
- All fees are inclusive of GST.
- WEPA requires a minimum of 4 weeks' notice in writing, to cancel or change a student's enrolment details and associated payments.
- Fees are neither refundable nor transferable between students or terms.
- Students MUST dance from home if they are unwell. WEPA will provide dance instruction via Zoom class links. There will be no refunds for students not attending class due to illness AND/OR if government restrictions require us to stop face-to-face learning. If government imposed restrictions require us to once again close our doors we will revert to immediate online learning platforms. By enrolling with WEPA you are agreeing to this approach and understand that you will not be refunded for any fees paid.
- If a student is going to be away for extended periods of time (i.e. 4 weeks or more within one term) discounted fees may be applied for in advance. These arrangements must be made prior to the commencement of term and discounts will be at the discretion of the Principal. Discounts will not be available for those classes with waiting lists in place.