



# Deline HOA Newsletter

Winter 2021

You are invited to join us! **HOA** Meets at 7 PM on the 3<sup>rd</sup> Tuesday of each Month.

Meetings will be held via Zoom until further notice.

Please visit the Deline HOA Facebook group or email us for the link.

## **Greenspace Improvement Project**

This past fall saw the beginning of the creek cleanup project! The first stage was the physical removing all of the non-native species. Once the plants begin to regrow this spring, environmentally-friendly herbicides will be used. For the past 2 years, our HOA has been working with the Cross Creek HOA, Clean Water Services, and the Urban Conservation Program on this project. Together, we have created a survey to better understand the usage wants and needs of our common areas. **Please take time to fill out the survey before February 15<sup>th</sup> using this link:** <https://www.surveymonkey.com/r/LLHZ2DB>  
Feel free to reach out to the board with questions.

## **Holiday Decoration Contest Winners!**

**Thank you** to everyone who made the holidays brighter by decorating this year! There were a lot of fantastic decorations. **Congratulation** to Lots 265, 270, and 291, our Halloween decoration winners and Lots 277, 278, 312 and 395, our Christmas lights winners!

## **Save the Date**

As warmer weather approaches, the board will be looking for safe activities to sponsor and begin scheduling dates for our annual meetings and potential summer activities. **Be sure to watch the Facebook page, bulletin board, and mailboxes for information about HOA sponsored activities.**

**Continued on Back**

## **HOA Board Members:**

### **President:**

Amber Anderson 503-547-9122

### **Vice President:**

Patti Schilasky 503-260-5531

### **Secretary:**

Mary Keller 360-460-1337

### **Treasurer:**

Jon Keller 816-516-0066

### **RV Lot:**

Steve Schlangen 503-828-2917

### **Board Members:**

April Nichols 503-515-8883

Rachael Osmon 503-330-1437

### **Email us:**

[delinehoa@gmail.com](mailto:delinehoa@gmail.com)

### **Check us out on Facebook:**

<https://www.facebook.com/groups/delinehoa/>

### **Website:**

<http://www.delinehoa.com/>

### **U.S. Mail:**

Deline HOA  
P.O. Box 5091  
Aloha, OR 97078

## **Contacting the Board**

The Deline HOA Facebook page is a great way to post comments or ask questions to the community in general, yet it is not a practical way to reach the board as a collective. While we will do our best to respond on Facebook, **the best way to reach the board is to attend meetings or by email or physical mail to the addresses provided.** For urgent matters, please call or text any board member.

## **Deline HOA Park**

Our playground, tennis court, and green space have been following the THPRD schedule for closure and currently remains open. We have installed hand sanitizer stations to aid in reducing the spread of germs while using the facilities. **Please be responsible and remember to adhere to local, state, and federal guidelines when using public areas.**

## **Neighbors Helping Neighbors**

With everything currently happening in the world, it is more important than ever to watch out for

others in our community. **Please take time to check on your neighbors.** If you or anyone you know is in need, please don't hesitate to reach out to the board.

## **CC&R and Bylaw Updates**

Over the next 2 years, **we will be working to update the CC&Rs and bylaws.** We would ask that you take the time to read over them. If there are any sections that you feel need updating, please bring them to the attention of the board. We would love our input! We have formed a committee to tackle this task. If you would like to help with this, please contact the board.

## **Board Needs**

We are in need of homeowners willing to serve as board members, alternate board members, and committee members. Please contact the board if you are willing to help in any capacity.

## **RV Lot Availability**

The RV lot is currently full. Contact **Steve Schlangen** to get your name on the wait list, schedule a tour, or receive RV lot information.

## **Important Info:**

**Non-emergency Public Safety**  
503-629-0111

**Washington County Sheriff's Community Outreach Specialist**  
Kody Harris  
503-846-2774

**Northwest Natural Gas**  
1-800-422-4012  
[www.nwnatural.com/CustomerService/ContactUs](http://www.nwnatural.com/CustomerService/ContactUs)

**PGE (Power outage)**  
1-800-544-1795  
[www.portlandgeneral.com/outages](http://www.portlandgeneral.com/outages)

**TVWD**  
503-848-3000  
[www.tvwd.org/customer-services.aspx](http://www.tvwd.org/customer-services.aspx)

**Animal Services/Shelter**  
503-846-7041  
[www.co.washington.or.us/HHS/AnimalServices/AnimalShelter/](http://www.co.washington.or.us/HHS/AnimalServices/AnimalShelter/)

**WC Landuse and Transportation – Road Projects**  
503-846-7810  
[www.wc-roads.com](http://www.wc-roads.com)

**Hillsboro Planning Dept - South Hillsboro**  
503-681-3999  
[www.hillsboro-oregon.gov/living-here/south-hillsboro](http://www.hillsboro-oregon.gov/living-here/south-hillsboro)

**CWS**  
[www.cleanwaterservices.org/contact-us/](http://www.cleanwaterservices.org/contact-us/)

**Underground utility locate Before you dig!!**  
811  
<http://call811.com/before-you-dig>

January 21st, 2021

Dear Deline HOA resident,

For over sixty years, the Tualatin Soil & Water Conservation District (Tualatin SWCD) has worked with residents of Washington County to address a variety of natural resource challenges on a voluntary basis. Our **urban conservation program** focuses on enhancing habitat along streams and creeks throughout urban parts of the county. We do this by working closely with residents to improve wildlife habitat and water quality for this and future generations.

Over the next several years, Tualatin SWCD and Clean Water Services will be working with your Homeowner Association (HOA) to develop a new wildlife-friendly, natural landscape within your creekside area and nearby greenspace. This project intends to increase wildlife habitat by removing invasive plants and replanting with native trees and shrubs. Once established, these plants will filter rainwater runoff and improve water quality.

As such, we are asking residents to complete a Greenspace Improvement Survey to help us better understand how you currently use your creekside area and nearby greenspace and what features you would like included in the new landscape. Please follow the QR code or link below to access the survey. Please complete this survey no later than **February 15th, 2021** to assist us in creating a design that will benefit your community, wildlife habitat and water quality.

Throughout this project, HOA members will be asked to review and provide feedback on proposed landscape designs. Additionally, volunteer planting events will be taking place over the next several years. You may see changes to your greenspace, but we want you to be a part of the process along the way!

We welcome your feedback and invite you to get involved in the transformation of your local greenspace!

Sincerely,

Briita Pajunas  
Urban Conservation Specialist  
[Briita.Pajunas@tualatinswcd.org](mailto:Briita.Pajunas@tualatinswcd.org)  
503-334-2288 ext. 105  
[www.TualatinSWCD.org](http://www.TualatinSWCD.org)



Survey Link:

[www.surveymonkey.com/r/LLHZ2DB](https://www.surveymonkey.com/r/LLHZ2DB)



# Butternut Creek Tributary

## Greenspace Improvements

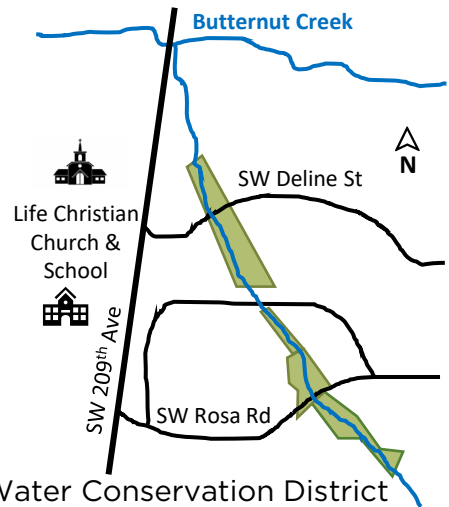
*A Better Space for Water, Wildlife, and People*

Butternut Creek starts its journey near Aloha High School and flows over four miles before emptying into the Tualatin River. Along the way, several streams, like the one in your neighborhood, joins Butternut Creek. These important streams help water move across the land and provide habitat for wildlife. They have become degraded over time as invasive plants have restricted water movement and reduced wildlife habitat.

### Greenspace Improvements

Over the next several years the Tualatin Soil and Water Conservation District and Clean Water Services will be working with Deline and Cross Creek Homeowner Associations to restore wildlife habitat and help improve water quality. The goals of this project are to:

- Remove invasive plants that threaten the health of your greenspaces.
- Enhance wildlife habitat by planting native wildlife friendly plants.
- Plant trees and shrubs to hold soil in place and prevent erosion.
- Offer opportunities for residents to help with the restoration effort.



### What does habitat restoration look like?



**Deline HOA (2020)**



**Similar site - 5 years after planting**

A similar restoration project was recently undertaken by a Washington County resident along White Creek. Invasive plants, like reed canary grass, had overtaken the creek's banks leading to erosion caused by shallow plant roots. After several years of site preparation, native wetland plants and trees were planted to create a more diverse, healthy habitat for wildlife and water quality (right).





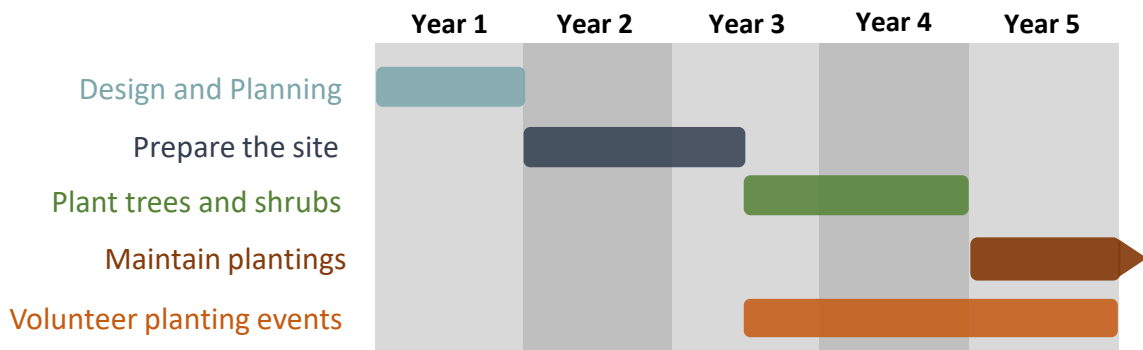
## What happens during a habitat restoration project?

A phased restoration plan is established for the project that includes initial weed control to long-term maintenance after planting. Throughout this process, you may see changes to your greenspace, but we want you to be a part of the process along the way! During a restoration project, licensed restoration professionals are contracted to:

- Control invasive species to prepare the site for new native planting.
- Plant native trees and shrubs in the areas where invasive species have been successfully removed.
- Monitor and maintain new plants regularly during the first three to five years of the project.

## What is the project timeline?

Preparing the area and completing the restoration work will occur over approximately five years. After the project establishment phase, periodic maintenance will be required to ensure the project's success. Initially, the site may appear bleak, but it will soon green up with vigorous new growth and diversity as native plants become established and high-quality habitat is created.



## Want to get involved?

HOA members will be asked to review and provide feedback on proposed landscape designs during 2021, and volunteer planting events will be taking place over the next several years. We welcome your feedback and invite you to get involved in the transformation of your local greenspace!



Questions? Contact Briita Pajunas  
[Briita.Pajunas@tualatinswcd.org](mailto:Briita.Pajunas@tualatinswcd.org)  
503.334.2288 ext. 105



**Tualatin Soil and Water**  
CONSERVATION DISTRICT

