

# Bi-LED headlights for C6 Corvette Installation Guide

By Radioflyer Innovations

# Tools list

## Required tools

- Torx 15 screwdriver
- Philips head screwdriver
- 10mm wrench/socket
- 7mm wrench/socket
- Microfiber towel
- Jack and jack stands

## Suggested Tools

- Panel-Puller tool
- Socket extension suggested
- Cordless drill with socket adapter suggested
- Creeper (or blanket/cardboard sheet unless you have a really nice garage floor)

1. Jack up the front of the car, secure with jack stands.
2. Identify and remove the 10mm nut just in front of the air dam.



3. Remove the plastic retaining pins shown here. (ZO6 and ZR1 cars also require removal of wheel leading-edge splash guards to access these pins)

A panel-removal tool is ideal here, but a pair of needle nose pliers will work with patience.

Once these are removed, you can slide out the panel as an entire piece.





4. Remove the  
Torx 15 screws  
along the  
fender.

5. Remove the  
four 10mm  
screws on the  
front bumper.



6. Firmly lift the front bumper to reveal an additional Torx 15 screw on the fender. Remove this screw.

(It's suggested to use a microfiber towel and another screwdriver to hold this panel open while you remove the T15 screw)





7. From under the car, there are three 10mm nuts that hold the fender to the front bumper. Remove these (A ratchet socket or cordless drill with an extension will help here)



8. Three 10mm nuts with large washers hold the headlight in place. Remove these nuts to release the headlight.

Disconnect the headlight's harness then pull the fender and bumper apart and wiggle the headlight free.



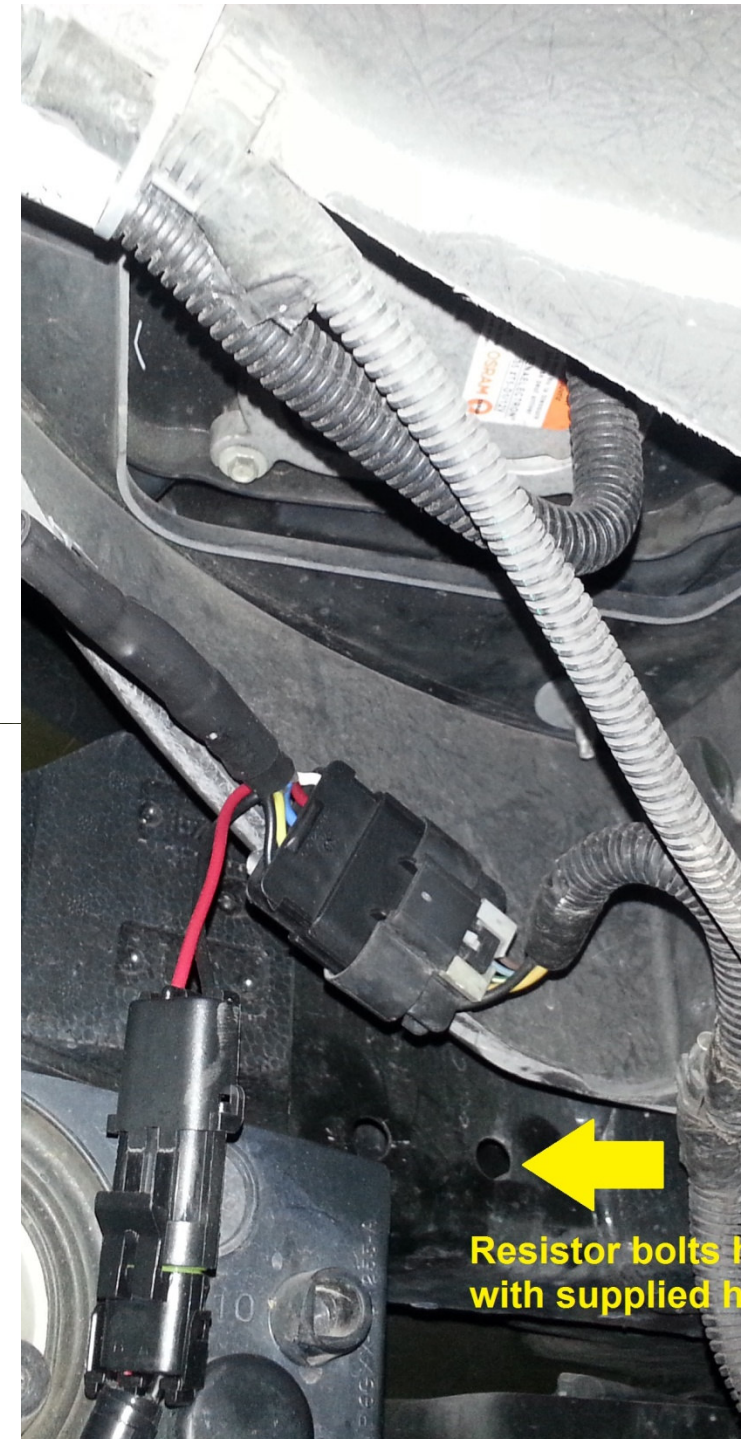


9. Install your new headlights by sliding them in the same way the old ones slid out. Be sure the harness and all its components drop through the large central cutout. Connect your headlight to the factory connector.

Bolt the resistor to the hole shown here. Secure the two black boxes on the harness with the supplied double-sided tape to a clean-flat surface.

10. Check all headlight functions (low, high, signal and DRL) Note: Automatic cars must be in D for DRL to function. When you're satisfied, Repeat for second side. Remember to replace all the hardware you removed in reverse order.

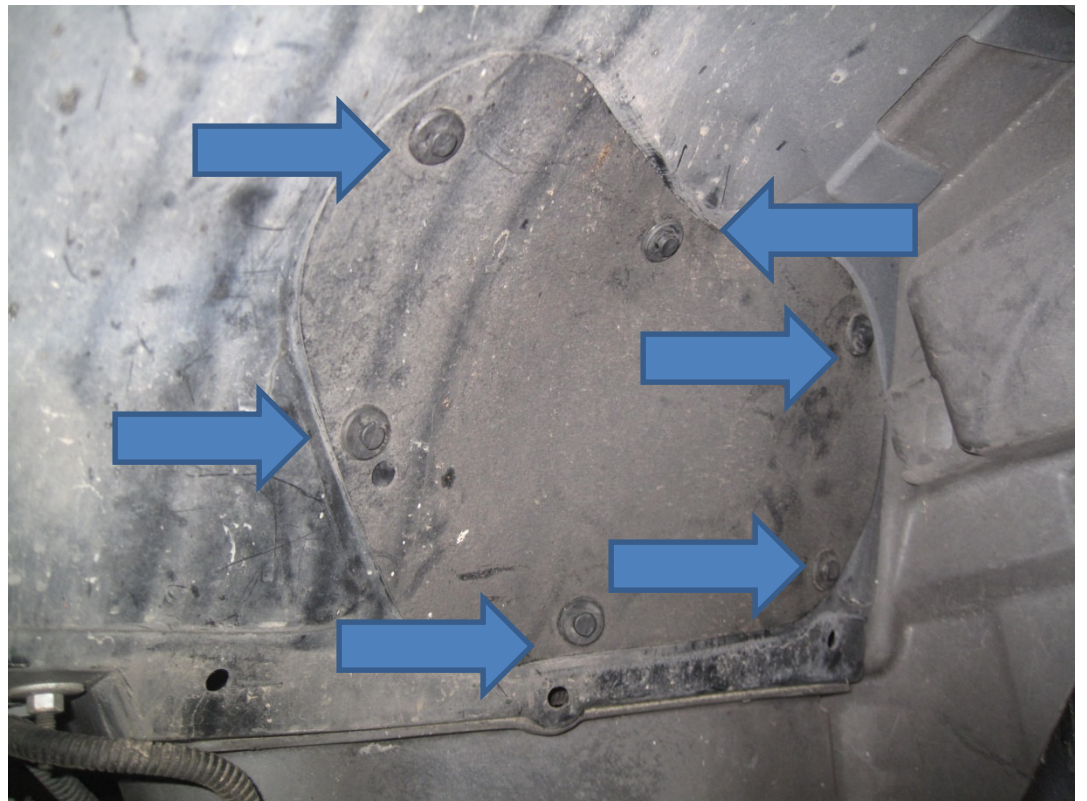
[radioflyerinnovations.com](http://radioflyerinnovations.com)



# Aiming

1. Remove the retaining pins on the headlight access panel to see the two Philips head screws on the back of the headlight. These are the horizontal and vertical adjustment screws.

(driver's side shown here)



2. At a distance of at least 15 feet (ideally 30+) adjust each headlight until the pattern looks like this: The “step” from each headlight should be as far apart as the headlights themselves and the left side of each beam should be no more than 24” from the ground.

(This CAN be done with the car sitting on the ground  
.....if you have small enough forearms)






# FINISHED

If you are happy with this product, be sure to tell others. Please leave a review at [radioflyerinnovations.com](http://radioflyerinnovations.com) or the Corvette Forum.

Thank you for purchasing from Radioflyer Innovations.

[radioflyerinnovations.com](http://radioflyerinnovations.com)

A black Corvette is shown from a front-facing perspective at night. The car's headlights are illuminated, casting a bright glow. The car is parked on a dark surface, and the background is dark with some foliage visible. The overall scene is dimly lit, emphasizing the car's lights.