



Bi-LED headlights for C6 Corvette

Installation Guide

Tools list

Required tools

- Torx 15 screwdriver
- Philips head screwdriver
- 10mm wrench/socket
- 7mm wrench/socket
- Microfiber towel
- Jack and jack stands

Suggested Tools

- Panel-Puller tool
- Socket extension suggested
- Cordless drill with socket adapter suggested
- Creeper (or blanket/cardboard sheet unless you have a really nice garage floor)

1. Jack up the front of the car, secure with jack stands.
2. Identify and remove the 10mm nut just in front of the air dam.



3. Remove the plastic retaining pins shown here. (ZO6 and ZR1 cars also require removal of wheel leading-edge splash guards to access these pins)

A panel-removal tool is ideal here, but a pair of needle nose pliers will work with patience.

Once these are removed, you can slide out the panel as an entire piece.



4. Remove the Torx 15 screws along the fender.

5. Remove the four 10mm screws on the front bumper.



6. Firmly lift the front bumper to reveal an additional Torx 15 screw on the fender. Remove this screw.

(It's suggested to use a microfiber towel and another screwdriver to hold this panel open while you remove the T15 screw)



7. From under the car, there are three 10mm nuts that hold the fender to the front bumper. Remove these (A ratchet socket or cordless drill with an extension will help here)



8. Three 10mm nuts with large washers hold the headlight in place. Remove these nuts to release the headlight.

Disconnect the headlight's harness then pull the fender and bumper apart and wiggle the headlight free.



9. Install your new headlights by sliding them in the same way the old ones slid out. Be sure the harness and all the components drop through the large central cutout. Connect your headlight to the factory connector.

10. To ensure correct function of the DRL and flash-to-pass system, your headlights come with a custom harness for each side. The harness installed between the factory 5-pin connector and the headlight. There is also a red wire coming out of the harness with a single-pin connector. This connects directly to the headlight. (You may discard the long red-wire harness that came with your headlights)

Bolt the resistor to the existing hole shown by the arrow.

Secure the two black boxes on the harness with the supplied double-sided tape to a clean-flat surface.



11. Check all headlight functions (low, high, signal and DRL)

When you're satisfied, Repeat for second side. Remember to replace all the hardware you removed in reverse order.

Note: Automatic cars must be in D for DRL to function.

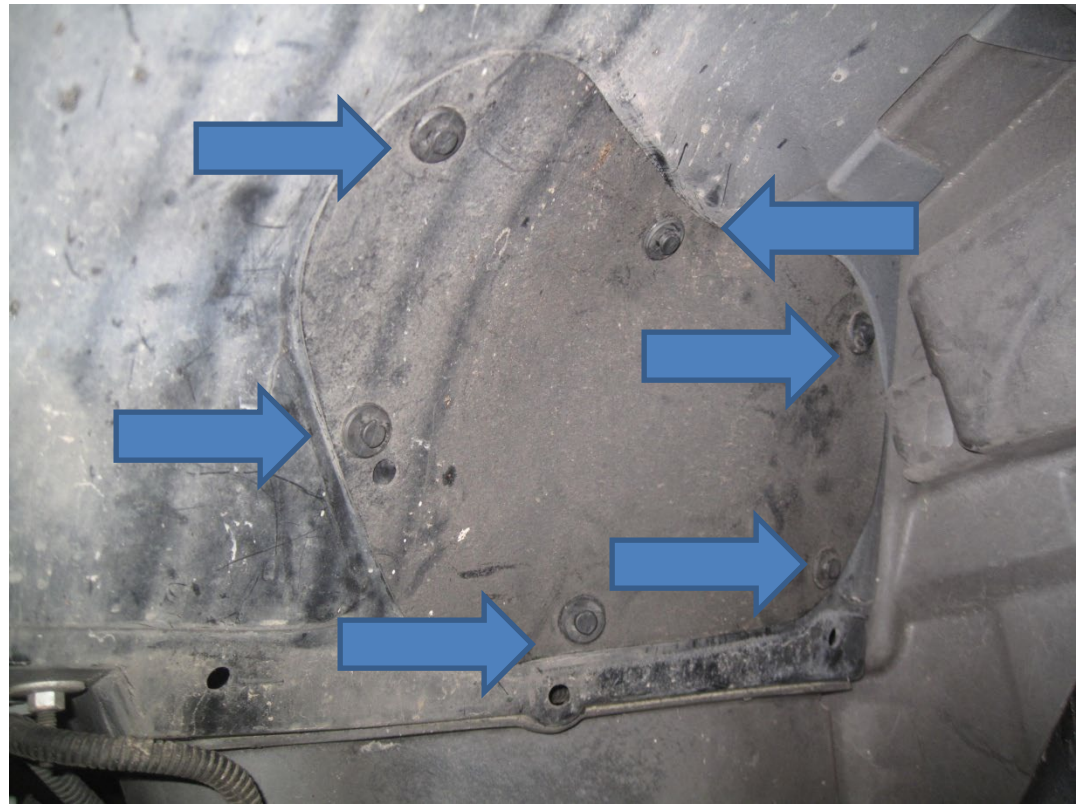
Note: The e-brake will disable DRL function (even if it's up just one click)



Aiming

1. Remove the retaining pins on the headlight access panel to see the two Philips head screws on the back of the headlight. These are the horizontal and vertical adjustment screws.

(driver's side
shown here)



2. At a distance of at least 15 feet (ideally 30+) adjust each headlight until the pattern looks like this: The “step” from each headlight should be as far apart as the headlights themselves and the left side of each beam should be no more than 24” from the ground.

(This CAN be done with the car sitting on the ground
.....if you have small enough forearms)



FINISHED

If you are happy with this product, be sure to tell others.
Please leave a review at sharplightinnovations.com and/or the
Corvette Forum.

Thank you for purchasing from Sharp Light Innovations.

