



SOUTHERN
VALVE &
CONTROL



A SOUTHERN VALVE & CONTROL INNOVATION

BIO-CHECK

Southern Valve & Control is a high-quality remanufacture of Valves. Our leadership team has decades of valve experience, including design, testing, manufacturing, sales, and modification of valves. We're dedicated to the Reseller and Distributor model. We support various industries including Oil & Gas, Chemical Processing, Power Generation, Paper & Pulp, Industrial, Municipal and Bio Fuels.

CONTACT US TODAY!

SALES@SOVALVECONTROL.COM
337-608-8824

1109 MAURICE RD.
BROUSSARD, LA 70518

BIOCHECKVALVE.COM

DISTRIBUTOR

SIERRA NEVADA SALES
661-301-5586

4630 EASTON DR. UNIT 2
BAKERSFIELD, CA 93309

SIERRANEVADASALES.COM



ALL SVC MANUFACTURED PRODUCTS ARE BACKED BY A 2-YEAR WARRANTY

THE CHECK VALVE DESIGNED EXCLUSIVELY FOR ANAEROBIC DIGESTERS

- ✓ If you have a Meat or Dairy digester, you've got gas and liquids. But you're in the business to sell gas not the liquids in the digester. Southern Valve & Control has designed and patented the worlds first check valve exclusive to the digester industry.
- ✓ Does gathering liquids result in unnecessary, costly shutdowns of your equipment? We've got the solution. Bio-Check a Southern Valve & Control innovation will make those shut downs a thing of past.
- ✓ Available in 150# flanged sizes from 4-8" (other sizes POA)
- ✓ Made of Machined Stainless Steel and using Viton Elastomers, Bio-Check Meets NACE requirements for H2s and other damaging gases associated with Methane production and gathering.



HOW IT WORKS

Bio-Check works on a similar principle as a float check, but accounts for things like density, water level in the digester, the ability to shut off gas flow before gas enters your gathering system and ability to break vacuum mechanically when water levels return to normal operation.

AVAILABLE SIZES

4", 6", and 8" 150# Flanged (other sizes made to order)

MATERIALS OF CONSTRUCTION:

300 Series Stainless

SS Tubing

Viton Seat w/300 Series
Stainless Back Up

SS In line Check Valve

(Meets NACE MR-0175 ISO-15156)
Other Materials Made To Order, POA

STANDARD BILL OF MATERIALS

Seat Carrier Base Plate

Weighted Float

Valve Body Top Half

Bolting

Seat Carrier

Anti-Contamination Mesh

Valve Seat

Hose Clamps

Soft Seat Retainer

Viton O-Rings

Viton Soft Seat

Instrument Tubing

Cage Retainer Plate

Instrument Fittings

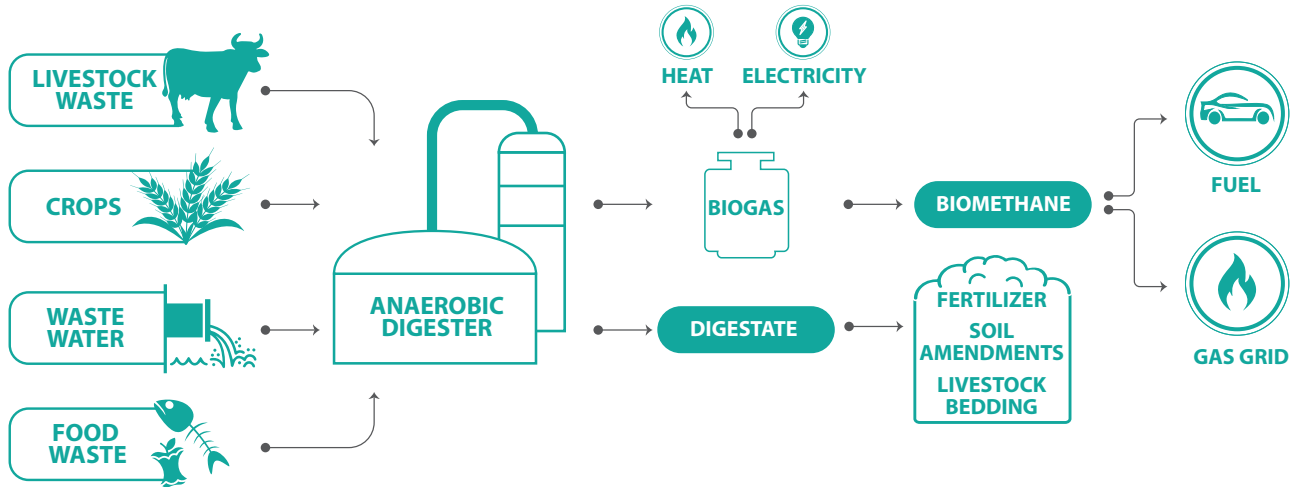
Cage Rods

Inline Check Valve

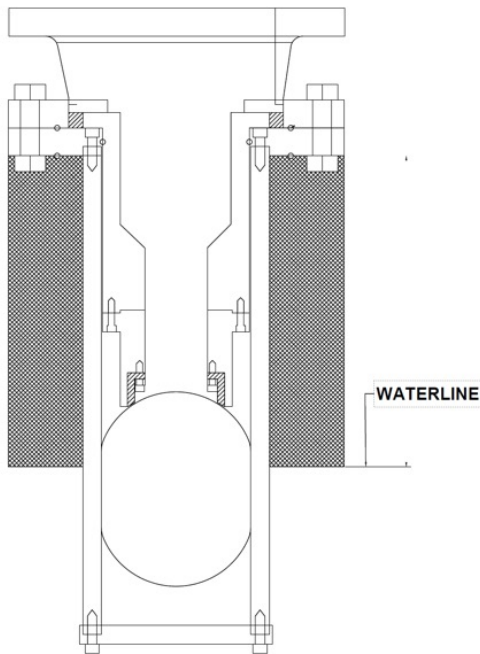


ALL SVC MANUFACTURED PRODUCTS ARE BACKED BY A 2-YEAR WARRANTY

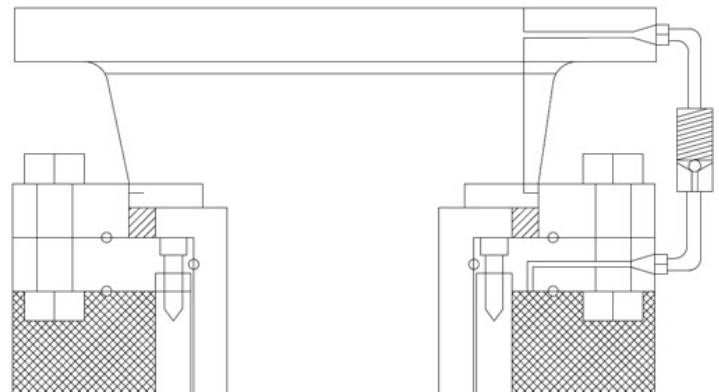
ANAEROBIC DIGESTION PROCESS



GENERAL ASSEMBLY DRAWING



VACUUM BREAKER



US DESIGN PATENT 63/431,275 PENDING

OUR OTHER SERVICES

DID YOU KNOW?  WE OFFER CORE CREDITS ON USED EQUIPMENT

REMANUFACTURED FISHER



REMANUFACTURED ORBIT



REMANUFACTURED BETTIS

