

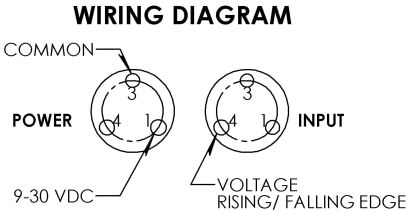
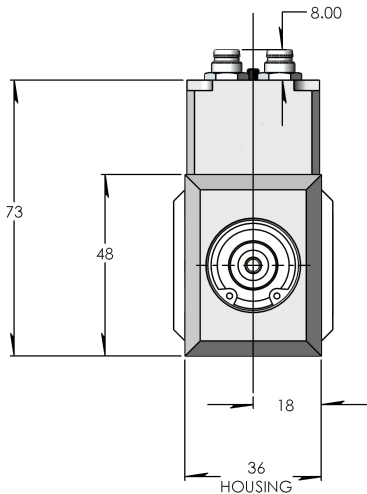
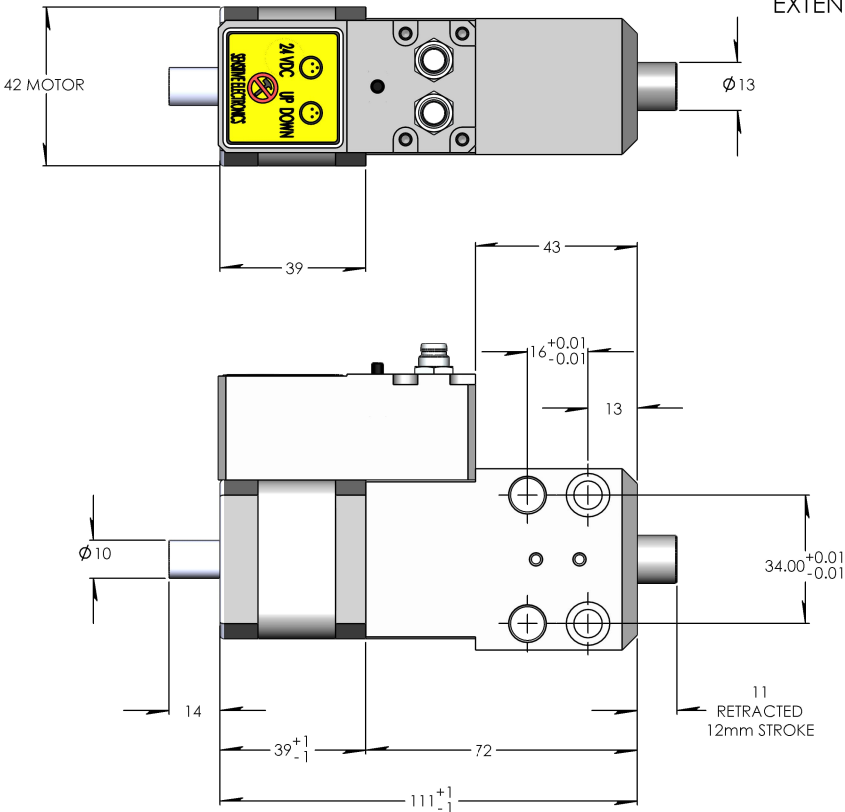
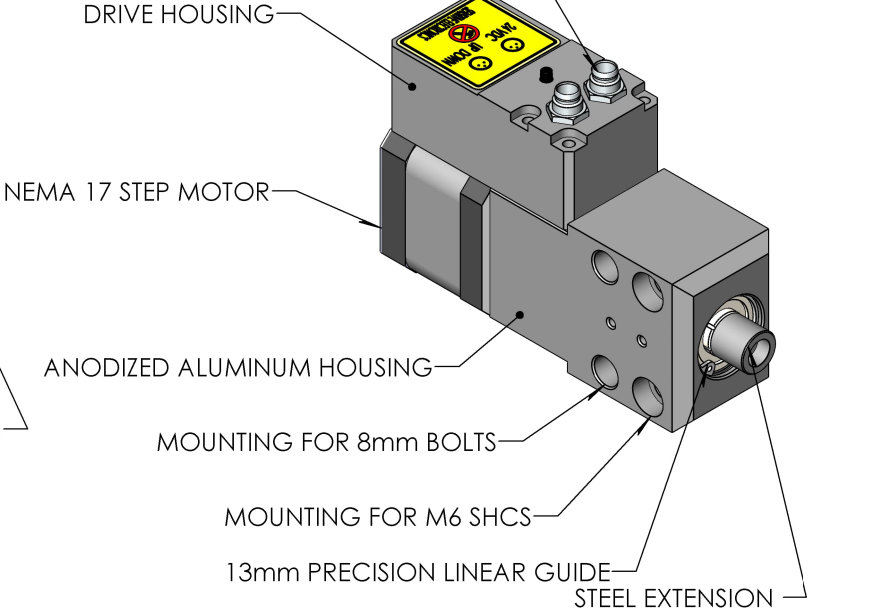
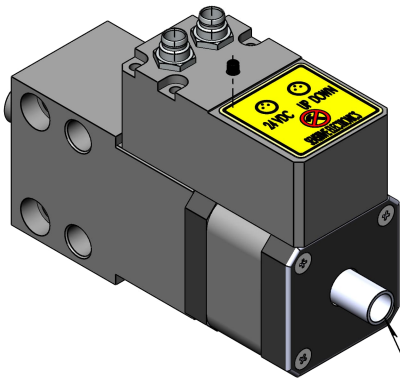
MOTOR, POWER RATING (WATTS), VOLTAGE, CURRENT (MAX AND OPERATING)

MOTOR SIZE: NEMA 17 (42mm FRAME)  
RATED AMPS: ~1.0A WHEN MOVING, ~0.3A IDLE  
INPUT VOLTAGE: 9-30VDC (24VDC TYPICAL)

12mm RETRACT TIME: 1000MS  
12mm EXTEND TIME: 375MS

CONNECTIONS:  
MICRO 3-1 POWER (+24VDC, OVDC)  
MICRO 3-2 SIGNAL

SIDE LOAD =18KGF  
STROKE = 12mm  
RATED THRUST FORCE RETRACTING = 7 KGF



THIS PRINT SUPERSEDES ANY OTHER DOCUMENT INCLUDING ELECTRONIC MODELS SUPPLIED BY MECHATRONIC TECHNIQUES  
THE SPECIFICATIONS AND DATA ON THIS PRINT ARE BELIEVED TO BE ACCURATE AND RELIABLE.  
HOWEVER, IT IS THE RESPONSIBILITY OF THE PRODUCT USER TO DETERMINE THE SUITABILITY OF THE COMPONENT FOR THEIR SPECIFIC APPLICATION.  
WHILE DEFECTIVE PARTS WILL BE REPLACED WITHOUT CHARGE WITHIN THE PRODUCT WARRANTY PERIOD, NO LIABILITY IS ACCEPTED BEYOND SUCH REPLACEMENT.

PROPRIETARY AND CONFIDENTIAL  
THE INFORMATION CONTAINED IN THIS  
DRAWING IS THE SOLE PROPERTY OF  
MECHATRONIC TECHNIQUES. ANY  
REPRODUCTION IN PART OR AS A WHOLE  
WITHOUT THE WRITTEN PERMISSION OF  
MECHATRONIC TECHNIQUES IS  
PROHIBITED.

		UNLESS OTHERWISE SPECIFIED:		NAME	DATE	MECHATRONIC TECHNIQUES INC.	
		DIMENSIONS ARE IN MILLIMETERS		DRAWN	TEC	TITLE:	
		TOLERANCES:		CHECKED		CONVEYOR STOPPER	
		ANGULAR $\pm 0.50$ DEG		ENG APPR.		SIZE DWG. NO.	
		NO DECIMAL PLACE $\pm 1.500$		MFG APPR.		C LT7101031 LF	
		ONE PLACE DECIMAL $\pm 0.750$				REV	
		TWO PLACE DECIMAL $\pm 0.380$				SCALE: 1:1	
		THREE PLACE DECIMAL $\pm 0.127$				WEIGHT:	
		INTERPRET GEOMETRIC TOLERANCING PER:				SHEET 1 OF 1	
		MATERIAL					
		FINISH					
		APPLICATION					
		DO NOT SCALE DRAWING					