

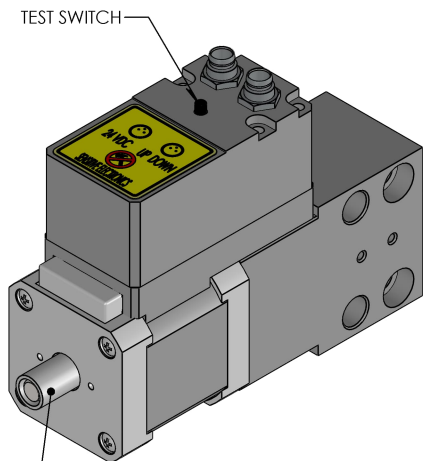
MOTOR, POWER RATING (WATTS), VOLTAGE, CURRENT (MAX AND OPERATING)

MOTOR SIZE: NEMA17 (42mm FRAME)
RATED AMPS: ~2.0A WHEN MOVING, ~0.3A IDLE
INPUT VOLTAGE: 9-30VDC (24VDC TYPICAL)

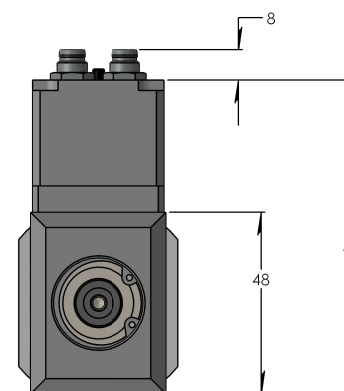
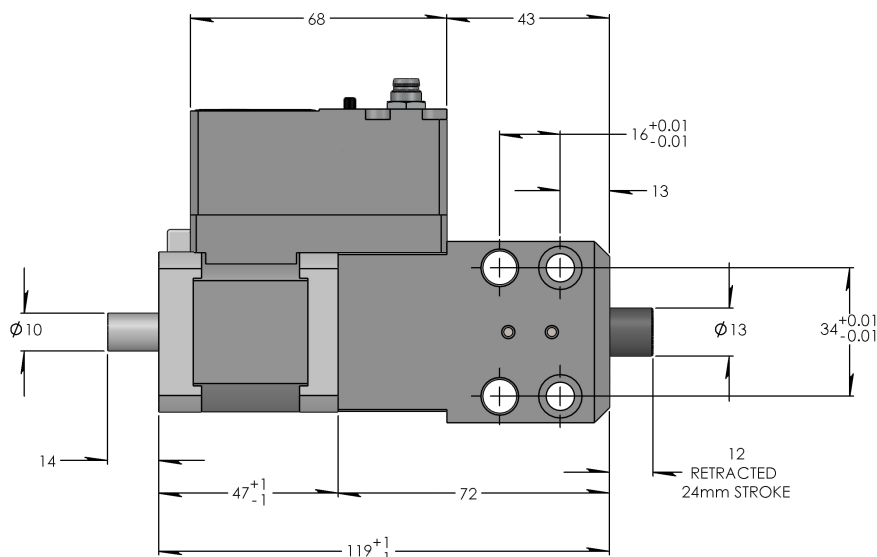
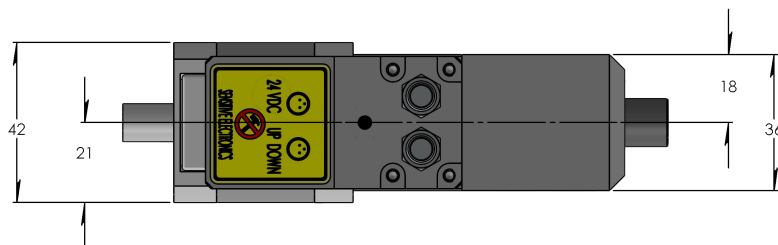
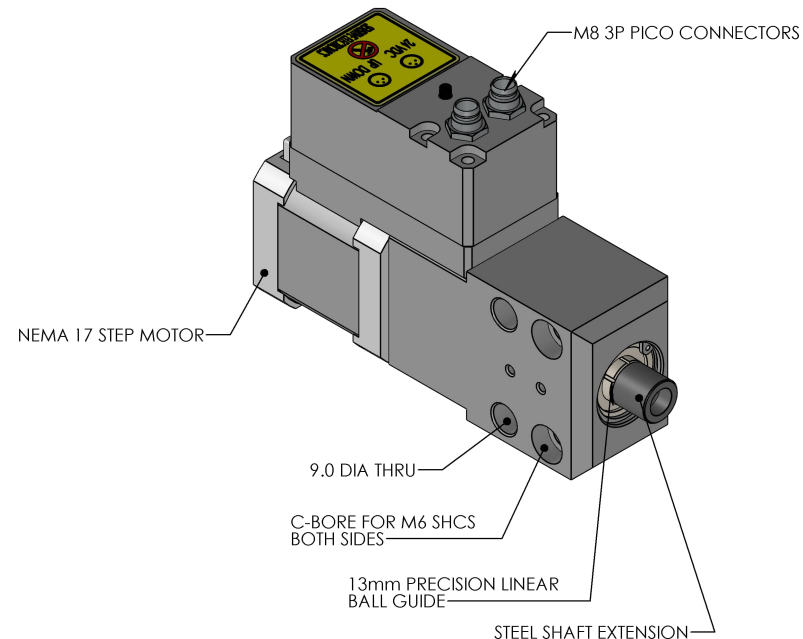
24mm RETRACT TIME: 1000MS
24mm EXTEND TIME: 375MS

CONNECTIONS:
MICRO 3-1 POWER (+24VDC, 0VDC)
MICRO 3-2 SIGNAL

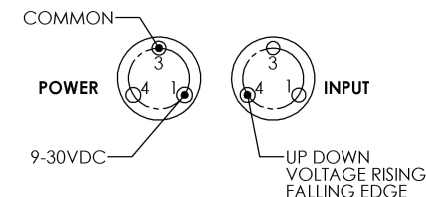
SIDE LOAD = 18KGF AT EXTENSION
STROKE = 24mm
RATED THRUST FORCE RETRACTING = 7 KGF



EXTENDED ROTOR FOR HAND DRIVE



WIRING DIAGRAM



THIS PRINT SUPERSEDES ANY OTHER DOCUMENT INCLUDING ELECTRONIC MODELS SUPPLIED BY MECHATRONIC TECHNIQUES. THE SPECIFICATIONS AND DATA ON THIS PRINT ARE BELIEVED TO BE ACCURATE AND RELIABLE. HOWEVER, IT IS THE RESPONSIBILITY OF THE PRODUCT USER TO DETERMINE THE SUITABILITY OF THE COMPONENT FOR THEIR SPECIFIC APPLICATION. WHILE DEFECTIVE PARTS WILL BE REPLACED WITHOUT CHARGE WITHIN THE PRODUCT WARRANTY PERIOD, NO LIABILITY IS ACCEPTED BEYOND SUCH REPLACEMENT.

PROPRIETARY AND CONFIDENTIAL		UNLESS OTHERWISE SPECIFIED:		NAME		DATE	MECHATRONIC TECHNIQUES INC.	
THE INFORMATION CONTAINED IN THIS DRAWING IS THE SOLE PROPERTY OF MECHATRONIC TECHNIQUES. ANY REPRODUCTION IN PART OR AS A WHOLE WITHOUT THE WRITTEN PERMISSION OF MECHATRONIC TECHNIQUES IS PROHIBITED.		DIMENSIONS ARE IN MILLIMETERS		DRAWN	TEC		TITLE:	
		TOLERANCES:		CHECKED			LT STOPPER ASSEMBLY 24	
		ANGULAR ± 0.50 DEG		ENG APPR.			SIZE	
		NO DECIMAL PLACE ± 1.500		MFG APPR.			DWG. NO.	
		ONE PLACE DECIMAL ± 0.750					C LT710310-24	
		TWO PLACE DECIMAL ± 0.381					REV	
		THREE PLACE DECIMAL ± 0.127					A	
		INTERPRET GEOMETRIC TOLERANCING PER:		COMMENTS:			SCALE: 1:1	
		MATERIAL					WEIGHT:	
		FINISH					SHEET 1 OF 1	
		APPLICATION						