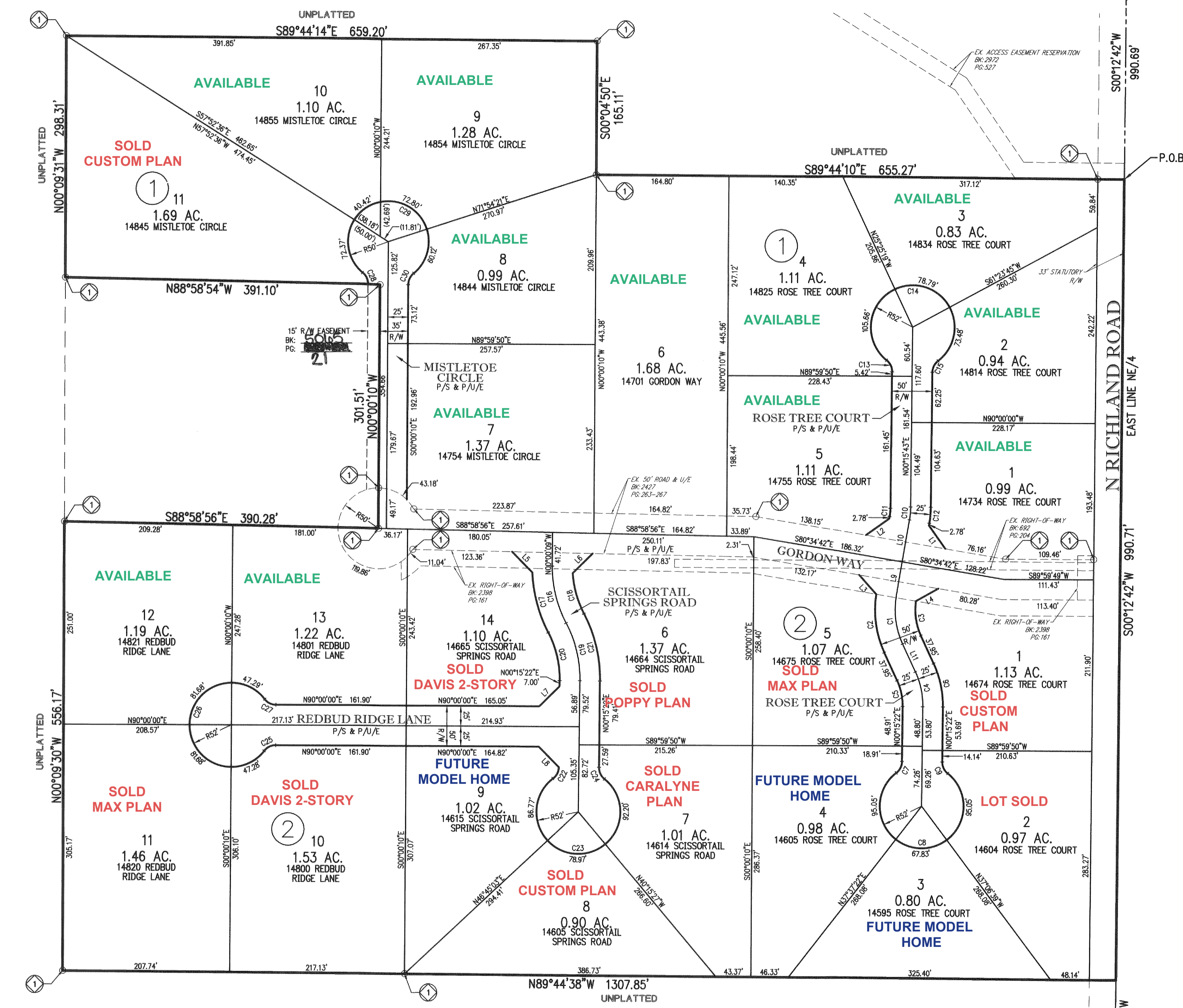
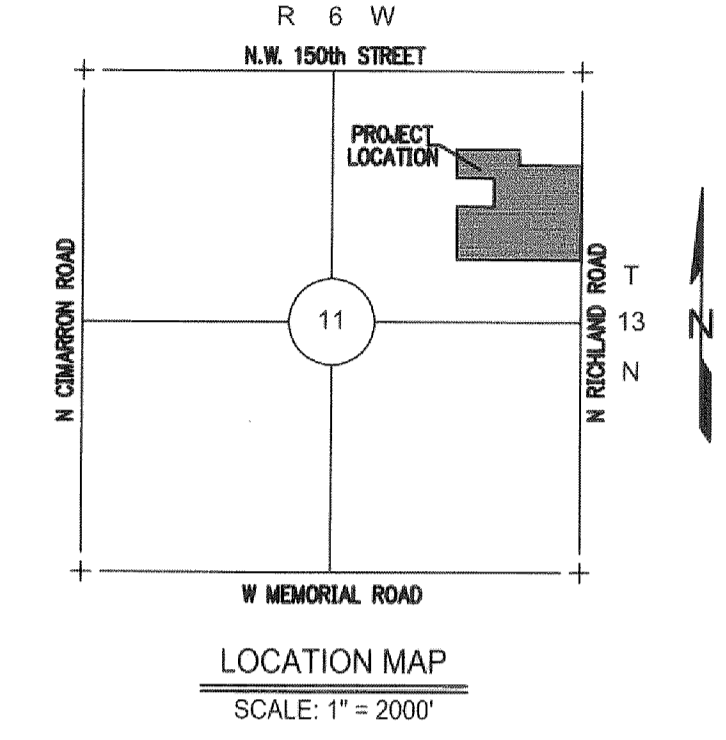
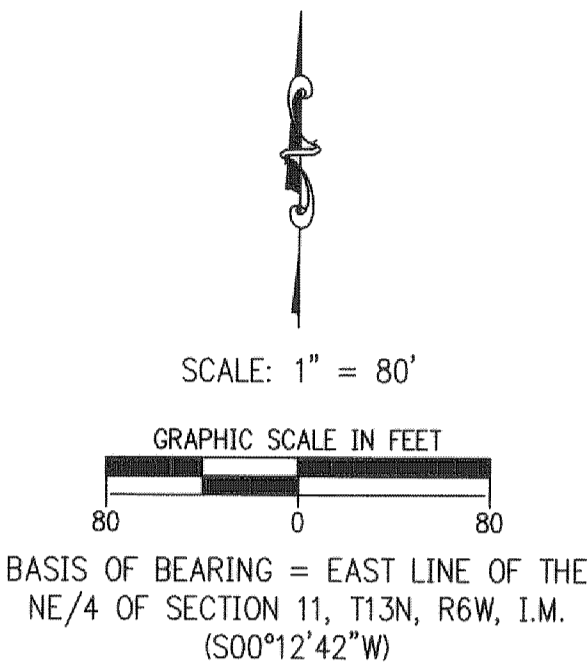


FINAL PLAT
OF
GORDON'S HOLLOW
A PART OF THE NE/4 OF SECTION 11, T13N, R6W, I.M.
CANADIAN COUNTY, OKLAHOMA

POINT OF COMMENCEMENT
NE CORNER OF NE/4 OF
SECTION 11, T13N, R6W, I.M.



CURVE TABLE

CURVE #	LENGTH	RADIUS	DELTA	CHORD DIRECTION	CHORD LENGTH
C1	60.43'	100.00'	034°37'22"	N07° 53' 23"W	59.51'
C2	73.90'	125.00'	033°52'18"	N08° 15' 56"W	72.82'
C3	43.68'	75.00'	033°22'14"	S08° 30' 57"E	43.07'
C4	44.43'	100.00'	025°27'26"	N12° 28' 21"W	44.07'
C5	33.32'	75.00'	025°27'26"	N12° 28' 21"W	33.05'
C6	55.54'	125.00'	025°27'26"	S12° 28' 21"E	55.08'
C7	16.37'	18.00'	052°06'00"	N26° 18' 22"E	15.81'
C8	257.93'	52.00'	284°12'00"	N89° 44' 38"W	63.89'
C9	16.37'	18.00'	052°06'00"	S25° 47' 38"E	15.81'
C10	15.99'	100.00'	009°09'35"	N04° 50' 30"E	15.97'
C11	11.99'	75.00'	009°09'35"	N04° 50' 30"E	11.98'
C12	19.98'	125.00'	009°09'35"	N04° 50' 30"E	19.96'
C13	16.37'	18.00'	052°06'00"	N25° 47' 17"W	15.81'
C14	257.93'	52.00'	284°12'00"	N89° 44' 17"W	63.89'
C15	16.37'	18.00'	052°06'00"	S26° 18' 43"W	15.81'

CURVE TABLE

CURVE #	LENGTH	RADIUS	DELTA	CHORD DIRECTION	CHORD LENGTH
C16	73.36'	150.00'	028°01'20"	N14° 00' 49"W	72.63'
C17	77.75'	175.00'	025°27'17"	N15° 17' 50"W	77.11'
C18	52.40'	125.00'	024°01'05"	S16° 00' 56"E	52.02'
C19	74.04'	150.00'	028°16'50"	N13° 53' 03"W	73.29'
C20	61.70'	125.00'	028°16'50"	N13° 53' 03"W	61.07'
C21	86.38'	175.00'	028°16'50"	S13° 53' 03"E	85.50'
C22	16.37'	18.00'	052°06'00"	N26° 18' 22"E	15.81'
C23	257.93'	52.00'	284°12'00"	N89° 44' 38"W	63.89'
C24	16.37'	18.00'	052°06'00"	S25° 47' 38"E	15.81'
C25	16.37'	18.00'	052°06'00"	S63° 50' 00"W	15.81'
C26	257.93'	52.00'	284°12'00"	N00° 00' 00"E	63.89'
C27	16.37'	18.00'	052°06'00"	S63° 50' 00"E	15.81'
C28	15.95'	18.00'	050°46'34"	S25° 23' 27"E	15.43'
C29	245.70'	50.00'	281°33'08"	S89° 59' 50"W	63.24'
C30	15.95'	18.00'	050°46'34"	N25° 23' 07"E	15.43'

LINE TABLE

LINE #	LENGTH	DIRECTION
L1	35.36'	N35° 34' 42"W
L2	35.36'	S54° 25' 18"W
L3	32.02'	N41° 55' 50"W
L4	32.00'	S60° 44' 30"W
L5	35.79'	N44° 41' 37"W
L6	34.82'	S45° 09' 29"W
L7	35.43'	S45° 07' 41"W
L8	35.28'	N44° 52' 19"W
L9	43.37'	N09° 25' 18"E
L10	52.80'	N09° 25' 03"E
L11	37.95'	S25° 12' 05"E

ADDRESSES

Any addresses shown on this plat were accurate at the time this plat was filed. Addresses are subject to change and should never be relied upon in place of legal description.

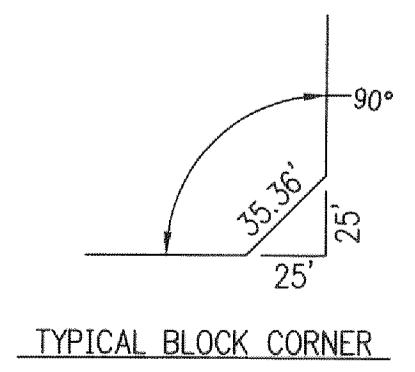
NOTES

- This plat of survey meets the Oklahoma Minimum Standards for the Practice of Land Surveying as adopted by the Oklahoma State Board of Licensure for Professional Engineers and Land Surveyors and that said Final Plat complies with the requirements of Title 11, Section 41-108 of the Oklahoma State Statutes.
- Monuments shall be as follows:
Magnetic Nail with Washer stamped "CTA CA973" for all Paved Surfaces or
3/8" Iron Rod with a Plastic Cap stamped "CTA CA973"
- Maintenance of the Common Areas and Islands/Medians in Public Rights-of-Way shall be the responsibility of the Property Owners and/or Property Owners Association. No structures, storage of material, grading, fill, or other obstructions, either temporary or permanent shall be placed within the drainage related common areas and/or drainage areas shown. Certain amenities such as, but not limited to, walks, benches, piers, and docks, shall be permitted if installed in a manner to meet the requirements specified above.

LEGEND

P.O.B.	POINT OF BEGINNING
EX.	EXISTING
R/W	RIGHT-OF-WAY
BL	BUILDING LIMIT LINE
U/E	UTILITY EASEMENT
(NR)	NONRADIAL LINE
PS & P/U/E	PRIVATE STREET AND PUBLIC UTILITY EASEMENT
Ⓢ	FOUND 3/8" IRON PIN

SE CORNER OF NE/4 OF SECTION 11, T13N, R6W, I.M.



FINAL PLAT
GORDON'S HOLLOW

300 Pointe Parkway Blvd.
Yukon, Oklahoma 73099

Crafton Tull
architecture | engineering | surveying
405.787.6270 | 405.787.6276 | www.craftontull.com

SHEET NO.: 2 OF 2
DATE: 04/13/20
PROJECT NO.: 18617400

DRAWING: 18617400 - GORDON'S HOLLOW - FINAL PLAT - 04/13/20
PRINTED: May 12, 2020 10:00 AM