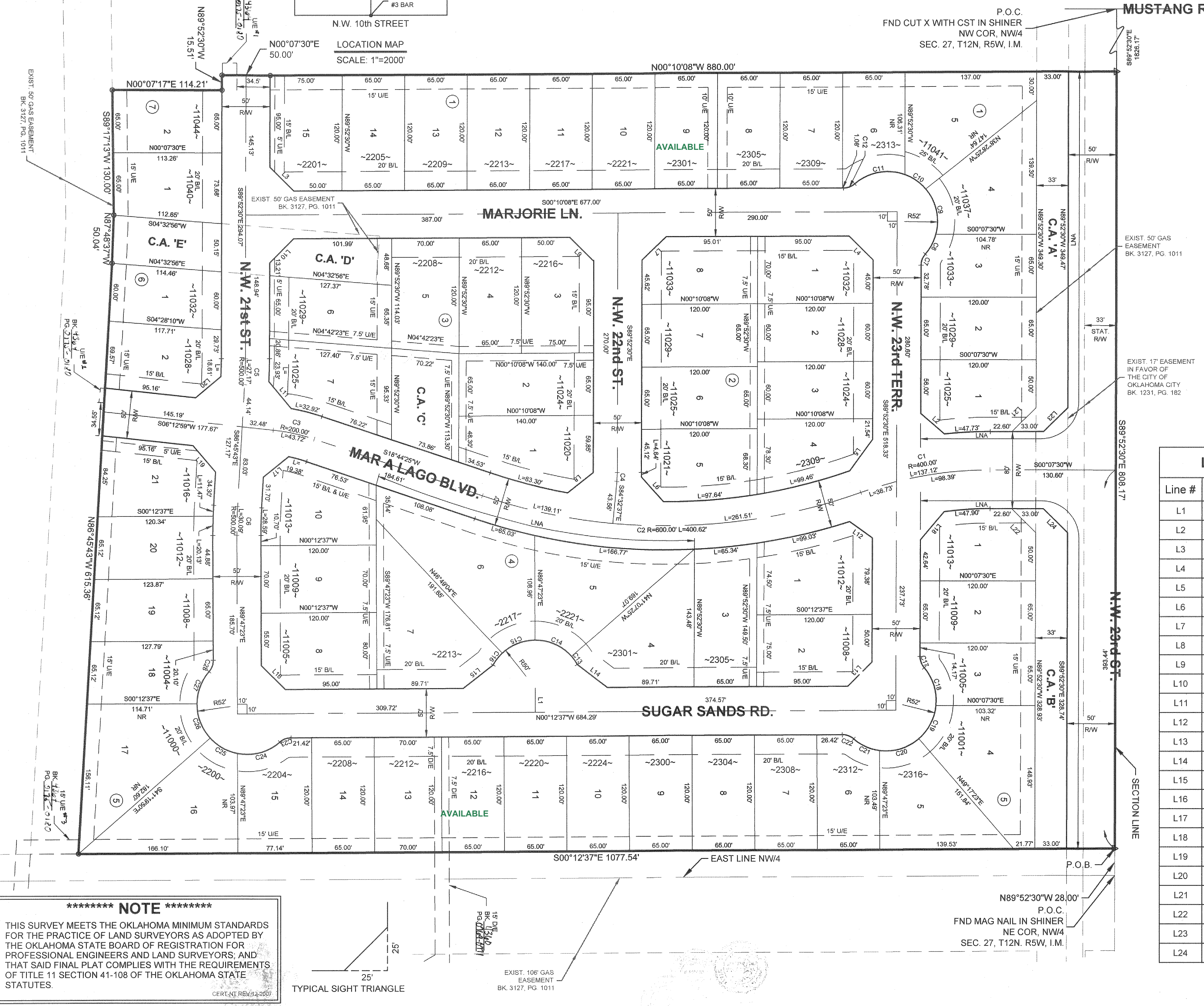
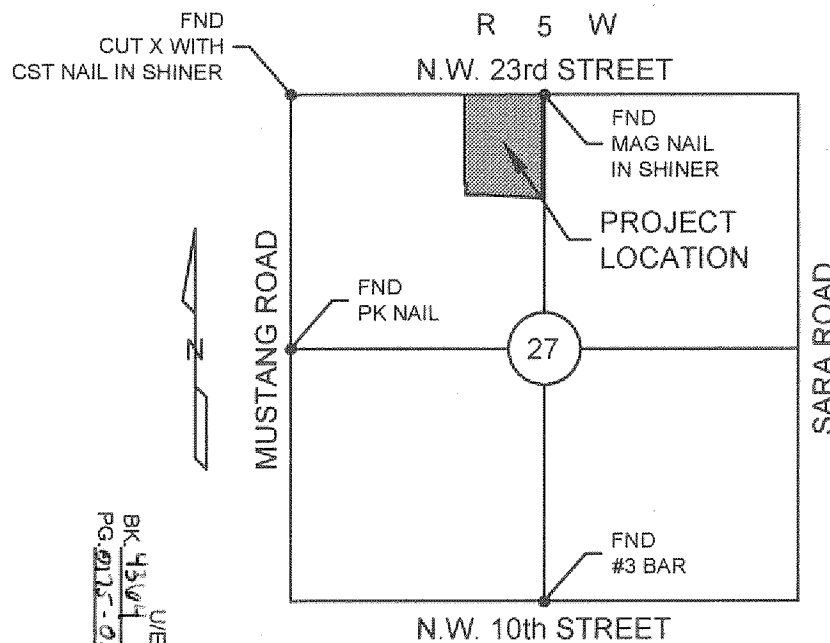
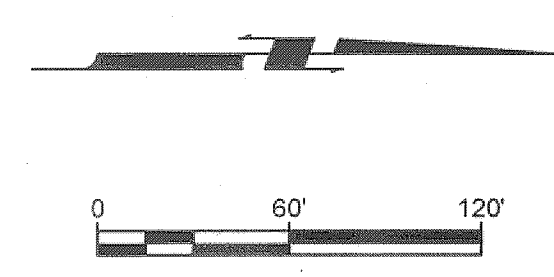


# FINAL PLAT of MAR A LAGO SECTION 1

BEING A PART OF THE NW/4, SEC. 27, T12N, R5W, I.M.  
AN ADDITION TO THE CITY OF OKLAHOMA CITY, CANADIAN COUNTY, OKLAHOMA



Curve Table						
Curve #	Length	Radius	Tangent	Chord Length	Chord Direction	Delta
C1	137.12'	400.00'	69.24'	136.45'	S09°41'45"E	019°38'29"
C2	400.62'	600.00'	208.10'	393.22'	N00°23'17"W	038°15'24"
C3	43.72'	200.00'	21.95'	43.63'	S12°28'42"W	012°31'26"
C4	9.31'	100.00'	4.66'	9.30'	N87°12'34"W	005°19'53"
C5	27.17'	500.00'	13.59'	27.16'	N88°19'06"W	003°06'47"
C6	30.09'	500.00'	15.05'	30.09'	S88°29'10"E	003°26'54"
C7	12.81'	18.00'	6.69'	12.54'	S69°28'53"E	040°47'14"
C8	23.36'	52.00'	11.88'	23.16'	N61°57'21"W	025°44'09"
C9	50.31'	52.00'	27.32'	48.37'	S77°27'38"W	055°25'54"
C10	26.64'	52.00'	13.62'	26.35'	S35°04'04"W	029°21'14"
C11	55.68'	52.00'	30.84'	53.05'	S10°16'58"E	061°20'48"
C12	12.81'	18.00'	6.69'	12.54'	N20°33'45"W	040°47'14"
C13	10.44'	50.00'	5.24'	10.42'	S54°51'20"W	011°57'30"
C14	42.84'	50.00'	22.83'	41.54'	S24°19'59"W	049°05'12"
C15	37.50'	50.00'	19.68'	36.63'	S21°41'46"E	042°58'19"
C16	15.77'	50.00'	7.95'	15.71'	S52°13'07"E	018°04'23"
C17	12.79'	18.00'	6.68'	12.52'	N69°46'05"E	040°42'51"
C18	42.13'	52.00'	22.30'	40.98'	S72°37'09"W	046°25'00"
C19	39.45'	52.00'	20.73'	38.51'	N62°26'29"W	043°27'44"
C20	43.92'	52.00'	23.37'	42.63'	N16°30'44"W	048°23'48"
C21	29.85'	52.00'	15.35'	29.44'	N24°07'53"E	032°53'26"
C22	12.81'	18.00'	6.69'	12.54'	S20°11'00"W	040°47'13"
C23	12.81'	18.00'	6.69'	12.54'	S20°36'13"E	051°52'28"
C24	47.08'	52.00'	25.29'	45.49'	N15°03'36"W	051°52'28"
C25	33.34'	52.00'	17.27'	32.77'	N29°14'46"E	036°44'16"
C26	39.10'	52.00'	20.53'	38.19'	N69°09'28"E	043°05'08"
C27	36.19'	52.00'	18.86'	35.46'	N69°21'40"E	039°52'34"
C28	12.81'	18.00'	6.69'	12.54'	N69°49'00"W	040°47'13"

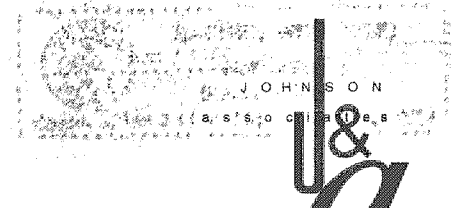
Line Table		
Line #	Length	Direction
L1	25.00'	N89°47'23"E
L2	32.85'	S41°12'12"W
L3	35.26'	S44°58'41"W
L4	35.26'	S44°58'41"W
L5	40.49'	S53°56'36"E
L6	34.33'	S48°21'50"W
L7	35.01'	N44°19'00"W
L8	33.95'	S38°02'54"E
L9	35.26'	N44°58'41"E
L10	35.45'	S45°01'19"E
L11	36.68'	N50°22'38"E
L12	29.11'	N35°44'12"E
L13	35.46'	N45°02'33"W
L14	39.53'	S37°33'04"W
L15	39.53'	N37°58'17"W
L16	35.36'	N44°47'23"E
L17	33.68'	S39°06'27"E
L18	38.19'	S49°40'53"E
L19	36.26'	S49°43'38"W
L20	34.39'	N40°20'07"W
L21	35.36'	S44°52'30"E
L22	35.36'	S45°07'30"W
L23	35.36'	S44°52'30"E
L24	35.36'	N45°07'30"E

- NOTES:**
- All islands/medians within street rights-of-way, and arterial landscaping with its irrigation system, shall be maintained by the Property Owners Association within MAR A LAGO SECTION 1.
  - Maintenance of all common areas and private drainage easements within MAR A LAGO SECTION 1 shall be the responsibility of the Property Owners Association. No structures, storage of material, grading, fill, or other obstructions, including fences, either temporary or permanent, that may cause a blockage of flow or an adverse effect on the functioning of the storm water facility, shall be placed within the common areas intended for the use of conveyance of storm water, and/or drainage easements shown. Certain amenities such as, but not limited to, walks, benches, piers, and docks, shall be permitted if installed in a manner to meet the requirements specified above.
  - A sidewalk shall be required on each lot where it fronts a local and/or collector street. The sidewalk will be required at the building permit stage and installed prior to the issuance of an Occupancy Certificate by the City of Oklahoma City. Sidewalks shall also be required on the backs of lots 5 & 6 Block 4 along Mar A Lago Blvd at the building permit stage of these lots.
  - Either one 3-inch caliper deciduous tree or two 1½-inch caliper deciduous trees shall be planted in the front yard of all lots where the garage extends beyond the front wall of a residence, towards the street right of way.

**LEGEND:**

- DENOTES FND. #3 BAR w/CAP STAMPED "J&A 1484" UNLESS OTHERWISE NOTED
- DENOTES SET #3 BAR w/CAP STAMPED "J&A 1484" UNLESS OTHERWISE NOTED
- DENOTES NOT RADIAL
- BL = BUILDING LIMIT LINE
- D & U/E = DRAINAGE & UTILITY EASEMENT
- U/E = UTILITY EASEMENT
- J&A = DRAINAGE EASEMENT
- L.N.A. = LIMITS OF NO ACCESS
- C.A. = COMMON AREA

## FINAL PLAT of MAR A LAGO SECTION 1

  
**Johnson & Associates, Inc.**  
 1 E. Sheridan Ave., Suite 200  
 Oklahoma City, OK 73104  
 (405) 235-8075 FAX (405) 235-8078  
 Certificate of Authorization #1484 Exp. Date: 06-30-2017  
 ENGINEERS • SURVEYORS • PLANNERS