

LINE #	LENGTH	DIRECTION
L1	100.00'	S89°37'26"W
L2	100.00'	N89°37'26"W
L4	101.98'	S50°47'04"E
L5	28.67'	S62°05'39"E
L6	35.19'	N45°06'29"E
L7	35.62'	S44°53'31"E
L8	37.93'	S40°30'15"W
L9	34.32'	N46°48'28"W
L10	35.36'	N44°50'24"E
L11	35.36'	S45°09'36"E
L12	35.36'	S44°50'24"W
L13	40.85'	S88°50'24"W

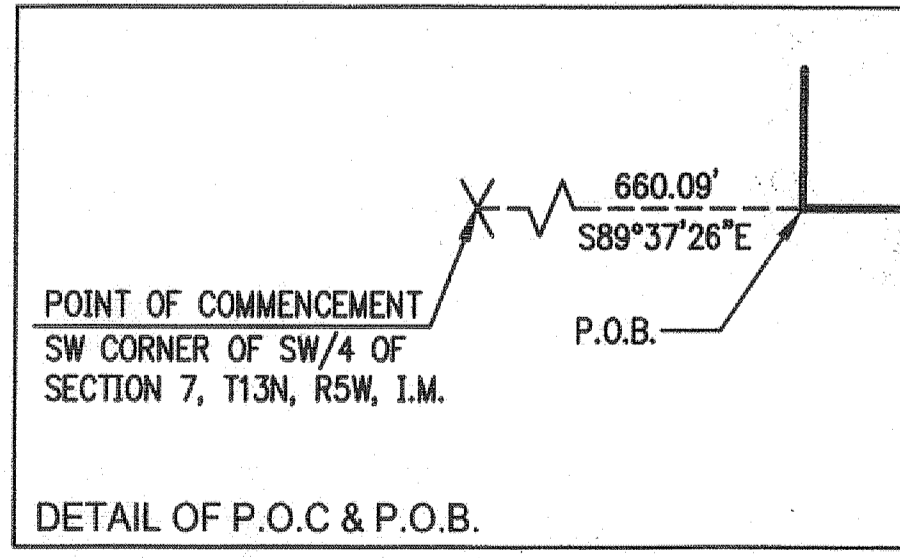
CURVE #	LENGTH	RADIUS	DELTA	CHORD DIRECTION	CHORD LENGTH
C1	1078.67'	1880.00'	33°13'40"	S44°25'16"W	1063.82'
C2	39.01'	63.00'	28°55'45"	S13°18'17"W	38.65'
C3	39.01'	63.00'	28°55'45"	N13°18'17"E	38.65'
C4	225.51'	500.00'	25°50'31"	S12°45'40"W	223.61'
C5	239.04'	530.00'	25°50'31"	S12°45'40"W	237.02'
C6	211.88'	470.00'	25°50'31"	N12°45'40"E	210.19'
C7	225.51'	500.00'	25°50'31"	S12°45'40"W	223.61'
C8	211.88'	470.00'	25°50'31"	N12°45'40"E	210.19'
C9	239.04'	530.00'	25°50'31"	N12°45'40"E	237.02'
C10	175.71'	300.00'	33°33'26"	S16°56'19"E	173.21'
C11	198.14'	270.00'	33°33'26"	N16°56'19"W	195.88'
C12	193.28'	330.00'	33°33'26"	N16°56'19"W	190.53'
C13	175.71'	300.00'	33°33'26"	S16°56'19"E	173.21'
C14	193.28'	330.00'	33°33'26"	S16°56'19"E	190.53'
C15	198.14'	270.00'	33°33'26"	N16°56'19"W	195.88'
C16	23.13'	35.00'	37°51'49"	N19°05'30"W	22.71'
C17	173.55'	80.00'	165°43'38"	S44°50'24"W	119.07'
C18	23.13'	35.00'	37°51'49"	S71°13'41"E	22.71'
C19	28.67'	35.00'	46°49'35"	N66°25'37"E	27.82'
C20	286.57'	60.00'	273°39'10"	N00°09'36"W	82.11'
C21	28.67'	35.00'	46°49'35"	N66°44'48"W	27.82'
C22	93.22'	200.00'	26°42'24"	S13°11'36"W	92.38'
C23	79.24'	170.00'	26°42'24"	S13°11'36"W	78.52'
C24	107.21'	230.00'	26°42'24"	N13°11'36"E	106.24'
C25	194.88'	500.00'	22°19'54"	S37°42'45"W	193.65'
C26	183.19'	470.00'	22°19'54"	S37°42'45"W	182.03'
C27	206.57'	530.00'	22°19'54"	N37°42'46"E	205.27'
C28	194.88'	500.00'	22°19'54"	S37°42'45"W	193.65'
C29	206.57'	530.00'	22°19'54"	S37°42'45"W	205.27'
C30	183.19'	470.00'	22°19'54"	S37°42'45"W	182.03'

CURVE #	LENGTH	RADIUS	DELTA	CHORD DIRECTION	CHORD LENGTH
C31	112.76'	250.00'	25°50'31"	S13°37'32"W	111.80'
C32	126.29'	280.00'	25°50'31"	S13°37'32"W	125.22'
C33	99.23'	220.00'	25°50'31"	S13°37'32"W	98.39'
C34	112.76'	250.00'	25°50'31"	S13°37'32"W	111.80'
C35	99.23'	220.00'	25°50'31"	S13°37'32"W	98.39'
C36	126.29'	280.00'	25°50'31"	N13°37'32"E	125.22'
C37	641.06'	1560.00'	23°32'42"	S39°41'44"W	636.56'
C38	628.37'	1530.00'	23°31'53"	S38°42'08"W	623.97'
C39	653.75'	1590.00'	23°33'29"	N39°41'20"E	648.16'
C40	66.97'	100.00'	38°22'20"	S70°39'14"W	65.73'
C41	32.67'	70.00'	26°44'31"	S64°50'20"W	32.38'
C42	54.87'	130.00'	24°10'57"	N63°33'33"E	54.46'

LINE #	LENGTH	DIRECTION
E1	134.98'	N47°38'41"E
E2	151.50'	S00°09'36"E
E3	138.07'	S23°06'10"E
E4	188.90'	S52°38'25"E

LEGEND

BL BUILDING LIMIT LINE
 D/E PRIVATE DRAINAGE EASEMENT
 EX. EXISTING
 L.N.A. LIMITS OF NO ACCESS
 (NR) NONRADIAL LINE
 P.O.B. POINT OF BEGINNING
 R.O.W. RIGHT-OF-WAY
 U/E UTILITY EASEMENT
 STAT. STATUTORY



FINAL PLAT TO SERVE
 TIMBER RIDGE ESTATES

214 E. Main
 Oklahoma City, Oklahoma 73104

Crafton Tull
 architecture | engineering | surveying

405.787.6270 | 405.787.6271
 www.craftontull.com

SHEET NO.: 2 OF 2
 DATE: 08/30/16
 PROJECT NO.: 15606800

PD-2497

FINAL PLAT
 OF
**TIMBER RIDGE
 ESTATES**

A PART OF THE SW/4 OF SECTION 7, T13N, R5W, I.M.
 OKLAHOMA CITY, CANADIAN COUNTY, OKLAHOMA

