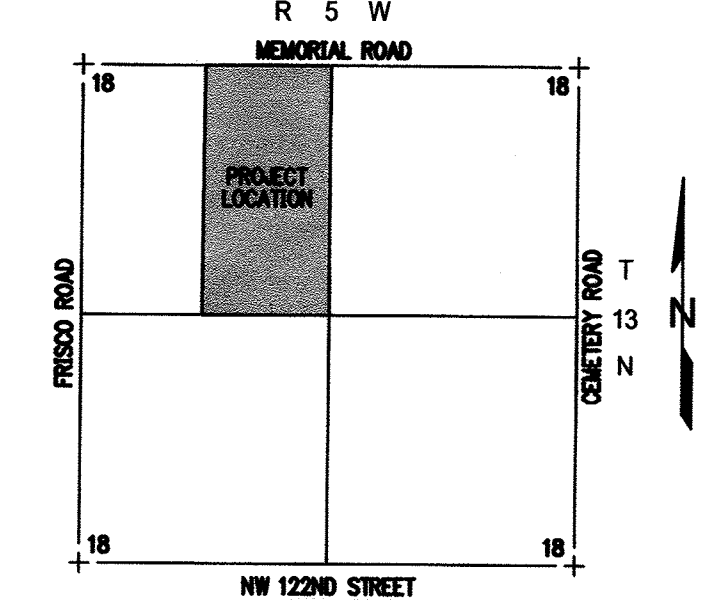


FINAL PLAT
OF
**THE LAKES AT
TIMBER RIDGE**
A PART OF THE NW/4 OF SECTION 18,
T13N, R5W, I.M., OKLAHOMA CITY,
CANADIAN COUNTY, OKLAHOMA



SCALE: 1" = 2000'
SCALE: 1" = 100'
GRAPHIC SCALE IN FEET
BASIS OF BEARING = NORTH LINE OF THE
NW/4 OF SECTION 18, T13N, R5W, I.M.
(S89°37'27"E)

LEGEND

BL	BUILDING LIMIT LINE
D/E	DRAINAGE EASEMENT
EX.	EXISTING
L.N.A.	LIMITS OF NO ACCESS
(NR)	NONRADIAL LINE
P.O.B.	POINT OF BEGINNING
R/W	RIGHT-OF-WAY
U/E	UTILITY EASEMENT
P/D/E	PRIVATE DRAINAGE EASEMENT

ADDRESSES

Any addresses shown on this plat were accurate at the time this plat was filed. Addresses are subject to change and should never be relied upon in place of legal description.

NOTES

- This plat of survey meets the Oklahoma Minimum Standards for the Practice of Land Surveying as adopted by the Oklahoma State Board of Licensure for Professional Engineers and Land Surveyors and that said Final Plat complies with the requirements of Title 11, Section 41-108 of the Oklahoma State Statutes.
- Monuments shall be as follows:
Magnetic Nail with Washer stamped "CTA CA973" for all Paved Surfaces or
3/8" Iron Rod with a Plastic Cap stamped "CTA CA973"
- Maintenance of the Private Drainage Easements and Islands/Medians in Public Rights-of-Way shall be the responsibility of the Property Owners and/or Property Owners Association. No structures, storage of material, grading, fill, or other obstructions, either temporary or permanent shall be placed within the drainage related common areas and/or drainage areas shown. Certain amenities such as, but not limited to, walks, benches, piers, and docks, shall be permitted if installed in a manner to meet the requirements specified above.

FINAL PLAT
THE LAKES AT TIMBER RIDGE

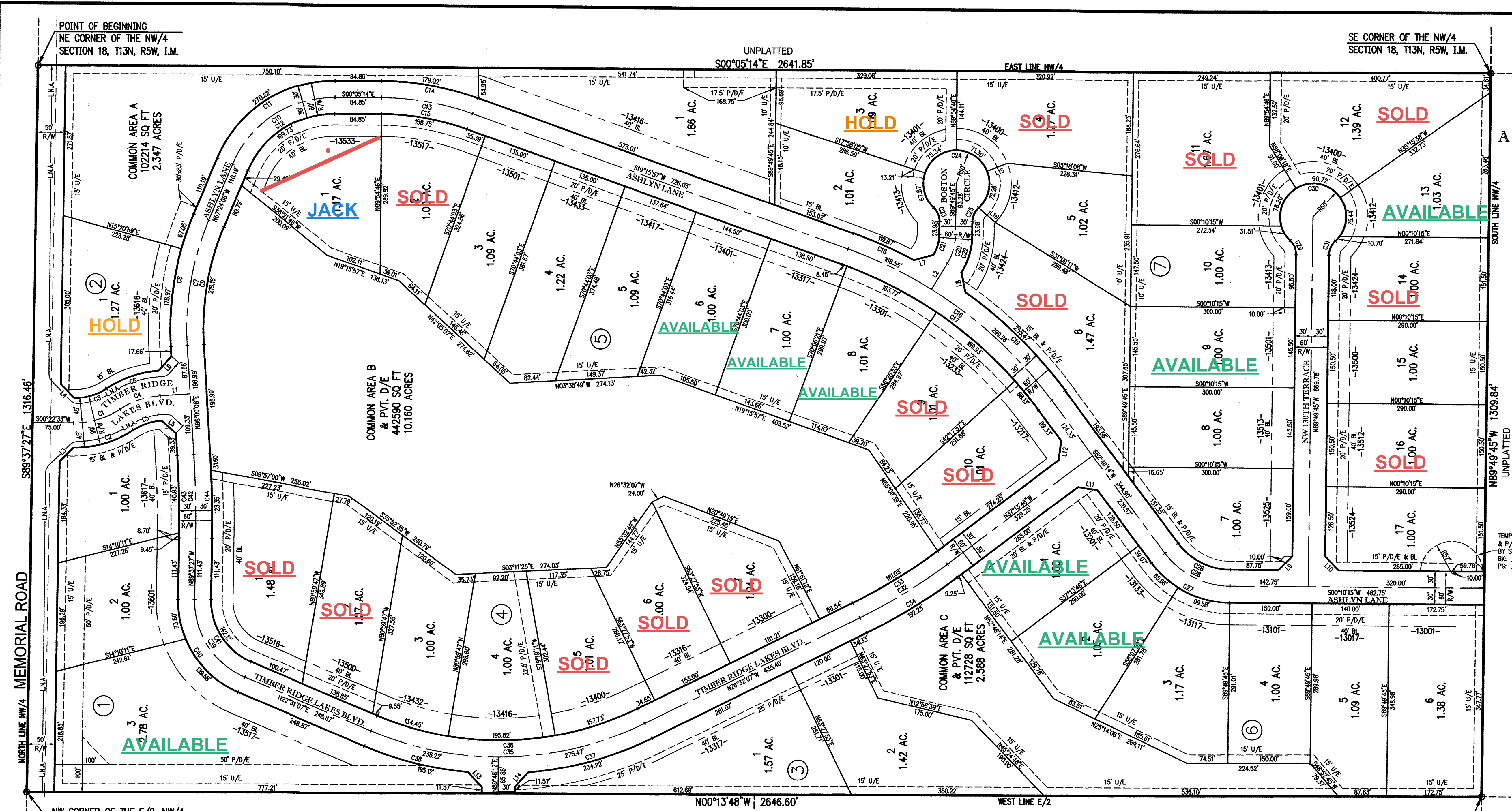
300 Pointe Parkway Blvd.
Yukon, Oklahoma 73099

Crafton Tull
architecture | engineering | surveying
405.787.4271 405.787.4276
www.craftontull.com

SHEET NO.: 2 OF 2
DATE: 09/30/20
PROJECT NO.: 17611600

CERTIFICATE OF AUTHORIZATION
CA 923 (PEAS) EXPRESS 6/07/2022

PD-2717



LINE TABLE

LINE #	LENGTH	DIRECTION
L1	55.00'	S03°59'52"E
L2	55.00'	S58°39'44"E
L3	35.36'	S44°37'27"E
L4	35.36'	S45°22'33"W
L5	35.36'	N41°00'08"E
L6	35.36'	N48°59'52"W
L7	36.64'	S15°42'49"E
L8	36.64'	N78°23'20"E
L9	35.36'	S44°49'45"E
L10	35.36'	N45°10'15"E
L11	35.36'	S07°46'14"W
L12	35.36'	N82°13'46"W
L13	36.53'	S46°42'11"W
L14	36.53'	N47°09'48"W
L15	40.00'	N22°00'11"W
L16	40.17'	N40°10'15"E

CURVE TABLE

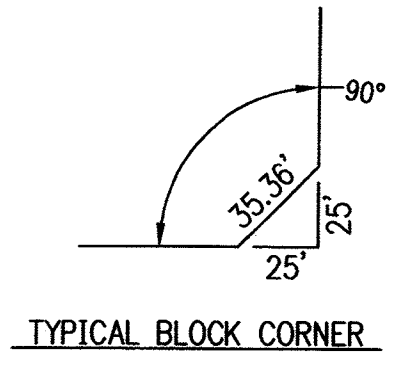
CURVE #	LENGTH	RADIUS	DELTA	CHORD DIRECTION	CHORD LENGTH
C1	88.82'	150.00'	033°55'35"	S16°35'14"E	87.53'
C2	115.46'	195.00'	033°55'35"	S16°35'14"E	113.79'
C3	62.17'	105.00'	033°55'35"	S16°35'14"E	61.27'
C4	77.37'	150.00'	029°33'10"	S18°46'27"E	76.51'
C5	54.16'	105.00'	029°33'10"	N18°46'27"W	53.56'
C6	100.58'	195.00'	029°33'10"	N18°46'27"W	99.47'
C7	232.09'	500.00'	026°35'44"	N80°42'00"W	230.01'
C8	246.02'	530.00'	026°35'44"	N80°42'00"W	243.81'
C9	218.16'	470.00'	026°35'44"	N80°42'00"W	216.21'
C10	234.97'	200.00'	067°18'54"	N33°44'41"W	221.69'
C11	270.22'	230.00'	067°18'54"	N33°44'41"W	254.94'
C12	199.73'	170.00'	067°18'54"	N33°44'41"W	188.44'
C13	168.89'	500.00'	019°21'11"	N09°35'21"E	168.09'
C14	179.02'	530.00'	019°21'11"	N09°35'21"E	178.17'
C15	158.75'	470.00'	019°21'11"	N09°35'21"E	158.00'

CURVE TABLE

CURVE #	LENGTH	RADIUS	DELTA	CHORD DIRECTION	CHORD LENGTH
C16	467.81'	800.00'	033°30'17"	N36°01'05"E	461.18'
C17	450.27'	770.00'	033°30'17"	N36°01'05"E	443.88'
C18	119.87'	830.00'	008°16'29"	N23°24'11"E	119.76'
C19	255.47'	830.00'	017°38'08"	N43°57'10"E	254.47'
C20	54.40'	100.00'	031°10'01"	N74°14'45"W	53.73'
C21	38.08'	70.00'	031°10'01"	S74°14'45"E	37.61'
C22	70.72'	130.00'	031°10'01"	S74°14'45"E	69.85'
C23	28.60'	35.00'	046°49'35"	N66°45'27"E	27.82'
C24	286.57'	60.00'	273°39'10"	N00°10'15"E	82.11'
C25	28.60'	35.00'	046°49'35"	N66°24'58"W	27.82'
C26	137.71'	150.00'	052°35'59"	S26°28'14"W	132.92'
C27	165.25'	180.00'	052°35'59"	S26°28'14"W	159.51'
C28	110.16'	120.00'	052°35'59"	S26°28'14"W	106.34'
C29	28.60'	35.00'	046°49'35"	N66°45'27"E	27.82'
C30	286.57'	60.00'	273°39'10"	N00°10'15"E	82.11'

CURVE TABLE

CURVE #	LENGTH	RADIUS	DELTA	CHORD DIRECTION	CHORD LENGTH
C31	28.60'	35.00'	046°49'35"	N66°24'58"W	27.82'
C32	186.65'	1000.00'	010°41'39"	S31°52'56"E	186.38'
C33	181.05'	970.00'	010°41'39"	S31°52'56"E	180.79'
C34	192.25'	1030.00'	010°41'39"	S31°52'56"E	191.97'
C35	513.69'	600.00'	049°03'14"	S02°00'30"E	498.15'
C36	488.01'	570.00'	049°03'14"	S02°00'30"E	473.24'
C37	234.23'	630.00'	021°18'07"	S15°53'03"E	232.88'
C38	195.12'	630.00'	017°44'44"	S13°38'45"W	194.34'
C39	177.65'	150.00'	067°51'26"	S56°26'50"W	167.45'
C40	213.18'	180.00'	067°51'26"	S56°26'50"W	200.94'
C41	142.12'	120.00'	067°51'26"	S56°26'50"W	132.96'
C42	152.67'	2000.00'	004°22'25"	N88°11'21"E	152.63'
C43	150.38'	1970.00'	004°22'25"	N88°11'21"E	150.34'
C44	154.96'	2030.00'	004°22'25"	N88°11'21"E	154.92'



DRAWING CONTAINS UNPLATTED INFORMATION. ORIGINAL PLAT IS THE SOURCE OF THIS INFORMATION.