

# Global Megatrends & their Impact on New Zealand



Changing Global Population



Changing Nature of Work



Changing Attitudes & Behaviours



Changing Climate

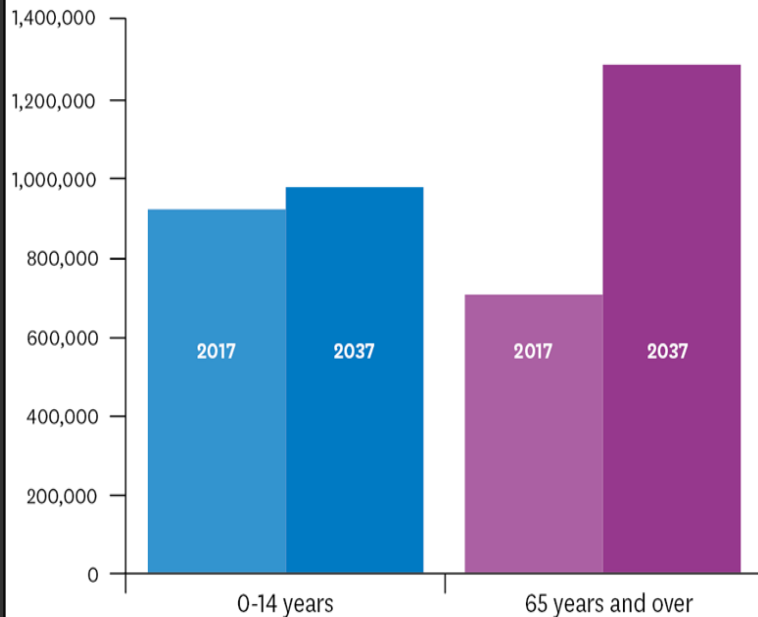
Clive Jones

+64 21 462 524

clive@metamorphosis.digital

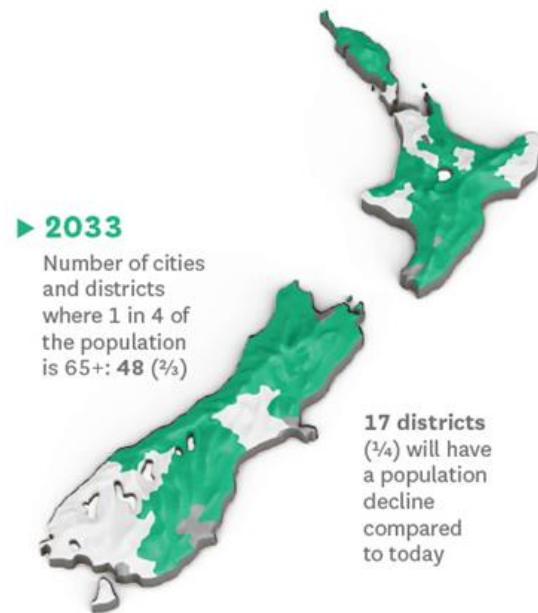
www.metamorphosis.digital

**Our Ageing Population:** By 2036 around one in 4.5 kiwis will be aged 65 plus

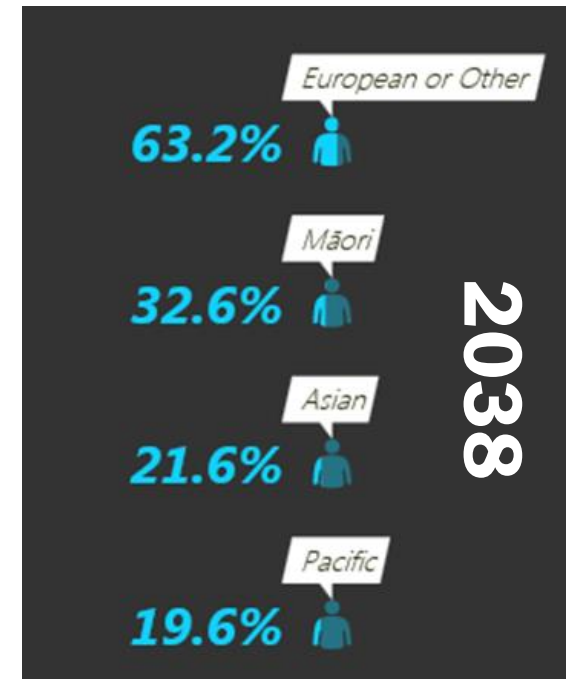


**Regional Ageing & Population decline:**

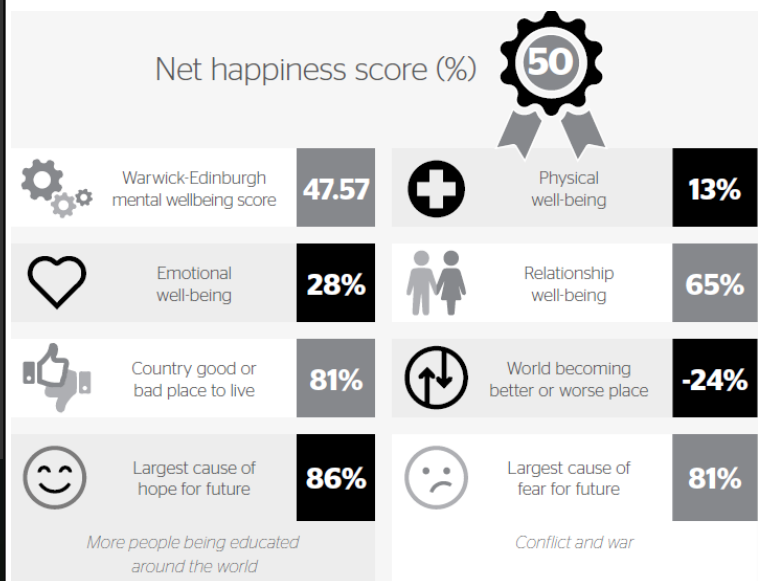
Our regions are ageing faster than many of our cities with two-thirds having more over 65's and less young people



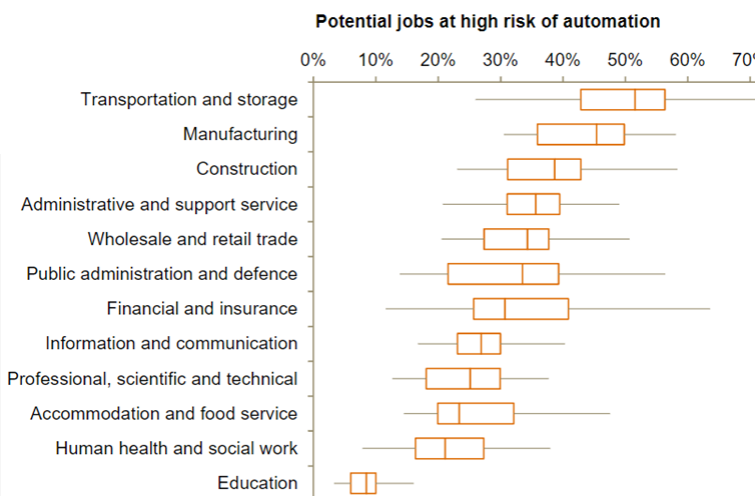
**Increasing Cultural Diversity:** By 2038 the number of Maori, Pasifika, and Asian children aged 0-14 will increase 34% over 2013



**The overall happiness and wellbeing of our young people is among the lowest in the world**



**885,000 jobs are at 'High Risk' of automation over the next 20 years**



source: PLAAC data, PwC analysis

**but the impact on individual sectors and job types will be highly variable**

**Climate Change is already affecting New Zealand**

