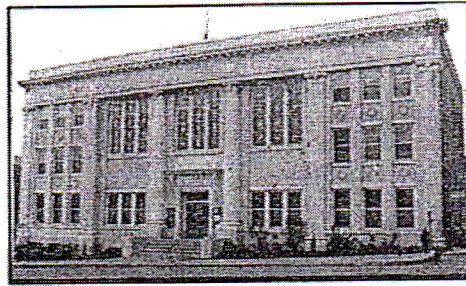


Board of
County Commissioners
245-2234

Clerk District Court
Auditor and Recorder
245-3212

Treasurer and
Tax Collector
245-2421



Prosecuting Attorney
245-2564

Assessor
245-2821

Sheriff
245-2555

Coroner
245-2611

County of Benewah
701 W. College Avenue
St. Maries, Idaho 83861

October 27, 2014

Faye L. Krueger
Regional Forester
Federal Building
200 East Broadway
PO Box 7669
Missoula MT 59807-7669

Ms. Faye Krueger:

This letter is to inform you that Benewah County Commissioners will not be meeting with you on November 6th or 7th at your office in Coeur d'Alene, Idaho. At this time we are not prepared to meet with you to discuss the IPNF plan.

In your letter dated October 14, 2014 to the Shoshone County Commissioners you stated the purpose of these meetings is "to hear our concerns directly, to describe how the county's land use plans have been incorporated into the development of the revised plan, and to discuss opportunities for us to move forward together in the management of our National Forests".

While we appreciate your desire to hear our concerns directly you did attend the Objections hearings in Coeur d'Alene with Mr. James Pena and heard the concerns of local governments on the current proposed IPNF/ KNF revised plan.

Despite numerous letters outlining our concerns for over eight years and many attempts throughout the process to have meaningful input on the revised current forest plan,, local governments have been largely ignored and regarded as the general public for comment only, not as a governing jurisdictional entity. Although the USFS is required by law to engage local governments in the forest planning process, via the coordination process, your office has chosen not to do so. Benewah County has had a natural resource plan in effect since 2009. Your office was sent a copy of our land use plan in 2009 and over the years received many requests to respond to our concerns in the development of the revised forest plan, all of those opportunities to sit down with us and have meaningful discussions on the issues that are of concern to us, via coordination was ignored. Consequently, we are unable to discuss how our land use plans have been incorporated into the development of the revised plan.

It is hard to find a path to move forward at this point, if the issue for you is to simply move forward in the implementation of the current revised plan which will have a severe negative impact on the economy that supports rural communities, the safety, health and welfare, and the custom, heritage, and culture of the citizens that reside within or around the national forest lands in Region One from continued forest mismanagement.

We are working with a coalition of multi-jurisdictional governments, NGO's and other elected officials from Idaho and Montana to find ways to move forward to protect our citizens and the region's economy. We welcome the opportunity to have meaningful discussions with forest managers that result in substantive results that resolve the negative impacts that current and proposed forest management is having on the communities in Region One.

Currently we are waiting on the information from various FOIA requests from Region One and the Washington D.C. office's and a response to the Mullan school district from Greg Smith for clarification of his letter to the counties dated September 8, 2014. Once we all have had time to evaluate the information from those documents, we will be in touch with you to invite you to a meeting in which we can discuss some of these issues you wish to address.

The meeting with you on these issues will be with the coalition members at a location that works best for the majority of the coalition members, most likely it will be held in St. Maries.

We are sure that we can give you enough lead time that you can clear your schedule and come to the location that is chosen to meet with all of us.

Sincerely,


Jack A. Buell, Chairman


N.L. "Bud" McCall


Philip B. Lampert

CC: Senator Jim Risch
Senator Mike Crapo
Representative Raul Labrador
Representative Mike Simpson
Bonner County Commissioners
Boundary County Commissioners
Kootenai County Commissioners
Kootenai County Natural Resource Team
Shoshone County Commissioners
Shoshone County Natural Resource Coordinator
Glenlake Irrigation District, Eureka MT
Senator Jennifer Fielder, MT State Legislature
Sanders County Natural Resource Council
Representative Kerry White - MT State legislature