

West Escudilla Restoration Project

Presentation for Apache County
Board of Supervisors

20Oct15

West Escudilla Restoration Project

- The project area is located to the north, east and southeast of Escudilla Mountain.
- 68,559 acres in the project proposal.
- Approximately 66,000 acres of National Forest System managed lands.
- Approximately 2,400 acres of private, state and county ownership.

West Escudilla Restoration Project

- The purpose of this project is to improve or restore ecological function and resilience and move the project area toward Forest Plan desired conditions.
- Proposed activities include vegetation treatments along with prescribed fire, aquatic, and watershed activities on approximately 66,000 acres.

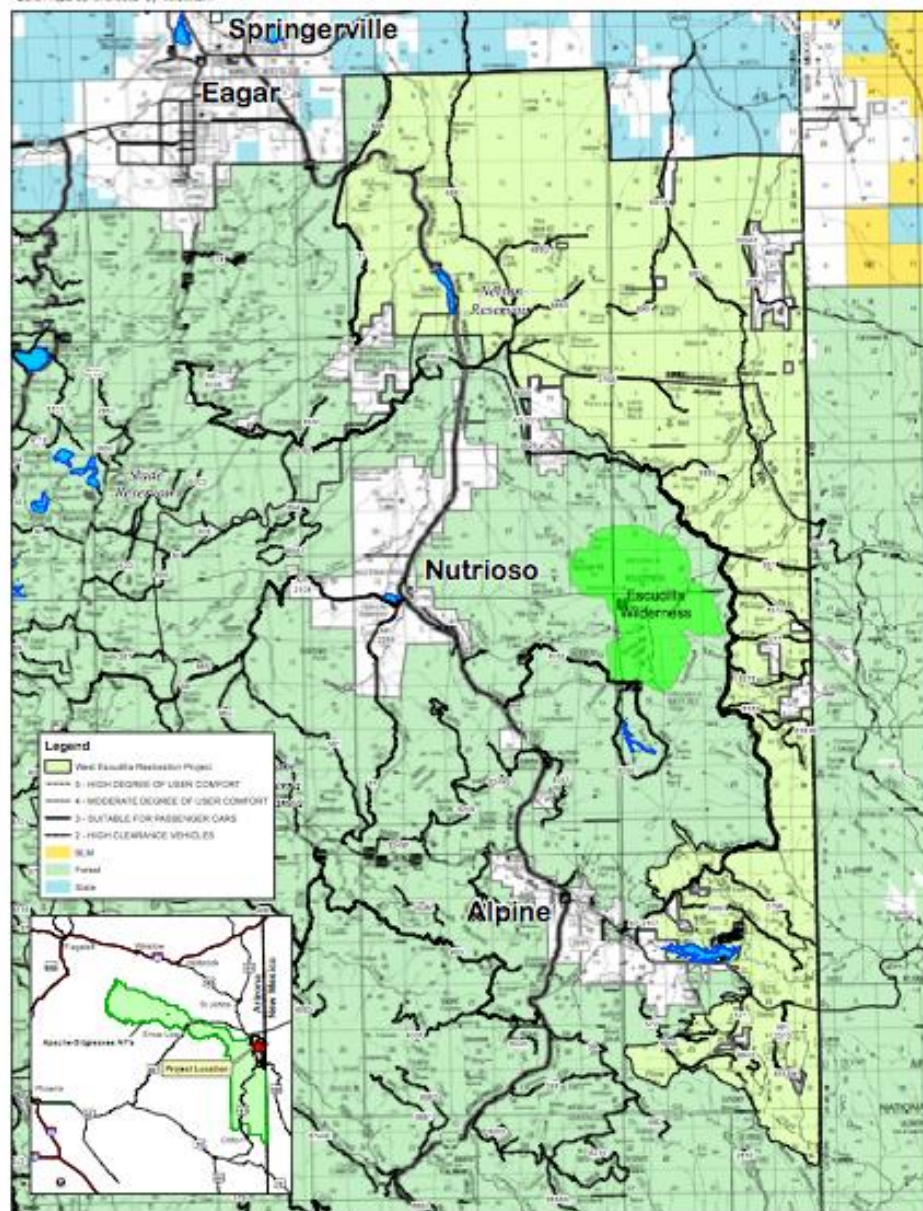
West Escudilla Analysis Area
Alpine R.D.
Apache-Sitgreaves N.F.s
Project Location



Date Prepared: 9/1/2005 By: mkmnash



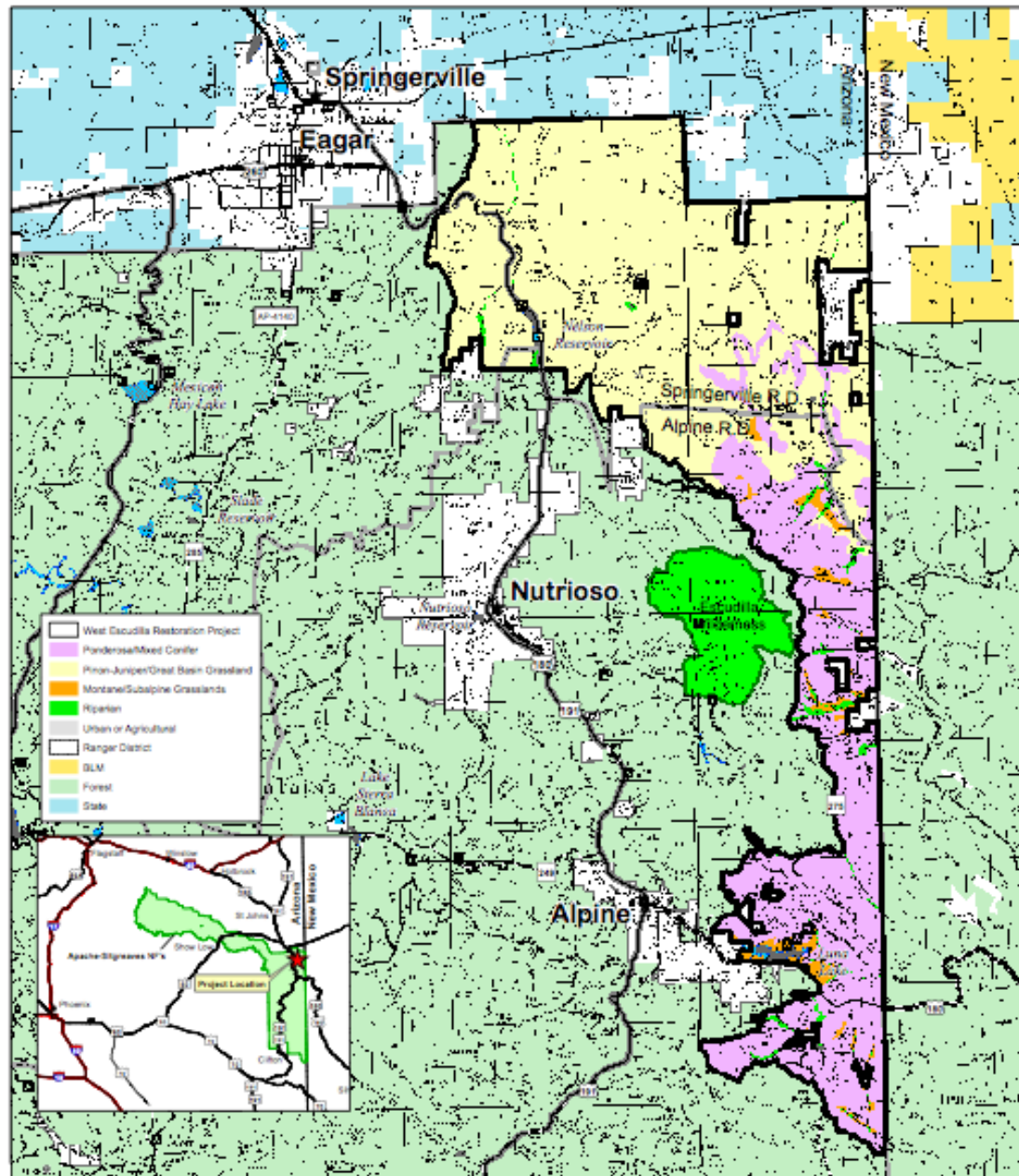
*** Disclaimer Statement ***
 The USDA Forest Service uses the most current and complete data available. GIS data and product accuracy may vary. Using GIS products for purposes other than those for which they were intended may yield inaccurate or misleading results. The USDA Forest Service reserves the right to correct, update, modify, or replace GIS products without notification. This map is not a legal land line or ownership document. Public lands are subject to change and leasing, and may have access restrictions; check with local offices. Obtain permission before entering private land.
 Projected Coordinate System: NAD 1983 UTM Zone 12N
 UTM = U.S. = U.S.



West Escudilla Analysis Area
Alpine R.D.
Apache-Sitgreaves N.F.s
Proposed Vegetation Treatments



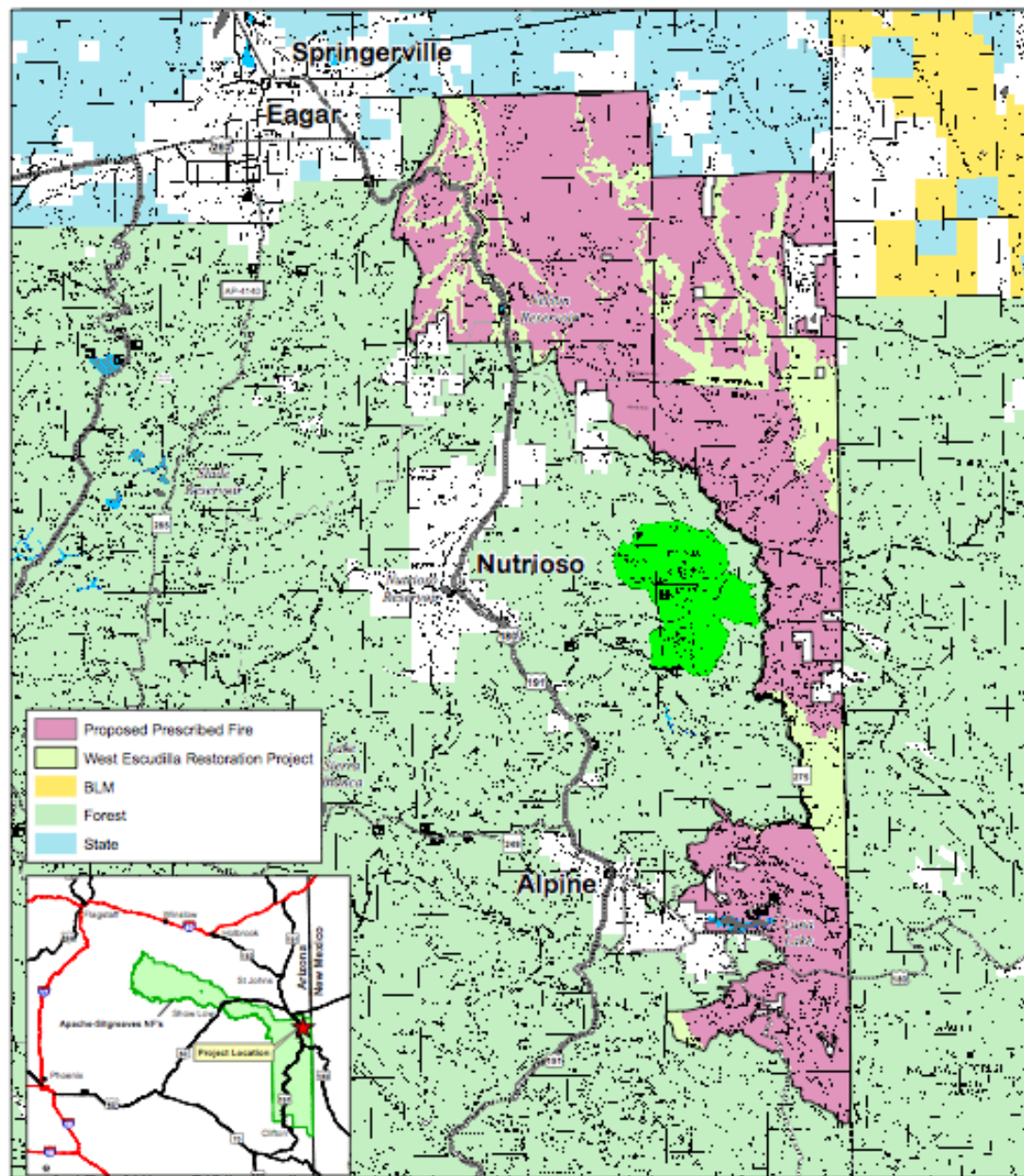
* Disclaimer Statement *
 The USDA Forest Service uses the most current and complete data available. GIS data and product accuracy may vary. Using GIS products for purposes other than those for which they were intended may yield inaccurate or misleading results. The USDA Forest Service reserves the right to correct, update, modify, or replace GIS products without notification. This map is not a legal land title or ownership document. Public lands are subject to change and leasing, and may have access restrictions; check with local offices. Obtain permission before entering private land.
 Projected Coordinate System: NAD 1983 UTM Zone 12N
 Date: 11/11/2011



West Escudilla Analysis Area
Alpine R.D.
Apache-Sitgreaves N.F.s
 Proposed Prescribed Fire



"Disclaimer Statement"
 The USFS Forest Service uses the most current and accurate data available. GIS data and product accuracy may vary. Using GIS products for purposes other than those for which they were intended may yield inaccurate or misleading results. The USFS Forest Service reserves the right to correct, update, modify, or remove GIS products without notification. This map is not a legal land title or ownership document. Public lands are subject to change and leasing, and may have access restrictions. Check with local offices. Obtain permission before entering private land.
 Project Coordinate System: NAD 1983 UTM Zone 12N

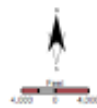


- Proposed Prescribed Fire
- West Escudilla Restoration Project
- BLM
- Forest
- State

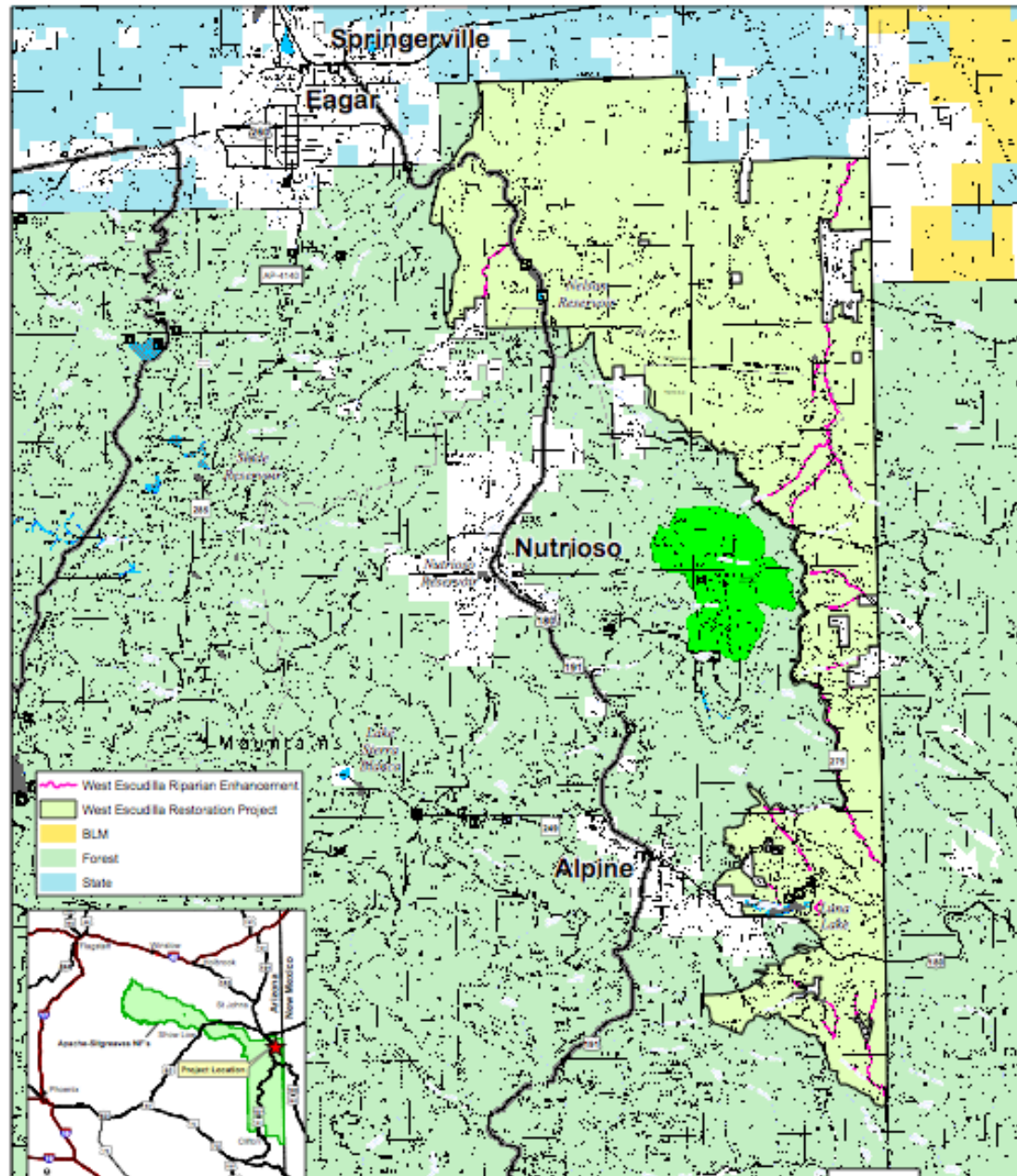


West Escudilla Analysis Area
Alpine R.D.
Apache-Sitgreaves N.F.s
Proposed Watershed Activities:
Riparian Enhancement

Scale: 1:50,000



"Disclaimer Statement"
 The USDA Forest Service uses the most current and complete data available. GIS data and product accuracy may vary using GIS products for purposes other than those for which they were created may yield inaccurate or misleading results. The USDA Forest Service reserves the right to correct, update, modify, or replace GIS products without notification. This map is not a legal and title or ownership document. Public lands are subject to change and leasing, and may have access restrictions; check with local offices. Obtain permission before entering private land. Projected Coordinate System: NAD 1983 UTM Zone 12N



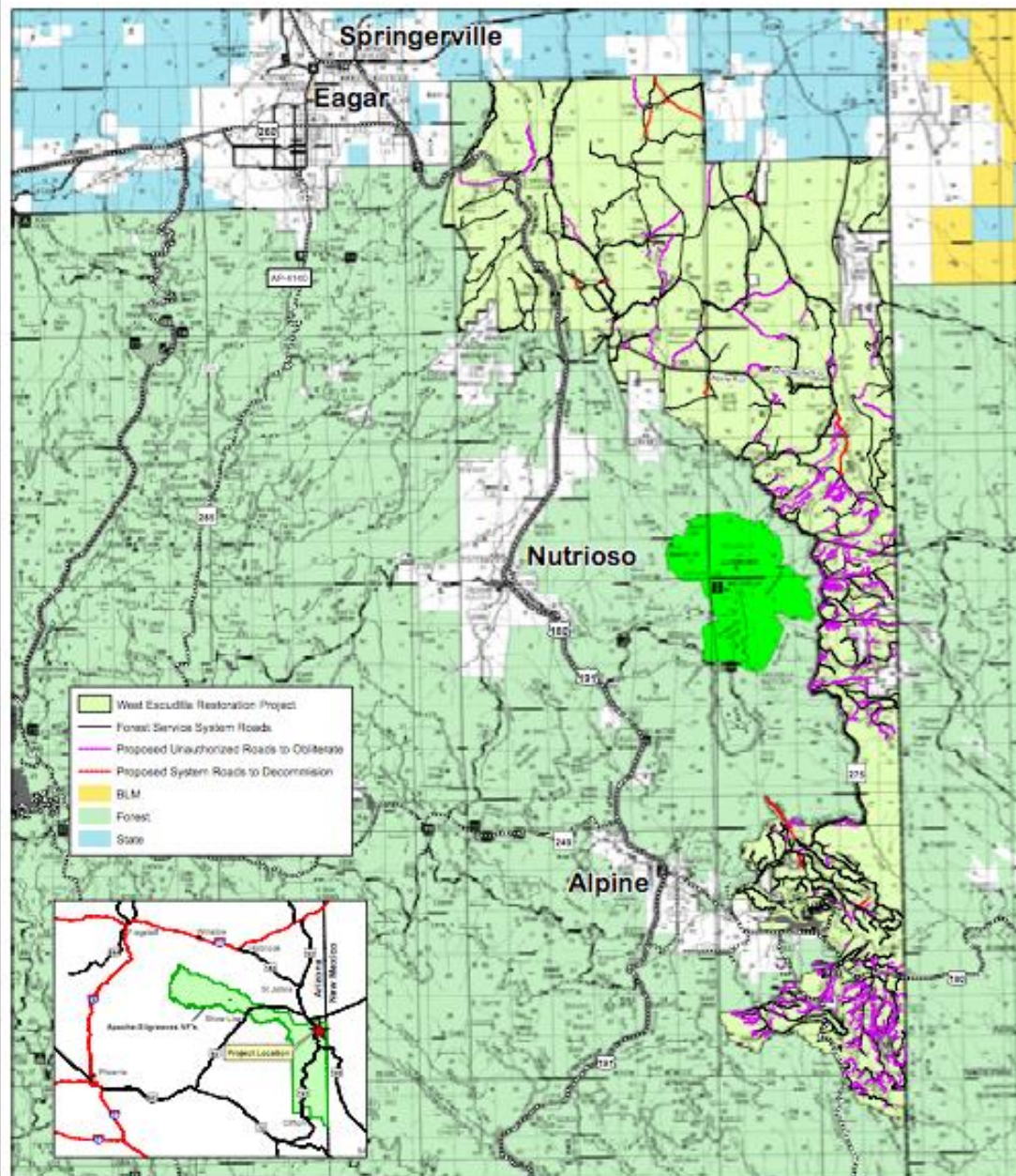
Alpine R.D.

Proposed Watershed Activities:

Road Improvements



*** Disclaimer Statement ***
The GlobalPower Service uses the most current and complete data available. GDS data and product accounts may vary. Global GDS products do not provide other than those for whom they were intended may vary. Information or marketing needs. The GlobalPower Service reserves the right to collect, update, modify, or replace GDS products without notification. This may not be a legal and may be marketing document. Publications are subject to change and bearing, and may have associated technical, check with local offices. Certain permission before sending private letter. Requester Coordinate System: NAD 83 of the Zone 12N
© 2000 GlobalPower Service
www.globalpower.com



West Escudilla Timeframe

ZONE	DISTRICT	SALE QTR*	FY 2017	Contract	ACRES	**VOL
			SALE NAME	Type		CCF
EAST-APACHE	ALPINE	1ST				
		2ND				
		3RD				
		4TH	Little (West Esc)	TS	1,500	7,500
					1,500	7,500

West Escudilla Timeframe

ZONE	DISTRICT	SALE	FY 2018	Contract	ACRES	**VOL
		QTR*	SALE NAME	Type		CCF
EAST-APACHE	ALPINE	1ST	Luna Tank (West Esc)	TS	1,500	7,500
		2ND				
		3RD				
		4TH	Pace Creek (West Esc)	TS	2,750	14,000
					4,250	21,500

West Escudilla Timeframe

ZONE	DISTRICT	SALE	FY 2019	Contract	ACRES	**VOL
		QTR*	SALE NAME	Type		CCF
EAST-APACHE	ALPINE	1ST				
		2ND	ELC(west Esc)	TS	2,800	12,000
		3RD	Tenny Pond (West Esc)	TS	1,250	6,000
		4TH	LOCO (West Esc)	TS	3,500	14,000
					7,550	32,000