

Arizona Association of Conservation Districts

2016 Summer Training
conference and directors meeting

Forest and Woodland Restoration

Importance of Local Government

Local Government in Decision Making

- Local government has a unique position in public planning and policy, a role not filled by many other entities.
- Local government has a primary goal of protecting societal and socio-economic concerns along with constitutionally derived powers of protecting and promoting the health, safety and welfare of it's areas.

Local Government in Decision Making

- Comprehensive knowledge and subject-matter expertise in areas that drive local economies and tax-base. The very societal infrastructure that almost all rely upon as a “given” – public safety in the form of Peace Officers and Fire/Search and Rescue, Schools, safe water, sanitation services, transportation infrastructure, etc.
- Elected to represent the people directly in the decision making process.

Apache County, Arizona Land Mass Overview:

| | | |
|---------------|---------------------|-----------------|
| Total: | 11,218 square miles | 7,179,520 acres |
| Land: | 11,198 square miles | 7,166,720 acres |
| Water: | 21 square miles | 13,440 acres |

By Disposition (percentages vary due to rounding)

| | | |
|-----------------|-----|-----------------|
| Private: | 11% | 841,674 acres |
| State: | 9% | 661,739 acres |
| BIA: | 67% | 4,902,465 acres |
| BLM: | 2% | 121,633 acres |
| DOI: | 2% | 164,101 acres |
| USFS: | 9% | 487,908 acres |



* Graphic source: Joseph Crouse, Sr. Applications Systems Analyst, ERI



CF-32348



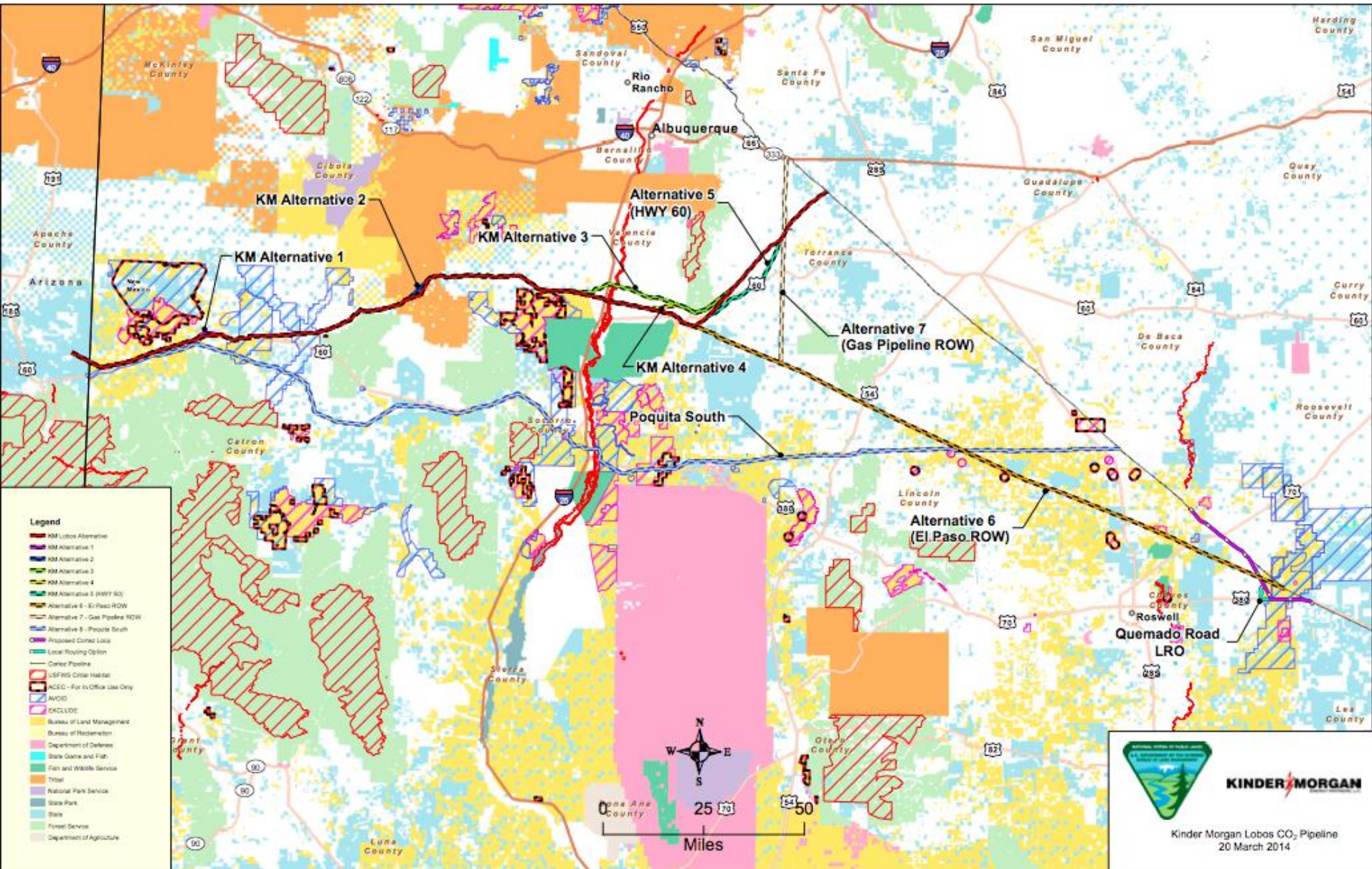
Local Government in Decision Making

- One of the most important actions in recent times to county clients has been the entering into MOU's with the local NRCD districts for their particular land mass.

Example Cases

Some on-the-ground examples to illustrate the importance of local government input, and the necessity for agencies to increase engagement early and often in the process

Kinder-Morgan Pipeline

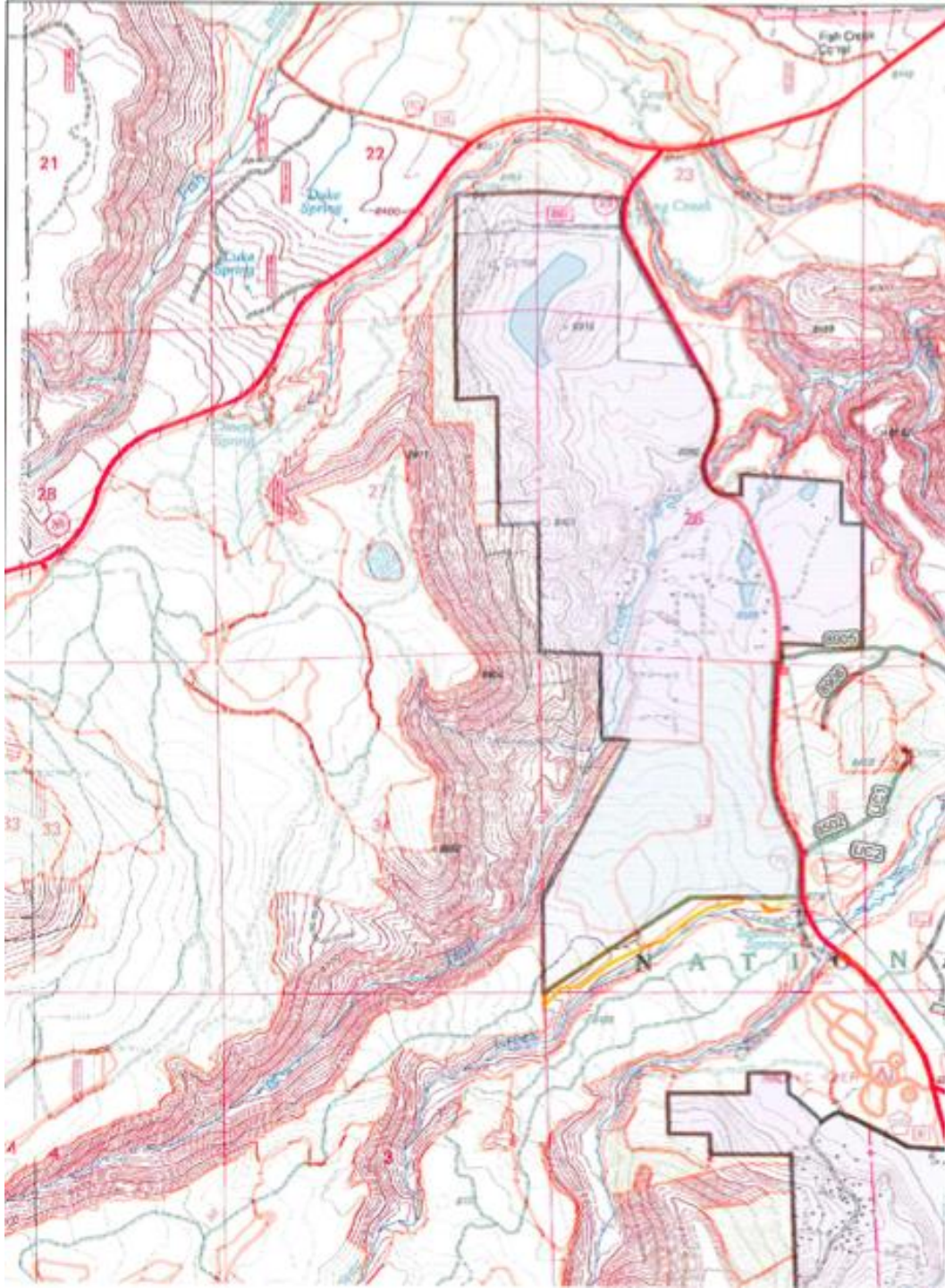


Kinder Morgan Lobos CO₂ Pipeline
20 March 2014

Kinder-Morgan Lobos Pipeling

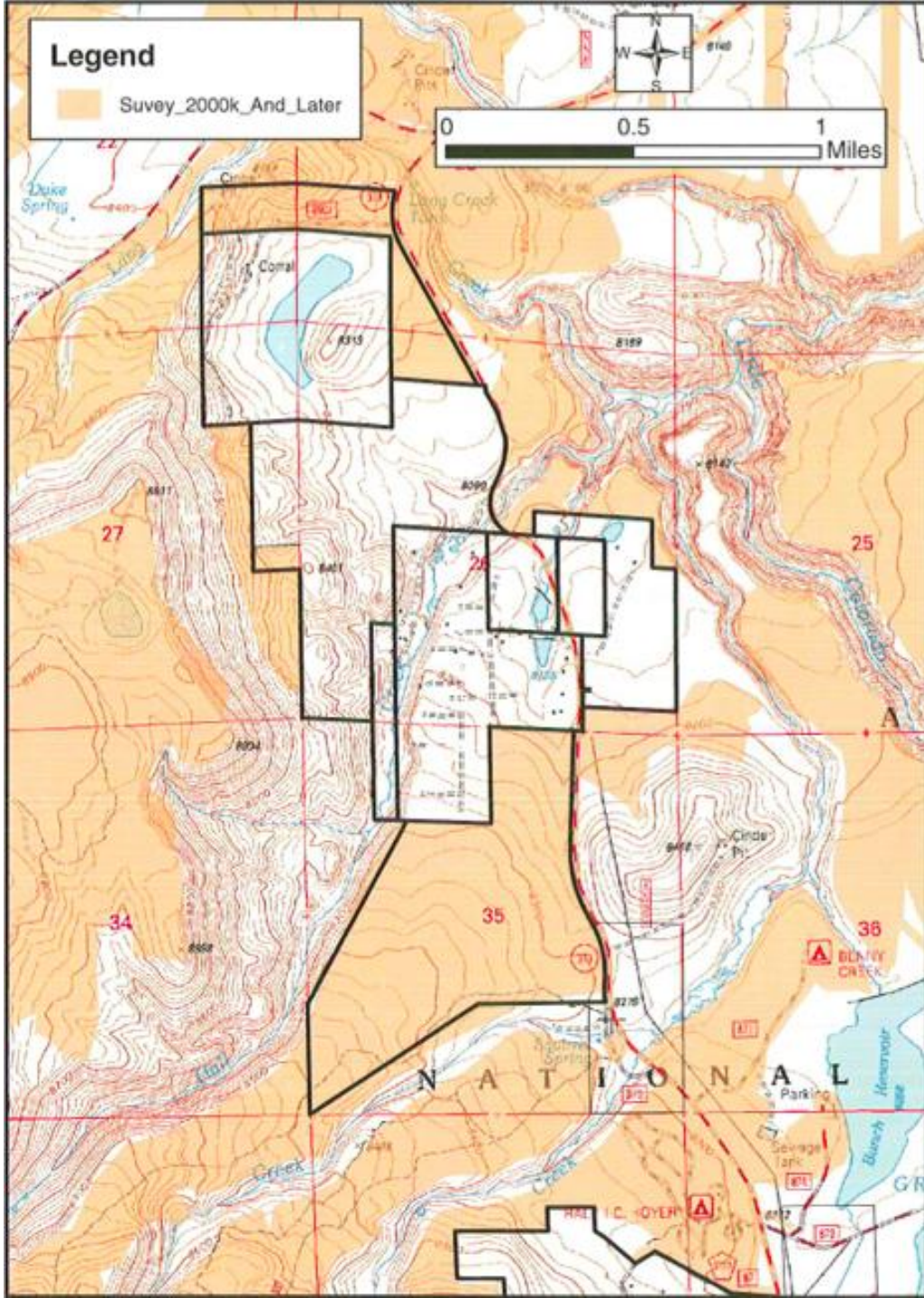
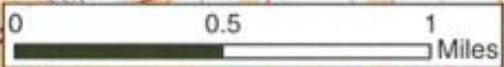
- County able to be on the ID-Team to better represent the local forage and rangeland users.
- Conflicts arise when forage utilization is interrupted by surveying operations, multiple roads built with no warning, dust mitigation, water access points, etc.
- Local government input invaluable to mitigating those conflicts in the ID-Team to our local NRCD.

Greer, AZ



Legend

Survey_2000k_And_Later





Project Name: Owens West WUI
 National Forest: Apache-Sitgreaves
 Ranger District: Springerville



== PVT Access treatment

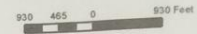
- Hand Thin
- Hand, Mech?
- In Progress
- Mechanical

ALP Surface Ownership

- USFS
- OTHER

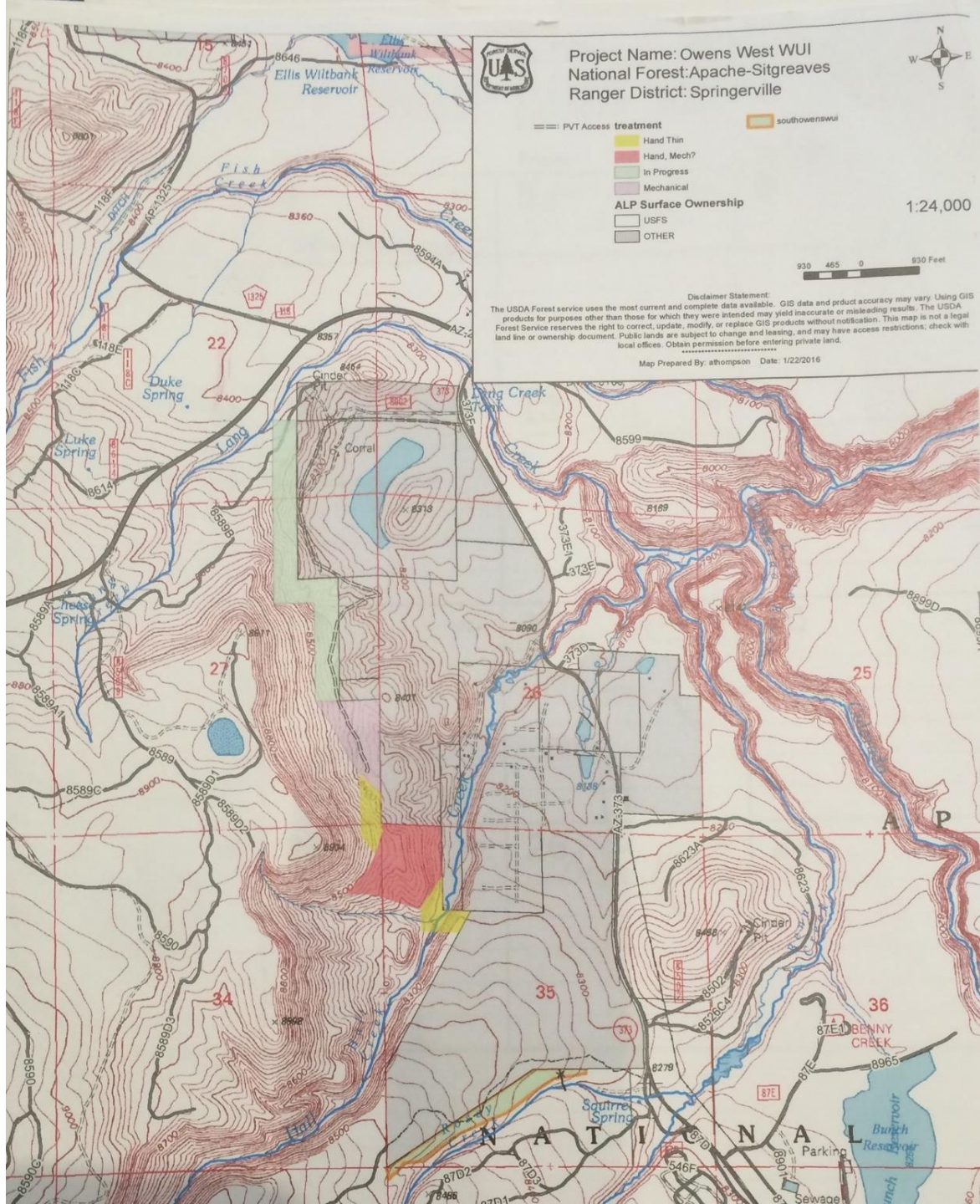
southowenswui

1:24,000



Disclaimer Statement:
 The USDA Forest Service uses the most current and complete data available. GIS data end product accuracy may vary. Using GIS products for purposes other than those for which they were intended may yield inaccurate or misleading results. The USDA Forest Service reserves the right to correct, update, modify, or replace GIS products without notification. This map is not a legal land line or ownership document. Public lands are subject to change and leasing, and may have access restrictions; check with local offices. Obtain permission before entering private land.

Map Prepared By: atompson Date: 1/22/2016

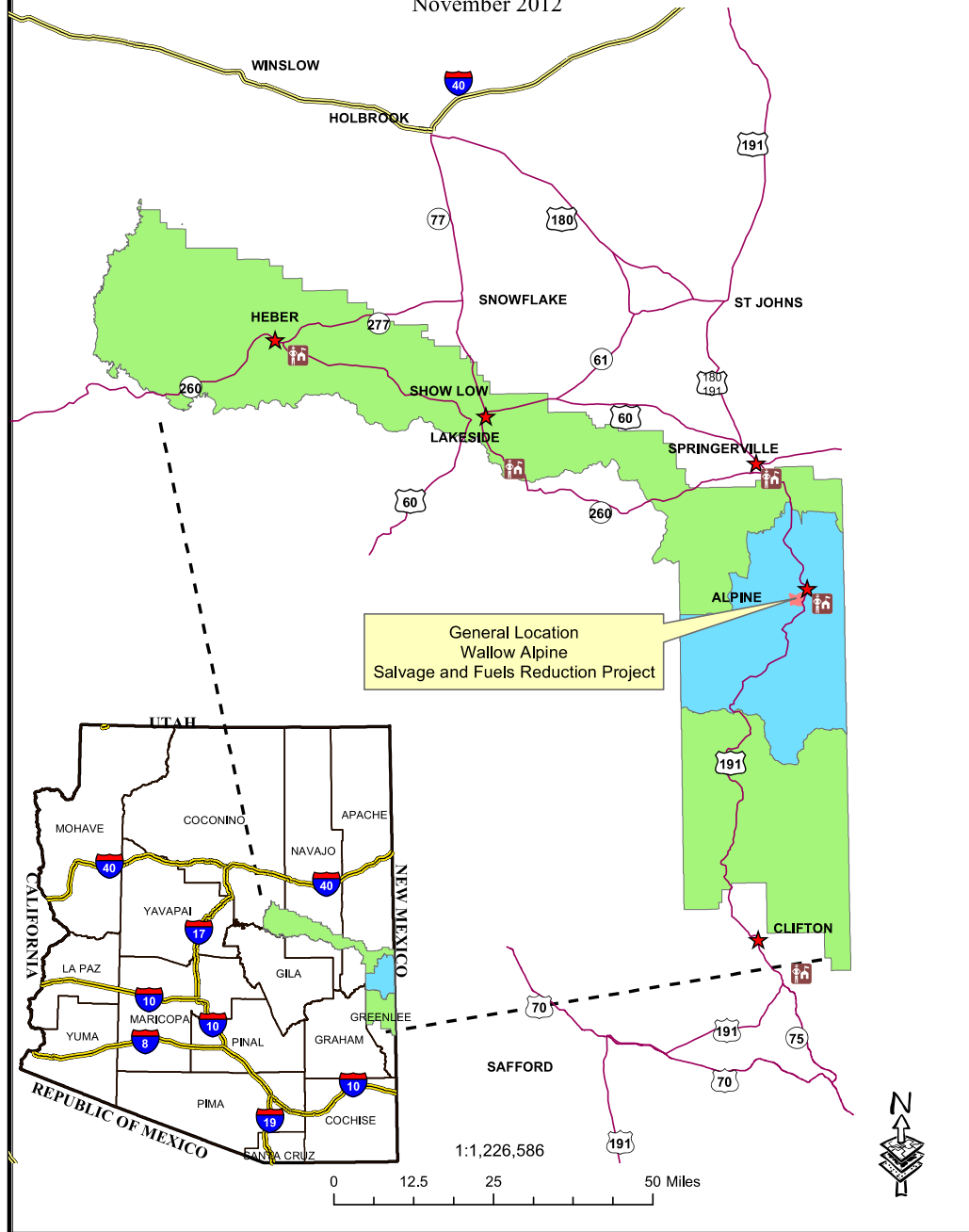


Wallow Salvage - Alpine

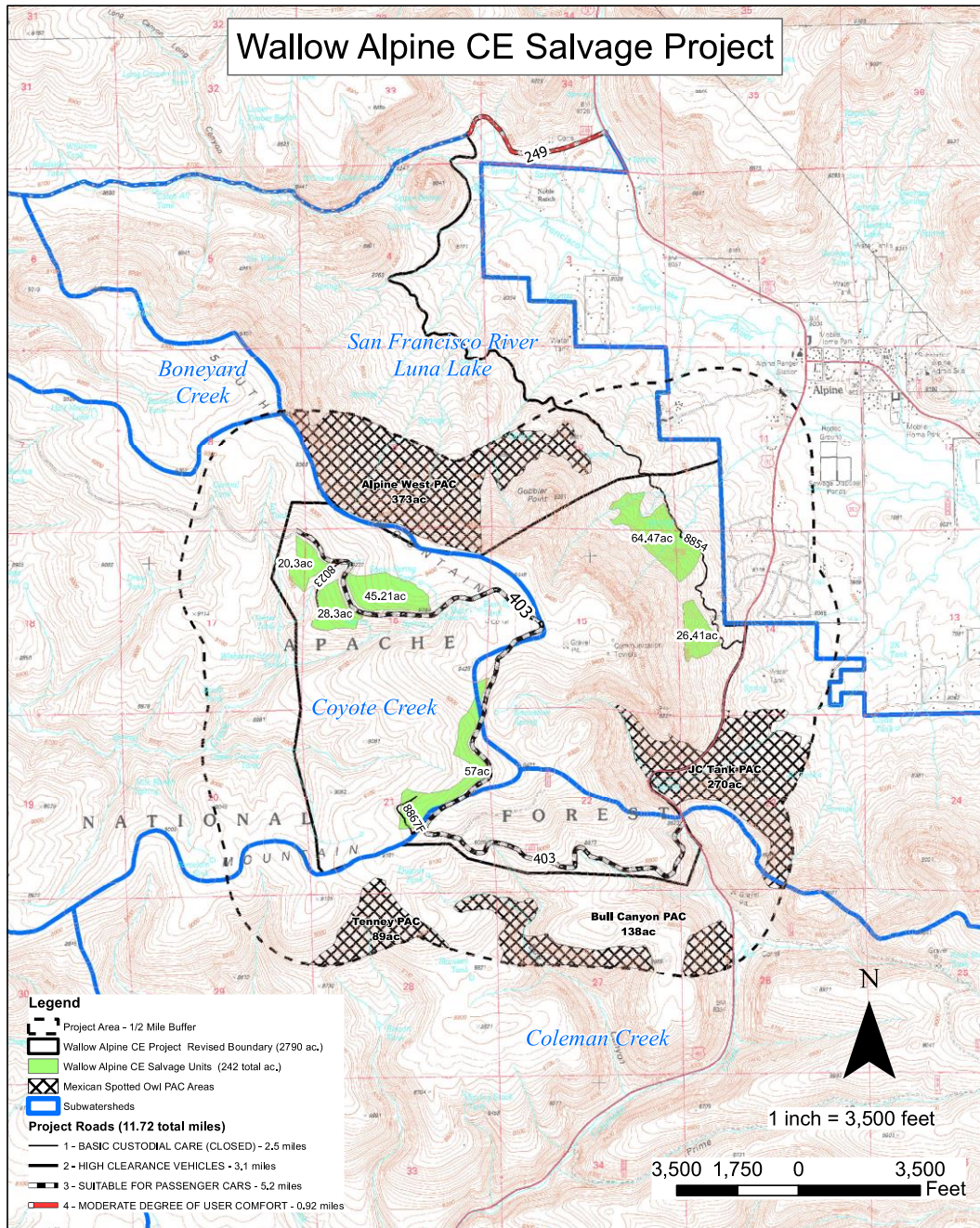
APACHE-SITGREAVES NATIONAL FORESTS

Alpine Ranger District

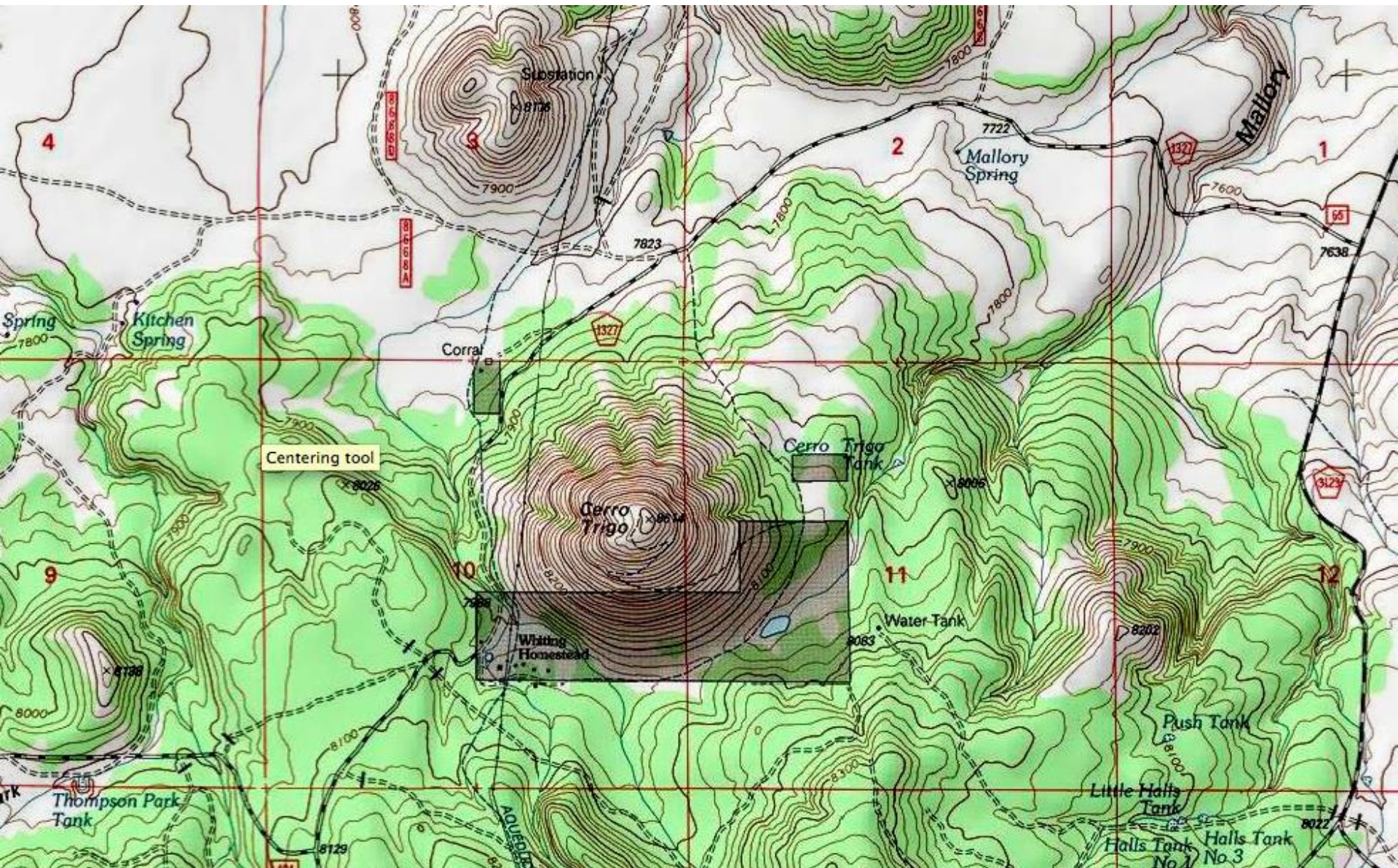
November 2012

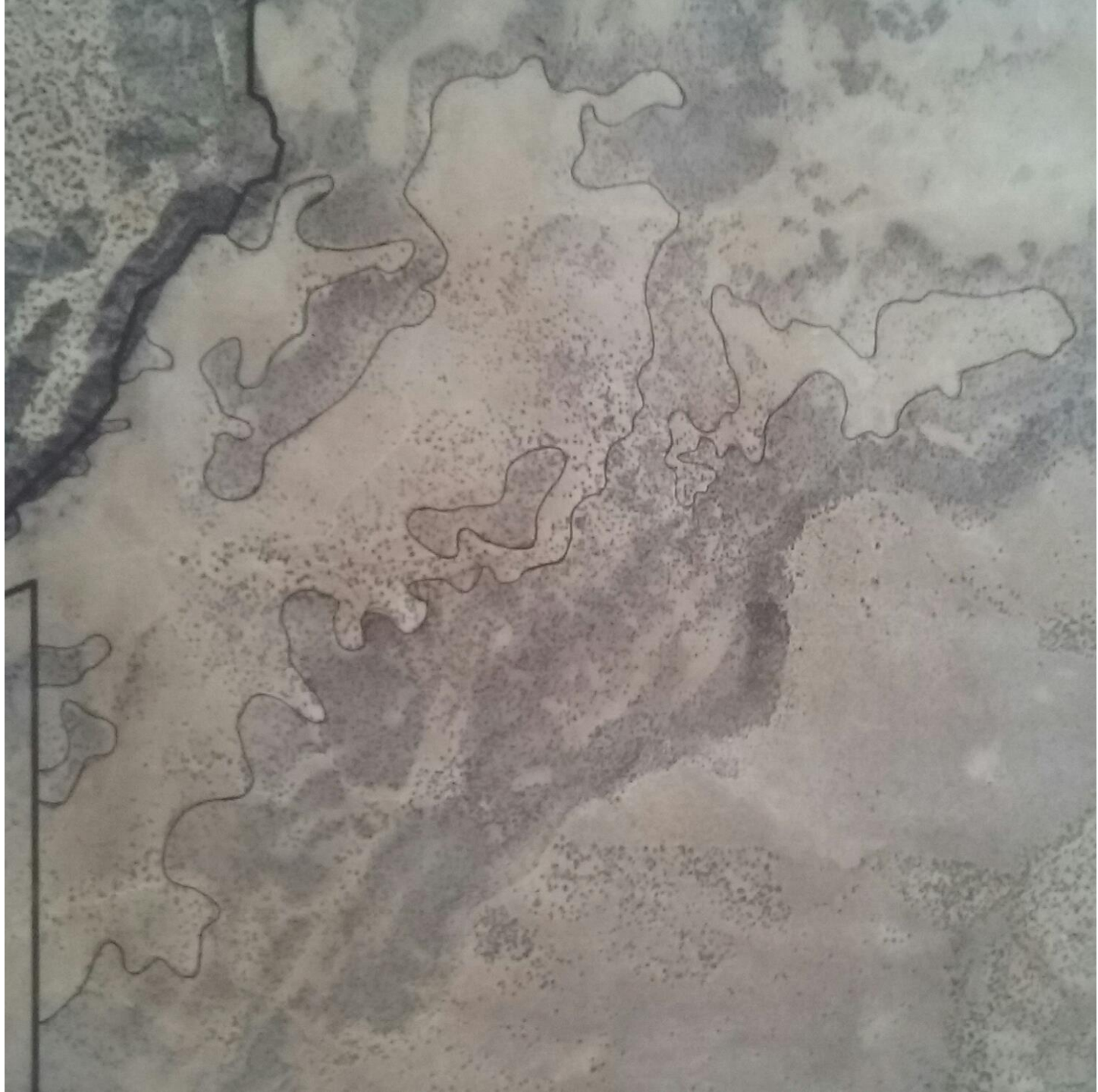


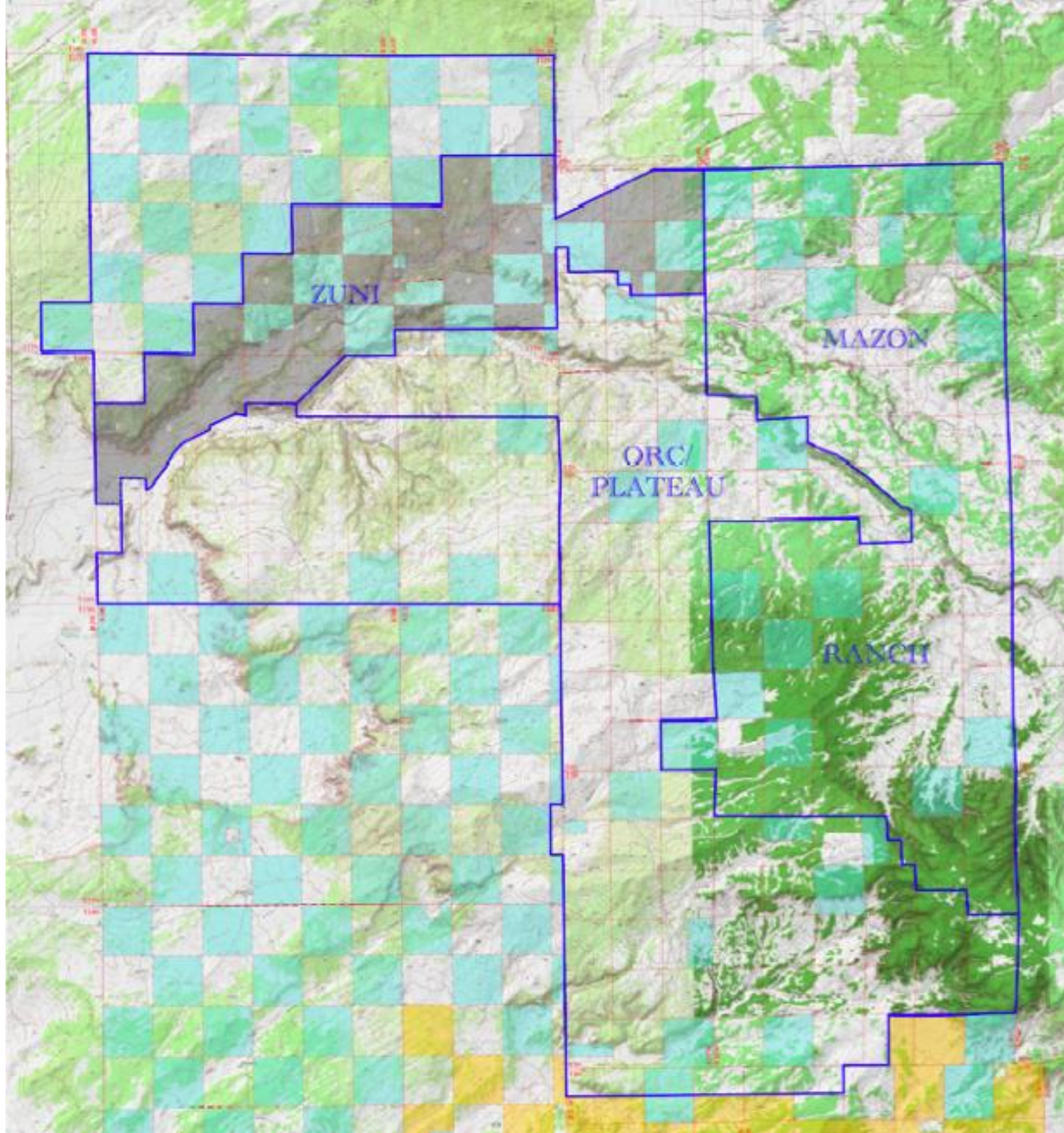
Wallow Alpine CE Salvage Project

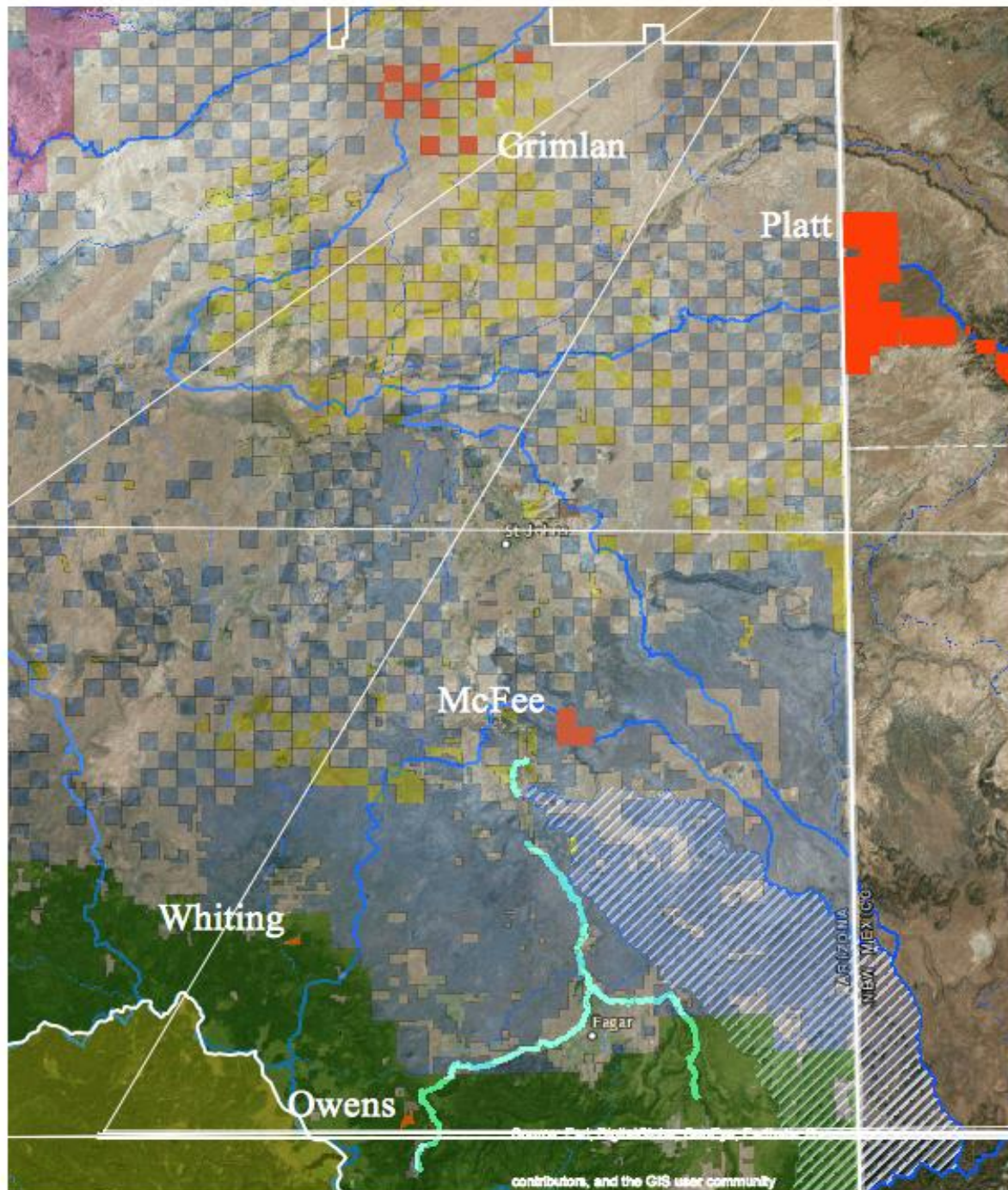


Restore Arizona









Next Steps

- Apache County hosting critical meeting of industry partners, state agency, division and department leaders (Forestry, Agriculture, lands, Schools, legislative, Water, Air, economics) NRCD, local governments to expand the breadth of treatable landscape across all lands within the exterior boundaries of the county.
- Best case scenario, used as a working model to accommodate similar actions in every county of our great state of Arizona and across the Western Caucus.

Next Steps

- Allows increased improvements and expansion in air shed and water shed improvements.
- Allows increased forage and seed stores for livestock and managed game species.
- Allows increased inputs to the benefactors – public schools.
- More jobs on the landscape mean more economy, savings from less disruptions, increased safety, increased production, value-added promotion and increased viability of new industry players in woody-biomass utilization.

Next Steps

- As an integral local government partner and supporter of prescribed fire treatment and sciences, exponentially expand the utilization of prescribed fire on our landscapes as a management and restoration tool through the Arizona Prescribed Fire Council and the Southwest Fire Science Consortium.