

3 Tall Pines Farm LLC  
W6326 Co Rd Z  
Plymouth, WI 53073

Sample 616-122023-222

Secret Breakfast

Batch/Lot # SB18310

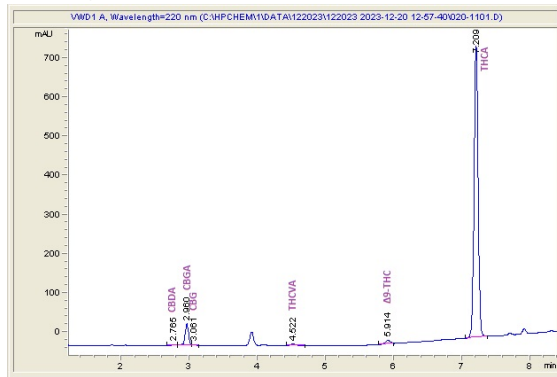
Sample Submitted: 12-20-2023; Report Date: 12-28-2023

### Secret Breakfast

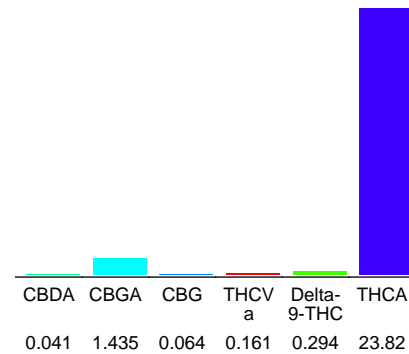
Batch/Lot # SB18310

Plant Material: Hemp Flower

#### Chromatogram



#### Cannabinoid Profile



#### Cannabinoid Profile by HPLC

**0.29%**  
Delta-9-THC

**0.00%**  
CBD

**25.82%**  
Total Cannabinoids

Cannabinoid	% wt	mg/g
CBDA	0.041	0.41
CBGA	1.435	14.35
CBG	0.064	0.64
THCVa	0.161	1.61
Delta-9-THC	0.294	2.94
THCA	23.82	238.2
<b>Total Cannabinoids</b>	<b>25.82</b>	<b>258.2</b>
<b>Calculated Total THC</b>	<b>21.18</b>	<b>211.84</b>
<b>Calculated CBD Yield</b>	<b>0.04</b>	<b>0.36</b>

Calculated Total THC = Delta-9-THC + 0.877 \* THCA

Calculated Maximum CBD Yield = CBD + 0.877 \* CBDA

**Marin Analytics, LLC**  
250 Bel Marin Keys Blvd, Suite D4  
Novato, CA 94949

833-321-TEST / info@marinanalytics.com

**Mike Clemmons**  
Lab Manager

This sample has been tested by Marin Analytics, LLC using valid testing methodologies and a quality system. Values reported relate only to the sample tested. Marin Analytics, LLC makes no claims as to the efficacy, safety, or other risks associated with any detected or non-detected levels of any compounds reported herein. This Certificate shall not be reproduced except in full without the written approval of Marin Analytics, LLC. Copyright 2023 Marin Analytics, LLC All Rights Reserved.