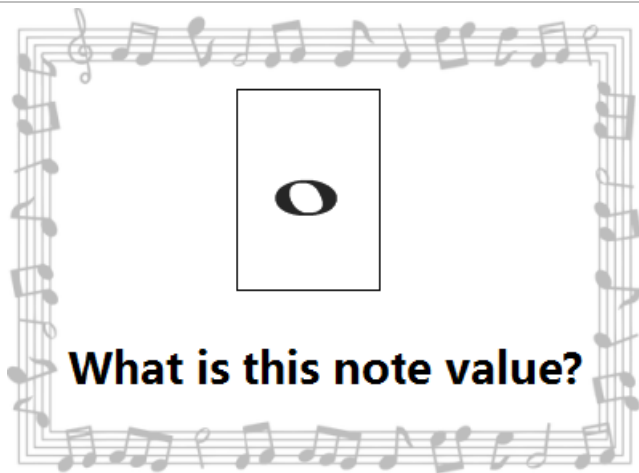


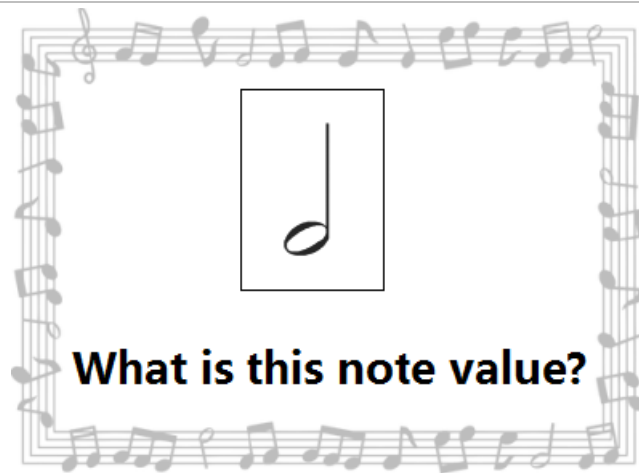
Musical Knowledge Game Cards

(Grade 1 Questions)



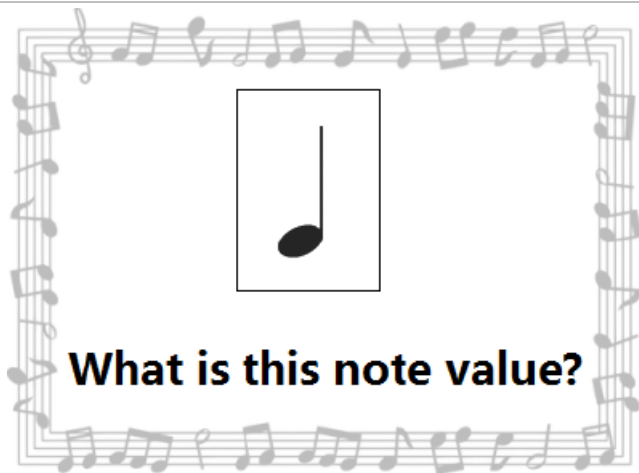
A musical staff with a treble clef and a key signature of one flat. The staff contains a sequence of notes: a quarter note G4, an eighth note A4, a quarter note Bb4, an eighth note C5, a quarter note D5, an eighth note E5, a quarter note F5, an eighth note G5, a quarter note A5, an eighth note Bb5, a quarter note C6, an eighth note Bb5, a quarter note A5, an eighth note G5, a quarter note F5, an eighth note E5, a quarter note D5, an eighth note C5, a quarter note Bb4, an eighth note A4, a quarter note G4. In the center of the staff, a whole note (semibreve) is highlighted in a black box.

What is this note value?



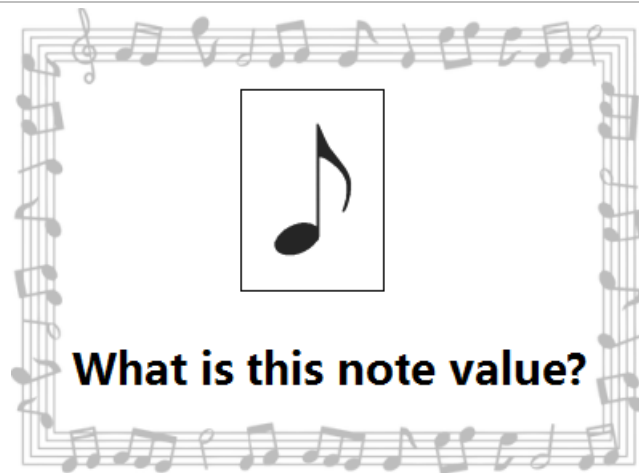
A musical staff with a treble clef and a key signature of one flat. The staff contains a sequence of notes: a quarter note G4, an eighth note A4, a quarter note Bb4, an eighth note C5, a quarter note D5, an eighth note E5, a quarter note F5, an eighth note G5, a quarter note A5, an eighth note Bb5, a quarter note C6, an eighth note Bb5, a quarter note A5, an eighth note G5, a quarter note F5, an eighth note E5, a quarter note D5, an eighth note C5, a quarter note Bb4, an eighth note A4, a quarter note G4. In the center of the staff, a half note (minim) is highlighted in a black box.

What is this note value?



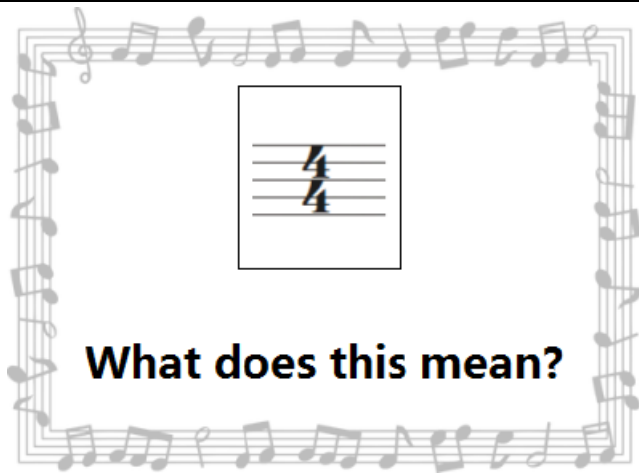
A musical staff with a treble clef and a key signature of one flat. The staff contains a sequence of notes: a quarter note G4, an eighth note A4, a quarter note Bb4, an eighth note C5, a quarter note D5, an eighth note E5, a quarter note F5, an eighth note G5, a quarter note A5, an eighth note Bb5, a quarter note C6, an eighth note Bb5, a quarter note A5, an eighth note G5, a quarter note F5, an eighth note E5, a quarter note D5, an eighth note C5, a quarter note Bb4, an eighth note A4, a quarter note G4. In the center of the staff, a quarter note (crotchet) is highlighted in a black box.

What is this note value?

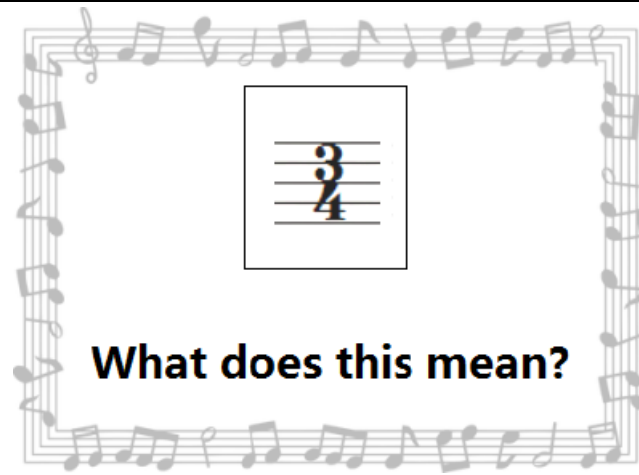


A musical staff with a treble clef and a key signature of one flat. The staff contains a sequence of notes: a quarter note G4, an eighth note A4, a quarter note Bb4, an eighth note C5, a quarter note D5, an eighth note E5, a quarter note F5, an eighth note G5, a quarter note A5, an eighth note Bb5, a quarter note C6, an eighth note Bb5, a quarter note A5, an eighth note G5, a quarter note F5, an eighth note E5, a quarter note D5, an eighth note C5, a quarter note Bb4, an eighth note A4, a quarter note G4. In the center of the staff, an eighth note (quaver) is highlighted in a black box.

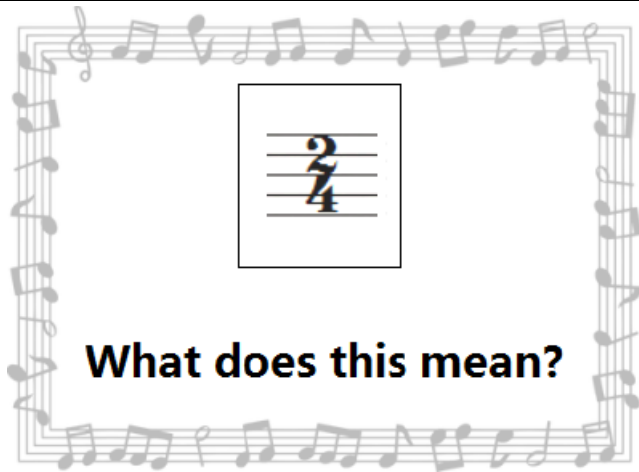
What is this note value?



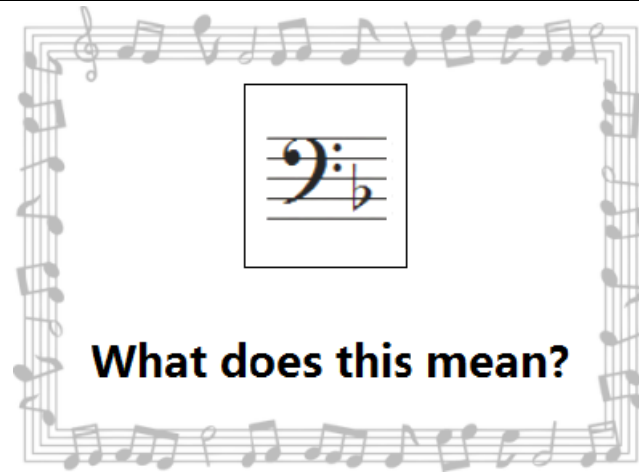
What does this mean?



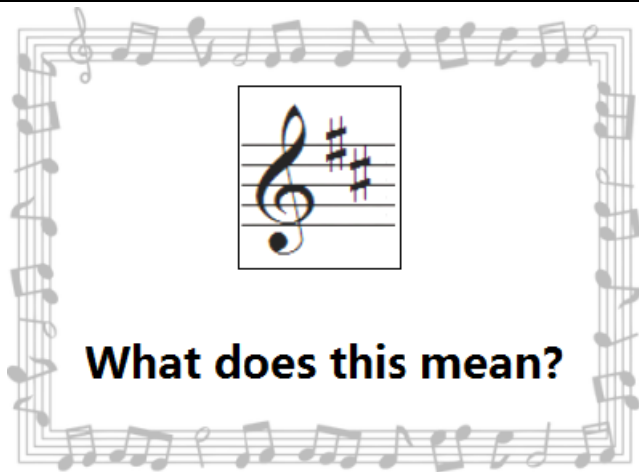
What does this mean?



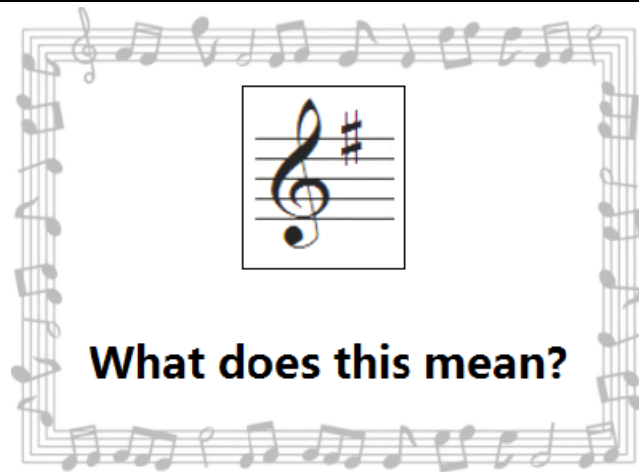
What does this mean?



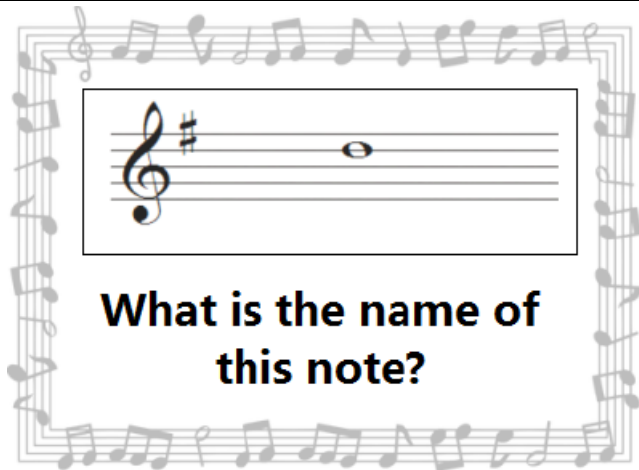
What does this mean?



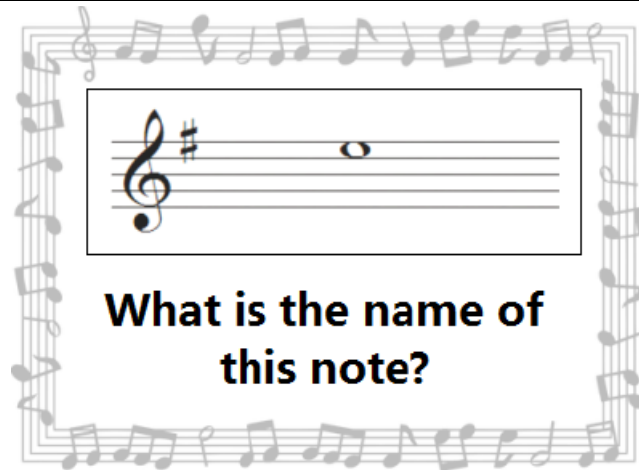
What does this mean?



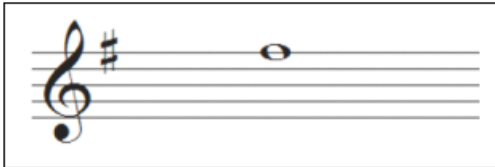
What does this mean?



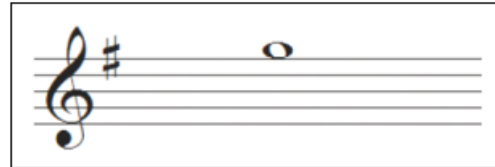
**What is the name of
this note?**



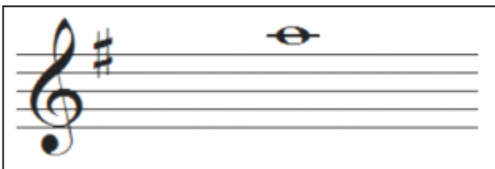
**What is the name of
this note?**



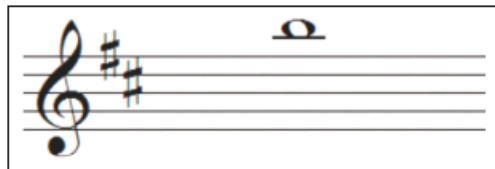
**What is the name of
this note?**



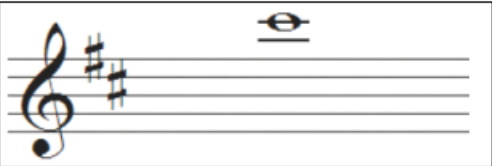
**What is the name of
this note?**



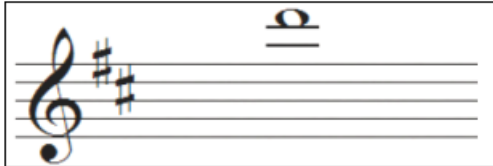
**What is the name of
this note?**




**What is the name of
this note?**




**What is the name of
this note?**



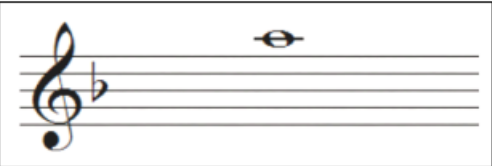
**What is the name of
this note?**



**What is the name of
this note?**

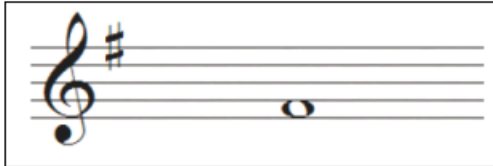


**What is the name of
this note?**



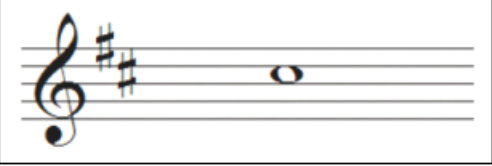
A musical staff in treble clef with a key signature of one flat (Bb). A whole note is placed on the second line of the staff, which is G4.

What is the name of this note?



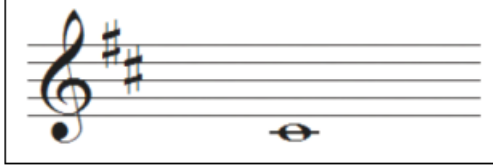
A musical staff in treble clef with a key signature of one sharp (F#). A whole note is placed on the second space of the staff, which is F#4.

What is the name of this note?



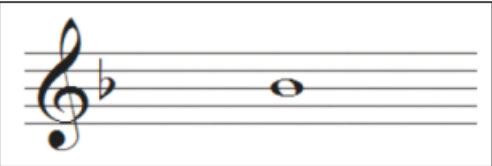
A musical staff in treble clef with a key signature of two sharps (F# and C#). A whole note is placed on the second space of the staff, which is A4.

What is the name of this note?

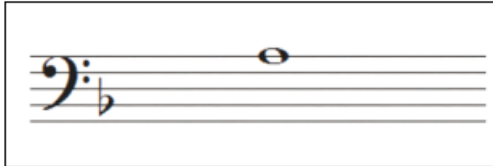


A musical staff in treble clef with a key signature of two sharps (F# and C#). A whole note is placed on the third line of the staff, which is B4.


What is the name of this note?




**What is the name of
this note?**



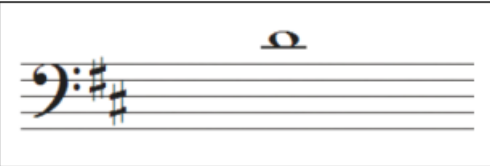
**What is the name of
this note?**



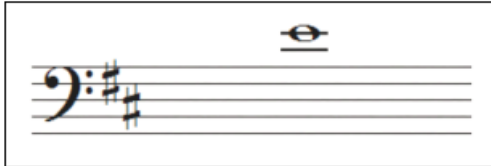
**What is the name of
this note?**



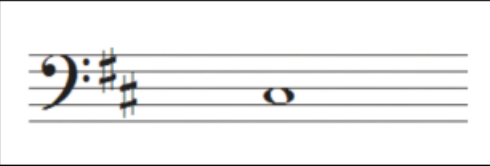
**What is the name of
this note?**




What is the name of this note?



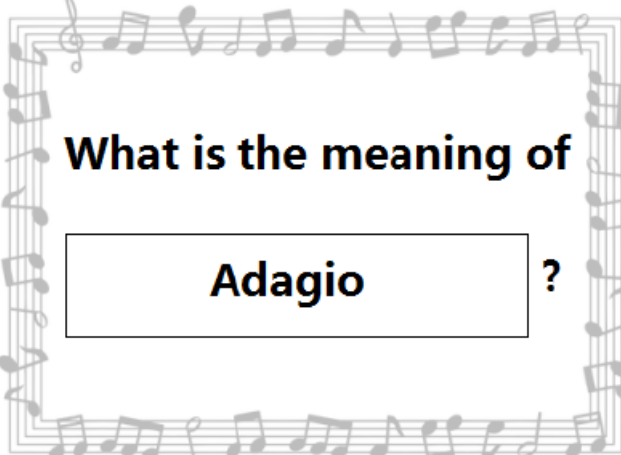
What is the name of this note?



What is the name of this note?

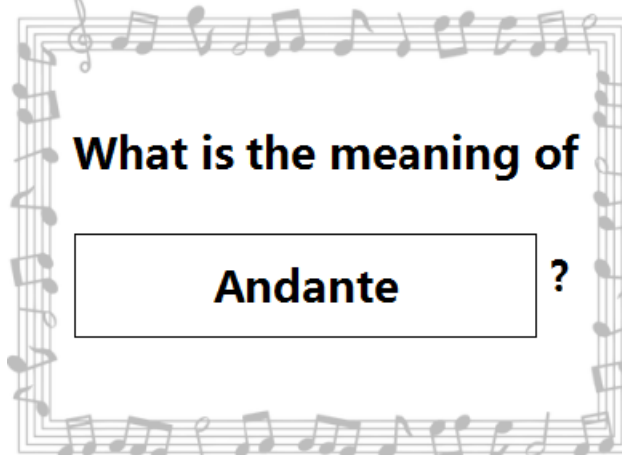


What is the name of this note?



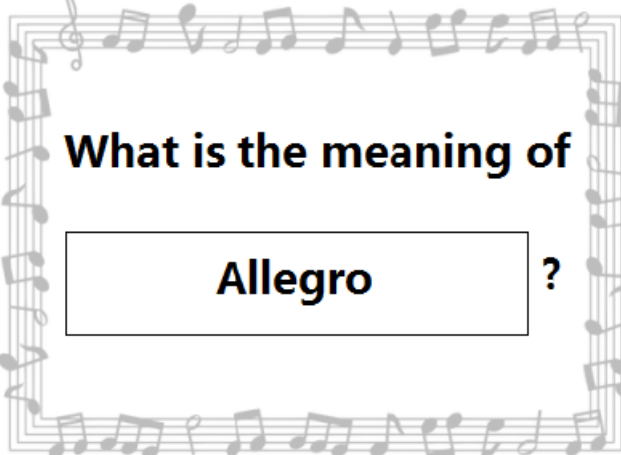
What is the meaning of

Adagio ?



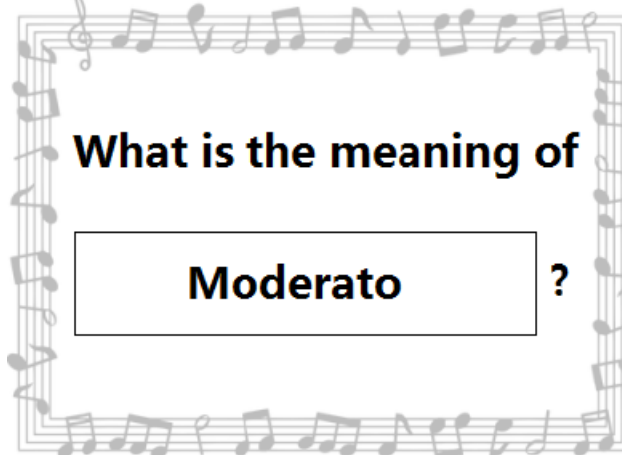
What is the meaning of

Andante ?



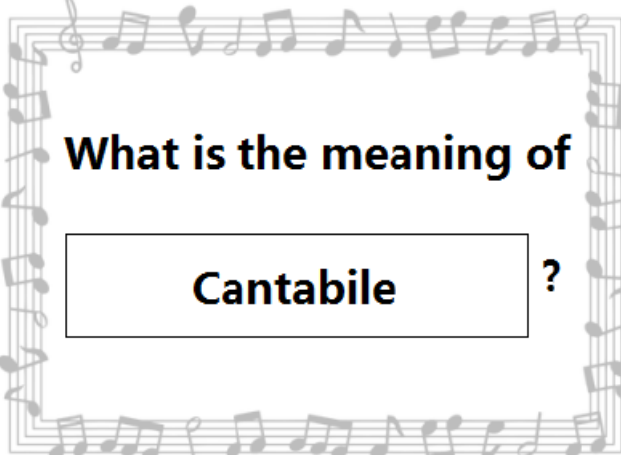
What is the meaning of

Allegro ?



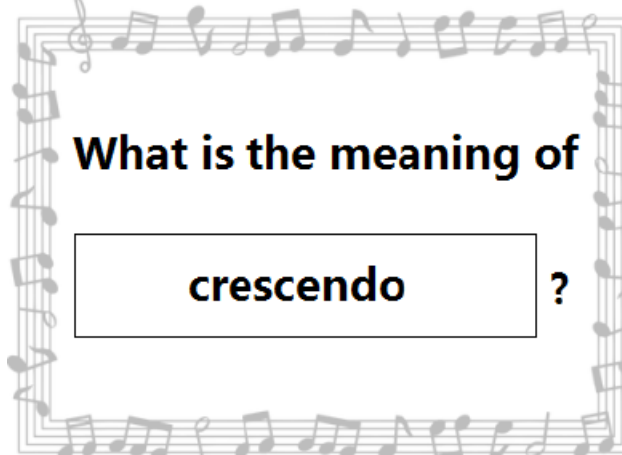
What is the meaning of

Moderato ?

A decorative border made of musical notation, including a treble clef, a key signature of one flat, and various note values, surrounding the text.

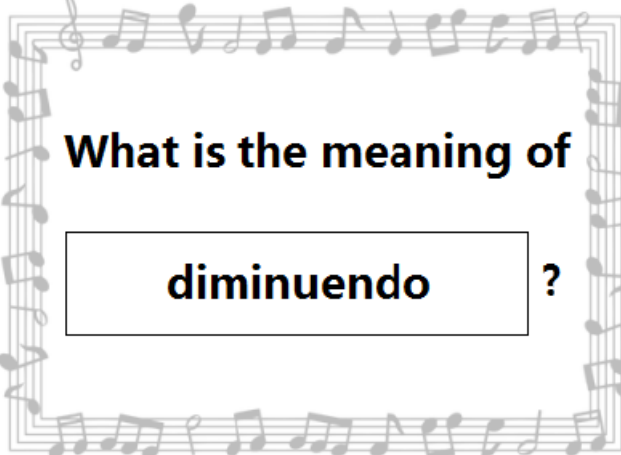
What is the meaning of

Cantabile ?

A decorative border made of musical notation, including a treble clef, a key signature of one flat, and various note values, surrounding the text.

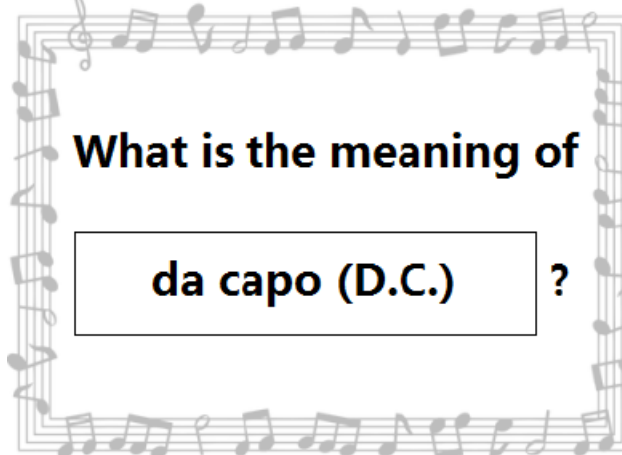
What is the meaning of

crescendo ?

A decorative border made of musical notation, including a treble clef, a key signature of one flat, and various note values, surrounding the text.

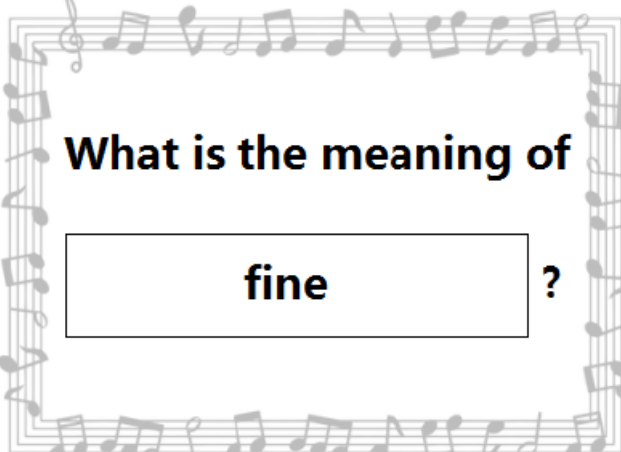
What is the meaning of

diminuendo ?

A decorative border made of musical notation, including a treble clef, a key signature of one flat, and various note values, surrounding the text.

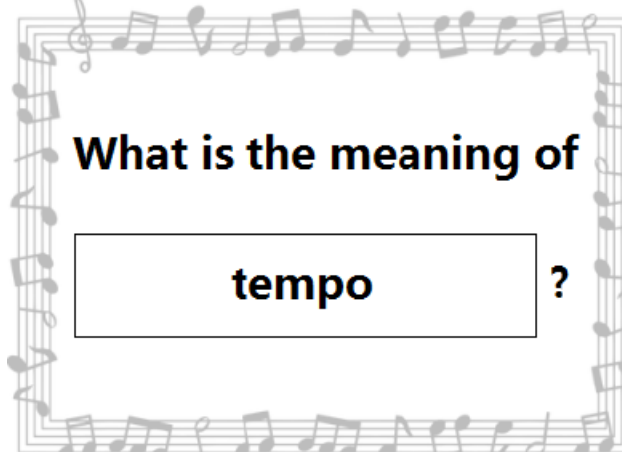
What is the meaning of

da capo (D.C.) ?

A decorative border made of musical notes and staves, forming a rectangular frame around the text.

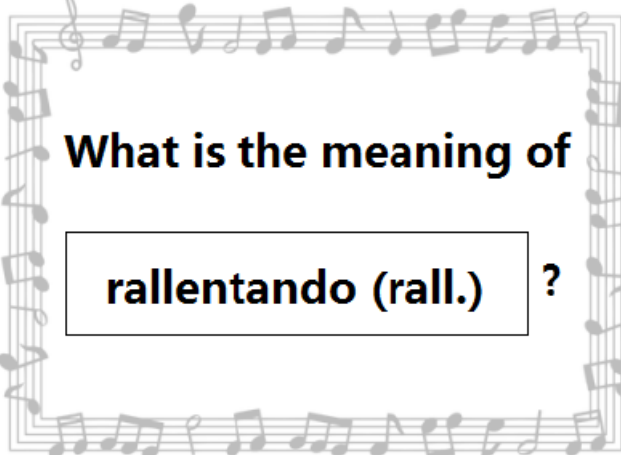
What is the meaning of

fine ?

A decorative border made of musical notes and staves, forming a rectangular frame around the text.

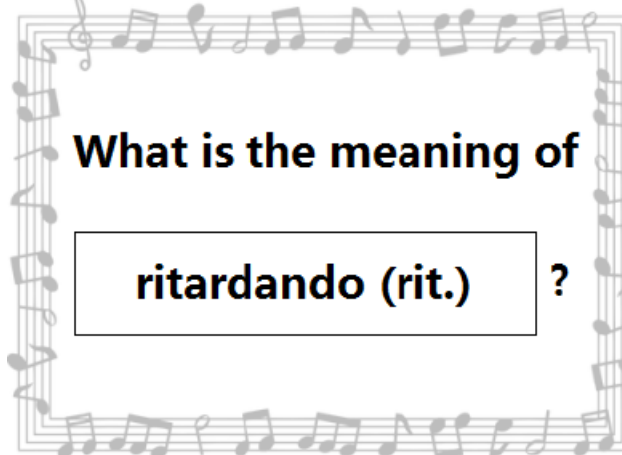
What is the meaning of

tempo ?

A decorative border made of musical notes and staves, forming a rectangular frame around the text.

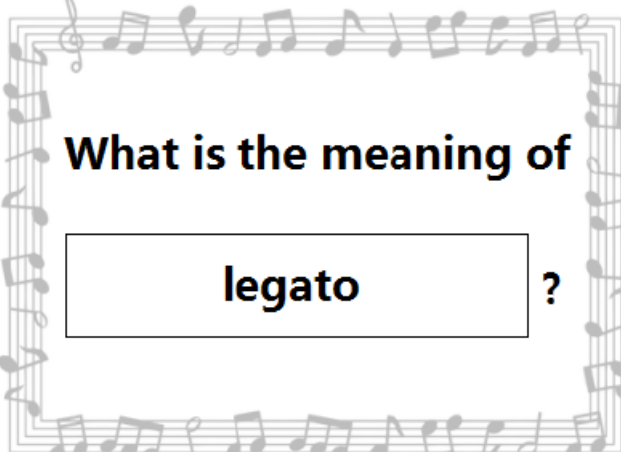
What is the meaning of

rallentando (rall.) ?

A decorative border made of musical notes and staves, forming a rectangular frame around the text.

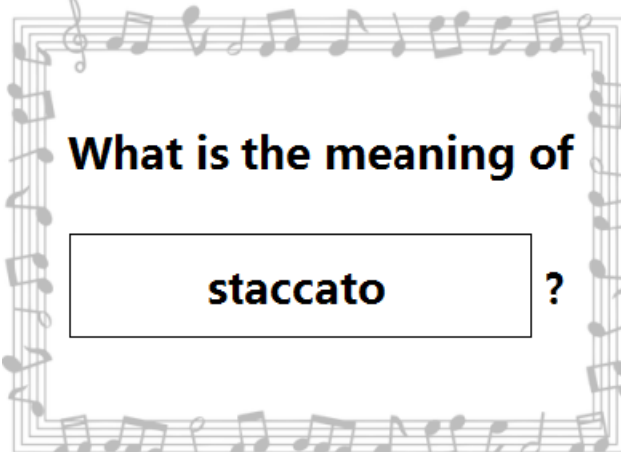
What is the meaning of

ritardando (rit.) ?



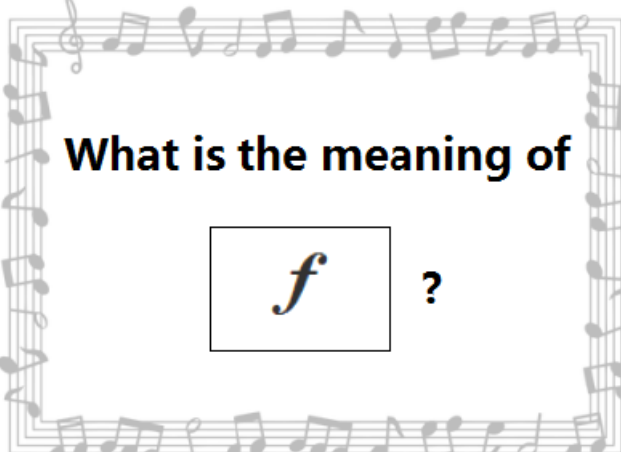
What is the meaning of

legato ?



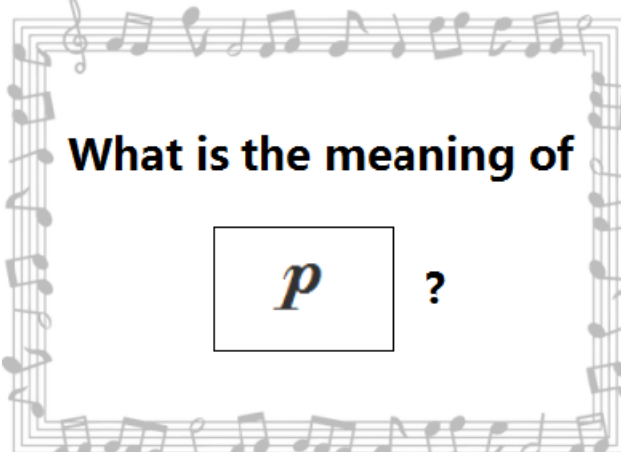
What is the meaning of

staccato ?



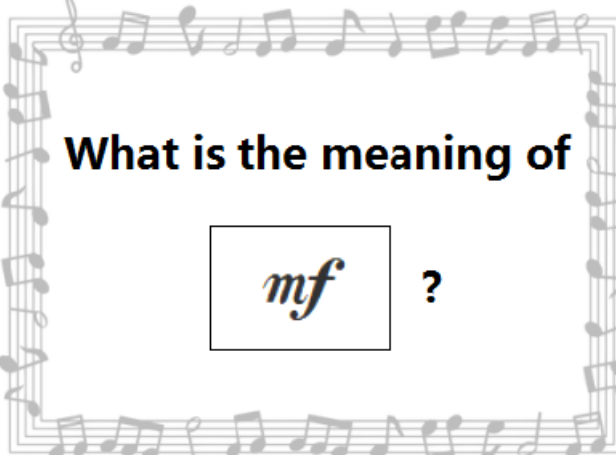
What is the meaning of

f ?



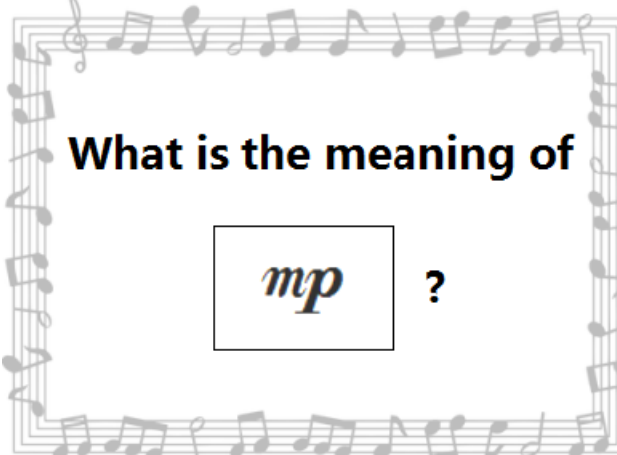
What is the meaning of

p ?



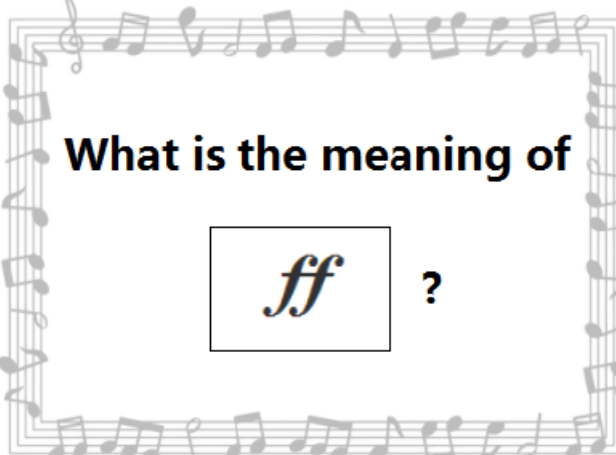
What is the meaning of

mf ?



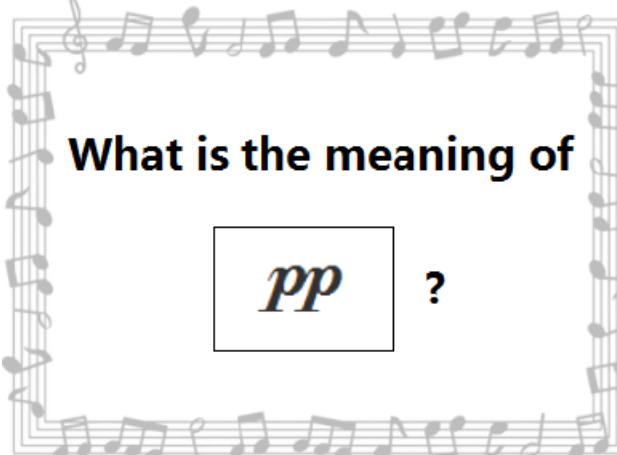
What is the meaning of

mp ?



What is the meaning of

ff ?



What is the meaning of

pp ?