



California Gold Farms

Sample 614-062223-041

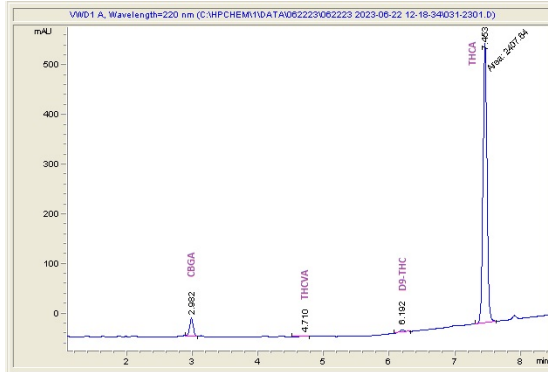
Exotic Gush Mintz

Sample Submitted: 06-22-2023; Report Date: 06-27-2023

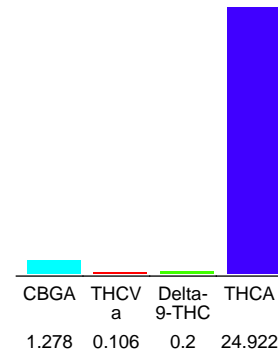
## Exotic Gush Mintz

Plant Material: Flower

### Chromatogram



### Cannabinoid Profile



### Cannabinoid Profile by HPLC

0.20%

Delta-9-THC

0.00%

CBD

26.51%

Total Cannabinoids

Cannabinoid	% wt	mg/g
CBGA	1.278	12.78
THCVa	0.106	1.06
Delta-9-THC	0.2	2.0
THCA	24.92	249.22
<b>Total Cannabinoids</b>	<b>26.51</b>	<b>265.1</b>
<b>Calculated Total THC</b>	<b>22.06</b>	<b>220.57</b>
<b>Calculated CBD Yield</b>	<b>0.00</b>	<b>0.00</b>
Calculated Total THC = Delta-9-THC + 0.877 * THCA		
Calculated Maximum CBD Yield = CBD + 0.877 * CBDA		

**Marin Analytics, LLC**

250 Bel Marin Keys Blvd, Suite D4  
Novato, CA 94949

833-321-TEST / info@marinanalytics.com

**Sara Biancalana**  
Chief Scientist

This sample has been tested by Marin Analytics, LLC using valid testing methodologies and a quality system. Values reported relate only to the sample tested. Marin Analytics, LLC makes no claims as to the efficacy, safety, or other risks associated with any detected or non-detected levels of any compounds reported herein. This Certificate shall not be reproduced except in full without the written approval of Marin Analytics, LLC. Copyright 2023 Marin Analytics, LLC All Rights Reserved.