

IDEAL'S DB TOWER

বাবুই

কোথা
বাসা
বোনে



IDEAL INFRASTRUCTURE
SOLUTIONS PVT. LTD

Registered office: 6, Eastern Parkm 3rd Road, Santoshpur
Kolkata -700 075
Phone ; +91 33 24416353/54/56/57 Telefax: +91 33 24416353
Local Cell no: +91 9007578544

LOCATION MAP



DEVELOPERS PROFILE



**IDEAL INFRASTRUCTURE
SOLUTIONS PVT. LTD**

Ideal Infrastructure Solutions Pvt Ltd (IIS), is an organization led by engineers, has been focused in development in the area of infrastructure with highest priority in engineering quality. Our activity is spread over West Bengal, Jharkhand and Orissa.

An engineer, especially experienced in precision building construction' will be there round the clock at site to ensure execution precisely as per design.

Besides, we will get the construction checked and approved by the design Architect and Structural engineer at each stage, tentatively once or twice a month.

All the above, at times add to cost which however is no deterrent to our endeavor.

For us, the name 'IIS' stands for,

- Unequivocal engineering dominance
- Unmatched reliance on quality
- Utmost desire to catch up time

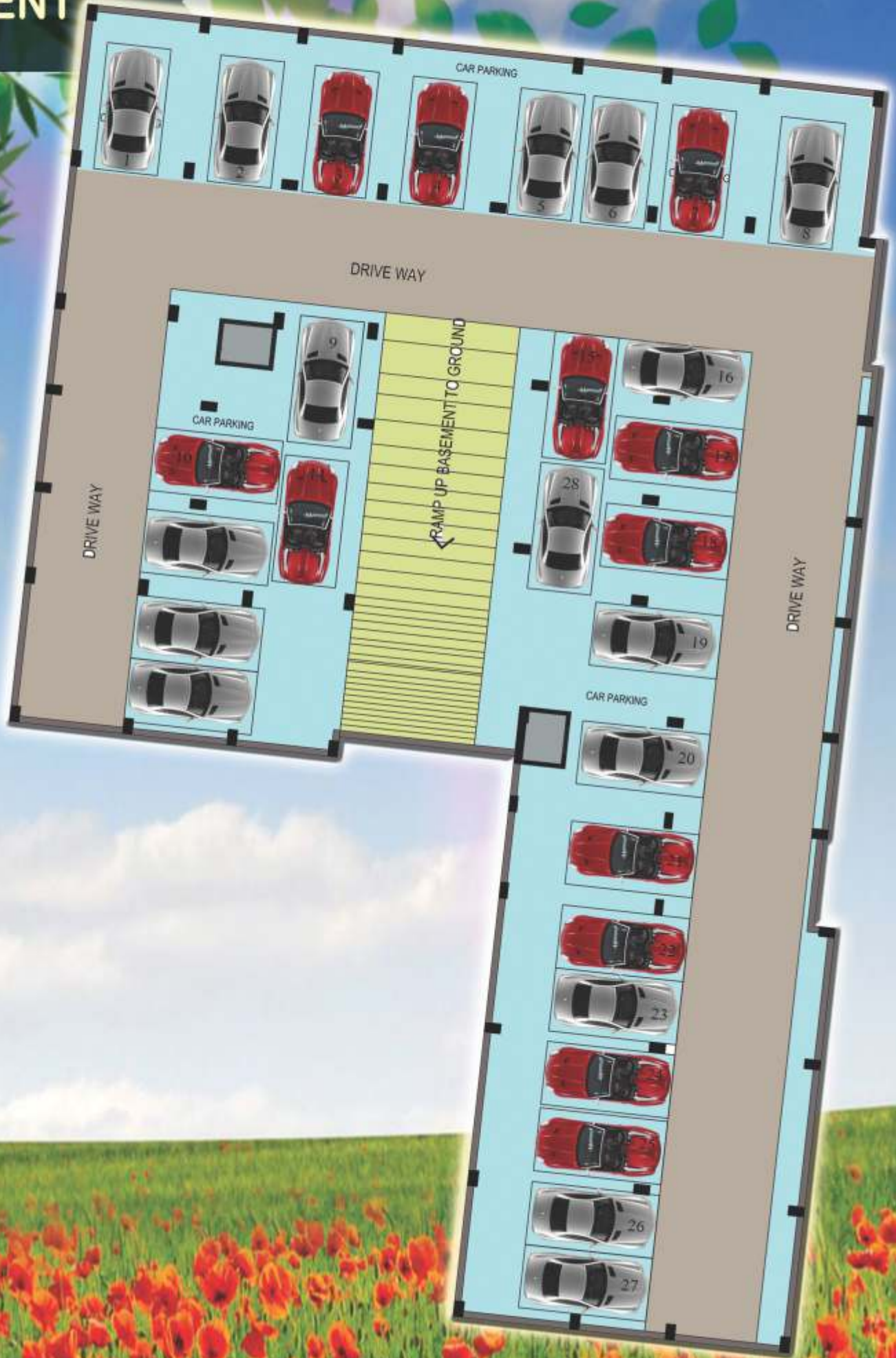
This site is located 'OPPOSITE OF
COOCH BEHAR POLYTECHNIC'.

The address of the site is:

Ideal's DB Tower
Cooch Behar-Siliguri Road
Ward No.-7
Cooch Behar Municipality
Cooch Behar-736101



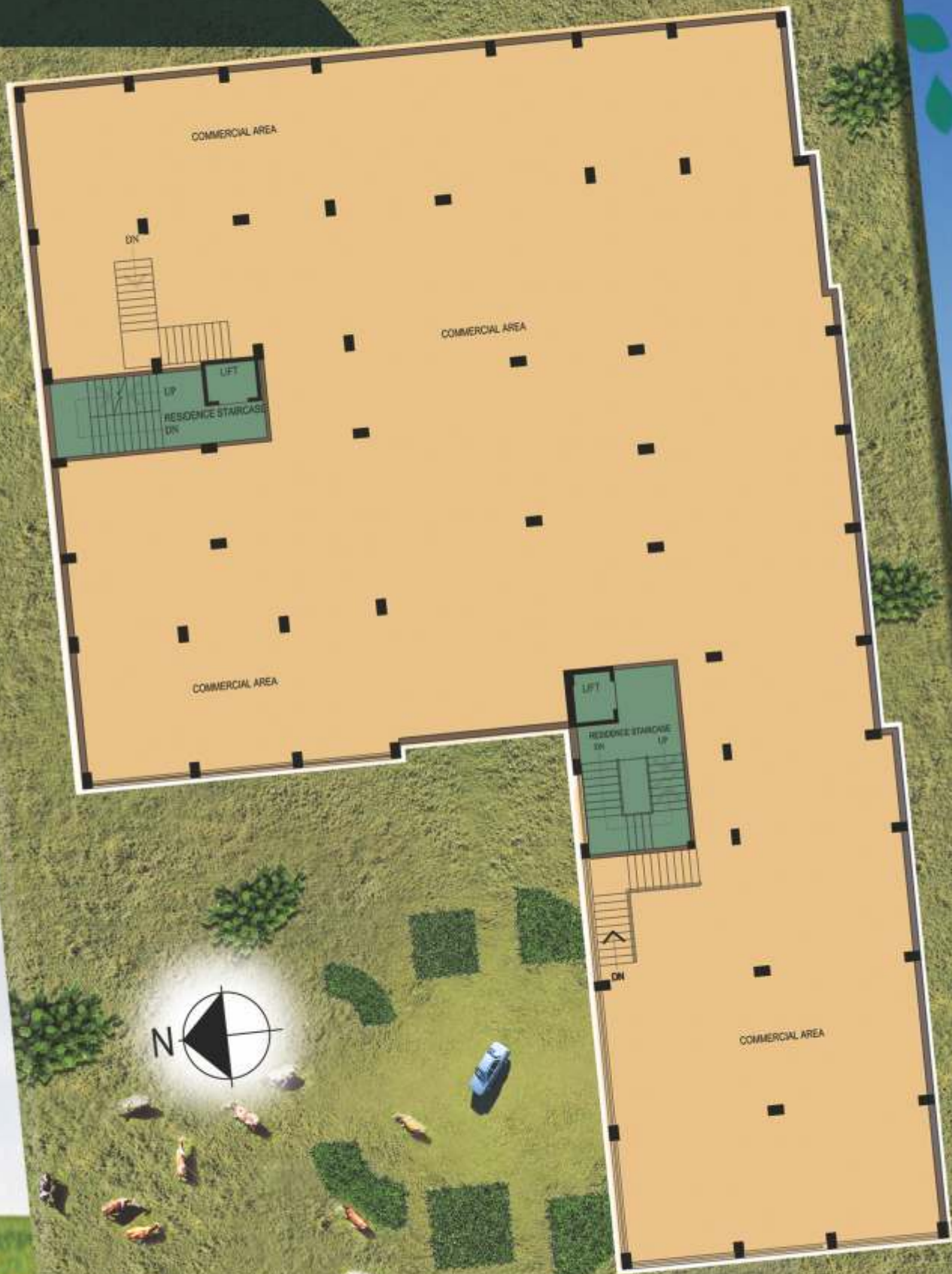
BASEMENT



GROUND FLOOR PLAN



FIRST FLOOR



TYPICAL FLOOR PLAN



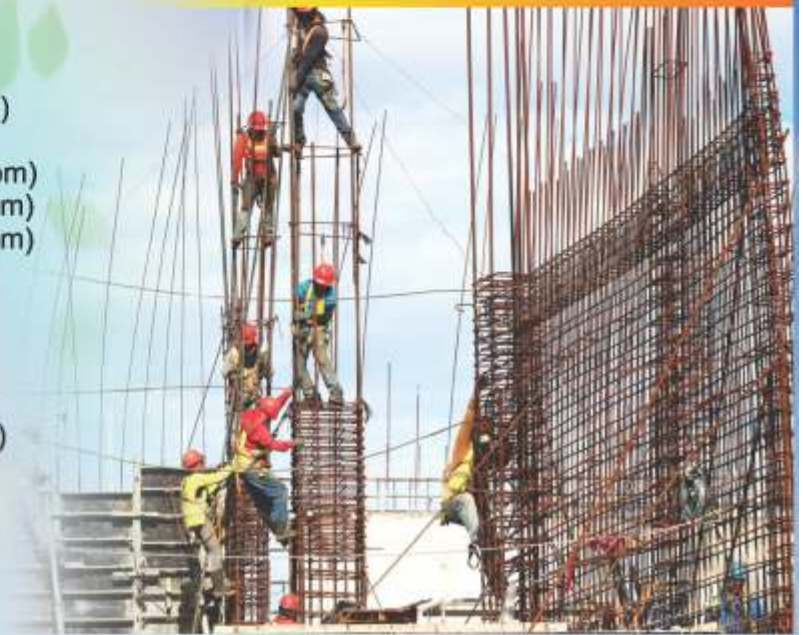
**INTERIOR
VIEWS**





SPECIFICATION

Foundation	RCC Foundation
Super Structure	RCC framed Structure as per Geo Technical Report IS CODE MAINTAINED EARTHQUAKE ZONE-(V) Protective Design
Slab Thickness Floor & Roof	125/100mm (Resi) X 125mm(Com)
External Brick Wall	125 & 250mm (Resi) X 125mm(Com)
Internal Brick Wall	125/75mm (Resi) X 125/75mm(Com)
Toilet Brick Wall	125/75mm (Resi) X 125/75mm(Com)
Floor	
Room	Floor tiles 2' X 2'-Virified (Resi) Floor tiles 2' X 2' (Com)
Kitchen	Floor Tile 2'x2', *Refer Note (Resi)
Toilet	Kota/Marble/Anti Skied Tiles (Resi) Kota/Marble (Com)
Stair	Kota/Marble
Cooking Platform	Black Granite
Door	
Main Door	TATA make steel Door (Resi) MS Rolling Shutter (Com)
Other Doors	Flush Door Shutter with both side commercial synthetic enamel paint finish/ TATA PRAVESH
Door Frame	Sal Wood.GI
Windows	Anodised Aluminium frame with sliding Glass Panel.
Misc.	
Stair Railing	MS/Aluminium
Roof Treatment	Water Proofing with Chemical
Rain Water Pipe	PVC , ISI Marked
Lift	Sized for 5/4 Persons with Manual door operation ,Make: (Otis/Kone)
Lift Fascia	Ceramic Tiles
Parapet Wall	Brick work ,RCC& MS Febrication
External Wall	Weather coat painting with priming coat over cement plastering on wall including RCC members



ARCHITECTS PROFILE

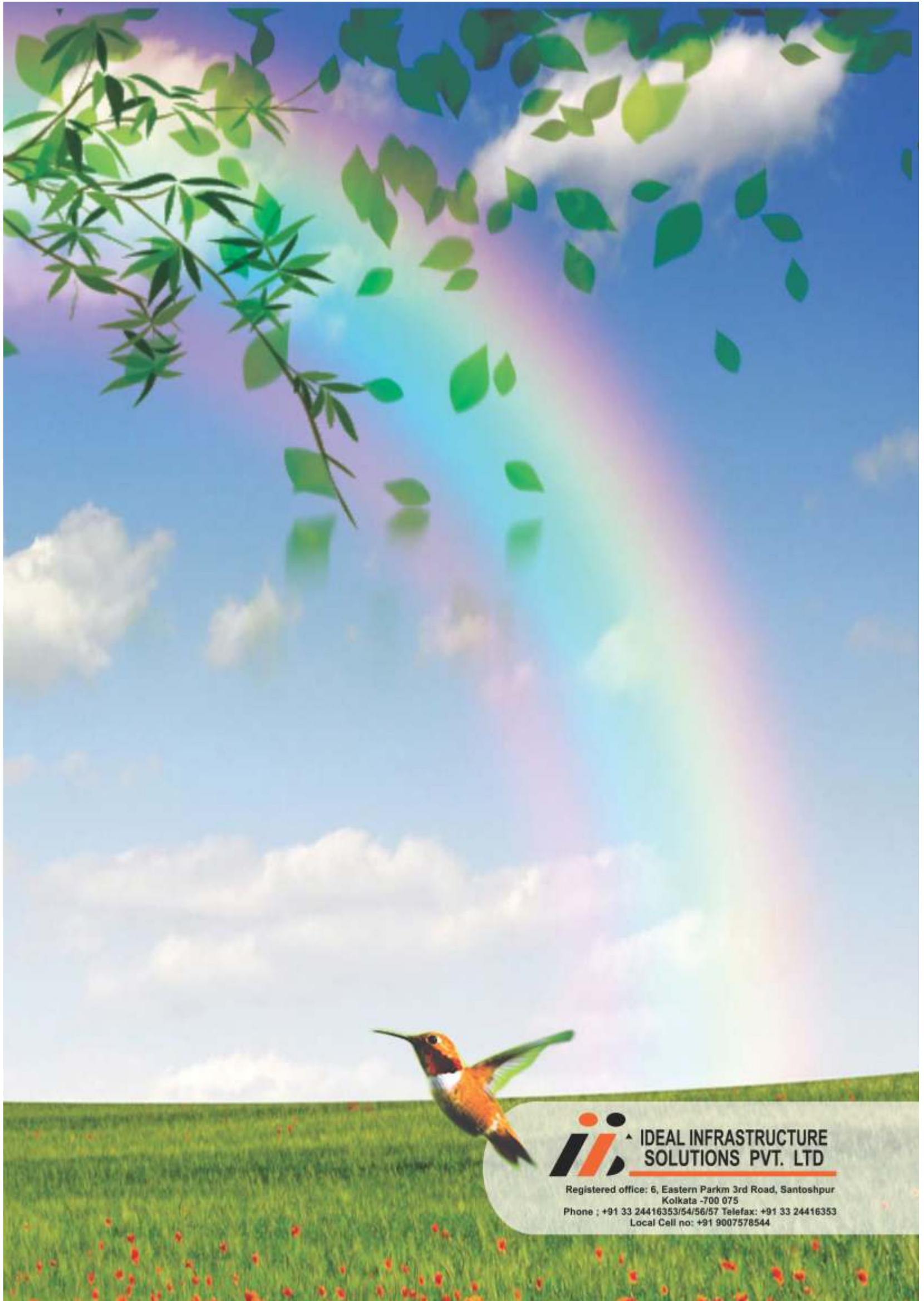
The INTEGRATED INFRASTRUCTURE SOLUTIONS

Group consists of and retains a highly professional Project Engineering Group specialised in the Planning, Design Engineering and Management of any type of Projects e.g. Industrial, Housing and Architectural Projects anywhere in the Country or Abroad.

The Group derives its strength from the fact that all its members are highly qualified and have adequate first hand experience in the related fields with reputed consultancy organizations. It may be specifically highlighted that the Group has close coordination amongst its members and they are committed to adhere to the strict delivery schedule as well as to maintain highest quality standards.

Apart from planning and design engineering the group has thorough experience in construction supervision and project management and they can take up Project Management assignment for any Project providing concept through commissioning services for the entire Project.





**IDEAL INFRASTRUCTURE
SOLUTIONS PVT. LTD**

Registered office: 6, Eastern Parkm 3rd Road, Santoshpur
Kolkata -700 075
Phone ; +91 33 24416353/54/56/57 Telefax: +91 33 24416353
Local Cell no: +91 9007578544