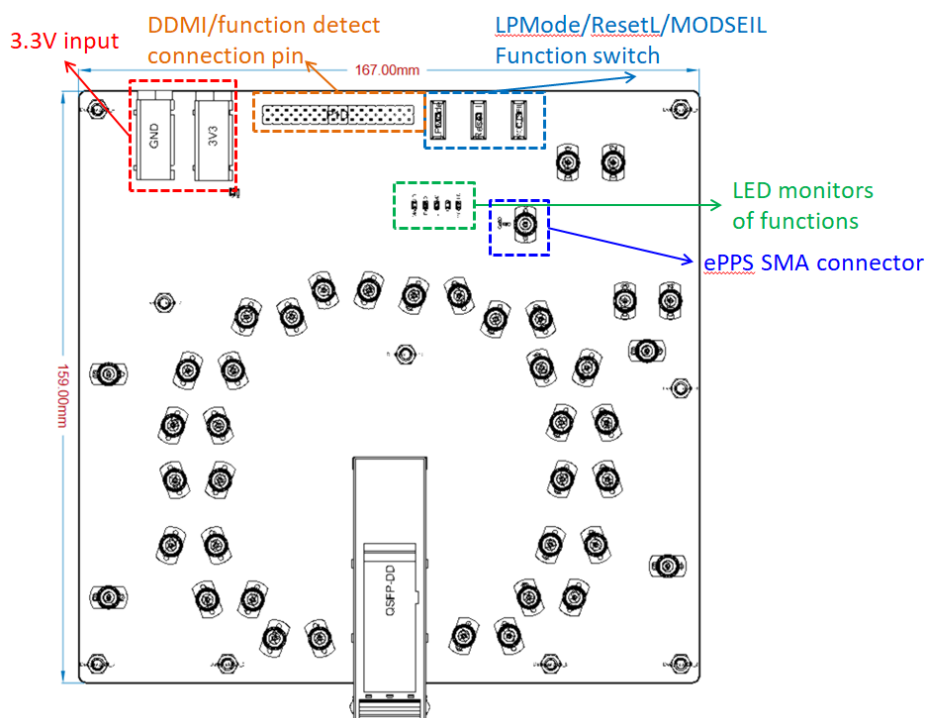
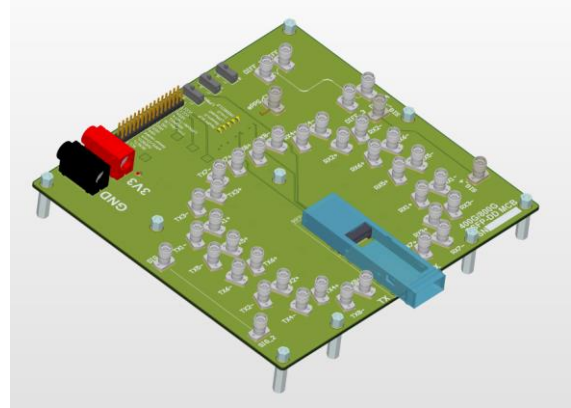


800G QSFP-DD Test Board

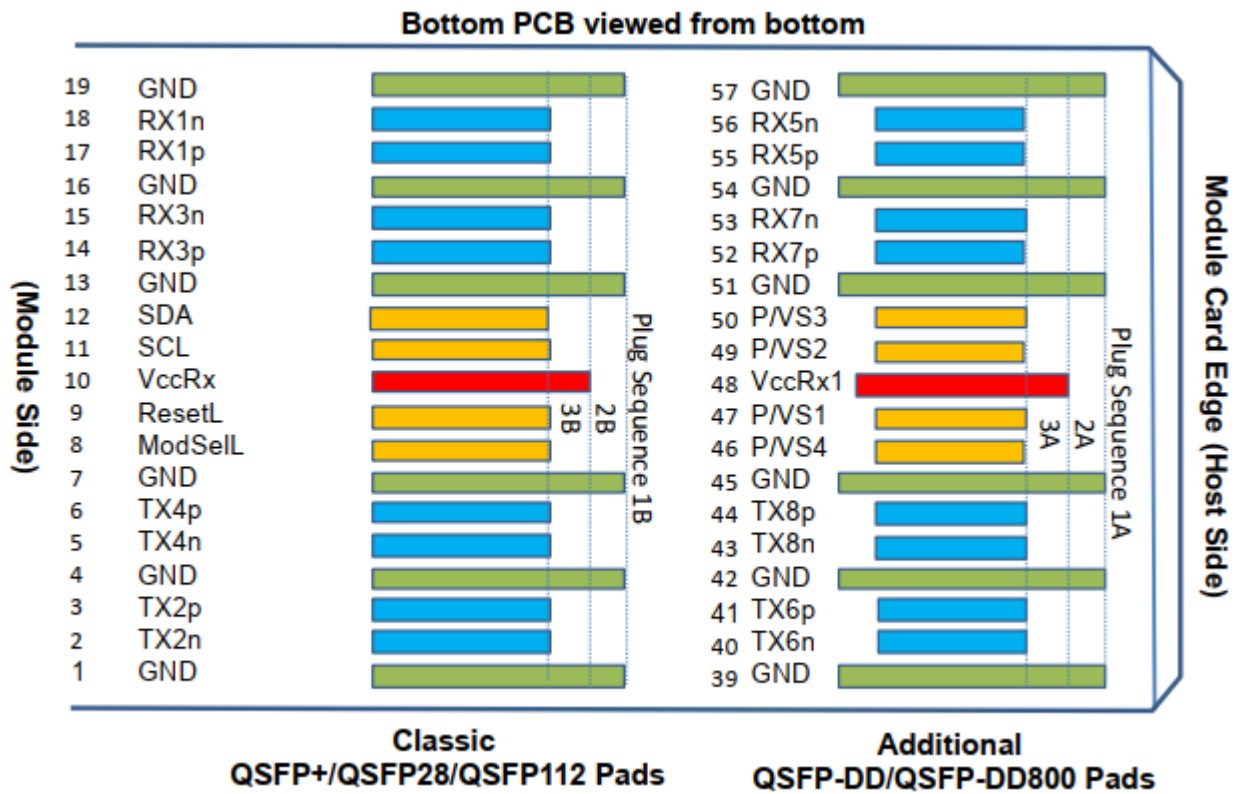
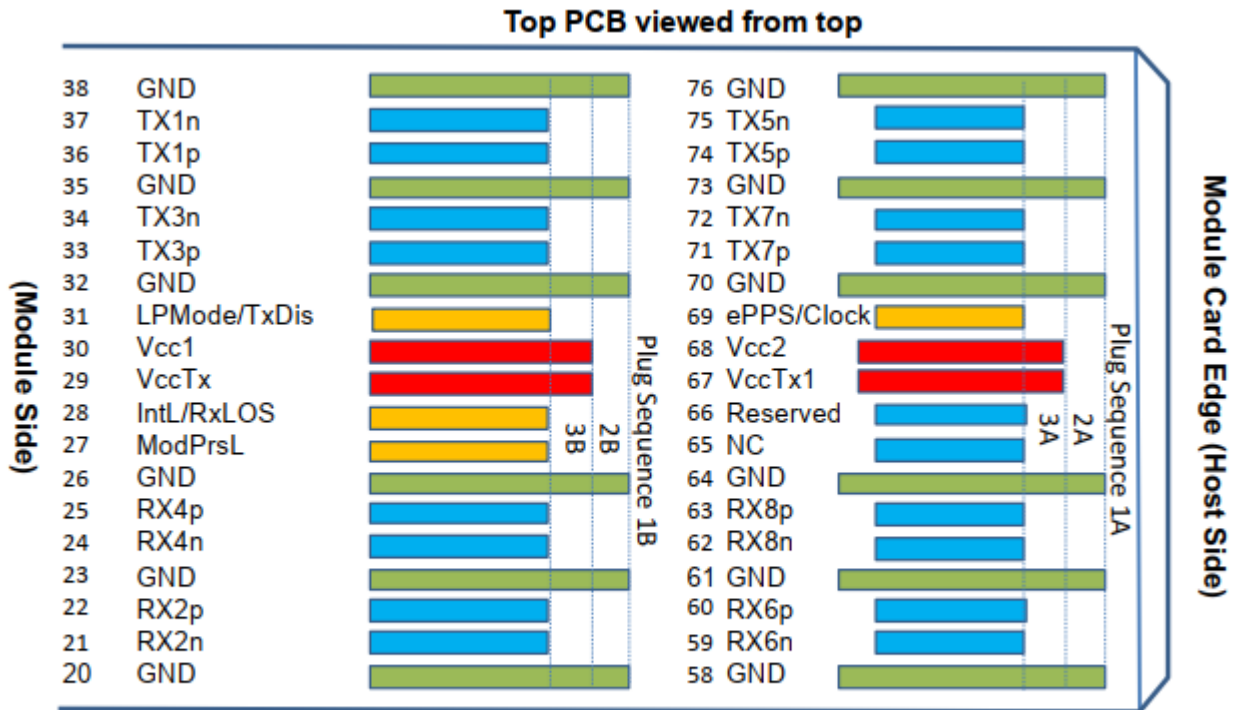
Part Name : LI-QSFP-DD-V-A2

- Operation Temp:-40~+85°C
- Support 200G/400G/800G QSFP-DD Transceiver
- CMIS Connection(I2C)
- Pin for Standard MSA
- 4mm Banana VCC input
- LED monitor(VCC/ModPrsL /LPMode/ResetL/MODSEIL/ IntL)
- 9 fixed columns
- VS1/VS2/VS3/VS4/ePPS/Reses69 for pin connection
- Support QSFP- DD cage
- ePPS SMA connector
- 2.92mm RF connector (Default)
- 90 degree RF cable assembly
- Board size:167x159mm
- Connector durability:100 cycles(min)



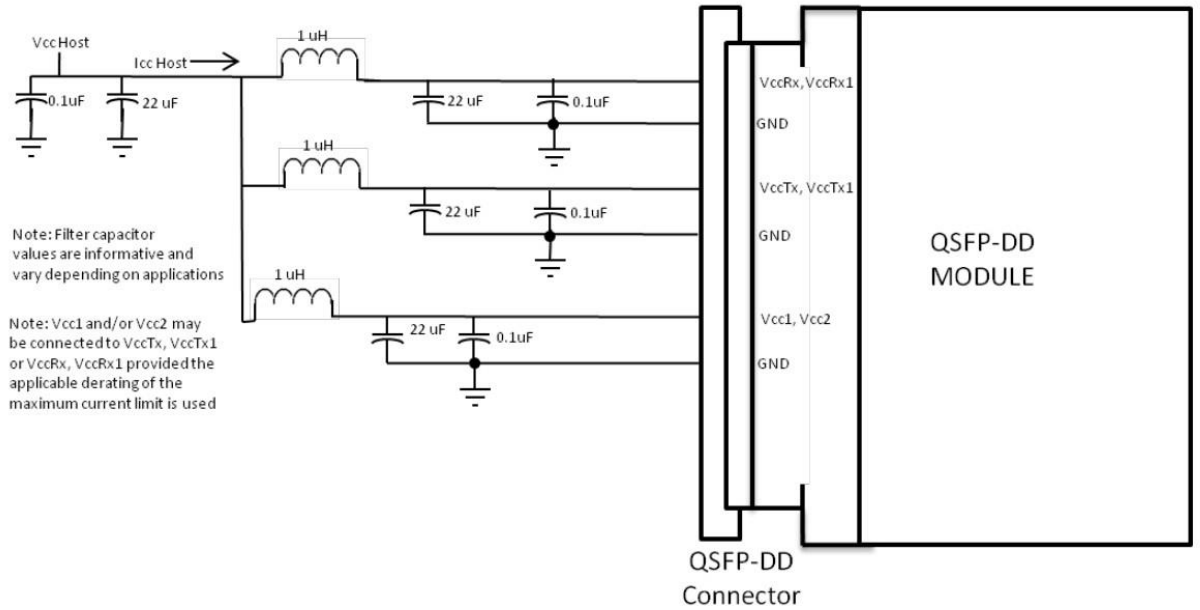


QSFP-DD module Pin definitions





Supply Filtering Network





Reference Schematic

