

# OFFICE OF THE GOVERNOR

## **California Agriculture Fair Season**



It is my pleasure to welcome you to the 2025 California fair season!

From the first fair of the season in February to the last in late October, fairgrounds across the state are busy planning for one of the largest events of the year. These annual fair events have so much to offer.

At the fair, you can expect to find the traditional corn dogs, cotton candy, and carnival rides. In addition to these delicious treats and fun entertainment, you can also enjoy competitions, exhibitions, and educational activities. Your participation as exhibitors helps promote the importance of agriculture and food production throughout our state.

Aside from the annual fair, California fairgrounds remain busy hosting a variety of other events throughout the year. Most of these events are fun and festive celebrations that represent the culture and diversity of the communities that surround the fairgrounds. However, our fairgrounds are also amongst the first to serve in times of despair during emergencies and evacuations.

As resiliency centers, our fairgrounds provide safe shelter and build community preparedness as hazards like wildfires, floods and extreme heat become longer lasting and more frequent in California. During disasters, the fairgrounds offer a place to stay with kitchen and sanitation facilities, showers, and other resources.

Our fairgrounds are so important for our communities and so are exhibitors and advocates like you! Thank you for your many contributions to the continued success of the fairgrounds.

Sincerely,

A handwritten signature in black ink, appearing to read "Gavin Newsom", written over a horizontal line.

GAVIN NEWSOM



**2025**

# **ADULT COMPETITIONS**

**BRING ENTRIES TO THE GRAPE BUILDING**

**Online Entry Registration Deadline:** Due on or Before Friday, May 30, 2025, by midnight online only.

**ALL EXHIBITS (*except food and flowers*) – GRAPE BUILDING**  
Received for Judging: **Friday, June 6th & Saturday, June 7th 2025, 10:00am - 6:00pm**

Food and Flower entries must be Received for Judging **Monday, June 16, 2025, 10:00am – 6:00pm.**

**ARTWORK RELEASED:** Monday, June 23rd, 2025 – 10:00am - 6:00pm (All exhibits must be picked up on Monday in the Grape Building). Items not picked up will be properly disposed of or donated to a charitable organization.

## DEPARTMENT RULES FOR ADULTS:

**LIMITS:** See each Division on entry limits.

1. Exhibitor must be a resident of Kings.
2. All entries must have been completed within the last two years and NOT previously exhibited at The Kings Fair. Entries are limited to residents of Fresno, Kings, and Tulare Counties unless otherwise specified
3. All articles must remain on display until the day after the Fair.
4. All exhibits must have been made by the exhibitor and may *not* have been previously entered in the Kings Fair.
5. Name or initial, month and year must be inscribed on the underneath side before firing.
6. Created from MOLDS. Any finished ceramic piece formed from a Mold and finished by exhibitor.
7. Entries are at the exhibitor's own risk. The utmost care will be given to all entries; however, The Kings Fair accepts no responsibility for loss, stolen or damage of any kind to any entry. Your completed online entry is the acceptance of this rule. There is a police presence on the grounds during the Kings Fair.
8. All works (fine art and photography) must be titled for identification purposes. Please have your name and the title on the back of your entry in case a tag falls off exhibit item.
9. The Kings Fair reserves the right to exclude entry, which is not in the best interest of the fair and reserves the right to disqualify any exhibitor(s) who conducts themselves in an inappropriate manner, without discussion or justification. No payment of any awards will be made to individuals who have been disqualified.
10. The American system of judging will be used.

## AWARDS

### Best of Show

Rosette and \$25.00

1st, 2nd, 3rd Place..... Ribbons

# ADULT FINE ARTS DEPARTMENT

## FINE ART RULES:

1. All entries must be framed or matted; exceptions are made for canvas & sculpture works.
2. Framed with wires and hooks. Exhibits must have proper hardware for hanging or exhibits cannot be judged. **No Sawtooth allowed for hanging.**
3. **Sculpture:** Large and delicate exhibit items may be handled and installed by the exhibitor during check-in on the floor area with the supervision of the Superintendent or Assistant Superintendent during receiving days.

**Limits:** 8 entries total, 2 items per class each must be different.

**DIVISION 100 - OIL PAINTINGS**

**DIVISION 101 - WATERCOLOR**

**DIVISION 102 - ACRYLIC**

**DIVISION 103 - DRAWING: Pastel, Pen, Ink, Pencil, Colored Pencils, or Charcoal**

**DIVISION 104 - Mixed Media:**

**Mixture of Mediums or Collage**

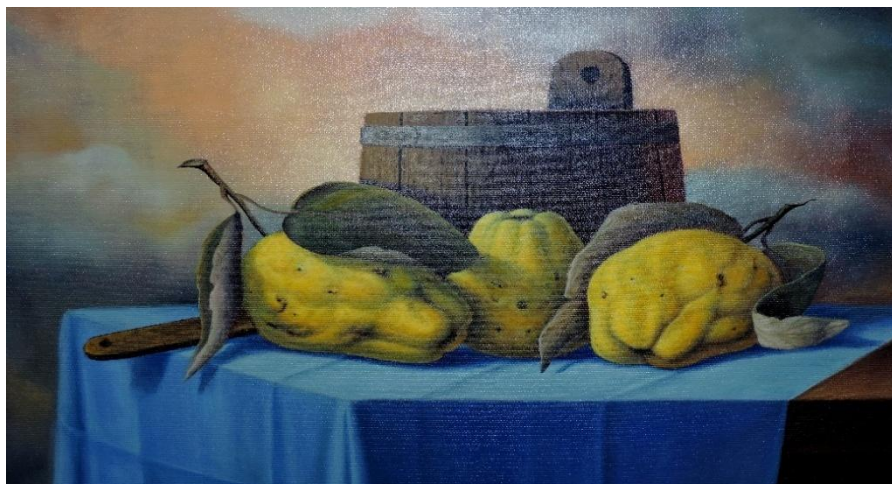
**DIVISION 105 - CARTOONING:**

**DIVISION 106 - DIGITAL ART: Created on an Electronic Device**

### Class:

1. Abstract
2. Animals (birds, dogs, etc.)
3. Buildings
4. Fair Theme

5. Floral
6. Landscape or Seascape
7. Miscellaneous
8. Portrait
9. Transportation



## DIVISION 107 - SCULPTURE: Clay, Ceramics and Porcelain Art

### Class:

1. Wheelwork
2. Hand Built - Original design
3. Underglaze
4. Glaze
5. Stains
6. Metal
7. Wood



## DIVISION 108 - CRAFTS

### Class:

- |  |  |
|--|--|
| <ol style="list-style-type: none"><li>1. Duct Tape Art</li><li>2. Mosaic</li></ol> | <ol style="list-style-type: none"><li>3. Papier-Mache</li><li>4. Decorative Painting</li><li>5. Origami</li><li>6. Other Unlisted Work</li></ol> |
|--|--|

# ADULT PHOTOGRAPHY DEPARTMENT

## RULES:

1. Pictures must have been taken within one year of the opening date of The Kings Fair.
2. **MATTED:** All entries must be no smaller than 5" x 7" and no larger than 14" x 18" photograph with a mat that goes at least 2" around the picture. No frames, hooks, wires, string, or tape. REQUIRED: Attach a 7/8" or larger sticky Velcro tape to the back of each corner of your mat. Use the prickly side of the Velcro and not the fuzzy side.
3. **FRAMED/CANVAS:** Entries can be of any size or length, including vertical or horizontal panoramic images. Please keep in mind that space is limited (nothing too large). Must have proper hardware for hanging (wires and hooks) or exhibit cannot be judged. All photographs must be framed unless your work is on a box frame that does not require a frame. This applies to adults and juniors.

**Limits:** 8 entries total, 2 items per class each must be different.

**DIVISION 120 - MATTED COLOR PHOTOGRAPHY**

**DIVISION 121 - MATTED BLACK & WHITE PHOTOGRAPHY**

**DIVISION 122 - FRAMED COLOR PHOTOGRAPHY**

**DIVISION 123 – FRAMED BLACK & WHITE PHOTOGRAPHY**

**Class:**

1. Action (anything in movement)
2. Agriculture (other than animals)
3. Animals (Farm, Wildlife, Zoo, and household pets)
4. Architectural
5. Fair Theme
6. Floral or Plants
7. Food
8. Landscape
9. Miscellaneous

10. State or National Parks
11. People
12. Portrait
13. Selfies
14. Sports
15. Sunrises or Sunsets
16. Travel
17. Transportation
18. Toys
19. Water Scenes (includes rivers, lakes, streams, or oceans as the predominant theme).



# ADULT HORTICULTURE & FLORICULTURE DEPARTMENT

## Rules:

1. All local and state rules apply pertaining to this department.
2. There will be a place provided for you to arrange your flowers before entering them.
3. If less than five (5) entries in a class, the Fair reserves the right to combine classes.
4. Risers, ground cover (humus, rock, chips) will NOT be provided by the fair.
5. Booth space will be allocated by the Building Supervisors after online entry deadline.
6. According to Section 13119 of the Health and Safety Code of the State, it is unlawful to decorate booths with any flammable material unless treated by a flame-retardant chemical as defined in Section 13115. There are many decoration materials on the market today that comply with the letter of the law.
7. Scorecard strictly enforced by judge. **Note:** Exhibits in the Floriculture Department must have been grown by the Exhibitor within the county of Kings, district or community represented by the Exhibitor, except classes for arrangements. Florists and nurseries may exhibit plants, plant material and flowers which they currently sell but do not necessarily grow. Only persons licensed to sell nursery stock may sell plant materials which have been incorporated in displays. **EXHIBITS MUST BE ADEQUATELY AND CORRECTLY LABELED AND THE RESPONSIBILITY OF THE EXHIBITOR, BEFORE JUDGING.** The judge will use the American system of 1<sup>st</sup>, 2<sup>nd</sup>, 3<sup>rd</sup>, 4<sup>th</sup> or 5<sup>th</sup> place according to merit; and if without merit, the judge shall make no award under any circumstances. This rule applies whether there are one or more entries in the class.

## SCORECARD:

### USE OF FLORICULTURE/ HORTICULTURE:

25% Must use floriculture (plants, flowers, fruits/vegetables, or agricultural commodities in the exhibit.

**EDUCATIONAL VALUE** - 25% Informative value through the use of signage, labeling, legends and/or any other manner in which information is conveyed to the public.

**INGENUITY** – 20% Cleverness and skill in design and/or contrivances used to illustrate or represent (such as characters, miniatures, photographs, models, etc.)

### DIVISION 130 - HERBS

**ATTRACTIVENESS** - 10% Effective use of composition, animation, color and/or other exhibit aids to enhance appearance create interest and invite closer inspection.

**LIGHTING** - 10% Added dramatic effects, color and/or techniques enhancing the exhibit.

**EXHIBIT THEME** - 10% Thought or idea expressed by design or feature of the exhibit, i.e.: fair theme, city characteristics, etc.



Plate Display (At least 4-6" Cuttings)

**Class**

- |                          |                                |
|--------------------------|--------------------------------|
| 1. Cut herb, sage        | 5. Cut herb, dill              |
| 2. Cut herb, oregano     | 6. Cut herb, parsley           |
| 3. Cut herb, sweet basil | 7. Cut herb, any other variety |
| 4. Cut herb, rosemary    | Vegetables                     |

Entries Must Be Home Grown Vegetables

Plate Display: Six (6) - Small, Three (3) - Large

**DIVISION 131- VEGETABLES**

**Class**

- |                       |                                       |
|-----------------------|---------------------------------------|
| 1. Beans, Any variety | 11. Peppers (Chile - any variety)     |
| 2. Beets              | 12. (12) Peppers (bell – any Variety) |
| 3. Carrots            | 13. Potatoes                          |
| 4. Cucumbers          | 14. Pumpkin                           |
| 5. Egg Plant          | 15. Radishes                          |
| 6. Garlic             | 16. Squash                            |
| 7. Onions (purple)    | 17. Tomato                            |
| 8. Onions (white)     | 18. Tomato, Cherry                    |
| 9. Onions (yellow)    | 19. Any Other                         |
| 10. Onions (green)    |                                       |

The display must consist of no more than **10** and no less than **5** home grown fruits, nuts, vegetables, and herbs. To be displayed decoratively in an open basket where all products can easily be viewed. A 5x7 card naming all varieties clearly printed or typed must be included.





## **DIVISION 132- FRESH FRUIT**

### **Class**

- |                             |                  |
|-----------------------------|------------------|
| 1. Apples                   | 7. Nectarines    |
| 2. Apricots                 | 8. Peaches       |
| 3. Blueberries              | 9. Plums         |
| 4. Figs                     | 10. Strawberries |
| 5. Grapes - 2 small bunches | 11. Watermelon   |
| 6. Melon, Cantaloupe        | 12. Any other    |

Entries Must Be Home Grown & Home Dried

Plate Display: Six (6) to Eight (8) – Small, Four (4) to Six (6) - Large

## **DIVISION 133 - DRIED FRUIT**

### **Class**

1. Peaches
2. Apricots
3. Any Other Not Listed

Entries Must Be Home Grown & Home Dried

Plate Display: Six (6) to Eight (8) – Small, Four (4) to Six (6) - Large

## **DIVISION 134 - POTTED PLANTS**

### **Class**

- |   |   |
|---|---|
| 1. Begonia, Any                             | 13. Potted Vines, Ivy                           |
| 2. Cacti, Any                               | 14. Schefflera                                  |
| 3. Coleus, Single Plant                     | 15. Spider Plant, Green Foliage                 |
| 4. Coleus, 3 Plants, 1 Variety, 1 Container | 16. Spider Plant, Variegated Foliage            |
| 5. Creeping Charlie or Swedish Ivy          | 17. Succulent, Single                           |
| 6. Fern, Any                                | 18. Succulent, 3 or more                        |
| 7. Geranium, Any                            | 19. Wandering Jew                               |
| 8. Impatiens, Any                           | 20. Any Other Potted Plant, Upright, Not Listed |
| 9. Nephthys's or Arrowhead Vine             | 21. Any Other Potted Plant, Hanging, Not Listed |
| 10. Patio Delight (5 plants unit)           |   |
| 11. Sejo Palm                               |   |
| 12. Any Palm                                |   |

(All Natural Dried Materials) Accessories Permitted  
**Scorecard**

Design ..... 40% Color Harmony ..... 20%  
Distinction..... 20% Expression..... 20%

**DIVISION 135 - DRY MATERIAL ARRANGEMENTS**

**Class**

1. The High Road (Horizontal)
2. Petite Beauty (Under 8")
3. Fair Theme

**DIVISION 136 - SILK FLOWER ARRANGEMENTS**

**Class**

1. Special Day (holiday, anniversary, birthday, etc.)
2. Just One Color
3. Fair Theme

**DIVISION 137 - FRESH, DRY OR COMBINATION**

(Fresh material should NOT be treated)

**Class**

1. The Very Best (All Fresh)
2. Continuity (3 Containers)
3. Fair Theme

**DIVISION 138 - SHRUBS, VINES AND TUBEROUS BULBS (1 Stem)**

**Class**

- |                                      |                                 |
|--------------------------------------|---------------------------------|
| 1. Agapanthus                        | 8. Hydrangea, Any Variety       |
| 2. Canna, Any                        | 9. Japanese Iris, Any           |
| 3. Sahibs, Jumbo                     | 10. Rose of Sharon, Any 1       |
| 4. Sahibs, Standard                  | 11. Bottle Brush                |
| 5. Gerbera                           | 12. Day Lily, Any               |
| 6. Gardenia                          | 13. Any Other Flower Not Listed |
| 7. Flowering Shrub/Tree (Not Listed) |                                 |

## **DIVISION 139 - ANNUALS & PERENNIALS (3 Stems)**

### **Class**

1. Carnations
2. Celosia
3. Coreopsis
4. Cosmos
5. Gloriosa Daisy
6. Marguerite
7. Marigold, Giant
8. Petunia, Any
9. Salvia
10. Shasta Daisy, Any
11. Statice, Any Color
12. Vinca, Any Color
13. Zinnias, Any
14. Yarrow
15. Any Other Cut Flower (Not Listed)

## **DIVISION 140- NOVICE CUT ROSES** *Limited to exhibitors who have never won a blue ribbon in Cut Roses*

### **Class**

1. Hybrid Tea, 1 Bloom, Any Color
2. Any Other Rose, 1 bloom or spray, Any Color

## **DIVISION 141 - CUT ROSES**

### **Class**

1. Floribunda, Any Color, 1 spray
2. Hybrid Tea, Any Color, 1 bloom
3. Grandiflora, Any Color, 1 bloom
4. Roses, Any, 3 Different Colors
5. Miniature Cycle of Bloom, Any Color
6. Miniature, Any Color, 1 bloom
7. Climber, Any Color, 1 bloom or 1 spray
8. Single Petal Variety, Any Rose with 5-12 petals, Any Color, 1 bloom or 1 spray
9. Most Fragrant, Any Type of Rose, Any Color (60 pts of scoring will be for fragrance).

## **DIVISION 142 - FRESH ROSE ARRANGEMENTS**

### **Class**

1. Red, White & Blue
2. Fair Theme
3. Coming Up Roses (All Roses)

## DECORATIVE CONTAINERS

### **DIVISION 143 - MAILBOX, BIRDHOUSE**

#### **Class**

1. Wood
2. Any other

### **DIVISION 144 - Recycled Material**

#### **Class**

1. Stepping stones
2. Figurines

### **DIVISION 145 - TERRA COTTA, WOOD, OR OTHER MATERIAL**

#### **Class**

1. Terra Cotta, Wood
2. Clay
3. Any other



# ADULT CLOTHING AND TEXTILES DEPARTMENT

**Limits:** Unlimited entries. Each must be different and description field online.

## Division 150 – Sewing, Wearable Apparel

### Class

1. Sleepwear, Any
2. Children's Clothes
3. Women's Clothes
4. Men's Clothes
5. Coordinated Outfit, any type
6. Formal Attire, any
7. Costume
8. Handbags
9. Hats, Scarves and Accessories
10. Dolls or Doll clothes
11. Any item not listed above

## Division 151 – Knitted, Wearable Apparel

## Division 152 - Crocheted- Wearable Apparel

### Class

1. Vest
2. Shawl, Cape or Poncho
3. Sweater, Pullover or Cardigan
4. Toy, Doll, or Doll Clothing
5. Cap or Hat
6. Tank Top Scarf
7. Purses or bag
8. Socks or Slippers
9. Gloves, Mittens or Scarf
10. Infant or children's clothes
11. Any other Accessories not listed above

## Division 153 - Home Furnishing

### Class

1. Pillows
2. Tablecloth
3. Pillow Slips
4. Place Mats, set of 4
5. Potholders, set of 2
6. Dish Towels, set of 2
7. Apron
8. Any other item not listed, Kitchen
9. Any other item not listed, Bathroom
10. Any other item not listed, Bedroom



Open to quilters of Kings, Tulare, and Fresno Counties. Quilts must have been completed in the past two (2) years and may not have been previously entered in The King's Fair. Please specify size and pattern in the description field online.

**Quilts made by groups not eligible.**

**Limit:** 1 entry per class

**Division 154 – Machine Quilted by Exhibitor**

**Division 155 – Machine Quilted by Professional Class**

- |  |  |
|--|--|
| 1. Miniature quilt not over 18"x24"                                |  |
| 2. Table Runner  | 10. Mixed media quilt or wall hanging    |
| 3. Baby quilt, crib size   | 11. Hand quilt with hand embroidery      |
| 4. Youth quilt   | 12. Hand quilted with machine embroidery |
| 5. Wall Hanging, not over 60"x 85"                                 | 13. Any size quilt made from a kit       |
| 6. Appliqued quilt   | 14. Prairie stitched/big stitch quilt    |
| 7. Whole cloth quilt   | 15. Embellishments                       |
| 8. Friendship quilt (Blocks made by a group) quilted by individual | 16. Pillow                               |
| 9. Original Design quilt   | 17. Placemats, set of 2                  |
|  | 18. Any other quilt not listed above     |

**Limit:** 1 entry per class

**Division 156 – Rag Quilts and Tie Comforters**

**Class**

- |                           |                                    |
|---------------------------|------------------------------------|
| 1. Rag Quilt, quilted     | 3. Tied Comforters                 |
| 2. Rag Quilt, not quilted | 4. Any other item not listed above |

**Limit:** 1 entry per class

**Division 157 - Afghans**

**Class**

- |            |                         |
|------------|-------------------------|
| 1. Crochet | 4. Square               |
| 2. Knitted | 5. Infants              |
| 3. Ripple  | 6. Any Other Not Listed |



**Limit:** Unlimited entries. Each must be different and description field online.

### **Division 158- Needlework**

#### **Class**

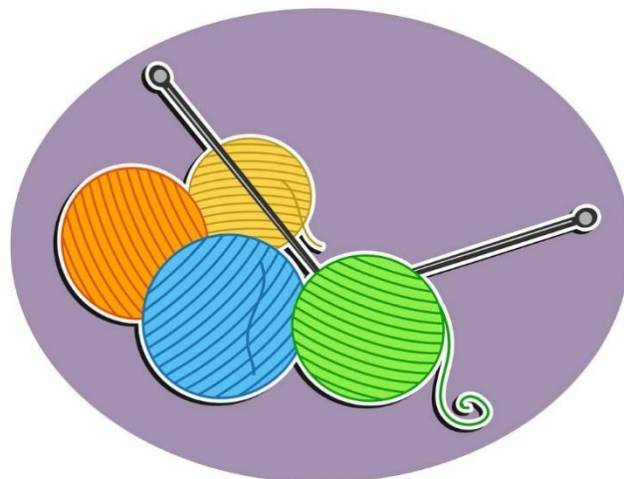
1. Needlepoint articles
2. Hand Embroidered articles
3. Machine Embroidered articles
4. Counted cross stitch
5. Cross stitch articles
6. Latch Hook Articles
7. Plastic Canvas Articles
8. Crewel stitch articles
9. Stitchery articles
10. Any embroidered items not listed above

**Limit:** Unlimited entries. Each must be different and description field online.

### **Division 159 - Crochet**

#### **Class**

1. Baby Blanket
2. Bedspread
3. Tablecloth
4. Articles with crocheted trim
5. Doily
6. Dresser Scarf
7. Pillow, stuffed
8. Potholder, set of 2
9. Any other Kitchen item - describe in description field online



# ADULT CRAFTS AND HOBBIES DEPARTMENT

**Limits:** 3 entries per class

## Division 160 - Crafts

### Class

1. Christmas decorations
2. Any other Holiday decorations
3. Basketry
4. Decoupage
5. Glass Work
6. Plaster craft
7. Doll and Doll Clothes
8. Hand painted China
9. Stained Glass
10. Recycled item - must include a before photo

### Rules:

1. Each individual page must be in a plastic sleeve to be hung for display
2. Stamps can be used for cards, invitations, gift bags, tags, or boxes.

**Limit:** 6 different entries each to be listed separately by name. Different means unlike in material, layout, and design.

## Division 161 – Scrapbooking and Stamping

### Class

1. Single Page - designed by the exhibitor
2. 2-page layout - designed by the exhibitor
3. Decorated Scrapbooking Album - minimum of 6 pages
4. Art Shadow Box - made with scrapbooking materials
5. Digital Scrapbooking - using a personal computer, digital or scanned photos and computer graphics software. No Kits allowed.
6. Cards and Invitations - can use stamps
7. Gift bags, tags, or boxes - can use stamps

## Division 162 - Beadwork

### Class

1. Jewelry
2. Picture
3. Purse
4. Other Beadwork not listed

## Division 163 - Leather

### Class

1. Arrow Quiver/Gun Holster
2. Braided Items
3. Man's Belt, Wallet, or Bags
4. Miniature Item
5. Picture/Wall Hanging
6. Saddle
7. Woman's Belt, Wallet, or Bag
8. Other Leather work not listed

## Division 164 - Woodcraft

### Class

1. Animals, any
2. Caricature
3. Groups of Figures
4. Relief Carving
5. Walking Sticks and Canes
6. Other types of Carving



## Division 165 - Woodworking

### Class

1. Birdhouse
2. Burl Items
3. Furniture Items - restored or refinished
4. Furniture Items original design, no copy or adaptation
5. Holiday Decorations
6. Mailboxes
7. Toys
8. Wood Burning
9. Other Woodcraft items not listed

**Limit:** Unlimited entries. Each must be different and in description field online.

## Division 166 – Metal Work

### Class

1. Birdhouse
2. Mailboxes
3. Toys
4. Wind Chimes
5. Recycled item - must include a before photo
6. Another metalwork not listed

**Limits:** 1 Entry Per class

**Rules:**

1. MENU CARD MUST BE DISPLAYED
2. Centerpiece must be made by Exhibitor(s). It may not be pre-made or purchased, although items within it may be purchased.
3. Since Fair Management cannot be responsible for loss or breakage, members are encouraged not to include valuable items in the exhibit.
4. No SHARP KNIVES may be displayed.
5. Each individual or group will be allowed 30 minutes to set up their area.
6. Each Individual or Group may not start till everyone, and all materials and supplies are there.

**Division 167 – Table Setting**

**Class**

1. **New** -Disney Movie Theme
2. Holiday
3. Fair Theme



# ADULT FOOD DEPARTMENT

**Limit:** 12 entries total - Each entry must be a different product, or the same product preserved by a different method

## Rules

1. Online entry must list the type of product (in the description field, fruit, vegetable, preserves, etc.) and the method or process used (canning, one container for drying). Low acid foods must be canned under pressure. Dried products should be wrapped in clear plastic or sealed in jars for canning, one container for drying, except for jerky (six strips) and dried fruit (six sections.)

2. Entries must be labeled with product name, the date of preparation, processing method and processing time (i.e., apricot jam, pectin method; apricot halves, water bath processed; frozen green beans, blanched one minute, to be used with three months).

### 3. NO PARAFFIN SEALS

4. All home canned foods must have been prepared within a one-year period prior to judging date.

5. Entry consists of **TWO** jars (except where otherwise specified) of each product entered. One jar will be opened for judging the other for display.

6. All entries must be canned using the same brand of jar and lid. New screw rings must be used.

## Division 168 – Preserved Food

### Class

- |                                      |   |
|--------------------------------------|---|
| 1. Jelly                             | 7. Tomato Based Products                |
| 2. Jam                               | 8. Sauces/Syrups                        |
| 3. Marmalades and Butter Conserves 4 | 9. Salsa                                |
| 4. Canned Fruits                     | 10. Honey                               |
| 5. Canned Vegetables                 | 11. Dried Food - one jar or bag allowed |
| 6. Pickled Foods                     | 12. Miscellaneous - not listed above    |

**Limit:** 3 entries per Class - each must be different and described in the description field.

## **Division 169 – Baked Foods and Confections**

### **Class**

1. Yeast Bread ½ loaf plus 1 slice
2. Yeast Biscuits or Rolls ½ dozen
3. Non -Yeast Biscuits or Rolls ½ dozen
4. Cake ½ cake plus 1 slice
5. Cookies ½ dozen
6. Brownies ½ dozen
7. Fudge ½ dozen
8. Candy ½ dozen
9. Quick Bread ½ loaf plus 1 slice
10. Cupcake ½ dozen
11. Pie or Pastries ½ pie plus 1 slice or ½ dozen





**Registration Deadline for Contest is due: Friday, May 30, 2025, by midnight.**

**All Entries must be Received for Judging Friday, June 6th & Saturday, June 7th, 2025, 10:00pm - 6:00pm**

All Exhibits Released: Monday, June 23rd, 2025, 10:00am - 6:00pm. All unclaimed exhibits and awards will be recycled or donated to a charitable organization after Monday, June 23rd.

## CONTESTS

**ADULT CONTESTS** - All ages 19 and above compete in the same divisions.

**AWARD:** Rosette and \$50.00

**Limit:** 1 entry per class

**Rules:**

1. Recycled aprons will need to include a **before and after photo**. (Bring with entry)
2. This entry must be different from clothing and Crafts Divisions.

**Division 180 – Adult Apron Contest**

**Class**

1. Decorated apron
2. Sewn apron
3. Recycled apron

**AWARD:** Rosette and \$50.00

**Rules:**

1. Limited to one entry per exhibitor per class
2. Fabric must be 100% cotton. Describe content in the description field.

**Limit:** One entry per class

**Division 181 - 100% Cotton Contest Adult Sewing Contest**

**Class**

1. Single item
2. Coordinated item