



**2024**

## **HOME ARTS DEPARTMENT**

**(Adult & Senior Competitions)**

### **ADULT HOME ARTS**

BRING ENTRIES TO THE ROSE BUILDING

**Online Entry Registration Deadline:** Due on or Before Sunday, May 19, 2024, by midnight online only.

**ALL EXHIBITS - TAKE TO ROSE BUILDING HOME ARTS, CRAFT EXHIBITS AND FOOD PRESERVATION** Received for Judging: **Wednesday, May 29, 2024, 10:00am - 6:00pm and Thursday, Thursday 30, 2024, 10:00am - 6:00pm**

Table Setting must be Received for judging **Thursday, May 30, 2024, 10:00am – 6:00pm.**

Food entries must be Received for Judging **Monday, June 10, 2024, 10:00am – 6:00pm.**

**ARTWORK RELEASED:** Monday, June 17, 2024 – 10:00am - 6:00pm (All exhibits must be picked up on Monday in the Fine Arts Building). Items not picked up will be properly disposed of or donated to a charitable organization.

## DEPARTMENT RULES FOR ADULTS AND SENIORS:

**LIMITS:** See each Division on entry limits.

1. Exhibitor must be a resident of Kings County (or a Bonafide member of a Kings County farm organization).
2. All articles must remain on display until the day after the Fair.
3. All exhibits must have been made by the exhibitor and may *not* have been previously entered in the Kings Fair.
4. Name or initial, month and year must be inscribed on the underneath side before firing.
5. Created from MOLDS. Any finished ceramic piece formed from a Mold and finished by exhibitor.
6. The American system of judging will be used.

## CLOTHING AND TEXTILES

### SEWING - Wearable Apparel

#### AWARD

##### **Best of Show**

Rosette and \$25.00

**Limits:** Unlimited entries. Each must be different and description field online.

#### **Division 401**

##### **Class**

1. Sleepwear, any
2. Children's clothes
3. Women's clothes
4. Men's Clothes
5. Coordinated Outfit, any type
6. Formal Attire, any
7. Costume
8. Handbags
9. Hats, Scarves, and Accessories
10. Dolls or Doll clothes
11. Any item not listed above

# KNITTED AND CROCHETED WEARABLE APPAREL

## KNITTED -Wearable Apparel

### AWARD

#### **Best of Show**

Rosette and \$25.00

**Limits:** Unlimited entries. Each must be different and description field online.

### **Division 402**

#### **Class**

- |                                  |  |
|----------------------------------|--|
| 1. Vest                          | 8. Tank Top Scarf                          |
| 2. Shawl, Cape, or Poncho        | 9. Purses or bag                           |
| 3. Slippers                      | 10. Socks                                  |
| 4. Sweater, Pullover or Cardigan | 11. Gloves or Mittens                      |
| 5. Toy, Doll, or Doll Clothing   | 12. Jewelry                                |
| 6. Cap                           | 13. Infant or children's clothes           |
| 7. Hat                           | 14. Any other Accessories not listed above |

## CROCHETED- Wearable Apparel

### AWARD

#### **Best of Show**

Rosette and \$25.00

**Limits:** Unlimited entries. Each must be different and description field online.

### **Division 403**

#### **Class**

- |                                  |  |
|----------------------------------|--|
| 1. Vest                          | 8. Tank Top Scarf                          |
| 2. Shawl, Cape, or Poncho        | 9. Purses or bag                           |
| 3. Slippers                      | 10. Socks                                  |
| 4. Sweater, Pullover or Cardigan | 11. Gloves or Mittens                      |
| 5. Toy, Doll, or Doll Clothing   | 12. Jewelry                                |
| 6. Cap                           | 13. Infant or children's clothes           |
| 7. Hat                           | 14. Any other Accessories not listed above |

# HOME FURNISHED

## AWARD

### Best of Show

Rosette and \$15.00

**Limit:** Unlimited entries. Each must be different and description field online.

### Division 405

#### Class

1. Pillows
2. Tablecloth
3. Pillow Slips
4. Place Mats, set of 4
5. Potholders, set of 2
6. Dish Towels, set of 2
7. Apron
8. Any other item not listed, Kitchen
9. Any other item not listed, Bathroom
10. Any other item not listed, Bedroom



## QUILTS, COMFORTERS & WALL HANGINGS

Open to quilters of Kings, Tulare, and Fresno Counties. Quilts must have been completed in the past two (2) years and may not have been previously entered in The King's Fair. Please specify size and pattern in the description field online.

**Quilts made by groups not eligible.**

### AWARDS

#### **Best of Show**

Rosette and \$25.00

#### **Best of Division**

Rosette and \$15.00

### Hand Quilted

**Limit:** 1 entry per class

#### **Division 406**

#### **Class**

1. Miniature quilt not over 18"x24"
2. Table Runner
3. Baby quilt, crib size
4. Youth quilt
5. Wall Hanging, not over 60"x 85"
6. Appliqued quilt
7. Whole cloth quilt
8. Friendship quilt (Blocks made by a group) quilted by individual
9. Original Design quilt
10. Mixed media quilt or wall hanging
11. Hand quilt with hand embroidery
12. Hand quilted with machine embroidery
13. Any size quilt made from a kit
14. Prairie stitched/big stitch quilt
15. Embellishments
16. Pillow
17. Placemats, set of 2
18. Any other quilt not listed above



## Machine Quilted By Exhibitor

The piecing of the quilt and machine quilting will be judged.

**Limit:** 1 entry per class

### Division 407

#### Class

1. Miniature quilt not over 18"x24"
2. Table Runner
3. Baby quilt, crib size
4. Youth quilt
5. Wall Hanging, not over 60"x 85"
6. Appliqued quilt
7. Whole cloth quilt
8. Friendship quilt (Blocks made by a group) quilted by individual
9. Original Design quilt
10. Mixed media quilt or wall hanging
11. Hand quilt with hand embroidery
12. Hand quilted with machine embroidery
13. Any size quilt made from a kit
14. Prairie stitched/big stitch quilt
15. Embellishments
16. Pillow
17. Placemats, set of 2
18. Any other quilt not listed above

## Machine Quilted By Professional

The machine quilting in this division will *not* be judged.

**Limit:** 1 entry per class

### Division 408

#### Class

1. Miniature quilt not over 18"x24"
2. Table Runner
3. Baby quilt, crib size
4. Youth quilt
5. Wall Hanging, not over 60"x 85"
6. Appliqued quilt
7. Whole cloth quilt
8. Friendship quilt (Blocks made by a group) quilted by individual
9. Original Design quilt
10. Mixed media quilt or wall hanging
11. Hand quilt with hand embroidery
12. Hand quilted with machine embroidery
13. Any size quilt made from a kit
14. Prairie stitched/big stitch quilt
15. Embellishments
16. Pillow
17. Placemats, set of 2
18. Any other quilt not listed above

## Rag Quilts and Tie Comforters

**Limit:** 1 entry per class

**Division 409**

**Class**

1. Rag Quilt, quilted
2. Rag Quilt, not quilted
3. Tied Comforters
4. Any other item not listed above

## AFGHANS

**AWARD**

**Best of Show**

Rosette and \$25.00

**Limit:** 1 entry per class

**Division 410**

**Class**

1. Crochet
2. Knitted
3. Ripple
4. Square
5. Infants
6. Any Other Not Listed

## CRAFTS AND HOBBIES

### AWARD

#### **Best of Show**

Rosette and \$15.00

### Needlework

**Limit:** Unlimited entries. Each must be different and description field online.

#### **Division 411**

##### **Class**

1. Needlepoint articles
2. Hand Embroidered articles
3. Machine Embroidered articles
4. Counted cross stitch
5. Cross stitch articles
6. Latch Hook Articles
7. Plastic Canvas Articles
8. Crewel stitch articles
9. Stitchery articles
10. Any embroidered items not listed above

### Crochet

**Limit:** Unlimited entries. Each must be different and description field online.

#### **Division 412**

##### **Class**

1. Baby Blanket
2. Bedspread
3. Tablecloth
4. Articles with crocheted trim
5. Doily
6. Dresser Scarf
7. Pillow, stuffed
8. Potholder, set of 2
9. Any other Kitchen item - describe in description field online
10. Any other Bathroom item - describe in description field online
11. Any other Bedroom item - describe in description field online



## Crafts

**Limits:** 3 entries per class

### **Division 413**

#### **Class**

1. Christmas decorations
2. Any other Holiday decorations
3. Basketry
4. Decoupage
5. Glass Work
6. Plaster craft
7. Doll and Doll Clothes
8. Hand painted China
9. Stained Glass
10. Recycled item - must include a before photo

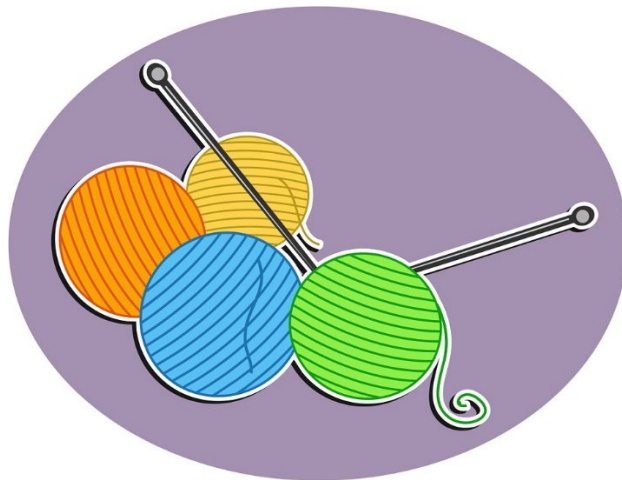
## Wearable Crafts

**Limit:** Unlimited entries. Each must be different and description field online.

### **Division 414**

#### **Class**

1. Decorated Fashion Accessories
2. Decorated Clothes



## SCRAPBOOKING AND STAMPING

### Rules:

1. Each individual page must be in a plastic sleeve to be hung for display
2. Stamps can be used for cards, invitations, gift bags, tags, or boxes.

**Limit:** 6 different entries each to be listed separately by name. Different means unlike in material, layout, and design.

### Division 415

#### Class

1. Single Page - designed by the exhibitor
2. 2-page layout - designed by the exhibitor
3. Decorated Scrapbooking Album - minimum of 6 pages
4. Art Shadow Box - made with scrapbooking materials
5. Digital Scrapbooking - using a personal computer, digital or scanned photos and computer graphics software. No Kits allowed.
6. Cards and Invitations - can use stamps
7. Gift bags, tags, or boxes - can use stamps

## BEADWORK

**Limit:** Unlimited entries. Each must be different and describe in description field online.

### Division 416

#### Class

1. Jewelry
2. Picture
3. Purse
4. Other Beadwork not listed

## LEATHER

**Limit:** Unlimited entries. Each must be different and description field online.

### Division 417

#### Class

1. Arrow Quiver/Gun Holster
2. Braided Items
3. Man's Belt, Wallet, or Bags
4. Miniature Item
5. Picture/Wall Hanging
6. Saddle
7. Woman's Belt, Wallet, or Bag
8. Other Leather work not listed

## WOODCRAFT

**Limit:** Unlimited entries. Each must be different and description field online.

### Division 418

#### Class

1. Animals, any
2. Caricature
3. Groups of Figures
4. Relief Carving
5. Walking Sticks and Canes
6. Other types of Carving

## WOODWORKING

**Limit:** Unlimited entries. Each must be different and description field online.

### Division 419

#### Class

- |   |                                     |
|---|-------------------------------------|
| 1. Birdhouse  | 5. Holiday Decorations              |
| 2. Burl Items   | 6. Mailboxes                        |
| 3. Furniture Items - restored or refinished               | 7. Toys                             |
| 4. Furniture Items original design, no copy or adaptation | 8. Wood Burning                     |
|   | 9. Other Woodcraft items not listed |

## METAL WORK

**Limit:** Unlimited entries. Each must be different and in description field online.

### Division 420

#### Class

1. Birdhouse
2. Mailboxes
3. Toys
4. Wind Chimes
5. Recycled item - must include a before photo
6. Another metalwork not listed

## PRESERVED FOODS

### Received for Judging:

**Wednesday, May 29, 2024, 10:00am - 6:00pm and Thursday, May 30, 2024, 10:00am - 6:00pm.**

**Limit:** 12 entries total - Each entry must be a different product, or the same product preserved by a different method

### Rules

1. Online entry must list the type of product (in the description field, fruit, vegetable, preserves, etc.) and the method or process used (canning, one container for drying). Low acid foods must be canned under pressure. Dried products should be wrapped in clear plastic or sealed in jars for canning, one container for drying, except for jerky (six strips) and dried fruit (six sections.)

2. Entries must be labeled with product name, the date of preparation, processing method and processing time (i.e., apricot jam, pectin method; apricot halves, water bath processed; frozen green beans, blanched one minute, to be used with three months).

### 3. NO PARAFFIN SEALS

4. All home canned foods must have been prepared within a one-year period prior to judging date.

5. Entry consists of **TWO** jars (except where otherwise specified) of each product entered. One jar will be opened for judging the other for display.

6. All entries must be canned using the same brand of jar and lid. New screw rings must be used.

### Division 421

#### Class

1. Jelly
2. Jam
3. Marmalades and Butter Conserves 4
4. Canned Fruits
5. Canned Vegetables
6. Pickled Foods
7. Tomato Based Products
8. Sauces/Syrups
9. Salsa
10. Honey
11. Dried Food - one jar or bag allowed
12. Miscellaneous - not listed above

# BAKED FOODS AND CONFECTIONS

Received for Judging:  
Monday, June 10, 2024, 10:00am – 6:00pm

## AWARDS

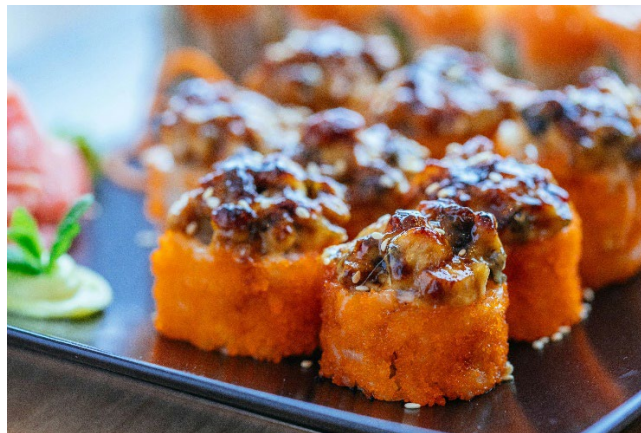
**Best of Show for Baked Foods and Confections**  
Rosette and \$25.00

**Limit:** 3 entries per Class - each must be different and described in the description field.

### **Division 422**

#### **Class**

1. Yeast Bread ½ loaf plus 1 slice
2. Yeast Biscuits or Rolls ½ dozen
3. Non -Yeast Biscuits or Rolls ½ dozen
4. Cake ½ cake plus 1 slice
5. Cookies ½ dozen
6. Brownies ½ dozen
7. Fudge ½ dozen
8. Candy ½ dozen
9. Quick Bread ½ loaf plus 1 slice
10. Cupcake ½ dozen
11. Pie or Pastries ½ pie plus 1 slice or ½ dozen



## FOR MEN ONLY

Refer to Open Rules and Definitions, Men are also eligible to enter classes in the Open sections.

**Received for Judging:  
Monday, June 10, 2023, 10:00am – 6:00pm**

### AWARD

**Best of Show**  
Rosette and \$25.00

**Limit:** 3 entries per class - each must be different and described in the description field.

### **Division 423**

#### **Class**

1. Bread ½ loaf plus 1 slice
2. Biscuits, ½ dozen
3. Rolls ½ dozen
4. Doughnuts ½ dozen
5. Muffins ½ dozen
6. Bagels ½ dozen
7. Cakes ½ cake plus 1 slice
8. Brownies ½ dozen
9. Cookies ½ dozen
10. Any other not listed, specify



## ADULT TABLE SETTING

### AWARD

#### Best of Show

Rosette and \$25.00

**Limits:** 1 Entry Per class

#### Rules:

1. MENU CARD MUST BE DISPLAYED
2. Centerpiece must be made by Exhibitor(s). It may not be pre-made or purchased, although items within it may be purchased.
3. Since Fair Management cannot be responsible for loss or breakage, members are encouraged not to include valuable items in the exhibit.
4. No SHARP KNIVES may be displayed.
5. Each individual or group will be allowed 30 minutes to set up their area.
6. Each Individual or Group may not start till everyone, and all materials and supplies are there.

### Division 424

#### Class

1. **New** -Movie Theme
2. Holiday
3. Fair Theme





## **SENIOR DIVISION (HOME CARE/CONVALESCENT CARE)**

Open to anyone who is **65 years old or older** may enter Senior Division or Open Adult Division. Exhibitors may not enter the Adult Division and Senior Division.

**Online Entry Registration Deadline:** Due on or Before Friday, May 26, 2023, 11:30pm Online Only.

### **AWARD**

Best of Show  
Rosette and \$15.00

### **Knitted Wearable Apparel**

**Limit:** Unlimited entries. Each must be different and description field online.

#### **Division 450**

##### **Class**

- |                                  |  |
|----------------------------------|--|
| 1. Vest, Shawl, Cape or Poncho   | 7. Purses or bag                           |
| 2. Slippers or socks             | 8. Gloves or Mittens                       |
| 3. Sweater, Pullover or Cardigan | 9. Jewelry                                 |
| 4. Toy, Doll or Doll Clothing    | 10. Infant or children's clothes           |
| 5. Cap or Hat                    | 11. Any other Accessories not listed above |
| 6. Scarf                         |  |

### **Crocheted Wearable Apparel**

**Limit:** Unlimited entries. Each must be different and description field online.

#### **Division 451**

##### **Class**

- |                                  |  |
|----------------------------------|--|
| 1. Vest, Shawl, Cape, or Poncho  | 7. Purses or bag                           |
| 2. Slippers or socks             | 8. Gloves or Mittens                       |
| 3. Sweater, Pullover or Cardigan | 9. Jewelry                                 |
| 4. Toy, Doll, or Doll Clothing   | 10. Infant or children's clothes           |
| 5. Cap or Hat                    | 11. Any other Accessories not listed above |
| 6. Scarf                         |  |

## **Home Furnished**

**Limit:** Unlimited entries. Each must be different and description field online.

### **Division 452**

#### **Class**

1. Pillows
2. Tablecloth
3. Pillow Slips
4. Place Mats, set of 4
5. Potholder, set of 2
6. Dish Towels, set of 2
7. Apron
8. Any other item not listed, Kitchen
9. Any other item not listed, Bathroom
10. Any other item not listed, Bedroom

## **Quilts, Comforters and Wall Hangings**

Open to quilters of Kings, Tulare, and Fresno Counties. Quilts must have been completed in the past two (2) years and may not have been previously entered in The King's Fair.

**Please specify size and pattern on entry form Quilts made by groups not eligible.**

## **Hand Quilted**

**Limit:** 1 entry per class

### **Division 453**

#### **Class**

1. Miniature quilt not over 18"x24"
2. Table Runner
3. Baby quilt, crib size
4. Youth quilt
5. Wall Hanging, not over 60"x 85"
6. Appliqued quilt
7. Whole cloth quilt
8. Friendship quilt (Blocks made by a group) quilted by individual
9. Original Design quilt
10. Hand quilted with machine embroidery
11. Any size quilt made from a kit
12. Prairie stitched/big stitch quilt
13. Embellishments
14. Pillow
15. Placemats, set of 2
16. Any other quilt not listed above

## Rag Quilts and Tied Comforters

**Limit:** 1 entry per class

### **Division 454**

#### **Class**

1. Rag Quilt, quilted
2. Rag Quilt, not quilted
3. Tied Comforters
4. Any other item not listed above

## Afghans

**Limit:** 1 entry per class

### **Division 455**

#### **Class**

1. Crochet
2. Knitted
3. Ripple
4. Square
5. Infants
6. Any Other Not Listed

## Crafts

**Limit:** 3 entries per class

### **Division 456**

#### **Class**

1. Christmas decorations
2. Any other Holiday decorations
3. Basketry
4. Decoupage
5. Plaster craft
6. Mosaic
7. Doll Clothes
8. Hand painted China
9. Recycled item - must include a before photo

## Wearable Crafts

**Limit:** Unlimited entries. Each must be different and description field online.

### **Division 457**

#### **Class**

1. Decorated Fashion Accessories
2. Decorated Clothes

## **Scrapbooking and Stamping**

**Limit:** 6 different entries each to be listed separately by name. Different means unlike in material, layout, and design.

### **Rules**

1. Each individual page must be in a plastic sleeve to be hung for display
2. Stamps can be used for cards, invitations, gift bags, tags, or boxes.

### **Division 458**

#### **Class**

1. Single Page - designed by the exhibitor
2. 2-page layout - designed by the exhibitor
3. Decorated Scrapbooking Album - minimum of 6 pages
4. Art Shadow Box - made with scrapbooking materials
5. Digital Scrapbooking - using a personal computer, digital or scanned photos and computer graphics software. No Kits allowed.
6. Cards and Invitations - can use stamps
7. Gift bags, tags, or boxes - can use stamps

## **Needlework**

**Limit:** Unlimited entries. Each must be different and description field online.

### **Division 459**

#### **Class**

- |                                 |  |
|---------------------------------|--|
| 1. Needlepoint articles         | 6. Latch Hook Articles                     |
| 2. Hand Embroidered articles    | 7. Plastic Canvas Articles                 |
| 3. Machine Embroidered articles | 8. Crewel stitch articles                  |
| 4. Counted cross stitch         | 9. Stitchery articles                      |
| 5. Cross stitch articles        | 10. Any embroidered items not listed above |

## Crochet

**Limit:** Unlimited entries. Each must be different and description field online.

### **Division 460**

#### **Class**

1. Baby Blanket
2. Bedspread
3. Tablecloth
4. Articles with crocheted trim
5. Doily
6. Dresser Scarf
7. Pillow, stuffed
8. Potholder, set of 2
9. Any other Kitchen item - describe
10. Any other Bathroom item - describe
11. Any other Bedroom item - describe

## Woodcarving

**Limit:** Unlimited entries. Each must be different and description field online.

### **Division 461**

#### **Class**

1. Animals, any
2. Caricature
3. Groups of Figures
4. Relief Carving
5. Walking Sticks and Canes
6. Other types of Carving

