



2026

ADULT COMPETITIONS

BRING ENTRIES TO THE GRAPE BUILDING

Online Entry Registration Deadline: Due on or Before Monday, May 25, 2026, by midnight - online only.

ALL EXHIBITS (*except food and flowers*) – GRAPE BUILDING
Received for Judging: **Friday, June 12th, 2026; 10:00am - 6:00pm**

Food and Flower entries must be Received for Judging **Friday, June 19th, 2026, 10:00am – 6:00pm.**

ARTWORK RELEASED: Monday, June 29th, 2026 – 10:00am - 6:00pm (All exhibits must be picked up on Monday in the Grape Building). Items not picked up will be properly disposed of or donated to a charitable organization.

DEPARTMENT RULES FOR ADULTS:

LIMITS: See each Division on entry limits.

1. Exhibitor must be a resident of Kings.
2. All entries must have been completed within the last two years and NOT previously exhibited at The Kings Fair. Entries are limited to residents of Fresno, Kings, and Tulare Counties unless otherwise specified
3. All articles must remain on display until the day after the Fair.
4. All exhibits must have been made by the exhibitor and may *not* have been previously entered in the Kings Fair.
5. Name or initial, month and year must be inscribed on the underneath side before firing.
6. Created from MOLDS. Any finished ceramic piece formed from a Mold and finished by exhibitor.
7. Entries are at the exhibitor's own risk. The utmost care will be given to all entries; however, The Kings Fair accepts no responsibility for loss, stolen or damage of any kind to any entry. Your completed online entry is the acceptance of this rule. There is a police presence on the grounds during the Kings Fair.
8. All works (fine art and photography) must be titled for identification purposes. Please have your name and the title on the back of your entry in case a tag falls off exhibit item.
9. The Kings Fair reserves the right to exclude entry, which is not in the best interest of the fair and reserves the right to disqualify any exhibitor(s) who conducts themselves in an inappropriate manner, without discussion or justification. No payment of any awards will be made to individuals who have been disqualified.
10. The American system of judging will be used.

AWARDS

Best of Show

Rosette and \$25.00

1st, 2nd, 3rd Place..... Ribbons

ADULT FINE ARTS DEPARTMENT

FINE ART RULES:

1. All entries must be framed or matted; exceptions are made for canvas & sculpture works.
2. Framed with wires and hooks. Exhibits must have proper hardware for hanging or exhibits cannot be judged. **No Sawtooth allowed for hanging.**
3. **Sculpture:** Large and delicate exhibit items may be handled and installed by the exhibitor during check-in on the floor area with the supervision of the Superintendent or Assistant Superintendent during receiving days.

Limits: 8 entries total, 2 items per class each must be different.

DIVISION 100 - OIL PAINTINGS

DIVISION 101 - WATERCOLOR

DIVISION 102 - ACRYLIC

DIVISION 103 - DRAWING: Pastel, Pen, Ink, Pencil, Colored Pencils, or Charcoal

DIVISION 104 - Mixed Media:

Mixture of Mediums or Collage

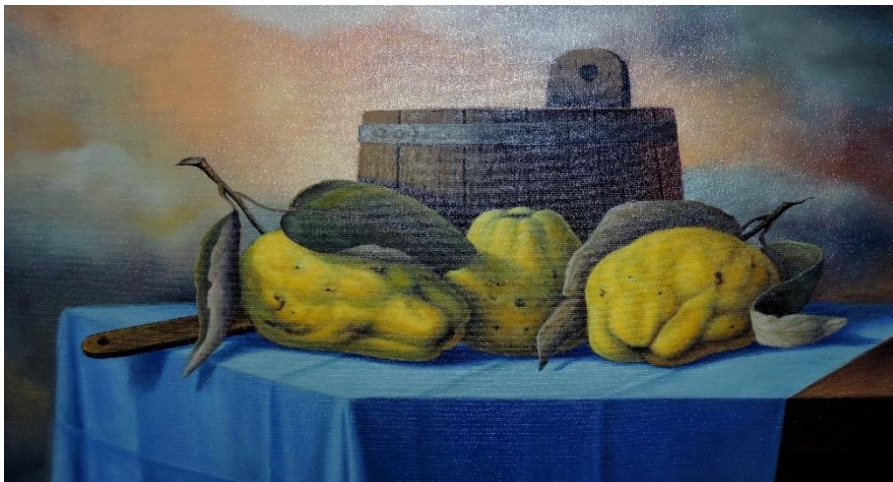
DIVISION 105 - CARTOONING:

DIVISION 106 - DIGITAL ART: Created on an Electronic Device

Class:

1. Abstract
2. Animals (birds, dogs, etc.)
3. Buildings
4. Fair Theme

5. Floral
6. Landscape or Seascape
7. Miscellaneous
8. Portrait
9. Transportation



DIVISION 107 - SCULPTURE: Clay, Ceramics and Porcelain Art

Class:

1. Wheelwork
2. Hand Built - Original design
3. Underglaze
4. Glaze
5. Stains
6. Metal
7. Wood



DIVISION 108 - CRAFTS

Class:

- | | |
|--|--|
| <ol style="list-style-type: none">1. Duct Tape Art2. Mosaic | <ol style="list-style-type: none">3. Papier-Mache4. Decorative Painting5. Origami6. Other Unlisted Work |
|--|--|

ADULT PHOTOGRAPHY DEPARTMENT

RULES:

1. Pictures must have been taken within one year of the opening date of The Kings Fair.
2. **MATTED:** All entries must be no smaller than 5" x 7" and no larger than 14" x 18" photograph with a mat that goes at least 2" around the picture. No frames, hooks, wires, string, or tape. REQUIRED: Attach a 7/8" or larger sticky Velcro tape to the back of each corner of your mat. Use the prickly side of the Velcro and not the fuzzy side.
3. **FRAMED/CANVAS:** Entries can be of any size or length, including vertical or horizontal panoramic images. Please keep in mind that space is limited (nothing too large). Must have proper hardware for hanging (wires and hooks) or exhibit cannot be judged. All photographs must be framed unless your work is on a box frame that does not require a frame. This applies to adults and juniors.

Limits: 8 entries total, 2 items per class each must be different.

DIVISION 120 - MATTED COLOR PHOTOGRAPHY

DIVISION 121 - MATTED BLACK & WHITE PHOTOGRAPHY

DIVISION 122 - FRAMED COLOR PHOTOGRAPHY

DIVISION 123 – FRAMED BLACK & WHITE PHOTOGRAPHY

Class:

1. Action (anything in movement)
2. Agriculture (other than animals)
3. Animals (Farm, Wildlife, Zoo, and household pets)
4. Architectural
5. Fair Theme
6. Floral or Plants
7. Food
8. Landscape
9. Miscellaneous

10. State or National Parks
11. People
12. Portrait
13. Selfies
14. Sports
15. Sunrises or Sunsets
16. Travel
17. Transportation
18. Toys
19. Water Scenes (includes rivers, lakes, streams, or oceans as the predominant theme).



ADULT HORTICULTURE & FLORICULTURE DEPARTMENT

Rules:

1. All local and state rules apply pertaining to this department.
2. There will be a place provided for you to arrange your flowers before entering them.
3. If less than five (5) entries in a class, the Fair reserves the right to combine classes.
4. Risers, ground cover (humus, rock, chips) will NOT be provided by the fair.
5. Booth space will be allocated by the Building Supervisors after online entry deadline.
6. According to Section 13119 of the Health and Safety Code of the State, it is unlawful to decorate booths with any flammable material unless treated by a flame-retardant chemical as defined in Section 13115. There are many decoration materials on the market today that comply with the letter of the law.
7. Scorecard strictly enforced by judge. **Note:** Exhibits in the Floriculture Department must have been grown by the Exhibitor within the county of Kings, district or community represented by the Exhibitor, except classes for arrangements. Florists and nurseries may exhibit plants, plant material and flowers which they currently sell but do not necessarily grow. Only persons licensed to sell nursery stock may sell plant materials which have been incorporated in displays. **EXHIBITS MUST BE ADEQUATELY AND CORRECTLY LABELED AND THE RESPONSIBILITY OF THE EXHIBITOR, BEFORE JUDGING.** The judge will use the American system of 1st, 2nd, 3rd, 4th or 5th place according to merit; and if without merit, the judge shall make no award under any circumstances. This rule applies whether there are one or more entries in the class.

SCORECARD:

USE OF FLORICULTURE/ HORTICULTURE:
25% Must use floriculture (plants, flowers, fruits/vegetables, or agricultural commodities in the exhibit.

EDUCATIONAL VALUE - 25% Informative value through the use of signage, labeling, legends and/or any other manner in which information is conveyed to the public.

INGENUITY – 20% Cleverness and skill in design and/or contrivances used to illustrate or represent (such as characters, miniatures, photographs, models, etc.)

ATTRACTIVENESS - 10% Effective use of composition, animation, color and/or other exhibit aids to enhance appearance create interest and invite closer inspection.

LIGHTING - 10% Added dramatic effects, color and/or techniques enhancing the exhibit.

EXHIBIT THEME - 10% Thought or idea expressed by design or feature of the exhibit, i.e.: fair theme, city characteristics, etc.

DIVISION 130 - HERBS

Plate Display (At least 4-6" Cuttings)

Class

1. Cut herb, sage
 2. Cut herb, oregano
 3. Cut herb, sweet basil
 4. Cut herb, rosemary
 5. Cut herb, dill
 6. Cut herb, parsley
 7. Cut herb, any other variety
- Vegetables

Entries Must Be Home Grown Vegetables

Plate Display: Six (6) - Small, Three (3) - Large

DIVISION 131- VEGETABLES

Class

1. Beans, Any variety
2. Beets
3. Carrots
4. Cucumbers
5. Egg Plant
6. Garlic
7. Onions (purple)
8. Onions (white)
9. Onions (yellow)
10. Onions (green)
11. Peppers (Chile - any variety)
12. (12) Peppers (bell – any Variety)
13. Potatoes
14. Pumpkin
15. Radishes
16. Squash
17. Tomato
18. Tomato, Cherry
19. Any Other

The display must consist of no more than **10** and no less than **5** home grown fruits, nuts, vegetables, and herbs. To be displayed decoratively in an open basket where all products can easily be viewed. A 5x7 card naming all varieties clearly printed or typed must be included.



DIVISION 132- FRESH FRUIT

Class

- | | |
|-----------------------------|------------------|
| 1. Apples | 7. Nectarines |
| 2. Apricots | 8. Peaches |
| 3. Blueberries | 9. Plums |
| 4. Figs | 10. Strawberries |
| 5. Grapes - 2 small bunches | 11. Watermelon |
| 6. Melon, Cantaloupe | 12. Any other |

Entries Must Be Home Grown & Home Dried

Plate Display: Six (6) to Eight (8) – Small, Four (4) to Six (6) - Large

DIVISION 133 - DRIED FRUIT

Class

1. Peaches
2. Apricots
3. Any Other Not Listed

Entries Must Be Home Grown & Home Dried

Plate Display: Six (6) to Eight (8) – Small, Four (4) to Six (6) - Large

DIVISION 134 - POTTED PLANTS

Class

- | | |
|---|---|
| 1. Begonia, Any | 13. Potted Vines, Ivy |
| 2. Cacti, Any | 14. Schefflera |
| 3. Coleus, Single Plant | 15. Spider Plant, Green Foliage |
| 4. Coleus, 3 Plants, 1 Variety, 1 Container | 16. Spider Plant, Variegated Foliage |
| 5. Creeping Charlie or Swedish Ivy | 17. Succulent, Single |
| 6. Fern, Any | 18. Succulent, 3 or more |
| 7. Geranium, Any | 19. Wandering Jew |
| 8. Impatiens, Any | 20. Any Other Potted Plant, Upright, Not Listed |
| 9. Nephthys's or Arrowhead Vine | 21. Any Other Potted Plant, Hanging, Not Listed |
| 10. Patio Delight (5 plants unit) | |
| 11. Sejo Palm | |
| 12. Any Palm | |

(All Natural Dried Materials) Accessories Permitted
Scorecard

Design 40% Color Harmony 20%
Distinction..... 20% Expression..... 20%

DIVISION 135 - DRY MATERIAL ARRANGEMENTS

Class

1. The High Road (Horizontal)
2. Petite Beauty (Under 8")
3. Fair Theme

DIVISION 136 - SILK FLOWER ARRANGEMENTS

Class

1. Special Day (holiday, anniversary, birthday, etc.)
2. Just One Color
3. Fair Theme

DIVISION 137 - FRESH, DRY OR COMBINATION

(Fresh material should NOT be treated)

Class

1. The Very Best (All Fresh)
2. Continuity (3 Containers)
3. Fair Theme

DIVISION 138 - SHRUBS, VINES AND TUBEROUS BULBS (1 Stem)

Class

- | | |
|--------------------------------------|---------------------------------|
| 1. Agapanthus | 8. Hydrangea, Any Variety |
| 2. Canna, Any | 9. Japanese Iris, Any |
| 3. Sahibs, Jumbo | 10. Rose of Sharon, Any 1 |
| 4. Sahibs, Standard | 11. Bottle Brush |
| 5. Gerbera | 12. Day Lily, Any |
| 6. Gardenia | 13. Any Other Flower Not Listed |
| 7. Flowering Shrub/Tree (Not Listed) | |

DIVISION 139 - ANNUALS & PERENNIALS (3 Stems)

Class

1. Carnations
2. Celosia
3. Coreopsis
4. Cosmos
5. Gloriosa Daisy
6. Marguerite
7. Marigold, Giant
8. Petunia, Any
9. Salvia
10. Shasta Daisy, Any
11. Statice, Any Color
12. Vinca, Any Color
13. Zinnias, Any
14. Yarrow
15. Any Other Cut Flower (Not Listed)

DIVISION 140- NOVICE CUT ROSES *Limited to exhibitors who have never won a blue ribbon in Cut Roses*

Class

1. Hybrid Tea, 1 Bloom, Any Color
2. Any Other Rose, 1 bloom or spray, Any Color

DIVISION 141 - CUT ROSES

Class

1. Floribunda, Any Color, 1 spray
2. Hybrid Tea, Any Color, 1 bloom
3. Grandiflora, Any Color, 1 bloom
4. Roses, Any, 3 Different Colors
5. Miniature Cycle of Bloom, Any Color
6. Miniature, Any Color, 1 bloom
7. Climber, Any Color, 1 bloom or 1 spray
8. Single Petal Variety, Any Rose with 5-12 petals, Any Color, 1 bloom or 1 spray
9. Most Fragrant, Any Type of Rose, Any Color (60 pts of scoring will be for fragrance).

DIVISION 142 - FRESH ROSE ARRANGEMENTS

Class

1. Red, White & Blue
2. Fair Theme
3. Coming Up Roses (All Roses)

DECORATIVE CONTAINERS

DIVISION 143 - MAILBOX, BIRDHOUSE

Class

1. Wood
2. Any other

DIVISION 144 - Recycled Material

Class

1. Stepping stones
2. Figurines

DIVISION 145 - TERRA COTTA, WOOD, OR OTHER MATERIAL

Class

1. Terra Cotta, Wood
2. Clay
3. Any other



ADULT CLOTHING AND TEXTILES DEPARTMENT

Limits: Unlimited entries. Each must be different and description field online.

Division 150 – Sewing, Wearable Apparel

Class

1. Sleepwear, Any
2. Children's Clothes
3. Women's Clothes
4. Men's Clothes
5. Coordinated Outfit, any type
6. Formal Attire, any
7. Costume
8. Handbags
9. Hats, Scarves and Accessories
10. Dolls or Doll clothes
11. Any item not listed above

Division 151 – Knitted, Wearable Apparel

Division 152 - Crocheted- Wearable Apparel

Class

1. Vest
2. Shawl, Cape or Poncho
3. Sweater, Pullover or Cardigan
4. Toy, Doll, or Doll Clothing
5. Cap or Hat
6. Tank Top Scarf
7. Purses or bag
8. Socks or Slippers
9. Gloves, Mittens or Scarf
10. Infant or children's clothes
11. Any other Accessories not listed above

Division 153 - Home Furnishing

Class

1. Pillows
2. Tablecloth
3. Pillow Slips
4. Place Mats, set of 4
5. Potholders, set of 2
6. Dish Towels, set of 2
7. Apron
8. Any other item not listed, Kitchen
9. Any other item not listed, Bathroom
10. Any other item not listed, Bedroom



Open to quilters of Kings, Tulare, and Fresno Counties. Quilts must have been completed in the past two (2) years and may not have been previously entered in The King's Fair. Please specify size and pattern in the description field online.

Quilts made by groups not eligible.

Limit: 1 entry per class

Division 154 – Machine Quilted by Exhibitor

Division 155 – Machine Quilted by Professional

Class

- | | |
|---|--|
| 1. Miniature quilt not over 18"x24" | |
| 2. Table Runner | 10. Mixed media quilt or wall hanging |
| 3. Baby quilt, crib size | 11. Hand quilt with hand embroidery |
| 4. Youth quilt | 12. Hand quilted with machine embroidery |
| 5. Wall Hanging, not over 60"x 85" | 13. Any size quilt made from a kit |
| 6. Appliqued quilt | 14. Prairie stitched/big stitch quilt |
| 7. Whole cloth quilt | 15. Embellishments |
| 8. Friendship quilt (Blocks made by a group)
quilted by individual | 16. Pillow |
| 9. Original Design quilt | 17. Placemats, set of 2 |
| | 18. Any other quilt not listed above |

Limit: 1 entry per class

Division 156 – Rag Quilts and Tie Comforters

Class

- | | |
|---------------------------|------------------------------------|
| 1. Rag Quilt, quilted | 3. Tied Comforters |
| 2. Rag Quilt, not quilted | 4. Any other item not listed above |

Limit: 1 entry per class

Division 157 - Afghans

Class

- | | |
|------------|-------------------------|
| 1. Crochet | 4. Square |
| 2. Knitted | 5. Infants |
| 3. Ripple | 6. Any Other Not Listed |

Limit: Unlimited entries. Each must be different and description field online.

Division 158- Needlework

Class

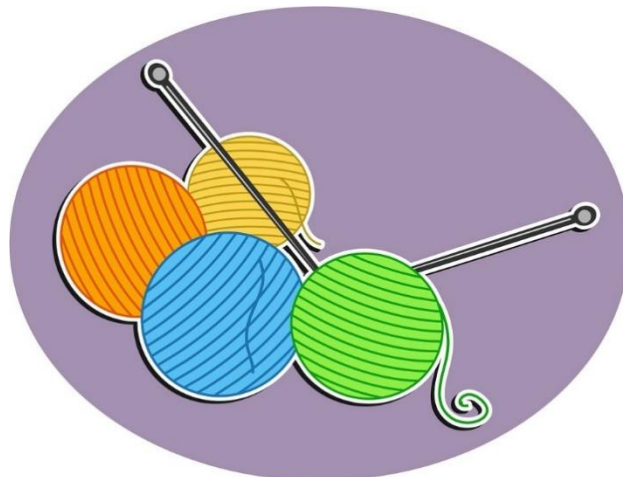
1. Needlepoint articles
2. Hand Embroidered articles
3. Machine Embroidered articles
4. Counted cross stitch
5. Cross stitch articles
6. Latch Hook Articles
7. Plastic Canvas Articles
8. Crewel stitch articles
9. Stitchery articles
10. Any embroidered items not listed above

Limit: Unlimited entries. Each must be different and description field online.

Division 159 - Crochet

Class

1. Baby Blanket
2. Bedspread
3. Tablecloth
4. Articles with crocheted trim
5. Doily
6. Dresser Scarf
7. Pillow, stuffed
8. Potholder, set of 2
9. Any other Kitchen item - describe in description field online



ADULT CRAFTS AND HOBBIES DEPARTMENT

Limits: 3 entries per class

Division 160 - Crafts

Class

1. Christmas decorations
2. Any other Holiday decorations
3. Basketry
4. Decoupage
5. Glass Work
6. Plaster craft
7. Doll and Doll Clothes
8. Hand painted China
9. Stained Glass
10. Recycled item - must include a before photo

Rules:

1. Each individual page must be in a plastic sleeve to be hung for display
2. Stamps can be used for cards, invitations, gift bags, tags, or boxes.

Limit: 6 different entries each to be listed separately by name. Different means unlike in material, layout, and design.

Division 161 – Scrapbooking and Stamping

Class

1. Single Page - designed by the exhibitor
2. 2-page layout - designed by the exhibitor
3. Decorated Scrapbooking Album - minimum of 6 pages
4. Art Shadow Box - made with scrapbooking materials
5. Digital Scrapbooking - using a personal computer, digital or scanned photos and computer graphics software. No Kits allowed.
6. Cards and Invitations - can use stamps
7. Gift bags, tags, or boxes - can use stamps

Division 162 - Beadwork

Class

1. Jewelry
2. Picture
3. Purse
4. Other Beadwork not listed

Division 163 - Leather

Class

1. Arrow Quiver/Gun Holster
2. Braided Items
3. Man's Belt, Wallet, or Bags
4. Miniature Item
5. Picture/Wall Hanging
6. Saddle
7. Woman's Belt, Wallet, or Bag
8. Other Leather work not listed

Division 164 - Woodcraft

Class

1. Animals, any
2. Caricature
3. Groups of Figures
4. Relief Carving
5. Walking Sticks and Canes
6. Other types of Carving



Division 165 - Woodworking

Class

1. Birdhouse
2. Burl Items
3. Furniture Items - restored or refinished
4. Furniture Items original design, no copy or adaptation
5. Holiday Decorations
6. Mailboxes
7. Toys
8. Wood Burning
9. Other Woodcraft items not listed

Limit: Unlimited entries. Each must be different and in description field online.

Division 166 – Metal Work

Class

1. Birdhouse
2. Mailboxes
3. Toys
4. Wind Chimes
5. Recycled item - must include a before photo
6. Another metalwork not listed

Limits: 1 Entry Per class

Rules:

1. MENU CARD MUST BE DISPLAYED
2. Centerpiece must be made by Exhibitor(s). It may not be pre-made or purchased, although items within it may be purchased.
3. Since Fair Management cannot be responsible for loss or breakage, members are encouraged not to include valuable items in the exhibit.
4. No SHARP KNIVES may be displayed.
5. Each individual or group will be allowed 30 minutes to set up their area.
6. Each Individual or Group may not start till everyone, and all materials and supplies are there.

Division 167 – Table Setting

Class

1. Disney Movie Theme
2. Holiday
3. Fair Theme



ADULT FOOD DEPARTMENT

Limit: 12 entries total - Each entry must be a different product, or the same product preserved by a different method

Rules

1. Online entry must list the type of product (in the description field, fruit, vegetable, preserves, etc.) and the method or process used (canning, one container for drying). Low acid foods must be canned under pressure. Dried products should be wrapped in clear plastic or sealed in jars for canning, one container for drying, except for jerky (six strips) and dried fruit (six sections.)

2. Entries must be labeled with product name, the date of preparation, processing method and processing time (i.e., apricot jam, pectin method; apricot halves, water bath processed; frozen green beans, blanched one minute, to be used with three months).

3. NO PARAFFIN SEALS

4. All home canned foods must have been prepared within a one-year period prior to judging date.

5. Entry consists of **ONE** jar (except where otherwise specified) of each product entered.

6. All entries must be canned using the same brand of jar and lid. New screw rings must be used.

Division 168 – Preserved Food

Class

- | | |
|------------------------------------|--------------------------------------|
| 1. Jelly | 7. Tomato Based Products |
| 2. Jam | 8. Sauces/Syrups |
| 3. Marmalades and Butter Conserves | 9. Salsa |
| 4. Canned Fruits | 10. Honey |
| 5. Canned Vegetables | 11. Dried Food - Jar or bag allowed |
| 6. Pickled Foods | 12. Miscellaneous - not listed above |

Limit: 3 entries per Class - each must be different and described in the description field.

Division 169 – Baked Foods and Confections

Class

1. Yeast Bread ½ loaf plus 1 slice
2. Yeast Biscuits or Rolls ½ dozen
3. Non -Yeast Biscuits or Rolls ½ dozen
4. Cake ½ cake plus 1 slice
5. Cookies ½ dozen
6. Brownies ½ dozen
7. Fudge ½ dozen
8. Candy ½ dozen
9. Quick Bread ½ loaf plus 1 slice
10. Cupcake ½ dozen
11. Pie or Pastries ½ pie plus 1 slice or ½ dozen



Registration Deadline for Contest is due: Monday, May 25, 2026, by midnight.

All Entries must be Received for Judging Friday, June 12th, 2026, 10:00pm - 6:00pm

All Exhibits Released: Monday, June 29th, 2026, 10:00am - 6:00pm. All unclaimed exhibits and awards will be recycled or donated to a charitable organization after Monday, June 29th.

CONTESTS

ADULT CONTESTS - All ages 19 and above compete in the same divisions.

AWARD: Rosette and \$50.00

Limit: 1 entry per class

Rules:

1. Recycled aprons will need to include a **before and after photo**. (Bring with entry)
2. This entry must be different from clothing and Crafts Divisions.

Division 180 – Adult Apron Contest

Class

1. Decorated apron
2. Sewn apron
3. Recycled apron

AWARD: Rosette and \$50.00

Rules:

1. Limited to one entry per exhibitor per class
2. Fabric must be 100% cotton. Describe content in the description field.

Limit: One entry per class

Division 181 - 100% Cotton Contest Adult Sewing Contest

Class

1. Single item
2. Coordinated item