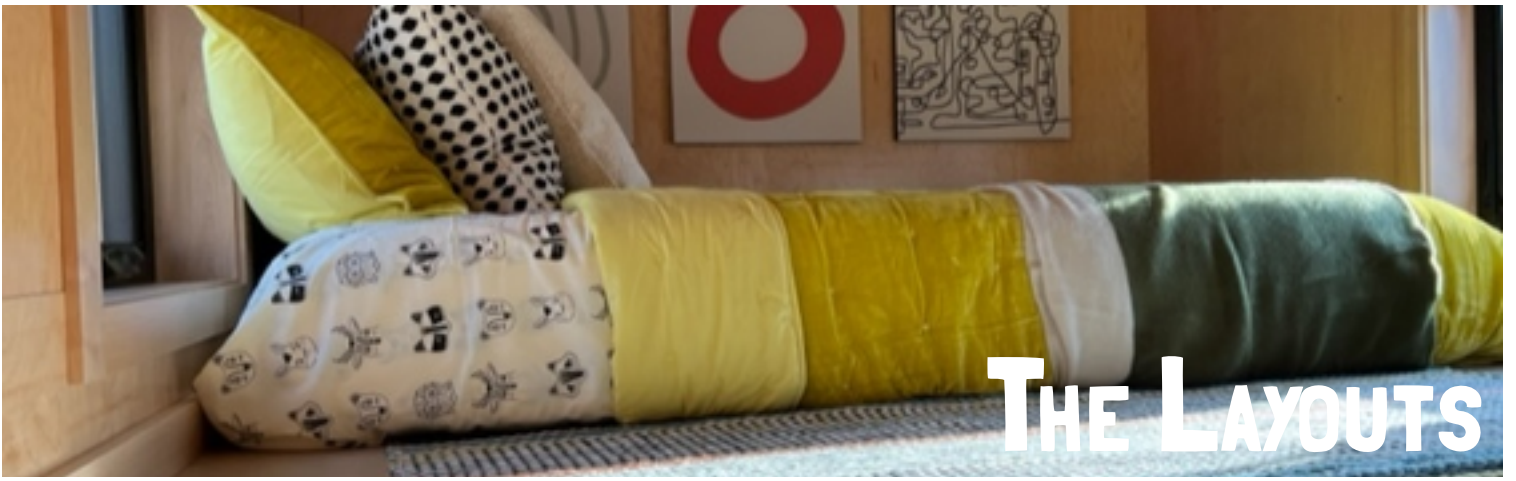




# ADVENTURE STARTS HERE



**GROUND FLOOR:**

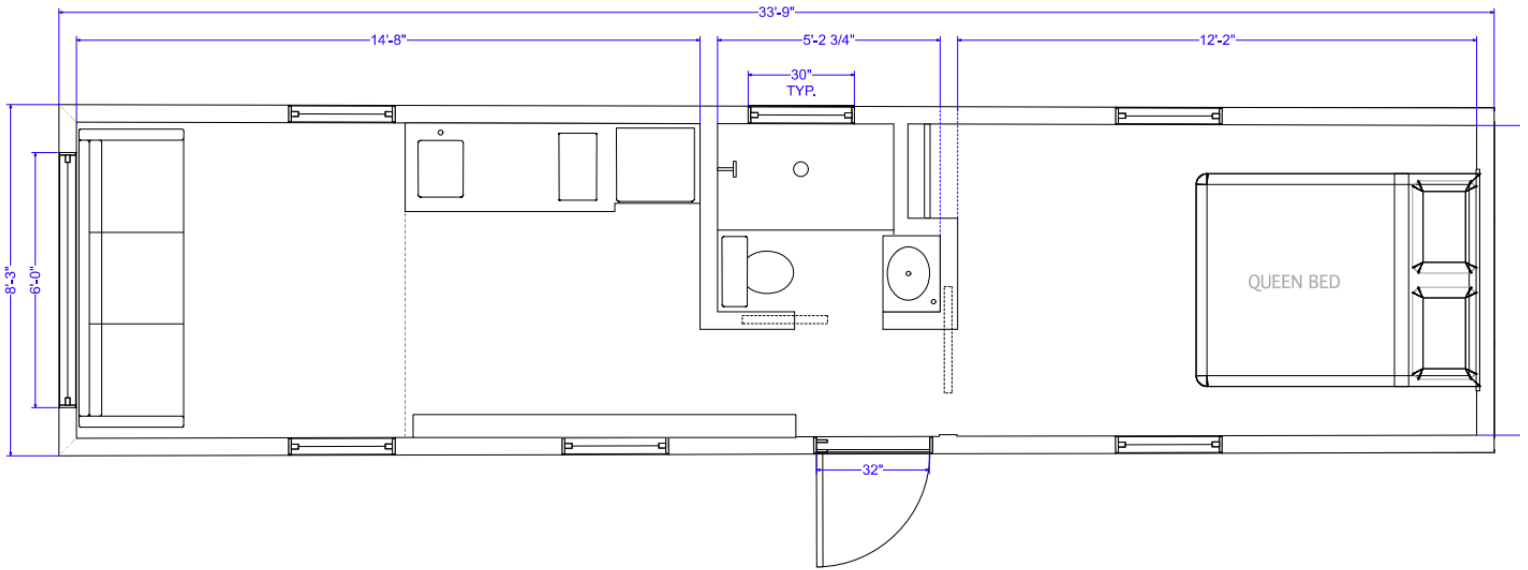


**HI-LO (1ST FLOOR BED AND LOFT):**



**GOOSENECK:**





LIVING: 57FT<sup>2</sup>

KITCHEN: 52FT<sup>2</sup>

BATHROOM: 23FT<sup>2</sup>

BEDROOM: 90FT<sup>2</sup>

TOTAL: 220FT<sup>2</sup>

NOTE: DIMENSIONS ARE SHOWN FOR A 32 FOOT TRAILER

# GROUND FLOOR ADD-ONS:



STANDARD



MODERN



FARMHOUSE

## KITCHEN:

- UPPER CABINETS
- WHITE MEGANITE COUNTERTOPS
- 3 BURNER COOKTOP/ OVEN
- MICROWAVE
- CEILING FAN

[PREMIUM SIDING LINK](#)

## BEDROOM:

- OVER BED CABINETS
- WALL CLOSET
- CEILING FAN

## LIVING ROOM:

- SHELVING OVER THE WHEEL WELL
- TV SWIVEL MOUNT
- UPPER OUTLET FOR PROJECTOR

## WINDOWS:

- SINGLE- HUNG WITH BLACK FINISH
- CASEMENT WITH BLACK FINISH

[PREMIUM WINDOWS LINK](#)

## EXTERIOR:

- PAINTED BOARD AND BATTEN {SHORT WALLS}
- PAINTED LAP SIDING OF LONG SIDE WALLS

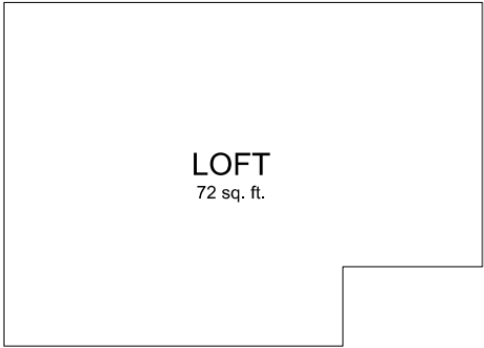
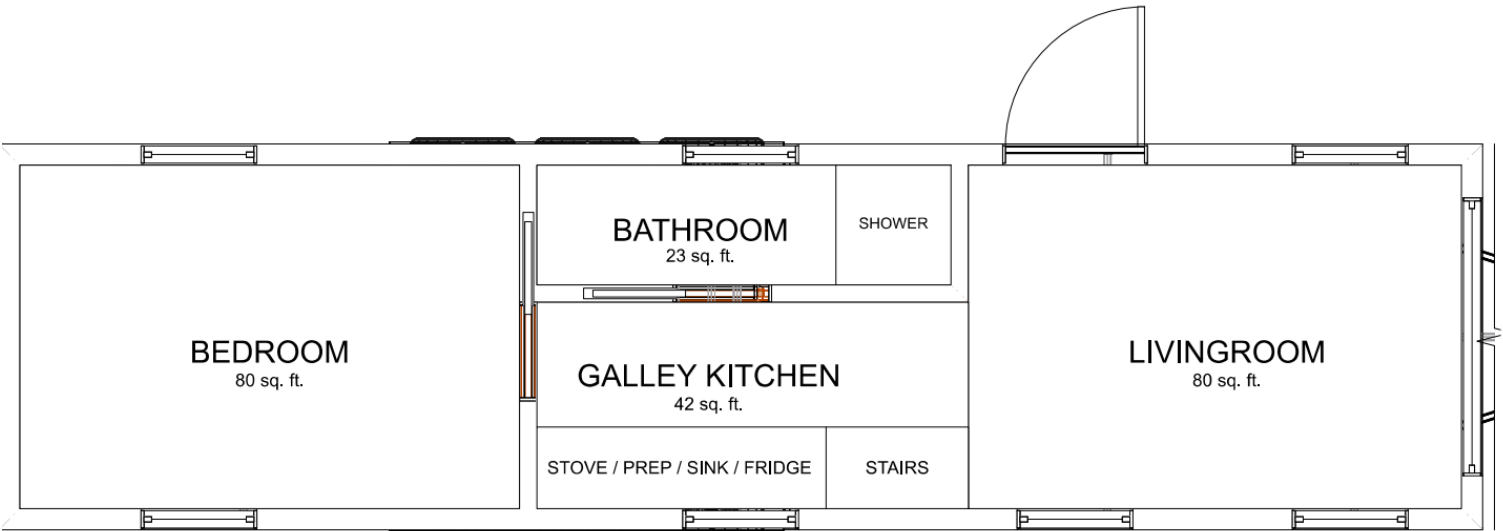
# GROUND FLOOR PICTURES:





# THE HI-LO

## 1ST FLOOR BEDROOM WITH A LOFT



**Approx 295 sq ft.**

H/LO-32 Ground Plan  
1" = 1'-0"

**NOTE: DIMENSIONS ARE SHOWN FOR A 32 FOOT TRAILER**

# HI-LO ADD-ONS:



STANDARD



MODERN



FARMHOUSE

## KITCHEN:

- UPPER CABINETS
- WHITE MEGANITE COUNTERTOPS
- MICROWAVE
- CEILING FAN

## LIVING ROOM:

- WASHER DRYER COMBO UNIT {CONNECTION INCLUDED}. VENTED OR VENTLESS!
- TV SWIVEL MOUNT
- UPPER OUTLET FOR PROJECTOR

## EXTERIOR:

- PAINTED BOARD AND BATTEN {SHORT WALLS}
- PAINTED LAP SIDING OF LONG SIDE WALLS

## BEDROOM:

- OVER BED CABINETS
- CEILING FAN

## WINDOWS:

- SINGLE-HUNG WITH BLACK FINISH
- CASEMENT WITH BLACK FINISH

# HI-LO PICTURES:



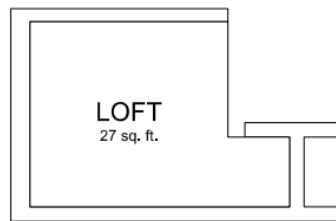




# COMING SOON! THE GOOSENECK



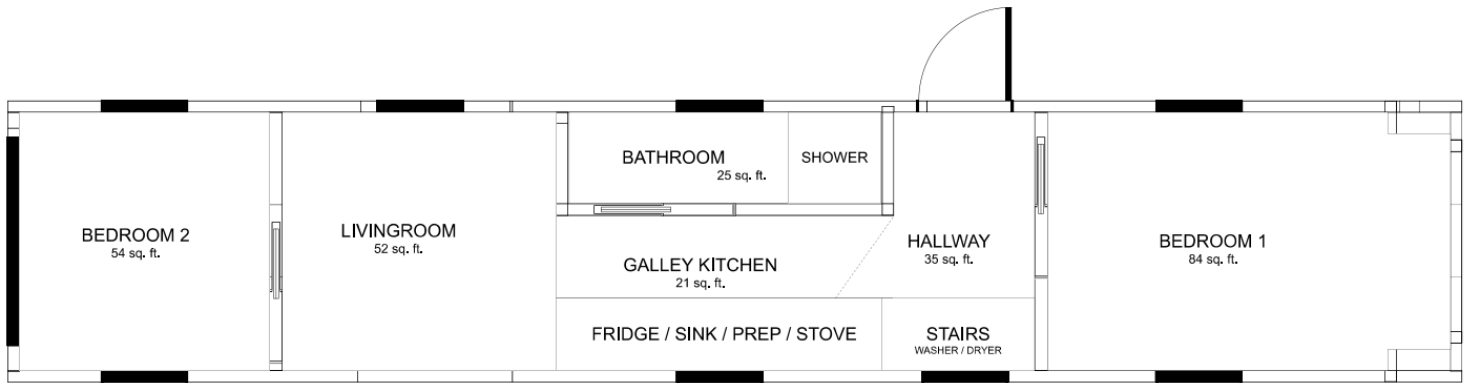
Approx 270 sq ft.



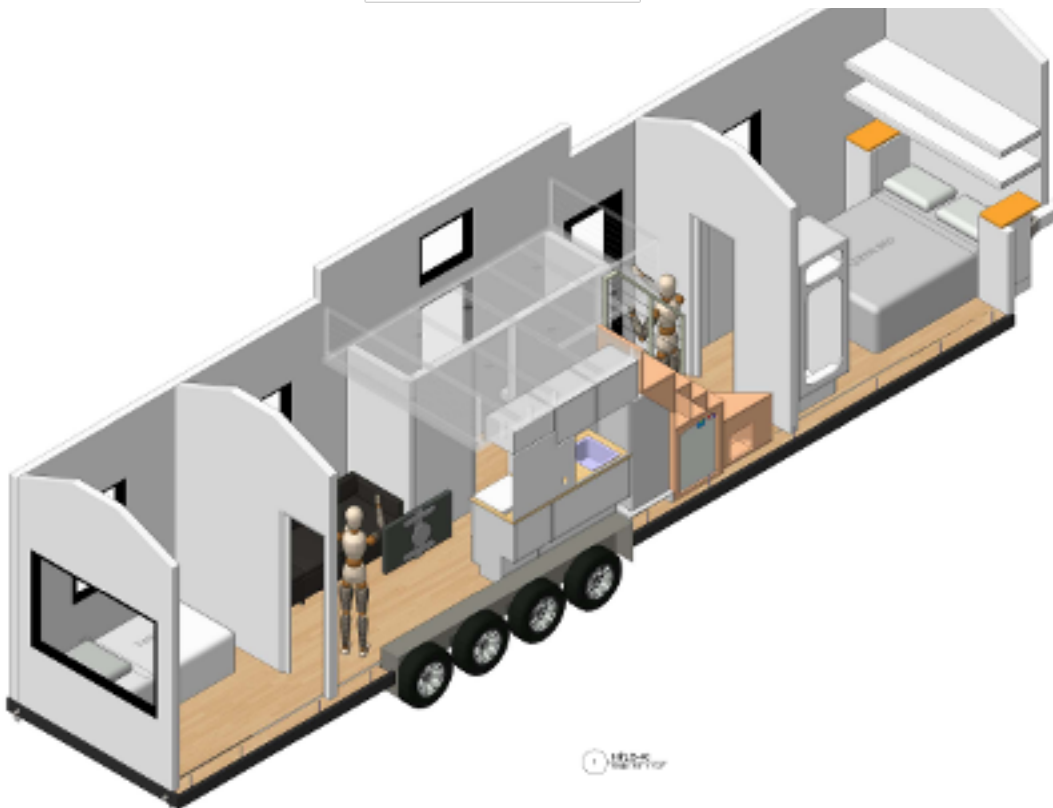
1 GN-28 Ground Plan  
Scale: 3/4" = 1'-0"

NOTE: DIMENSIONS ARE SHOWN AS A 28+8 GOOSENECK

# TWO BEDROOMS AND A LOFT!

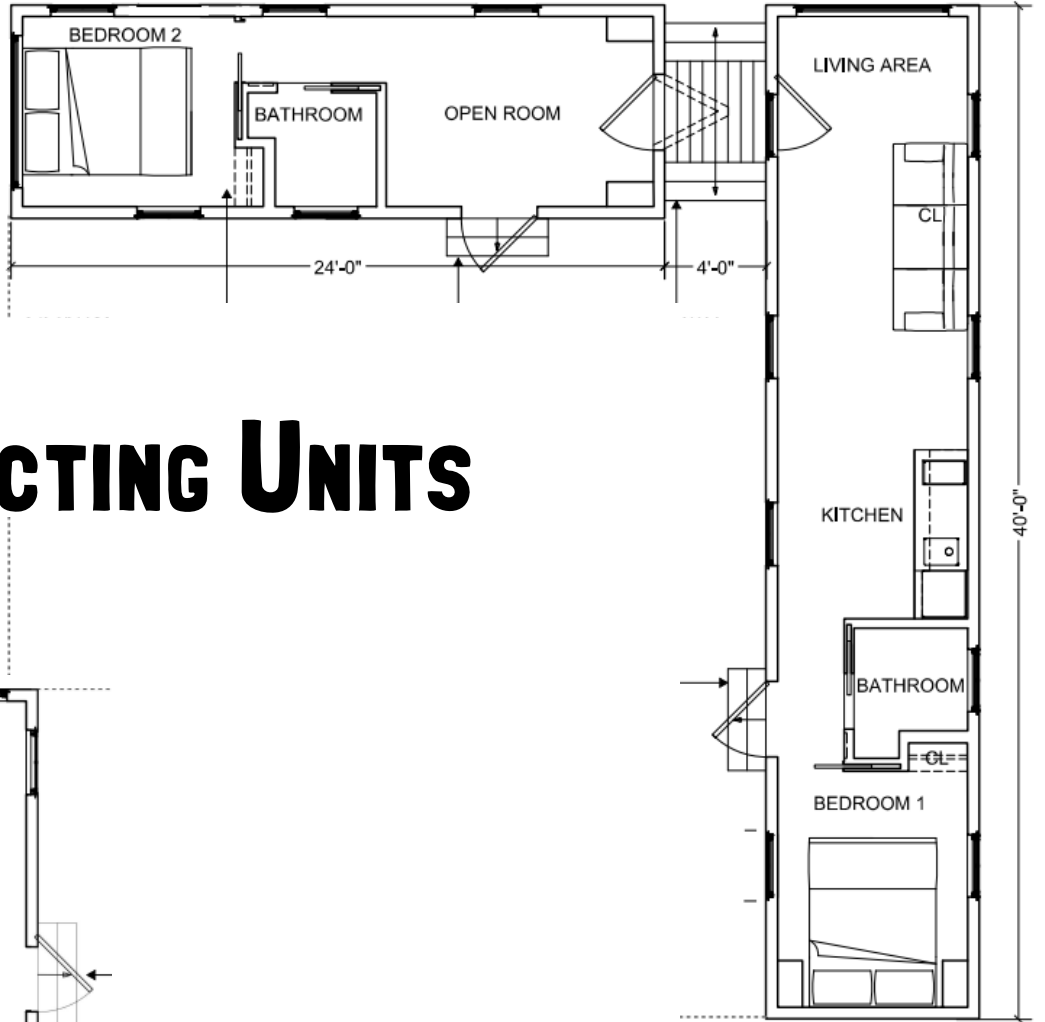


**Approx 350 sq. ft.**

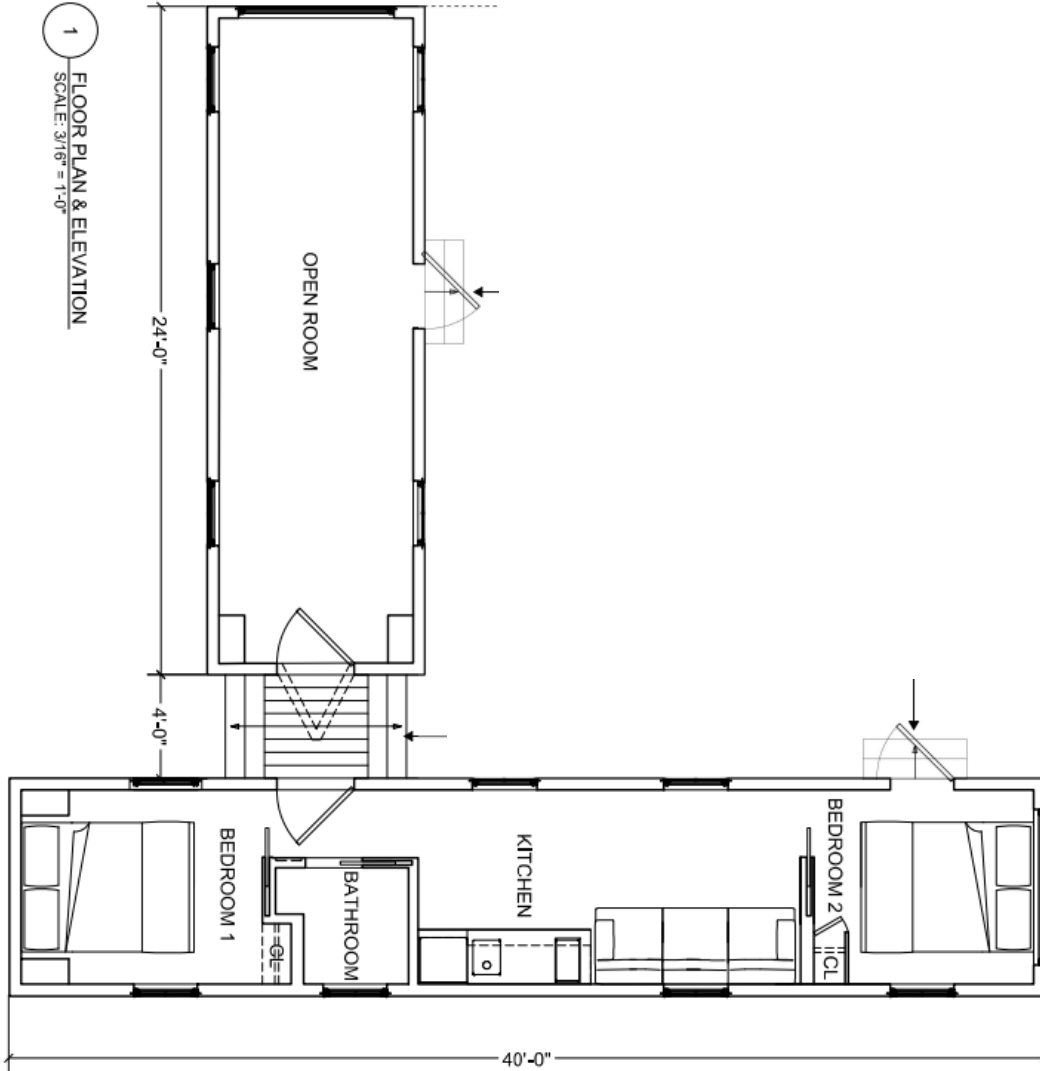


**NOTE: THIS IS A 40 FOOT HI-LO HOME**

# CONNECTING UNITS



1 FLOOR PLAN & ELEVATION  
SCALE: 3/16" = 1'-0"



# CONNECTING UNITS



# THE FINISHES:

EACH OF OUR LAYOUTS COMES  
IN ONE OF THREE FINISH STYLES

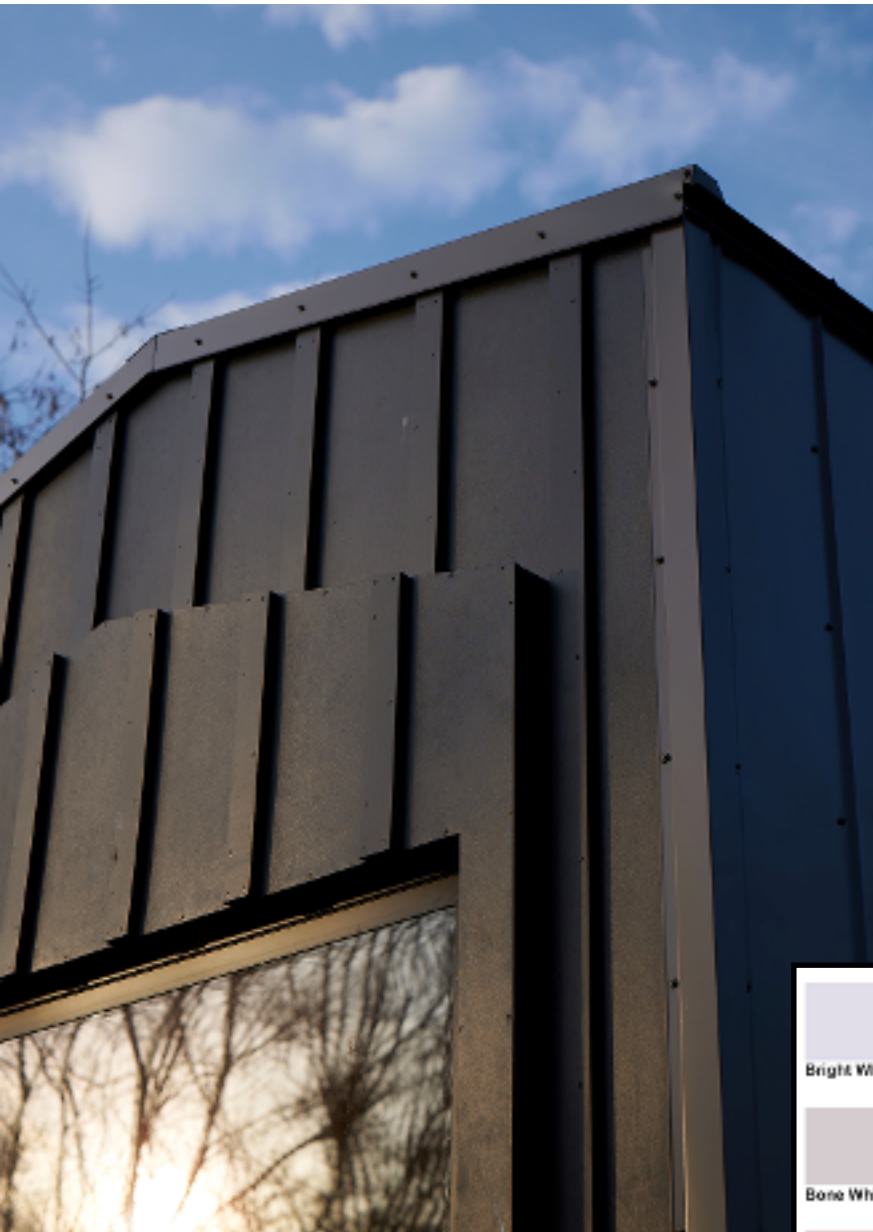
STANDARD

MODERN

FARMHOUSE

# THE STANDARD

THIS FINISH IS OUR BASE PACKAGE BUT LEAVES NOTHING TO BE DESIRED! WITH THE SAME BEAUTIFUL WHITE FINISHED WALLS, CUSTOMERS CAN ENJOY A CLEAN BLANK SLATE TO MAKE THE SPACE THEIR OWN.



## SELECTIONS

BEGINNING AT 28 FEET AND AVAILABLE AT UP TO 40 FOOT, THIS HOME HAS PLENTY OF ROOM TO MAKE

GROUND FLOOR ROOF



STANDARD SIDING CHOICES {ALL GROUND FLOOR OPTIONS, HI LO OPTIONS ARE ANY WITH A DOT AND

LP SMART SIDING COLOR UPGRADES:

- ANY SHERWIN WILLIAMS PAINT COLOR

				
Bright White (W1)	Light Stone (S1)	Beige (B1)	Clay (C1)	Tan (T1)
				
Bone White (W2)	Ash Gray (G1)	Pewter Gray (G2)	Charcoal (C2)	Bronze (B2)
				
Scarlet Red (R1)	Barn Red (R2)	Colonial Red (R3)	Burgundy (R4)	Brown (B3)
				
*Gold (G3)	*Patina Green (G4)	*Avocado Green (G5)	Forest Green (G6)	Evergreen (G7)
				
Slate Blue (B8)	Gallery Blue (B9)	*Dark Blue (B10)	Black (B11)	*Copper Penny (B12)

# THE MODERN

THIS FINISH IS OUR PREMIUM HOME PACKAGE AND FEATURES A BEAUTIFUL SATIN FINISHED WOOD WALL. EXPOSED FASTENERS PROVIDE A MODERN ASTHETIC TO MAKE YOUR HOME A TRUE SHOW PIECE.



## SELECTIONS

BEGINNING AT 28 FEET AND AVAILABLE AT UP TO 40 FOOT, THIS

AVAILABLE PREMIUM ROOF & SIDING COLORS:



THIS HOME COMES WITH UPGRADED BLACK

# THE FARMHOUSE

THIS FINISH IS OUR PREMIUM HOME PACKAGE AND FEATURES A TRIMMED WHITE WALL FOR THE FARMHOUSE AESTHETIC. WOOD BEAMS LINE THE LIVING ROOM CEILING TO ADD A BEAUTIFUL ACCENT.



## SELECTIONS

BEGINNING AT 28 FEET AND AVAILABLE AT UP TO 40 FOOT, THIS HOME HAS PLENTY OF ROOM TO MAKE IT YOUR OWN.

AVAILABLE PREMIUM LP SIDING COLORS:



THIS HOME COMES WITH UPGRADED BLACK MARVIN WINDOWS TO ADD AN EXTRA WOW FACTOR!