

CASTELLANOS Drapery Hardware

RETAIL PRICE GUIDE



TRACKS



METAL



MOTORIZATION



CASTELLANOS
DRAPERY HARDWARE

CASTELLANO'S KNOWLEDGEABLE STAFF masters the hundreds of small product details that spell the difference between a smooth job and a difficult one.

Behind this staff is one of the industry's best stocked warehouses for parts and supplies. Castellano's keeps all items in stock with no minimum orders and personalized attention to their clients' orders to create the "Best Experience" a window professional can have.



TABLE OF CONTENTS

1 TRACK SYSTEMS & TRAVERSING METAL ROD SYSTEM

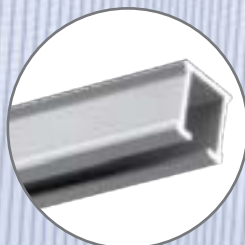
CS Heavy Duty Track System	3-4
CL Heavy Duty Cam Lock Track System	5-6
CM Heavy Duty Ceiling Mount Track System	7-8
CCS Heavy Duty Corded Track System	9-10
Drapery Motors	11-12
FMS Motorized Track System	13-14
FMS Plus Motorized Track System Plus	15-16
MTS Medical Track System	17-18
KS Light-Medium Duty Klick System	19-20
CKS Corded Klick System	21
PS Panel System	22
DS Design System	23
DS XL Design System XL	24
RBS Roman Blind System	25
RBS XL Roman Blind System XL	26
Deventer CRS Traversing Metal Rod System	27-28

29 APPENDIX

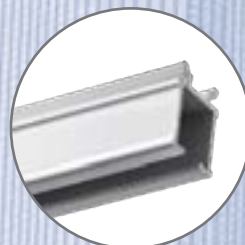
Bending & Curving	29
Batons	29
Workroom Components	30
Easyflex FES System	30
Ripplefold Carrier Counts	31-32

The most functional in the industry . . .
TRAVERSING SYSTEMS *from Castellanos*

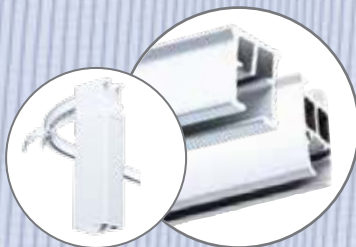
Castellanos Track Systems and Traversing Decorative Metal Rods are installed worldwide in several countries, in both residential and commercial projects. Features include bending and curving options, easy installation, and ultra quiet operation.



GS[®]

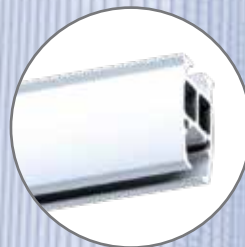


CL[®]

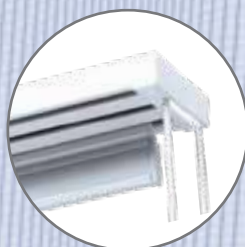


FMS[®] **FMS**[®] Plus

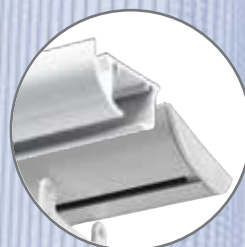
Motorized!



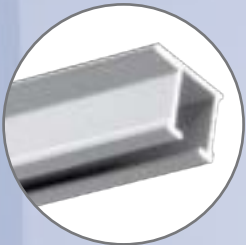
MTS[®]



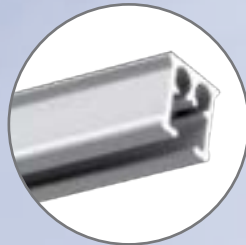
PS[®]



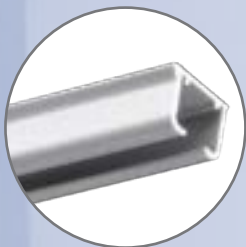
DS[®] **DS**^{XL}[®]



CM[®]



CCS[®]



KS[®]

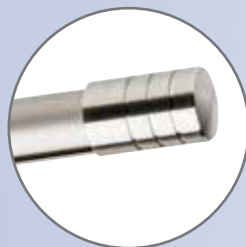


CKS[®]



RBS[®] **RBS^{XL}**[®]

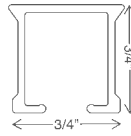
*RBS can be **Motorized!***



CRS[®]

CS® - Contract System

The Hotel Track - Hand draw track system designed for hotels or any other heavy-duty use. Aluminum extrusion, powder coated and lubricated for wall or ceiling mount. Can be used with wood pole fascia. Available in -25 white, -59 black, -65 brown, and -90 silver.



51012-25	white	12' x 20 tracks/bundle = 240'
51014-25	white	14' x 20 tracks/bundle = 280'
51016-25	white	16' x 20 tracks/bundle = 320'
51020-25	white	20' x 20 tracks/bundle = 400'
\$2.77/ft.		

51016-59	black	16' x 20 tracks/bundle = 320'
51016-65	brown	16' x 20 tracks/bundle = 320'
51016-90	silver	16' x 20 tracks/bundle = 320'
\$3.05/ft.		

BREAK PACK PRICING - Prices with this designation indicate a 20% up charge for broken pack quantities.

APPLICATION	PLEAT STYLE	STACKBACK	MOUNTING	MAX WEIGHT
Hand Draw	Ripplefold	6" per width	Wall	6 lbs/ft
One or Two Way	Pinch Pleat.	7" per width	Ceiling	Depending on application
	Cubicle	5" per width	Can be spliced	
	Accordiafold	5" per width		



CS Carriers



2107-25 60% fullness, 2 5/8" OC
2106-25 80% fullness, 2 3/8" OC
2105-25 100% fullness, 2 1/8" OC
2108-25 120% fullness, 1 7/8" OC
-59 Black + 10%
 Wheeled Connected Snap Carrier in plastic sleeve
 \$1.30 ea.
 \$1.08 ea./roll of 500



2006-25
 Wheeled Snap Carrier for accordiafold
 \$1.21 ea.
 \$1.01 ea./box of 500
2007-25
 Pendant for carrier
 \$0.19 ea.
 \$0.16 ea./box of 500



2004-25
-59 Black + 10%
 Snap Carrier for accordiafold
 \$0.48 ea.
 \$0.40 ea./box of 500



2114-25 60% fullness, 2 5/8" OC
2111-25 80% fullness, 2 3/8" OC
2112-25 100% fullness, 2 1/8" OC
2115-25 120% fullness, 1 7/8" OC
-59 Black + 10%
 Two-Piece Connected Snap Carrier w/ Square Base in plastic sleeve.
 Use 4 1/4" snap tape.
 \$1.05 ea.
 \$0.87 ea./roll of 500



52002-25
-59 Black, -65 Brown + 10%
 Slim Line Ball Bearing Carrier
 \$0.58 ea.
 \$0.48 ea./box of 1000



52008-25
-59 Black, -65 Brown + 10%
 Slim Line Klick Carrier draperies hang to conceal track
 \$0.92 ea.
 \$0.77 ea./box of 250



52108-25
-59 Black + 10%
 Stop Carrier prevents slide back
 \$1.88 ea.
 \$1.56 ea./box of 100



52003-25
-65 Brown + 10%
 Economy Slide
 \$0.25 ea.
 \$0.21/box of 2000



52100-25
 Ball Bearing Carrier w/ Stainless Hook slim line - use w/ grommets
 \$1.59 ea.
 \$1.32 ea./box of 1000



52106-25
 Contract Klick Carrier w/ Stainless Hook use with grommets
 \$1.88 ea.
 \$1.56 ea./box of 100



9001-25
 J Hook, 1 1/8" use with **52106-XX**
 \$0.28 ea.
 \$0.23 ea./box of 1,000



52005-25
 Button Slide Carrier
 \$0.20 ea.
 \$0.17 ea./box of 1000

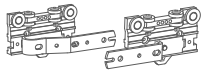


52105-25
 Button Slide Carrier w/ Hook
 \$0.62 ea.
 \$0.51 ea./box of 500

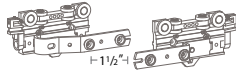


2202-25
 Button Slide Carrier w/ Breakaway Carrier
 \$1.44 ea.
 \$1.20 ea./bag of 5000

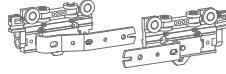
CS Masters



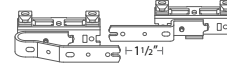
52502-25 Overlap R
52504-25 Underlap L
-59 Black + 10%
Standard Multi-Functional Master
Use stiffener w/ exposed baton or hooks w/ hidden baton
\$6.24 ea.
\$5.20 ea./box of 100



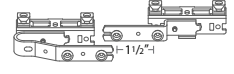
52502-25A Overlap R
52504-25A Underlap L
-59A Black + 10%
Standard Multi-Functional Master w/ snaps and baton adaptor
\$7.56 ea.
\$6.30 ea./box of 100



52502-25B Overlap R
52504-25B Underlap L
Standard Multi-Functional w/ baton adaptor for stiffener
\$6.24 ea.
\$5.20 ea./box of 50



52508-25 Overlap R
52509-25 Underlap L
-59 Black, -65 Brown + 10%
Swivel Foot Multi-Functional Master
Use with bends and curves
\$11.00 ea.
\$9.17 ea./box of 100



52508-25A Overlap R
52509-25A Underlap L
-59 Black, -65 Brown + 10%
Swivel Foot Multi-Functional Master w/ snaps
\$13.04 ea.
\$10.87 ea./box of 100



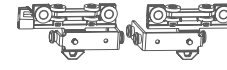
52501-25 Overlap R
52503-25 Underlap L
Stiffener Master
\$6.24 ea.
\$5.20 ea./box of 50



52401-25 Overlap R
52403-25 Underlap L
Stiffener Master w/ snaps and adaptor
\$7.65 ea.
\$6.37 ea./box of 50



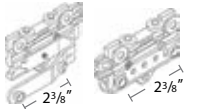
52410-25 Butt R
52409-25 Butt L
-59 Black + 10%
Standard Butt Master w/ snaps and for baton use
\$15.15 ea.
\$12.62 ea./box of 50



52411-25A Butt R
52412-25A Butt L
Wheeled Butt Master w/snap adaptor
Designed for hidden baton
\$26.75 ea.
\$22.29 ea./box of 50



52514-25 Overhead R
52515-25 Underhead L
Over the Top Baton Master
Designed for exposed baton
\$10.16 ea.
\$8.46 ea./box of 100



52601-25A Overlap R
52603-25A Underlap L
Extended Spacing Master w/ snaps and adaptor
\$5.05 ea.
\$4.21 ea./box of 100



88809-23-00 Overlap R
88809-24-00 Underlap L
-59 Black + 10%
Plastic Snap Master
\$10.95 ea.
\$9.12 ea./box of 25



2552-25
6" Extension Arm for master
Use w/ two one-way draws
\$3.70 ea.
\$3.09 ea./box of 50

CS Brackets



3001-25
-59 Black, -65 Brown, -90 Silver + 10%
Regular Duty Ceiling
\$1.10 ea.
\$0.91 ea./box of 100



3002-25
Klick On Ceiling with steel spring clip for use with drop ceilings
\$1.36 ea.
\$1.13 ea./box of 100



3901-25
-59 Black, -65 Brown, -90 Silver + 10%
Ceiling Splice/Bracket
\$1.88 ea.
\$1.56 ea./box of 50



53202-25
-59 Black, -65 Brown, -90 Silver + 10%
3" Smart Klick Wall Bracket w/ wide base, adjusts 3-4.5"
\$2.77 ea.
\$2.31 ea./box of 100

CS Other Components



52301-25
-59 Blk, -65 Brn, -90 Slv + 10%
End Cap w/ Economy Slide
must add 2004-25 for Ripplefold*
\$1.93 ea.
\$0.84 ea./box of 400



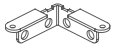
52302-25 Right Return
52303-25 Left Return
End Cap w/ Return Plate, Snap for pinch pleat or Ripplefold*
\$1.93 ea.
\$1.61 ea./box of 100



2305-25
-59 Blk, -65 Brn, -90 Slv + 10%
Twist On End Stop
\$1.88 ea.
\$1.56 ea./box of 100



52307-90
End Lock
\$0.83 ea.
\$0.69 ea./box of 100



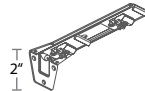
2308-25
Return Plate reversible, 2 1/2" return
\$7.08 ea.
\$5.90 ea./box of 100



2551-25
Small Extension Arm
\$3.71 ea.
\$3.09 ea./box of 50



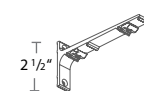
3003-25
-59 Black, -65 Brown, -90 Silver + 10%
Heavy Duty Ceiling w/ Smart Klick
\$1.88 ea.
\$1.56 ea./box of 100



53206-25
-59 Black, -65 Brown, -90 Silver + 10%
6" Smart Klick Double Wall Bracket w/ wide base adjusts 2.5"-4" & 6"-7.5"
\$4.55 ea.
\$3.79 ea./box of 50



3280-25
-59 Black, -65 Brown, -90 Silver + 10%
3" Wall Bracket for Wood Poles, heavy duty projection 2 1/2"
\$10.33 ea.
\$8.61 ea./box of 20



3281-25
-59 Black, -65 Brown + 10%
6" Double Wall Bracket for Wood Poles heavy duty projection 1 1/2", 5 1/2"
\$14.81 ea.
\$12.34 ea./box of 15



3903-25
-59 Blk, -65 Brn, -90 Slv + 10%
Track Connector and key



54110-25
36" Fiberglass Baton w/ snap
\$6.56 ea.
\$5.47 ea./box of 100
See all batons p. 31 of Appendix



3284-25
-65 Brown, -90 Silver + 10%
10" Triple Wall Bracket for Wood Poles, heavy duty projection 2", 6 5/8", 9 5/16"
\$27.47 ea. or \$22.89 ea./10



3006-25
Suspension Bracket Tube
\$106.04 ea.



3009-25
Suspension Bracket Klick System Clip
\$2.12ea.
\$1.76 ea./box of 50

CL - Cam Lock System

Aluminum extrusion, white, powder coated, lubricated for wall and ceiling mount. Designed for hotel use or any other heavy-duty application.



51512-25	white	12' x 20 tracks/bundle = 240'
51514-25	white	14' x 20 tracks/bundle = 280'
51516-25	white	16' x 20 tracks/bundle = 320'
51519-25	white	19' x 20 tracks/bundle = 380'
\$3.01/ft.		

BREAK PACK PRICING - Prices with this designation indicate a 20% up charge for broken pack quantities.

APPLICATION	PLEAT STYLE	STACKBACK	MOUNTING	MAX WEIGHT
Hand Draw	Ripplefold* 6" per width		Wall	6 lbs/ft
One or Two Way	Pinch Pleat. 7" per width		Ceiling	Depending on application
	Cubicle. 5" per width		Can be spliced	
	Accordiafold. 5" per width			

CL Carriers



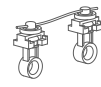
2107-25 60% fullness, 2 5/8" OC
2106-25 80% fullness, 2 3/8" OC
2105-25 100% fullness, 2 1/8" OC
2108-25 120% fullness, 1 7/8" OC
 Wheeled Connected Snap Carrier in plastic sleeve
 \$1.30 ea.
 \$1.08 ea./roll of 500



2006-25
 Wheeled Snap Carrier for accordiafold
 \$1.21 ea.
 \$1.01 ea./box of 500
2007-25
 Pendant for carrier
 \$0.19 ea.
 \$0.16 ea./box of 500



2004-25
 Snap Carrier for accordiafold
 \$0.48 ea.
 \$0.40 ea./box of 500



2114-25 60% fullness, 2 5/8" OC
2111-25 80% fullness, 2 3/8" OC
2112-25 100% fullness, 2 1/8" OC
2115-25 120% fullness, 1 7/8" OC
 Two-Piece Connected Snap Carrier w/ Square Base
 In plastic sleeve. Use 4 1/4" snap tape.
 \$1.05 ea.
 \$0.87 ea./roll of 500



52002-25
 Slim Line Ball Bearing Carrier
 \$0.58 ea.
 \$0.48 ea./box of 1000



52008-25
 Slim Line Klick Carrier
 Draperies hang to conceal track
 \$0.92 ea.
 \$0.77 ea./box of 250



52108-25
 Stop Carrier prevents slide back
 \$1.88 ea.
 \$1.56 ea./box of 100



52003-25
 Economy Slide
 \$0.25 ea.
 \$0.21/box of 2000



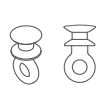
52100-25
 Ball Bearing Carrier w/ Stainless Hook
 slim line for use w/ grommets
 \$1.59 ea.
 \$1.32 ea./box of 1000



52106-25
 Contract Klick Carrier w/ Stainless Hook
 use with grommets
 \$1.88 ea.
 \$1.56 ea./box of 100



9001-25
 J Hook, 1 1/8" use with 52106
 \$0.28 ea.
 \$0.23 ea./box of 1,000



52005-25
 Button Slide Carrier
 \$0.20 ea.
 \$0.17 ea./box of 1000

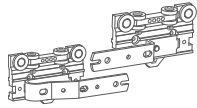


52105-25
 Button Slide Carrier w/ Hook
 \$0.62 ea.
 \$0.51 ea./box of 500

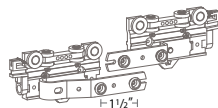


2202-25
 Button Slide w/ Breakaway Carrier
 \$1.44 ea.
 \$1.20 ea./bag of 5000

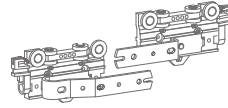
CL Masters



52502-25 Overlap R
52504-25 Underlap L
Standard Multi-Functional Master
Use stiffener w/ exposed baton
or hooks w/ hidden baton
\$6.24 ea.
\$5.20 ea./box of 100



52502-25A Overlap R
52504-25A Underlap L
Standard Multi-Functional
Master w/ snaps and baton
adaptor
\$7.56 ea.
\$6.30 ea./box of 100



52502-25B Overlap R
52504-25B Underlap L
Standard Multi-Functional
w/ baton adaptor for stiffener
\$6.24 ea.
\$5.20 ea./box of 50



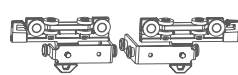
52501-25 Overlap R
52503-25 Underlap L
Stiffener Master
\$6.24 ea.
\$5.20 ea./box of 100



52401-25 Overlap R
52403-25 Underlap L
Stiffener Master
w/ snaps and adaptor
\$7.65 ea.
\$6.37 ea./box of 50



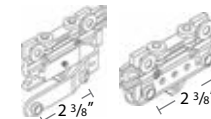
52410-25 Butt R
52409-25 Butt L
Standard Butt Master
w/ snaps and for baton use
\$15.15 ea.
\$12.62 ea./box of 50



52411-25A Butt R
52412-25A Butt L
Wheeled Butt Master
w/snap adaptor
Designed for hidden baton
\$26.75 ea.
\$22.29 ea./box of 50



52514-25 Overhead R
52515-25 Underhead L
Over the Top Baton Master
Designed for exposed baton
\$10.16 ea.
\$8.46 ea./box of 50



52601-25A Overlap R
52603-25A Underlap L
Extended Spacing Master
w/ snaps and adaptor
\$5.05 ea.
\$4.21 ea./box of 100

CL Brackets



53502-25
3" Wall Bracket
adjusts 3"- 4 1/2"
w/ metal cam lock
\$3.62 ea.
\$3.01 ea./box of 100



53506-25
6" Double Wall Bracket
adjusts 2 1/2"- 4" & 6"- 7 1/2"
w/ metal cam lock
\$4.45 ea.
\$3.71 ea./box of 50



53507-25
Ceiling Bracket
w/ metal cam lock
\$1.37 ea.
\$1.14 ea./box of 100

CL Other Components



52301-25
End Cap w/ Economy Slide
must add 2004-25 for Ripplefold*
\$1.01 ea.
\$0.84 ea./box of 400



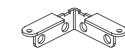
52302-25 Right Return
52303-25 Left Return
End Cap w/ Return Plate & Snap
for pinch pleat or Ripplefold*
\$1.93 ea.
\$1.61 ea./box of 100



2305-25
Twist On End Stop
\$1.88 ea.
\$1.56 ea./box of 100



52307-90
End Lock
\$0.83 ea.
\$0.69 ea./box of 100



2308-25
Return Plate
reversible, 2 1/2" return
\$7.08 ea.
\$5.90 ea./box of 100



54110-25
36" Fiberglass Baton
w/ snap
\$6.56 ea.
\$5.47 ea./box of 100
See all batons p. 31 of Appendix



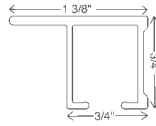
2551-25
Small Extension Arm
\$3.71 ea.
\$3.09 ea./box of 50

CS CL **CM** CCS SHUTTLE FMS FMS PLUS MTS KS CKS PS DS DSXL RBS CRS



CM[®] - CEILING MOUNT

Heavy duty for direct ceiling mount - holes every 16". Aluminum extrusion, white.



51212-25	white	12' x 20 tracks/bundle = 240'
51214-25	white	14' x 20 tracks/bundle = 280'
51216-25	white	16' x 20 tracks/bundle = 320'
\$3.05/ft.		

BREAK PACK PRICING - Prices with this designation indicate a 20% up charge for broken pack quantities.

APPLICATION	PLEAT STYLE	STACKBACK	MOUNTING	MAX WEIGHT
Hand Draw	Ripplefold*	6" per width	Direct Ceiling	6 lbs/ft
One or Two Way	Pinch Pleat	7" per width	Cannot be Spliced	Depending on application
	Cubicle	5" per width		
	Accordiafold	5" per width		

Tracks CM

CM Carriers



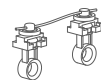
2107-25 60% fullness, 2 5/8" OC
2106-25 80% fullness, 2 3/8" OC
2105-25 100% fullness, 2 1/8" OC
2108-25 120% fullness, 1 7/8" OC
 Wheeled Connected Snap Carrier in plastic sleeve
 \$1.30 ea.
 \$1.08 ea./roll of 500



2006-25
 Wheeled Snap Carrier for accordiafold
 \$1.21 ea.
 \$1.01 ea./box of 500
2007-25
 Pendant for carrier
 \$0.19 ea.
 \$0.16 ea./box of 500



2004-25
 Snap Carrier for accordiafold
 \$0.48 ea.
 \$0.40 ea./box of 500



2114-25 60% fullness, 2 5/8" OC
2111-25 80% fullness, 2 3/8" OC
2112-25 100% fullness, 2 1/8" OC
2115-25 120% fullness, 1 7/8" OC
 Two-Piece Connected Snap Carrier w/ Square Base
 In plastic sleeve. Use 4 1/4" snap tape.
 \$1.05 ea.
 \$0.87 ea./roll of 500



52002-25
 Slim Line Ball Bearing Carrier
 \$0.58 ea.
 \$0.48 ea./box of 1000



52008-25
 Slim Line Klick Carrier
 Draperies hang to conceal track
 \$0.92 ea.
 \$0.77 ea./box of 250



52108-25
 Stop Carrier prevents slide back
 \$1.88 ea.
 \$1.56 ea./box of 100



52003-25
 Economy Slide
 \$0.25 ea.
 \$0.21/box of 2000



52100-25
 Ball Bearing Carrier w/ Stainless Hook
 slim line for use w/ grommets
 \$1.59 ea.
 \$1.32 ea./box of 1000



52106-25
 Contract Klick Carrier w/ Stainless Hook
 use with grommets
 \$1.88 ea.
 \$1.56 ea./box of 100



9001-25
 J Hook, 1 1/8" use with 52106
 \$0.28 ea.
 \$0.23 ea./box of 1,000



52005-25
 Button Slide Carrier
 \$0.20 ea.
 \$0.17 ea./box of 1000

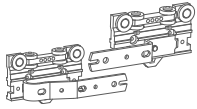


52105-25
 Button Slide Carrier w/ Hook
 \$0.62 ea.
 \$0.51 ea./box of 500

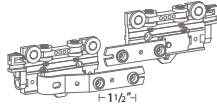


2202-25
 Button Slide Carrier w/ Breakaway Carrier
 \$1.44 ea.
 \$1.20 ea./bag of 5000

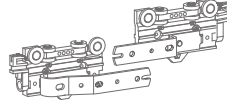
CM Masters



52502-25 Overlap R
52504-25 Underlap L
Standard Multi-Functional Master
Use stiffener w/ exposed baton or hooks w/ hidden baton
\$6.24 ea.
\$5.20 ea./box of 100



52502-25A Overlap R
52504-25A Underlap L
Standard Multi-Functional Master w/ snaps and baton adaptor
\$7.56 ea.
\$6.30 ea./box of 100



52502-25B Overlap R
52504-25B Underlap L
Standard Multi-Functional w/ baton adaptor for stiffener
\$6.24 ea.
\$5.20 ea./box of 50



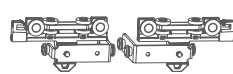
52501-25 Overlap R
52503-25 Underlap L
Stiffener Master
\$6.24 ea.
\$5.20 ea./box of 50



52401-25 Overlap R
52403-25 Underlap L
Stiffener Master w/ snaps and adaptor
\$7.65 ea.
\$6.37 ea./box of 50



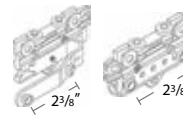
52410-25 Butt R
52409-25 Butt L
Standard Butt Master w/ snaps and for baton use
\$15.15 ea.
\$12.62 ea./box of 50



52411-25A Butt R
52412-25A Butt L
Wheeled Butt Master w/snap adaptor
Designed for hidden baton
\$26.75 ea.
\$22.29 ea./box of 50



52514-25 Overhead R
52515-25 Underhead L
Over the Top Baton Master
Designed for exposed baton
\$10.16 ea.
\$8.46 ea./box of 100



52601-25A Overlap R
52603-25A Underlap L
Extended Spacing Master w/ snaps and adaptor
\$5.05 ea.
\$4.21 ea./box of 100

CM Other Components



52301-25
End Cap w/ Economy Slide
must add 2004-25 for Ripplefold*
\$1.01 ea.
\$0.84 ea./box of 400



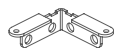
52302-25 Right Return
52303-25 Left Return
End Cap w/ Return Plate & Snap for pinch pleat or Ripplefold*
\$1.93 ea.
\$1.61 ea./box of 100



2305-25
Twist On End Stop
\$1.88 ea.
\$1.56 ea./box of 100



52307-90
End Lock
\$0.83 ea.
\$0.69 ea./box of 100



2308-25
Return Plate
reversible, 2 1/2" return
\$7.08 ea.
\$5.90 ea./box of 100



2551-25
Small Extension Arm
\$3.71 ea.
\$3.09 ea./box of 50

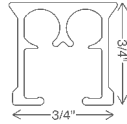


54110-25
36" Fiberglass Baton w/ snap
\$6.56 ea.
\$5.47 ea./box of 100
See all batons p. 31 of Appendix

CS CL CM **CCS** SHUTTLE FMS FMS PLUS MTS KS CKS PS DS DSXL RBS CRS

CCS® - Contract Cord System

Aluminum extrusion, white, powder coated, lubricated, wall and ceiling mount with separate channels for use with cord. Can be used with wood pole fascia. Available in -25 white, -65 brown and -90 silver.



51112-25	white	12' x 20 tracks/bundle = 240'
51114-25	white	14' x 20 tracks/bundle = 280'
51116-25	white	16' x 20 tracks/bundle = 320'
51120-25	white	20' x 20 tracks/bundle = 400'
\$4.31/ft.		

51116-65	brown	16' x 20 tracks/bundle = 320'
51116-90	silver	16' x 20 tracks/bundle = 320'
\$4.74/ft		

BREAK PACK PRICING - Prices with this designation indicate a 20% up charge for broken pack quantities.

APPLICATION	PLEAT STYLE	STACKBACK	MOUNTING	MAX WEIGHT
Cord Draw	Ripplefold*6" per width		Wall	4 lbs/ft
One or Two Way	Pinch Pleat7" per width		Ceiling	Depending on application
Bead chain available	Accordiafold. . . .5" per width			

WARNING

All assembled corded products meet ANSI child safety standards and will come with a warning label.



Tracks CCS

CCS Carriers



2114-25 60% fullness, 2 5/8" OC
2111-25 80% fullness, 2 3/8" OC
2112-25 100% fullness, 2 1/8" OC
2115-25 120% fullness, 1 7/8" OC
 Two-Piece Connected Snap Carrier w/ Square Base
 In plastic sleeve. Use 4 1/4" snap tape.
 \$1.05 ea.
 \$0.87 ea./roll of 500



52008-25
-65 Brown +10%
 Slim Line Klick Carrier
 Draperies hang to conceal track
 \$0.92 ea.
 \$0.77 ea./box of 250



52108-25
 Stop Carrier
 prevents slide back
 \$1.88 ea.
 \$1.56 ea./box of 100



52003-25
-65 Brown + 10%
 Economy Slide
 \$0.25 ea.
 \$0.21/box of 2000



52004-25
 Low Profile Ball Bearing
 \$1.30 ea.
 \$1.08 ea./box of 1000



52106-25
 Contract Klick Carrier w/ Stainless Hook
 use with grommets
 \$1.88 ea.
 \$1.56 ea./box of 100

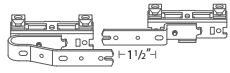


52005-25
 Button Slide Carrier
 \$0.20 ea.
 \$0.17 ea./box of 1000

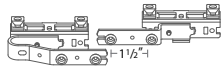


52105-25
 Button Slide Carrier w/ Hook
 \$0.62 ea.
 \$0.51 ea./box of 500

CCS Masters



52508-25 Overlap R
52509-25 Underlap L
-65 Brown + 10%
Swivel Foot Multi-Functional Master
Use with bends and curves
\$11.00 ea.
\$9.17 ea./box of 100



52508-25A Overlap R
52509-25A Underlap L
-65 Brown + 10%
Swivel Foot Multi-Functional Master w/ snaps
\$13.04 ea.
\$10.87 ea./box of 100



52410-25 Butt R
52409-25 Butt L
Standard Butt Master w/ snaps and for baton use
\$15.15 ea.
\$12.62 ea./box of 50

CCS Brackets



3001-25
-65 Brown + 10%
Regular Duty Ceiling
\$1.10 ea.
\$0.91 ea./box of 100



3002-25
Click On Ceiling with steel spring clip for use with drop ceilings
\$1.36 ea.
\$1.13 ea./box of 100



3003-25
-65 Brown + 10%
Heavy Duty Ceiling w/ Smart Klick
\$1.88 ea.
\$1.56 ea./box of 100



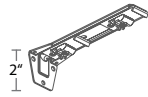
3006-25
Suspension Bracket Tube
\$106.04 ea. 10/box



3009-25
Suspension Bracket Klick System Clip
\$2.12ea.
\$1.76 ea./box of 50



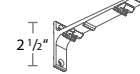
53202-25
-65 Brown + 10%
3" Smart Klick Wall Bracket w/ wide base adjusts 3"-4 1/2"
\$2.77 ea.
\$2.31 ea./box of 100



53206-25
-65 Brown + 10%
6" Smart Klick Double Wall Bracket w/ wide base adjusts 2 1/2"-4" & 6"-7 1/2"
\$4.55 ea.
\$3.79 ea./box of 50



3280-25
-65 Brown + 10%
3" Wall for Wood Poles heavy duty projection 2 1/2"
\$10.33 ea.
\$8.61 ea./box of 20



3281-25
-65 Brown + 10%
6" Double Wall for Wood Poles heavy duty projection 1 1/2", 5 1/2"
\$14.81 ea.
\$12.34 ea./box of 15



3284-25
-65 Brown + 10%
10" Triple Wall Bracket for Wood Poles, heavy duty projection 2", 6 5/8", 9 5/16"
\$27.47 ea.
\$22.89 ea./box of 10

CCS Other Components



3903-25
-65 Brown +10%
Track Connector and key 3904-00
\$15.89 ea.
\$13.24 ea./box of 10



3901-25
-65 Brown + 10%
Ceiling Splice/Bracket
\$1.88 ea.
\$1.56 ea./box of 50



52804-25
CCS Return Insert with snap or hook
\$5.19 ea.
\$4.33 ea./box 25



52801-25
-65 Brown, -90 Silver + 10%
End Pulley 2 1/4" Reversible, use on right or left
\$9.58 ea.
\$7.98 ea./box 25



52801-25A Right End Pulley w/ Snap
52801-25B Left End Pulley w/ Snap 2 1/4 Reversible, for Ripplefold*
\$10.42 ea.
\$8.68 ea./box 25



52803-25
-65 Brown, -90 Silver + 10%
Small End Pulley 1 1/2" Reversible, use with Butt Masters and one-way draw
\$9.58 ea.
\$7.98 ea./box 25



52510-25
-65 Brown + 10%
Cord Connector
\$2.03 ea.
\$1.69 ea./box 100



2305-25
-65 Brown, -90 Silver + 10%
Twist On End Stop use with curved tracks
\$1.88 ea.
\$1.56 ea./box of 100




9004-25
3.2mm Cord
273.4 yds./roll
\$1.74/yd.
\$1.45/yd. for 273.4 yards



49500-00
Tension Device For child safety
\$7.31 ea.
\$6.09 ea./box 250

Shuttle Family of Motors

Touch Impulse Technology opens or closes drapes with a gentle pull. Integrated emergency control insures manual operation of the drapery in case of power failure. The Shuttle modular motor allows for various control options including RF, wall switch, building/hotel automation, serial communication, Z-Wave, and others.



All Shuttle Motors include a 10-Year Warranty - the only one on the market.



Comparison Chart

	Eco Shuttle HD (M)	Eco Shuttle (S)
DIMENSIONS	Motor: 2.76" x 1.97" x 7.5 / Receiver Internal	Motor: 2.76" x 1.97" x 7.5" / Receiver Internal
MOUNTING	Wall or Ceiling; Can be spliced	Wall or Ceiling; Can be spliced
MAXIMUM WEIGHT	160 lbs per motor / 120 lbs per motor - curved track	100 lbs per motor / 90 lbs per motor - curved track
TRAVEL SPEED	5.5" per second standard / 7" per sec maximum	5.5" per second standard / 7" per sec maximum
RECEIVER	Internal	Internal
AMPERAGE	.6 amps / 70 watts / 110 volt plug-n-play	.35 amps / 40 watts / 110 volt plug-n-play
TORQUE	1.5 Nm	1.0 Nm
NOISE LEVEL	< 40 dB(A)	< 40 dB(A)
TOUCH IMPULSE TECHNOLOGY	✓	✓
EMERGENCY CONTROL	✓	
RF COMMUNICATION STANDARD	✓	w/ dry contacts ✓
Z-WAVE COMMUNICATION		✓
AUTOMATION SYSTEM COMPATIBLE	w/ dry contacts ✓	w/ dry contacts ✓
10-YEAR WARRANTY	✓	✓

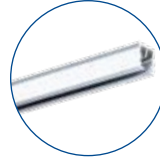
Shuttle Motors

SPECS

FEATURES

Choose your Motor & pair with one of these systems:

FMS Track P. 13



FMS Plus Track P. 15



Z-Wave Shuttle

Motor: 2.76" x 1.97" x 7.5" / Receiver Internal

Wall or Ceiling; Can be spliced

160 lbs per motor / 120 lbs per motor - curved track

5.5" per second standard / 7" per sec maximum

Internal

.6 amps / 70 watts / 110 volt plug-n-play

1.5 Nm

< 40 dB(A)

✓

✓

✓

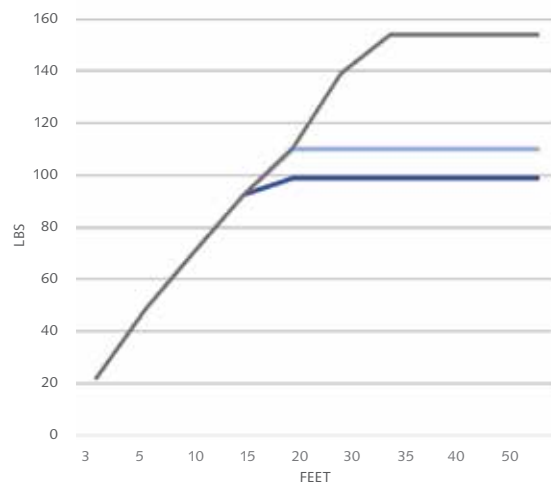
✓

✓

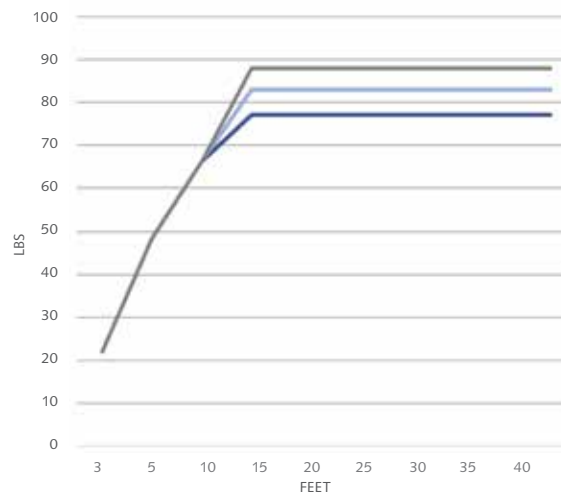
Load Tables

— Straight — One Bend/Curve — Two Bends

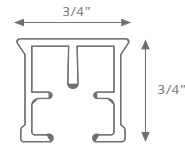
ECO Shuttle HD (M) and Z-WAVE Shuttle



ECO SHUTTLE (S)



FMS® - Motorized System



51323-25
-59 Black +10%
23' aluminum extrusion, powder coated, lubricated FS track
\$4.96 ea. 10/bundle

ASSEMBLED PRICING includes track, motor, power supply, and Diamond remote or wall switch. Add 10% for black. Freight is additional.

FMS Track with Eco-Shuttle HD:
First 4 feet = \$1,661.04, Each add'l foot = \$26.22. Add 10% for black motor, track & components.

FMS Track with Eco-Shuttle:
First 4 feet = \$1,510.04, Each add'l foot = \$26.22

FMS Track with Z-Wave Shuttle:
First 4 feet = \$1,833.21, Each add'l foot = \$26.22.

BREAK PACK PRICING - Prices with this designation indicate a 20% up charge for broken pack quantities.



Tracks
FMS

FMS Motors, Power Supplies and Control Options



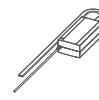
52925-25
Eco Shuttle HD
-59 Black +10%
w/ built-in receiver
\$948.67 ea. 1/box



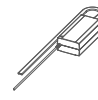
52939-25
Eco Shuttle
w/ built-in receiver
\$768.40 ea. 1/box



52944-25
Z-Wave Shuttle
w/ built-in receiver
\$1,289.66 ea. 1/box



52928-25 7' 6" power cord
52934-25 16' power cord
24 v Power Supply
for Eco HD & Z-Wave Shuttles
\$120.62 ea. 1/box



52940-25
24 v Power Supply
for Eco Shuttle
7' power cord
\$120.62 ea. 1/box



52931-25D white
52931-59D black
-59 Black +10%
Diamond Remote
RF, 6 channel w/ holder
Range 98'
\$198.79 ea. 1/box



52933-25 white
52933-59 black
-59 Black +10%
Diamond Wall Switch
2 channel
\$151.48 ea. 1/box



52943-25 white
52943-59 black
-59 Black +10%
RF Multi Wall Switch
16 channel
LED Screen
\$259.84 ea. 1/box
NOT PART OF ASSEMBLED SET



52945-25
Z-Wave Remote
\$336.81 ea. 1/box
NOT PART OF ASSEMBLED SET

FMS Transport Components



9012-25
Transport Belt
Kevlar reinforced
\$9.93/ft.
\$8.27/ft. 328 ft./roll



52512-25
-59 Black +10%
Transport Belt Connector
Connects belt to master
\$10.29 ea.
\$8.59 ea. 50/box



52903-25
-59 Black +10%
Motor Pulley
Connects motor to track
\$81.24 ea. 1/box



52910-25
-59 Black +10%
Return Pulley
\$30.33 ea. 1/box

FMS Carriers



52008-25
-59 Black +10%
Slim Line Klick Carrier
Draperies hang to
conceal track
\$0.92 ea.
\$0.77 ea./box of 250

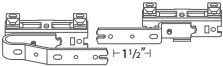


52009-25
Ball Bearing Carrier
for motorization
\$1.30 ea.
\$1.08 ea./box of 250



2114-25 60% fullness, 2 5/8" OC
2111-25 80% fullness, 2 3/8" OC
2112-25 100% fullness, 2 1/8" OC
2115-25 120% fullness, 1 7/8" OC
-59 Black +10%
Two-Piece Connected Snap Carrier w/ Square Base
In plastic sleeve. Use 4 1/4" snap tape.
\$1.05 ea.
\$0.87 ea./roll of 500

FMS Masters



52508-25 Overlap R
52509-25 Underlap L
-59 Black +10%
Swivel Foot
Multi-Functional Master
\$11.00 ea.
\$9.17 ea./box of 100



52508-25A Overlap R
52509-25A Underlap L
-59 Black +10%
Swivel Foot
Multi-Functional Master
w/ snap
\$13.04 ea.
\$10.87 ea./box of 100



52409-25 Butt L
52410-25 Butt R
Butt Master
w/ 3 snaps for Ripplefold*
\$15.15 ea.
\$12.62 ea./box of 50



2552-25
6" Extension Arm
For master
Use w/ two
\$3.70 ea.
\$3.09 ea./box of 50

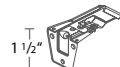


2551-25
Small Extension Arm
\$3.71 ea.
\$3.09 ea./box of 50

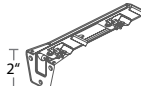
FMS Brackets and Other Components



3003-25
-59 Black +10%
HD Ceiling Bracket
w/ Smart Klick
\$1.88 ea.
\$1.56 ea./box of 100



53202-25
-59 Black +10%
3" Smart Klick Wall Bracket
w/ wide base
adjusts 3"-4 1/2"
\$2.77 ea.
\$2.31 ea./box of 100



53206-25
-59 Black +10%
6" Smart Klick
Double Wall Bracket
w/ wide base
adjusts 2 1/2"-4" & 6"-7.5"
\$4.55 ea.
\$3.79 ea./box of 50



3006-25
Suspension Bracket Tube
\$106.04 ea. 10/box



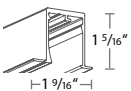
3007-25
Suspension Bracket
Insert Screw, 39" extension
\$6.85 ea.
\$5.71 ea./box of 100



3008-25
Suspension Bracket Top
\$38.27 ea.
\$31.89 ea./box of 25



3009-25
Suspension Bracket
Klick System Clip
\$2.12ea.
\$1.76 ea./box of 50



51723-25
Recess Profile, 23'
\$13.93/ft.



51724-25
Recess Profile Fixing Strip, 23'
\$2.93/ft.



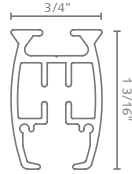
53914-25
Recess Profile Wedge
\$4.10ea.
\$3.41 ea./box of 10



3903-25
-59 Black + 10%
Track Connector and
key **3904-00**
\$15.89 ea.
\$13.24 ea./box of 10

FMS® Plus - Motorized System Plus

This completely new motorized track makes it possible to create even longer treatments and will hold 8 lbs/ft. Just as the original FS Motorized track provides ultra-quiet and smooth operation of your draperies, so does the FMS Plus track. White aluminum extrusion, powder coated. Wall, ceiling or recess mount.



51623-25 white 23' x 10 tracks/bundle = 230'
\$10.53/ft.

ASSEMBLED PRICING includes track, motor, power supply, and Diamond remote or wall switch. Freight is additional.

FMS Plus Track with Eco-Shuttle HD:
First 4 feet = \$1,788.94, Each add'l foot = \$65.13

FMS Plus Track with Eco-Shuttle:
First 4 feet = \$1,667.05, Each add'l foot = \$65.13

FMS Plus Track with Z-Wave Shuttle:
First 4 feet = \$1,961.11, Each add'l foot = \$65.13

BREAK PACK PRICING - Prices with this designation indicate a 20% up charge for broken pack quantities.

FMS Plus Motors, Power Supplies and Control Options



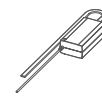
52925-25
Eco Shuttle HD
-59 Black +10%
w/ built-in receiver
\$948.67 ea. 1/box



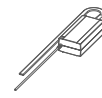
52939-25
Eco Shuttle
w/ built-in receiver
\$768.40 ea. 1/box



52944-25
Z-Wave Shuttle
w/ built-in receiver
\$1,289.66 ea. 1/box



52928-25 7' 6" power cord
52934-25 16' power cord
24 v Power Supply
for Eco HD & Z-Wave Shuttles
\$120.62 ea. 1/box



52940-25
24 v Power Supply
for Eco Shuttle
7' power cord
\$120.62 ea. 1/box



52931-25D white
52931-59D black
-59 Black +10%
Diamond Remote
RF, 6 channel w/ holder
Range 98'
\$198.79 ea. 1/box



52933-25 white
52933-59 black
-59 Black +10%
Diamond Wall Switch
2 channel
\$151.48 ea. 1/box

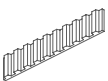


52943-25 white
52943-59 black
-59 Black +10%
RF Multi Wall Switch
16 channel, LED Screen
\$259.84 ea. 1/box
NOT PART OF ASSEMBLED SET



52945-25
Z-Wave Remote
\$336.81 ea. 1/box
NOT PART OF ASSEMBLED SET

FMS Plus Transport Components



9112-25
Transport Belt
\$6.33/ft.
\$5.27/ft. /roll of 328 ft.



53903-25
Motor Pulley
Connects motor to track
\$69.01 ea. 1/box



53910-25
Return Pulley
\$34.49 ea. 1/box



53911-25
Upside Down Pulley
\$69.01 ea. 1/box



53912-25
Coverplate
for Recess Motor
and Return Pulley
\$3.76 ea. 1/box



53913-25
Coverplate
for Recess,
Upside Down,
and Return Pulley
\$3.16 ea. 1/box

FMS Plus Carriers



52008-25
Slim Line Klick Carrier
Draperies hang to
conceal track
\$0.92 ea.
\$0.77 ea./box of 250

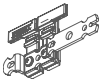


52004-25
Low Profile
Ball Bearing Carrier
\$1.30 ea.
\$1.08 ea./box of 1000

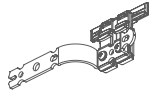


2114-25 60% fullness, 2 5/8" OC
2111-25 80% fullness, 2 3/8" OC
2112-25 100% fullness, 2 1/8" OC
2115-25 120% fullness, 1 7/8" OC
Two-Piece Connected Snap Carrier w/ Square Base
In plastic sleeve. Use 4 1/4" snap tape.
\$1.05 ea.
\$0.87 ea./roll of 500

FMS Plus Master



53908-25 Overlap Right
FMS Plus Master Carrier
\$33.18 ea.
\$27.65 ea./box of 10



53909-25 Underlap Left
FMS Plus Master Carrier
Assembly required
\$28.99 ea.
\$24.16 ea./box of 10

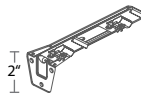
FMS Plus Brackets



3003-25
HD Ceiling Bracket
w/ Smart Klick
\$1.88 ea.
\$1.56 ea./box of 100



53202-25
3" Smart Klick Wall Bracket
w/ wide base
adjusts 3"-4 1/2"
\$2.77 ea.
\$2.31 ea./box of 100



53206-25
6" Smart Klick
Double Wall Bracket
w/ wide base
adjusts 2 1/2"-4" & 6"-7.5"
\$4.55 ea.
\$3.79 ea./box of 50



3800-25
MTS Wall Bracket
To install the rod inside a frame
\$18.44 ea. 20/box



3006-25
Suspension Bracket Tube
\$106.04 ea. 10/box



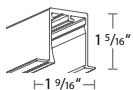
3007-25
Suspension Bracket
Insert Screw, 39" extension
\$6.85 ea.
\$5.71 ea./box of 100



3008-25
Suspension Bracket Top
\$38.27 ea.
\$31.89 ea./box of 25



3009-25
Suspension Bracket
Klick System Clip
\$2.12 ea.
\$1.76 ea./box of 50



51723-25
Recess Profile, 23'
\$13.93/ft.



51724-25
Recess Profile Fixing Strip, 23'
\$2.93/ft.



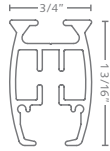
53914-25
Recess Profile Wedge
\$4.10ea.
\$3.41 ea./box of 10

CS CL CM CCS SHUTTLE FMS FMS PLUS **MTS** KS CKS PS DS DSXL RBS CRS

MTS® - Medi Track System



Aluminum extrusion, white, powder coated, lubricated for wall or ceiling mount.
For heavy duty applications at 8 lbs/ft.



51623-25 white 23' x 10 tracks/bundle = 230'
\$10.53/ft.

ASSEMBLED PRICING includes track, carriers, masters, brackets and 36" fiberglass baton. Indicate pinch pleat, Ripplefold*, accordiafold or cubicle.

BREAK PACK PRICING - Prices with this designation indicate a 20% up charge for broken pack quantities.

APPLICATION	PLEAT STYLE	STACKBACK	MOUNTING	MAX WEIGHT
Hand Draw	Ripplefold 6" per width		Wall	8 lbs/ft
One or Two Way	Pinch Pleat 7" per width		Ceiling	
	Cubicle 5" per width		Can be spliced	

Tracks
MTS

MTS Carriers



2004-25
Snap Carrier
for accordiafold
\$0.48 ea.
\$0.40 ea./box of 500



2114-25 60% fullness, 2 5/8" OC
2111-25 80% fullness, 2 3/8" OC
2112-25 100% fullness, 2 1/8" OC
2115-25 120% fullness, 1 7/8" OC
Two-Piece Connected Snap Carrier
w/ Square Base
In plastic sleeve. Use 4 1/4" snap tape
\$1.05 ea.
\$0.87 ea./roll of 500



52008-25
Slim Line Klick Carrier
Draperies hang to
conceal track
\$0.92 ea.
\$0.77 ea./box of 250



52003-25
Economy Slide
\$0.25 ea.
\$0.21/box of 2000



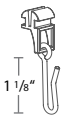
52004-25
Low Profile
Ball Bearing Carrier
\$1.30 ea.
\$1.08 ea./box of 1000



52110-25
CRS Carrier
UV-proof, synthetic material
\$0.40 ea.
\$0.34 ea./box of 500



2001-25
Klick Carrier
for pinch pleat
\$0.48 ea.
\$0.40 ea./box of 500



1 3/4" from
top of track
to bottom
of J hook.
2201-25
Klick Carrier
w/ Stainless Hook
Use with grommets
\$1.26 ea.
\$1.05 ea./box of 100



1 1/8"
52106-25
Contract Klick Carrier
w/ Stainless Hook
use with grommets
\$1.88 ea.
\$1.56 ea./box of 100



9001-25
J Hook, 1 1/8"
use with 52106
\$0.28 ea.
\$0.23 ea./box of 1,000



52005-25
Button Slide Carrier
\$0.20 ea.
\$0.17 ea./box of 1000

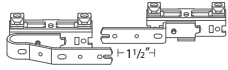


52105-25
Button Slide Carrier
w/ Hook
\$0.62 ea.
\$0.51 ea./box of 500

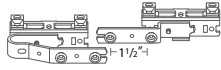


2202-25
Button Slide
w/ Breakaway Carrier
\$1.44 ea.
\$1.20 ea./bag of 5000

MTS Masters



52508-25 Overlap R
52509-25 Underlap L
Swivel Foot Multi-Functional Master
Use with bends and curves
\$11.00 ea.
\$9.17 ea./box of 100



52508-25A Overlap R
52509-25A Underlap L
Swivel Foot Multi-Functional Master
w/ snaps
\$13.04 ea.
\$10.87 ea./box of 100



52410-25 Butt R
52409-25 Butt L
Standard Butt Master
w/ snaps and for baton use
\$15.15 ea.
\$12.62 ea./box of 50



B8809-23-00 Overlap R
B8809-24-00 Underlap L
Plastic Snap Master
\$10.95 ea.
\$9.12 ea./box of 25

MTS Brackets



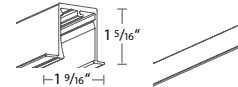
3800-25
MTS Wall Bracket
To install the rod inside a frame
\$11.00 ea.
\$9.17 ea./box of 100



3006-25
Suspension Bracket Tube & Top
\$106.04 ea. 10/box
3007-25
Suspension Bracket Insert Screw
39" extension
\$6.85 ea.
\$5.71 ea./box of 100



3008-25
Suspension Bracket Top
\$38.27 ea.
3009-25
Suspension Bracket
Klick System Clip
\$2.12 ea.
\$1.76 ea./box of 50



51723-25
Recess Profile, 23'
\$13.93/ft.
51724-25
Recess Profile Fixing Strip, 23'
\$2.93/ft.



53914-25
Recess Profile Wedge
\$4.10ea.
\$3.41 ea./box of 10



3001-25
Regular Duty Ceiling
\$1.10 ea.
\$0.91 ea./box of 100



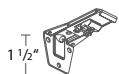
3002-25
Klick On Ceiling
with steel spring clip
for use with drop ceilings
\$1.36 ea.
\$1.13 ea./box of 100



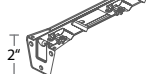
3003-25
Heavy Duty Ceiling
w/ Smart Klick
\$1.88 ea.
\$1.56 ea./box of 100



3901-25
Ceiling Splice/Bracket
\$1.88 ea.
\$1.56 ea./box of 50



53202-25
3" Smart Klick Wall Bracket
w/ wide base
adjusts 3"-4 1/2"
\$2.77 ea.
\$2.31 ea./box of 100



53206-25
6" Smart Klick Double Wall
Bracket w/ wide base
adjusts 2 1/2"-4" & 6"-7 1/2"
\$4.55 ea.
\$3.79 ea./box of 50



3280-25
3" Wall Bracket
heavy duty
projection 2 1/2"
\$10.33 ea.
\$8.61 ea./box of 20



3281-25
6" Double Wall Bracket
heavy duty
projection 1 1/2", 5 1/2"
\$14.81 ea.
\$12.34 ea./box of 15



3284-25
10" Triple Wall Bracket
heavy duty
proj 2", 6 5/8", 9 5/16"
\$27.47 ea.
\$22.89 ea./ box of 10

MTS Other Components



3801-25
MTS End Cap for Open End
\$5.43 ea.
\$4.53 ea./box of 200



3802-25
MTS End Cap for T-Connection
\$5.43 ea.
\$4.53 ea./box of 20



2305-25
Twist On End Stop
\$1.88 ea.
\$1.56 ea./box of 100



3803-25
MTS Track Connector
\$9.15 ea.
\$7.62 ea./box of 100

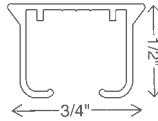


54110-25
36" Fiberglass Baton
w/ snap
\$6.56 ea.
\$5.47 ea./box of 100
See all batons p. 31
of Appendix

CS CL CM CCS SHUTTLE FMS FMS PLUS MTS **KS** CKS PS DS DSXL RBS CRS

KS® - Klick System

Aluminum extrusion, powder coated, lubricated for wall or ceiling mount. For light to medium weight draperies – residential and cubicle use. Available in -25 white, -59 black, -65 brown, -90 silver, and -95 beige. Additionally, many colors are available for special order at a minimum of 10,000 ft.



1013-25 white 13' 1" x 20 tracks/bundle = 262.46'
1016-25 white 16' 4" x 20 tracks/bundle = 328.08'
1019-25 white 19' 8" x 20 tracks/bundle = 393.70'
 \$3.30/ft.

1016-59 black 16' 4" x 20 tracks/bundle = 328.08'
1016-65 brown 16' 4" x 20 tracks/bundle = 328.08'
1016-90 silver 16' 4" x 20 tracks/bundle = 328.08'
1016-95 beige 16' 4" x 20 tracks/bundle = 328.08'
 \$3.63/ft.

BREAK PACK PRICING - Prices with this designation indicate a 20% up charge for broken pack quantities.

APPLICATION	PLEAT STYLE	STACKBACK	MOUNTING	MAX WEIGHT
Hand Draw	Ripplefold 5" per width		Wall	3 lbs/ft
One or Two Way	Pinch Pleat. 6" per width		Ceiling	
	Cubicle. 5" per width		Can be spliced	



Tracks KS

KS Carriers



2001-25
 -59 Black, -65 Brown,
 -90 Silver + 10%
 Klick Carrier
 for pinch pleat
 \$0.48 ea.
 \$0.40 ea./box of 500



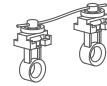
2002-25
 -59 Black, -65 Brown,
 -90 Silver + 10%
 Shirrtape Carrier
 \$0.45 ea.
 \$0.38 ea./box of 500



2003-25
 -59 Black + 10%
 Stop Carrier
 Klickable
 Prevents slide back
 \$0.87 ea.
 \$0.72 ea./box of 250



2004-25
 -59 Black + 10%
 Snap Carrier
 for accordiafold
 \$0.48 ea.
 \$0.40 ea./box of 500



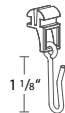
2114-25 60% fullness, 2 5/8" OC
2111-25 80% fullness, 2 3/8" OC
2112-25 100% fullness, 2 1/8" OC
2115-25 120% fullness, 1 7/8" OC
 -59 Black + 10%
 Two-Piece Connected Snap Carrier
 w/ Square Base
 In plastic sleeve. Use 4 1/4" snap tape.
 \$1.05 ea.
 \$0.87 ea./roll of 500



52003-25
 -65 Brown + 10%
 Economy Slide
 \$0.25 ea.
 \$0.21/box of 2000



52004-25
 Low Profile
 Ball Bearing Carrier
 \$1.30 ea.
 \$1.08/box of 1000



1 3/4" from
 top of track
 to bottom
 of J hook.
2201-25
 -59 Black, -65 Brown + 10%
 Klick Carrier
 w/ Stainless Hook
 Use with grommets
 \$1.26 ea.
 \$1.05/box of 100



52005-25
 Button Slide Carrier
 \$0.20 ea.
 \$0.17 ea./box of 1000



52105-25
 Button Slide Carrier
 w/ Hook
 \$0.62 ea.
 \$0.51 ea./box of 500

KS Masters



2525-25 Overlap R
2526-25 Underlap L
 -59 Black, -65 Brown + 10%
 Universal Low Profile Master
2527-25 Overlap L
2528-25 Underlap R
 \$10.95 ea.
 \$9.12 ea./box of 25



52410-25 Butt R
52409-25 Butt L
 -59 Black + 10%
 Standard Butt Master
 w/ snaps and for baton use
 \$15.15 ea.
 \$12.62 ea./box of 100



2540-25 Overlap R
2541-25 Underlap L
 Low Profile Snap Master
 for straight track only
 \$6.24 ea.
 \$5.20 ea./box of 100

KS Brackets



3001-25
 -59 Black, -65 Brown,
 -90 Silver + 10%
 Regular Duty Ceiling
 \$1.10 ea.
 \$0.91 ea./box of 100



3002-25
 Klick On Ceiling
 with steel spring clip
 for use with drop ceilings
 \$1.36 ea.
 \$1.13 ea./box of 100



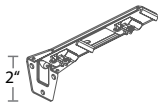
3003-25
 -59 Black, -65 Brown,
 -90 Silver + 10%
 Heavy Duty Ceiling
 w/ Smart Klick
 \$1.88 ea.
 \$1.56 ea./box of 100



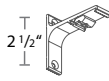
3901-25
 -59 Black, -65 Brown,
 -90 Silver + 10%
 Ceiling Splice/Bracket
 \$1.88 ea.
 \$1.56 ea./box of 50



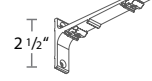
53202-25
 -59 Black, -65 Brown,
 -90 Silver + 10%
 3" Smart Klick Wall
 Bracket w/ wide base
 adjusts 3"-4 1/2"
 \$2.77 ea.
 \$2.31 ea./box of 100



53206-25
 -59 Black, -65 Brown,
 -90 Silver + 10%
 6" Smart Klick Double Wall
 Bracket w/ wide base
 adjusts 2 1/2"-4" & 6"-7 1/2"
 \$4.55 ea.
 \$3.79 ea./box of 50



3280-25
 -59 Black, -65 Brown,
 -90 Silver + 10%
 3" Wall for Wood Poles
 heavy duty
 projection 2 1/2"
 \$10.33 ea.
 \$8.61 ea./box of 20



3281-25
 -59 Black, -65 Brown + 10%
 6" Double Wall
 for Wood Poles
 heavy duty
 projection 1 1/2", 5 1/2"
 \$14.81 ea.
 \$12.34 ea./box of 15



3284-25
 -65 Brown, -90 Silver + 10%
 10" Triple Wall
 for Wood Poles
 heavy duty
 projection 2", 6 5/8", 9 5/16"
 \$27.47 ea.
 \$22.89 ea./box of 10

KS Other Components



2309-25
 -90 Silver + 10%
 End Stop Multifunctional
 \$1.06 ea.
 \$0.88 ea./box of 100



2304-65
 Twist End Stop with Cap
 \$1.30 ea.
 \$1.08 ea./box of 100



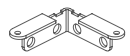
2306-59
 Twist End Stop with Cap
 \$2.15 ea.
 \$1.80 ea./box of 100



2305-25
 -59 Black, -65 Brown,
 -90 Silver + 10%
 Twist On End Stop
 \$1.88 ea.
 \$1.56 ea./box of 100



52307-90
 End Lock
 \$0.83 ea.
 \$0.69 ea./box of 100



2308-25
 Return Plate
 reversible, 2 1/2" return
 \$7.08 ea.
 \$5.90 ea./box of 100



3905-25
 -59 Black, -65 Brown,
 -90 Silver + 10%
 Track Connector and key **3904-00**
 \$8.54 ea.
 \$7.12 ea./box of 50

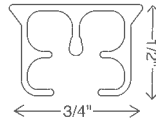


54110-25
 36" Fiberglass Baton
 w/ snap
 \$6.56 ea.
 \$5.47 ea./box of 100
 See all batons p. 31 of Appendix

CS CL CM CCS SHUTTLE FMS FMS PLUS MTS KS **CKS** PS DS DSXL RBS CRS

CKS® - Corded Klick System

Light to medium weight corded system. Aluminum extrusion, white, powder coated, lubricated system for wall or ceiling mount. Can be used with wood pole facia. Also in silver, -90.



1213-25	white	13' 1" x 20 tracks/bundle = 262.46'
1216-25	white	16' 4" x 20 tracks/bundle = 328.08'
1219-25	white	19' 8" x 20 tracks/bundle = 393.70'
		\$4.53/ft.
1216-90	silver	16' 4" x 20 tracks/bundle = 328.08'
		\$4.99/ft.

WARNING
All assembled corded products meet ANSI child safety standards and will come with a warning label.

BENDABLE
see page 30

BREAK PACK PRICING - Prices with this designation indicate a 20% up charge for broken pack quantities.

APPLICATION	PLEAT STYLE	STACKBACK	MOUNTING	MAX WEIGHT
Cord Draw	Ripplefold* 5" per width		Wall	3 lbs/ft
One or Two Way	Pinch Pleat 6" per width		Ceiling	Depending on application
Bead chain avail.	Accordiafold. 6" per width			

Tracks
CKS

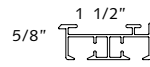
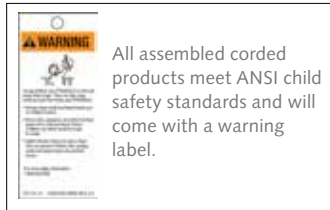
CKS Components

 2001-25 -90 Silver + 10% Klick Carrier for pinch pleat \$0.48 ea. \$0.40 ea./box of 500	 2004-25 Snap Carrier for accordiafold \$0.48 ea. \$0.40 ea./box of 500	 2114-25 60% fullness, 2 5/8" OC 2111-25 80% fullness, 2 3/8" OC 2112-25 100% fullness, 2 1/8" OC 2115-25 120% fullness, 1 7/8" OC Two-Piece Connected Snap Carrier w/ Square Base In plastic sleeve. Use 4 1/4" snap tape \$1.05 ea. or \$0.87 ea./roll of 500	 52003-25 Economy Slide \$0.25 ea. \$0.21/box of 2000	 2201-25 Klick Carrier w/ Stainless Hook Use with grommets \$1.26 ea. \$1.05/box of 100
 52005-25 Button Slide Carrier \$0.20 ea. \$0.17 ea./box of 1000	 52105-25 Button Slide Carrier w/ Hook \$0.62 ea. \$0.51 ea./box of 500	 2529-25 Overlap R 2530-25 Underlap L -90 Silver + 10% CKS Master Carrier \$19.20 ea. \$16.00 ea./box of 25	 3001-25 -90 Silver + 10% Regular Duty Ceiling \$1.10 ea. \$0.91 ea./box of 100	 3002-25 Klick On Ceiling with steel spring clip for use with drop ceilings \$1.36 ea. \$1.13 ea./box of 100
 3003-25 -90 Silver + 10% Heavy Duty Ceiling w/ Smart Klick \$1.88 ea. \$1.56 ea./box of 100	 3901-25 -90 Silver + 10% Ceiling Splice/Bracket \$1.88 ea. \$1.56 ea./box of 50	 53202-25 -90 Silver + 10% 3" Smart Klick Wall Bracket w/ wide base adjusts 3"-4.5" \$2.77 ea. \$2.31 ea./box of 100	 53206-25 -90 Silver + 10% 6" Smart Klick Double Wall Bracket w/ wide base adjusts 2.5"-4" & 6-7.5" \$4.55 ea. \$3.79 ea./box of 50	 3280-25 -90 Silver + 10% 3" Wall for Wood Poles heavy duty projection 2.5" \$10.33 ea. \$8.61 ea./box of 20
 3281-25 -90 Silver + 10% 6" Double Wall for Wood Poles heavy duty projection 1.5", 5.5" \$14.81 ea. \$12.34 ea./box of 15	 3284-25 -90 Silver + 10% 10" Triple Wall for Wood Poles, heavy duty projection 2", 6.5", 9.25" \$27.47 ea. \$22.89 ea./box of 10	 3905-25 -90 Silver + 10% Track Connector and key 3904-00 \$8.54 ea. \$7.12 ea./box of 50	 2804-25 End Pulley 2 1/4", reversible \$10.95 ea. \$9.12 ea./box of 25	 2305-25 -90 Silver + 10% Twist On End Stop \$1.88 ea. \$1.56 ea./box of 100
 2805-25 Cord Connector \$1.99 ea. \$1.66 ea./box of 100	 9004-25 3.2mm Cord 273.4 yds./roll \$1.74/yd. \$1.45/yd. for 273.4 yards	 49500-00 Tension Device, child safety \$7.31 ea. \$6.09 ea./box of 250		

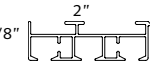


PS® - Panel System

A stylish alternative to vertical blinds that uses flat panels of fabric. Aluminum extrusion, white, powder coated, wall and ceiling mount.



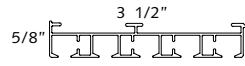
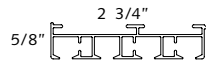
31219-25 2 channel 19' x 5 tracks p/bundle = 95' \$5.40/ft.



31319-25 3 channel 19' x 5 tracks p/bundle = 95' \$6.78/ft.

31419-25 4 channel 19' x 5 tracks p/bundle = 95' \$9.09/ft.

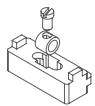
31519-25 5 channel 19' x 5 tracks p/bundle = 95' \$10.86/ft.



BREAK PACK PRICING - Prices with this designation indicate a 20% up charge for broken pack quantities.

APPLICATION	MOUNTING	MAX WEIGHT
Hand Draw	Wall	10 lbs./panel
Cord Draw	Ceiling	depending on application
One or Two Way		

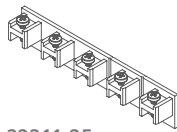
PS Components



32006-25
Cord Connector
\$1.11 ea.
\$0.92 ea./box of 500



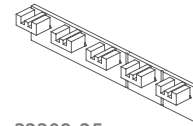
32310-25
2-Channel End Cap
Requires end cap cover
\$0.89 ea.
\$0.75 ea./box of 500



32311-25
3, 4 & 5-Channel End Cap
Requires end cap cover
\$1.45 ea.
\$1.21 ea./box of 300



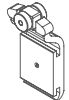
32312-25
2-Channel Cover
for End Cap & Pulley
\$0.53 ea.
\$0.44 ea./box of 600



32309-25
3, 4 & 5-Channel Cover
for End Cap & Pulley
\$0.92 ea.
\$0.77 ea./box of 600



31116-25
Velcro Profile w/
Hook Tape, 13.1'
\$4.02/ft.
\$3.35/ft. for bundle of 20



32007-25
Wheeled Carrier
connects profile to track
\$1.20 ea.
\$1.00 ea./box of 500



32510-25
Baton Adaptor
use on leading panel
\$1.11 ea.
\$0.92 ea./box of 500



33202-25
Catcher, T-Angle
for all but stationary panel
\$0.53 ea.
\$0.44 ea./box of 500



33203-25
Stopper, A-Angle
for all but lead panel
\$0.53 ea.
\$0.44 ea./box of 500



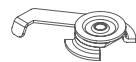
33204-25
L End Stop
for stationary panel
\$0.53 ea.
\$0.44 ea./box of 500



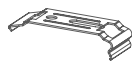
33209-25
Reverse L Stop
for lead panel
\$0.53 ea.
\$0.44 ea./box of 500



32308-25
Stationary Set Screw
locks side panel in place
\$0.45 ea.
\$0.38 ea./box of 500



33003-25
Swivel Ceiling Bracket
for 2, 3 & 4 channel
tracks
\$0.92 ea.
\$0.77 ea./box of 200



Click On Ceiling Bracket/
Splice
33002-25 2-4 Channel
\$1.16 ea.
\$0.97 ea./box of 200
33004-25 5 Channel
\$1.76 ea.
\$1.47 ea./box of 200



Wall Bracket
33005-25
2, 3 & 4 Channel
\$2.81 ea.
\$2.34 ea./box of 200
33006-25 5 Channel
\$3.44 ea.
\$2.87 ea./box of 200



49005-25
Counterweight, 19'
aluminum 1" x 1/8"
\$2.13/ft.
\$1.70/ft. for bundle
of 20



39004-25
3.0mm Traversing Cord
546.8 yds./roll
\$0.45/yd.
\$0.38/yd. for 546.8 yards



49500-00
Tension Device
for child safety
\$7.31 ea.
\$6.09 ea./box of 250



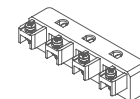
39007-25
Velcro Tape
27 yds. per roll
\$23.76/roll



39090-25
Valance Bracket
Does not fit 5-channel
\$2.56 ea.
\$2.13 ea./box of 50



49091-25
Valance Corners
To connect profile
returns
\$3.69 ea.
\$3.08 ea./box of 500



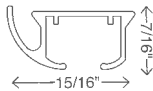
End Pulley for Cord
requires end cap cover
32002-25 2 Channel, \$1.22 ea. or \$1.02/bag of 250
32003-25 3 Channel, \$1.37 ea. or \$1.14/bag of 250
32004-25 4 Channel, \$1.52 ea. or \$1.27/bag of 250
32005-25 5 Channel, \$2.03 ea. or \$1.69/bag of 250

CS CL CM CCS SHUTTLE FMS FMS PLUS MTS KS CKS PS **DS** DSXL RBS CRS



DS® - Design System

Elegant hand draw system for all types of medium weight draperies.
Aluminum extrusion, white, powder coated, lubricated for wall and ceiling mount.



1116-25 white 16' 4" x 20 tracks/bundle = 326.7'
\$5.17/ft.

BREAK PACK PRICING - Prices with this designation indicate a 20% up charge for broken pack quantities.

APPLICATION	PLEAT STYLE	STACKBACK	MOUNTING	MAX WEIGHT
Hand Draw	Ripplefold6" per width		Wall	3 lbs/ft
One or Two Way	Pinch Pleat.7" per width		Ceiling	Depending on application
	Cubicle.5" per width		Can be spliced	
	Accordiafold.5" per width			

DS Components



2001-25
Klick Carrier for PP
\$0.48 ea.
\$0.40 ea./box of 500
2201-25
Klick Carrier w/ Hook
\$1.26 ea.
\$1.05/box of 100



2002-25
Shirrtape Carrier
\$0.45 ea.
\$0.38 ea./box of 500



2003-25
Stop Carrier
Klickable
Prevents slide back
\$0.87 ea.
\$0.72 ea./box of 250



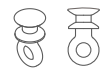
2004-25
Snap Carrier
for accordiafold
\$0.48 ea.
\$0.40 ea./box of 500



2114-25 60% fullness, 2 5/8" OC
2111-25 80% fullness, 2 3/8" OC
2112-25 100% fullness, 2 1/8" OC
2115-25 120% fullness, 1 7/8" OC
Two-Piece Connected Snap Carrier w/ Square Base
In plastic sleeve. Use 4 1/4" snap tape.
\$1.05 ea.
\$0.87 ea./roll of 500



52003-25
Economy Slide
\$0.25 ea.
\$0.21/box of 2000



52005-25
Button Slide Carrier
\$0.20 ea.
\$0.17 ea./box of 1000



52105-25
Button Slide Carrier
w/ Hook
\$0.62 ea.
\$0.51 ea./box of 500



2525-25 Overlap R
2526-25 Underlap L
2527-25 Overlap L
2528-25 Underlap R
Universal Low Profile
\$10.95 ea.
\$9.12 ea./box of 25



2540-25 Overlap R
2541-25 Underlap L
Low Profile Snap Master
for straight track only
\$6.24 ea.
\$5.20 ea./box of 100



B8809-23-00 Overlap R
B8809-24-00 Underlap L
Plastic Snap Master
\$10.95 ea.
\$9.12 ea./box of 25



52410-25 Butt R
52409-25 Butt L
Standard Butt Master
w/ snaps
for use with baton
\$15.15 ea.
\$12.62 ea./box of 100



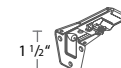
3001-25
Regular Duty Ceiling
\$1.10 ea.
\$0.91 ea./box of 100



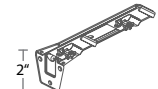
3002-25
Klick On Ceiling
with steel spring clip
for use with drop ceilings
\$1.36 ea.
\$1.13 ea./box of 100



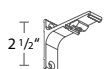
3003-25
Heavy Duty Ceiling
w/ Smart Klick
\$1.88 ea.
\$1.56 ea./box of 100



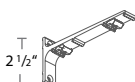
53202-25
3" Smart Klick
Wall Bracket w/ wide base
adjusts 3"-4 1/2"
\$2.77 ea.
\$2.31 ea./box of 100



53206-25
6" Smart Klick Double
Wall Bracket w/ wide base
adjusts 2 1/2-4" & 6-7 1/2"
\$4.55 ea.
\$3.79 ea./box of 50



3280-25
3" Wall Bracket
heavy duty
projection 2 1/2"
\$10.33 ea.
\$8.61 ea./box of 20



3281-25
6" Double Wall Bracket
heavy duty
projection 1 1/2", 5 1/2"
\$14.81 ea.
\$12.34 ea./box of 15



3284-25
10" Triple Wall Bracket
heavy duty
projection 2", 6 5/8",
9 5/16"
\$27.47 ea.
\$22.89 ea./box of 10



2305-25
Twist On End Stop
\$1.88 ea.
\$1.56 ea./box of 100



2310-25
DS End Cap w/ screw
\$1.80 ea.
\$1.50 ea./box of 10

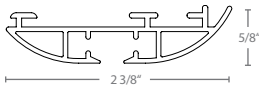


54110-25
36" Fiberglass Baton
w/ snap
\$6.56 ea.
\$5.47 ea./box of 100
See all batons p. 31
of Appendix



DSXL® - Design System XL

An elegantly shaped track. Use as a standard hand draw system with ripplefold or pinch pleat carriers. The Castellanos Drapery Easy Flex System is a good match allowing for easily adjusted fold depth. Install the DSXL track without any visible brackets - works with both Klick brackets and swivel brackets.



2119-25 white 19' 8" x 20 tracks/bundle = 393.7'
\$10.97/ft.

BREAK PACK PRICING - Prices with this designation indicate a 20% up charge for broken pack quantities.

APPLICATION	PLEAT STYLE	STACKBACK	MOUNTING	MAX WEIGHT
Hand Draw	Ripplefold	6" per width	Wall	3 lbs/ft
One or Two Way	Pinch Pleat	7" per width	Ceiling	Depending on application
	Cubicle	5" per width		
	Accordiafold	5" per width		

DSXL Components



2001-25
Klick Carrier for PP
\$0.48 ea.
\$0.40 ea./box of 500
2201-25
Klick Carrier w/ Hook
\$1.26 ea.
\$1.05/box of 100



2002-25
Shirrtape Carrier
\$0.45 ea.
\$0.38 ea./box of 500



2003-25
Stop Carrier
Klickable
Prevents slide back
\$0.87 ea.
\$0.72 ea./box of 250



2004-25
Snap Carrier
for accordiafold
\$0.48 ea.
\$0.40 ea./box of 500



2114-25 60% fullness, 2 5/8" OC
2111-25 80% fullness, 2 3/8" OC
2112-25 100% fullness, 2 1/8" OC
2115-25 120% fullness, 1 7/8" OC
Two-Piece Connected Snap Carrier w/ Square Base
In plastic sleeve. Use 4 1/4" snap tape.
\$1.05 ea.
\$0.87 ea./roll of 500



52003-25
Economy Slide
\$0.25 ea.
\$0.21/box of 2000



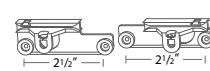
52005-25
Button Slide Carrier
\$0.20 ea.
\$0.17 ea./box of 1000



52105-25
Button Slide Carrier
w/ Hook
\$0.62 ea.
\$0.51 ea./box of 500



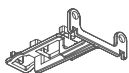
2525-25 Overlap R
2526-25 Underlap L
2527-25 Overlap L
2528-25 Underlap R
Universal Low Profile
Master
\$10.95 ea.
\$9.12 ea./box of 25



2540-25 Overlap R
2541-25 Underlap L
Low Profile Snap Master
for straight track only
\$6.24 ea.
\$5.20 ea./box of 100



B8809-23-00 Overlap R
B8809-24-00 Underlap L
Plastic Snap Master
\$10.95 ea.
\$9.12 ea./box of 25



9040-25 Overlap R/L
FES Master
\$4.41 ea.
\$3.68/box of 25



2300-25
Klick On Ceiling Bracket
\$1.16 ea.
\$0.97/box of 200



2301-25
Wall Bracket w/ Swivel
\$51.90 ea.
\$43.25/box of 5



2400-25
DSXL End Cap
\$2.05 ea.
\$1.71/box of 20

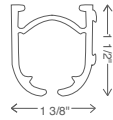


54110-25
36" Fiberglass Baton
w/ snap
\$6.56 ea.
\$5.47 ea./box of 100
See all batons p. 31
of Appendix

CS CL CM CCS SHUTTLE FMS FMS PLUS MTS KS CKS PS DS DSXL **RBS** CRS

RBS® - Roman Blind System

Most durable and functional roman blind hardware on the market.
White aluminum extrusion, powder coated. Wall or ceiling mount. Integrated velcro tape.



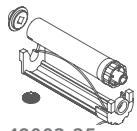
41019-25 white 19' x 10 tracks/bundle = 190'
\$6.51/ft.

BREAK PACK PRICING - Prices with this designation indicate a 20% up charge for broken pack quantities.

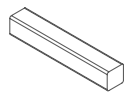


APPLICATION	SHADE STYLE	MOUNTING	MAX WEIGHT
Chain Operated	Roman, Balloon, etc.	Wall Ceiling Cannot be spliced	1:4 gear up to 18 lbs. 1:2 gear up to 14 lbs. 1:1 gear up to 10 lbs.

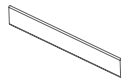
RBS Components



49003-25
Cord Roll Support w/ Cord
12' drop length
\$4.67 ea.
\$3.90 ea./box of 100



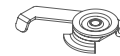
41119-90
19' Rod
aluminum 3/16" x 3/16"
\$2.30/ft.
\$1.92/ft. for bundle of 5



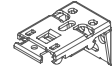
49005-25
Counterweight, 19'
aluminum 1" x 1/8"
\$2.13/ft.
\$1.70/ft. for bundle of 20



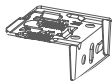
43202-25
Swivel Wall Bracket
\$1.95 ea.
\$1.63 ea./box of 100



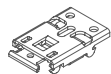
43003-25
Swivel Ceiling Bracket
\$2.21 ea.
\$1.84 ea./box of 100



43033-25
Klick Wall Bracket
\$2.21 ea.
\$1.84 ea./box of 200



43034-25
Hidden Klick Multi Bracket
\$2.21 ea.
\$1.8 ea. 4/box of 100



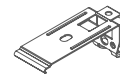
43004-25
Klick Ceiling Bracket
\$2.21 ea.
\$1.84 ea./box of 100



49008-25
Shade Leveler
\$0.48 ea.
\$0.40 ea./box of 1000



31116-25
Velcro Profile w/
Hook Tape, 13.1'
\$4.02/ft.
\$3.35/ft. for bundle of 20



49090-25
Valance Bracket
attaches to velcro profile
\$2.53 ea.
\$2.11 ea./box of 50



49091-25
Valance Corners
\$3.69 ea.
\$3.08 ea./box of 250



39007-25
Velcro Tape
27 yds. per roll
\$23.76/roll



49006-25
Fiberglass Spines, 19'
3/16" diameter
\$0.45/ft.
\$0.38/ft. for bundle of 250



49014-25
Plastic Snap Ring
\$0.10 ea.
\$0.08 ea./box of 5000



49013-25
Plastic Ring Cord Guide
\$0.10 ea.
\$0.08 ea./box of 5000



49400-25
Shroud
73 yds. per roll
\$209.95/roll



49500-00
Tension Device
for child safety
\$7.31 ea.
\$6.09 ea./box of 100



Endless Chain, white
-95 Beige, -99 Ivory +10%
Drop lengths available:
49020-25 29" \$1.91 ea
49021-25 39" \$2.22 ea
49022-25 49" \$2.74 ea

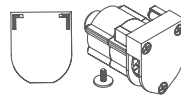
49023-25 59" \$3.05 ea
49024-25 69" \$3.21 ea
49025-25 79" \$3.30 ea
49026-25 89" \$3.42 ea
49027-25 99" \$3.70 ea
100 pcs/bag



49126-25
Metal Ball Chain
500 ft. per roll
\$355.00/roll



76047-90
Metal Ball Chain Stopper
\$0.48 ea.



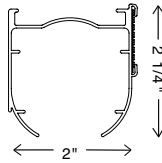
Control Unit w/ End
Cap & Retaining Ring
heavy duty, self-braking
42311-25
1:4 gear to 18 lbs.

42312-25
1:2 gear to 14 lbs.
42310-25
1:1 gear to 10 lbs.
\$14.50 ea.
\$12.09/box of 100



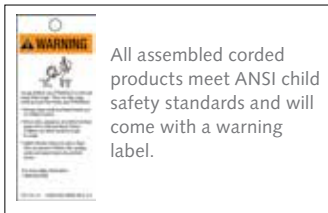
RBS® XL - Roman Blind System

White aluminum extrusion, powder coated. Wall or ceiling mount. Integrated velcro tape. 1:4 gear holds up to 24 lbs.



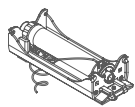
44019-25 white 19' x 10 tracks/bundle = 190'
\$9.60/ft.

BREAK PACK PRICING - Prices with this designation indicate a 20% up charge for broken pack quantities.

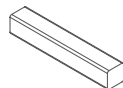


APPLICATION	SHADE STYLE	MOUNTING	MAX WEIGHT
Chain Operated	Roman, Balloon, etc.	Wall Ceiling Cannot be spliced	1:4 gear up to 24 lbs.

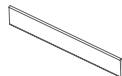
RBS XL Components



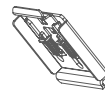
44003-25
RBS XL Cord Roll Support
\$7.06 ea.
\$5.88 ea./box of 100



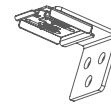
41119-90
19' Rod
aluminum 3/16" x 3/16"
\$2.30/ft.
\$1.92/ft. for bundle of 5



49005-25
Counterweight, 19'
aluminum 1" x 1/8"
\$2.13/ft.
\$1.70/ft. for bundle of 20



44004-90
RBS XL Ceiling Bracket
nickel plated
\$3.21 ea.
\$2.68 ea./box of 1000



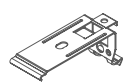
44033-90
RBS XL Wall Bracket
nickel plated
\$8.39 ea.
\$6.99 ea./box of 100



31116-25
Velcro Profile w/
Hook Tape, 13.1'
\$4.02/ft.
\$3.35/ft. for bundle of 20



49008-25
Shade Leveler
\$0.48 ea.
\$0.40 ea./box of 1000



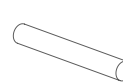
49090-25
Valance Bracket
attaches to velcro profile
\$2.53 ea.
\$2.11 ea./box of 50



49091-25
Valance Corners
\$3.69 ea.
\$3.08 ea./box of 250



39007-25
Velcro Tape
27 yds. per roll
\$23.76/roll



49006-25
Fiberglass Spines, 19'
3/16" diameter
\$0.45/ft.
\$0.38/ft. for bundle 250



49014-25
Plastic Snap Ring
\$0.10 ea.
\$0.08 ea./box of 5000



49013-25
Plastic Ring Cord Guide
\$0.10 ea.
\$0.08 ea./box of 5000



49400-25
Shroud
73 yds. per roll
\$209.95/roll

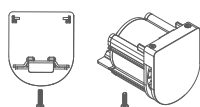


49500-00
Tension Device
for child safety
\$7.31 ea.
\$6.09 ea./box of 100



Endless Chain, white
-95 Beige, -99 Ivory +10%
Drop lengths available:
49020-25 29" \$1.91 ea
49021-25 39" \$2.22 ea
49022-25 49" \$2.74 ea

49023-25 59" \$3.05 ea
49024-25 69" \$3.21 ea
49025-25 79" \$3.30 ea
49026-25 89" \$3.42 ea
49027-25 99" \$3.70 ea
100 pcs/bag



44311-25
RBS XL Control Unit w/ End
Cap & Screw
1:4 gear to 24 lbs.
\$20.17 ea.
\$16.81 ea./box of 100

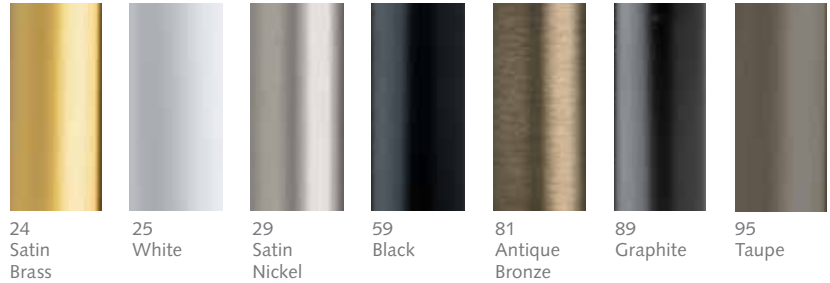
Deventer CRS® Traversing Collection

1 1/8" Light Duty H-Rail

Recommended weight is 3 lbs/ft. depending on application.



Available Finishes XX = finish color



ASSEMBLED PRICING includes rail, end cap finial, carriers, end stop, masters, brackets and 36" fiberglass baton (see all batons p. 31 of Appendix). Indicate pinch pleat or Ripplefold.

\$492.66 for the first 4 feet, \$61.01/additional foot. Freight is additional.

Double sets are available. Please call sales for a quote, 866-823-3894.

Bracket Count:

Up to 60" = 2 brackets 121-180" = 4 brackets
61-120" = 3 brackets 181-240" = 5 brackets

BREAK PACK PRICING - Components with this designation will have a 20% up charge for broken pack quantities.

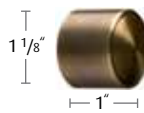


Traversing DECORATIVE METAL

1 1/8" Deventer CRS Brackets



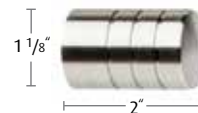
51419-XX
1 1/8" Aluminum CRS Rail, 19"
\$13.71/ft



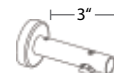
52430-XX
CRS End Cap Finial
\$34.36 ea. 10/box



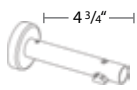
52431-XX
CRS Ball Finial
\$72.02 ea. 10/box



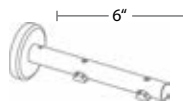
52432-XX
CRS Notched Finial
\$39.67 ea. 10/box



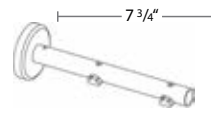
53401-XX
Single Bracket
3" P
\$49.65 ea. 2/box



53402-XX
Extended Single Bracket
4 3/4" P
\$65.37 ea. 2/box



53406-XX
Double Bracket
6" P
Do not use with Ripplefold
\$93.82 ea. 2/box



53407-XX
Extended Double Bracket
7 3/4" P
Use with Ripplefold
\$105.08 ea. 2/box



53412-XX
Inside Mount Bracket
\$78.52 ea. 2/box

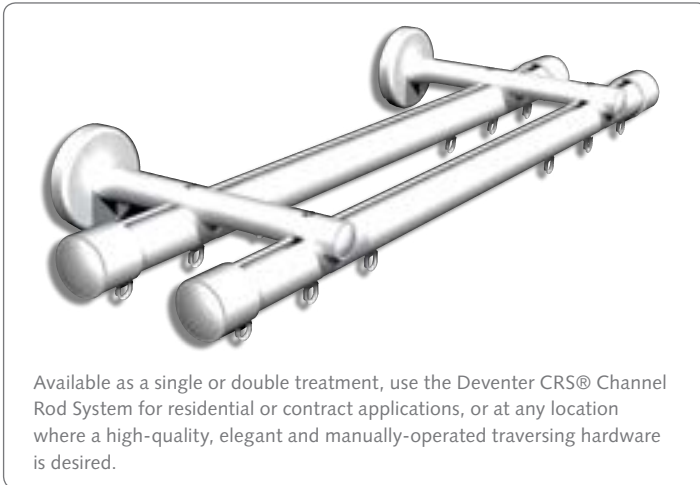


53408-90
Flush Ceiling Bracket
aluminum
\$22.89 ea. 100/box

Deventer CRS® Traversing Collection

1 1/8" Light Duty H-Rail

Recommended weight is 3 lbs/ft. depending on application.



Available as a single or double treatment, use the Deventer CRS® Channel Rod System for residential or contract applications, or at any location where a high-quality, elegant and manually-operated traversing hardware is desired.



29 Satin Brass CRS Rail with Ball Finial



29 Satin Nickel CRS Rail with Notched Finial



59 Black CRS Rail with Ball Finial



81 Antique Bronze CRS Rail with End Cap Finial

Traversing
DECORATIVE METAL

1 1/8" Deventer CRS Carriers, Masters and Other Components



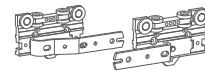
52110-25
CRS Carrier
UV-proof, synthetic material
\$0.40 ea.
\$0.34 ea./box of 500



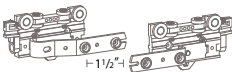
52002-25
-59 Black, -65 Brown + 10%
Slim Line Ball Bearing Carrier
\$0.58 ea.
\$0.48 ea./box of 1000



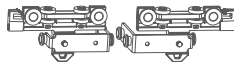
2107-25 60% fullness, 2 5/8" OC
2106-25 80% fullness, 2 3/8" OC
2105-25 100% fullness, 2 1/8" OC
2108-25 120% fullness, 1 7/8" OC
-59 Black + 10%
Wheeled Connected Snap Carrier
in plastic sleeve
\$1.30 ea.
\$1.08 ea./box of 1000



52502-25 Overlap R
52504-25 Underlap L
-59 Black + 10%
Standard Multi-Functional Master
Use stiffener w/ exposed baton
or hooks w/ hidden baton
\$6.24 ea.
\$5.20 ea./box of 100



52502-25A Overlap R
52504-25A Underlap L
-59A Black + 10%
Standard Multi-Functional
Master w/ snaps
\$7.56 ea.
\$6.30 ea./box of 100



52411-25A Butt R
52412-25A Butt L
Wheeled Butt Master
w/snap adaptor
Designed for hidden baton
\$26.75 ea.
\$22.29 ea./box of 50



52420-25
Metal End Stop w/ Screw
For attaching one
carrier as end stop
\$12.56 ea. 100/box



53413-90
Rail Connector
aluminum, 3"
\$16.84 ea. 25/box



2551-25
Small Extension Arm
\$3.71 ea.
\$3.09 ea./box of 50

Custom Bending & Curving



Bend & Curve these Tracks and Rails – Actual size template is required.



CS – pages 3-4



CCS – pages 9-10



FMS – pages 13-14



KS – pages 19-20



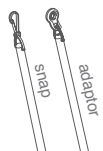
CKS – page 21



CRS – page 27-28

Batons

Acrylic & Fiberglass Batons and Components



3/8" Fiberglass Baton
Must order screw separately

36"
54110-25 White w/ snap
54310-25 White w/ adaptor
\$6.56 ea. or \$5.47 ea./box 100

54110-59 Black w/ snap
54110-90 Silver w/ snap
\$11.47 ea. or \$9.56 ea./box 100

48"
54111-25 White w/ snap
54311-25 White w/ adaptor
\$8.72 ea. or \$7.27 ea./box 100

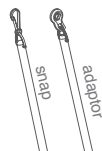
54111-59 Black w/ snap
54111-90 Silver w/ snap
\$13.67 ea. or \$11.39 ea./box 100

60"
54112-25 White w/ snap
54312-25 White w/ adaptor
\$13.70 ea. or \$11.41 ea./box 100

54112-59 Black w/ snap
54312-90 Silver w/ snap
\$17.92 ea. or \$14.93 ea./box 100

72"
54113-25 White w/ snap
54313-25 White w/ adaptor
\$15.84 ea. or \$13.20 ea./box 100

54113-59 Black w/ snap
54313-90 Silver w/ snap
\$20.80 ea. or \$17.34 ea./box 100



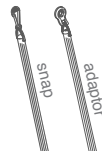
1/2" Acrylic Baton
Must order screw separately

54510-00 36" w/ snap
54710-00 36" w/ adaptor
\$9.39 ea.
\$7.82 ea./box of 100

54511-00 48" w/ snap
54711-00 48" w/ adaptor
\$18.36 ea.
\$15.30 ea./box of 100

54512-00 60" w/ snap
54712-00 60" w/ adaptor
\$20.58 ea.
\$17.15 ea./box of 100

54513-00 72" w/ snap
54713-00 72" w/ adaptor
\$27.47 ea.
\$22.89 ea./box of 100



1/2" Acrylic Fluted Baton

54610-00 36" w/ snap
54810-00 36" w/ adaptor
\$9.39 ea.
\$7.82 ea./box of 100

54611-00 48" w/ snap
54811-00 48" w/ adaptor
\$18.36 ea.
\$15.30 ea./box of 100

54612-00 60" w/ snap
54812-00 60" w/ adaptor
\$20.58 ea.
\$17.15 ea./box of 100

54613-00 72" w/ snap
54813-00 72" w/ adaptor
\$27.47 ea.
\$22.89 ea./box of 100



ADA Acrylic Baton

54911-00 48" w/ adaptor
\$48.84 ea.
\$40.70 ea./box of 20

54912-00 60" w/ adaptor
\$56.55 ea.
\$47.12 ea./box of 20



9013-00
Baton Holder
clear acrylic
\$1.74 ea.



54001-16
Baton Snap
\$0.29 ea.



9015-00
Hex Head
Shoulder Screw
for baton w/ adaptor
\$0.32 ea.



54000-16
D-Ring
\$0.56 ea.

BREAK PACK PRICING

Components with this designation will have a 20% up charge for broken pack quantities.

Workroom Components



9009-00
Large Stiffener w/ grommet
Adjustable for ceiling or wall
\$1.00 ea.
\$0.83 ea./bag of 500



9011-00
Small Stiffener w/ grommet
For sheers
\$0.83 ea.
\$0.69 ea./bag 1000



9003-25
1" Snap Tape for Ripplefold*
4 1/4" OC spacing
\$4.51/yd.
\$3.76/yd. for 100 yard roll



9006-25
Snap Tape for accordiafold
7 1/2" OC spacing
\$3.58/yd.
\$2.98/yd. for 100 yard roll



9007-25
Snap Tape for accordiafold
8 1/2" OC spacing
\$3.58/yd.
\$2.98/yd. for 100 yard roll



9008-25
Snap Tape
for accordiafold
10" OC spacing
\$3.58/yd.
\$2.98/yd. for 100 yard roll



5302-00
2' KS, \$23.52 ea.
5303-00
10' KS, \$82.69 ea.



5309-00
2' CKS, \$25.28 ea.
5310-00
10' CKS, \$83.82 ea.



55302-00
4' CS, \$115.62 ea.



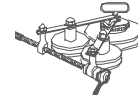
55303-00
4' CCS, \$115.62 ea.



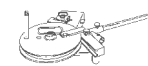
55306-00
2' FMS, \$52.64 ea.
55307-00
23' FMS, \$201.37 ea.



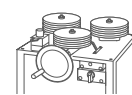
5002-00
Compact Bending Tool
For 90°/45°/Bays
KS & CKS only
Includes 2' filler strip
\$1,355.20 ea.



5003-00
Continuous Curver
For arches, bows, circles, etc.
Includes 10' filler strip
for KS & CKS only
Use w/ 5002-00
\$949.71 ea.



55001-00
Contract Bending Tool
Includes 8" radius wheel
\$5,608.81 ea.
55301-00
6" Bending Wheel
\$661.63 ea.



5004-00
Electronic Continuous
Curver
110 volt curver for
accurate & high
output curving
\$17,408.12 ea.



5304-00 KS
5305-00 CS/CCS/FS
5306-00 DS
55313-00 CRS
Bending Wheels
Not for use with CM
\$1,585.98 ea. KS
\$1,693.99 ea. CS/CCS/FS
\$1,277.62 ea. DS



9031-00
Microtach Gun
Locks side panels in place
\$156.41 ea. 1/box



9032-00
Microtach Needles
\$145.99 ea. 4/box



9033-00
Microtach Pins
\$182.49/box of 10,000

BREAK PACK PRICING - Components with this designation will have a 20% up charge for broken pack quantities.



FES® - Easyflex System

Fold depth is fully customizable with Easyflex tape and carriers. Ceiling space required is equal to the spacing between the hook placement in the Easyflex tape. Fits all Tracks.



Wheeled Connected Snap
Carrier in plastic sleeve
2107-25 60%, 2 5/8" OC
2106-25 80%, 2 3/8" OC
2105-25 100%, 2 1/8" OC
2108-25 120%, 1 7/8" OC
\$1.30 ea.
\$1.08 ea./box of 500



Two-Piece Connected
Snap w/ Square Base
in plastic sleeve
2114-25 60%, 2 5/8" OC
2111-25 80%, 2 3/8" OC
2112-25 100%, 2 1/8" OC
2115-25 120%, 1 7/8" OC
\$1.05 ea.
\$0.87 ea./box of 500



52410-25 Butt R
52409-25 Butt L
Standard Butt Master
w/ snaps, for baton use
\$15.15 ea.
\$12.62 ea./box of 50



B8809-23-00 Overlap R
B8809-24-00 Underlap L
Plastic Snap Master
\$10.95 ea.
\$9.12 ea./box of 25



9037-25
Easyflex Hook
\$0.47 ea.
\$0.39 ea./box 500



9039-25
Easyflex End Hook
\$0.24 ea.
\$0.20 ea./box 1000



9036-00
Easyflex Tape
3" wide, 9/16" spacing
\$3.71 yd.
\$3.09 yd./roll 100 yds



9040-25 Overlap R/L
FES Master
\$4.41 ea.
\$3.68 ea./box of 25

Ripplefold® Carrier Count Charts

For Overlap Masters

No. of Full Spaces Required	Fabric Width Hemmed	Panel Coverage 120% Fullness	Panel Coverage 100% Fullness	Panel Coverage 80% Fullness	Panel Coverage 60% Fullness	* No. of Carriers
7	35 1/2	11-14	12-16	14-17	14-19	8
9	44	15-18	17-20	18-22	20-24	10
11	52 1/2	19-21	21-24	23-27	25-30	12
13	61	22-25	25-28	28-32	31-35	14
15	69 1/2	26-29	29-32	33-36	36-40	16
17	78	30-33	33-37	37-41	41-45	18
19	86 1/2	34-36	38-41	42-46	46-51	20
21	95	37-40	42-45	47-51	52-56	22
23	103 1/2	41-44	46-50	52-55	57-61	24
25	112	45-48	51-54	56-60	62-66	26
27	120 1/2	49-51	55-58	61-65	67-72	28
29	129	52-55	59-62	66-70	73-77	30
31	137 1/2	56-59	63-66	71-74	78-82	32
33	146	60-63	67-71	75-79	83-87	34
35	154 1/2	64-66	72-75	80-84	88-93	36
37	163	67-70	76-79	85-89	94-98	38
39	171 1/2	71-74	80-84	90-93	99-103	40
41	180	75-78	85-88	94-98	104-108	42
43	188 1/2	79-81	89-92	99-103	109-114	44
45	197	82-85	93-96	104-108	115-119	46
47	205 1/2	86-89	97-101	109-112	120-124	48
49	214	90-93	102-105	113-117	125-129	50
51	222 1/2	94-96	106-109	118-122	130-135	52
53	231	97-100	110-113	123-127	136-140	54
55	239 1/2	101-104	114-118	128-131	141-145	56

No. of Full Spaces Required	Fabric Width Hemmed	Panel Coverage 120% Fullness	Panel Coverage 100% Fullness	Panel Coverage 80% Fullness	Panel Coverage 60% Fullness	* No. of Carriers
57	248	105-108	119-122	132-136	146-150	58
59	256 1/2	109-111	123-126	137-141	151-156	60
61	265	112-115	127-130	142-146	157-161	62
63	273 1/2	116-119	131-136	147-150	162-166	64
65	282	120-123	137-139	151-155	167-171	66
67	290 1/2	124-126	140-143	156-160	172-176	68
69	299	127-130	144-147	161-165	177-182	70
71	307 1/2	131-134	148-152	166-169	183-187	72
73	316	135-138	153-156	170-174	188-192	74
75	324 1/2	139-141	157-160	175-179		76
77	333	142-145	161-164	180-184		78
79	341 1/2	146-149	165-168	185-188		80
81	350	150-153	169-173	189-193		82
83	358 1/2	154-156	174-177			84
85	367	157-160	178-181			86
87	375 1/2	161-164	182-186			88
89	384	165-168	187-190			90
91	392 1/2	169-171				92
93	401	172-175				94
95	409 1/2	176-179				96
97	418	180-183				98
99	426 1/2	184-186				100
101	435	187-190				102

* Includes one carrier (button position only) for attachment to master.
Ripplefold is a trademark of Kirsch.

Ripplefold® Carrier Count Charts

For Butt Masters

No. of Full Spaces Required	Fabric Width Hemmed	Panel Coverage 120% Fullness	Panel Coverage 100% Fullness	Panel Coverage 80% Fullness	Panel Coverage 60% Fullness	* No. of Carriers
7	34	13-13	13-14	13-16	16-18	8
9	42 1/2	14-16	15-19	17-21	19-23	10
11	51	17-20	20-23	22-26	24-28	12
13	59 1/2	21-24	24-27	27-30	29-34	14
15	68	25-28	28-31	31-35	35-39	16
17	76 1/2	29-31	32-36	36-40	40-44	18
19	85	32-35	37-40	41-45	45-49	20
21	93 1/2	36-39	41-44	46-49	50-55	22
23	102	40-43	45-48	50-54	56-60	24
25	110 1/2	44-46	49-53	55-59	61-65	26
27	119	47-50	54-57	60-64	66-70	28
29	127 1/2	51-54	58-61	65-68	71-76	30
31	136	55-58	62-65	69-73	77-81	32
33	144 1/2	59-61	66-70	74-78	82-86	34
35	153	62-65	71-74	79-83	87-91	36
37	161 1/2	66-69	75-78	84-87	92-97	38
39	170	70-73	79-82	88-92	98-102	40
41	178 1/2	74-76	83-87	93-97	103-107	42
43	187	77-80	88-91	98-102	108-112	44
45	195	81-84	92-95	103-106	113-118	46
47	204	85-88	96-99	107-111	119-123	48
49	212 1/2	89-91	100-104	112-116	124-128	50
51	221	92-95	105-108	117-121	129-133	52
53	229 1/2	96-99	109-112	122-125	134-139	54
55	238	100-103	113-116	126-130	140-144	56

No. of Full Spaces Required	Fabric Width Hemmed	Panel Coverage 120% Fullness	Panel Coverage 100% Fullness	Panel Coverage 80% Fullness	Panel Coverage 60% Fullness	* No. of Carriers
57	246 1/2	104-106	117-121	131-135	145-149	58
59	255	107-110	122-125	136-140	150-154	60
61	263 1/2	111-114	126-129	141-144	155-160	62
63	272	115-118	130-133	145-149	161-165	64
65	280 1/2	119-121	134-138	150-154	166-170	66
67	289	122-125	139-142	155-159	171-175	68
69	297 1/2	126-129	143-146	160-163	176-181	70
71	306	130-133	147-150	164-168	182-186	72
73	314 1/2	134-136	151-155	169-173	187-191	74
75	323	137-140	156-159	174-178	192-196	76
77	331 1/2	141-144	160-163	179-182		78
79	340	145-148	164-167	183-187		80
81	348 1/2	149-151	168-172	188-192		82
83	357	152-155	173-176	193-197		84
85	365 1/2	156-159	177-180			86
87	374	160-163	181-184			88
89	382 1/2	164-166	185-189			90
91	391	167-170	190-193			92
93	399 1/2	171-174				94
95	408	175-178				96
97	416 1/2	179-181				98
99	425	182-185				100
101	433 1/2	186-189				102
103	442	190-193				104

* Includes one carrier (button position only) for attachment to master.
Ripplefold is a trademark of Kirsch.

EVERYTHING IN HARDWARE
FOR DRAPES AND TEXTILES



CASTELLANOS
DRAPERY HARDWARE

www.castellanosdraperies.com

2573 NW 74th Avenue, Miami FL 33122

P: 305.597.8671 F: 305.597.8673 E: info@megamarinc.com