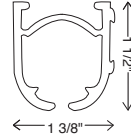


CASTELLANOS DRAPERY HARDWARE

ROMAN BLIND SYSTEM



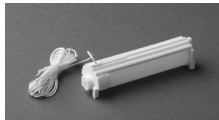
41019-25

19' aluminum extrusion-white, powder coated tube
19' x 10 tracks/bundle = 190'

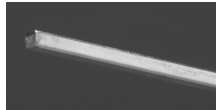
ASSEMBLED PRICING - please specify wall or ceiling mount, number of cord roll supports, remote or wall switch and any other components needed. Counterweights will be sent only on request - at no extra charge. Crating and freight are additional.

APPLICATION	SHADE STYLE	MOUNTING	MAX WEIGHT
Chain Operated	Roman	Wall	1:4 gear up to 20 lbs.
	Balloon	Ceiling	1:2 gear up to 15 lbs.
			Cannot be spliced 1:1 gear up to 10 lbs.

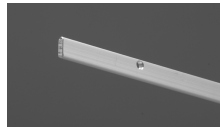
RBS COMPONENTS



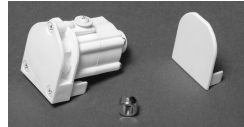
49003-25
Cord Roll Support w/Cord
12' drop length



41119-90
19' Rod
aluminum 3/16" x 3/16"



49005-25
Counterweight
aluminum 1" x 1/8"



Control Unit w/ End Cap & Retaining Ring
Heavy Duty, Self-braking
42311-25 1:4 gear to 20 lbs.
42312-25 1:2 gear to 15 lbs.
42310-25 1:1 gear to 10 lbs.



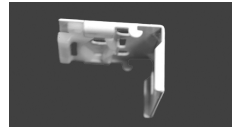
Endless Chain, White 100/bag -95 beige,
49020-25 29" -99 Ivory +10%
49021-25 39" drop lengths
49022-25 49" Available
49023-25 59"



43202-25
Swivel Wall Bracket



43003-25
Swivel Wall Bracket



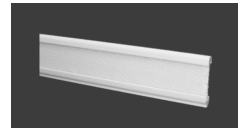
43033-25
Klick Wall Bracket



43004-25
Klick Ceiling Bracket



49008-25
Shade Leveler



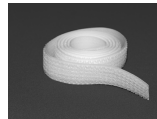
31116-25
Velcro Profile w/
Hook Tape, 13.1"



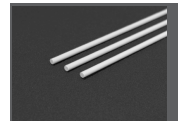
49090-25
Valance Bracket
attaches to velcro profile



49091-25
Valance Corners



39007-25
Velcro Tape



49006-25
Fiberglass Spines, 19'
3/16" diameter



49014-25
Plastic Snap Ring



49013-25
Plastic Ring Cord Guide



49400-25
Shroud



49500-00
Tension Device
for child safety