



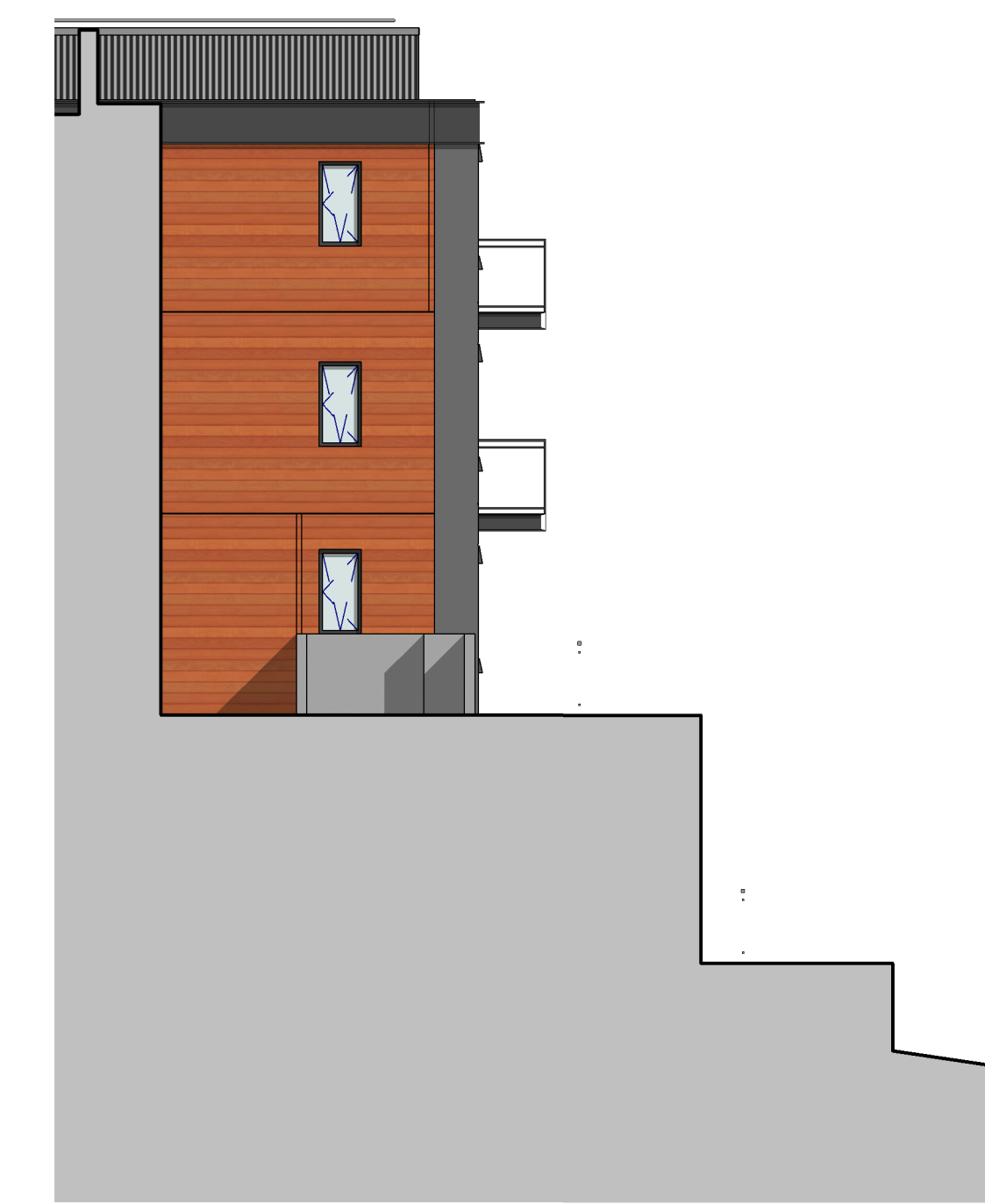
1 EAST ELEVATION - COLOR - MUP
1/8" = 1'-0"



3 NORTH - COURTYARD ELEVATION - COLOR
1/8" = 1'-0"



2 WEST ELEVATION - COLOR - MUP
1/8" = 1'-0"

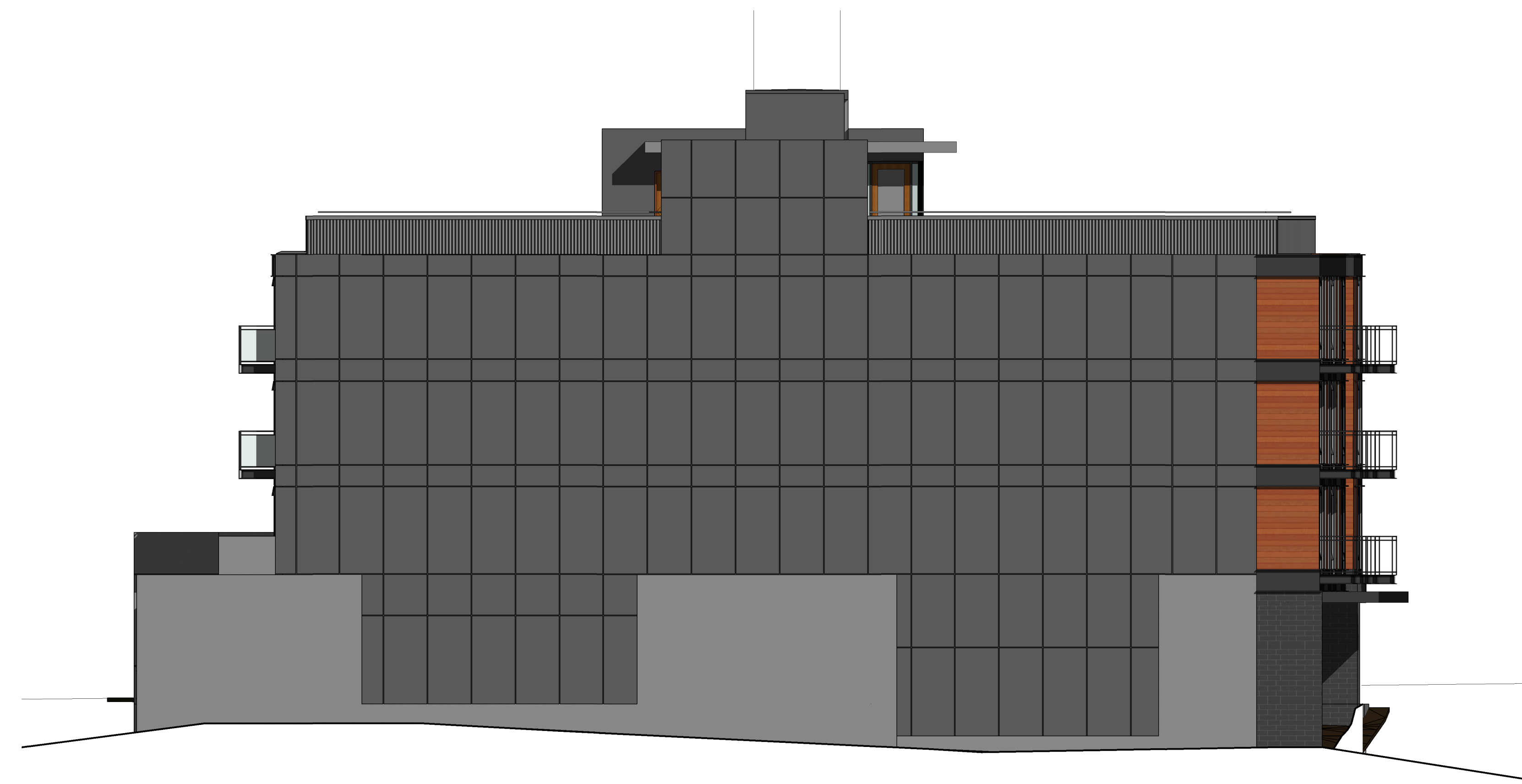


4 SOUTH - COURTYARD ELEVATION - COLOR
1/8" = 1'-0"

NOT FOR CONSTRUCTION



1 NORTH ELEVATION - COLOR - MUP
1/8" = 1'-0"



2 SOUTH ELEVATION - COLOR - MUP
1/8" = 1'-0"

NOT FOR CONSTRUCTION

©CDG