

MUNICIPAL LIGHTING SOLUTIONS



REDUCE LIGHTING COST & MAINTENANCE | CREATE COMMUNITY FESTIVITY

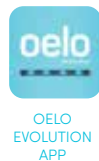


Lighting that keeps on giving.

Without the yearly hassle or annual cost.

Oelo Lighting Solutions has helped countless businesses, campuses and communities across the nation stand out with color-changing commercial LED lighting. Featuring Oelo's proprietary cloud-controlled technology, your corporation or municipality can have full control over your buildings' structural lighting to create infinite holiday color combinations and movement patterns for facility visibility, enhanced security and year-round celebration, all the while reducing maintenance.

A COMPREHENSIVE LED COMMERCIAL LIGHTING SYSTEM.



Find Oelo's app on:



CLOUD-BASED CONTROLS — PGS 4-7

- Six signal outputs, which allows you to control six zones from one controller for more creative installs and effects
- 16 million hues, plus pre-made patterns or custom creations
- Built-in scheduling feature to automatically turns on lights
- Secure iPhone or Android applications



ACRYLIC

METAL



OELO'S PERMANENT DESIGN — PGS 8-11

- Acrylic and metal cover options for mounting versatility
- Industry's only "hybrid" out-and-down capable system
- Available in an array of colors (or custom powder coat)
- UL-certified, IP68 waterproof-rated LED lights
- Rated for 100,000 of use (or 34 years of nightly glow)

WHY INVEST IN OELO?

- ✓ **INCREASE YOUR FACILITY'S VISIBILITY**
to create a presence in your community
- ✓ **REDUCE MAINTENANCE AND EXPENSES**
with a hassle-free, energy-efficient lighting system
- ✓ **ENHANCE THE SAFETY AND SECURITY**
of your structure with a well-lit exterior
- ✓ **BECAUSE IT'S FUN (EVERYONE WILL LOVE IT)**
with Oelo's color and movement settings

CUSTOMER CLOUD-BASED CASE STUDIES — PAGE 6-7

TARLETON STATE UNIVERSITY ▼

A nighttime photograph of a modern university building. The building features a mix of brick and large glass windows. The roofline and some architectural details are highlighted with bright blue and white LED strip lighting. A prominent cylindrical glass structure on the right side of the building is also illuminated with blue light. The scene is set against a dark night sky, with some streetlights visible in the foreground.

7 YEAR
WARRANTY

Backed by a 70-year-old parent company with 30 years in the mission critical lighting, Oelo products are built to last. Our UL-certified, IP68-rated LEDs are rated for 100,000 hours of use, and each system comes with a seven-year warranty.*

* On Authorized, Preferred and Platinum Dealer installs. Oelo honors a five-year warranty on Contractor / DIY installs.



Control and schedule lighting effects using our iPhone/Android app through WiFi, cellular or Ethernet connection.



Control 16 million colors, fun movement settings, infinite patterns AND multiple buildings from anywhere in the world.

Secure with lots of control!

- ✓ Controller: SSL/TLS 1.2
- ✓ App/Cloud SSL: SHA-256 with RSA Encryption
- ✓ Data: User information is stored on the cloud; all passwords are hashed
- ✓ Six individually addressable outputs: Allows one controller to operate more than half a dozen zones separately



Multiple buildings, color-changing, from anywhere!

Give your buildings a green St. Patrick's day glow, create breast cancer awareness with a pink campus or add custom movement to attract attention with Oelo's **cloud-based, color-changing LED system**, controlled from your iPhone/Android device through WiFi, cellular or Ethernet connection. From a management standpoint, Oelo is a no-brainer, helping the grounds crew eliminate the ongoing time and money it takes to hang and coordinate holiday lights on an annual basis.



BREAST CANCER AWARENESS



FOURTH OF JULY



LOCAL TEAM SPIRIT



CHRISTMAS

When businesses make the world a brighter place, they shine more.

Oelo is proud to have worked with many esteemed campuses and communities across the nation, including these ones ...



Children's Hospital

To help brighten patients' stay at its 40-acre healthcare campus, Children's Hospital Colorado accented its welcoming structure with a 6,200-linear-foot Oelo system that features more than 8,000 individual LEDs and illuminates 14 different rooflines.



Tarleton State University

Tarleton State University's cloud-controlled Oelo system touts 7,500 lights and 14 control units to illuminate nine buildings spread throughout Stephenville, Texas' 122-year-old campus. The university's color of choice? Tarleton purple!



The City of Fort Collins

Right in our very own backyard, Oelo is proud to illuminate five different City of Fort Collins community buildings, combining 1,800 lights and Oelo's proprietary cloud-based system to accent a number of buildings, including City Hall and the police station.





CHILDREN'S HOSPITAL COLORADO



TARLETON STATE UNIVERSITY



THE CITY OF FORT COLLINS



Invisible by day ... seamless by design.



Seamless channel

Spreading a little holiday cheer takes time and money. Whether you hang your own Christmas lights or pay for light leasing, installation and removal, the yearly hassle can cut into budget. With Oelo's commercial lighting solutions, you only have to deal with the upfront cost and a one-time install. Oelo's patented system blends in seamlessly with any structure, available in metal or acrylic covers.



COMMERCIAL-GRADE METAL

Our Colorado-made metal LED channel offers quick installation. With minimal mounting components, the metal channel is perfect for large-scale commercial projects.

- ✓ **LED appearance:** Snaps into channel for quick install and even spacing
- ✓ **Length:** 7' 6" increments that can be cut to size, allowing the system to be customizable
- ✓ **Colors:** Powder coated in an array of standard color options (OR you can inquire about color-match!)

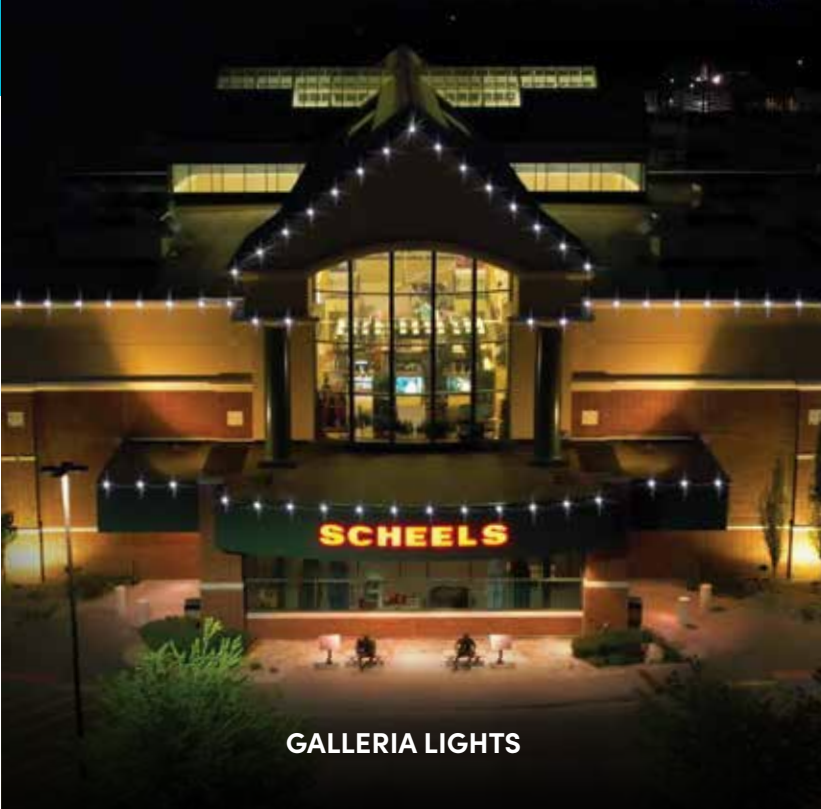


IMPACT-RESISTANT ACRYLIC

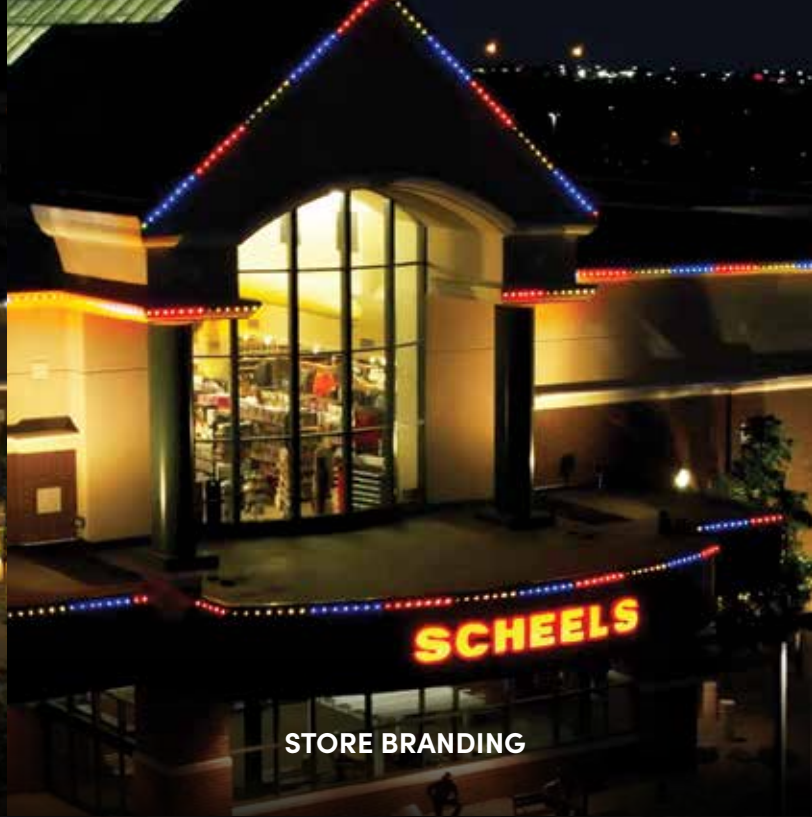
Oelo's acrylic cover features an impact-resistant, fade-resistant flush design. Because our LEDs are IP68 waterproof rated, the main function of this cover is to aesthetically mount the lights.

- ✓ **LED appearance:** Spaced 10" or closer behind translucent lens for a flush look
- ✓ **Length:** 8' increments that can be cut to size, allowing the system to be customizable
- ✓ **Colors:** Available in a variety of standard colors.





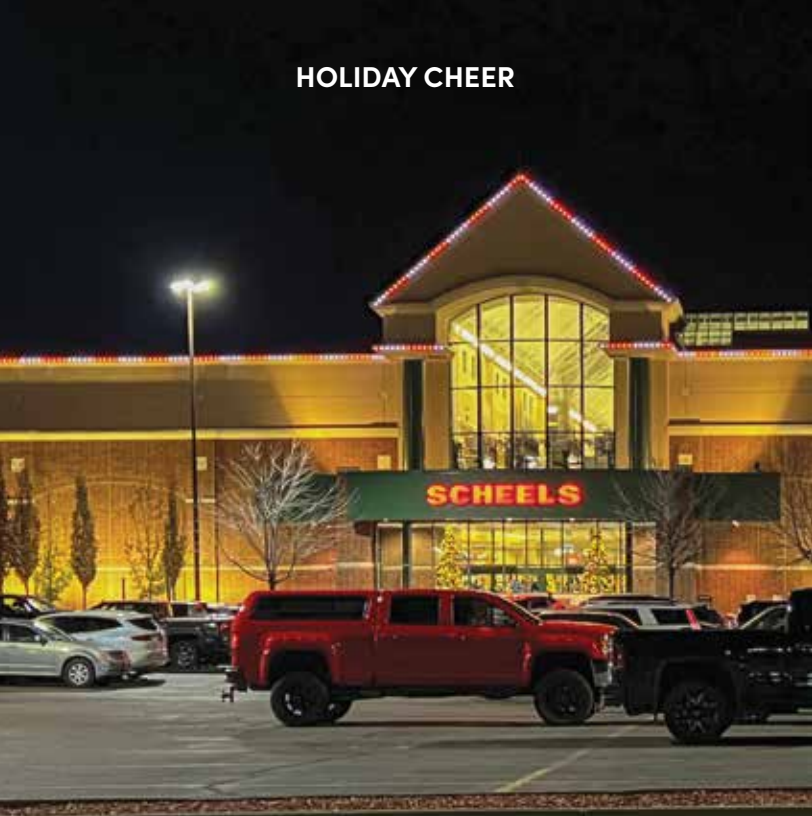
GALLERIA LIGHTS



STORE BRANDING



SPORTING SPIRIT!



HOLIDAY CHEER

Versatile lighting for years to come.

Our IP68 water-proof rated LED lights deliver Oelo's infinite customizable lighting capabilities. Plus, each 36V system is rated for 100,000 hours of use, the equivalent of 34 years of nightly eight-hour glow! Meanwhile, Oelo's patented cover system is designed to withstand the elements while providing the industry's most versatile mounting options.



FACE MOUNT
The traditional holiday look

YOU CHOOSE: OUR TRADITIONAL GLOW
OR OELO'S WALL-WASH LOOK. **OR BOTH!**



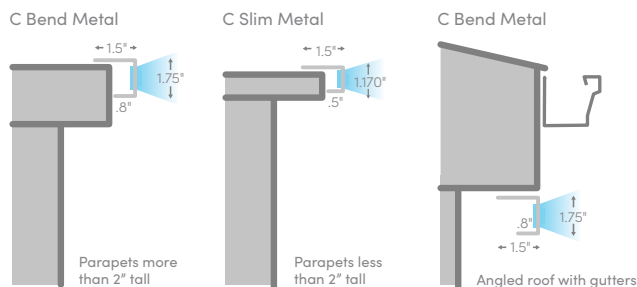
ACCENT MOUNT
Exterior wall grazing



**CAN ALSO BE MOUNTED
FOR PATIO LIGHTING!**

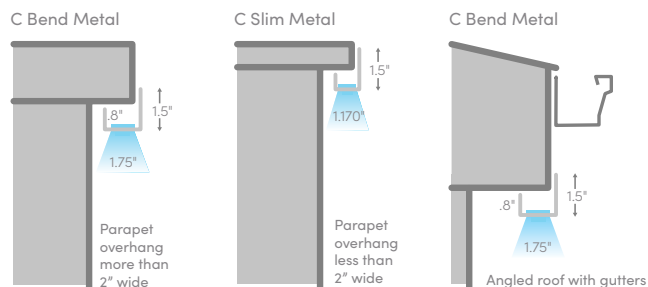
1 FACE MOUNT

Oelo can be hung on the fascia, pointing outward for a traditional Christmas light glow. The system's LEDs are visible from every angle using this effect. And while this is considered our most traditional look, Oelo's app lets you create "gaps" in the lighting by allowing you to control each individual LED for a modern lighting galleria effect.



2 UNDER MOUNT

Oelo is one of the few permanent lighting systems that can be hung BOTH on the fascia AND under the eaves. The under-mount effect creates a wall-wash glow, illuminating the exterior with color to eliminate shadows and highlight the wall. This effect is compliant with the Dark Sky Initiative because the LEDs are angled downward.



UNDER MOUNT
The outdoor wall-wash effect

POLICE STATIONS



FIRE STATIONS

oelo

LIGHTING SOLUTIONS



Get your FREE commercial
LED lighting quote from
your local Oelo dealer!

oelo.com | 970.212.3670 | 3842 Redman Dr., Fort Collins, CO

All information in this brochure is the latest available at time of publication.
Printed in the USA. 2.5K 0124 2024 Oelo

WeLightKC
.COM

19947 W 162nd Street, Olathe, KS 66062

913.585.4700