

2177 TIMBER RIDGE, BAYSHORES  
WHISTLER, B.C.

UPPER LEVELS

2,017 sq ft

(2,115 sq ft - 98 sq ft OTB)



AREA

UPPER LEVELS	2,017 sq ft
LOWER LEVELS	1,880 sq ft
BASEMENT	205 sq ft
TOTAL	4,102 sq ft

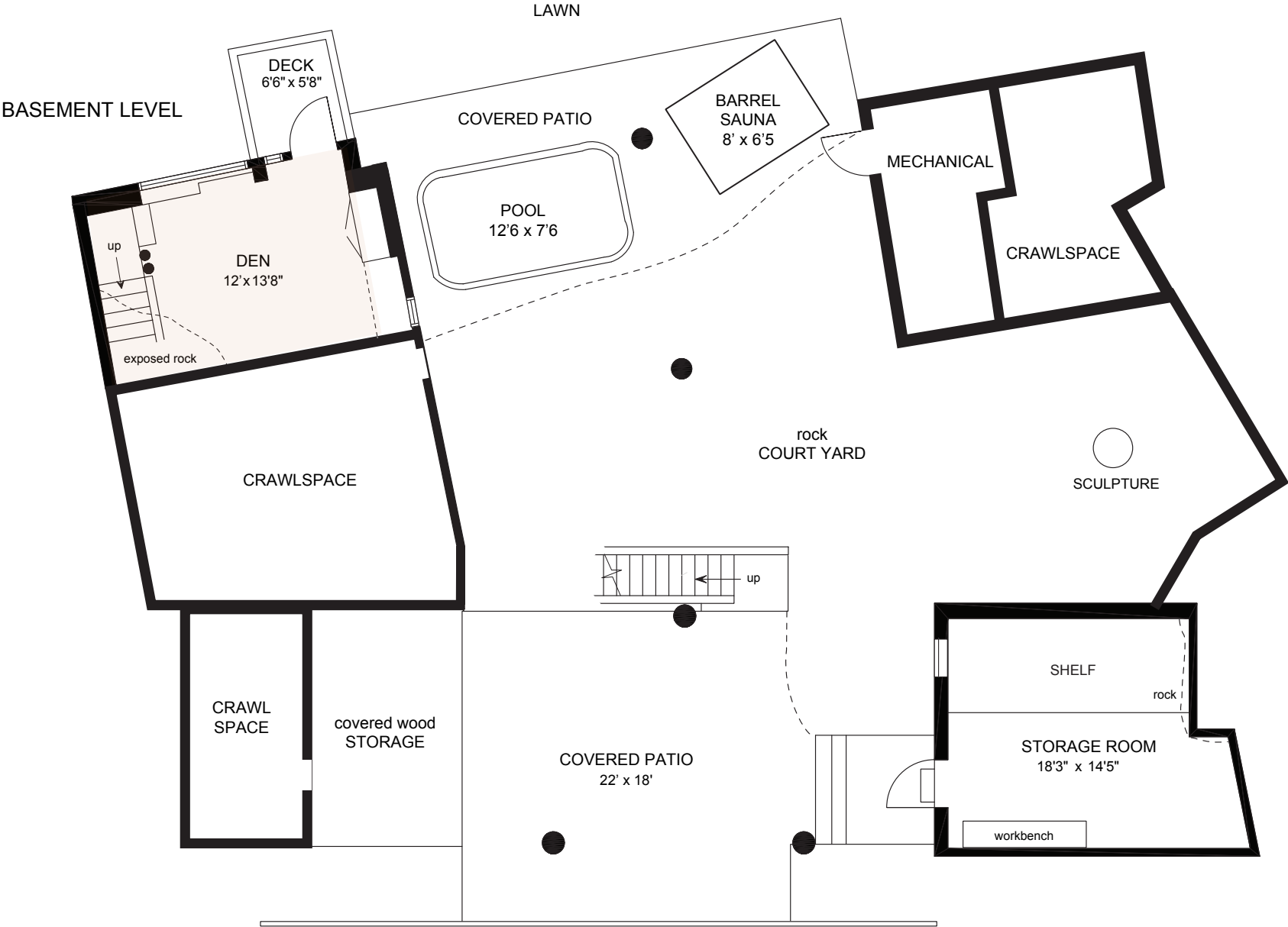
GARAGE	415 sq ft
Decks (including Rooftop)	680 sq ft
Enclosed Porches	305 sq ft

2177 TIMBER RIDGE, BAYSHORES  
WHISTLER, B.C.

LOWER LEVELS  
1,880 sq ft



2177 TIMBER RIDGE, BAYSHORES  
WHISTLER, B.C.



2177 TIMBER RIDGE, BAYSHORES  
WHISTLER, B.C.

ROOFTOP LEVEL

