



PYN AUTOCOMP PVT.LTD

COMPANY OVERVIEW

- PYN is a precision component machining and manufacturing company based in Pune, India.
- PYN has extensive experience in the [Automotive and Engineering components business](#).
- PYN has established customers such as [Carraro](#), [American Axle](#), [Daimler India Commercial Vehicles](#), [Neosym](#), [Mahindra CIE](#), [Forbes Marshall Group](#), [Wipro](#), [Dana India](#), [Oerlikon Fairfield](#), [Western India Forgings](#), etc
- .
- Our core skill-set is in manufacturing and machining precision components as well as in new product/component development with the highest quality standards.
- IATF 16949:2016 Quality Management System certified by BSI.
- ISO 45001:OHSAS, ISO 14001:Environmental Management (in process)
- We are a proud member of Automotive Component Association of India (ACMA) and DCCIA Pune.



MANAGEMENT

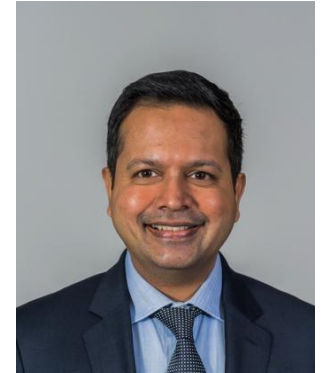
Aditya Pittie

M.S./MBA - MIT (USA)

B.S.Engg - Univ. of Mich. (USA)

Aditya is the owner of the Pittie Enterprises Group - a diversified conglomerate with interests in precision automotive component manufacturing, solar photovoltaic and solar thermal energy solutions, PayGo technologies, real estate, finance and startup investing.

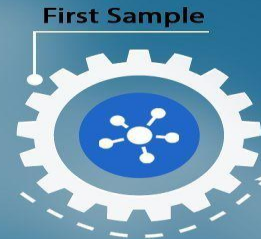
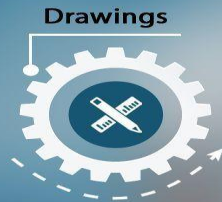
Aditya graduated first in his class and holds a B.S.Engineering degree (Summa Cum Laude) in Materials Science and Engineering from the University of Michigan, Ann Arbor. He holds an MS/MBA degree in Management and Technology from the Massachusetts Institute of Technology.



DIFFERENTIATOR



Our differentiator is in the production and reliable supply of complex machined components with highest quality and zero defects at low cost due to stringent quality processes and production systems, low in-house rejection rate, high productivity and machine utilisation and stringent cost control of all inputs.



PRODUCTS (indicative)



Axle and Transmission

- Planetary Carrier
- Gear Housing
- Wheel hub



PRODUCTS (indicative)



Axle and Transmission

- Epicyclic carrier
- Backing plate
- Flange
- Differential carrier
- Rear axle brackets
- Spindle



PRODUCTS (indicative)



Passenger Car HVAC

- Tube Connectors
- Compressor mounting brackets



Engineering

- Flow meter housing



Engine

- Flywheel

Construction

- Rod Head Fork



Differential Housing

Leaf Spring Saddle

CUSTOMERS

DAIMLER

neosym

 CARRARO

Mahindra
Rise.

 Forbes
Marshall
Trusted Partners.
Innovative Solutions.

 Western India
Forgings Pvt. Ltd.
An ISO 9001 Company



oerlikon
fairfield



BHARATBENZ



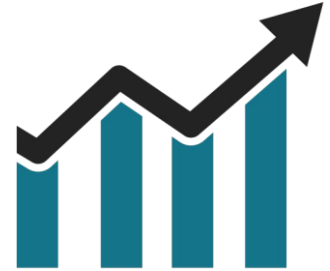
GROWTH DRIVERS

- PYN is looking to rapidly expand and cater to new business from the auto and engineering majors as well as for exports.
- PYN is also actively looking at setting-up facilities for new product lines and assemblies.
- PYN has adequate financial and technical strengths to expand and cater to new business.



FUTURE PLANS

- Expansion of existing product lines: axles, transmission, powertrain
- Forward integration into assemblies, systems
- Acquisitions in India and abroad
- Technology-led growth through foreign collaborations, JV's
- New Verticals: Aerospace, Defense, Railways.
- New verticals – Aerospace, Defense, Railway, Electric Vehicles
- Export of products and assemblies.
- And more.....



QUALITY ASSSSURANCE

- IATF 16949:2016 certified by BSI
- High quality consistency
- Zero rejections at customer end
- Near-perfect repeatability of close tolerances

PYN is committed to meeting and exceeding customer expectations of products and services through highest quality, on-time delivery and zero defects while maintaining the highest standards of fairness, integrity, transparency, trust, safety and morale to emerge as a leading precision component manufacturer.

OBJECTIVES:

Zero defects

On-time delivery

Improvement in customer satisfaction level



★ IN PROCESS

CUSTOMER VALUE PROPOSITION

- Customer Oriented
- Ability to understand customer needs
- Ability to reliably deliver unsurpassed quality and cost effective products
- State-of-the-art Manufacturing Capability
- Spare capacity available as well as option for setting up new dedicated capacity
- World Class Technology.
- Full Service Supply Capability.
- Wide product profile
- 'Speed to Market'
- Cost efficiency
- Comprehensive engineering and product development capability



CUSTOMER CERTIFICATION



CERTIFICATE OF APPRECIATION

Mahindra CIE
Foundry Division

SUPPLIER NAME: PYN AUTO COMP PVT. LTD. (GPO363)

In recognition of your commitment and contribution in building a strong global Mahindra CIE brand that will guide our success today and in the future. Hereby we congratulate you for;

Zero customer complaint in CY'21

Mr. BHADORIA RHIDESH
Machining Quality Head
Mahindra CIE Automotive Ltd.

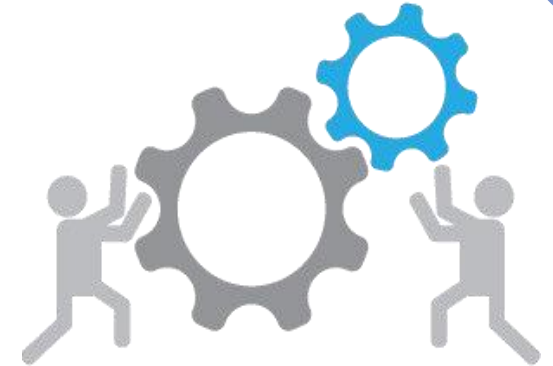
Mr. PAHARIA VAIBHAV
Sales & Supplier M/C Head
Mahindra CIE Automotive Ltd.

Mr. VADLAPUDI RAJENDRA
COO
Mahindra CIE Automotive Ltd.



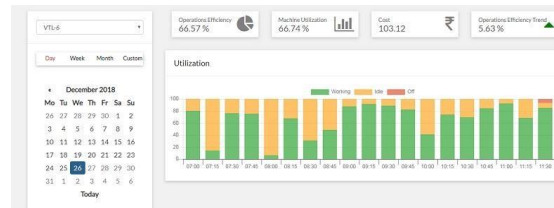
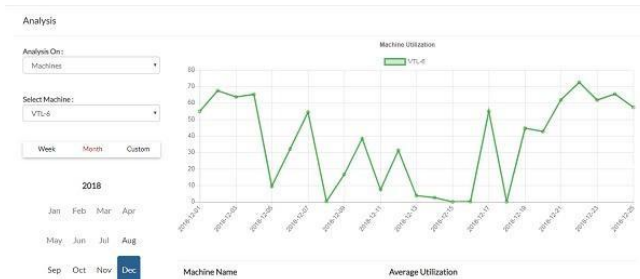
STRENGTHS

- Highest quality standards with proven and long established track record of supplying critical line items to our customers with Zero PPM.
- Internal machining standards are maintained at half tolerance of all specifications thereby leading to high Cp/Cpk
- Stringent inspection and QA
- Robust backward integration of our supply-chain
- Rapid development to delivery with reduced time and cost
- Impeccable reputation and long term relationship with all our stakeholders
- Stable and growing business from global OEM's



NEW TECHNICAL CAPABILITIES

- Industry 4.0
- IoT
- Online OEE, Breakdown, SPC, Cp, Cpk
- AI Image Processing
- HMC
- 4th Axis
- Online gated community, security cameras, ERP
- Virtual Receptionist





THANK YOU

PYN AUTOCOMP PVT.LTD



Gat No. 193-196, Sanaswadi, Pune - 412208, India .



+917414962376, 7774065667



www.pyn.in