

FIRST FLOOR PLAN

- EMPLOYEES WITH PATIENTS
- REMOTE REAR
- SUPPLY ROOM
- ILLUMINATED WITH PATIENTS
- EXIT
- ELEVATOR

PROJECT: VISITING NURSES ASSOCIATION  
OF POTTSTOWN & VICINITY  
1963 F. HIGGINS STREET  
POTTSTOWN, PA

LOWER POTTSGROVE TOWNSHIP, MONTGOMERY COUNTY, PA

DRAWING: FIRST FLOOR PLAN

**ARCHITECTURAL ALLIANCE**  
ARCHITECTURE • PLANNING • INTERIOR DESIGN • GRAPHIC ARTS  
1500 PINE STREET, SUITE 200  
POTTSTOWN, PA 17860  
TEL: 610-326-1000

PROJECT NUMBER: 005  
DATE: 11/7/95

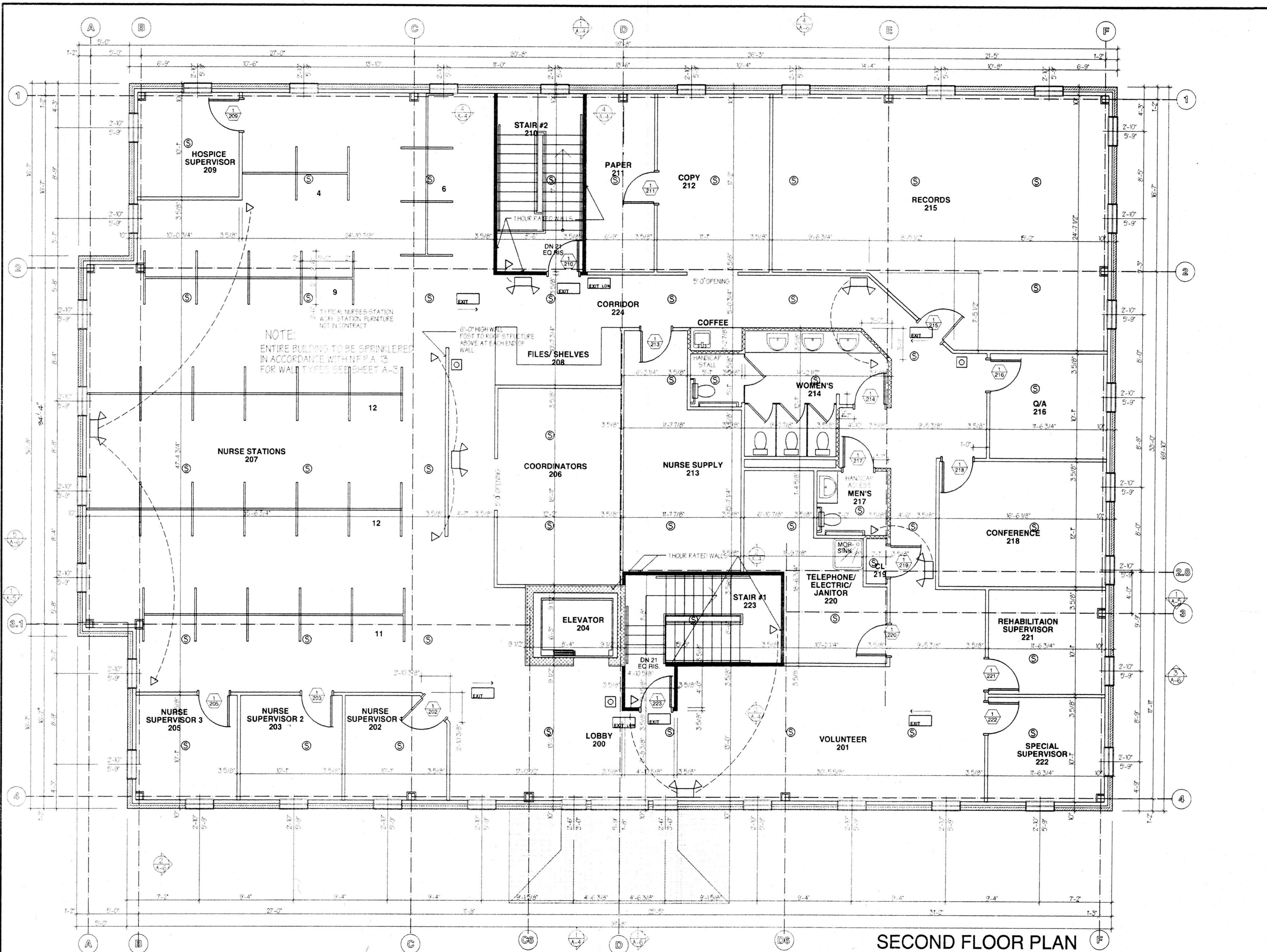
**A-1**

SCALE: 1/8" = 1'-0"  
DATE: 11/7/95

DRAWN BY: J. HARRIS

CHECKED BY: J. HARRIS

REVISIONS:



SECOND FLOOR PLAN

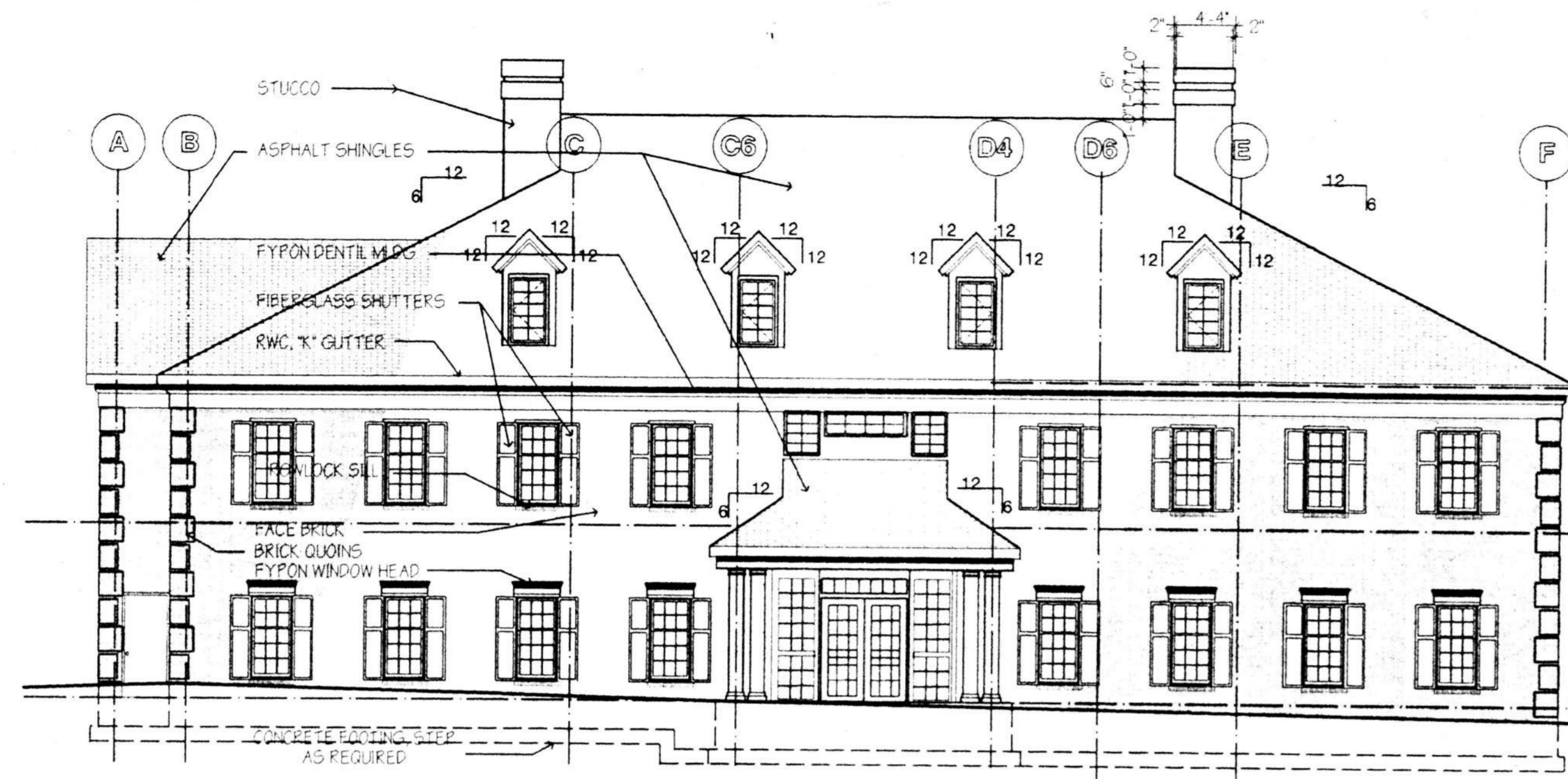
PROJECT: VISITING NURSES ASSOCIATION OF POTTSTOWN & VICINITY  
1963 E. HIGH STREET  
POTTSTOWN, PA

LOWER POTTSGROVE TOWNSHIP, MONTGOMERY COUNTY, PA  
DRAWING: SECOND FLOOR PLAN  
DRAWN BY: \_\_\_\_\_  
CHECKED BY: \_\_\_\_\_

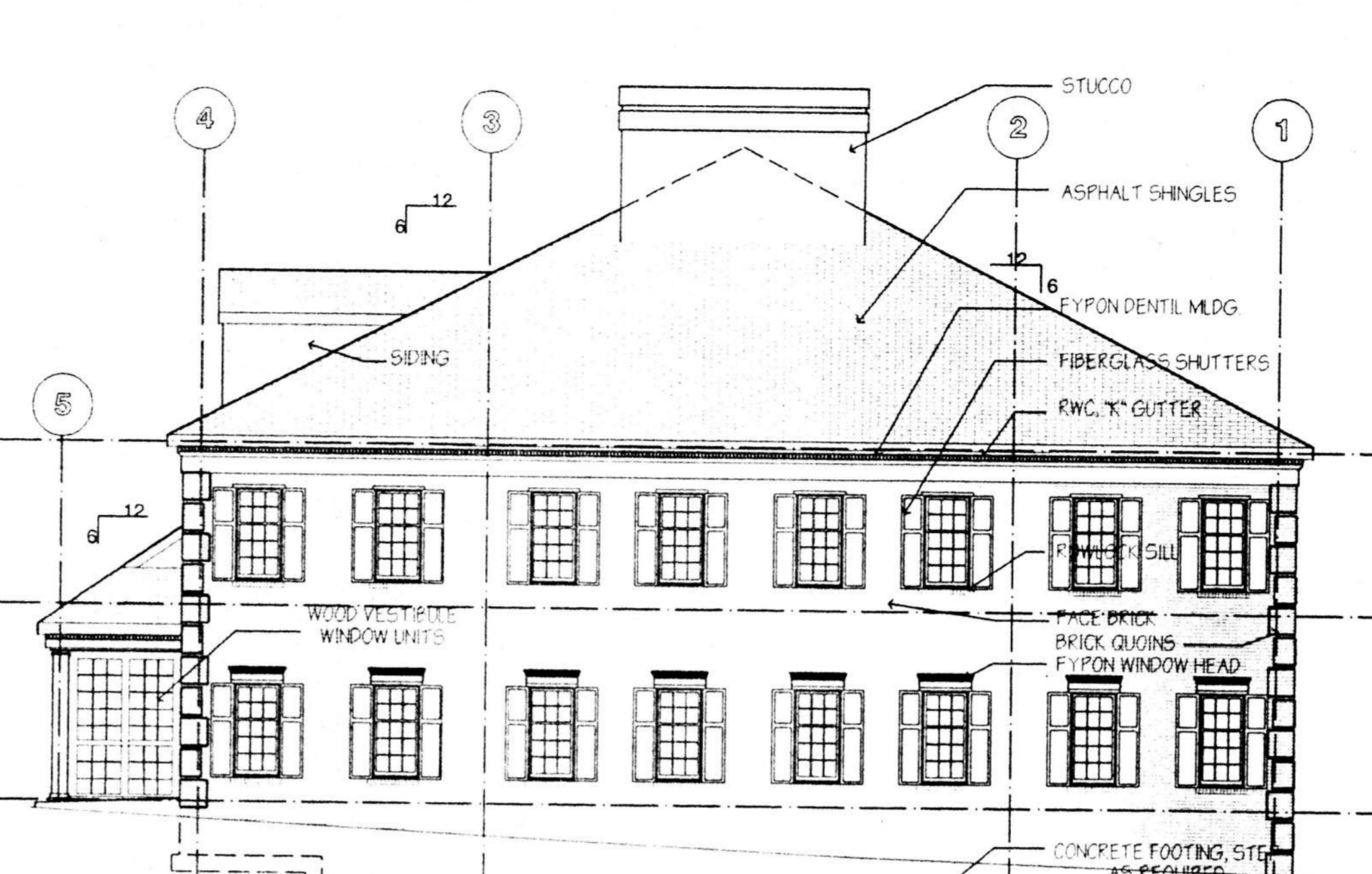
REVISIONS

**ARCHITECTURAL ALLIANCE**  
ARCHITECTURE • PLANNING • INTERIOR DESIGN • GRAPHIC ARTS  
1800 PENNSYLVANIA AVENUE  
WILMINGTON, DE 19806  
TEL: 302-426-9000  
FAX: 302-426-9001

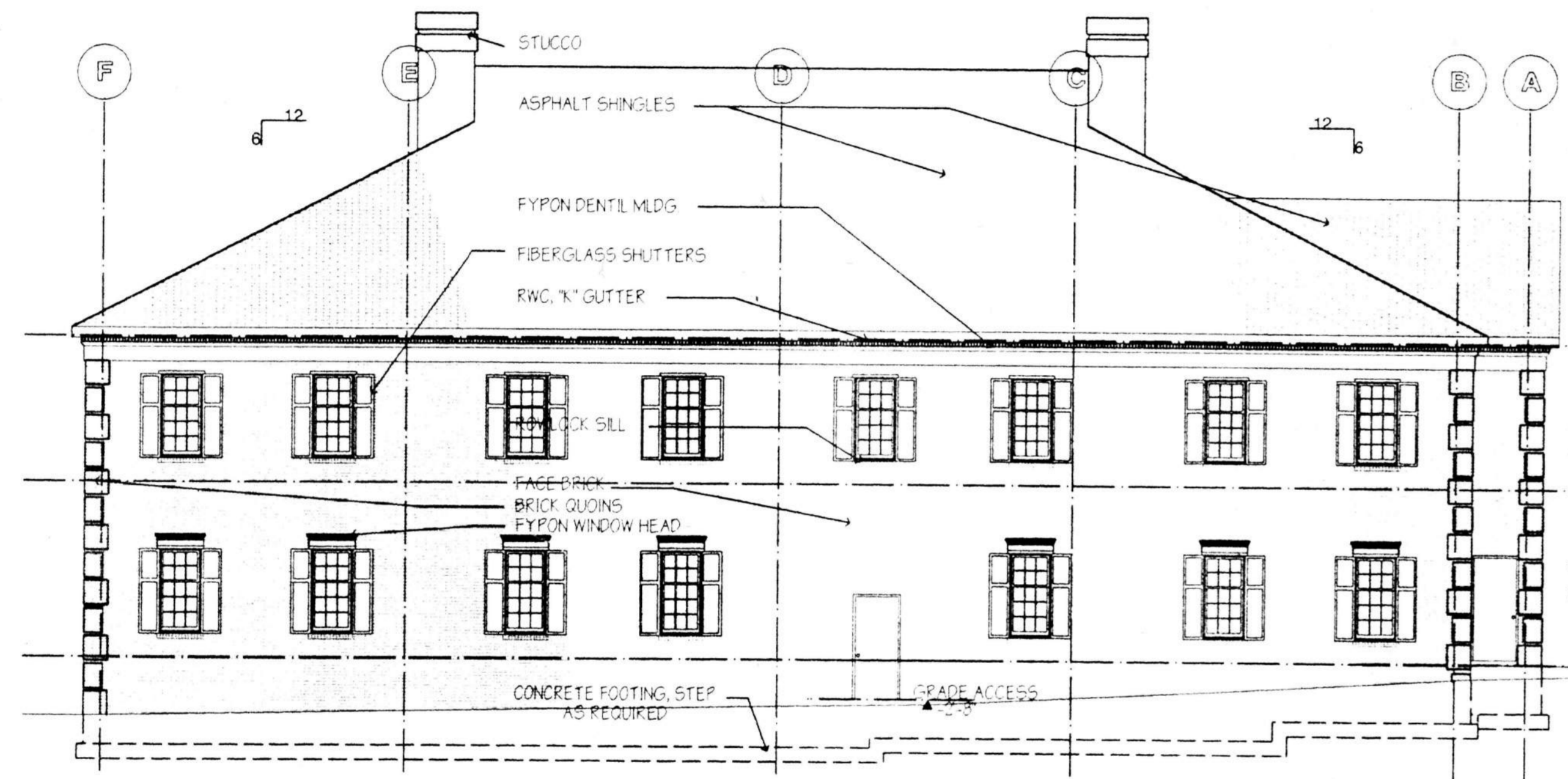
PROJECT NUMBER 94157  
DRG. NO. 2 OF 14  
**A-2**  
SCALE: 1/4" = 1'-0"  
DATE: 11/14/95



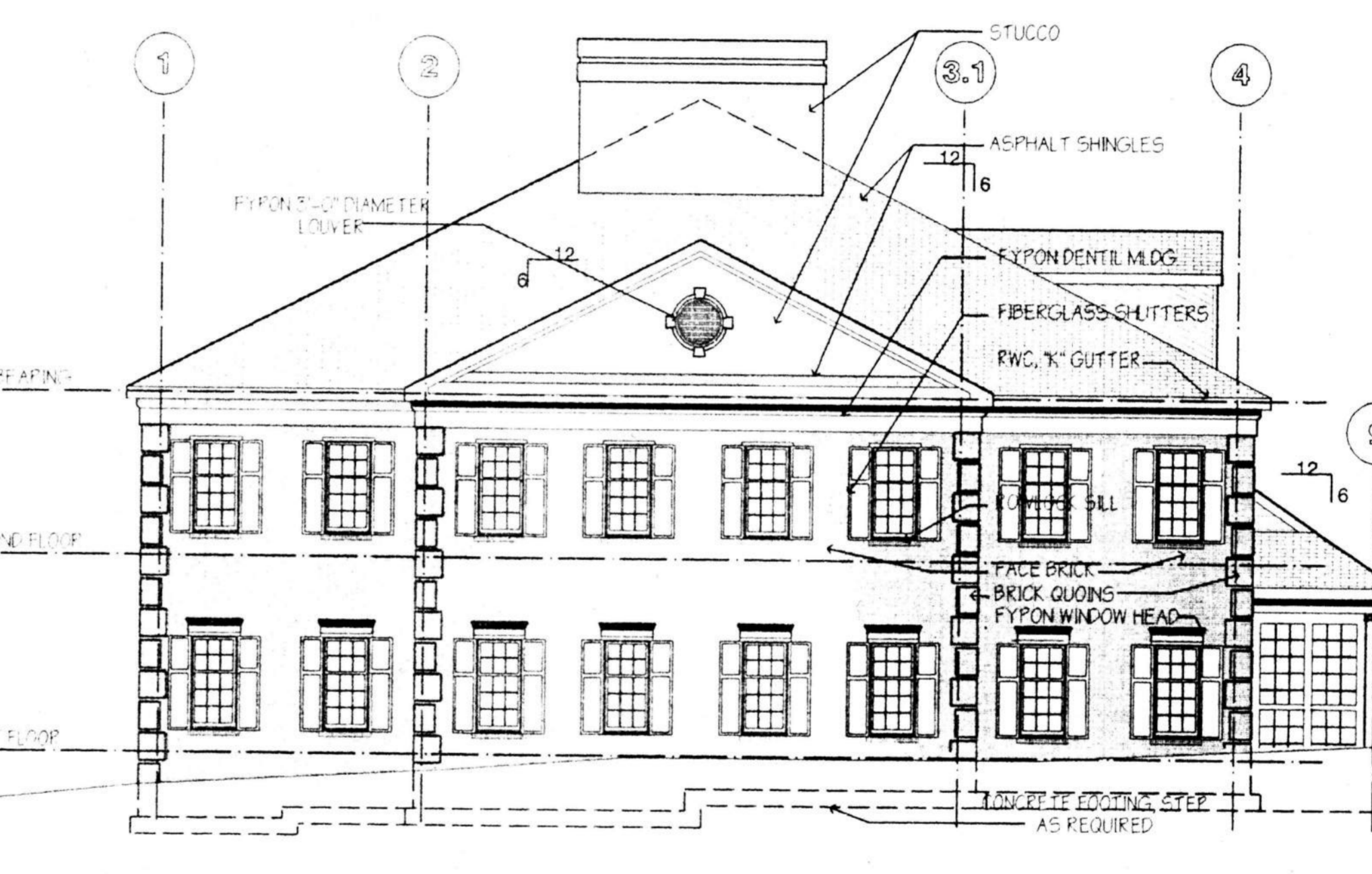
EAST ELEVATION



NORTH ELEVATION



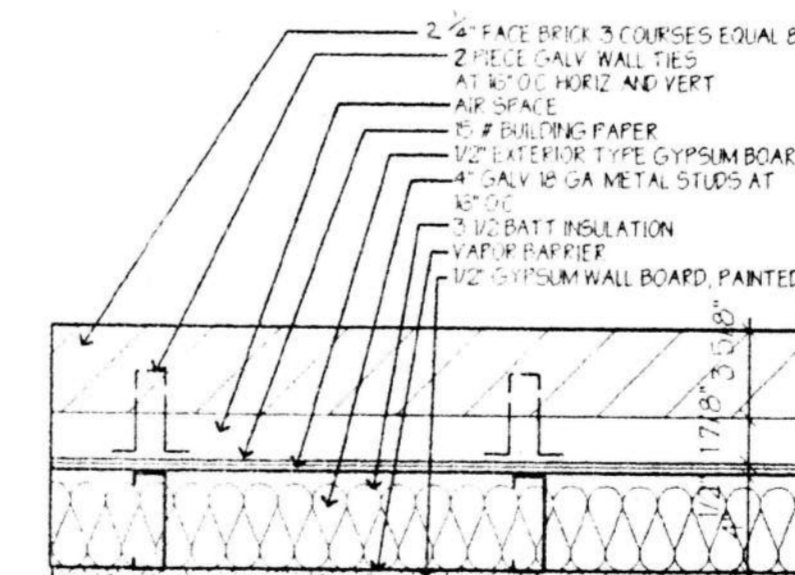
WEST ELEVATION



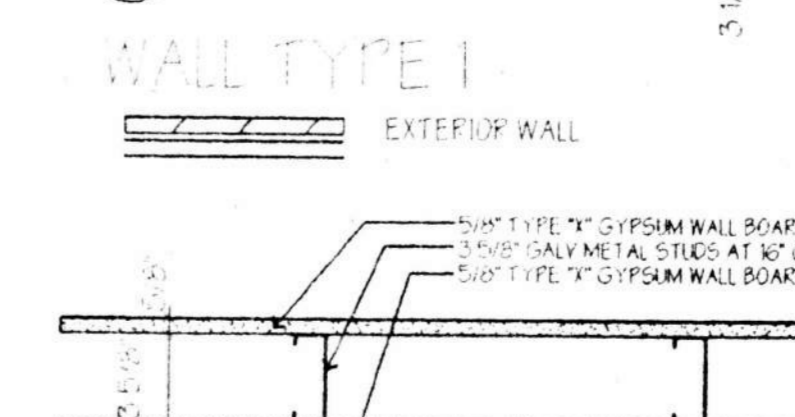
SOUTH ELEVATION

**GENERAL NOTES**

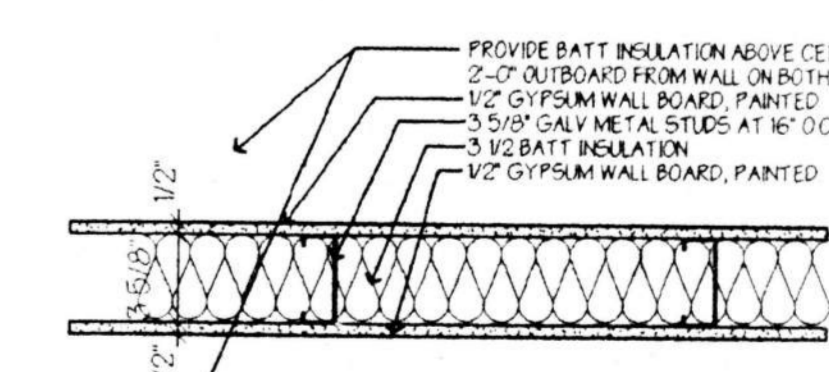
- CONTRACTOR SHALL VERIFY ALL CONDITIONS IN THE FIELD AND ON THE DRAWINGS. ANY DISCREPANCY SHALL BE BROUGHT TO THE ATTENTION OF THE ARCHITECT BEFORE STARTING THE WORK.
- CONSTRUCTION SHALL BE IN ACCORDANCE WITH ALL GOVERNING BUILDING CODES AND SAFETY REGULATIONS.
- ANY COPING AND FLASHING WORK SHALL CONFORM TO THE RECOMMENDATIONS OF SMACNA "ARCHITECTURAL SHEET METAL MANUAL", 4TH EDITION, 1987.
- THE CONTRACTOR SHALL SUBMIT SHOP DRAWINGS TO THE ARCHITECT FOR APPROVAL AS FOLLOWS, BUT NOT LIMITED TO:
  - FOUNDATIONS
  - REINFORCED MASONRY AND ACCESSORIES
  - ANCHOR BOLTS
  - STRUCTURAL STEEL
  - STEEL JOISTS
  - MISCELLANEOUS METALS
- ALL EXTERIOR DIMENSIONS ARE TAKEN TO THE FACE OF WALL, UNLESS OTHERWISE NOTED.
- ALL INTERIOR DIMENSIONS ARE TAKEN TO THE FACE OF METAL STUDS UNLESS NOTED OTHERWISE.



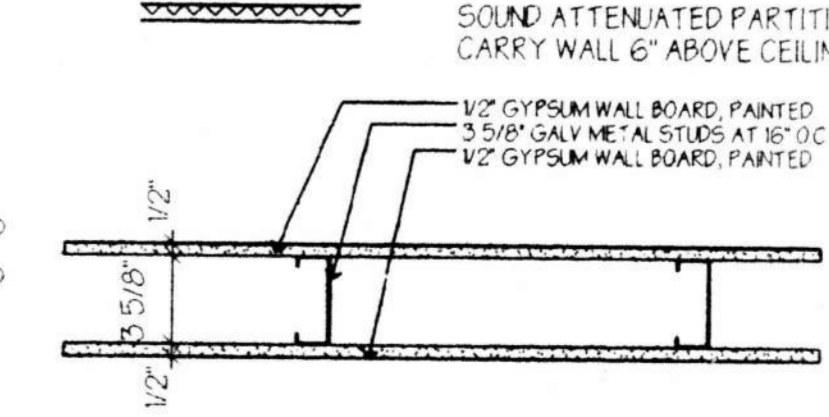
WALL TYPE 1  
EXTERIOR WALL



WALL TYPE 2  
1 1/2\"/>



WALL TYPE 3  
SOUND ATTENUATED PARTITION  
CARRY WALL 6\"/>



WALL TYPE 4  
TYPICAL INTERIOR PARTITION  
CARRY WALL 6\"/>

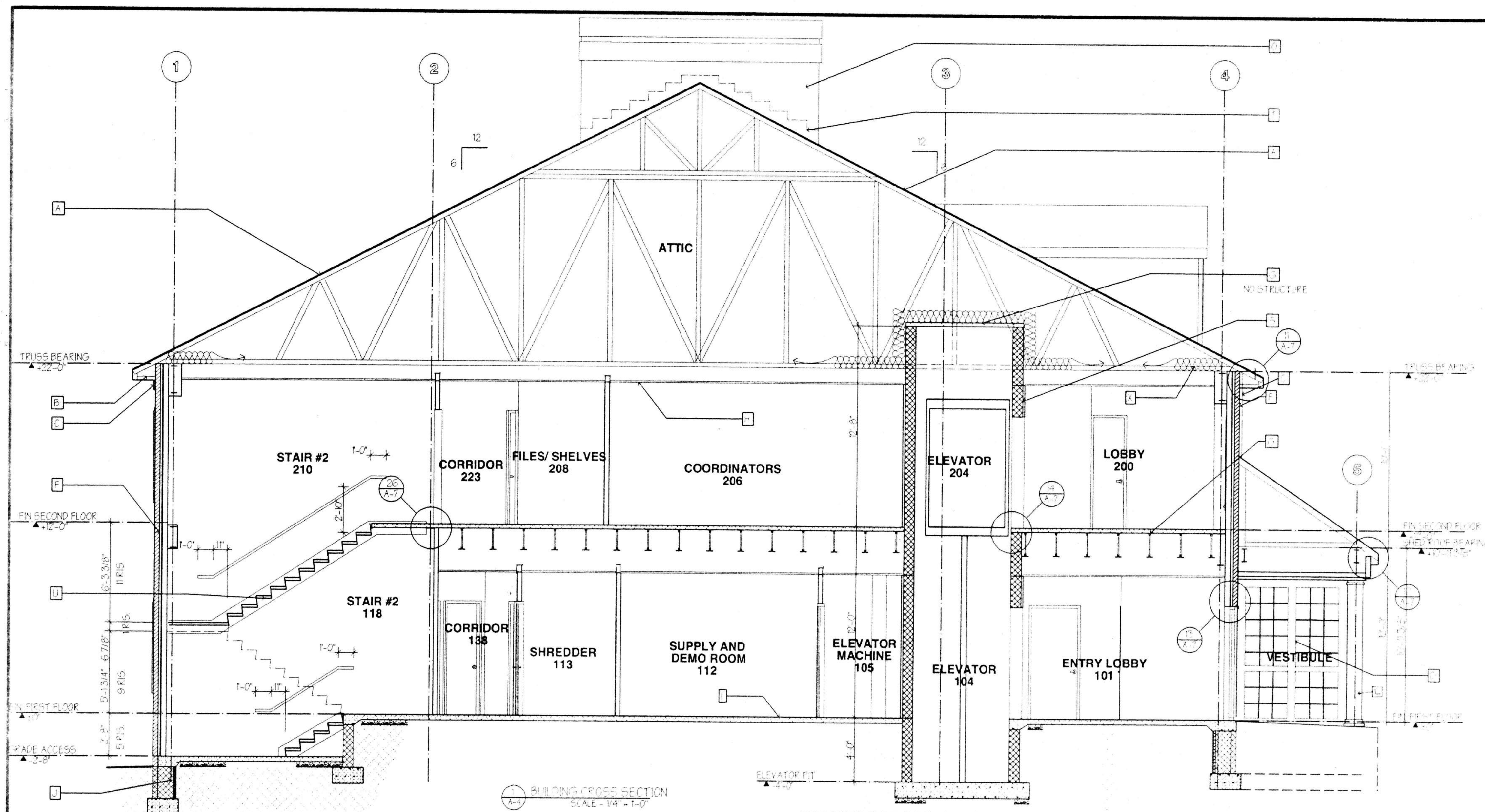
DRAWN BY		CHECKED BY	
REVISIONS		REVISIONS	

PROJECT: VISITING NURSES ASSOCIATION  
OF POTTSTOWN & VICINITY  
1963 E. HIGH STREET  
POTTSTOWN, PA  
LOWER POTTSGROVE TOWNSHIP, MONTGOMERY COUNTY, PA

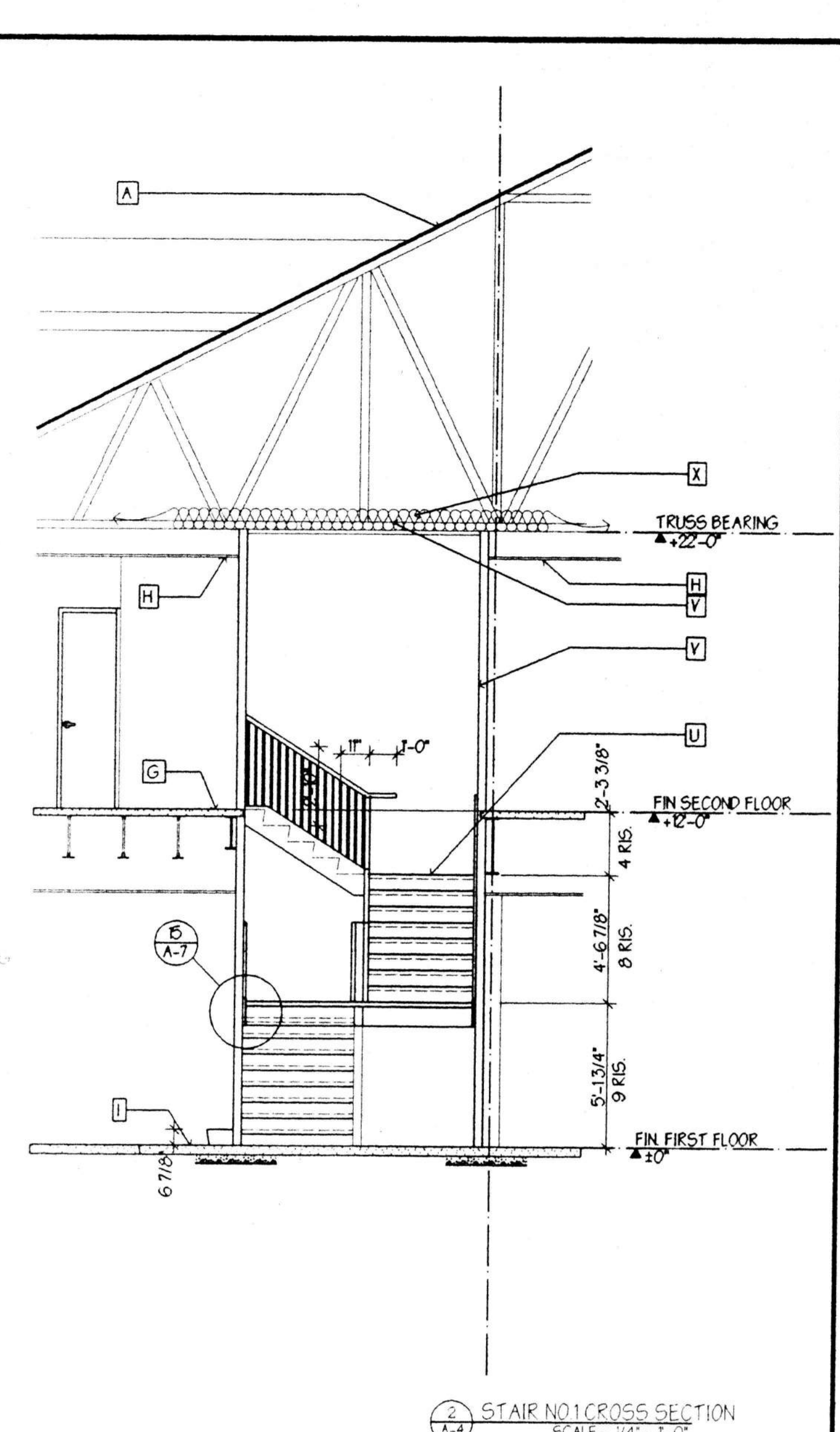
DRAWING ELEVATIONS, WALL TYPES, GENERAL NOTES

**ARCHITECTURAL ALLIANCE**  
ARCHITECTURE - PLANNING - INTERIOR DESIGN - GRAPHIC ARTS  
SUITE 602  
1800 PENNSYLVANIA BLVD.  
WILMINGTON, DE 19806  
302-475-1640

PROJECT NUMBER 94157  
DRG. NO. 3 OF 14  
**A-3**  
SCALE: 1/8" = 1'-0" U.N.D.  
DATE: 11/14/95



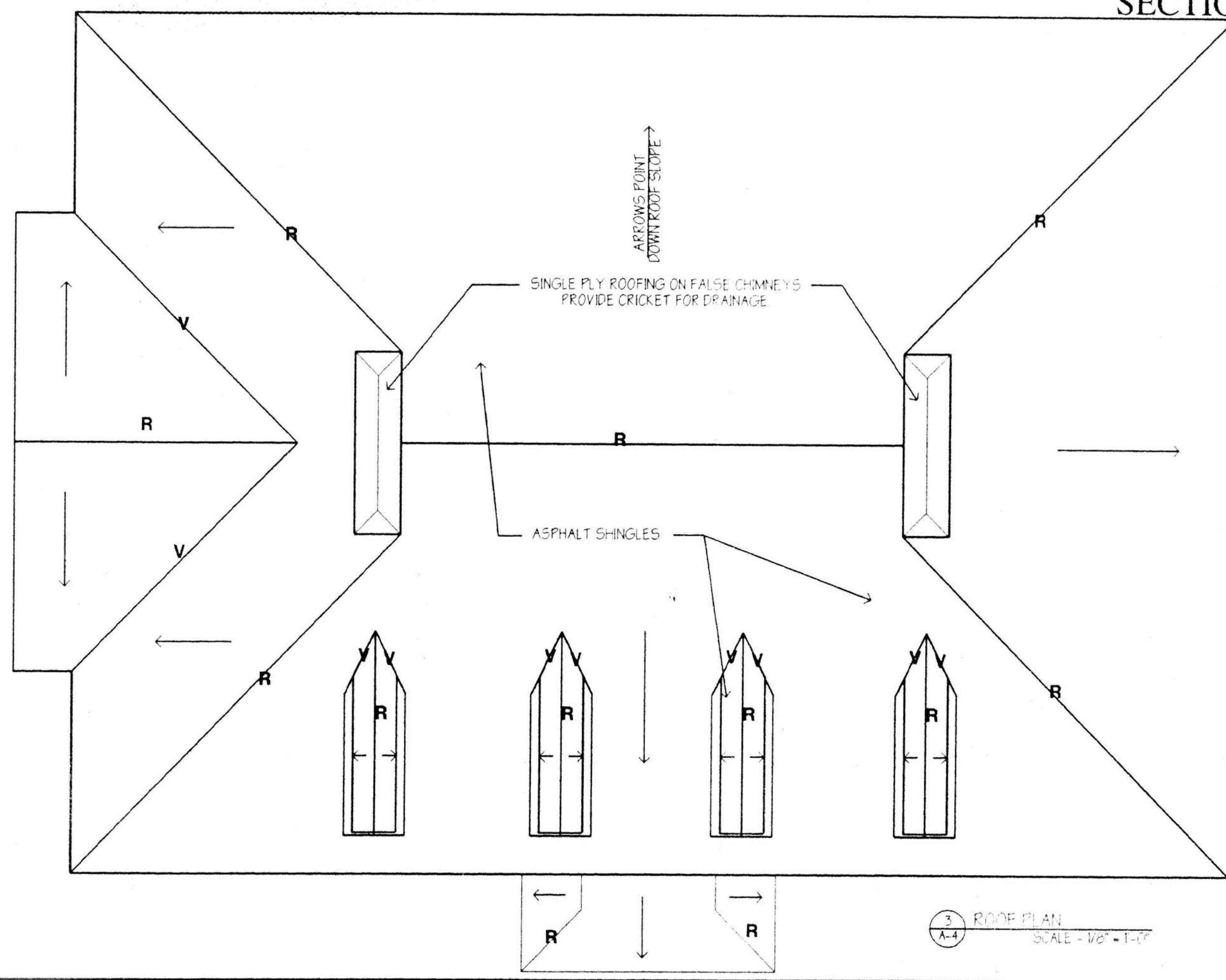
1 BUILDING CROSS SECTION  
SCALE - 1/4" = 1'-0"



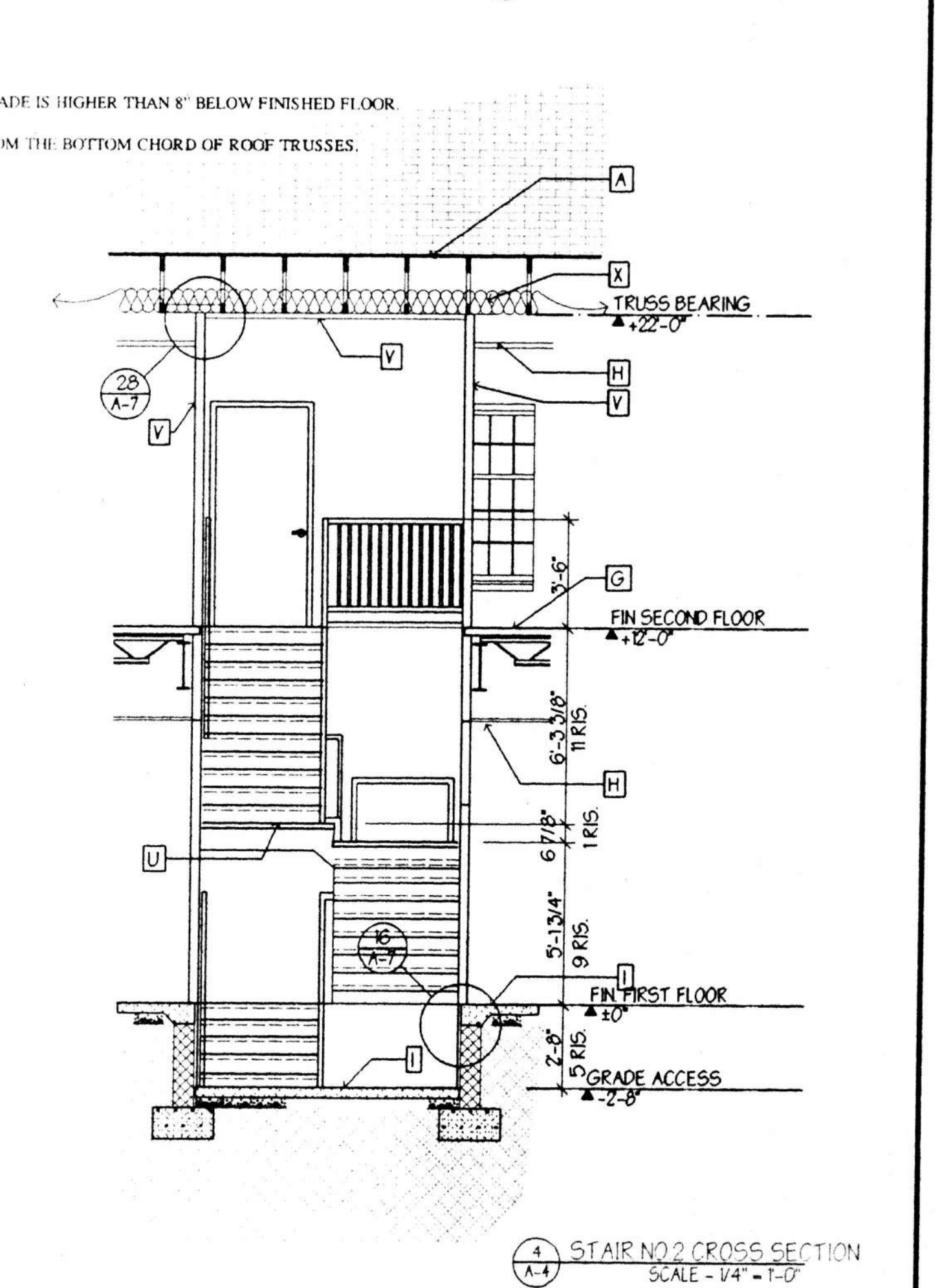
2 STAIR NO. 1 CROSS SECTION  
SCALE - 1/4" = 1'-0"

**SECTION NOTES**

- A ASPHALT ROOF SHINGLES OVER 15# BUILDING PAPER, 5/8" EXTERIOR GRADE PLYWOOD (PROVIDE CLIPS) OVER PREFAB ROOF TRUSSES AT 2'-0" O.C. DESIGN BY MANUFACTURER.
- B ALUMINUM SOFFIT AND FASCIA OVER WOOD FRAMING. PROVIDE 6" ALUMINUM "K" GUTTER AND DOWNSPOUTS.
- C 12" "EYFON" DENTIL MOULDING.
- D WOOD WINDOW AND ENTRANCE. SEE PLAN FOR SIZE AND TYPE. WINDOWS IN AND ABOVE ENTRY VESTIBULE ARE TO BE FIXED. ALL OTHERS TO BE DOUBLE HUNG. PROVIDE SHOW SILL AND APRON.
- E ROWLOCK SILL.
- F 2 1/2" FACE BRICK WITH AIR SPACE, 2 PIECE "DUR-O-WAL" BRICK TIES, @ 16" O.C. HORIZ. AND VERT., 15# BUILDING PAPER, 1/2" EXTERIOR GRADE GYPSUM WALL BOARD, 4" METAL STUDS, 3 1/2" BATT INSULATION, VAPOR BARRIER, AND 1/2" GYPSUM WALL BOARD PAINTED.
- G 3" CONCRETE SLAB OVER 1 1/2" METAL DECK, AND STEEL STRUCTURE. PROVIDE POUR STOP AROUND PERIMETER OF FLOOR AND AT ALL FRAMED OPENINGS.
- H 2X4 ACOUSTIC TILE CEILING AND GRID.
- I 4" CONCRETE SLAB OVER 6 X 6 10/10 W.W.F. AND 4" CRUSHED STONE BASE.
- J CONCRETE MASONRY UNIT FOUNDATION WALL WITH "DUR-O-WAL" REINFORCING. SEE STRUCTURAL DRAWINGS OVER REINFORCED CONCRETE FOOTING. PROVIDE 2" RIGID INSULATION FROM TOP OF FOOTING TO UNDERSIDE OF SLAB.
- K 4" CONCRETE SLAB TURN DOWN PERIMETER 3'-0"
- L DECORATIVE WOOD (COLUMN, DORIC ORDER. (2 PIECES AT STEEL COLUMN LOCATIONS)
- M P.V.C. FLASHING WITH GROUT BEHIND AT LOCATIONS WHERE GRADE IS HIGHER THAN FINISHED FLOOR. PROVIDE WEEP HOLES 8" ABOVE GRADE AT 2'-0" ON CENTER AROUND ENTIRE PERIMETER OF BUILDING. GROUT AIRSPACE SOLID WHEN GRADE IS HIGHER THAN 8" BELOW FINISHED FLOOR.
- N P.V.C. FLASHING AT WINDOW HEADS. PROVIDE WEEP AT 2'-0" ON CENTER.
- O 3 COATS STUCCO OVER SELF FURRING LATH, 15# BUILDING PAPER, 1/2" EXTERIOR GRADE PLYWOOD, AND STUD FRAMING.
- P SHOW RAFTER AT PEAK ROOF.
- Q DRYWALL SOFFIT AT PERIMETER STEEL FRAMING ON SECOND FLOOR. FRAME OVER 2 METAL STUDS AT 16" O.C.
- R DRYWALL CEILING OVER 1 1/2" FURRING AND 3 1/2" STUDS.
- S ELEVATOR SHAFT AND PIT WALLS TO BE CONCRETE MASONRY UNIT. SEE STRUCTURAL DRAWINGS FOR DETAILS.
- T ALUMINUM STEP FLASHING.
- U STEEL STAIR WITH 2" CONCRETE PAN RISER AND LANDINGS. SEE STAIR DETAILS.
- V 3 5/8" METAL STUDS WITH 2 LAYERS OF 1/2" FIRECODE "C" DRYWALL, BOTH SIDES. PROVIDE 1 1/2" HAT CHANNEL FRAMING FOR CEILING. ATTACH TO BOTTOM OF TRUSSES.
- W SHEET WATER PROOFING WHEN GRADE IS HIGHER THAN 8" BELOW FINISHED FLOOR.
- X 9" BATT INSULATION. SUSPEND FROM THE BOTTOM CHORD OF ROOF TRUSSES.



3 ROOF PLAN  
SCALE - 1/2" = 1'-0"



4 STAIR NO. 2 CROSS SECTION  
SCALE - 1/4" = 1'-0"

PROJECT: VISITING NURSES ASSOCIATION OF POTTSTOWN & VICINITY  
1963 E. HIGH STREET  
POTTSTOWN, PA  
LOWER POTTSGROVE TOWNSHIP, MONTGOMERY COUNTY, PA

DRAWING: BUILDING SECTION, ROOF PLAN, STAIR SECTIONS

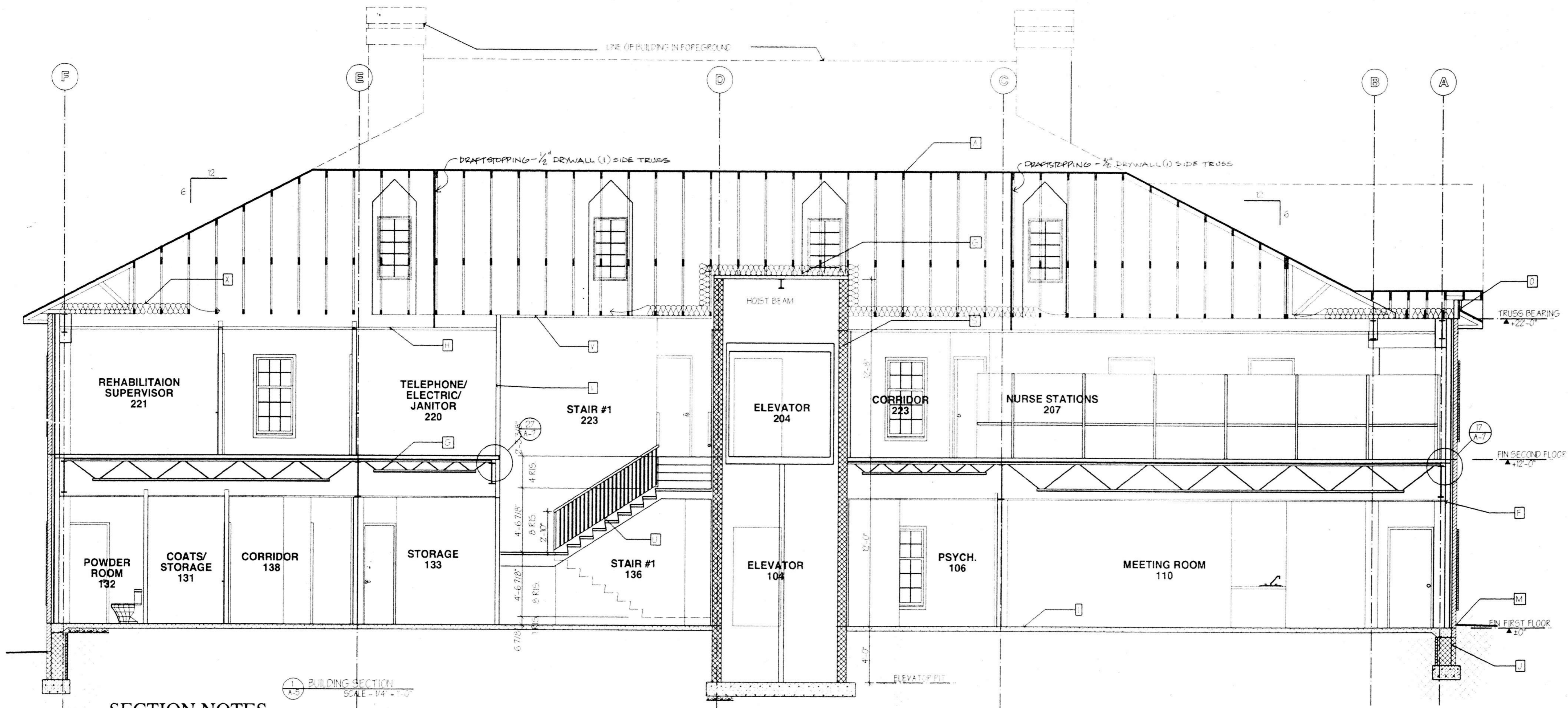
ARCHITECTURAL ALLIANCE  
ARCHITECTURE • PLANNING • INTERIOR DESIGN • GRAPHIC ARTS  
SUITE 603  
1800 PENNSYLVANIA AVENUE  
MALVERN, PA 19355  
TEL: 610-660-9000  
FAX: 610-660-9000

PROJECT NUMBER 94157  
DRG. NO. 4 OF 14

**A-4**  
SCALE: 1/4" = 1'-0" U.N.D.  
DATE: 11/14/95

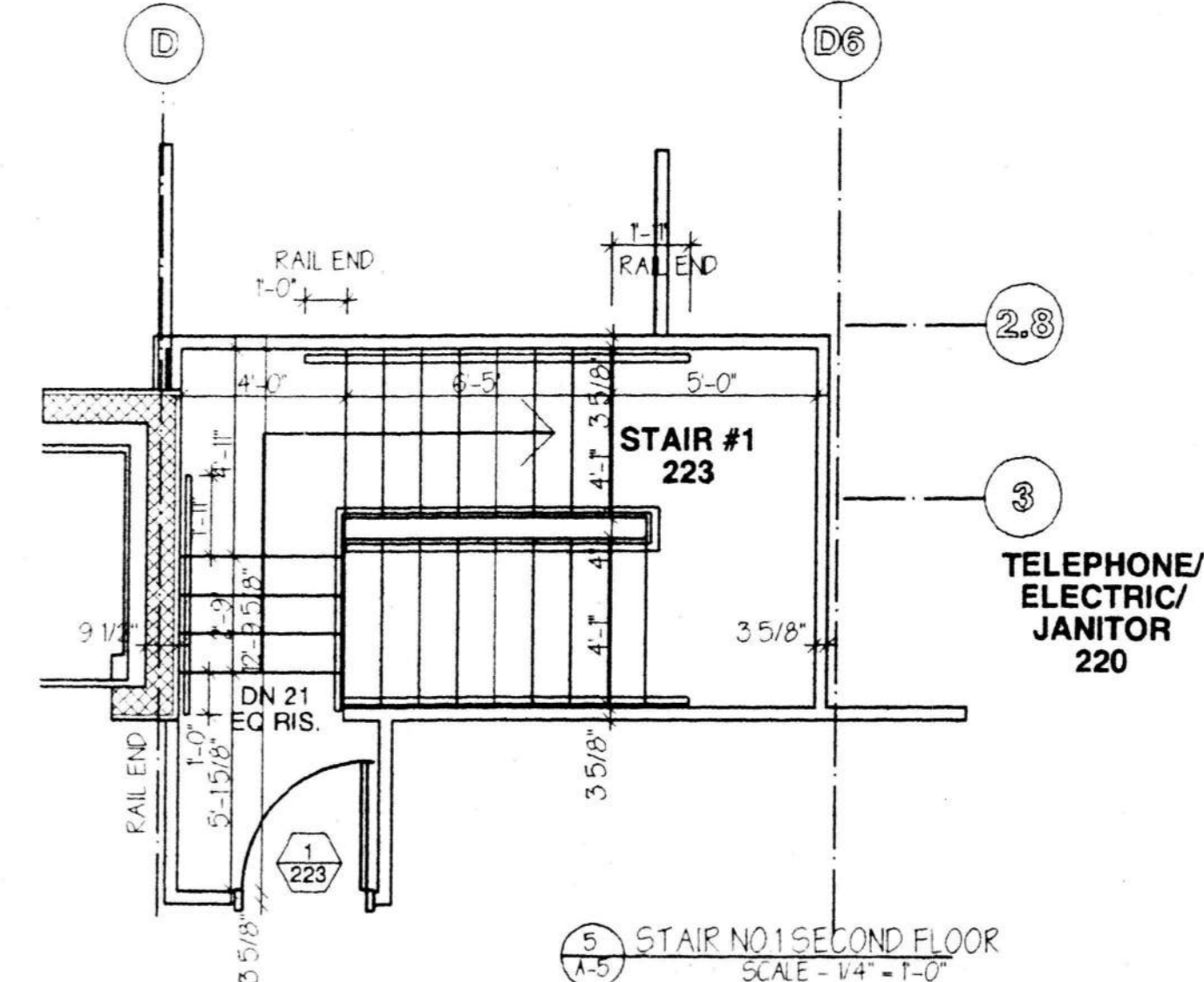
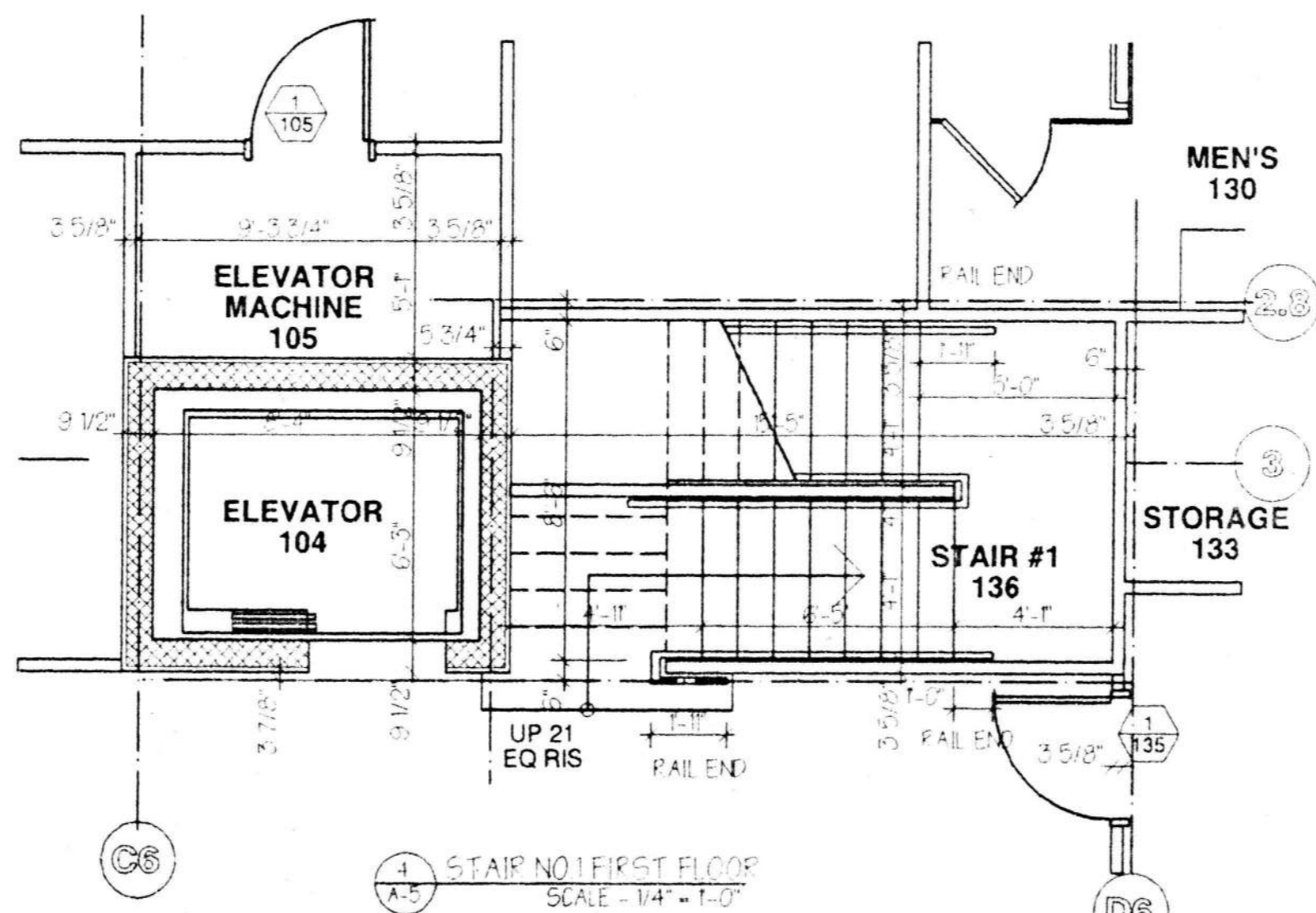
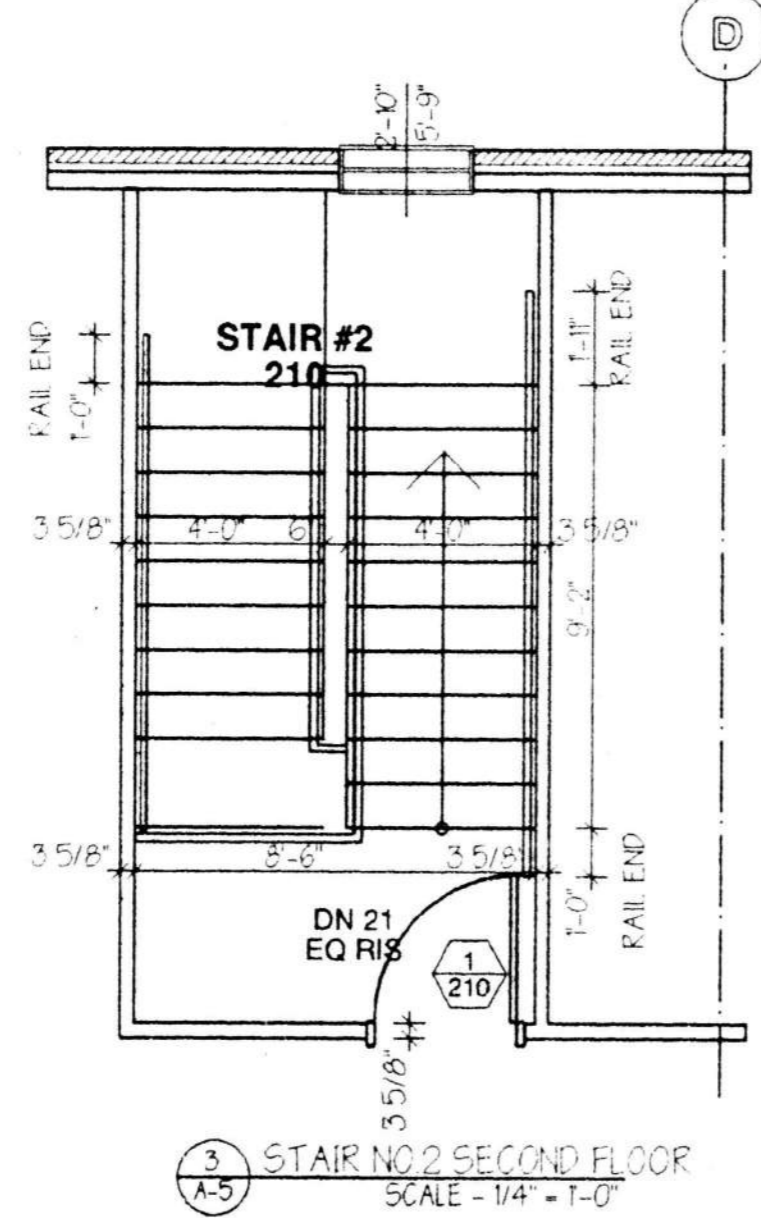
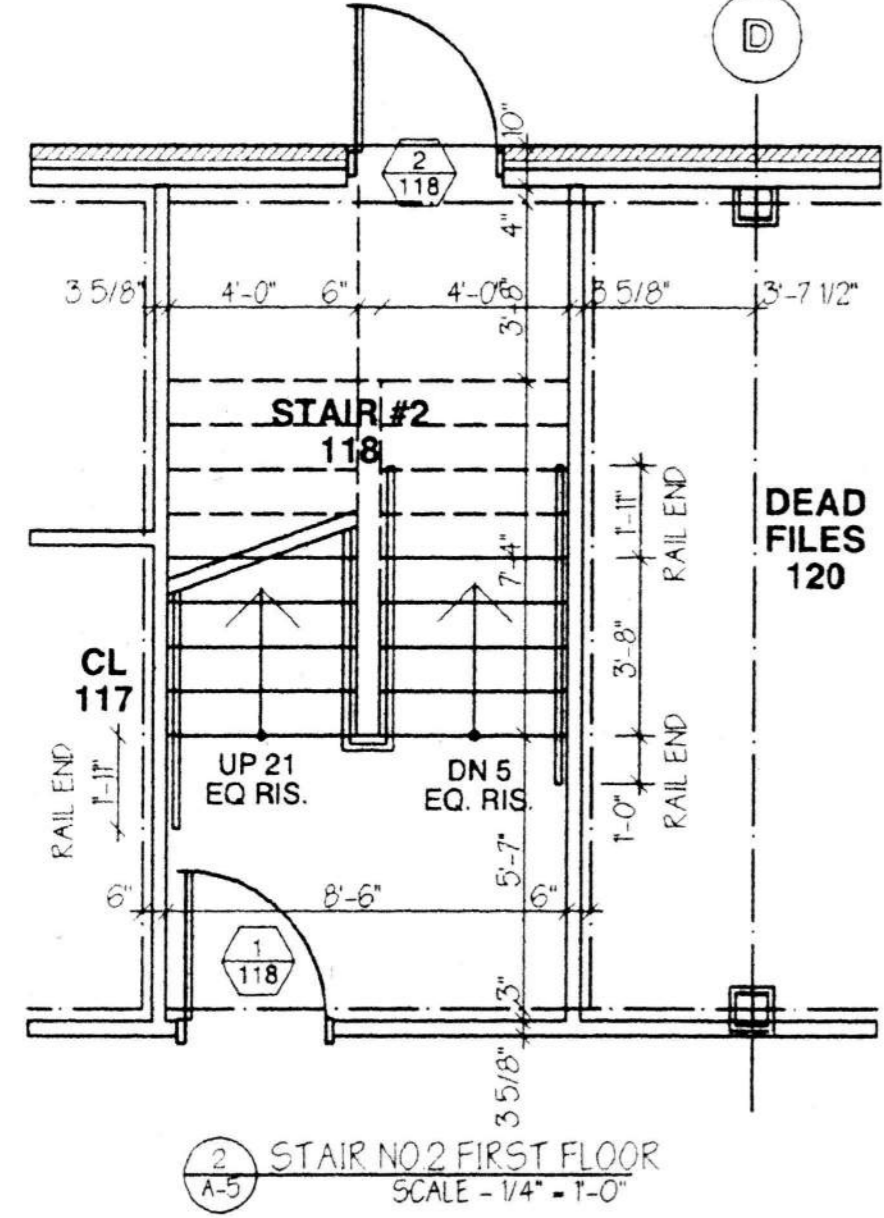
DRAWN BY \_\_\_\_\_  
CHECKED BY \_\_\_\_\_

REVISIONS



**SECTION NOTES**

- |   |  |  |  |
|---|--|--|--|
| <p>A ASPHALT ROOF SHINGLES OVER 15# BUILDING PAPER. 5/8" EXTERIOR GRADE PLYWOOD (PROVIDE CLIPS) OVER PREFAB ROOF TRUSSES AT 2'-0" O.C. DESIGN BY MANUFACTURER.</p> <p>B ALUMINUM SOFFIT AND FASCIA OVER WOOD FRAMING. PROVIDE 6" ALUMINUM "K" GUTTER AND DOWNSPOUTS.</p> <p>C 12" "FYRON" DENTIL MOULDING.</p> <p>D WOOD WINDOW AND ENTRANCE. SEE PLAN FOR SIZE AND TYPE. WINDOWS IN AND ABOVE ENTRY VESTIBULE ARE TO BE FIXED. ALL OTHERS TO BE DOUBLE HUNG. PROVIDE SHOW SILL AND APRON.</p> <p>E ROWLOCK SILL.</p> <p>F 2-4" FACE BRICK WITH AIR SPACE. 2 PIECE "DUR-O-WAL" BRICK TIES, @ 16" O.C. HORIZ. AND VERT., 15# BUILDING PAPER, 1/2" EXTERIOR GRADE GYPSUM WALL BOARD, 4" METAL STUDS, 3 1/2" BATT INSULATION, VAPOR BARRIER, AND 1/2" GYPSUM WALL BOARD PAINTED.</p> | <p>G 3" CONCRETE SLAB OVER 1 1/2" METAL DECK, AND STEEL STRUCTURE. PROVIDE POUR STOP AROUND PERIMETER OF FLOOR AND AT ALL FRAMED OPENINGS.</p> <p>H 2X4 ACOUSTIC TILE CEILING AND GRID.</p> <p>I 4" CONCRETE SLAB OVER 6 X 6 10/10 W.W.F. AND 4" CRUSHED STONE BASE.</p> <p>J CONCRETE MASONRY UNIT FOUNDATION WALL WITH "DUR-O-WAL" REINFORCING. SEE STRUCTURAL DRAWINGS OVER REINFORCED CONCRETE FOOTING. PROVIDE 2" RIGID INSULATION FROM TOP OF FOOTING TO UNDERSIDE OF SLAB.</p> <p>K 4" CONCRETE SLAB TURN DOWN PERIMETER 3'-0".</p> <p>L DECORATIVE WOOD COLUMN, DORIC ORDER. (2 PIECES AT STEEL COLUMN LOCATIONS)</p> <p>M P.V.C. FLASHING WITH GROUT BEHIND AT LOCATIONS WHERE GRADE IS HIGHER THAN FINISHED FLOOR. PROVIDE WEEP HOLES 8" ABOVE GRADE AT 2'-0" ON CENTER AROUND ENTIRE PERIMETER OF BUILDING. GROUT AIRSPACE SOLID WHEN GRADE IS HIGHER THAN 8" BELOW FINISHED FLOOR.</p> | <p>N P.V.C. FLASHING AT WINDOW HEADS. PROVIDE WEEP AT 2'-0" ON CENTER.</p> <p>O 3 COATS STUCCO OVER SELF-FURRING LATH, 15# BUILDING PAPER, 1/2" EXTERIOR GRADE PLYWOOD, AND STUD FRAMING.</p> <p>P SHOW RAFTER AT PENT ROOF.</p> <p>Q DRYWALL SOFFIT AT PERIMETER STEEL FRAMING ON SECOND FLOOR. FRAME OVER 2 METAL STUDS AT 16" O.C.</p> <p>R DRYWALL CEILING OVER 1 1/2" FURRING AND 3 1/2" STUDS.</p> <p>S ELEVATOR SHAFT AND PIT WALLS TO BE CONCRETE MASONRY UNIT. SEE STRUCTURAL DRAWINGS FOR DETAILS.</p> <p>T ALUMINUM STEP FLASHING.</p> <p>U STEEL STAIR WITH 2" CONCRETE PAN RISER AND LANDINGS. SEE STAIR DETAILS.</p> <p>V 3 5/8" METAL STUDS WITH 2 LAYERS OF 1/2" FIRECODE "C" DRYWALL. BOTH SIDES PROVIDE 1 1/2" HAT CHANNEL FRAMING FOR CEILING. ATTACH TO BOTTOM OF TRUSSES.</p> | <p>W SHEET WATER PROOFING WHEN GRADE IS HIGHER THAN 8" BELOW FINISHED FLOOR.</p> <p>X 9" BATT INSULATION. SUSPEND FROM THE BOTTOM CHORD OF ROOF TRUSSES.</p> |
|---|--|--|--|



PROJECT: VISITING NURSES ASSOCIATION OF POTTSTOWN & VICINITY  
1963 E. HIGH STREET  
POTTSTOWN, PA

LOWER POTTSGROVE TOWNSHIP, MONTGOMERY COUNTY, PA

DRAWING: BUILDING SECTION, STAIR PLANS

REVISIONS: \_\_\_\_\_

DRAWN BY: \_\_\_\_\_

CHECKED BY: \_\_\_\_\_

ARCHITECTURE - PLANNING - INTERIOR DESIGN - GRAPHIC ARTS

**ARCHITECTURAL ALLIANCE**

SUITE 603  
1800 PENNSYLVANIA AVENUE  
MALVERN, PA 19355  
PH: 610-440-8000  
FAX: 610-440-4800

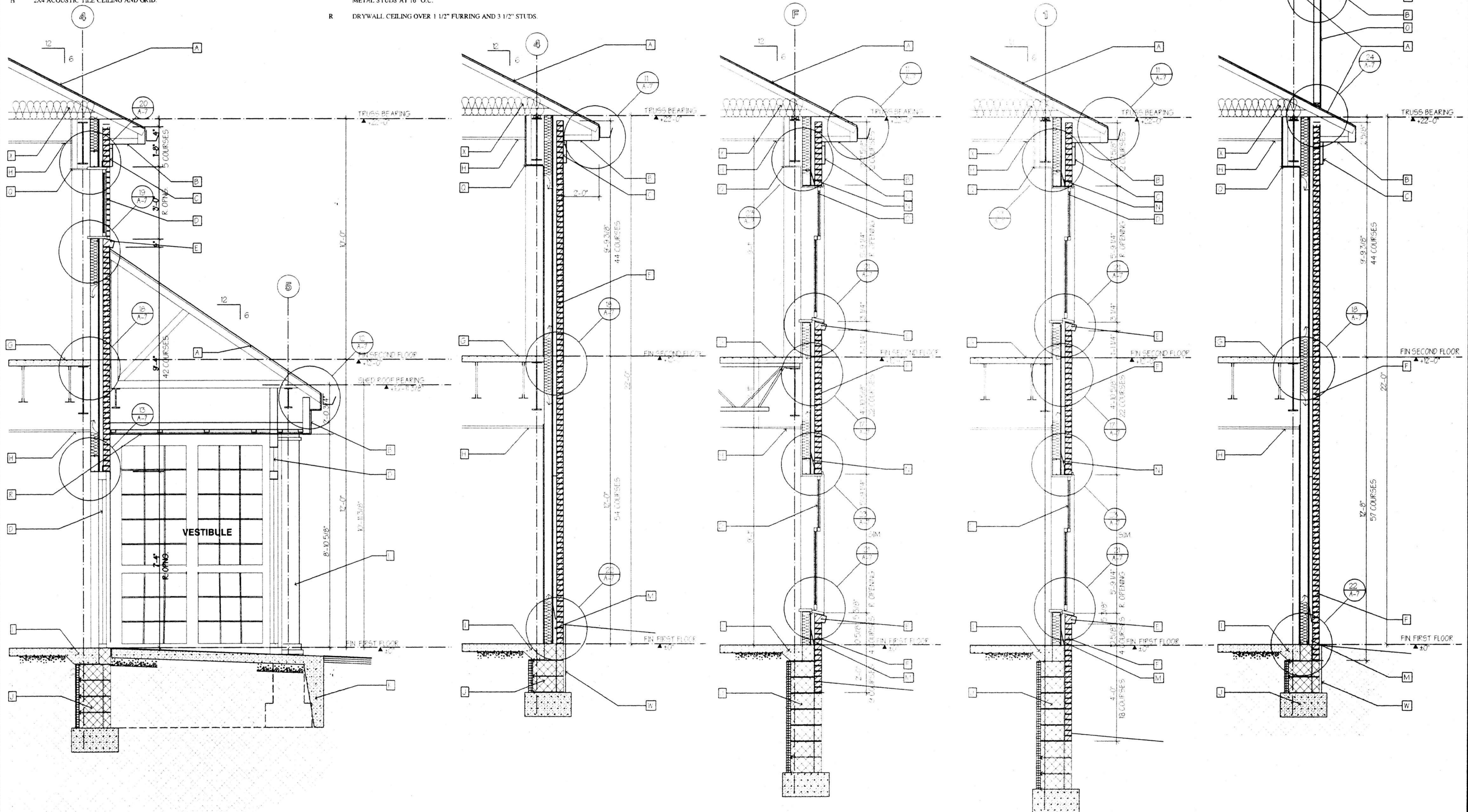
PROJECT NUMBER 94157  
DRG. NO. 5 OF 14

**A-5**

SCALE: 1/4" = 1'-0"  
DATE: 11/14/85

# WALL SECTION NOTES

- A ASPHALT ROOF SHINGLES OVER 15# BUILDING PAPER, 5/8" EXTERIOR GRADE PLYWOOD (PROVIDE CLIPS) OVER PREFAB ROOF TRUSSES AT 2'-0" O.C. DESIGN BY MANUFACTURER.
- B ALUMINUM SOFFIT AND FASCIA OVER WOOD FRAMING. PROVIDE 6" ALUMINUM "K" GUTTER AND DOWNSPOUTS.
- C 12" "FYFON" DENTIL MOULDING.
- D WOOD WINDOW AND ENTRANCE. SEE PLAN FOR SIZE AND TYPE. WINDOWS IN AND ABOVE ENTRY VESTIBULE ARE TO BE FIXED. ALL OTHERS TO BE DOUBLE HUNG. PROVIDE SHOW SILL AND APRON.
- E ROWLOCK SILL.
- F 2 1/4" FACE BRICK, WITH AIR SPACE, 2 PIECE "DUR-O-WAL" BRICK TIES, @ 16" O.C. HORIZ. AND VERT., 15# BUILDING PAPER, 1/2" EXTERIOR GRADE GYPSUM WALL BOARD, 4" METAL STUDS, 3 1/2" BATT INSULATION, VAPOR BARRIER, AND 1/2" GYPSUM WALL BOARD PAINTED.
- G 3" CONCRETE SLAB OVER 1 1/2" METAL DECK, AND STEEL STRUCTURE. PROVIDE POUR STOP AROUND PERIMETER OF FLOOR AND AT ALL FRAMED OPENINGS.
- H 2X4 ACOUSTIC TILE CEILING AND GRID.
- I 4" CONCRETE SLAB OVER 6 X 6 10/10 W.W.F. AND 4" CRUSHED STONE BASE.
- J CONCRETE MASONRY UNIT FOUNDATION WALL WITH "DUR-O-WAL" REINFORCING. SEE STRUCTURAL DRAWINGS OVER REINFORCED CONCRETE FOOTING. PROVIDE 2" RIGID INSULATION FROM TOP OF FOOTING TO UNDERSIDE OF SLAB.
- K 4" CONCRETE SLAB TURN DOWN PERIMETER 3'-0".
- L DECORATIVE WOOD COLUMN, DORIC ORDER. (2 PIECES AT STEEL COLUMN LOCATIONS).
- M P.V.C. FLASHING WITH GROUT BEHIND AT LOCATIONS WHERE GRADE IS HIGHER THAN FINISHED FLOOR. PROVIDE WEEP HOLES 8" ABOVE GRADE AT 2'-0" ON CENTER AROUND ENTIRE PERIMETER OF BUILDING. GROUT AIRSPACE SOLID WHEN GRADE IS HIGHER THAN 8" BELOW FINISHED FLOOR.
- N P.V.C. FLASHING AT WINDOW HEADS. PROVIDE WEEP AT 2'-0" ON CENTER.
- O 3 COATS STUCCO OVER SELF FURRING LATH, 15# BUILDING PAPER, 1/2" EXTERIOR GRADE PLYWOOD, AND STUD FRAMING.
- P SHOW RAFTER AT PENT ROOF.
- Q DRYWALL SOFFIT AT PERIMETER STEEL FRAMING ON SECOND FLOOR. FRAME OVER 2 METAL STUDS AT 16" O.C.
- R DRYWALL CEILING OVER 1 1/2" FURRING AND 3 1/2" STUDS.
- S ELEVATOR SHAFT AND PIT WALLS TO BE CONCRETE MASONRY UNIT. SEE STRUCTURAL DRAWINGS FOR DETAILS.
- T ALUMINUM STEP FLASHING.
- U STEEL STAIR WITH 2" CONCRETE PAN RISER AND LANDINGS. SEE STAIR DETAILS.
- V 3 5/8" METAL STUDS WITH 2 LAYERS OF 1/2" FIRECODE "C" DRYWALL, BOTH SIDES. PROVIDE 1 1/2" HAT CHANNEL FRAMING FOR CEILING. ATTACH TO BOTTOM OF TRUSSES.
- W SHEET WATER PROOFING WHEN GRADE IS HIGHER THAN 8" BELOW FINISHED FLOOR.
- X 9" BATT INSULATION. SUSPEND FROM THE BOTTOM CHORD OF ROOF TRUSSES.



1 SECTION AT VESTIBULE  
SCALE - 1/2" = 1'-0"

2 SECTION WITH GRADE HIGHER THAN FIN FLOOR  
SCALE - 1/2" = 1'-0"

3 SECTION AT WINDOWS  
SCALE - 1/2" = 1'-0"

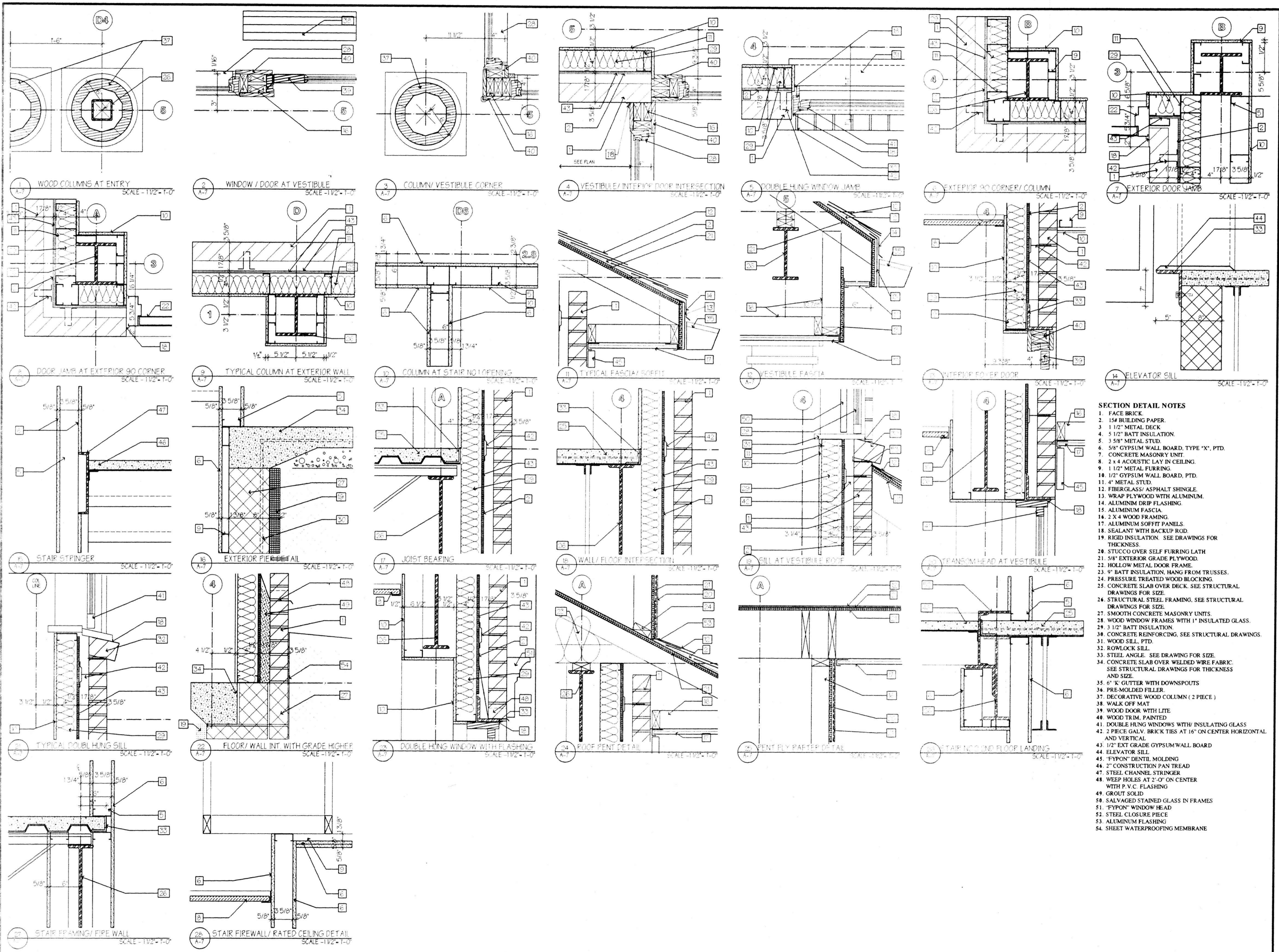
4 SECTION AT WINDOWS  
SCALE - 1/2" = 1'-0"

5 SECTION AT ENDWALL PENT ROOF  
SCALE - 1/2" = 1'-0"

REVISIONS	DRAWN BY	CHECKED BY

PROJECT: VISITING NURSES ASSOCIATION OF POTTSTOWN & VICINITY  
1963 E. HIGH STREET  
POTTSTOWN, PA  
LOWER POTTSGROVE TOWNSHIP, MONTGOMERY COUNTY, PA  
DRAWING WALL SECTIONS

**ARCHITECTURAL ALLIANCE**  
ARCHITECTURE • PLANNING • INTERIOR DESIGN • GRAPHIC ARTS  
SUITE 608  
1800 PENNSYLVANIA BLVD.  
WILMINGTON, DE 19806  
302-429-4840



- SECTION DETAIL NOTES**
- FACE BRICK
  - 1/4" BUILDING PAPER
  - 1 1/2" METAL DECK
  - 5 1/2" BATT INSULATION
  - 3 5/8" METAL STUD
  - 5/8" GYPSUM WALL BOARD, TYPE "X", PTD.
  - CONCRETE MASONRY UNIT
  - 2 x 4 ACOUSTIC LAY IN CEILING
  - 1 1/2" METAL FURRING
  - 1/2" GYPSUM WALL BOARD, PTD.
  - 4" METAL STUD
  - FIBERGLASS ASPHALT SHINGLE
  - WRAP PLYWOOD WITH ALUMINUM
  - ALUMINUM DRIP FLASHING
  - ALUMINUM FASCIA
  - 2 X 4 WOOD FRAMING
  - ALUMINUM SOFFIT PANELS
  - SEALANT WITH BACKUP ROD
  - RIGID INSULATION. SEE DRAWINGS FOR THICKNESS
  - STUCCO OVER SELF FURRING LATH
  - 5/8" EXTERIOR GRADE PLYWOOD
  - HOLLOW METAL DOOR FRAME
  - 9" BATT INSULATION, HANG FROM TRUSSES
  - PRESSURE TREATED WOOD BLOCKING
  - CONCRETE SLAB OVER DECK. SEE STRUCTURAL DRAWINGS FOR SIZE
  - STRUCTURAL STEEL FRAMING. SEE STRUCTURAL DRAWINGS FOR SIZE
  - SMOOTH CONCRETE MASONRY UNITS
  - WOOD WINDOW FRAMES WITH 1" INSULATED GLASS
  - 3 1/2" BATT INSULATION
  - CONCRETE REINFORCING. SEE STRUCTURAL DRAWINGS
  - WOOD SILL, PTD.
  - ROWLOCK SILL
  - STEEL ANGLE. SEE DRAWING FOR SIZE
  - CONCRETE SLAB OVER WELDED WIRE FABRIC. SEE STRUCTURAL DRAWINGS FOR THICKNESS AND SIZE
  - 6" K GUTTER WITH DOWNSPOUTS
  - PRE-MOLDED FILLER
  - DECORATIVE WOOD COLUMN (2 PIECE)
  - WALK OFF MAT
  - WOOD DOOR WITH LITE
  - WOOD TRIM, PAINTED
  - DOUBLE HUNG WINDOWS WITH INSULATING GLASS
  - 2 PIECE GALV. BRICK TIES AT 16" ON CENTER HORIZONTAL AND VERTICAL
  - 1/2" EXT GRADE GYPSUM WALL BOARD
  - ELEVATOR SILL
  - "FYRON" DENTIL MOLDING
  - 2" CONSTRUCTION PAN TREAD
  - STEEL CHANNEL STRINGER
  - WEEP HOLES AT 2'-0" ON CENTER WITH P.V.C. FLASHING
  - GROUT SOLID
  - SALVAGED STAINED GLASS IN FRAMES
  - "FYRON" WINDOW HEAD
  - STEEL CLOSURE PIECE
  - ALUMINUM FLASHING
  - SHEET WATERPROOFING MEMBRANE

**ARCHITECTURAL ALLIANCE**

ARCHITECTURE • PLANNING • INTERIOR DESIGN • GRAPHIC ARTS

SUITE 603  
1800 PENNSYLVANIA AVENUE  
GOLDEN, CO. 80401  
WILMINGTON, DE 19806  
810-640-9000

PROJECT: VISITING NURSES ASSOCIATION OF POTTSTOWN & VICINITY  
1963 E. HIGH STREET  
POTTSTOWN, PA

LOWER POTTSGROVE TOWNSHIP, MONTGOMERY COUNTY, PA

DRAWING PLAN AND SECTION DETAILS

PROJECT NUMBER 04157  
DRG. NO. 7 OF 14

A-7

SCALE: 1 1/2" = 1'-0"  
DATE: 11/14/85

DRAWN BY \_\_\_\_\_  
CHECKED BY \_\_\_\_\_

REVISIONS \_\_\_\_\_

