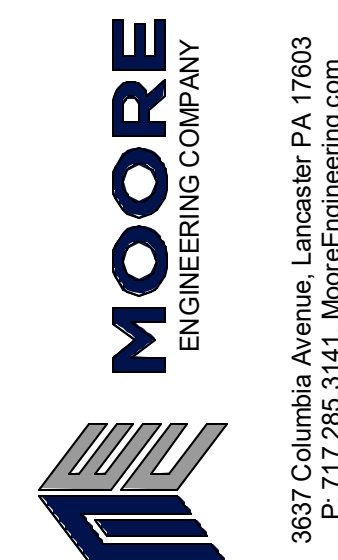


**SEAL:**

THIS DRAWING IS THE PROPERTY OF THE ARCHITECT AND MAY NOT BE PRODUCED IN ANY FORM OR BY ANY MEANS, ELECTRONIC OR MECHANICAL, WITHOUT THE WRITTEN PERMISSION OF THE ARCHITECT.



**CONSULTANT:**



RENOVATIONS  
J.P. MCCASKEY STADIUM  
PROJECTS  
SCHOOL DISTRICT OF LANCASTER  
445 N RESERVOIR ST. LANCASTER, PA 17301

[illegible]

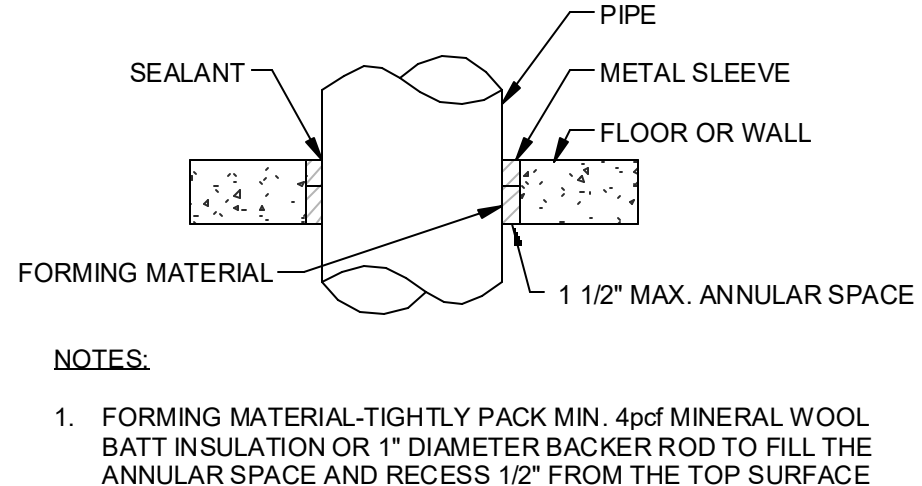
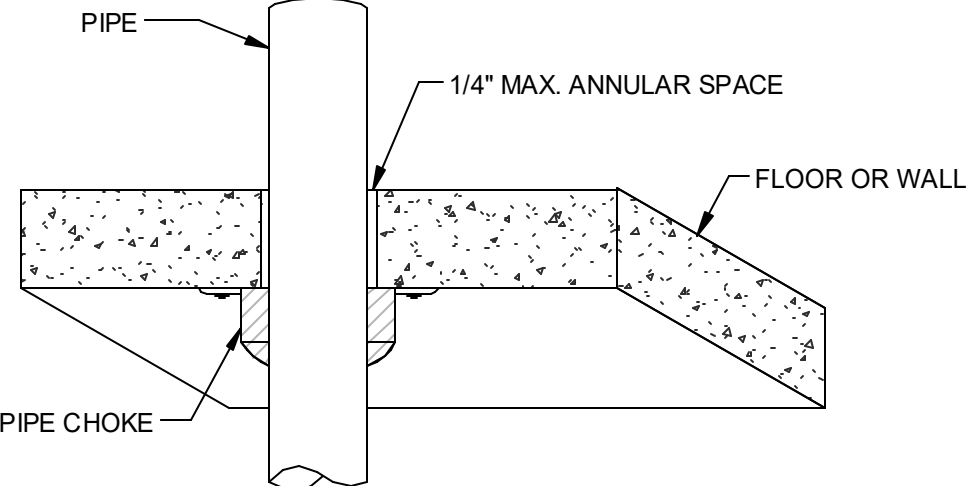
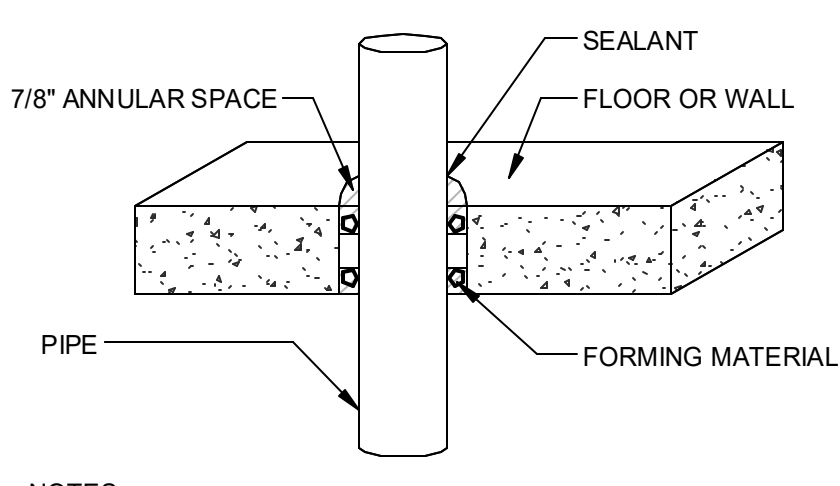
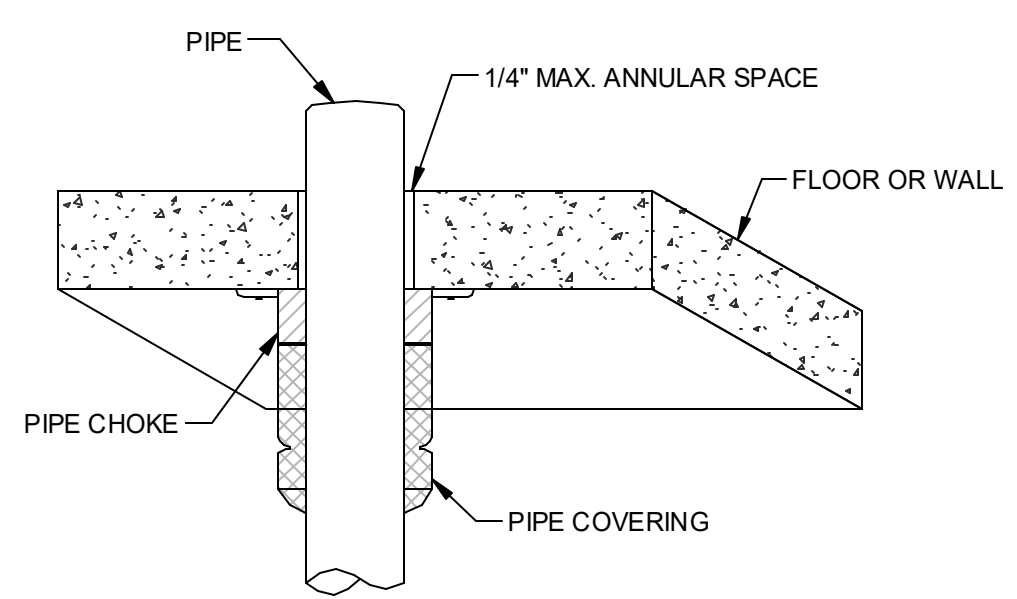
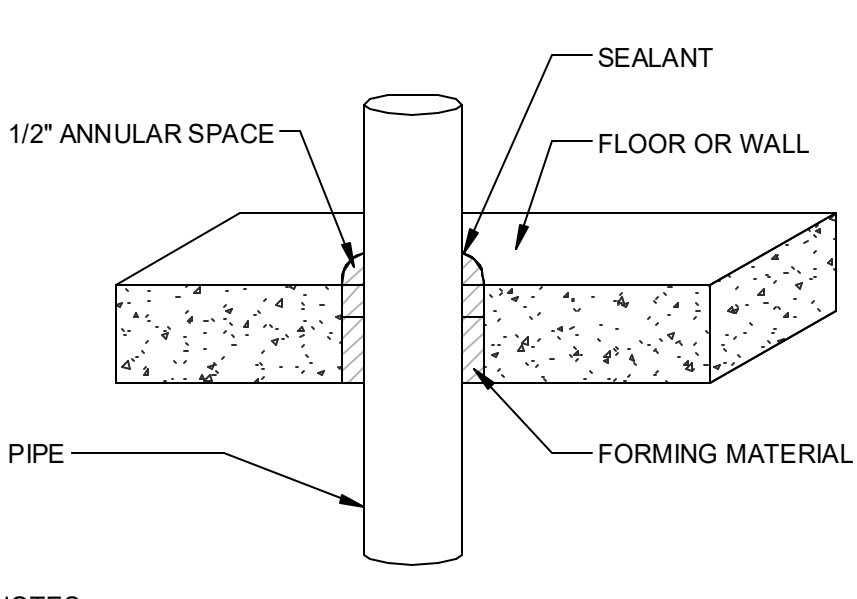
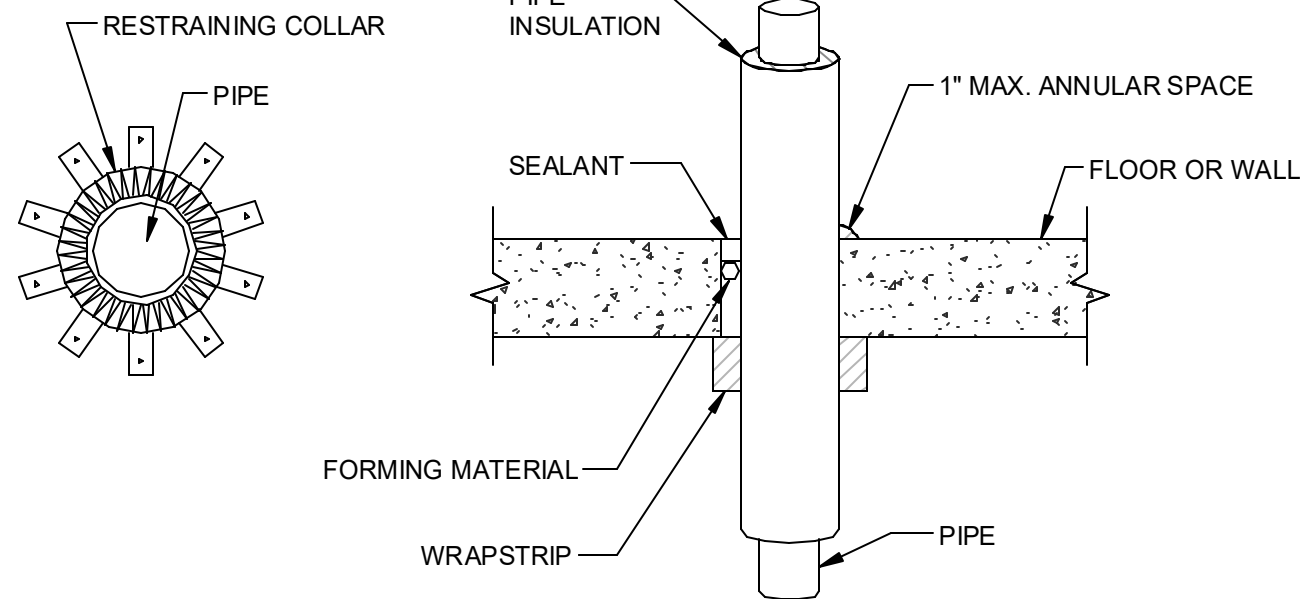
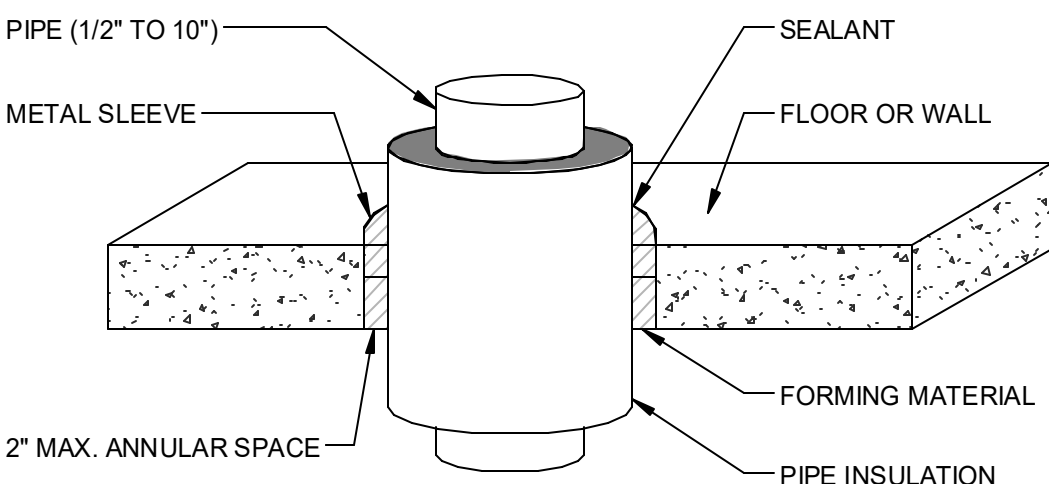
PROJ # : 24-SDL-03      DRAWN BY :  
SHEET TITLE:

## PLUMBING DETAILS

**SHEET NUMBER:**

## P4.1

**CONFORMED SET**





3/5/2025 2:18:21 PM

ISSUE DATES  
DATE: 03/05/2025

DESCRIPTION:  
CONFORMED SET

PROJ # : 24-SBL-03

DRAWN BY : Author

SHEET TITLE:

CONCESSION STAND  
PLANS - PLUMBING

SHEET NUMBER:

P5.1

RENOVATIONS  
J.P. MCCASKEY STADIUM  
PROJECTS  
SCHOOL DISTRICT OF LANCASTER  
445 N RESERVOIR ST, LANCASTER, PA 17602

CONSULTANT:



**MOORE**  
ENGINEERING COMPANY

9637 Columbia Avenue, Lancaster PA 17603  
P: 717.285.3141, mooreengineering.com



**School District  
of Lancaster**  
*Together We Can!*

SEAL:

THIS DRAWING IS THE PROPERTY OF THE  
FIRM AND IS NOT TO BE REPRODUCED OR  
USED IN ANY FORM WITHOUT WRITTEN PERMISSION



**MAROTTA/MAIN**  
ARCHITECTS

WWW.MAROTTAMAIN.COM

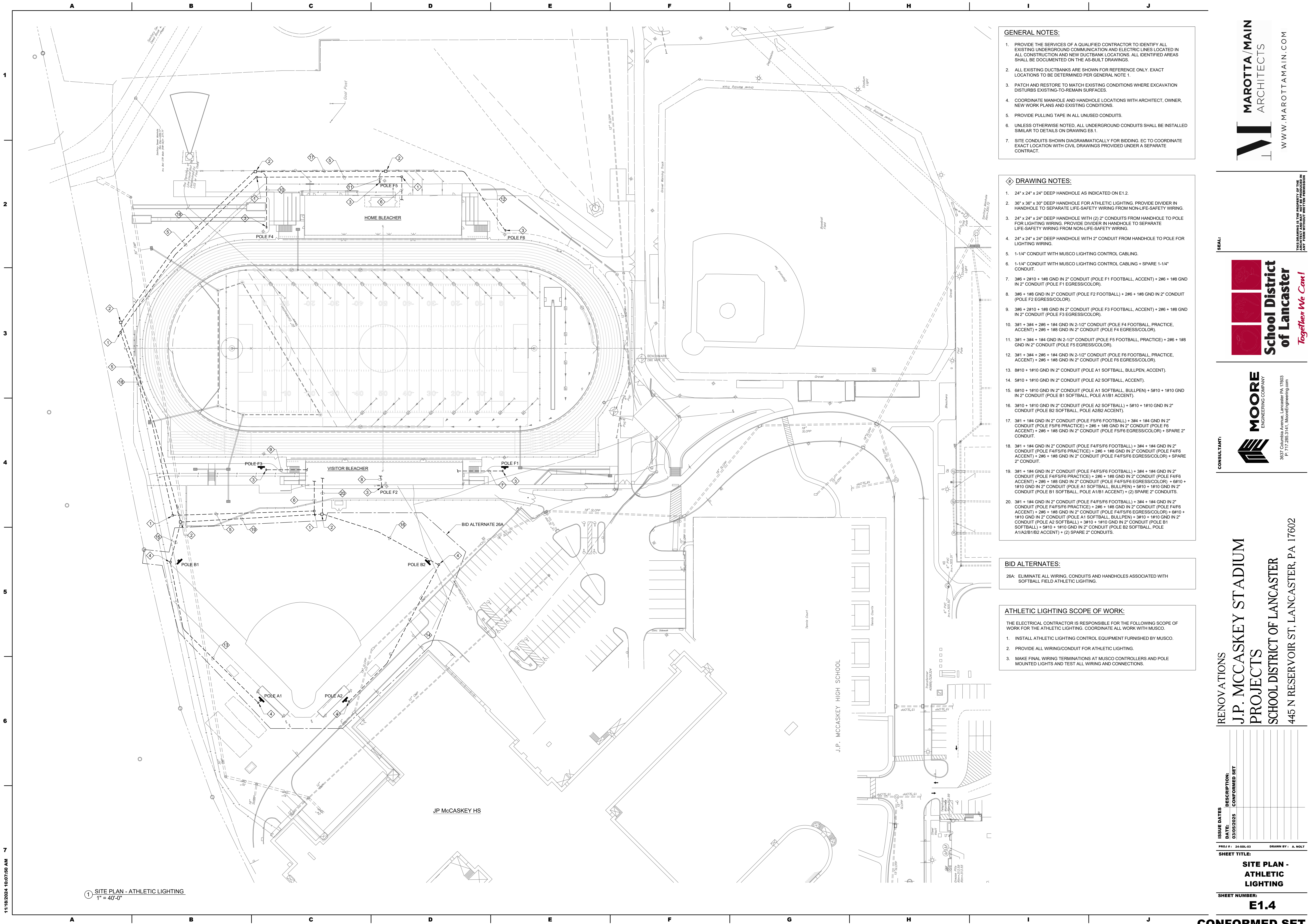
3/5/2025 2:20:10 PM

A	B	C	D	E	F	G	H	I	J
RECEPTACLES/FLOORBOXES/POWER POLES		INTERCOM/MASTER CLOCK/SOUND SYSTEMS		LIGHTING		FIRE ALARM			
SYMBOL	DESCRIPTION	SYMBOL	DESCRIPTION	SYMBOL	DESCRIPTION	SYMBOL	DESCRIPTION		
	120V DUPLEX RECEPTACLE		1 MICROPHONE INLET		LUMINAIRE - CEILING MOUNTED		PHOTOELECTRIC SMOKE DETECTOR - CEILING MOUNTED		
	120V DUPLEX RECEPTACLE - CEILING MOUNTED		MICROPHONE INLETS ON ONE PLATE (QUANTITY AS INDICATED)		LUMINAIRE - CEILING MOUNTED - NORMAL & EMERGENCY CIRCUITS		HEAT DETECTOR		
	120V QUAD RECEPTACLE		CEILING MOUNTED HANGING MICROPHONE INLET		LUMINAIRE - CEILING MOUNTED - EMERGENCY ONLY		HIGH HEAT DETECTOR - CEILING MOUNTED		
	120V QUADUPLEX RECEPTACLE - CEILING MOUNTED		1 FLOOR MOUNTED MICROPHONE INLET		WALL MOUNTED LUMINAIRE		DUCT SMOKE DETECTOR - WITH REMOTE TEST SWITCH		
	120V SIMPLEX RECEPTACLE		FLOOR MOUNTED MICROPHONE INLETS (QUANTITY AS INDICATED)		WALL MOUNTED LUMINAIRE - NORMAL & EMERGENCY CIRCUITS		IONIZATION SMOKE DETECTOR - CEILING MOUNTED		
	120V DUPLEX RECEPTACLE - TOP HALF SWITCHED		AUXILIARY INPUT JACK		FLOOD OR SPOT LUMINAIRE		CARBON DIOXIDE DETECTOR		
	120V DUPLEX RECEPTACLE - CONNECTED TO NORMAL/EMERGENCY POWER		LOCAL SOUND WALL MOUNTED SPEAKER		WALL MOUNTED LUMINAIRE - EMERGENCY ONLY		BEAM DETECTOR		
	120V QUADUPLEX RECEPTACLE - CONNECTED TO NORMAL/EMERGENCY POWER		LOCAL SOUND CEILING MOUNTED SPEAKER		WALL MOUNTED FLOOD OR SPOT LUMINAIRE - EMERGENCY ONLY		CARBON MONOXIDE DETECTOR		
	14-50R RANGE RECEPTACLE WITH MATCHING PLUG AND CORD		PAGING INTERCOM SYSTEM CEILING MOUNTED SPEAKER		REMOTE HEADS - HEADS AS SCHEDULED OR INDICATED		SMOKE/CARBON MONOXIDE DETECTOR		
	14-30R DRYER RECEPTACLE WITH MATCHING PLUG AND CORD		PAGING INTERCOM SYSTEM CEILING MOUNTED SPEAKER, NON IP BASED		EMERGENCY BATTERY UNIT - HEADS AS SCHEDULED OR INDICATED		CEILING MOUNTED FIRE ALARM AUDIO DEVICE (SHADED TRIANGLE INDICATES LOW FREQUENCY 520Hz)		
	SIMPLEX RECEPTACLE WITH NEMA CONFIGURATION AS NOTED		PAGING INTERCOM SYSTEM WALL MOUNTED SPEAKER		CEILING MOUNTED EXIT SIGN - FACES INDICATED BY SHADING		CEILING MOUNTED FIRE ALARM VISUAL DEVICE		
	120V RECEPTACLES CORDREEL HUNG FROM WALL/CEILING UNLESS OTHERWISE NOTED		PAGING INTERCOM SYSTEM WALL MOUNTED SPEAKER, NON IP BASED		CEILING MOUNTED EXIT SIGN - HEADS AS SCHEDULED OR INDICATED		CEILING MOUNTED FIRE ALARM AUDIO/VISUAL DEVICE (SHADED TRIANGLE INDICATES LOW FREQUENCY 520Hz)		
	208V/240V CORDREEL HUNG FROM WALL/CEILING - PROVIDE WITH NEMA RECEPTACLE TO MATCH EQUIPMENT CORD/PLUG		WALL MOUNTED EXTERIOR SPEAKER		WALL MOUNTED EXIT SIGN - FACES INDICATED BY SHADING		CEILING MOUNTED FIRE ALARM AUDIO DEVICE (SHADED TRIANGLE INDICATES LOW FREQUENCY 520Hz)		
	RECESSED MULTI-SERVICE FLOOR BOX/MULTI-SERVICE POKE-THRU FOR MOUNTING DEVICES INDICATED		VOLUME CONTROL		WALL MOUNTED EXIT SIGN - FACES INDICATED BY SHADING		WALL MOUNTED FIRE ALARM VISUAL DEVICE		
	MULTI-SERVICE FLOOR BOX FOR MOUNTING DEVICES INDICATED		MONITOR SPEAKER JACK		WALL MOUNTED BATTERY EXIT SIGN - HEADS AS SCHEDULED OR INDICATED		WALL MOUNTED FIRE ALARM AUDIO/VISUAL DEVICE (SHADED TRIANGLE INDICATES LOW FREQUENCY 520Hz)		
	FLOOR BOX/POKE-THRU FOR FURNITURE FEED		CALL SWITCH		LUMINAIRE		WALL MOUNTED MANUAL PULL STATION		
	PEDESTAL-TYPE FLOOR BOX FOR MOUNTING DEVICES INDICATED		CLOCK/SPEAKER COMBINATION		LUMINAIRE - NORMAL & EMERGENCY CIRCUITS		RELAY AND/OR MONITORING DEVICE AS REQUIRED BY THE APPLICATION REQUIREMENTS		
	RECESSED MULTI-SERVICE FLUSH FLOOR BOX/MULTI-SERVICE POKE-THRU FOR MOUNTING DEVICES INDICATED		WALL CLOCK				KNOX BOX		
	MULTI-SERVICE FLOOR BOX FOR MOUNTING DEVICES INDICATED		DUAL FACE CLOCK				MAGNETIC DOOR HOLDER		
	PEDESTAL-TYPE FLOOR BOX FOR MOUNTING DEVICES INDICATED		MIXER REMOTE CONTROL WITH AUXILIARY JACK IN CABINET				SPRINKLER PRESSURE SWITCH		
	FLUSH FLOOR BOX/POKE-THRU FOR RECEPTACLE AND DATA DEVICES INDICATED		TOUCH SCREEN CONTROLLER IN CABINET				SPRINKLER FLOW SWITCH		
	MULTI-SERVICE FLOOR BOX FOR MOUNTING DEVICES INDICATED		DISPLAY OUTPUT				SPRINKLER TAMPER SWITCH		
	FLOOR BOX/POKE-THRU FOR FURNITURE FEED AND DATA DEVICES INDICATED		PROJECTOR OUTPUT				SMOKE DAMPER		
	POWER POLE FOR MOUNTING DEVICES INDICATED (HEIGHT AS REQUIRED)		VIDEO INPUT				WIRE GUARD		
	HAND DRYER		WIRELESS ANTENNA/ASSISTIVE LISTENING ANTENNA				PROTECTIVE COVER		
	RANGE HOOD						WEATHERPROOF		
	DISHWASHER						AREA OF RESCUE ASSISTANCE PANEL		
RECEPTACLES - ATTRIBUTES		SYMBOL	DESCRIPTION				AREA OF RESCUE ASSISTANCE REMOTE STATION		
B	MOUNTED HORIZONTALLY IN BASEBOARD KICK SPACE		ACCESS SYSTEM CARD READER				FIRE ALARM CONTROL PANEL		
H	HOSPITAL GRADE DEVICE INSTALLED PER NEC ARTICLE 517 FOR HEALTH CARE FACILITIES		INTRUSION DETECTION SYSTEM KEYPAD				FIRE ALARM SIGNAL EXTENDER PANEL		
GF	INTEGRAL GROUND FAULT		HANDICAP (ADA) DOOR OPERATOR PUSH PAD				FIRE ALARM LCD ANNUNCIATOR		
IG	ISOLATED GROUND		INTRUSION DETECTION SYSTEM WALL MOUNTED MOTION DETECTOR				FIRE ALARM GRAPHIC / LCD ANNUNCIATOR		
SI	INTEGRAL SURGE PROTECTION, ISOLATED GROUND		INTRUSION DETECTION SYSTEM CEILING MOUNTED MOTION DETECTOR				FIRE ALARM COMMAND CENTER		
SP	INTEGRAL SURGE PROTECTION		INTRUSION DETECTION SYSTEM WALL MOUNTED AUDIO SOUNDER				FIRE ALARM RECORD DOCUMENT BOX		
TR	TAMPER RESISTANT (CHILD PROOF)		CEILING MOUNTED CAMERA						
WC	DEDICATED FOR WATER COOLER, MOUNT AT THE HEIGHT/LOCATION REQUIRED BY THE WATER COOLER TRANSFORMER		WALL MOUNTED CAMERA						
VM	DEDICATED FOR VENDING MACHINE		360 DEGREE CEILING MOUNTED CAMERA						
M	MICROWAVE RECEPTACLE. REFER TO ARCHITECTURAL ELEVATION FOR HEIGHT/LOCATION		REQUEST TO EXIT DEVICE						
L	GROUND FAULT RECEPTACLE FOR LAVATORY TRANSFORMER, MOUNT AT THE HEIGHT/LOCATION REQUIRED BY THE LAVATORY TRANSFORMER		ELECTRIC STRIKE FOR DOOR ACCESS SYSTEM						
WP	WEATHERPROOF IN-USE COVER		GLASS BREAK SENSOR - CEILING MOUNTED UNLESS OTHERWISE INDICATED						
00"	MOUNT AT HEIGHT TO CENTER INDICATED		ACCESS/INTRUSION SYSTEM DOOR CONTACT						
+	MOUNT AT 8" ABOVE COUNTER		DOOR HARDWARE PACKAGE PER SPECIFICATIONS, PROVIDE 3/4" CONDUIT AND WIRING TO ALL EQUIPMENT SHOWN IN THE HARDWARE SETS/SCHEDULES, DRAWINGS, AND AS NEEDED FOR ALL ASSOCIATED SYSTEMS. DOOR SHALL OPERATE AS DESCRIBED IN THE NOTES OF THE SPECIFICATIONS AND THE PROJECTS REQUIREMENTS.						
XP	EXPLOSION PROOF		INTERCOM/CAMERA ENTRANCE STATION						
U	DUPLEX RECEPTACLE WITH INTEGRAL USB CHARGER		INTERCOM/CAMERA MASTER STATION						
4U	4 PORT USB CHARGER RECEPTACLE		DOOR RELEASE PUSH BUTTON STATION						
SP/P	INTEGRAL SURGE PROTECTION, MOUNTED AT PROJECTOR HEIGHT (VERIFY WITH OWNER)		DOOR LOCKDOWN PUSH BUTTON STATION						
SP/T	INTEGRAL SURGE PROTECTION, MOUNTED AT TELEVISION HEIGHT (VERIFY WITH OWNER)		MAGNETIC RELEASE BUTTON STATION						
TELECOMMUNICATIONS OUTLETS		POWER DISTRIBUTION AND CONTROL							
SYMBOL	DESCRIPTION	SYMBOL	DESCRIPTION						
	CONDUIT & WIRE		PUSH-BUTTON STATION						
	CONDUIT & WIRE UNDERFLOOR OR UNDERGROUND		EMERGENCY PUSHBUTTON						
	HOME RUN WITH PANEL & CIRCUIT NUMBER NOTED		EMERGENCY PUSHBUTTON WITH KEY RESET						
	MULTIPLE SWITCHED CIRCUITS FED FROM SAME HOME RUN		GAS VALVE SHUTOFF						
	UNDERGROUND		FUSED DISCONNECT SWITCH						
	OVERHEAD		MANUAL MOTOR STARTING SWITCH WITH THERMAL OVERLOAD DEVICE						
	NORMAL/EMERGENCY CIRCUIT		LOCAL DISCONNECT SWITCH- SINGLE OR 2 POLE AS REQUIRED						
	CONDUIT DOWN		CONTACTOR						
	CONDUIT UP		MOTOR STARTER (FURNISHED BY M.C. UNLESS OTHERWISE INDICATED)						
	END OF CONDUIT		COMBINATION STARTER & DISCONNECT SWITCH (FURNISHED BY M.C. UNLESS OTHERWISE INDICATED)						
TELECOMMUNICATIONS - ATTRIBUTES			MOTOR						
00"	MOUNT AT HEIGHT TO CENTER INDICATED		MOTORIZED BLEACHER MOTOR BY GC, PROVIDE FUSED DISCONNECT AND CONTROL/SAFETY WIRING REQUIRED IN 3/4" CONDUIT						
+	MOUNT AT 8" ABOVE COUNTER		MOTORIZED COILING DOOR MOTOR BY GC, PROVIDE FUSED DISCONNECT AND CONTROL/SAFETY WIRING REQUIRED IN 3/4" CONDUIT						
CH	COMPUTER OUTLET - # INDICATES NUMBER OF JACKS		MOTORIZED DIVIDER CURTAIN BY GC, PROVIDE LOCAL DISCONNECT AND CONTROL/SAFETY WIRING REQUIRED IN 3/4" CONDUIT						
TS	TEACHER STATION		MOTORIZED FOLDING PARTITION BY GC, PROVIDE FUSED DISCONNECT AND CONTROL/SAFETY WIRING REQUIRED IN 3/4" CONDUIT						
P	PROJECTOR OUTLET		MOTORIZED DOCK LEVELER BY GC, PROVIDE FUSED DISCONNECT AND CONTROL/SAFETY WIRING REQUIRED IN 3/4" CONDUIT						
PS	PRESENTER STATION		MOTORIZED MAT HOIST BY GC, PROVIDE FUSED DISCONNECT AND CONTROL/SAFETY WIRING REQUIRED IN 3/4" CONDUIT						
TV	TELEVISION OUT								









GENERAL NOTES:

1. PROVIDE THE SERVICES OF A QUALIFIED CONTRACTOR TO IDENTIFY ALL EXISTING UNDERGROUND COMMUNICATION AND ELECTRIC LINES LOCATED IN ALL CONSTRUCTION AND NEW DUCTBANK LOCATIONS. ALL IDENTIFIED AREAS SHALL BE DOCUMENTED ON THE AS-BUILT DRAWINGS.
2. ALL EXISTING DUCTBANKS ARE SHOWN FOR REFERENCE ONLY. EXACT LOCATIONS TO BE DETERMINED PER GENERAL NOTE 1.
3. PATCH AND RESTORE TO MATCH EXISTING CONDITIONS WHERE EXCAVATION DISTURBS EXISTING-TO-REMAIN SURFACES.
4. COORDINATE MANHOLE AND HANDHOLE LOCATIONS WITH ARCHITECT, OWNER, NEW WORK PLANS AND EXISTING CONDITIONS.
5. PROVIDE PULLING TAPE IN ALL UNUSED CONDUITS.
6. UNLESS OTHERWISE NOTED, ALL UNDERGROUND CONDUITS SHALL BE INSTALLED SIMILAR TO DETAILS ON DRAWING E8.1.
7. SITE CONDUITS SHOWN DIAGRAMMATICALLY FOR BIDDING. EC TO COORDINATE EXACT LOCATION WITH CIVIL DRAWINGS PROVIDED UNDER A SEPARATE CONTRACT.

DRAWING NOTES:

1. 24" x 24" x 24" DEEP HANDHOLE AS INDICATED ON E1.2.
2. 36" x 36" x 30" DEEP HANDHOLE FOR ATHLETIC LIGHTING. PROVIDE DIVIDER IN HANDHOLE TO SEPARATE LIFE-SAFETY WIRING FROM NON-LIFE-SAFETY WIRING.
3. 24" x 24" x 24" DEEP HANDHOLE WITH (2) 2" CONDUITS FROM HANDHOLE TO POLE FOR LIGHTING WIRING. PROVIDE DIVIDER IN HANDHOLE TO SEPARATE LIFE-SAFETY WIRING FROM NON-LIFE-SAFETY WIRING.
4. 24" x 24" x 24" DEEP HANDHOLE WITH 2" CONDUIT FROM HANDHOLE TO POLE FOR LIGHTING WIRING.
5. 1-1/4" CONDUIT WITH MUSCO LIGHTING CONTROL CABLING.
6. 1-1/4" CONDUIT WITH MUSCO LIGHTING CONTROL CABLING + SPARE 1-1/4" CONDUIT.
7. 3/8" + 2#10 + 1#8 GND IN 2" CONDUIT (POLE F1 FOOTBALL, ACCENT) + 2#6 + 1#8 GND IN 2" CONDUIT (POLE F1 EGRESS/COLOR).
8. 3/8" + 1#8 GND IN 2" CONDUIT (POLE F2 FOOTBALL) + 2#6 + 1#8 GND IN 2" CONDUIT (POLE F2 EGRESS/COLOR).
9. 3/8" + 2#10 + 1#8 GND IN 2" CONDUIT (POLE F3 FOOTBALL, ACCENT) + 2#6 + 1#8 GND IN 2" CONDUIT (POLE F3 EGRESS/COLOR).
10. 3/8" + 3/4" + 2#6 + 1#4 GND IN 2-1/2" CONDUIT (POLE F4 FOOTBALL, PRACTICE, ACCENT) + 2#6 + 1#8 GND IN 2" CONDUIT (POLE F4 EGRESS/COLOR).
11. 3/8" + 3/4" + 1#4 GND IN 2-1/2" CONDUIT (POLE F5 FOOTBALL, PRACTICE) + 2#6 + 1#8 GND IN 2" CONDUIT (POLE F5 EGRESS/COLOR).
12. 3/8" + 3/4" + 2#6 + 1#4 GND IN 2-1/2" CONDUIT (POLE F6 FOOTBALL, PRACTICE, ACCENT) + 2#6 + 1#8 GND IN 2" CONDUIT (POLE F6 EGRESS/COLOR).
13. 8#10 + 1#10 GND IN 2" CONDUIT (POLE A1 SOFTBALL, BULLPEN, ACCENT).
14. 5#10 + 1#10 GND IN 2" CONDUIT (POLE A2 SOFTBALL, ACCENT).
15. 6#10 + 1#10 GND IN 2" CONDUIT (POLE A1 SOFTBALL, BULLPEN) + 5#10 + 1#10 GND IN 2" CONDUIT (POLE B1 SOFTBALL, POLE A1/B1 ACCENT).
16. 3#10 + 1#10 GND IN 2" CONDUIT (POLE A2 SOFTBALL) + 5#10 + 1#10 GND IN 2" CONDUIT (POLE B2 SOFTBALL, POLE A2/B2 ACCENT).
17. 3/8" + 1#4 GND IN 2" CONDUIT (POLE F5/F6 FOOTBALL) + 3/4" + 1#4 GND IN 2" CONDUIT (POLE F5/F6 PRACTICE) + 2#6 + 1#8 GND IN 2" CONDUIT (POLE F5 ACCENT) + 2#6 + 1#8 GND IN 2" CONDUIT (POLE F5/F6 EGRESS/COLOR) + SPARE 2" CONDUIT.
18. 3/8" + 1#4 GND IN 2" CONDUIT (POLE F4/F5/F6 FOOTBALL) + 3/4" + 1#4 GND IN 2" CONDUIT (POLE F4/F5/F6 PRACTICE) + 2#6 + 1#8 GND IN 2" CONDUIT (POLE F4/F6 ACCENT) + 2#6 + 1#8 GND IN 2" CONDUIT (POLE F4/F5/F6 EGRESS/COLOR) + SPARE 2" CONDUIT.
19. 3/8" + 1#4 GND IN 2" CONDUIT (POLE F4/F5/F6 FOOTBALL) + 3/4" + 1#4 GND IN 2" CONDUIT (POLE F4/F5/F6 PRACTICE) + 2#6 + 1#8 GND IN 2" CONDUIT (POLE F4/F6 ACCENT) + 2#6 + 1#8 GND IN 2" CONDUIT (POLE F4/F5/F6 EGRESS/COLOR) + 6#10 + 1#10 GND IN 2" CONDUIT (POLE A1 SOFTBALL, BULLPEN) + 5#10 + 1#10 GND IN 2" CONDUIT (POLE B1 SOFTBALL, POLE A1/B1 ACCENT) + (2) SPARE 2" CONDUITS.
20. 3/8" + 1#4 GND IN 2" CONDUIT (POLE F4/F5/F6 FOOTBALL) + 3/4" + 1#4 GND IN 2" CONDUIT (POLE F4/F5/F6 PRACTICE) + 2#6 + 1#8 GND IN 2" CONDUIT (POLE F4/F6 ACCENT) + 2#6 + 1#8 GND IN 2" CONDUIT (POLE F4/F5/F6 EGRESS/COLOR) + 6#10 + 1#10 GND IN 2" CONDUIT (POLE A1 SOFTBALL, BULLPEN) + 3#10 + 1#10 GND IN 2" CONDUIT (POLE A2 SOFTBALL) + 5#10 + 1#10 GND IN 2" CONDUIT (POLE B1 SOFTBALL) + 5#10 + 1#10 GND IN 2" CONDUIT (POLE B2 SOFTBALL, POLE A1/A2/B1/B2 ACCENT) + (2) SPARE 2" CONDUITS.

BID ALTERNATES:

- 26A: ELIMINATE ALL WIRING, CONDUITS AND HANDHOLES ASSOCIATED WITH SOFTBALL FIELD ATHLETIC LIGHTING.

ATHLETIC LIGHTING SCOPE OF WORK:

- THE ELECTRICAL CONTRACTOR IS RESPONSIBLE FOR THE FOLLOWING SCOPE OF WORK FOR THE ATHLETIC LIGHTING. COORDINATE ALL WORK WITH MUSCO.
1. INSTALL ATHLETIC LIGHTING CONTROL EQUIPMENT FURNISHED BY MUSCO.
  2. PROVIDE ALL WIRING/CONDUIT FOR ATHLETIC LIGHTING.
  3. MAKE FINAL WIRING TERMINATIONS AT MUSCO CONTROLLERS AND POLE MOUNTED LIGHTS AND TEST ALL WIRING AND CONNECTIONS.

11/18/2024 10:07:50 AM

1" = 40'-0"

1 SITE PLAN - ATHLETIC LIGHTING

11/18/2024 10:07:50 AM

1" = 40'-0"

1 SITE PLAN - ATHLETIC LIGHTING

RENOVATIONS  
J.P. MCCASKEY STADIUM  
PROJECTS  
SCHOOL DISTRICT OF LANCASTER  
445 N RESERVOIR ST, LANCASTER, PA 17602

ISSUE DATES  
DATE: 03/05/2025  
DESCRIPTION: CONFORMED SET

PROJ #1: 24-SBL-03  
SHEET NUMBER:  
SHEET TITLE:  
DRAWN BY: A. NOLT

MAROTTA / MAIN  
ARCHITECTS  
WWW.MAROTTAMAIN.COM

MOORE  
ENGINEERING COMPANY

3637 Columbia Avenue, Lancaster, PA 17603  
P: 717.265.3141, moore@engineering.com

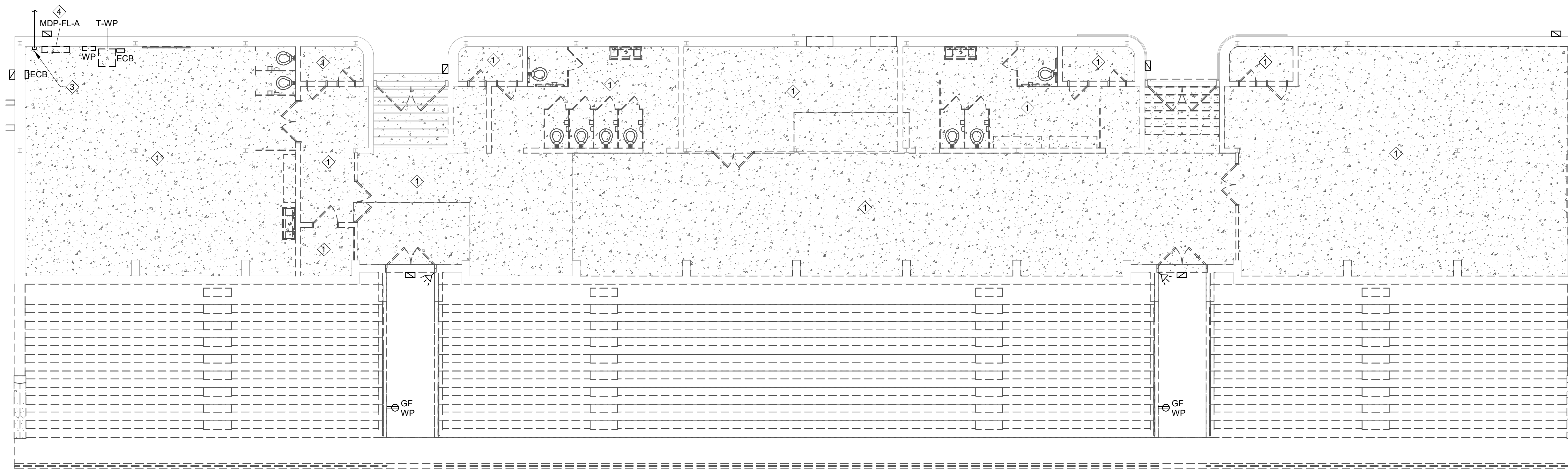
SEAL:

CONSULTANT:

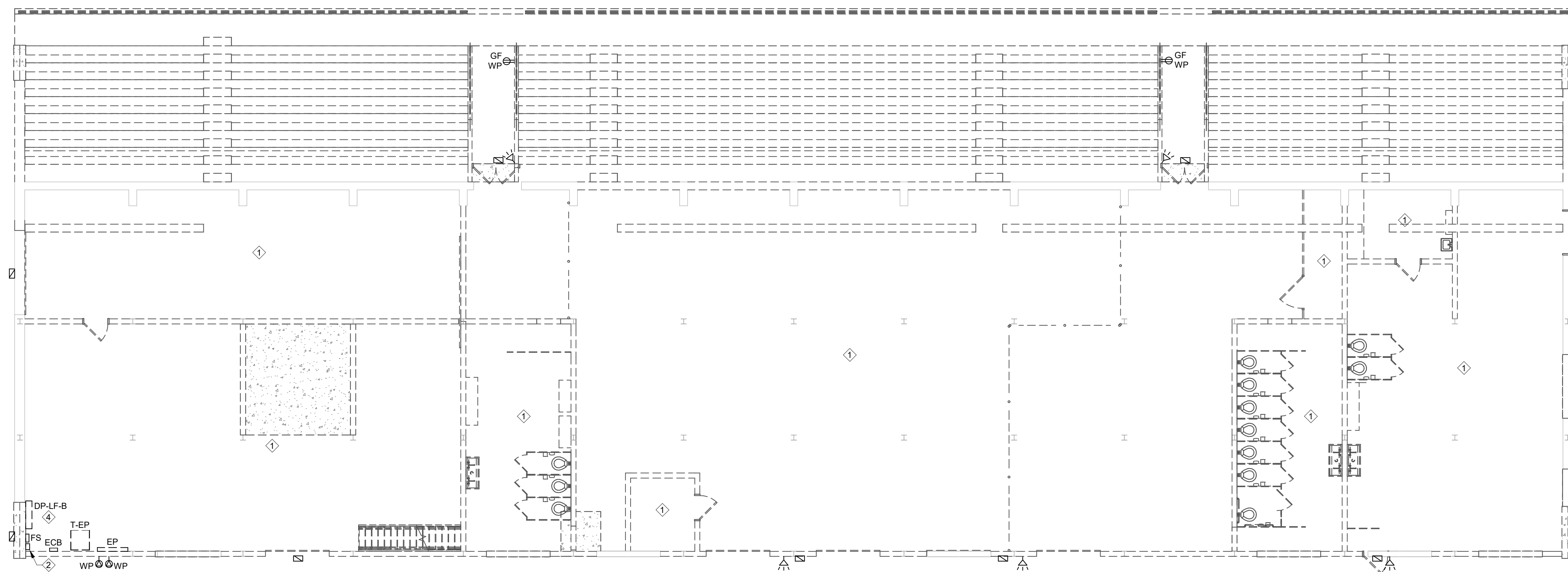
THE DRAWING IS THE PROPERTY OF THE  
FIRM AND IS NOT TO BE REPRODUCED OR  
USED IN ANY FORM WITHOUT THE  
WRITTEN PERMISSION OF THE FIRM.

CONFORMED SET

E1.4



1 VISITOR FIRST FLOOR PLAN - ELECTRICAL DEMOLITION  
1/8" = 1'-0"



2 HOME FIRST FLOOR PLAN - ELECTRICAL DEMOLITION  
1/8" = 1'-0"

#### DRAWING NOTES:

1. UNLESS OTHERWISE NOTED, REMOVE ALL ELECTRICAL DEVICES, EQUIPMENT, AND WIRING/RACEWAY IN THIS AREA.
2. REMOVE TELECOM ENCLOSURE AND TURN OVER TO OWNER.
3. REMOVE ABANDONED TELEPHONE SERVICE CABLING AND ASSOCIATED CONDUIT.
4. REMOVE DISTRIBUTION PANEL. STORE FOR POSSIBLE TEMPORARY USE IN EVENT THAT NEW DISTRIBUTION PANELS ARE NOT AVAILABLE WHEN REQUIRED FOR CONSTRUCTION SCHEDULE.

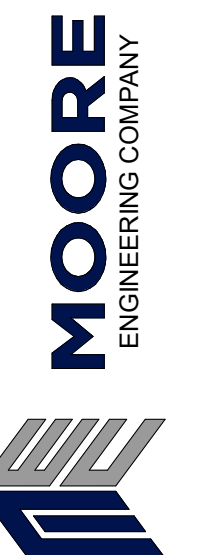
GENERAL DEMOLITION NOTES:

1. THESE DEMOLITION PLANS WERE PREPARED FROM ON-SITE SURVEYS AND ORIGINAL CONSTRUCTION DOCUMENTS. IN AN EFFORT TO PROVIDE THIS CONTRACTOR WITH THE GENERAL SCOPE OF THE PROJECT, THESE DEMOLITION PLANS AND SPECIFICATIONS WERE PREPARED UNDER THE EXISTING CONDITIONS TO THE BEST OF OUR KNOWLEDGE. IT IS STILL THE RESPONSIBILITY OF THE CONTRACTOR TO VISIT THE SITE AND INCLUDE IN THE BID OTHER INFORMATION THAT MAY BE NECESSARY TO REMOVE ALL ELECTRICAL EQUIPMENT. REFER TO THE ARCHITECTURAL DRAWINGS FOR THE COMPLETE BUILDING DEMOLITION PLANS.
2. REMOVE ANY ACoustICAL TILE OR CEILING MATERIAL NOT REMOVED BY ARCHITECT. PROVIDE ACCESS TO THE CEILING SPACE TO REMOVE AND/OR THE INSTALLATION OF NEW ELECTRICAL EQUIPMENT. CONTRACTOR SHALL REPLACE ALL CEILING TILES DAMAGED BY HIM THAT ARE TO REMAIN. PROVIDE CEILING TILES TO MATCH EXISTING TYPE. VERIFY TYPE WITH ARCHITECT BEFORE INSTALLING.
3. REPAIR FIRE AND SMOKE RATED PARTITIONS SURROUNDING ELECTRICAL WORK AS SPECIFIED. REFER TO THE ARCHITECTURAL PLANS FOR LOCATIONS OF SMOKE AND FIRE PARTITIONS.
4. REFER TO THE MECHANICAL AND PLUMBING DRAWINGS AND COORDINATE WITH THE MECHANICAL CONTRACTOR FOR EXACT QUANTITIES AND LOCATION OF EQUIPMENT TO REMAIN AND/OR TO BE RELOCATED. THE ELECTRICAL CONTRACTOR IS RESPONSIBLE FOR REMOVAL OF ALL ELECTRICAL ITEMS SERVING MECHANICAL EQUIPMENT THAT IS TO BE REMOVED.
5. REFER TO THE MECHANICAL AND PLUMBING DRAWINGS AND COORDINATE WITH THE MECHANICAL CONTRACTOR FOR EXACT QUANTITIES AND LOCATION OF EQUIPMENT TO REMAIN AND/OR TO BE RELOCATED. PROVIDE NEW DISCONNECTS, WIRE AND CONDUITS, SAME SIZE AS EXISTING, AND RECONNECT EQUIPMENT AS REQUIRED.
6. WHERE DEMOLITION OF ELECTRICAL EQUIPMENT DAMAGES EXISTING SURFACES THAT ARE TO REMAIN FINISH, THE SURFACES TO THE SAME CONDITION AS THE ADJACENT SURFACES. ALL PATCHES AND REPAIRS SHALL BE SUBJECT TO REVIEW AND APPROVAL OF THE ARCHITECT. WHEN REPAIR FINISH IS REQUIRED, SHOWS THAT A ROOM WILL BE PAINTED UNDER ANOTHER CONTRACT PRIME THE WALL AND CEILING PATCHES READY FOR FINISH PAINTING. WHERE ROOM FINISHES ARE NOT PART OF THE CONTRACT, THE CONTRACTOR SHALL MATCH WALL AND CEILING PATCHES TO MATCH EXISTING SURFACES. BLANK PLATES SHALL NOT BE ACCEPTABLE FOR FLUSH PANELBOARDS OR CLOCKS/SPEAKERS REMOVED.
7. THE DEMOLITION OF THE ELECTRICAL SYSTEMS MUST BE PHASED TO CORRESPOND TO THE PHASED NATURE OF THE CONSTRUCTION OF THIS PROJECT. NEW SYSTEMS MUST BE OPERATIONAL FOR AREAS TURNED OVER AND OCCUPIED PRIOR TO SUBSTANTIAL COMPLETION. REFER TO THE ARCHITECTURAL DRAWINGS FOR THE PHASED DEMOLITION AND CONSTRUCTION INFORMATION. IF ANY SYSTEM OR PORTION OF A SYSTEM IS REMOVED, THE CONTRACTOR SHALL BE RESPONSIBLE FOR THE PHASED DEMOLITION AND THE CONTRACTOR WILL BE HELD RESPONSIBLE FOR RESTORING THAT SYSTEM TO A FULLY OPERATIONAL STATE. IN ADDITION, THE CONTRACTOR IS RESPONSIBLE FOR THE PHASED DEMOLITION NECESSARY TO KEEP ALL REQUIRED SYSTEMS OPERATIONAL UNTIL THEY ARE NO LONGER NEEDED. NEW AND EXISTING FIRE ALARM SYSTEMS MUST BE INTERCONNECTED TO THE EXISTING FIRE ALARM SYSTEM. THE CONTRACTOR WILL NOTIFICATION EXISTING FIRE ALARM SYSTEMS FOR BUILDINGS SHALL BE TREATED AS SEPARATE ADDRESSES ON THE NEW SYSTEM UNTIL THEY ARE REMOVED. THIS MUST BE DONE PRIOR TO THE PHASED DEMOLITION, RELOCATION, RE-WIRING, AND RE-PROGRAMMING OF ALL SYSTEMS EQUIPMENT. EXISTING SYSTEMS THAT WILL REMAIN OPERATIONAL THROUGHOUT THE CONSTRUCTION MUST BE KEPT OPERATIONAL. LIMITED TO: THE INTERCOMMASTER CLOCK, FIRE ALARM, VIDEO SURVEILLANCE, TELEPHONE, DATA NETWORK AND THE NORMAL AND EMERGENCY ELECTRICAL DISTRIBUTION SYSTEMS. THE PHASED DEMOLITION OF THESE SYSTEMS MUST BE COORDINATED WITH AND APPROVED BY THE GENERAL TRADES CONTRACTOR AND THE OWNER.
8. REFER TO THE SPECIFICATIONS FOR ADDITIONAL REQUIREMENTS.

11



**CONCLUSION:**



P: 717.285.3141, MooreEngineering.com

THIS DRAWING IS THE PROPERTY OF THE ARCHITECT AND MAY NOT BE PRODUCED IN ANY FORM WITHOUT WRITTEN PERMISSION

## RENOVATIONS

**J.F. MCCASKEY STADIUM  
PROJECTS  
SCHOOL DISTRICT OF LANCASTER**

443 N RESERVE VOIR 31, LANCASTER, PA 17602

[illegible]

PROJ # : 24-SDL-03                      DRAWN BY : A. NOLT

**SHEET TITLE:**

**FIRST FLOOR PLANS -  
ELECTRICAL  
DEMOLITION**

SHEET NUMBER:

## E2.1

**CONFORMED SET**

3/5/2025 2:20:16 PM



1. UNLESS OTHERWISE NOTED, REMOVE ALL ELECTRICAL DEVICES, EQUIPMENT, AND WIRING/RACEWAY IN THIS AREA.
2. EXISTING BUILDING MOUNTED FLOODLIGHT TO REMAIN. REVISE BRANCH CIRCUIT WIRING/CONDUIT AS INDICATED ON NEW WORK PLANS.



**MOORE**  
ENGINEERING COMPANY

3637 Columbia Avenue, Lancaster, PA 17603  
P: 717.285.3141, [MooreEngineering.com](http://MooreEngineering.com)

RENOVATIONS  
J.P. MCCASKEY STADIUM  
PROJECTS  
SCHOOL DISTRICT OF LANCASTER  
445 N RESERVOIR ST, LANCASTER, PA 17602

[illegible]

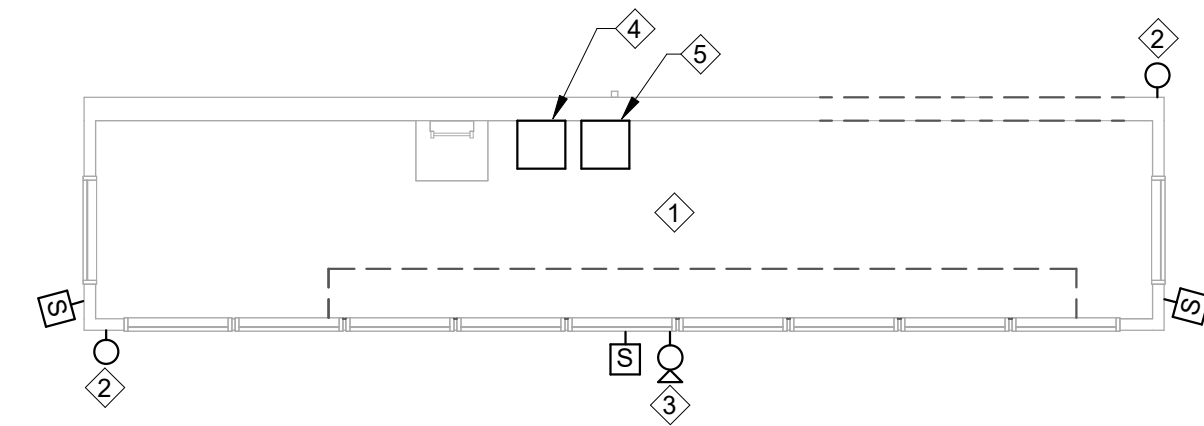
PROJ #: 24-SDL-03      DRAWN BY: A. NOLT

## SECOND FLOOR PLAN - ELECTRICAL DEMOLITION

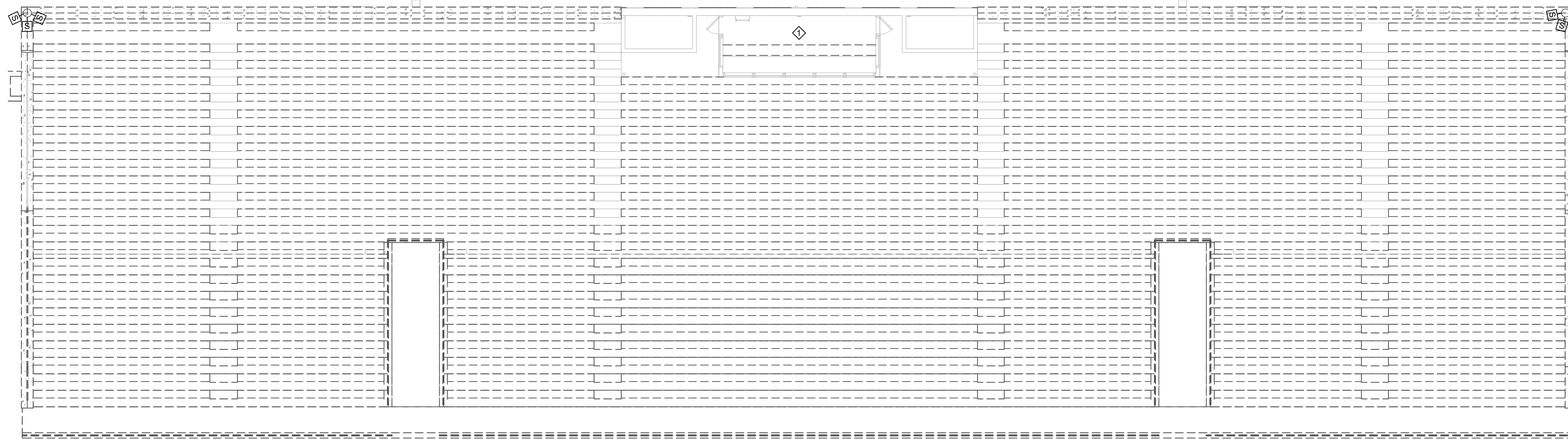
**SHEET NUMBER:**

**E2.2**

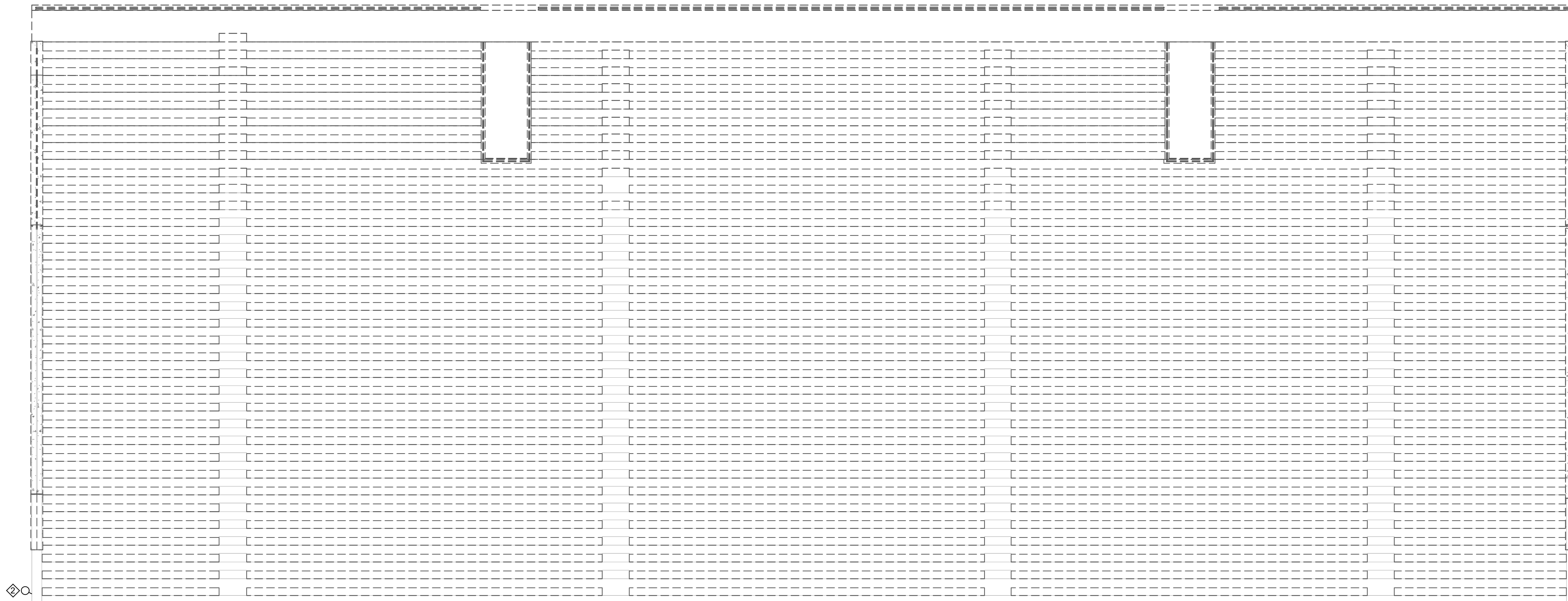
## CONFORMED SET



2 VISITOR PRESS BOX SECOND FLOOR PLAN- ELECTRICAL DEMOLITION  
1/8" = 1'-0"



1 VISITOR BLEACHER PLAN - ELECTRICAL DEMOLITION  
1/8" = 1'-0"



3 HOME BLEACHER PLAN - ELECTRICAL DEMOLITION  
1/8" = 1'-0"

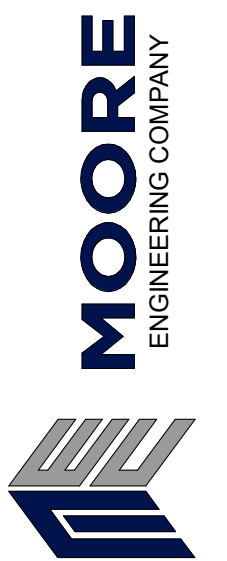
#### DRAWING NOTES:

1. UNLESS OTHERWISE NOTED, REMOVE ALL ELECTRICAL DEVICES, EQUIPMENT, AND WIRING/RACEWAY IN THIS AREA.
2. REMOVE WIRELESS NETWORK ANTENNA AND TURN OVER TO OWNER.
3. REMOVE SURVEILLANCE CAMERA AND TURN OVER TO OWNER.
4. REMOVE WALL MOUNT AV RACK AND ASSOCIATED WIRING/RACEWAY.
5. REMOVE WALL MOUNTED DATA RACK AND RELOCATE AS INDICATED AS INDICATED ON NEW WORK PLANS.

100



**CONCLUSION:**



P: 717.285.3141, MooreEngineering.com

**THIS DRAWING IS THE PROPERTY OF THE ARCHITECT AND MAY NOT BE PRODUCED IN ANY FORM WITHOUT WRITTEN PERMISSION**

RENOVATIONS  
J.P. MCCASKEY STADIUM  
PROJECTS  
SCHOOL DISTRICT OF LANCASTER  
445 N RESERVOIR ST., LANCASTER, PA 17602

[illegible]

PROJ #: 24-SDL-03                      DRAWN BY: A. NOLT

**SHEET TITLE:**

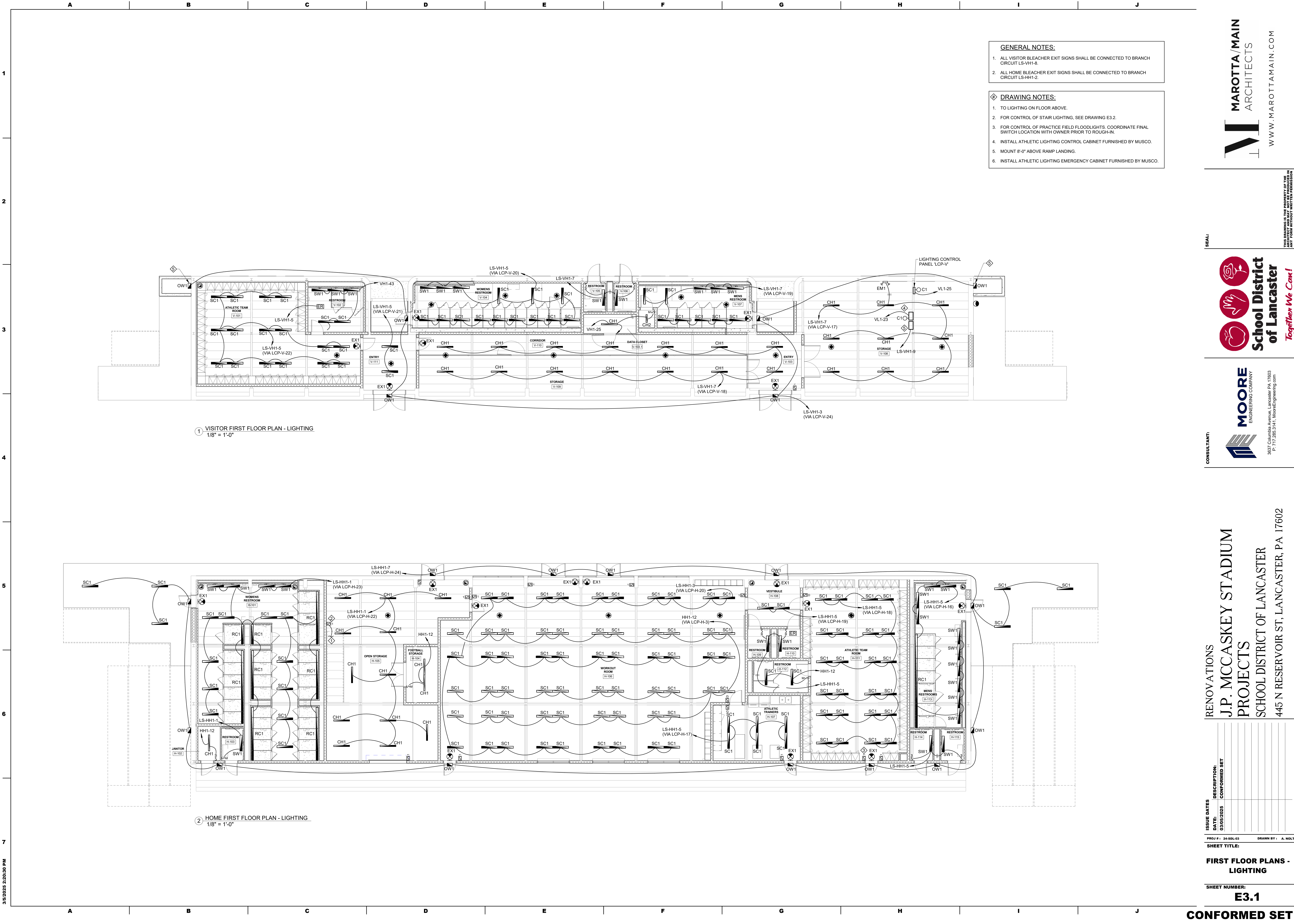
**BLEACHER PLANS -  
ELECTRICAL  
DEMOLITION**

SHEET NUMBER: \_\_\_\_\_

## E2.3

**CONFORMED SET**

3/5/2025 2:20:24 PM



- GENERAL NOTES:**
1. ALL VISITOR BLEACHER EXIT SIGNS SHALL BE CONNECTED TO BRANCH CIRCUIT LS-VH1-8.
  2. ALL HOME BLEACHER EXIT SIGNS SHALL BE CONNECTED TO BRANCH CIRCUIT LS-HH1-2.
- DRAWING NOTES:**
1. TO LIGHTING ON FLOOR ABOVE.
  2. FOR CONTROL OF STAIR LIGHTING, SEE DRAWING E3.2.
  3. FOR CONTROL OF PRACTICE FIELD FLOODLIGHTS, COORDINATE FINAL SWITCH LOCATION WITH OWNER PRIOR TO ROUGH-IN.
  4. INSTALL ATHLETIC LIGHTING CONTROL CABINET FURNISHED BY MUSCO.
  5. MOUNT 8'-0" ABOVE RAMP LANDING.
  6. INSTALL ATHLETIC LIGHTING EMERGENCY CABINET FURNISHED BY MUSCO.

1 VISITOR FIRST FLOOR PLAN - LIGHTING  
1/8" = 1'-0"

2 HOME FIRST FLOOR PLAN - LIGHTING  
1/8" = 1'-0"

SEAL:

CONSULTANT:

**MAROTTA/MAIN**  
ARCHITECTS

**School District of Lancaster**  
*Together We Can!*

**MOORE**  
ENGINEERING COMPANY

3637 Columbia Avenue, Lancaster, PA 17603  
P: 717.283.3141, [mooreengineering.com](mailto:mooreengineering.com)

RENOVATIONS  
J.P. MCCASKEY STADIUM  
PROJECTS  
SCHOOL DISTRICT OF LANCASTER  
445 N RESERVOIR ST, LANCASTER, PA 17602

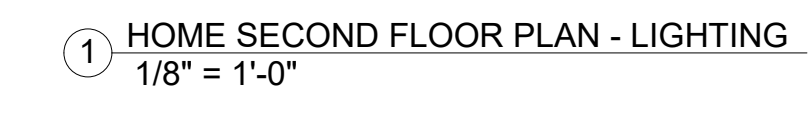
ISSUE DATES	DESCRIPTION
DATE: 03/05/2025	CONFORMED SET

PROJ #1: 24-50L-03      DRAWN BY: A. NOLT

SHEET TITLE:  
**FIRST FLOOR PLANS - LIGHTING**

SHEET NUMBER:  
**E3.1**

**CONFORMED SET**



1. TO LIGHTING ON FLOOR BELOW.
2. EXISTING BUILDING MOUNTED FLOODLIGHT TO REMAIN.
3. EXISTING FLOODLIGHT BRANCH CIRCUIT FEED. REWORK/EXTEND WIRING/CONDUIT AS REQUIRED AND CONNECT TO NEW BRANCH CIRCUIT AS INDICATED.



**School District  
of Lancaster**

*Together We Can!*



**MOORE**  
ENGINEERING COMPANY

3637 Columbia Avenue, Lancaster PA 17603  
P: 717.285.3141, MooreEngineering.com

RENOVATIONS  
J.P. MCCASKEY STADIUM  
PROJECTS  
SCHOOL DISTRICT OF LANCASTER  
445 N RESERVOIR ST, LANCASTER, PA 17602

[illegible]

## SECOND FLOOR PLAN - LIGHTING

**SHEET NUMBER:**

**E3.2**

**CONFORMED SET**

THIS DRAWING IS THE PROPERTY OF THE ARCHITECT AND MAY NOT BE PRODUCED IN ANY FORM WITHOUT WRITTEN PERMISSION



6637 Columbia Avenue, Lancaster PA 17603  
P: 717 285 3141 MooreEngineering.com

# THE UNIVERSITY OF CHICAGO

DRAWN BY \_\_\_\_\_

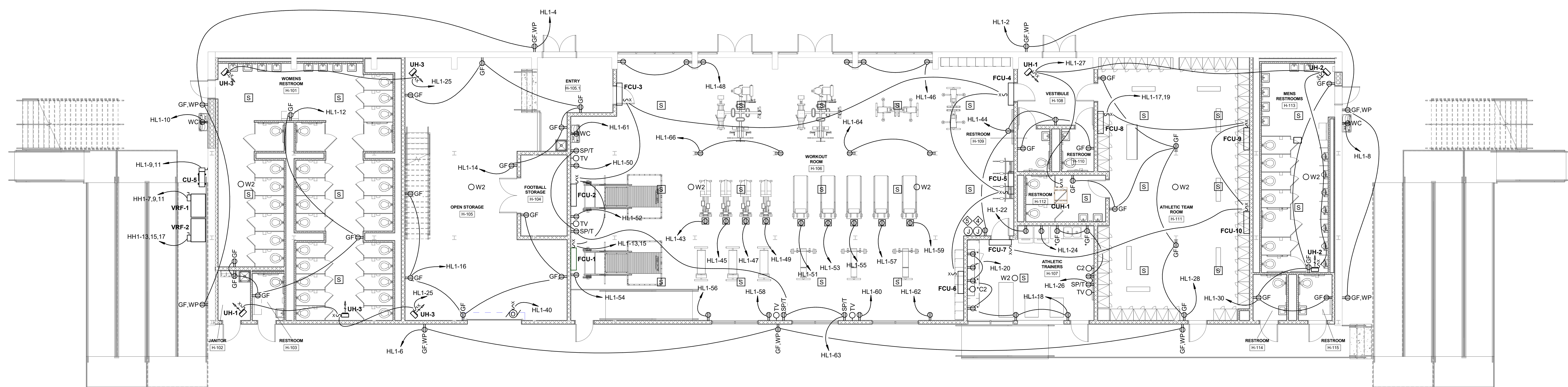
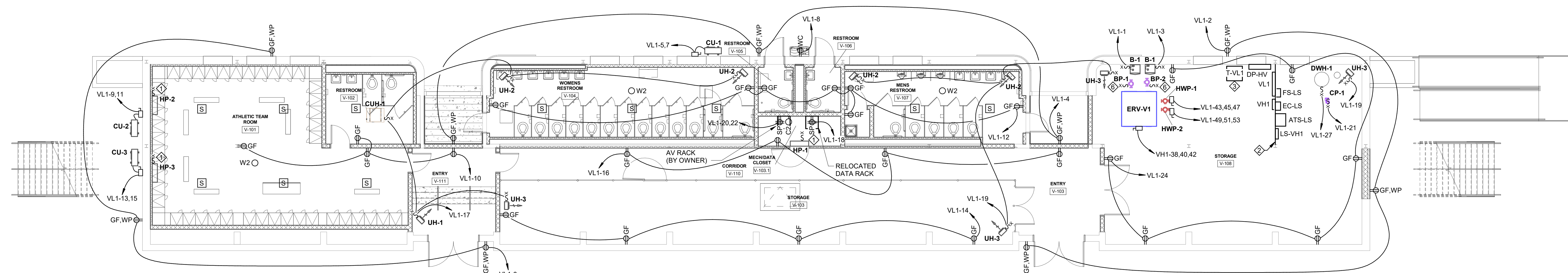
LAN  
G

---

**S**

1. INSTALL ATHLETIC LIGHTING COMMUNICATION CABINET FURNISHED BY MUSCO.
2. DESKTOP SPORTS FIELD LIGHTING TOUCHSCREEN CONTROL BY MUSCO





GENERAL NOTES:

1. PROVIDE 2-GANG BACKBOX WITH BLANK COVER AT ALL SPEAKERS AND MICROPHONES WITH 3/4" CONDUIT TO AV RACK. COORDINATE FINAL LOCATIONS AND ROUGH-INS WITH OWNER'S AV VENDOR.


#### DRAWING NOTES:

1. PROVIDE 1" CONDUIT WITH WIRING REQUIRED TO CONDENSING UNIT.
2. PROVIDE UNISTRUT RACK WITH FLOOR AND CEILING SUPPORTS FOR MOUNTING ELECTRICAL EQUIPMENT.
3. PROVIDE 4" HOUSING/KEEP PAD FOR TRANSFORMER.
4. PROVIDE 2-GANG BACKBOX WITH 3/4" CONDUIT TO AV RACK FOR TOUCHSCREEN AUDIO CONTROL BY OWNER. COORDINATE FINAL LOCATION AND ROUGH-INS WITH OWNER'S AV VENDOR.
5. PROVIDE 1-GANG BACKBOX WITH 3/4" CONDUIT TO AV RACK FOR BULLIT RECEIVER BY OWNER. COORDINATE FINAL LOCATION AND ROUGH-INS WITH OWNER'S AV VENDOR.
6. BOILER CIRC PUMP POWER AND CONTROL FROM BOILER. PROVIDE 3/4" CONDUIT WITH WIRING REQUIRED TO BOILER.

**SEAL:**



**CONSULTANT:**



**MOORE**  
ENGINEERING COMPANY

637 Columbia Avenue, Lancaster PA 17603  
P: 717.285.3141, MooreEngineering.com

RENOVATIONS  
J.P. MCCASKEY STADIUM  
PROJECTS  
SCHOOL DISTRICT OF LANCASTER  
445 N RESERVOIR ST, LANCASTER, PA 17602

[illegible]

## FIRST FLOOR PLANS POWER

**SHEET NUMBER:**  
**E4.1**

**CONFORMED SET**




1. PROVIDE 1" CONDUIT WITH WIRING REQUIRED TO CONDENSING UNIT.
2. PROVIDE 4" HOUSEKEEPING PAD FOR TRANSFORMER.
3. BOILER CIRC PUMP POWER AND CONTROL FROM BOILER. PROVIDE 3/4" CONDUIT WITH WIRING REQUIRED TO BOILER.

SEAL:

THIS DRAWING IS THE PROPERTY OF THE ARCHITECT AND MAY NOT BE PRODUCED IN ANY FORM WITHOUT WRITTEN PERMISSION



**CONSIIL TANT:**



**MOORE**  
ENGINEERING COMPANY

6637 Columbia Avenue, Lancaster PA 17603  
P: 717.285.3141, MooreEngineering.com

RENOVATIONS  
J.P. MCCASKEY STADIUM  
PROJECTS  
SCHOOL DISTRICT OF LANCASTER  
445 N RESERVOIR ST; LANCASTER, PA 17602

[illegible]

PROJ #: 24-SDL-03      DRAWN BY: A. NOL

### SECOND FLOOR PLAN - POWER

**SHEET NUMBER:**

## E4.2

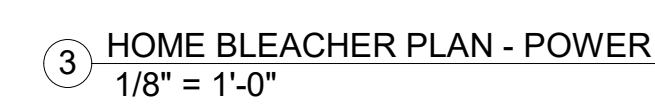
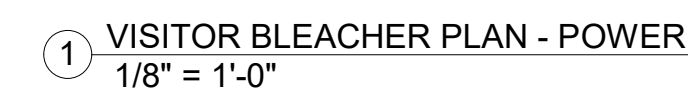
**CONFORMED SET**

3/5/2025 2:20:50 PM



1. PROVIDE 2-GANG BACKBOX WITH BLANK COVER AT ALL SPEAKERS AND MICROPHONES WITH 3/4" CONDUIT TO AV RACK. COORDINATE FINAL LOCATIONS AND ROUGH-INS WITH OWNER'S AV VENDOR.

1. PROVIDE PLUG/MOLD MOUNTED ABOVE COUNTERTOP.
2. MOUNT TO RAILING POST 6" AFF.
3. STADIUM SOUND SYSTEM AUDIO OUTPUT TO HUDL CAMERA. PROVIDE 1-GANG BACKBOX AND 3/4" CONDUIT WITH WIRING REQUIRED TO AV RACK.
4. COORDINATE FINAL DEVICE LOCATIONS AND ROUGH-INS WITH HUDL CAMERA PROVIDED BY OWNER.
5. PROVIDE 1" CONDUIT WITH WIRING REQUIRED TO CONDENSING UNIT.
6. PROVIDE 2-GANG BACKBOX WITH 3/4" CONDUIT TO AV RACK FOR SOUND SYSTEM OUTLETS BY OWNER. COORDINATE FINAL LOCATIONS AND ROUGH-INS WITH OWNER'S AV VENDOR.
7. PROVIDE 6" X 6" X 4" DEEP JUNCTION BOX MOUNTED AT CEILING WITH BLANK COVER AND 2" CONDUIT TO AV RACK FOR SOUND SYSTEM CABLING BY OWNER.





**School District  
of Lancaster**

*Together We Can!*

3637 Columbia Avenue, Lancaster PA 17603  
P: 717.285.3141, MooreEngineering.com

THE UNIVERSITY OF CHICAGO

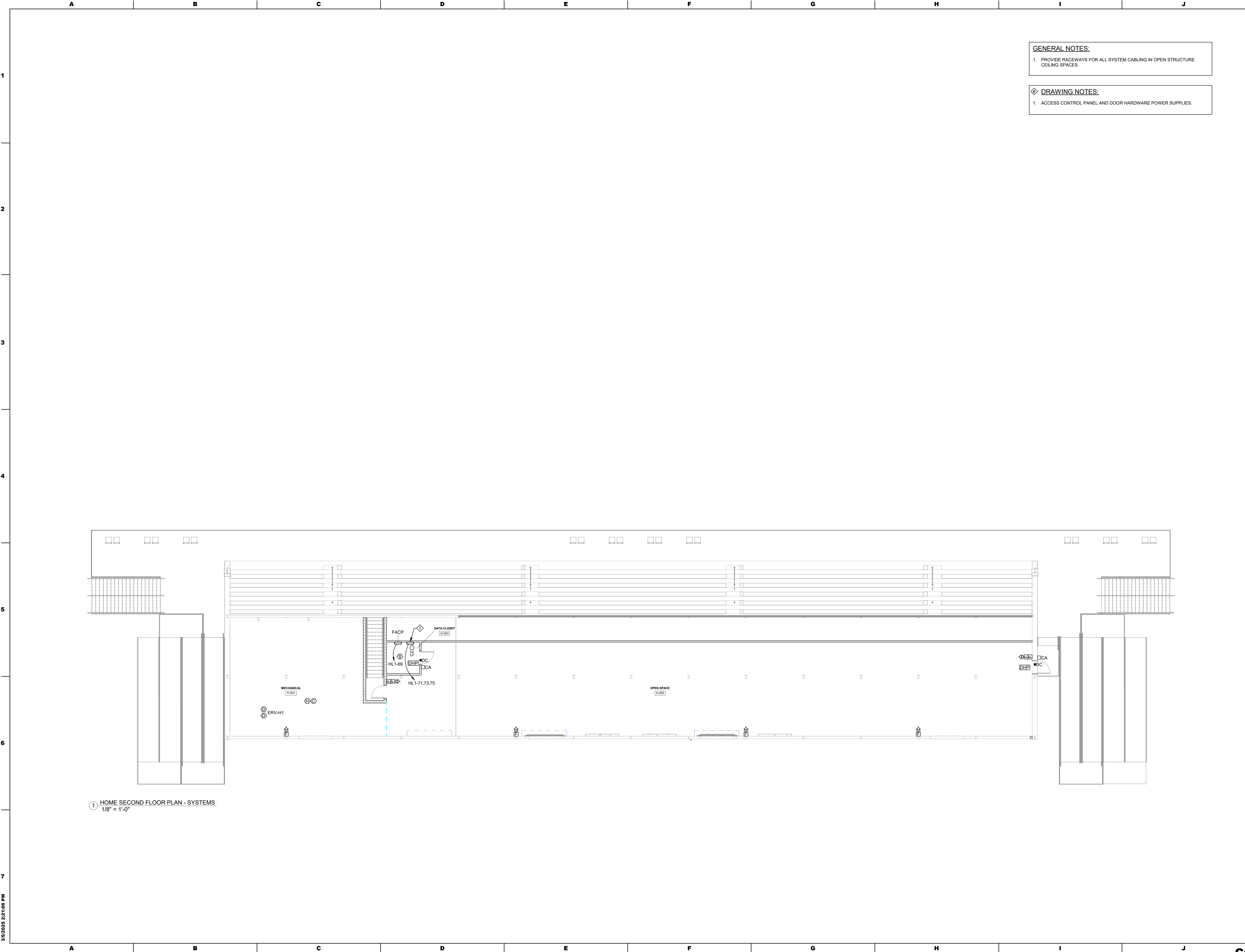

## PLANS

---

**S**

1. ACCESS CONTROL PANEL AND DOOR HARDWARE POWER SUPPLIES.
2. PROVIDE DOOR CONTACT TYPE FOR OVERHEAD DOOR USE.
3. FOR OVERHEAD DOOR OPERATION. COORDINATE WITH GC FOR ACCESS CONTROL INTEGRATION WITH OVERHEAD DOOR CONTROLLER.
4. COORDINATE FINAL LOCATION WITH FIRE MARSHAL PRIOR TO ROUGH-IN.
5. COORDINATE FINAL LOCATION WITH OWNER PRIOR TO ROUGH-IN.





**GENERAL NOTES:**

1. PROVIDE RACEWAYS FOR ALL SYSTEM CABLING IN OPEN STRUCTURE CEILING SPACES.

**DRAWING NOTES:**

1. ACCESS CONTROL PANEL AND DOOR HARDWARE POWER SUPPLIES.

CONSULTANT:

**MOORE**  
ENGINEERING COMPANY

3637 Columbia Avenue, Lancaster, PA 17603  
P: 717.283.3141, mooreengineering.com

SEAL:

**MAROTTA/MAIN**  
ARCHITECTS

WWW.MAROTTAMAIN.COM

RENOVATIONS  
**J.P. MCCASKEY STADIUM**  
PROJECTS  
SCHOOL DISTRICT OF LANCASTER  
445 N RESERVOIR ST, LANCASTER, PA 17602

ISSUE DATES

DATE:	DESCRIPTION:
03/05/2025	CONFORMED SET

PROJ #1: 24-50L-03      DRAWN BY: A. NOLT

SHEET TITLE:

**SECOND FLOOR PLAN - SYSTEMS**

SHEET NUMBER:

**E5.2**

**CONFORMED SET**

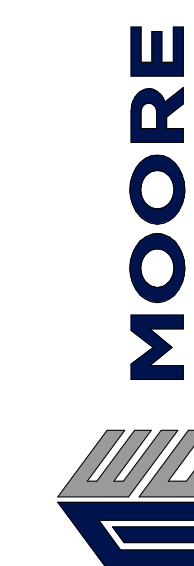
THIS DRAWING IS THE PROPERTY OF THE ARCHITECT AND MAY NOT BE PRODUCED IN ANY FORM WITHOUT WRITTEN PERMISSION

**SEAL:**



*Together We Can!*

**CONSULTANT:**



3637 Columbia Avenue, Lancaster PA 17603  
P: 717 285 3141 MooreEngineering.com

RENOVATIONS  
J.P. MCCASKEY STADIUM  
PROJECTS  
SCHOOL DISTRICT OF LANCASTER  
445 N RESERVOIR ST; LANCASTER, PA 17602

[illegible]

PROJ #: 24-SDL-03      DRAWN BY: A. NOL

## BLEACHER PLANS - SYSTEMS

**SHEET NUMBER:**

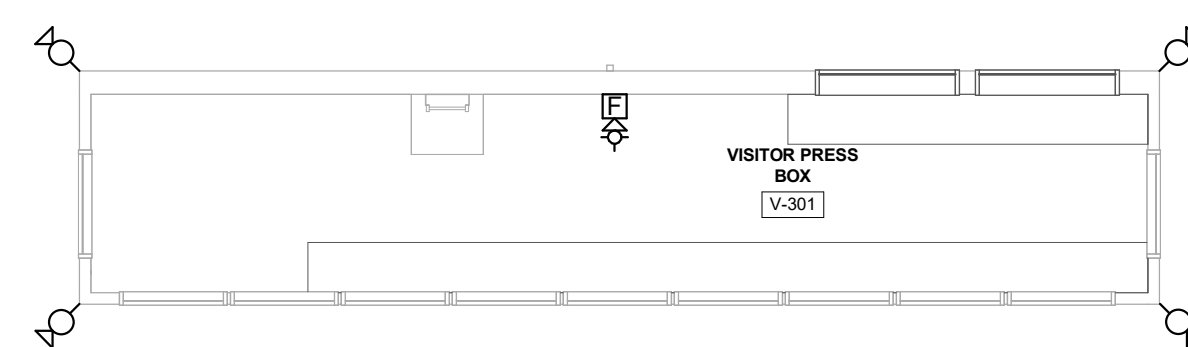
### E5.3

**CONFORMED SET**

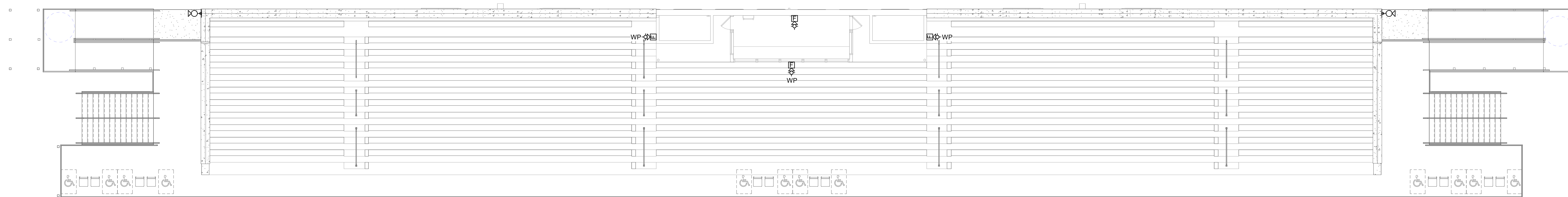
GENERAL NOTES:

1. PROVIDE RACEWAYS FOR ALL SYSTEM CABLING IN OPEN STRUCTURE CEILING SPACES.

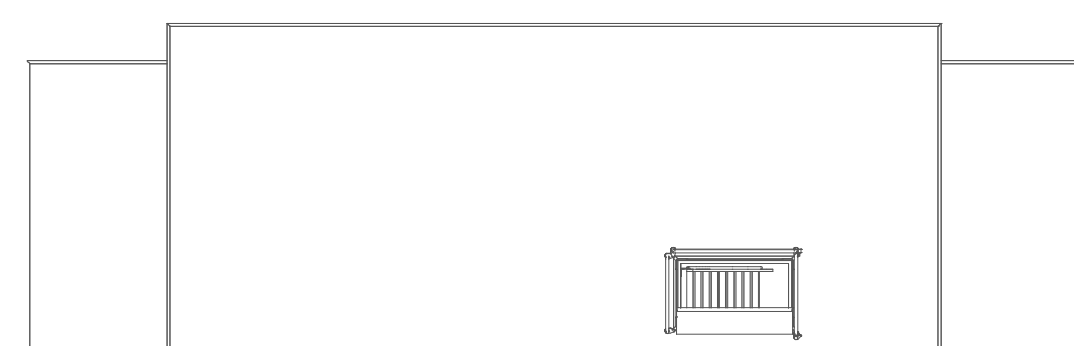
2 VISITOR PRESS BOX SECOND FLOOR PLAN - SYSTEMS  
1/8" = 1'-0"



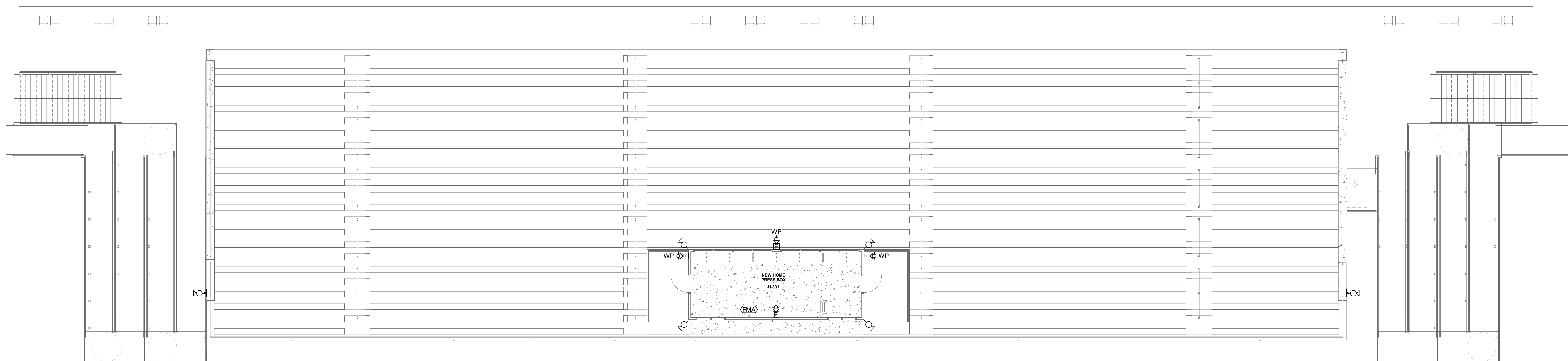
① VISITOR BLEACHER PLAN - SYSTEMS  
1/8" = 1'-0"



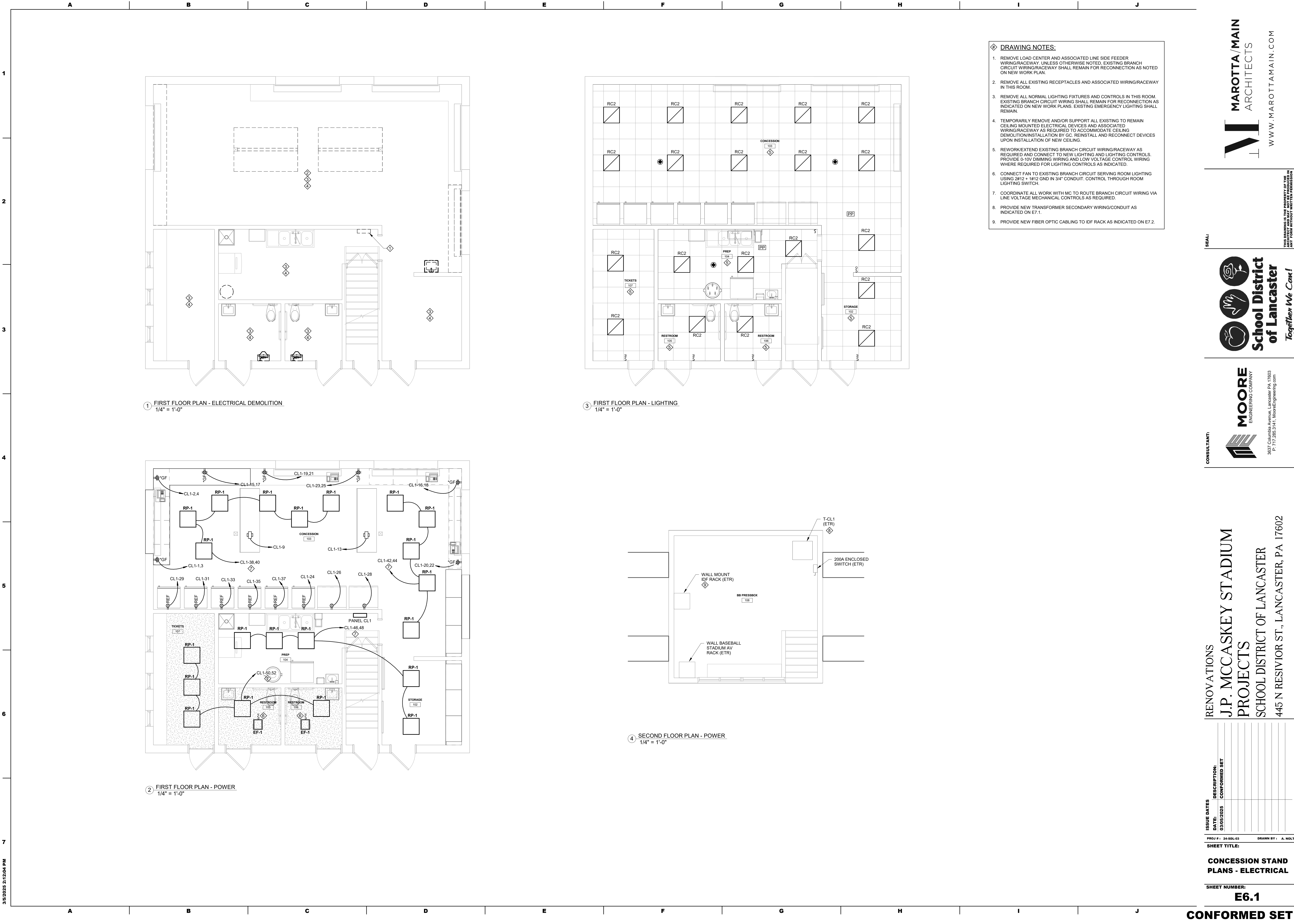
4 HOME PRESS BOX FILM DECK PLAN - SYSTEMS  
1/8" = 1'-0"



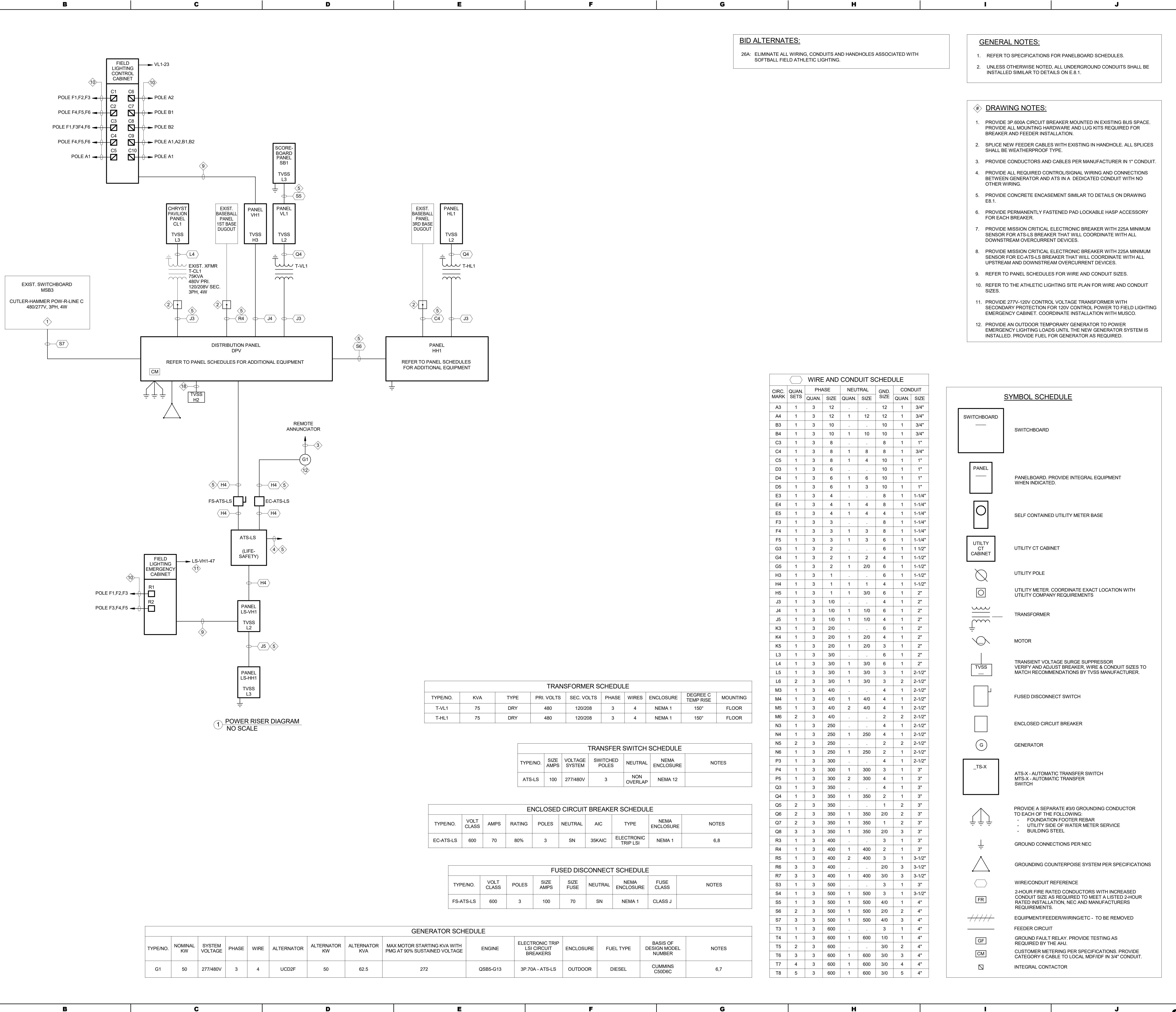
③ HOME BLEACHER PLAN - SYSTEMS  
1/8" = 1'-0"



3/5/2025 2:21:09 PM



3/5/2025 2:21:13 PM



**BID ALTERNATES:**

26A. ELIMINATE ALL WIRING, CONDUITS AND HANDHOLES ASSOCIATED WITH SOFTBALL FIELD ATHLETIC LIGHTING.

**GENERAL NOTES:**

- REFER TO SPECIFICATIONS FOR PANELBOARD SCHEDULES.
- UNLESS OTHERWISE NOTED, ALL UNDERGROUND CONDUITS SHALL BE INSTALLED SIMILAR TO DETAILS ON E.8.1.

**DRAWING NOTES:**

- PROVIDE 3P 600A CIRCUIT BREAKER MOUNTED IN EXISTING BUS SPACE. PROVIDE ALL MOUNTING HARDWARE AND LUG KITS REQUIRED FOR BREAKER AND FEEDER INSTALLATION.
- SPLICE NEW FEEDER CABLES WITH EXISTING IN HANDHOLE. ALL SPLICES SHALL BE WEATHERPROOF TYPE.
- PROVIDE CONDUCTORS AND CABLES PER MANUFACTURER IN 1" CONDUIT.
- PROVIDE ALL REQUIRED CONTROL/SIGNAL WIRING AND CONNECTIONS BETWEEN GENERATOR AND ATS IN A DEDICATED CONDUIT WITH NO OTHER WIRING.
- PROVIDE CONCRETE ENCASEMENT SIMILAR TO DETAILS ON DRAWING E8.1.
- PROVIDE PERMANENTLY FASTENED PAD LOCKABLE HASP ACCESSORY FOR EACH BREAKER.
- PROVIDE MISSION CRITICAL ELECTRONIC BREAKER WITH 225A MINIMUM SENSOR FOR ATS-LS BREAKER THAT WILL COORDINATE WITH ALL DOWNSTREAM OVERCURRENT DEVICES.
- PROVIDE MISSION CRITICAL ELECTRONIC BREAKER WITH 225A MINIMUM SENSOR FOR EC-ATS-LS BREAKER THAT WILL COORDINATE WITH ALL UPSTREAM AND DOWNSTREAM OVERCURRENT DEVICES.
- REFER TO PANEL SCHEDULES FOR WIRE AND CONDUIT SIZES.
- REFER TO THE ATHLETIC LIGHTING SITE PLAN FOR WIRE AND CONDUIT SIZES.
- PROVIDE 277V-120V CONTROL VOLTAGE TRANSFORMER WITH SECONDARY PROTECTION FOR 120V CONTROL POWER TO FIELD LIGHTING EMERGENCY CABINET. COORDINATE INSTALLATION WITH MUSCO.
- PROVIDE AN OUTDOOR TEMPORARY GENERATOR TO POWER EMERGENCY LIGHTING LOADS UNTIL THE NEW GENERATOR SYSTEM IS INSTALLED. PROVIDE FUEL FOR GENERATOR AS REQUIRED.

WIRE AND CONDUIT SCHEDULE									
CIRC. MARK	QUAN. SETS	PHASE		NEUTRAL		GND. SIZE	CONDUIT		
		QUAN.	SIZE	QUAN.	SIZE		QUAN.	SIZE	
A3	1	3	12	.	.	12	1	3/4"	
A4	1	3	12	1	12	12	1	3/4"	
B3	1	3	10	.	.	10	1	3/4"	
B4	1	3	10	1	10	10	1	3/4"	
C3	1	3	8	.	.	8	1	1"	
C4	1	3	8	1	8	8	1	3/4"	
C5	1	3	8	1	4	10	1	1"	
D3	1	3	6	.	.	10	1	1"	
D4	1	3	6	1	6	10	1	1"	
D5	1	3	6	1	3	10	1	1"	
E3	1	3	4	.	.	8	1	1-1/4"	
E4	1	3	4	1	4	8	1	1-1/4"	
E5	1	3	4	1	4	4	1	1-1/4"	
F3	1	3	3	.	.	8	1	1-1/4"	
F4	1	3	3	1	3	8	1	1-1/4"	
F5	1	3	3	1	3	6	1	1-1/4"	
G3	1	3	2	.	.	6	1	1 1/2"	
G4	1	3	2	1	2	4	1	1-1/2"	
G5	1	3	2	1	2/0	6	1	1-1/2"	
H3	1	3	1	.	.	6	1	1-1/2"	
H4	1	3	1	1	1	4	1	1-1/2"	
H5	1	3	1	1	3/0	6	1	2"	
J3	1	3	1/0	.	.	4	1	2"	
J4	1	3	1/0	1	1/0	6	1	2"	
J5	1	3	1/0	1	1/0	4	1	2"	
K3	1	3	2/0	.	.	6	1	2"	
K4	1	3	2/0	1	2/0	4	1	2"	
K5	1	3	2/0	1	2/0	3	1	2"	
L3	1	3	3/0	.	.	6	1	2"	
L4	1	3	3/0	1	3/0	6	1	2"	
L5	1	3	3/0	1	3/0	3	1	2-1/2"	
L6	2	3	3/0	1	3/0	3	2	2-1/2"	
M3	1	3	4/0	.	.	4	1	2-1/2"	
M4	1	3	4/0	1	4/0	4	1	2-1/2"	
M5	1	3	4/0	2	4/0	4	1	2-1/2"	
M6	2	3	4/0	.	.	2	2	2-1/2"	
N3	1	3	250	.	.	4	1	2-1/2"	
N4	1	3	250	1	250	4	1	2-1/2"	
N5	2	3	250	.	.	2	2	2-1/2"	
N6	1	3	250	1	250	2	1	2-1/2"	
P3	1	3	300	.	.	4	1	2-1/2"	
P4	1	3	300	1	300	3	1	3"	
P5	1	3	300	2	300	4	1	3"	
Q3	1	3	350	.	.	4	1	3"	
Q4	1	3	350	1	350	2	1	3"	
Q5	2	3	350	.	.	1	2	3"	
Q6	2	3	350	1	350	2/0	2	3"	
Q7	2	3	350	1	350	1	2	3"	
Q8	3	3	350	1	350	2/0	3	3"	
R3	1	3	400	.	.	3	1	3"	
R4	1	3	400	1	400	2	1	3"	
R5	1	3	400	2	400	3	1	3-1/2"	
R6	3	3	400	.	.	2/0	3	3-1/2"	
R7	3	3	400	1	400	3/0	3	3-1/2"	
S3	1	3	500	.	.	3	1	3"	
S4	1	3	500	1	500	3	1	3-1/2"	
S5	1	3	500	1	500	4/0	1	4"	
S6	2	3	500	1	500	2/0	2	4"	
S7	3	3	500	1	500	4/0	3	4"	
T3	1	3	600	.	.	3	1	4"	
T4	1	3	600	1	600	1/0	1	4"	
T5	2	3	600	.	.	3/0	2	4"	
T6	3	3	600	1	600	3/0	3	4"	
T7	4	3	600	1	600	3/0	4	4"	
T8	5	3	600	1	600	3/0	5	4"	

SYMBOL SCHEDULE	
	SWITCHBOARD
	PANEL
	SELF CONTAINED UTILITY METER BASE
	UTILITY CT CABINET
	UTILITY POLE
	UTILITY METER. COORDINATE EXACT LOCATION WITH UTILITY COMPANY REQUIREMENTS
	TRANSFORMER
	MOTOR
	TRANSIENT VOLTAGE SURGE SUPPRESSOR VERIFY AND ADJUST BREAKER WIRE & CONDUIT SIZES TO MATCH RECOMMENDATIONS BY TVSS MANUFACTURER.
	FUSED DISCONNECT SWITCH
	ENCLOSED CIRCUIT BREAKER
	GENERATOR
	ATS-X - AUTOMATIC TRANSFER SWITCH MTS-X - AUTOMATIC TRANSFER SWITCH
	PROVIDE A SEPARATE #3/0 GROUNDING CONDUCTOR TO EACH OF THE FOLLOWING: - FOUNDATION FOOTER REBAR - UTILITY SIDE OF WATER METER SERVICE - BUILDING STEEL
	GROUND CONNECTIONS PER NEC
	GROUNDING COUNTERPOISE SYSTEM PER SPECIFICATIONS
	WIRE/CONDUIT REFERENCE
	2-HOUR FIRE RATED CONDUCTORS WITH INCREASED CONDUIT SIZE AS REQUIRED TO MEET A LISTED 2-HOUR RATED INSTALLATION, NEC AND MANUFACTURERS REQUIREMENTS.
	EQUIPMENT/FEEDER/WIRING/ETC - TO BE REMOVED
	FEEDER CIRCUIT GROUND FAULT RELAY. PROVIDE TESTING AS REQUIRED BY THE AHJ.
	CUSTOMER METERING PER SPECIFICATIONS. PROVIDE CATEGORY 6 CABLE TO LOCAL MDF/IDF IN 3/4" CONDUIT.
	INTEGRAL CONTACTOR

TRANSFORMER SCHEDULE								
TYPE/NO.	KVA	TYPE	PRI. VOLTS	SEC. VOLTS	PHASE	WIRES	ENCLOSURE	DEGREE C TEMP RISE
T-VL1	75	DRY	480	120/208	3	4	NEMA 1	150°
T-HL1	75	DRY	480	120/208	3	4	NEMA 1	150°

TRANSFER SWITCH SCHEDULE						
TYPE/NO.	SIZE AMPS	VOLTAGE SYSTEM	SWITCHED POLES	NEUTRAL	NEMA ENCLOSURE	NOTES
ATS-LS	100	277/480V	3	NON OVERLAP	NEMA 12	

ENCLOSED CIRCUIT BREAKER SCHEDULE								
TYPE/NO.	VOLT CLASS	AMPS	RATING	POLES	NEUTRAL	AIC	TYPE	NOTES
EC-ATS-LS	600	70	80%	3	SN	35KAIC	ELECTRONIC TRIP LSI	6,8

FUSED DISCONNECT SCHEDULE							
TYPE/NO.	VOLT CLASS	POLES	SIZE FUSE	SIZE FUSE	NEUTRAL	NEMA ENCLOSURE	NOTES
FS-ATS-LS	600	3	100	70	SN	NEMA 1	CLASS J

GENERATOR SCHEDULE											
TYPE/NO.	NOMINAL KW	SYSTEM VOLTAGE	PHASE	WIRE	ALTERNATOR	ALTERNATOR KW	ALTERNATOR KVA	MAX MOTOR STARTING KVA WITH PMG AT 90% SUSTAINED VOLTAGE	ENGINE	ELECTRONIC TRIP LSI CIRCUIT BREAKERS	NOTES
G1	50	277/480V	3	4	UCD2F	50	62.5	272	QSB5-G13	3P.70A - ATS-LS	6,7

MAROTTA /MAIN ARCHITECTS

WWW.MAROTTAMAIN.COM

SEAL:

THIS DRAWING IS THE PROPERTY OF THE FIRM. IT IS NOT TO BE REPRODUCED OR COPIED IN ANY FORM WITHOUT WRITTEN PERMISSION.

CONSULTANT:

MOORE ENGINEERING COMPANY

3637 Columbia Avenue, Lancaster, PA 17602  
P: 717.263.3141, F: 717.263.3142, E: info@mooreengineering.com

RENOVATIONS

J.P. MCCASKEY STADIUM PROJECTS

SCHOOL DISTRICT OF LANCASTER

445 N RESERVOIR ST, LANCASTER, PA 17602

ISSUE DATES

DATE	DESCRIPTION
03/05/2025	CONFORMED SET

PROJ #1

24-50L-03

DRAWN BY: A. NOLT

SHEET TITLE:

POWER RISER DIAGRAM

SHEET NUMBER:

E7.1

CONFORMED SET



3637 Columbia Avenue, Lancaster PA 17603  
P: 717 285 3141 MooreEngineering.com

**20**

# J.P. MCCASKEY STADIUM PROJECTS

<b>DATE:</b>	<b>DESCRIPTION:</b>
03/05/2025	CONFORMED SET

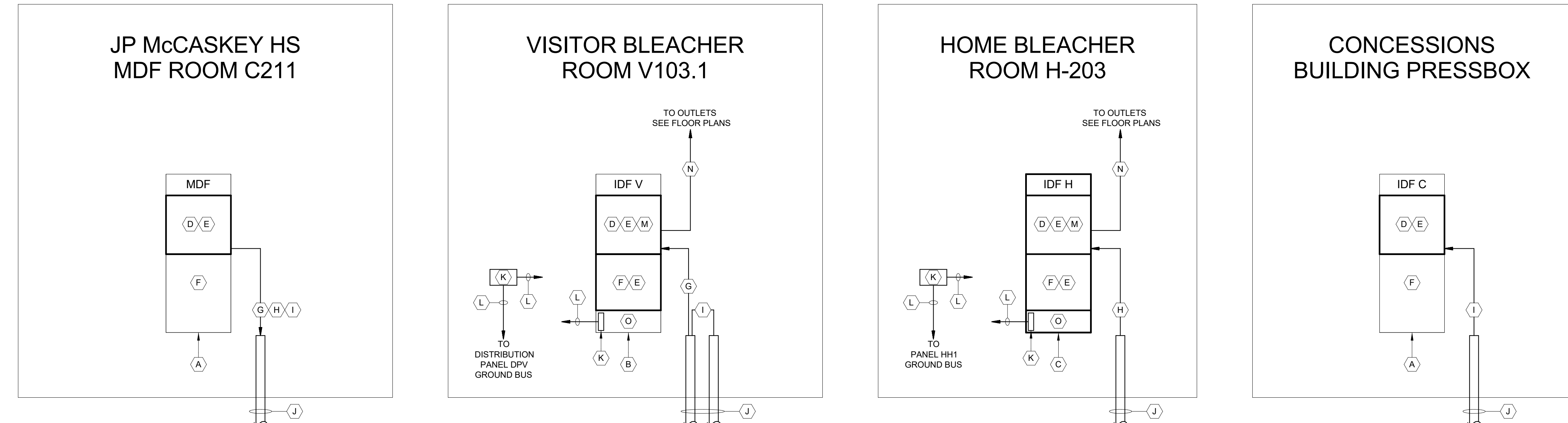
DJ #: 24-SDL-03      DRAWN BY: A. NOL

**SHEET NUMBER:**

## CONFORMED SET

1. THESE PLANS INDICATE GENERAL PATHWAY REQUIREMENTS. PROVIDE ADDITIONAL SLEEVES, CONDUIT AND CABLE TRAY AS REQUIRED.
2. CABLE TRAY, CONDUIT AND SLEEVES ARE TO BE USED FOR LOW VOLTAGE AND FIBER OPTIC CABLE SUPPORT AND PROTECTION.
3. COORDINATE RACEWAY AND SLEEVE INSTALLATIONS WITH ALL OTHER SYSTEMS.
4. PROVIDE RACEWAYS FOR ALL SYSTEM CABLING IN ALL OPEN STRUCTURE CEILING SPACES.
5. PENETRATIONS IN FIRE RATED PARTITIONS SHALL BE SEALED TO MAINTAIN THE FIRE INTEGRITY OF THE ASSEMBLY. FIRE STOPPING SHALL BE THE SAME RATING AS THE ASSEMBLY BEING SEALED.
6. ALL CABLE TRAY SHALL BE 12" WIDE UNLESS OTHERWISE NOTED.
7. PROVIDE JACKETED ARMORED FIBER OPTIC CABLES FOR ALL INDOOR/OUTDOOR FIBER OPTIC CABLES AS SPECIFIED.

- A. EXISTING MDF/IDF RACK.
- B. EXISTING RELOCATED IDF RACK.
- C. IDF RACK PER SPECIFICATIONS AND SCHEDULES.
- D. FIBER OPTIC ENCLOSURES WITH FIBER OPTIC ADAPTERS PER SCHEDULES
- E. HORIZONTAL WIRE MANAGEMENT, PROVIDE AS REQUIRED FOR RACK.
- F. SWITCHES & NETWORK EQUIPMENT (NIC).
- G. 12 STRAND SINGLE MODE FIBER OPTIC CABLE BETWEEN MDF RACK AND VISITOR BLEACHER IDF V RACK.
- H. 12 STRAND SINGLE MODE FIBER OPTIC CABLE BETWEEN MDF RACK AND HOME BLEACHER IDF H RACK
- I. 12 STRAND SINGLE MODE FIBER OPTIC CABLE BETWEEN MDF RACK AND CONCESSIONS PRESSBOX IDF C RACK
- J. CONDUTS PER SITE PLAN.
- K. GROUND BUS. REFER TO SPECIFICATIONS FOR SIZES AND REQUIREMENTS.
- L. GROUND CABLES. REFER TO SPECIFICATIONS FOR SIZES AND REQUIREMENTS.
- M. CATEGORY 6 UTP RACK MOUNTED PATCH PANELS. PROVIDE PORT QUANTITY REQUIRED + 20% SPARE.
- N. CATEGORY 6 UTP CABLES TO EACH VOICE/DATA JACK. (SEE FLOOR PLANS)
- O. UPS (NIC).



1 TELECOMMUNICATIONS RISER DIAGRAM  
E7.2 NO SCALE



[illegible]