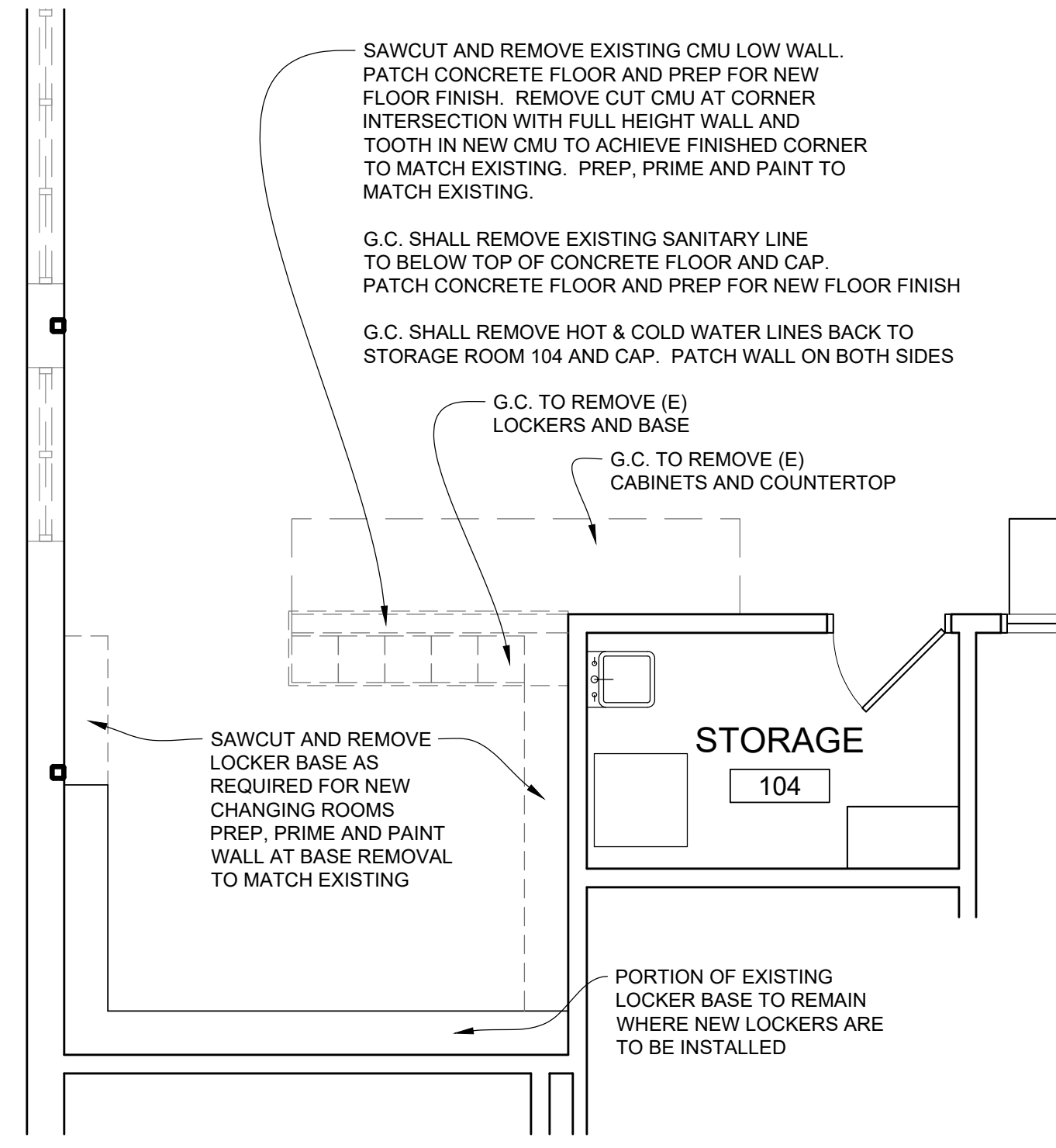
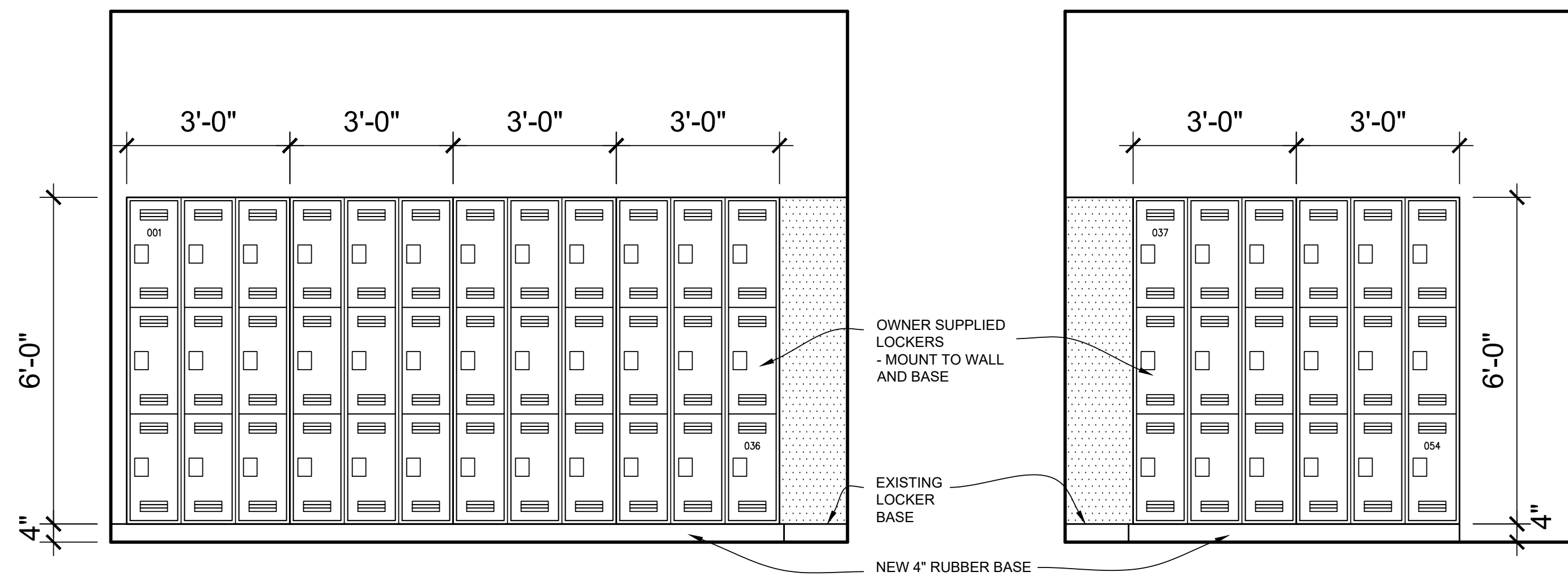


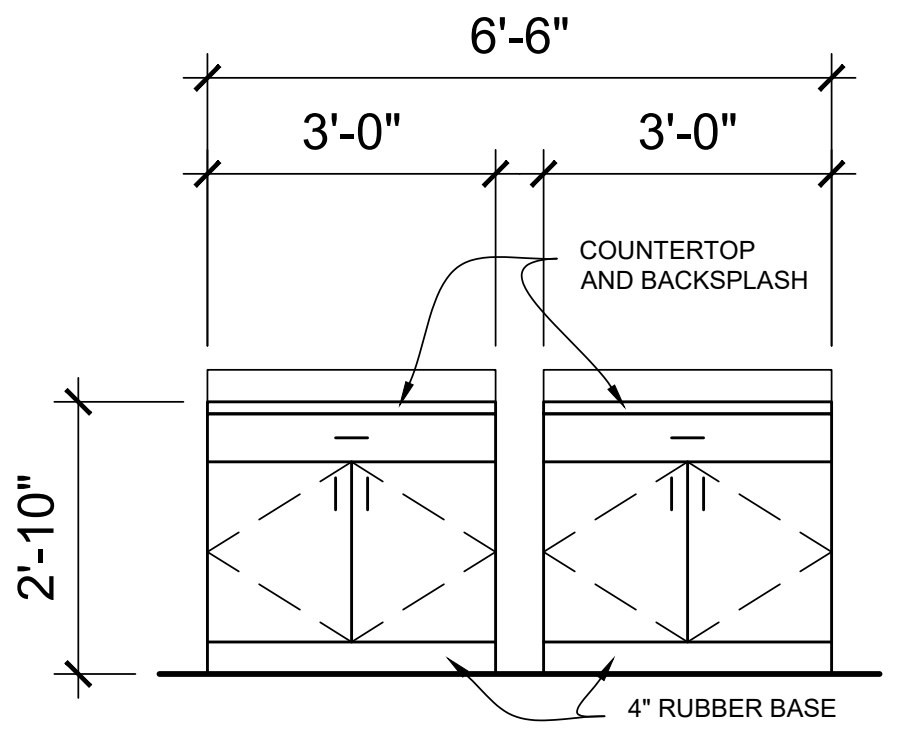
1 PROPOSED NEW FLOOR PLAN  
A100 HEALTH CAREERS 1/4" = 1'-0"



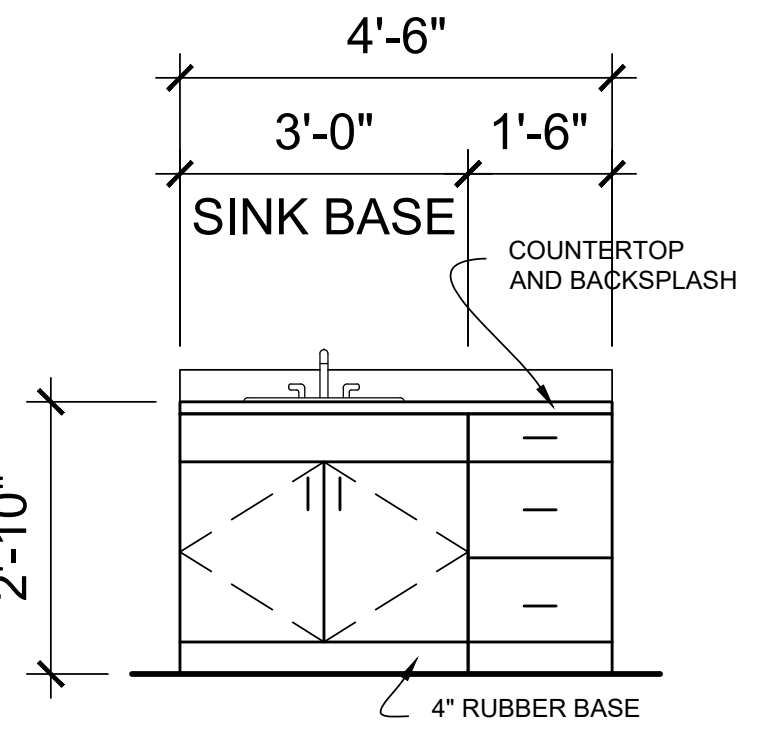
2 DEMOLITION PLAN  
A100 HEALTH CAREERS 1/4" = 1'-0"



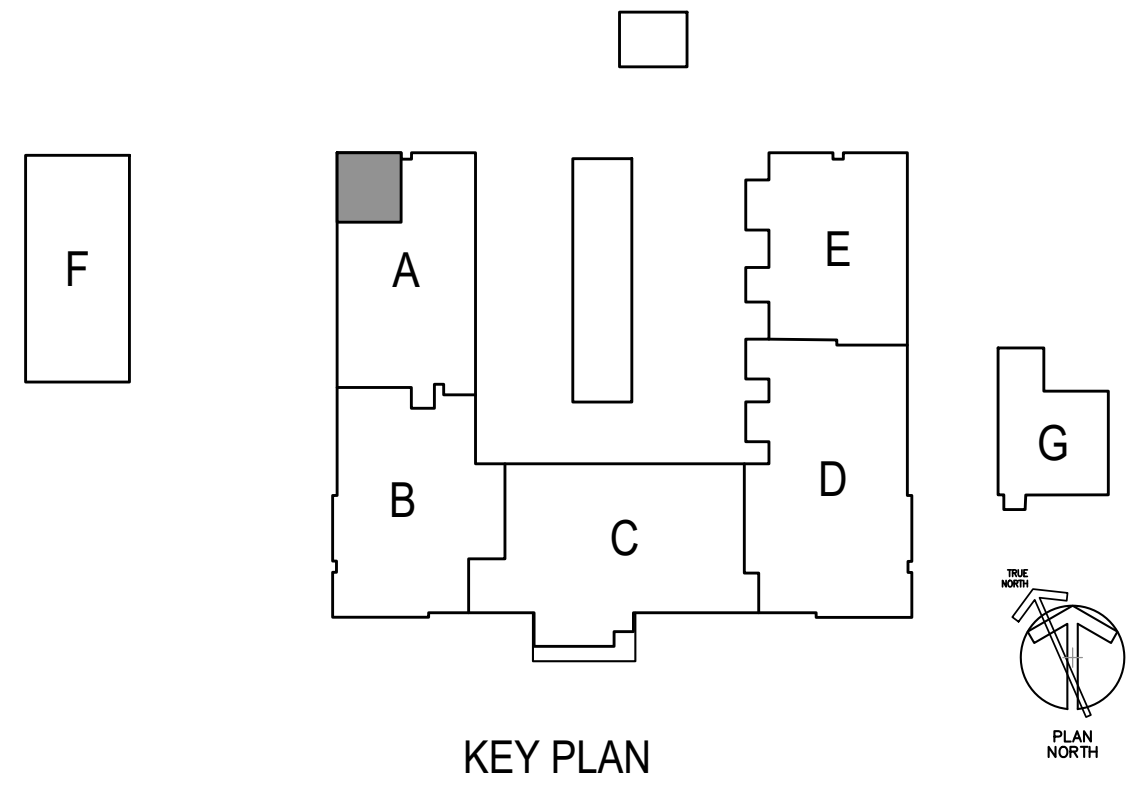
5 TYP. LOCKER ELEVATION  
A100 HEALTH CAREERS 1/2" = 1'-0"



3 MILLWORK ELEVATION  
A100 HEALTH CAREERS 1/2" = 1'-0"



4 MILLWORK ELEVATION  
A100 HEALTH CAREERS 1/2" = 1'-0"



KEY PLAN

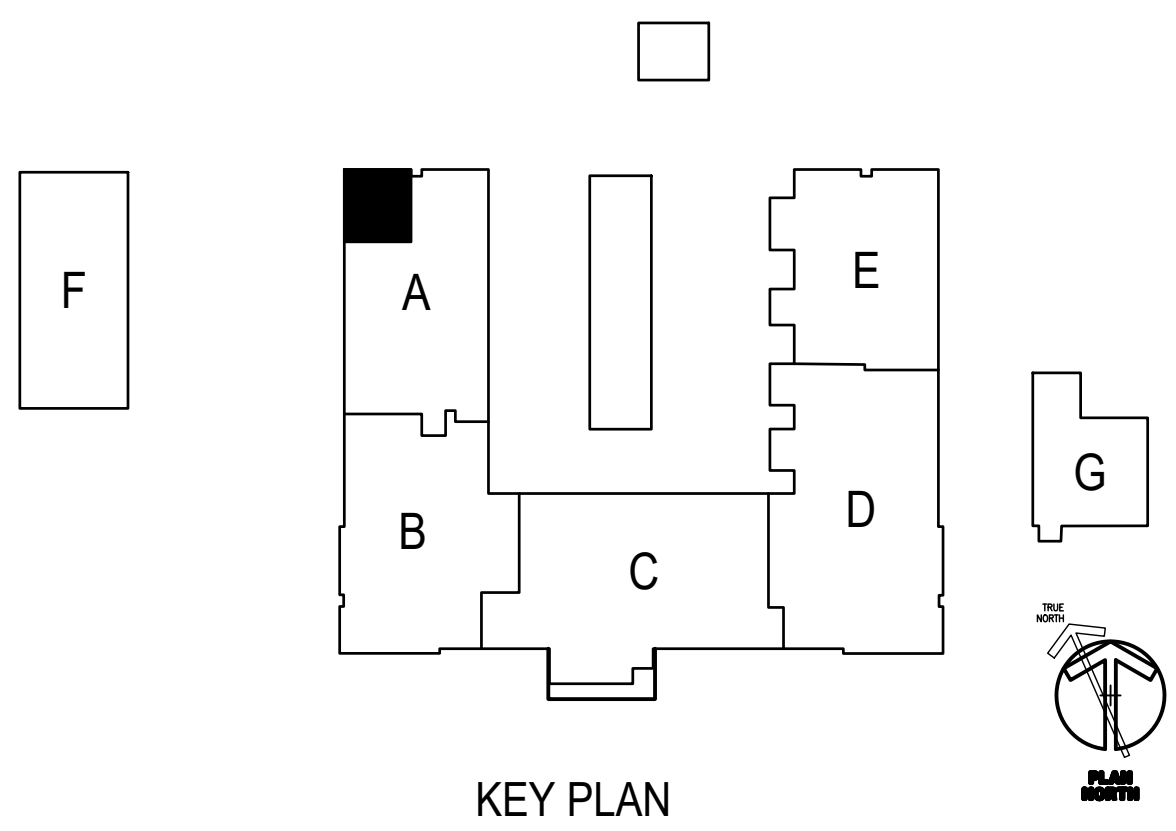
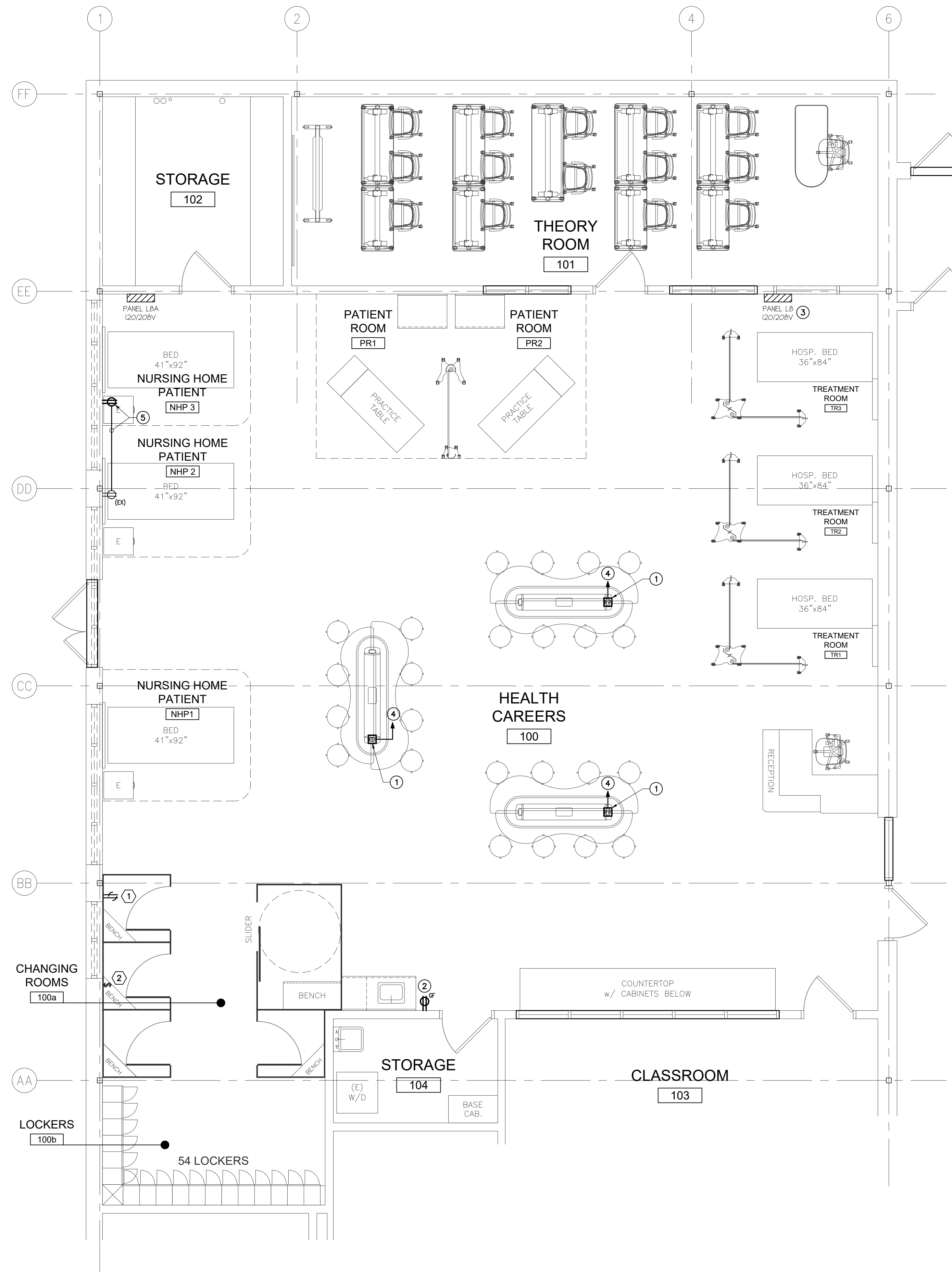
NO.	DATE	REVISION	BY

PETER M. MEDICA RA016195 MEMBER OF THE AMERICAN INSTITUTE OF ARCHITECTS <b>BMA</b> <b>BONNETT MEDICA ASSOCIATES INCORPORATED</b> ARCHITECTS • PLANNERS ENGINEERS • PROJECT MANAGERS 1242 WEST CHESTER PIKE • SUITE 11 WEST CHESTER, PA 19382 TELEPHONE 610-368-6678		<b>SYSTEMS DESIGN ENGINEERING, INC</b> 1032 JAMES DR. LEESPORT, PA 19533 PHONE: 610.916.8500 FAX: 610.916.8501 BOYERTOWN, PA 610.369.1319 SCHUYLKILL HAVEN, PA 570.385.5549 <b>PROPOSED FLOOR PLAN</b> CLASSROOM RENOVATIONS - WEST CAMPUS HEALTH CAREERS BERKS CAREER & TECHNOLOGY CENTER 1057 COUNTY WELFARE ROAD LEESPORT, PA 19533 SUITE IN BERKS COUNTY, PA	
DRAWN BY dmc	CHECKED PMM	APPROVED .	CADD FILE NAME 25116.00a100.dwg
DATE 01/30/2026	SCALE AS NOTED	DRAWING NUMBER A100	

Copyright 2026, Systems Design Engineering, Inc., L.L.C. All rights reserved. No part of this drawing may be reproduced without the written permission of Systems Design Engineering, Inc., L.L.C.



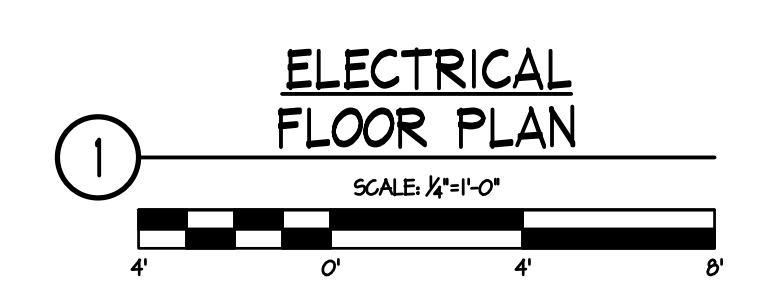


**KEYED DEMOLITION NOTES**

- ① DISCONNECT AND REMOVE EXISTING RECEPTACLE, REMOVE OUTLET BOX, CONDUIT AND WIRING BACK TO NEXT OUTLET. COVER OPENING IN OUTLET BOX.
- ② DISCONNECT AND REMOVE SWITCH, REMOVE OUTLET BOX AND CONDUIT. REMOVE WIRING TO LIGHT FIXTURE, RECONNECT LIGHT FIXTURES TO BE CONTROLLED WITH MAIN ROOM LIGHT FIXTURES.

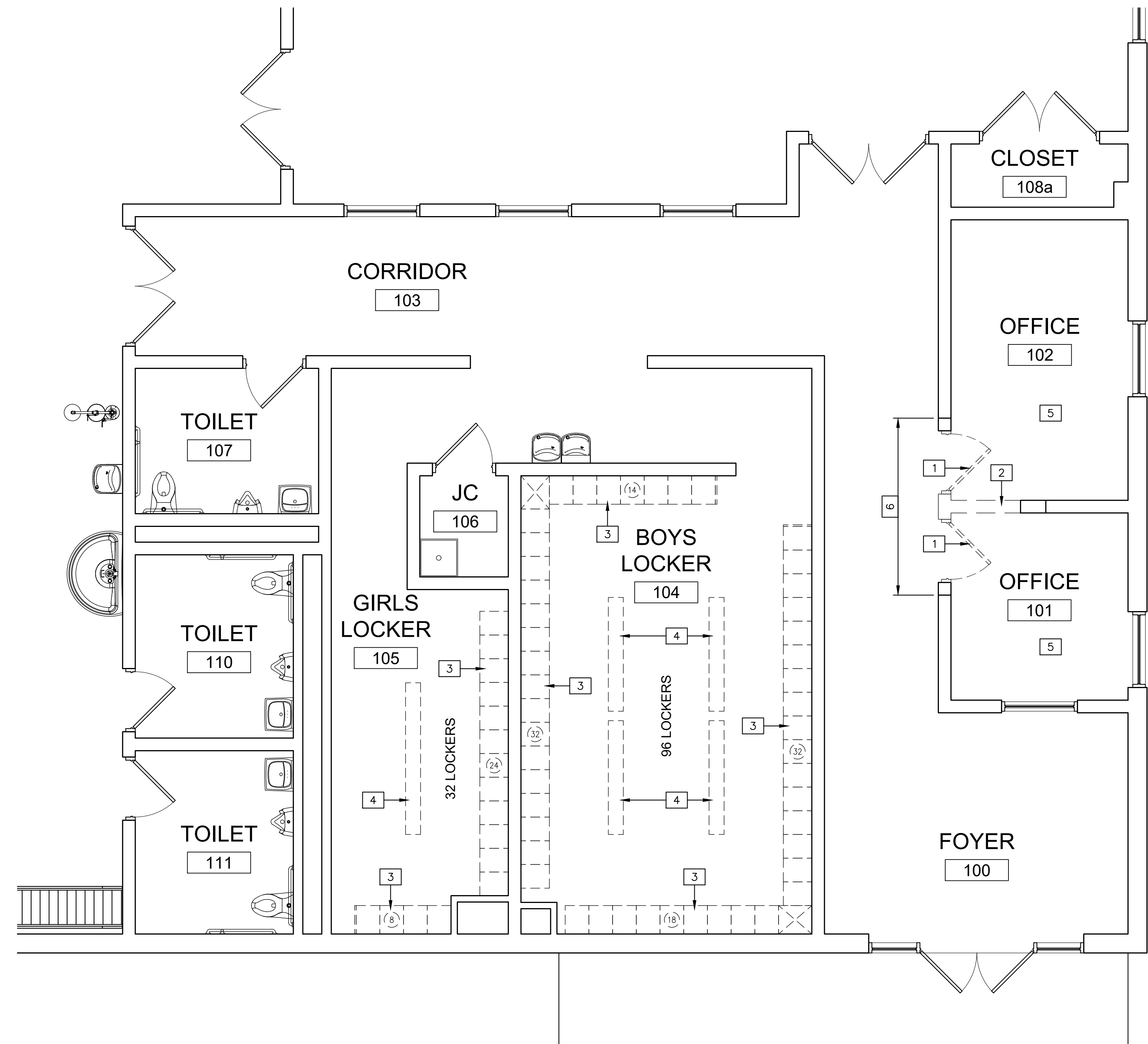
**KEYED NEW WORK NOTES**

- ① POWER POLE FURNISHED AND INSTALLED BY GC WITH NURSE STATION. EG SHALL WIRE THROUGH POWER POLE WITH MC CABLE TO RECEPTACLES. EG SHALL FURNISH AND INSTALL SIX (6) DECORA STYLE RECEPTACLES IN EACH NURSE STATION.
- ② REPLACE EXISTING RECEPTACLE WITH NEW GFCI RECEPTACLE. PROVIDE NEW COVERPLATE.
- ③ FURNISH AND INSTALL THREE (3) NEW 20A, 1P CIRCUIT BREAKERS IN EXISTING PANEL L8 (CUTLER-HAMMER PRL30 TYPE).
- ④ 2 #12 @ 1#26, 3/4" TO PANEL L8 AND CONNECT TO 20A, 1P CIRCUIT BREAKER. REVISE PANEL DIRECTORY TO REFLECT WORK.
- ⑤ FURNISH AND INSTALL DOUBLE DUPLEX RECEPTACLE IN SURFACE CAST BOX WITH COVER PLATE, AND 2 #12 @ 1#26, 3/4" TO EXISTING RECEPTACLE AND CONNECT TO EXISTING CIRCUIT.



© COPYRIGHT 2024, Systems Design Engineering, Inc. - Q:\Projects\Health Care\Technology Center\2510485-0040-Health Docx\CA Work\01 - Design\Plan\Drawings\Electrical\E101.dwg - March 11, 2024 9:25 am by ChauK

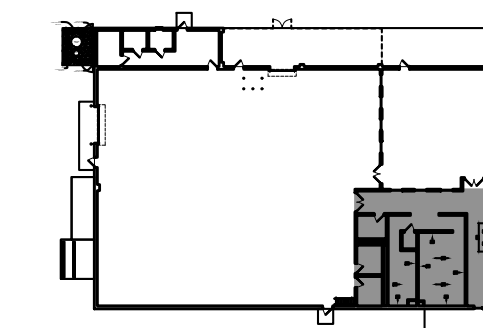
PETER M. MEDICA RA016195 MEMBER OF THE AMERICAN INSTITUTE OF ARCHITECTS BONNETT MEDICA ASSOCIATES INCORPORATED ARCHITECTS • PLANNERS ENGINEERS • PROJECT MANAGERS 1242 WEST CHESTER PIKE • SUITE 11 WEST CHESTER, PA 19382 TELEPHONE 610-368-6678		<b>SYSTEMS DESIGN ENGINEERING, INC</b> 1032 JAMES DR., LEESPORT, PA 19533 BOYERTOWN, PA 610.349.1319 PHONE: 610.916.8500 FAX: 610.916.8501 SCHUYLKILL HAVEN, PA 570.385.5549								
<b>ELECTRICAL FLOOR PLAN</b> CLASSROOM RENOVATIONS - WEST CAMPUS HEALTH CAREERS BERKS CAREER & TECHNOLOGY CENTER 1057 COUNTY WELFARE ROAD LEESPORT, PA 19533 SUITE 11 BERKS COUNTY, PA.		<table border="1" style="width: 100%; border-collapse: collapse;"> <thead> <tr> <th>NO.</th> <th>DATE</th> <th>REVISION</th> <th>BY</th> </tr> </thead> <tbody> <tr> <td> </td> <td> </td> <td> </td> <td> </td> </tr> </tbody> </table>	NO.	DATE	REVISION	BY				
NO.	DATE	REVISION	BY							
DRAWN BY: CAR CHECKED: SG DATE: 03/10/2026	APPROVED: SG SCALE: AS NOTED	CAD FILE NAME: E101.dwg DRAWING NUMBER: D-25-0485-0040-E101								



**1** DEMOLITION FLOOR PLAN  
 A100 WELDING SHOP 1/4" = 1'-0"

**DEMOLITION KEYNOTES:**

- 1 REMOVE DOOR & DOOR FRAME. PROTECT ADJACENT SURFACES AND PATCH WHERE REQUIRED WITH MATERIALS EXACTLY MATCHING THOSE MARRIED BY THE REMOVAL.
- 2 SAW CUT AND REMOVE PORTION OF INTERIOR CMU PARTITION INCLUDING BELOW SLAB PORTION AND AS REQUIRED TO TOOTH-IN NEW CMU.
- 3 REMOVE AND RELOCATE EXISTING METAL LOCKERS AS SHOWN ON PLAN. PROVIDE WALL ANCHORS AND CLOSURE PANELS FOR NEW CONFIGURATION. COLOR OF CLOSURE PANELS SHALL MATCH EXISTING. REMOVE ALL EXISTING LOCKER WALL ANCHORS AND ACCESSORIES. PATCH HOLES, PREP AND PAINT WALLS.
- 4 REMOVE EXISTING BENCH AND SUPPORT LEGS. PATCH HOLES IN FLOOR.
- 5 REMOVE ALL EXISTING ACOUSTIC CEILING TILES AND SUSPENDED CEILING GRIDS WHERE NEW CEILINGS ARE SHOWN ON THE REFLECTED CEILING PLAN DRAWINGS. PROTECT ALL ADJACENT SURFACES WHICH ARE TO REMAIN.
- 6 SAW CUT AND REMOVE PORTION OF INTERIOR PARTITION ABOVE DOOR OPENING INCLUDING AS REQUIRED TO TOOTH-IN NEW CMU.



KEY PLAN

N.T.S.

NO.	DATE	REVISION	BY

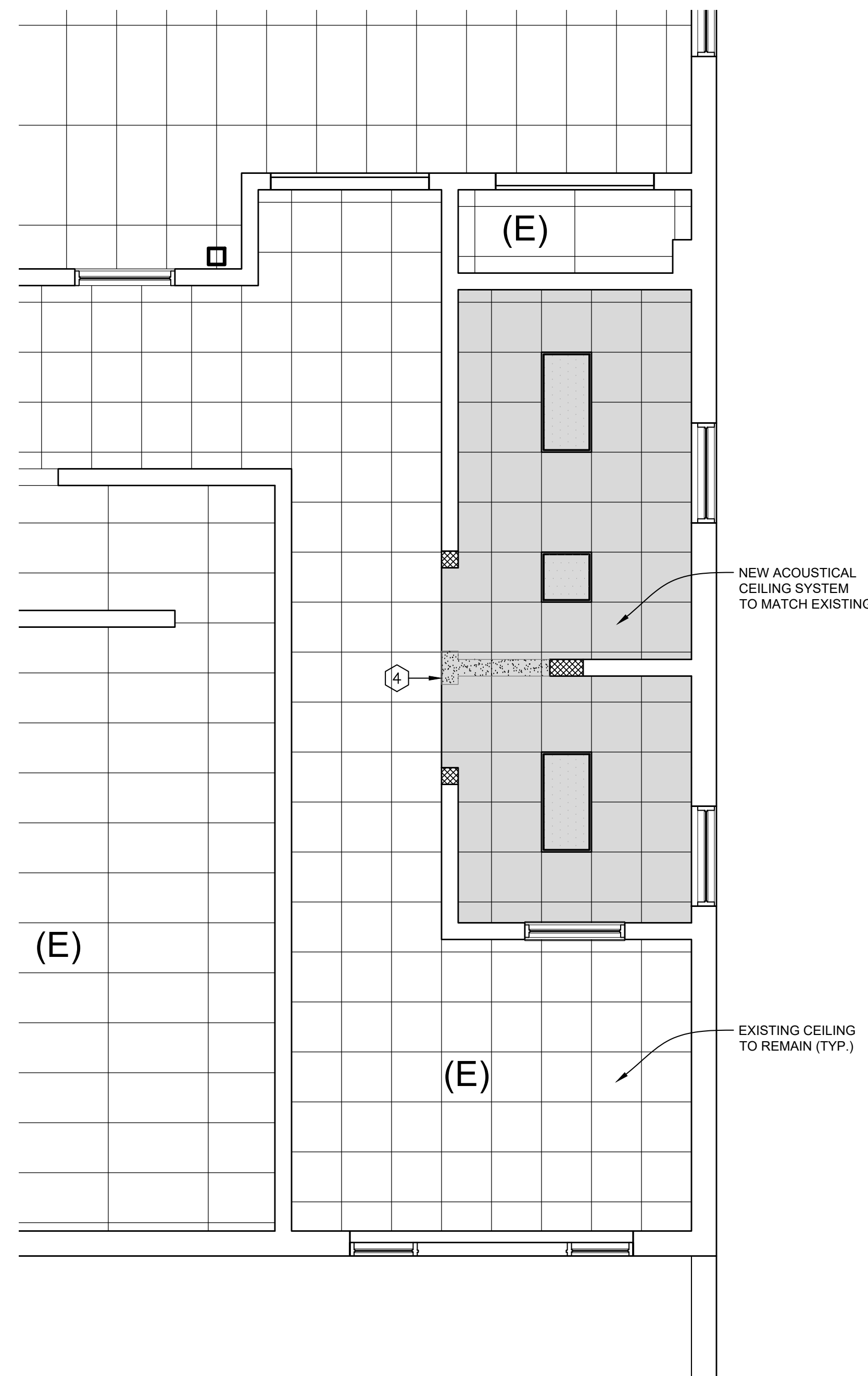
PETER M. MEDICA RA016195  
 MEMBER OF THE AMERICAN INSTITUTE OF ARCHITECTS  
**BMA**  
 BONNETT MEDICA ASSOCIATES INCORPORATED  
 ARCHITECTS • PLANNERS  
 ENGINEERS • PROJECT MANAGERS  
 1242 WEST CHESTER PIKE • SUITE 111  
 WEST CHESTER, PA 19382  
 TELEPHONE 610 • 368 • 6678

**SYSTEMS DESIGN ENGINEERING, INC**  
 1032 JAMES DR. LEESPORT, PA 19533 BOYERTOWN, PA 610.349.1319  
 PHONE: 610.916.8500 FAX: 610.916.8501 SCHUYLKILL HAVEN, PA 570.385.5549  
**DEMOLITION FLOOR PLAN**  
 LOCKER ROOM ALTERATIONS - WEST CAMPUS WELDING SHOP  
 BERKS CAREER & TECHNOLOGY CENTER  
 1057 COUNTY WELFARE ROAD  
 LEESPORT, PA 19533  
 SITUATE IN BERKS COUNTY, PA  
 DRAWN BY: dmc CHECKED: PMM APPROVED: . CADW FILE NAME: 25115.00cd100.dwg  
 DATE: 01/06/2026 SCALE: AS NOTED DRAWING NUMBER: AD100

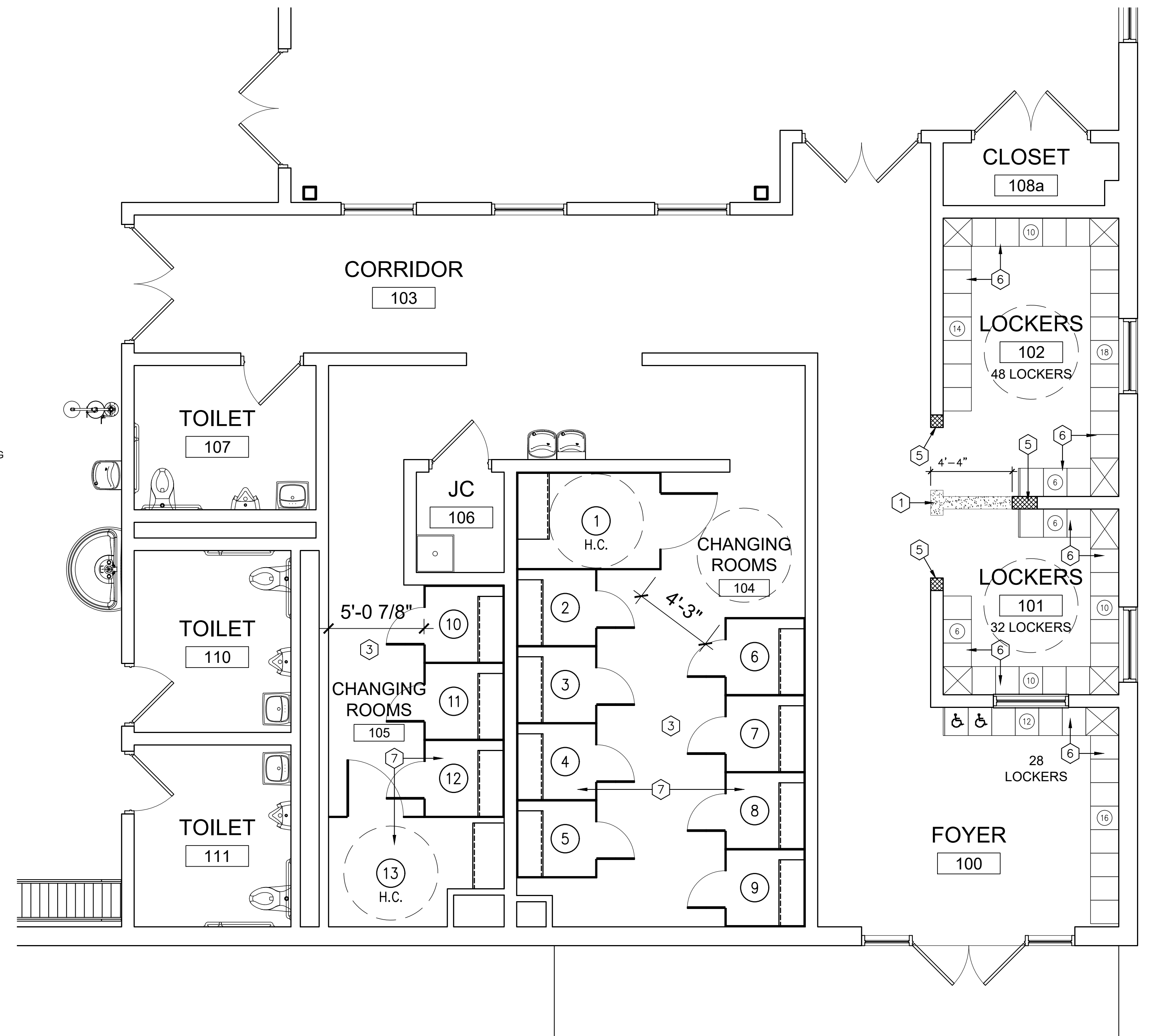
©COPYRIGHT 2026, Systems Design Engineering, Inc., L.L.C. CaddProject11.2025.125115.00 - West Campus Welding Shop - Architecture.dwg - March 28, 2026 4:55 pm by ddesign

**NEW CONSTRUCTION KEYNOTES:**

- 1 PATCH CONCRETE FLOOR AT VOID FROM CMU REMOVAL WITH CONCRETE FINISHED FLUSH WITH ADJACENT CONCRETE. MATCH EXISTING CONCRETE TEXTURE.
- 2 EPOXY FLOOR AND BASE: PREPARE EXISTING CONCRETE FLOORS AND PROVIDE NEW EPOXY FLOORING AND INTEGRAL 4 INCH COVE BASE IN THE FOLLOWING ROOMS IN ACCORDANCE WITH CONTRACT DOCUMENTS:
  - CORRIDOR 103
  - TOILET 107
  - CHANGING ROOM 105
  - CHANGING ROOM 104
  - LOCKERS 102
  - LOCKERS 101
  - FOYER 100
- 3 PREP AND PAINT CMU WALLS.
- 4 TIE-IN NEW ACOUSTICAL CEILING TILES AND GRID INTO EXISTING CORRIDOR ACOUSTICAL TILE SYSTEM. REPLACE DAMAGED TILES AND GRID AS REQUIRED.
- 5 TOOTH IN CMU AT LOCATIONS OR WALL AND HMF REMOVAL. PREP AND PAINT NEW CMU TO MATCH EXISTING.
- 6 NEW LOCATION OF RELOCATED METAL LOCKERS. COORDINATE IDENTIFICATION NUMBERING WITH OWNER. NEW PROVIDE CLOSURE PANELS, COLOR TO MATCH EXISTING.
- 7 PROVIDE CHANGING ROOMS IN ACCORDANCE WITH SPECIFICATIONS.

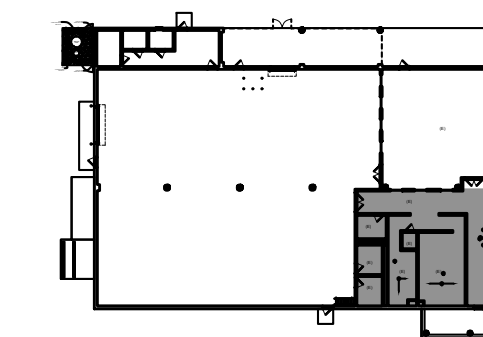


2 PARTIAL REFLECTED CEILING PLAN  
A100 WELDING SHOP 1/4" = 1'-0"

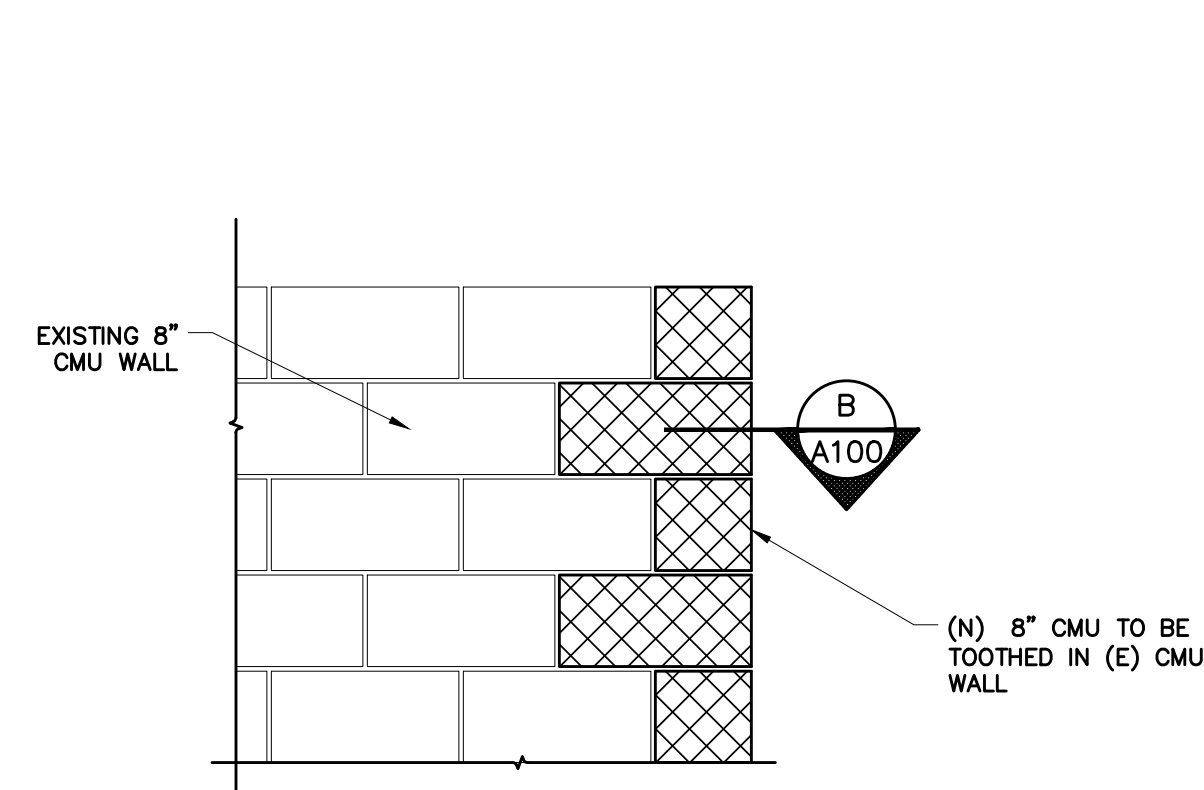


1 PROPOSED FLOOR PLAN  
A100 WELDING SHOP 1/4" = 1'-0"

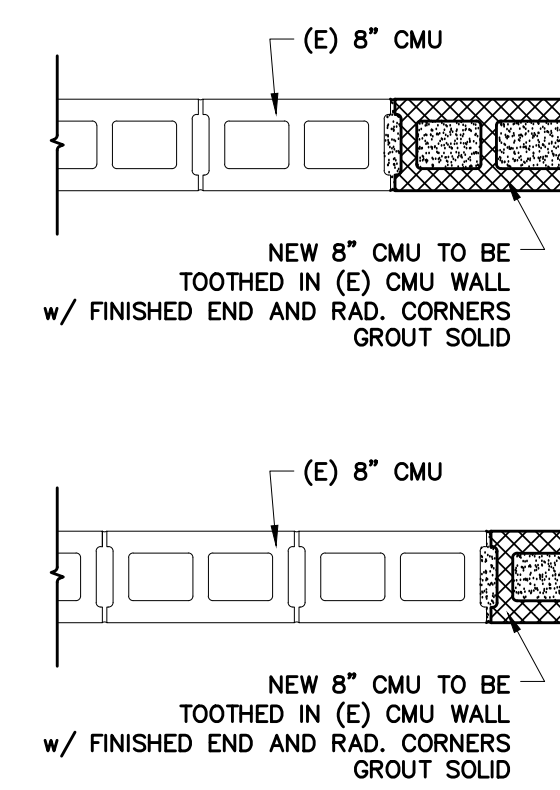
13 CHANGING ROOMS  
108 LOCKERS



KEY PLAN  
N.T.S.



CMU WALL ELEV.  
SCALE: 3/4"=1'-0" A100



PLAN DETAIL  
SCALE: 3/4"=1'-0" B A100

PETER M. MEDICA RA016195  
MEMBER OF THE AMERICAN INSTITUTE OF ARCHITECTS

**BMA**  
BONNETT MEDICA ASSOCIATES INCORPORATED  
ARCHITECTS • PLANNERS  
ENGINEERS • PROJECT MANAGERS

1242 WEST CHESTER PIKE • SUITE 11  
WEST CHESTER, PA 19382  
TELEPHONE 610 • 368 • 6678

NO.	DATE	REVISION	BY

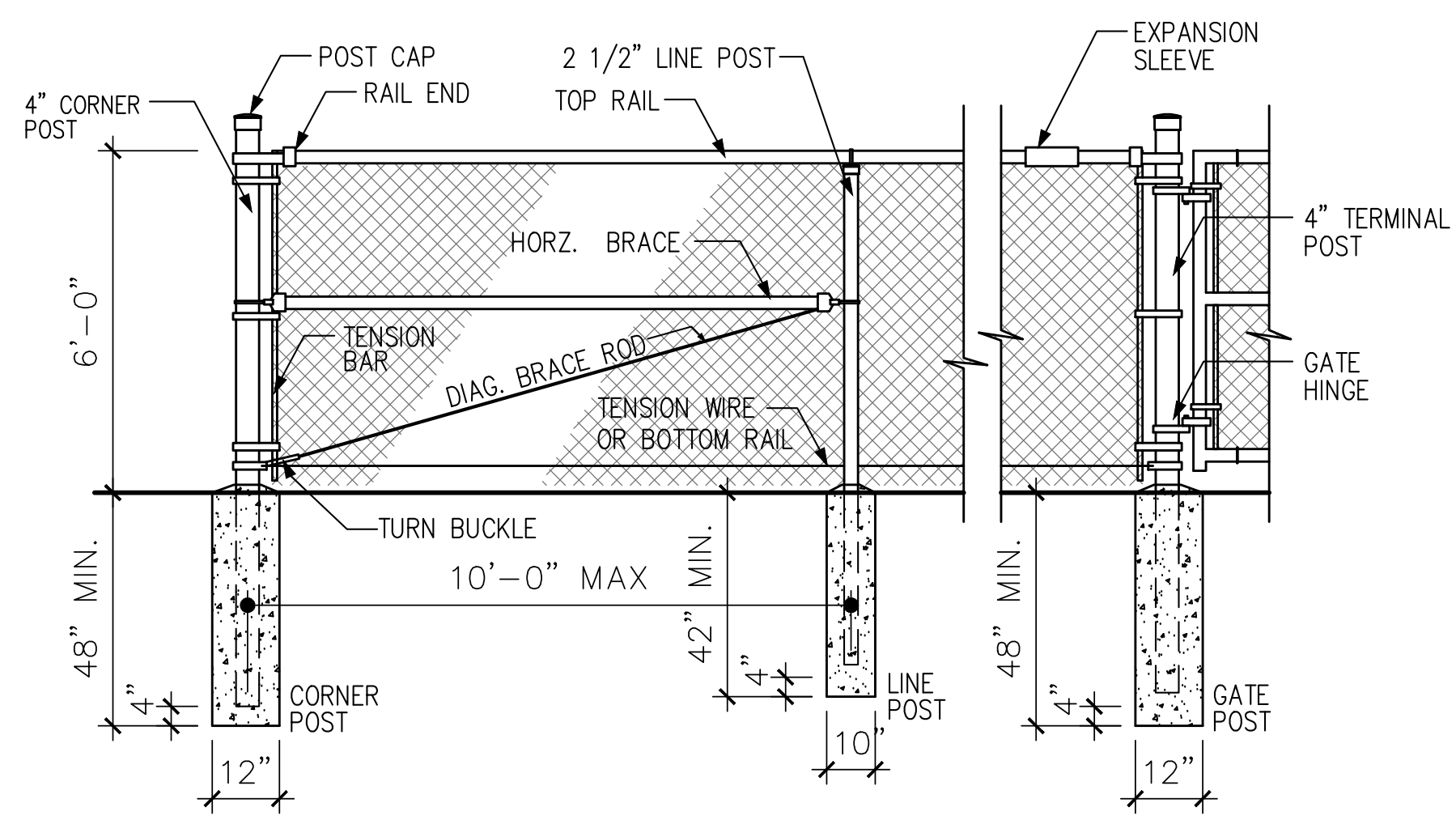
**SD E** SYSTEMS DESIGN ENGINEERING, INC  
1032 JAMES DR. LEESPORT, PA 19533 BOYERTOWN, PA 610.349.1319  
PHONE: 610.916.8500 FAX: 610.916.8501 SCHUYLKILL HAVEN, PA 570.385.5549

**PROPOSED NEW FLOOR PLAN**  
LOCKER ROOM ALTERATIONS - WEST CAMPUS WELDING SHOP  
BERKS CAREER & TECHNOLOGY CENTER  
1057 COUNTY WELFARE ROAD  
LEESPORT, PA 19533  
SITUAIE IN BERKS COUNTY, PA

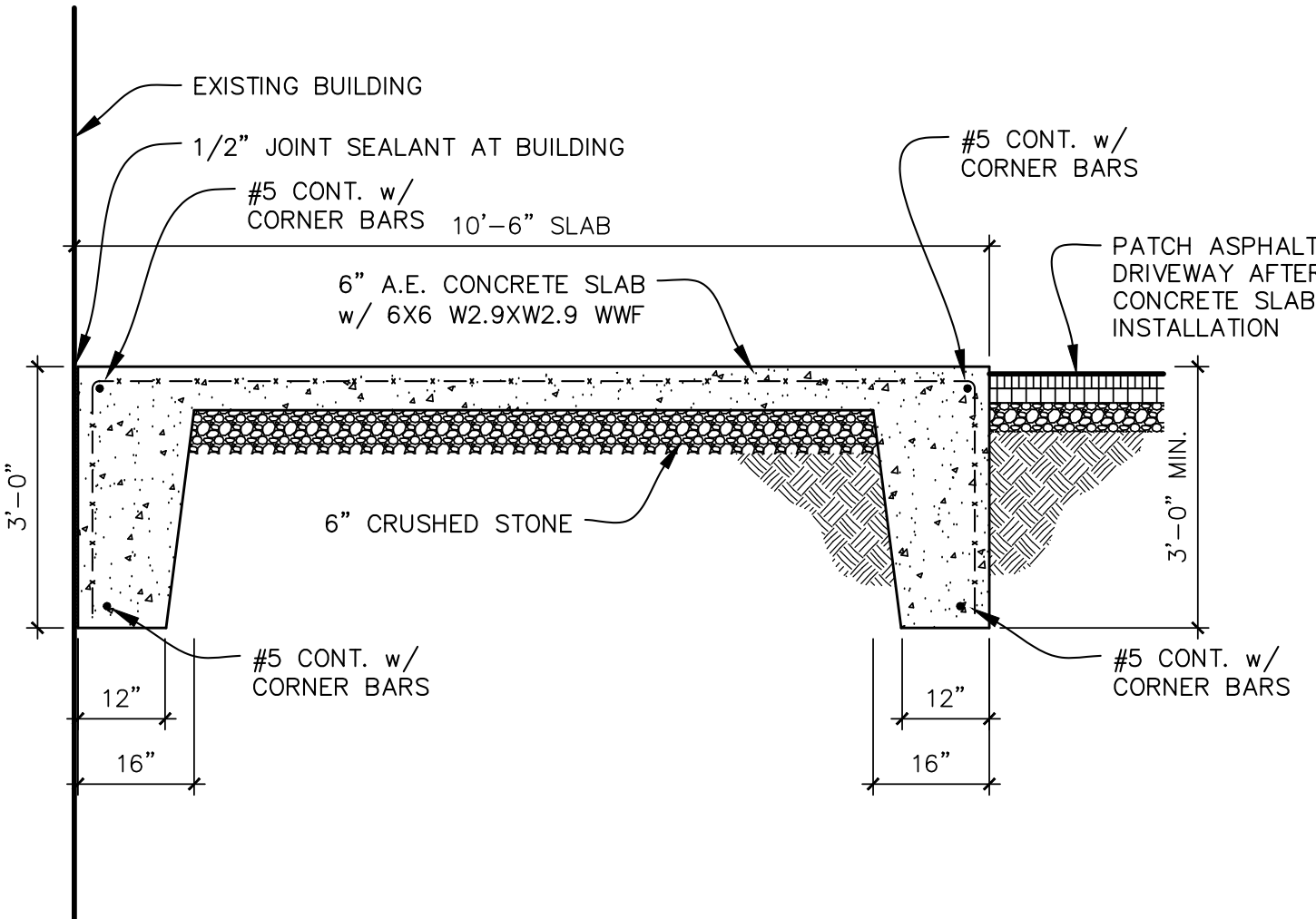
DRAWN BY dmc	CHECKED PMM	APPROVED .	CADD FILE NAME 25115.00c100.dwg
DATE 01/06/2026	SCALE AS NOTED	DRAWING NUMBER A100	

©Copyright 2024, Systems Design Engineering, Inc., L.P. CaddProject\2025\25115.00 - Welding Shop Architectural\25115.00c100.dwg - March 25, 2024, 8:37 pm by stobart

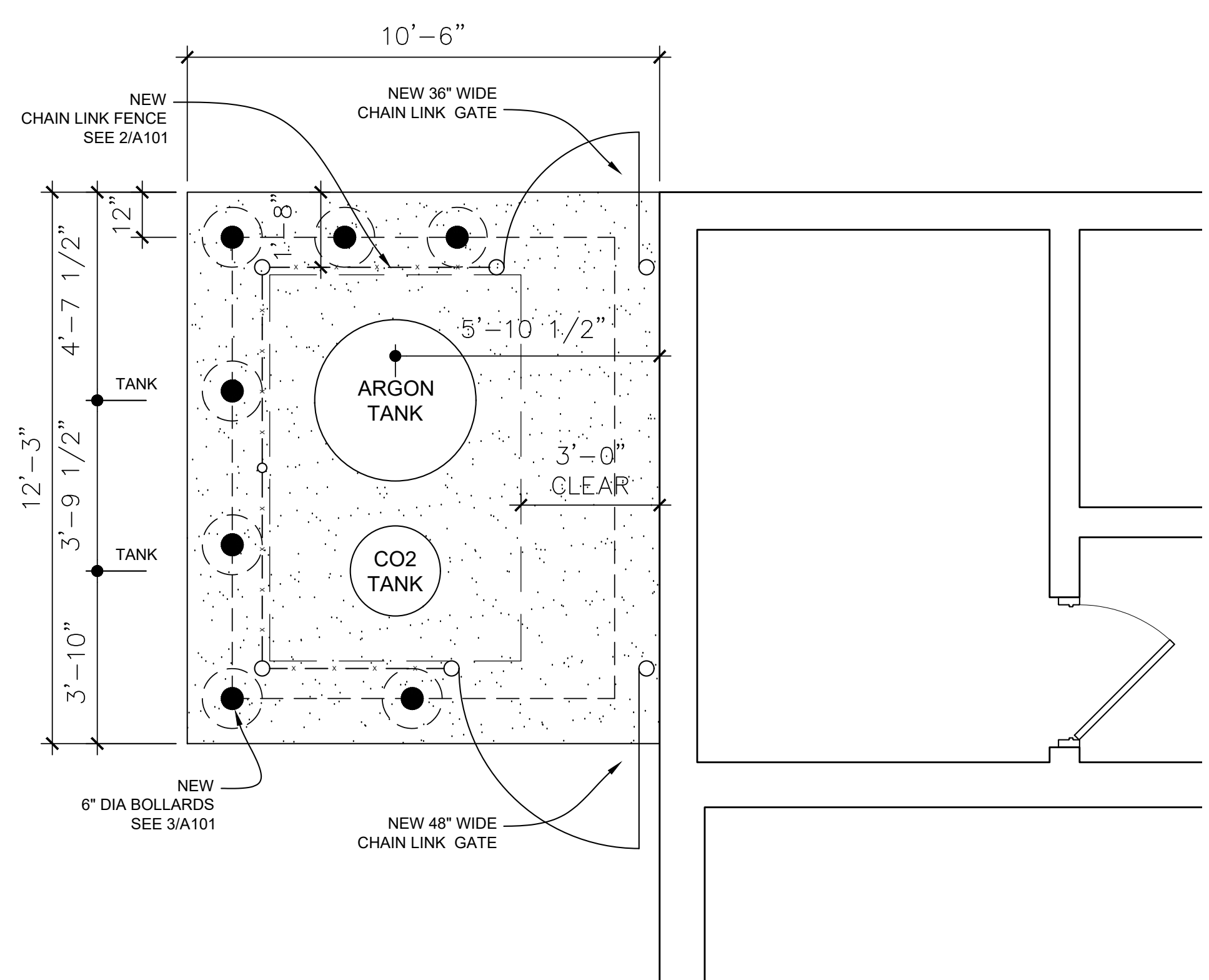
NOTE:  
FOR FENCES 5'-0" & TALLER A HORZ. OR  
DIAG. BRACE OR BOTH, IS USED FOR  
GREATER STABILITY. POST SPACING SHOULD  
BE EQUIDISTANT & SHOULD NOT EXCEED  
10'-0" O.C.



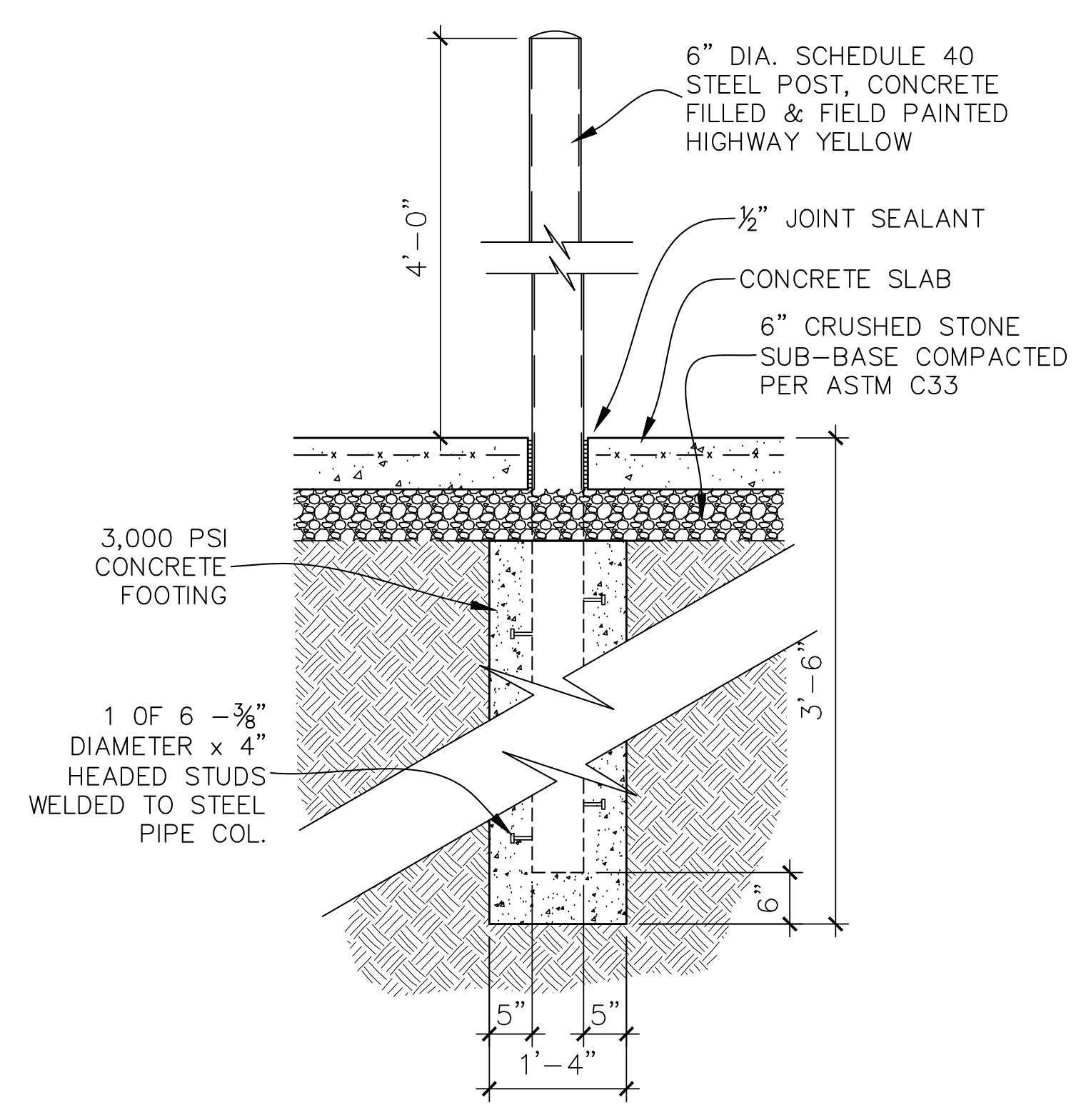
2 FENCE DETAIL  
A101 N.T.S.



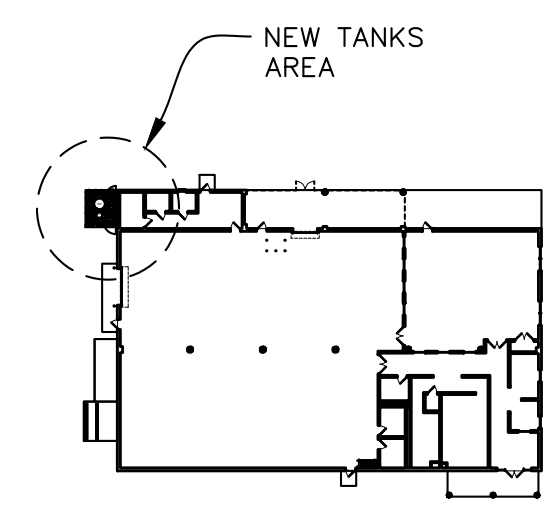
3 TURN-DOWN SLAB DETAIL  
A101 1 1/2" = 1'-0"



1 PROPOSED FLOOR PLAN  
A100 WELDING SHOP 1/4" = 1'-0"



3 FENCE DETAIL  
A101 N.T.S.



KEY PLAN  
N.T.S.

NO.	DATE	REVISION	BY

PETER M. MEDICA RA016195  
MEMBER OF THE AMERICAN INSTITUTE OF ARCHITECTS  
**BMA**  
BONNETT MEDICA ASSOCIATES INCORPORATED  
ARCHITECTS • PLANNERS  
ENGINEERS • PROJECT MANAGERS  
1242 WEST CHESTER PIKE • SUITE 11  
WEST CHESTER, PA 19382  
TELEPHONE 610 • 368 • 6678

**SD E** SYSTEMS DESIGN ENGINEERING, INC  
1032 JAMES DR. LEESPORT, PA 19533 BOYERTOWN, PA 610.349.1319  
PHONE: 610.916.8500 FAX: 610.916.8501 SCHUYLKILL HAVEN, PA 570.385.5549  
**NEW OUTSIDE TANK ENCLOSURE**  
LOCKER ROOM ALTERATIONS - WEST CAMPUS WELDING SHOP  
BERKS CAREER & TECHNOLOGY CENTER  
1057 COUNTY WELFARE ROAD  
LEESPORT, PA 19533  
SITUATE IN BERKS COUNTY, PA  
DRAWN BY: dmc CHECKED: PMM APPROVED: . CADD FILE NAME: 25115.00c101.dwg  
DATE: 01/06/2026 SCALE: AS NOTED DRAWING NUMBER: A101

©COPYRIGHT 2026, Systems Design Engineering, Inc., 114 Coddridge Street, West Chester, PA 19382. All rights reserved. 25115.00c101.dwg - March 25, 2026 8:27 pm by sduffy

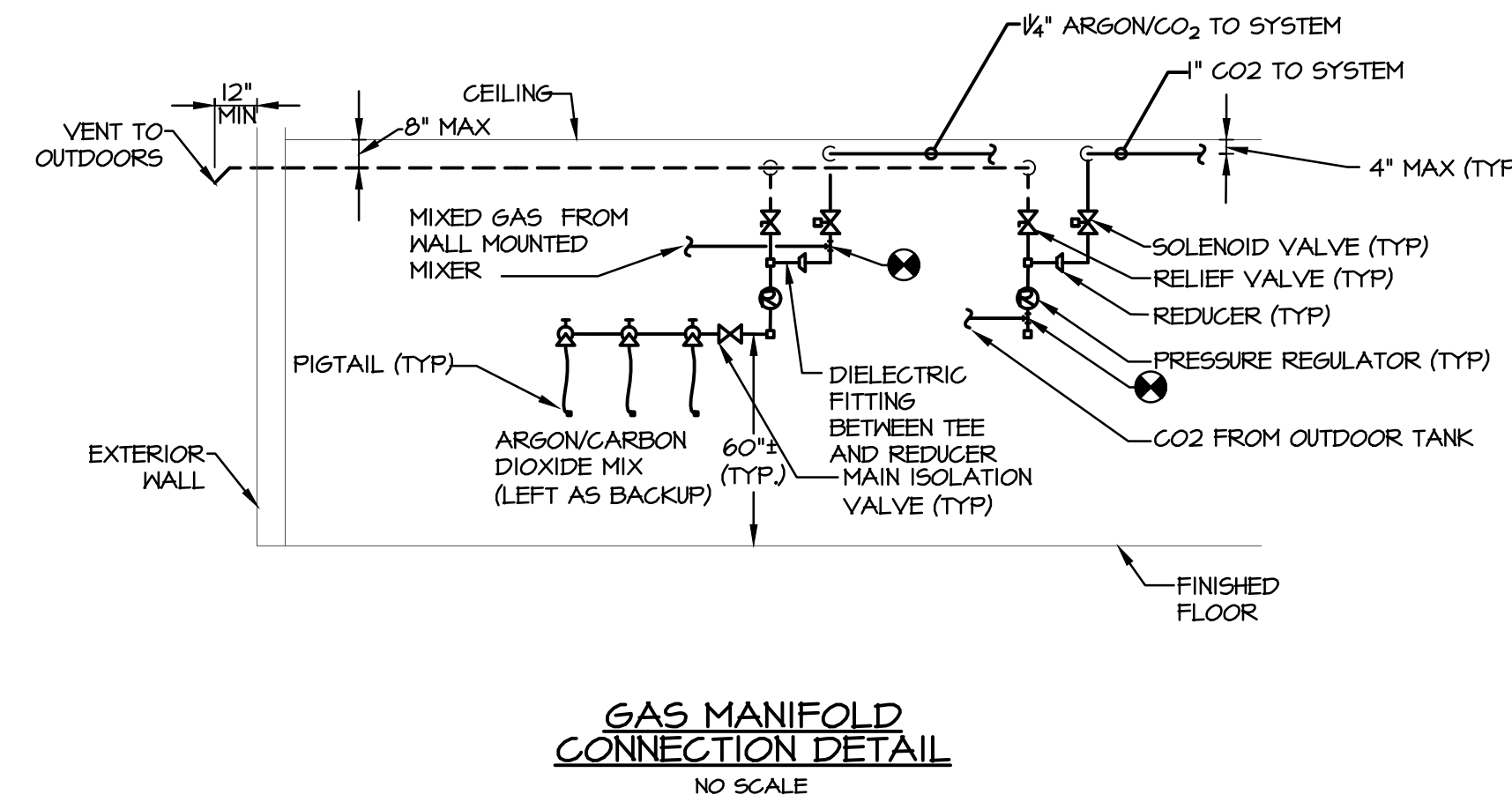
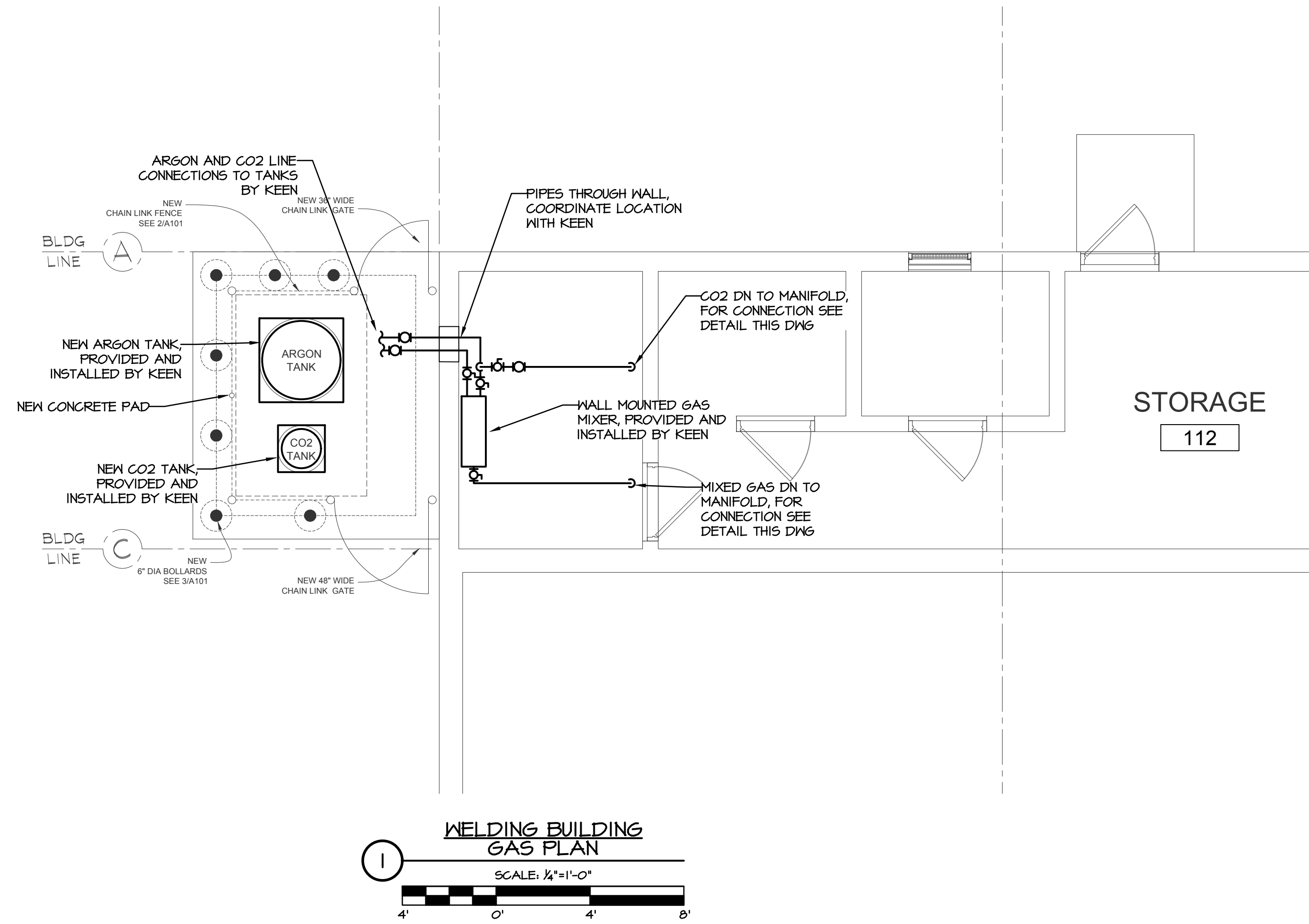
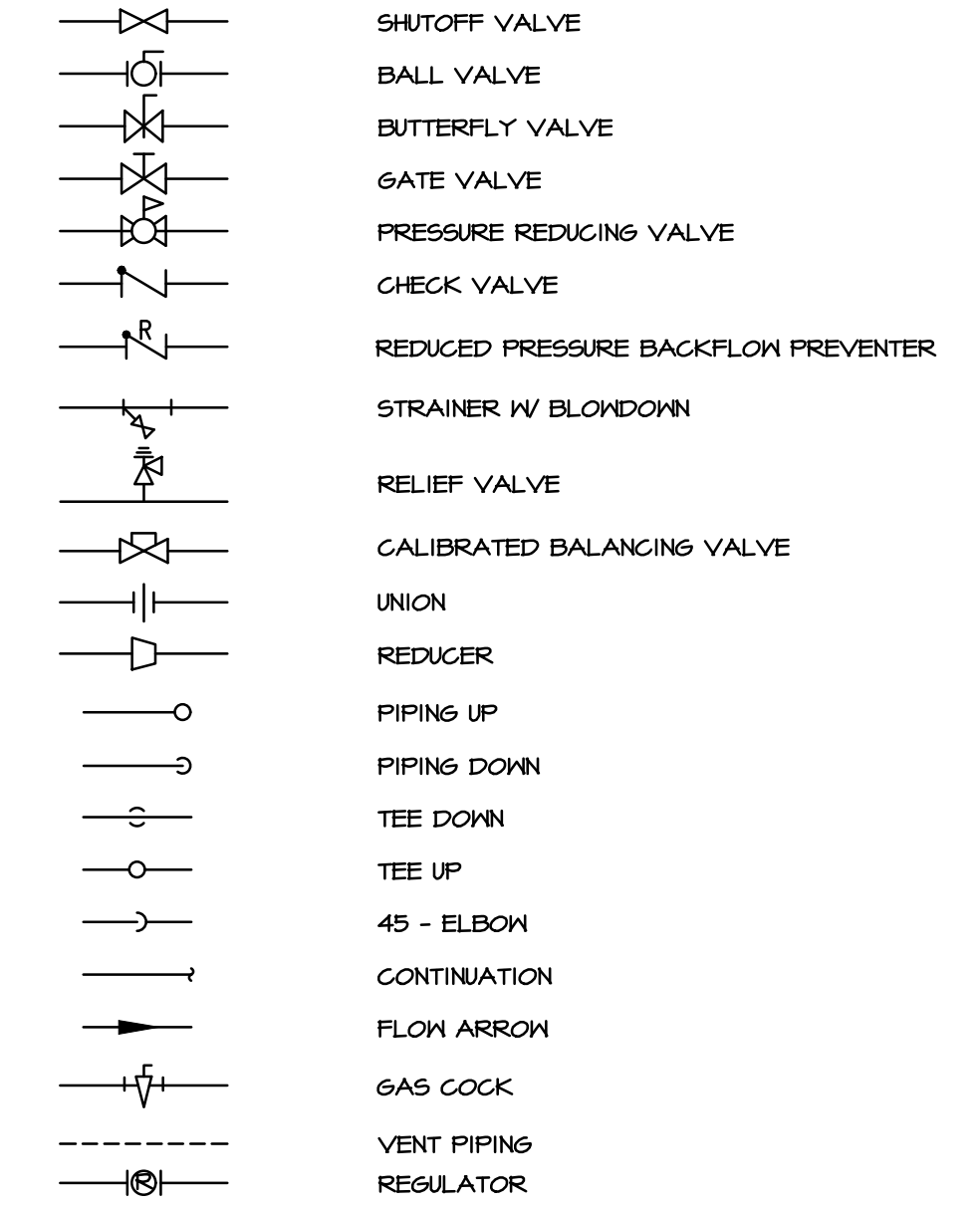
**GENERAL PLUMBING NOTES**

- GENERAL PLUMBING NOTES:
- CONTRACTOR TO PROVIDE ALL LABOR AND MATERIALS NEEDED FOR A COMPLETE AND PROPERLY OPERATING PLUMBING SYSTEM.
  - THE DRAININGS ARE GENERALLY DIAGRAMMATIC AND INDICATIVE OF WORK TO BE PERFORMED. THE DRAININGS ARE NOT INTENDED TO SHOW EXACT LOCATIONS OR TO SHOW EVERY PIPE, FITTING, VALVE, OR APPURTENANCE REQUIRED FOR A COMPLETE INSTALLATION. DO NOT SCALE LOCATION DIMENSIONS FROM THESE DRAININGS.
  - THE CONTRACTOR IS RESPONSIBLE FOR CHECKING AND VERIFYING ALL EXISTING CONDITIONS AND DIMENSIONS, AND FOR COORDINATION OF HIS WORK WITH THAT OF OTHER TRADES. PERFORM WORK IN AN ORDERLY MANNER AND WITH THE LEAST POSSIBLE INTERFERENCE.
  - WORK SHALL CONFORM TO OR MEET THE REQUIREMENTS OF THE MOST CURRENT ADOPTED EDITION OF:
    - INTERNATIONAL BUILDING CODE
    - INTERNATIONAL PLUMBING CODE
    - NEC (NFPA 70)
    - ALL FEDERAL, STATE, AND LOCAL CODES AND ORDINANCES.
  - ALL MATERIALS, EQUIPMENT, AND DEVICES SHALL, AS A MINIMUM, MEET THE REQUIREMENTS OF UL WHERE UL REQUIREMENTS ARE ESTABLISHED FOR THOSE ITEMS. ALL ITEMS SHALL BE CLASSIFIED BY UL AS SUITABLE FOR THE PURPOSE USED.
  - WHERE PIPES OR CONDUIT PENETRATE FIRE RATED OR SMOKE RATED BARRIERS (WALLS, FLOORS, AND CEILING), SEAL PENETRATIONS IN ACCORDANCE WITH NFPA 90A WITH UL LISTED FIRE STOPPING SYSTEM.
  - ALL EQUIPMENT AND MATERIALS INCORPORATED IN THIS WORK SHALL BE NEW UNLESS NOTED OTHERWISE AND SHALL BE CURRENT PRODUCTS BY MANUFACTURERS REGULARLY ENGAGED IN THE PRODUCTION OF SUCH PRODUCTS.
    - ALL FACTORY APPLIED COATINGS AND FINISHES SHALL BE PROVIDED WITHOUT RUST, SCRATCHES, OR DENTS.
  - PROVIDE OWNER WITH CERTIFICATES OF FINAL INSPECTIONS AND ACCEPTANCE FROM THE AUTHORITY HAVING JURISDICTION.

- COORDINATION REQUIREMENTS:
- COORDINATE LOCATION AND INSTALLATION OF PLUMBING WORK WITH OTHER TRADES TO AVOID CONFLICTS AND INTERFERENCES. MODIFICATIONS DUE TO FIELD CONDITIONS SHALL BE COMPLETELY RESOLVED BY CONTRACTOR IN ACCORDANCE WITH RECOMMENDATIONS OF THE CONSTRUCTION MANAGER/OWNER.
  - PROVIDE TO THE CONSTRUCTION MANAGER DIMENSIONED LOCATIONS AND SIZES OF ALL REQUIRED FLOOR, WALL, AND ROOF OPENINGS. PROVIDE FOR INSTALLATION OF SLEEVES AND FRAMING AS REQUIRED.

- PLUMBING INSTALLATION REQUIREMENTS:
- INSTALL ALL EQUIPMENT AND MATERIAL IN ACCORDANCE WITH MANUFACTURER'S PRINTED INSTALLATION INSTRUCTIONS AND RECOMMENDATIONS. MAINTAIN CLEARANCES FOR CLEARANCE ACCESS TO MAINTAIN AND SERVICE EQUIPMENT, VALVES, AND CONTROLS.
  - ALL INSTALLATION AND WORK SHALL BE PERFORMED IN A NEAT, WORKMANLIKE MANNER SO AS NOT TO DAMAGE ANY SURFACES, EQUIPMENT, OR MATERIALS.
  - PIPE SIZES ARE IN INCHES UNLESS NOTED OTHERWISE.
  - RUNOUTS TO EQUIPMENT SHALL BE SIZED AS INDICATED AND INCREASED OR REDUCED AT POINT OF FINAL CONNECTION TO EQUIPMENT.
  - ALL SYSTEMS SHALL BE TESTED FOR PROPER OPERATION IN ACCORDANCE WITH APPLICABLE CODE OR REGULATION.
  - SEAL ALL PIPE PENETRATIONS THROUGH WALLS, FLOORS, AND ROOFS TO BE WATERTIGHT.

**PLUMBING LEGEND**



**GENERAL SHEET NOTES**

- CONTRACTOR SHALL INSTALL ALL PIPING INSIDE OF BUILDING AS 3/8" OD TYPE-K COPPER CLEANED PIPING.
- ALL PIPING SHALL BE SUPPORTED FROM CEILING BEAMS WITH BEAM CLAMPS, ALL THREAD, AND PIPE HANGERS.
- ALL MIXED GAS ENTERING THE SYSTEM WILL BE REGULATED AT THE MIXER.

NO.	DATE	REVISION	BY

PETER M. MEDICA RA016195 MEMBER OF THE AMERICAN INSTITUTE OF ARCHITECTS  <b>BONNETT MEDICA ASSOCIATES INCORPORATED</b> ARCHITECTS • PLANNERS ENGINEERS • PROJECT MANAGERS 1242 WEST CHESTER PIKE • SUITE 11 WEST CHESTER, PA 19382 TELEPHONE 610 • 368 • 6678	 <b>SYSTEMS DESIGN ENGINEERING, INC</b> 1032 JAMES DR. LEESPORT, PA 19533 PHONE: 610.916.8500 FAX: 610.916.8501 BOYERTOWN, PA 610.349.1319 SCHUYLKILL HAVEN, PA 570.385.5549	
	<b>WELDING GAS NEW WORK</b> LOCKER ROOM ALTERNATIONS - WEST CAMPUS WELDING SHOP BERKS CAREER & TECHNOLOGY CENTER 1057 COUNTY WELFARE ROAD LEESPORT, PA 19533 SITUATE IN BERKS COUNTY, PA	
DRAWN BY: LS CHECKED: SG DATE: 03/27/2026	APPROVED: SG SCALE: AS NOTED	CAD FILE NAME: P-101.dwg DRAWING NUMBER: D-25-0485-0040-P101

© Copyright 2024, Systems Design Engineering, Inc. - G:\Projects\Medica\General Technology\Comm\25-0485-0040-Welding Bldg-Changing Area-01 - Design\Peter Medica\Drawings\Plumbing\101.dwg - March 27, 2024, 3:33 pm by bouret

# ABBREVIATIONS

AF	AMPERE FRAME
AFF	ABOVE FINISHED FLOOR
AFB	ABOVE BASED FLOOR
AG	AMPS INTERRUPTING CURRENT
AL	ALUMINUM
AS	AMP SENSITIVE
AT	AMPERE TRIP
ATS	AUTOMATIC TRANSFER SWITCH
AV	AIR CONDITIONING
AFG	ABOVE FINISHED GRADE
CB	CIRCUIT BREAKER
CL	CIRCUIT
CL	CURRENT LIMITING
CLF	CURRENT LIMITING FUSE
CE	CEILING
CONTR	CONTRACTOR
CONTR	CURRENT TRANSFORMER
CONTR	CONDUIT
CONTR	COPPER
CONTR	CORNER
CONTR	CONDENSING UNIT BY OTHERS
DISC	DISCONNECT
DISC	DISTRIBUTION
DIST	DISTRIBUTION
D.O.	DRAIN OUT
D.O.	DRAIN DRAWING
DMS	ELECTRIC BASEBOARD HEAT
ENH	ELECTRICAL CONTRACTOR
EF	EXHAUST FAN
ELC	ELECTRICAL
EM	ENERGY
EMT	ELECTRICAL METALLIC TUBING
EMT	EXISTING TO BE DEMOLISHED
E	EXISTING TO REMAIN
ER	EXISTING TO BE RELOCATED
ER	ELECTRIC WATER COOLER
DH	ELECTRIC WATER HEATER
FA	FIRE ALARM
FA	FEEDER
FX	FIXTURE
F	FUSE
GF	GROUND FAULT INTERRUPTER
HOA	HAND-OFF - AUTOMATIC SWITCH
HP	HORSEPOWER
HZ	HERTZ
IDF	INTERMEDIATE DISTRIBUTION FRAME
IS	ISOLATED GROUND
JB	JUNCTION BOX
KV	KILOVOLT
KVA	KILOVOLT-AMPERES
KM	KILOWATT
LED	LIGHT EMITTING DIODE
LSC	LONG-SHORT INSTANTANEOUS AND GROUND FAULT TRIP FUNCTIONS
LTS	LIGHTING
MAX	MAXIMUM
MCB	MAIN CIRCUIT BREAKER
MDF	MAIN DISTRIBUTION FRAME
MCC	MOTOR CONTROL CENTER
MFR	MANUFACTURER
MH	MOUNTING HEIGHT
MLO	MAIN LUGS ONLY
MT	MOUNT
N	NEUTRAL
NC	NORMALLY CLOSED
NG	NOT IN CONTRACT
NL	NEAR LIGHT
N	NUMBER
NIS	NOT TO SCALE
OPE	OWNER FURNISHED EQUIPMENT
PH	PHONE
PH	PANEL
PH	POTENTIAL TRANSFORMER
PV	POLYVINYL CHLORIDE
PHR	POWER RECEPTACLE
REG	RECESSED
RF	RETURN FAN
RL	EXISTING SHOWN RELOCATED
RM	ROOM
SCH	SCHEDULE
SEC	SECONDARY
SF	SUPPLY FAN
SER	SOLID STATE RELEASE UNIT
SN	SOLID NEUTRAL
SN	SWITCH
SH	SHIELD
SHR	SHOCKRESISTANT
TDR	TIME DELAY RELAY
TEL	TELEPHONE
TF	TRANSFER FAN
TP	TINNED PAIR
TP	TYPICAL
UH	UNIT HEATER
UN	UNLESS OTHERWISE NOTED
V	VOLT
M	WATT
MP	WEATHERPROOF
MPR	TRANSFORMER

# ELECTRICAL LEGEND

NOTE: THIS LEGEND IS A STANDARD AND SOME ITEMS MAY NOT APPLY.

	NEW LIGHTING AND APPLIANCE BRANCH CIRCUIT PANELBOARD
	EXISTING LIGHTING AND APPLIANCE BRANCH CIRCUIT PANELBOARD
	DISTRIBUTION PANEL
	DISCONNECT SWITCH, 600V, HEAVY DUTY, QUICK MAKE, QUICK BREAK, SIZE AND NUMBER OF POLES AS INDICATED ON PLANS, FUSIBLE OR NON-FUSIBLE AS INDICATED ON PLANS.
	ENCLOSED CIRCUIT BREAKER, SIZE AND NUMBER OF POLES AS INDICATED ON PLANS.
	MAGNETIC MOTOR STARTER
	COMBINATION MAGNETIC MOTOR STARTER AND DISCONNECT SWITCH, NEMA SIZE AS INDICATED ON PLANS
	VARIABLE FREQUENCY DRIVE
	MOTOR - HORSEPOWER AS INDICATED OR "F" FOR FRACTIONAL
	FIRE ALARM VISUAL APPLIANCE, MALL MOUNTED, 'V' INDICATES CANDELA RATING
	FIRE ALARM VISUAL APPLIANCE, CEILING MOUNTED, 'C' INDICATES CANDELA RATING
	FIRE ALARM COMBINATION HORN / VISIBLE NOTIFICATION APPLIANCE, 'C' INDICATES CANDELA RATING
	FIRE ALARM COMBINATION SPEAKER / VISIBLE NOTIFICATION APPLIANCE, 'C' INDICATES CANDELA RATING, 'V' INDICATES MATTAGE, FINAL MATTAGE TAP TO BE DETERMINED DURING AIDABLE FIELD TEST.
	FIRE ALARM MANUAL PULL STATION
	FIRE ALARM AUDIBLE APPLIANCE - HORN
	FIRE ALARM AUDIBLE APPLIANCE-SPEAKER ONLY, WALL MOUNTED, 'V' INDICATES MATTAGE, FINAL MATTAGE TAP TO BE DETERMINED DURING AIDABLE FIELD TEST.
	FIRE ALARM AUDIBLE APPLIANCE-SPEAKER ONLY, CEILING MOUNTED, 'V' INDICATES MATTAGE, FINAL MATTAGE TAP TO BE DETERMINED DURING AIDABLE FIELD TEST.
	FIRE ALARM VISUAL APPLIANCE, WALL MOUNTED, 'V' INDICATES CANDELA RATING
	FIRE ALARM VISUAL APPLIANCE, CEILING MOUNTED, 'C' INDICATES CANDELA RATING
	FIRE ALARM COMBINATION HORN / VISIBLE NOTIFICATION APPLIANCE, 'C' INDICATES CANDELA RATING
	FIRE ALARM COMBINATION SPEAKER / VISIBLE NOTIFICATION APPLIANCE, 'C' INDICATES CANDELA RATING, 'V' INDICATES MATTAGE, FINAL MATTAGE TAP TO BE DETERMINED DURING AIDABLE FIELD TEST.
	FLOOD SWITCH
	VALVE SUPERVISORY SWITCH
	PRESSURE SWITCH
	ADDRESSABLE INPUT MONITOR MODULE
	ADDRESSABLE OUTPUT MONITOR MODULE
	DUCT SMOKE DETECTOR REMOTE ALARM / TEST / RESET STATION
	FIRE ALARM CONTROL PANEL
	FIRE ALARM ANNUNCIATOR
	FIRE ALARM NOTIFICATION APPLIANCE PANEL
	CARD READER (FAIL OPEN IN EMERGENCY)
	DURESIS BUTTON
	DOOR CONTACT - ROUGH IN 3/4" COORDINATE AND PULL STRING FROM DOOR FRAME TO ACCESSIBLE CEILING SPACE - COORDINATE FINAL ROUGH-IN LOCATION WITH G.G.
	DOOR MAGNETIC LOCK
	DOOR RELEASE BUTTON
	EXIT BUTTON
	ELECTRIC LOCK SET
	OVERHEAD DOOR CONTACT
	SECURITY SYSTEM MOTION DETECTOR
	KEY PAD
	REQUEST TO EXIT
	SOUNDER (DOOR ALARM)
	SINGLE MAGNETIC LOCK
	SECURITY CAMERA
	SECURITY CAMERA - PAN-TILT-ZOOM
	SPEAKER, CEILING MOUNTED
	SPEAKER, WALL MOUNTED
	SPEAKER VOLUME CONTROL, WALL MOUNTED
	CLOCK, WALL MOUNTED
	MICROPHONE OUTLET, WALL MOUNTED, NUMBER INDICATES QUANTITY OF OUTLETS UNDER PLATE
	CIRCUIT BREAKER - AMPERAGE FRAME, AMPERAGE TRIP, SINGLE POLE, 2P, 3P, 4P, 3P, 3P POLE
	CIRCUIT BREAKER WITH SHUNT-TRIP
	GENERATOR
	TRANSFORMER
	NON-FUSED DISCONNECT SWITCH
	FUSED DISCONNECT SWITCH
	CURRENT TRANSFORMER
	POTENTIAL TRANSFORMER
	OVERLOAD RELAY
	NORMALLY OPEN CONTACTS
	NORMALLY CLOSED CONTACTS
	START PUSH BUTTON
	STOP PUSH BUTTON
	HAND-OFF - AUTO SELECTOR SWITCH
	RELAY
	PILOT LIGHT - "R" FOR RED, "G" FOR GREEN, "W" FOR AMBER
	AUTOMATIC TRANSFER SWITCH
	GROUND

# ELECTRICAL SPECIFICATIONS

- IT IS THE INTENT OF THESE SPECIFICATIONS AND ACCOMPANYING DRAWINGS THAT THE CONTRACTOR SHALL, UNLESS OTHERWISE SPECIFIED HEREIN, FURNISH ALL LABOR, MATERIALS, TOOLS AND EQUIPMENT INCLUDING SCAFFOLDING TO COMPLETE THE INSTALLATION OF THE ENTIRE ELECTRICAL SYSTEM AS SPECIFIED HEREIN. CONTRACTOR SHALL PROPERLY INSTALL, EQUIP, ADJUST, AND PUT INTO PERFECT OPERATION, THE RESPECTIVE PORTIONS OF THE INSTALLATION SPECIFIED, AND SO INTERCONNECT THE VARIOUS ITEMS OR SECTIONS OF THE WORK IN ORDER TO FORM A COMPLETE AND PROPERLY OPERATING WHOLE.
- THE WORK SHALL INCLUDE ALL MATERIAL AND LABOR REQUIRED TO PROVIDE THE ELECTRICAL WORK SPECIFIED AND SHOWN ON DRAWINGS. THE CONTRACTOR SHALL PROVIDE ALL NECESSARY ACCESSORIES, PARTS, ETC. FOR A COMPLETE AND OPERATIONAL SYSTEM.
- THE WORK SHALL INCLUDE, BUT NOT BE LIMITED TO, THE FOLLOWING:
  - INTERIOR LIGHTING SYSTEM
  - BRANCH CIRCUITS
  - CONNECTIONS TO EQUIPMENT PROVIDED BY OTHERS
  - GROUNDING
  - BOXES
  - CUTTINGS AND PATCHING
  - ISOLATION
  - TESTING
- THE WORK SHALL INCLUDE OBTAINING ALL PERMITS, PAYING ALL PERMIT FEES, SCHEDULING ALL REQUIRED INSPECTIONS AND PAYING ALL UTILITY AND INSPECTION FEES.
- ALL WORK SHALL BE IN ACCORDANCE WITH ALL APPLICABLE LAWS, CODES, AND REGULATIONS ADOPTED BY MUNICIPAL, COUNTY, STATE, AND FEDERAL AUTHORITIES, INCLUDING THE LATEST EDITION OF THE NATIONAL ELECTRICAL CODE (NEC) AND WITH THE REQUIREMENTS/AMENDMENTS OF THE LOCAL AUTHORITY HAVING JURISDICTION (A.H.J.).
- CONTRACT DRAWINGS ARE DIAGRAMMATIC IN NATURE AND ARE INTENDED TO CONVEY SCOPE, DESIGN INTENT, AND GENERAL ARRANGEMENT ONLY. CONTRACTOR IS RESPONSIBLE FOR COORDINATING THE WORK OF ALL TRADES INCLUDING RESOLUTION OF FIELD CONFLICTS THAT MAY ARISE.
- ALL OF THE ELECTRICAL INSTALLATIONS SHALL BE PERFORMED IN A NEAT, WORKMANLIKE MANNER AND IN ACCORDANCE WITH INDUSTRY STANDARDS.
- EACH FEEDER AND BRANCH CIRCUIT SHALL INCLUDE AN ISOLATED EQUIPMENT GROUND CONDUCTOR PER N.E.C. ARTICLE 250. BOND ALL ELECTRICAL EQUIPMENT, OUTLET BOXES, GROUNDING TYPE RECEPTACLES, ETC. IN ACCORDANCE WITH N.E.C. ARTICLE 250.
- MULTI-WIRE BRANCH CIRCUITS ARE NOT PERMITTED. EACH (20V) BRANCH CIRCUIT SHALL INCLUDE DEDICATED NEUTRAL AND ISOLATED GROUND CONDUCTORS.
- GROUPING OF BRANCH CIRCUITS AND FEEDERS SHALL BE PERMITTED, PROVIDED THAT THE N.E.C. RULES PERTAINING TO MAXIMUM ALLOWABLE PERCENT FILL OF RACEWAYS, AND AMPACITY ADJUSTMENT FACTORS FOR MORE THAN THREE (3) CURRENT CARRYING CONDUCTORS IN A RACEWAY ARE STRICTLY ADHERED TO. THE CONTRACTOR SHALL EXERCISE CAUTION IN PROVIDING AN EQUAL NUMBER OF A, B, AND C PHASE CONDUCTORS IN RACEWAYS WHEN GROUPING CIRCUITS.
- TROUGH, JUNCTION BOXES, AND PULL BOXES ARE NOT NECESSARILY INDICATED, BUT SHALL BE PROVIDED WHERE REQUIRED BY THE N.E.C. AND AS REQUIRED FOR EASE OF INSTALLATION. BOXES SHALL BE SIZED, AT A MINIMUM, IN ACCORDANCE WITH N.E.C. ARTICLE 314. TROUGHS SHALL BE SIZED PER N.E.C. ARTICLE 306.
- ALL BRANCH CIRCUITS AND FEEDERS PROVIDED UNDER THIS CONTRACT ARE TO BE NEW UNLESS OTHERWISE NOTED.
  - EXPOSED INTERIOR WIRING IN DRY LOCATIONS SHALL BE INSTALLED IN ELECTRICAL METALLIC TUBING (EMT) OR RIGID GALVANIZED STEEL CONDUIT, 3/4" MINIMUM SIZE. FLEXIBLE METAL CONDUIT, OR LIQUID-TIGHT FLEXIBLE METAL CONDUIT, SHALL BE USED FOR CONNECTIONS TO VIBRATION PRODUCING EQUIPMENT, IN LENGTHS NOT EXCEEDING 6'.
    - WIRING IN INTERIOR, DRY SPACES, CONCEALED IN STRUCTURE, OR ABOVE ACCESSIBLE CEILING MAY BE INSTALLED IN EMT, OR METAL GLAD (TYPE AC) CABLE AS ALLOWED BY CODE AND SPECIFICATIONS.
    - FOR EXPOSED DAMP OR WET LOCATIONS WHERE WIRING IS SUBJECT TO DAMAGE, GALVANIZED RIGID STEEL CONDUIT SHALL BE USED.
    - FOR UNDERGROUND CIRCUITS AND FEEDERS, UTILIZE SCHEDULE 40 PVC CONDUIT, EXCEPT THAT IN AREAS SUBJECT TO VEHICULAR TRAFFIC TRAFFIC SCHEDULE 80 PVC CONDUIT SHALL BE USED.
  - ALL 600 VOLT OVER-CURRENT PROTECTIVE DEVICES SHALL HAVE INTERRUPTING RATINGS (AIC OR ARI) IN RMS AMPERES SYMMETRICAL. ALL DEVICES SHALL BE FULLY RATED FOR AVAILABLE FAULT CURRENT. ALL PANELBOARDS, SWITCHBOARDS, DISTRIBUTION BOARDS, DEVICES ETC. SHALL BE FULLY RATED. SERIES RATED EQUIPMENT IS NOT ALLOWED.
- ALL BUILDING WIRE SHALL BE TYPE THHN/THM (XAL LISTED) COPPER CONDUCTORS, WITH 90° CELSIUS RATED INSULATION, #2 MINIMUM SIZE. UTILIZE 1/2" DIA. RIGID FOR ANY 120V, 15 OR 20A CIRCUIT THAT EXCEEDS 100 FEET TO LAST DEVICE OR OUTLET.
- DO NOT UTILIZE FEED-THROUGH (FTG) RECEPTACLES FOR DOWNSTREAM DEVICE PROTECTION. ALL DEVICES LISTED AS FTG SHALL BE STAY ALONE.
- CONTRACTOR SHALL PROVIDE AND INSTALL AN APPROVED, LISTED, FIRE STOP SEALANT TOTALLY ENCLOSED ALL PENETRATIONS THROUGH RATED WALLS, CEILING, FLOORS, ROOFS, ETC. ALL FLOOR PENETRATIONS SHALL BE CORE DRILLED, SLEEVED, AND SEALED WITH AN APPROVED, FIRE RATED SEALANT. ALL EXISTING PENETRATIONS IN WALLS AND FLOORS MUST BE SEALED TO MAINTAIN FIRE RATING.
- BRANCH CIRCUIT FOR FACT SHALL MEET THE REQUIREMENT OF SECTION 4.4J OF NFPA 72. CONTRACTOR INSTALLING FIRE ALARM SYSTEM SHALL BE NICET 1 CERTIFIED.
- EMERGENCY AND INTERMEDIATE LIGHTING SHALL BE CONNECTED AND INSTALLED TO MEET THE REQUIREMENTS OF N.E.C. 700.2(B) AND 700.3(B). CONSULT THE ARCHITECT, BUILDING INSPECTOR, OR THE LATEST ADOPTED EDITION OF THE INTERNATIONAL BUILDING CODE FOR EXACT LOCATIONS. THE DESIGNER DOES NOT TAKE RESPONSIBILITY FOR LOCATIONS. FINAL LOCATIONS SHALL BE APPROVED BY THE LOCAL A.H.J.
- CONTRACTOR SHALL PERFORM THE WORK AS INDICATED ON THE DRAWINGS, ANY DEVIATION FROM THE DRAWINGS SHALL BE SUBMITTED TO THE ENGINEER OR ARCHITECT FOR REVIEW AND APPROVAL. IN WRITING, IF CHANGES ARE MADE WITHOUT WRITTEN CONSENT, THE CONTRACTOR SHALL BE LIABLE FOR ANY ISSUES THAT ARISE DUE TO THE CHANGES.
- UNLESS NOTED OTHERWISE, ALL WIRE SIZES SHALL BE BASED ON THE FOLLOWING: TABLE 310.15, 60° C/COLUMN FOR #4 THROUGH #1; TABLE 310.15, 75° C/COLUMN FOR #10 AND GREATER, AND OTHER ALLOWANCES OF 100%.
- UNLESS OTHERWISE NOTED, FEEDER TAPS AND TRANSFORMER SECONDARY CONDUCTOR TAPS ARE DESIGNED BASED ON THE 1/3 RULE OF 240.2(C)(2).
- UNLESS OTHERWISE NOTED, ALL CONDUIT SIZES ARE BASED ON EMT, RVC, OR RVC (ING. SPEC. SCHEDULE 40).
- ALL ELECTRICAL MATERIALS, DEVICES, APPLIANCES, AND EQUIPMENT SHALL BE NEW, LABELED AND LISTED BY A NATIONALLY RECOGNIZED TESTING LABORATORY OR AGENCY (E.G. UL), UNLESS OTHERWISE NOTED.
- ELECTRICAL CONTRACTOR SHALL FOLLOW MANUFACTURERS INSTALLATION INSTRUCTIONS FOR ALL EQUIPMENT IF NOT INDICATED ON DRAWINGS. IF THERE IS A DISCREPANCY, MANUFACTURERS INSTRUCTIONS TAKE PRECEDENCE.
- THE E.C. SHALL FURNISH ALL EQUIPMENT, LABOR, SERVICES, AND MATERIALS REQUIRED FOR COMPLETE AND FUNCTIONAL INSTALLATION OF THE WORK INDICATED. UNLESS OTHERWISE NOTED, ALL MATERIALS SHALL BE NEW.
- PROVIDED ACCESS PANELS AS REQUIRED FOR ACCESS TO EQUIPMENT.
- ALL WIRING, EQUIPMENT, STARTERS, AND CONTROLS SHALL CONFORM TO THE NATIONAL ELECTRICAL CODE AND TO THE REQUIREMENTS OF THE LOCAL UTILITY COMPANY.
- NEW LIGHTING CONTROLS SHALL COMPLY WITH THE APPLICABLE EDITION OF THE INTERNATIONAL ENERGY CONSERVATION CODE (IECC) OR ASHRAE 90.1
- ALL WIRING METHODS SHALL BE N.E.C. COMPLIANT AND MEET THE REQUIREMENTS OF THE SPACE, OCCUPANCY, AND CONDITION OF USE.
- THESE PLANS HAVE BEEN DRAWN AND CALCULATIONS MADE BASED ON THE EXISTING DOCUMENTS AND/OR INFORMATION FURNISHED BY THE CLIENT AND/OR OTHERS. THE ENGINEER DOES NOT GUARANTEE THE ACCURACY OF THESE DRAWINGS. THE CONTRACTOR IS RESPONSIBLE FOR THE INSTALLATION OF THE ITEMS SHOWN ON THESE DRAWINGS AND/OR OTHERS OF THE FACILITY SHALL VERIFY EXISTING CONDITIONS AND REPORT ANY DISCREPANCIES TO THE ENGINEER FOR CORRECTION, EDITING, RE-CALCULATION, ETC. AS REQUIRED.
- DO NOT SCALE DRAWINGS. CONTRACTOR SHALL VERIFY AND CONFIRM ALL DIMENSIONS IN THE FIELD AND NOTIFY THE ENGINEER OF ANY AND ALL DISCREPANCIES ON THE DRAWINGS. COPIES OF THESE DRAWINGS WITHOUT A PROFESSIONAL ENGINEERS SEAL AND ORIGINAL SIGNATURE SHALL NOT BE CONSIDERED VALID, AND ARE FOR THE CONVENIENCE OF THE USER AT THEIR OWN RISK.

# ELECTRICAL EQUIPMENT MOUNTING HEIGHTS

MALL MOUNTED FIRE ALARM AUDIBLE NOTIFICATION APPLIANCE (OR AS SHOWN ON ARCHITECTURAL DETAILS)	4' BELOW FINISHED CEILING
TV MONITOR OUTLETS AND SERVICE RECEPTACLES FOR SHELF MOUNTED TV	8'-0" ABOVE FINISHED FLOOR
WARNING AND SIGNALING LUMINAIRES / SIGNS	CENTERED ABOVE DOOR OR WINDOW OPENING
FIRE ALARM VISUAL NOTIFICATION APPLIANCE MOUNTED AT 6'-6" MEASURED FROM THE FINISHED FLOOR TO THE CENTER OF THE DEVICE OR 6' BELOW FINISHED CEILING MEASURED FROM THE FINISHED CEILING TO THE TOP OF THE DEVICE, WHICHEVER IS LOWER	6'-6" ABOVE FINISHED FLOOR
TOP OF FLUSH AND SURFACE MOUNTED LIGHTING CONTROL PANELS OR POWER PANELBOARDS AND TELEPHONE CABINETS.	6'-6" ABOVE FINISHED FLOOR
TOP OF HIGHEST ELECTRICAL SAFETY SWITCHES	4'-0" ABOVE FINISHED FLOOR
MALL MOUNTED TELEPHONE AND MALL MOUNTED INTERCOMS	4'-0" ABOVE FINISHED FLOOR
MALL MOUNTED ELECTRICAL DEVICES, SUCH AS LIGHTING SWITCHES, MANUAL MOTOR STARTERS, THERMOSTATS, AND FIRE ALARM PULL STATIONS, OF OUTLETS IN TOILET ROOMS ALL FLOOR EQUIPMENT IN LABS AND EQUIPMENT ROOMS	3'-6" ABOVE FINISHED FLOOR
ELECTRICAL RECEPTACLES INCLUDING THOSE USED WITH MECHANICAL SPACES AND ELEVATOR ROOMS, TELEPHONE, DATA, AND COMMUNICATION OUTLETS CATV AND ANY JUNCTION BOXES	1'-6" ABOVE FINISHED FLOOR
MALL CLOCK AT 8'-0" OR CENTER BETWEEN DOOR FRAME AND CEILING	8'-0" ABOVE FINISHED FLOOR

MOUNTING HEIGHTS ARE TO CENTER OF OUTLETS UNLESS SPECIFICALLY NOTED OTHERWISE. IN MASONRY CONSTRUCTION, THE ABOVE HEIGHTS SHALL BE USED FOR REFERENCE TO NEAREST BLOCK OR BRICK COURSE. THE ABOVE MOUNTING HEIGHTS SHALL BE ADHERED TO UNLESS SPECIFICALLY NOTED OR DETAILED OTHERWISE ON THE ARCHITECTURAL DRAWINGS OR SPECIFICATIONS.

- WITH RESPECT TO THE CONSTRUCTION BASED ON THESE DRAWINGS, THE E.C. IS ULTIMATELY RESPONSIBLE FOR ALL INSTALLED HEAVY AND MEDIUM HEAVY ALL APPLICABLE CODES AND STANDARDS.
- EACH CONTRACTOR SHALL REVIEW ALL PROJECT DOCUMENTS OF ALL TRADES AND REVIEW THEM PROJECT FOR CONFLICTS. ANY DISCREPANCIES IN WORKSHOWN MATERIALS, MATERIALS OR EQUIPMENT, OR UNSATISFACTORY PERFORMANCE AND ALL OTHER PARTS OF THE BUILDING DAMAGED THEREBY, SHALL BE REPAIRED, REPLACED, OR OTHERWISE REMEDIATED WITHOUT EXPENSE TO THE OWNER. SUCH REPAIRS OR REPLACEMENTS SHALL BE MADE IN A TIMELY MANNER AND AT THE CONVENIENCE OF THE OWNER.
- HIRING DEVICES AND OUTLET BOXES SHALL BE RECESSED IN NEW CONSTRUCTION WITH CONCEALED CONDUIT/WIRING.
- CONTRACTOR SHALL UPON COMPLETION OF THE WORK SUBMIT A SET OF RECORD DRAWINGS SHOWING ALL BURIED OR CONCEALED EQUIPMENT OF PARTS OF THE WORK.
- EACH TRADE CONTRACTOR SHALL COORDINATE THE ELECTRICAL REQUIREMENTS OF HISHER WORK WITH THE PROJECT ELECTRICAL CONTRACTOR PRIOR TO SHOP DRAWING SUBMISSION.
- COORDINATE INSTALLATION OF PIPING, DUCTWORK, EQUIPMENT, ETC. TO AVOID PASSING OVER ELECTRICAL PANELS THROUGH ELECTRICAL CLOSETS, ETC. IN CONFORMANCE WITH CODE.
- ALL COMMUNICATIONS WORK SHALL MEET THE REQUIREMENTS OF CHAPTER 8 OF THE N.E.C. AND ALL INDUSTRY STANDARDS (BICSI, EIA/TIA, ETC).
- THE EXACT LOCATIONS OF DEDICATED OUTLETS FOR COFFER PHONE AND COMPUTER ARE TO BE COORDINATED WITH THE OWNER PRIOR TO INSTALLATION.
- COORDINATE/SEPARATE ELECTRICAL REQUIREMENTS FOR REMODIFIED MECHANICAL SYSTEMS.
- UPON COMPLETION OF WORK, THOROUGHLY CLEAN ALL SYSTEMS OF OBSTRUCTIONS, DEBRIS, SCALE, DUST, DIRT, ETC. AND PLACE SYSTEMS IN OPERATION.
- UNLESS OTHERWISE NOTED, ALL ELECTRICALLY DRIVEN EQUIPMENT PROVIDED OR FURNISHED BY THE MECHANICAL CONTRACTOR SHALL INCLUDE MOTORS, FREEDRIVES, RELAYS, CONTACTORS, DISCONNECTS AND ALL OTHER CONTROLLING DEVICES REQUIRED FOR PROPER AND SATISFACTORY OPERATION OF THE EQUIPMENT. E.G. SHALL INSTALL EQUIPMENT AS REQUIRED FROM THE LINE SIDE OF THE LAST DISCONNECTING MEANS (INCLUDING SUPPLIED DISCONNECT) BACK TO POWER SOURCE. ALL DDC AND OTHER CONTROL WIRING (INCLUDING VFD'S) SHALL BE SUPPLIED AND INSTALLED BY THE E.C.
- THE CONTRACTOR SHALL APPLY FOR AND PAY FOR ALL REQUIRED PERMITS, INSPECTIONS, ETC.
- THE FAN COIL UNITS (FCU'S) AND CEILING CASSETTES (DCA'S AND CA'S) PROVIDED UNDER THE MECHANICAL HVAC CONTRACT WILL BE PROVIDED WITH CONDENSATE PUMPS. THE ELECTRICAL CONTRACTOR SHALL FURNISH AND INSTALL A SINGLE POLE MANUAL MOTOR STARTER (THERMAL SWITCH) ADJACENT TO THE CONDENSATE PUMP, AND WIRE THE PUMP THROUGH THE SWITCH TO THE CIRCUIT FEEDING THE EQUIPMENT. WHERE THE EQUIPMENT IS 200V, 1 PHASE, PROVIDE A NEUTRAL WIRE WITH THE CIRCUIT TO THE UNIT.
- WHERE EQUIPMENT, DEVICES, LUMINAIRES, EQUIPMENT, ETC. ARE INDICATED TO BE REMOVED, THEY SHALL BE REMOVED IN THEIR ENTIRETY, INCLUDING BOXES, SUPPORTS, CONDUIT AND WIRING TO THE NEXT DEVICE IN THE SAME CIRCUIT, AND ASSOCIATED CONTROLS. IF ALL THE DEVICES ON A BRANCH CIRCUIT ARE NOT BEING REMOVED, MAINTAIN THE BRANCH CIRCUIT CONTINUOUS TO ALL THE REMAINING DEVICES.
- WHERE FIRE ALARM SYSTEMS ARE BEING PARTIALLY OR TOTALLY REMOVED, MAINTAIN THE EXISTING FIRE ALARM SYSTEM OPERATIONAL UNTIL THE NEW COMPONENTS OR SYSTEM ARE PLACED IN TO SERVICE. ONLY REMOVE THE MINIMUM DEVICES AND WIRING REQUIRED TO ACCOMMODATE THE CONSTRUCTION SCHEDULE. COORDINATE WITH THE OWNER'S FIRE ALARM SERVICE CONTRACTOR AND INCLUDE ALL REQUIRED PROGRAMMING.
- MAINTAIN THE EXISTING INTRUSION DETECTION SYSTEM IN SERVICE DURING CONSTRUCTION. REMOVE DOOR CONTACTS, KEYPADS, MOTION SENSORS, AND WIRING AS REQUIRED TO ACCOMMODATE THE CONSTRUCTION SCHEDULE. COORDINATE WITH THE OWNER'S SECURITY SERVICE CONTRACTOR AND INCLUDE ALL REQUIRED PROGRAMMING.
- MAINTAIN THE EXISTING ACCESS CONTROL SYSTEMS IN SERVICE DURING CONSTRUCTION. REMOVE CARD READERS, REQUEST-TO-EXIT DEVICES, POWER SUPPLIES, AND WIRING TO ACCOMMODATE THE CONSTRUCTION SCHEDULE. COORDINATE WITH THE OWNER'S SECURITY SERVICE CONTRACTOR AND INCLUDE ALL REQUIRED PROGRAMMING.
- DATA RACKS SHALL BE DEEP RELAY TYPE, HUBBELL #HWR400, SIZED TO ACCOMMODATE AN UNINTERRUPTIBLE POWER SUPPLY, 48 PORT PATCH PANELS, AND ETHERNET NETWORK SWITCH. PROVIDE 2-POST, FULL HEIGHT RACK WITH TWO WIRE MANAGEMENT UNITS, EXTEND A #6 AWG COPPER BONDING CONDUCTOR FROM THE DATA RACK TO PANEL #007 GROUND BUS.
- DATA CABLE SHALL BE CAT 6, PLENUM RATED, WITH BLUE JACKET, HUBBELL CAT. #CAR6P. PROVIDE A DATA CABLE FROM EACH DATA JACK TO DATA RACK. TERMINATE BOTH ENDS AND TEST CABLE AT OUTLET END. TERMINATE ON CAT 6 JACK MOUNTED IN COVER PLATE WITH LABEL. ON RACK END, TERMINATE CABLE IN 48 PORT CAT 6 PATCH PANEL.
- CAT 6 DATA JACKS SHALL BE HUBBELL #XJ6R. CAT 6 PATCH PANELS SHALL BE HUBBELL #P64R.

NO.	DATE	REVISION	BY

PETER M. MEDICA RAs016195  
MEMBER OF THE AMERICAN INSTITUTE OF ARCHITECTS

**BMA**  
BONNETT MEDICA ASSOCIATES INCORPORATED  
ARCHITECTS • PLANNERS ENGINEERS • PROJECT MANAGERS

1242 WEST CHESTER PIKE • SUITE 111  
WEST CHESTER, PA 19382  
TELEPHONE 610 • 368 • 6678

**SDE ENGINEERING, INC**

1032 JAMES DR. LEESPORT, PA 19333  
PHONE: 610.916.8500 FAX: 610.916.8501

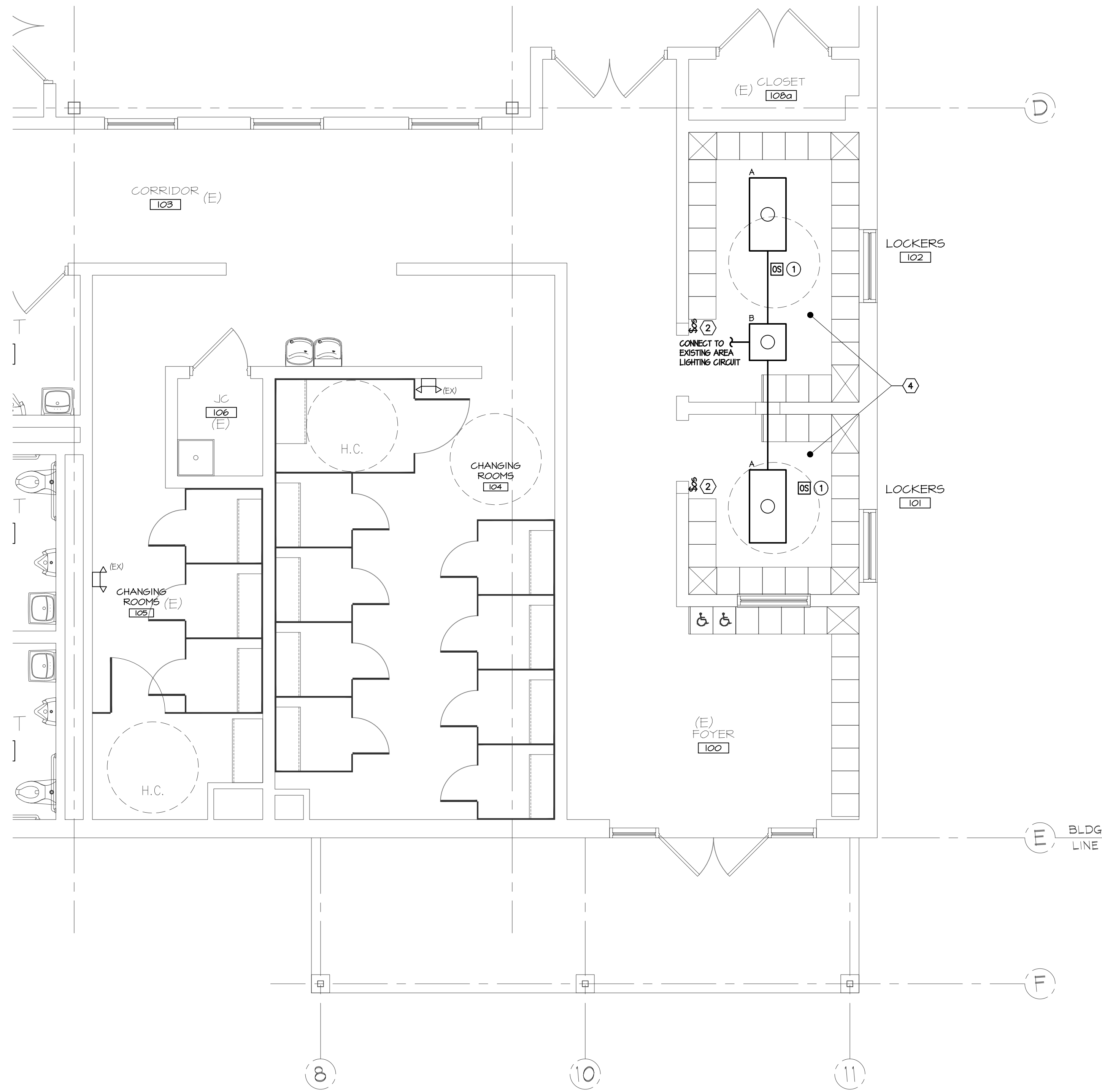
BOYERTOWN, PA 610.349.1319  
SCHUYLKILL HAVEN, PA 570.385.5549

**LEGEND & ABBREVIATIONS**

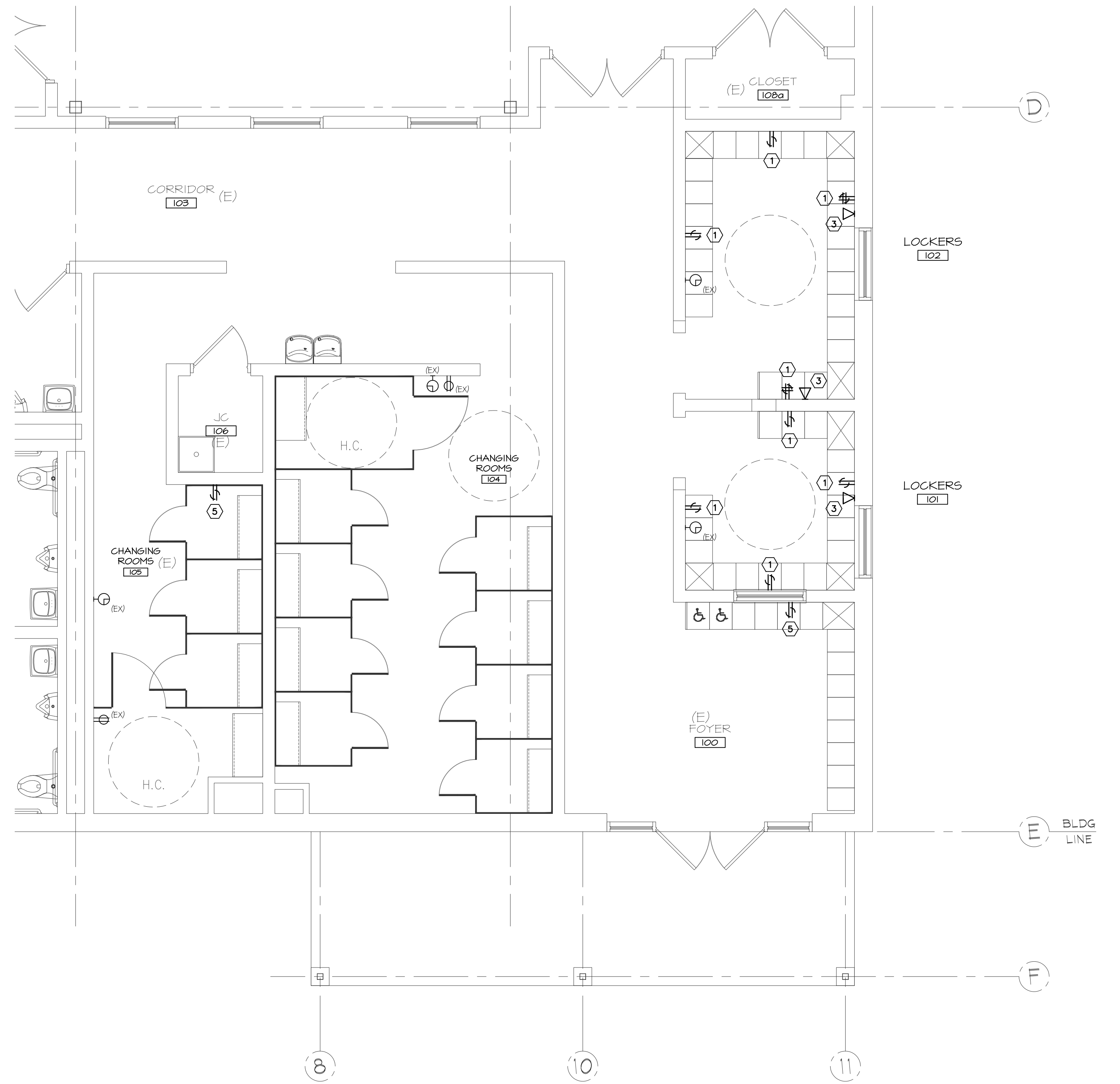
LOCKER ROOM ALTERNATIONS - WEST CAMPUS WELDING SHOP  
BERKS CAREER & TECHNOLOGY CENTER  
1057 COUNTY WELFARE ROAD  
LEESPORT, PA 19533

SITING IN BERKS COUNTY, PA.

DRAWN BY	CAR	CHECKED	SG	APPROVED	SG	CADD FILE NAME	E101.dwg
DATE	03/30/2026	SCALE	AS NOTED	DRAWING NUMBER	D-25-0485-0040-E001		



**1** PARTIAL FLOOR PLAN  
LIGHTING  
SCALE: 1/4"=1'-0"  
4' 0' 4' 0'



**2** PARTIAL FLOOR PLAN  
POWER  
SCALE: 1/4"=1'-0"  
4' 0' 4' 0'

LUMINAIRE SCHEDULE									
SYMBOL	TYPE	DESCRIPTION	MANUFACTURER (DESIGN BASE)	CATALOG NO.	LAMPS	BALLAST / DRIVER	VOLTS	MTG	REMARKS
A	2'x4'	BACK-LIT FLAT PANEL	COLUMBIA	CBT24-A-LS-ES-EDD	80+ CRI, 3500K, 3457 LUMEN, 25 WATT L.E.D. LIGHT ENGINE	MFR'S. STANDARD 10%, 0-10V DIMMING DRIVER	120-277	CR	
B	2'x2'	BACK-LIT FLAT PANEL	COLUMBIA	CBT22-A-LS-ES-EDD	80+ CRI, 3500K, 3437 LUMEN, 27 WATT L.E.D. LIGHT ENGINE	MFR'S. STANDARD 10%, 0-10V DIMMING DRIVER	120-277	CR	

**MOUNTING LEGEND**  
 C= CEILING  
 W= WALL  
 S= SURFACE  
 R= RECESSED  
 P= PENDANT  
 T= TRACK

**KEYED DEMOLITION NOTES**

- DISCONNECT AND REMOVE EXISTING RECEPTACLE. REMOVE ASSOCIATED WIRING BACK TO PANEL OR NEXT RETAINED DEVICE. FURNISH AND INSTALL BLANK COVER PLATE ON OUTLET BOX.
- DISCONNECT AND REMOVE WALL SWITCH. REMOVE ASSOCIATED WIRING TO LIGHT FIXTURES. FURNISH AND INSTALL BLANK COVER PLATE ON OUTLET BOX.
- DISCONNECT AND REMOVE DATA OUTLETS. REMOVE ASSOCIATED DATA CABLES BACK TO DATA RACK ON MEZZANINE.
- DISCONNECT AND REMOVE (2) 2'x4' LIGHT FIXTURES. RETAIN CIRCUIT FOR CONNECTION TO NEW LIGHT FIXTURES.
- DISCONNECT AND REMOVE RECEPTACLE. REMOVE ASSOCIATED WIRING BACK TO NEXT RETAINED DEVICE, MAINTAINING CIRCUIT INTEGRITY.

**KEYED NEW WORK NOTES**

- ACUITY CONTROLS NCM PDT 9 RJB CEILING OCCUPANCY SENSOR WITH RECESSED MOUNTING BRACKET.

PETER M. MEDICA RA016195  
 MEMBER OF THE AMERICAN INSTITUTE OF ARCHITECTS  
**BMA**  
**BONNETT MEDICA ASSOCIATES INCORPORATED**  
 ARCHITECTS • PLANNERS  
 ENGINEERS • PROJECT MANAGERS  
 1242 WEST CHESTER PIKE • SUITE 11  
 WEST CHESTER, PA 19382  
 TELEPHONE 610-368-6678

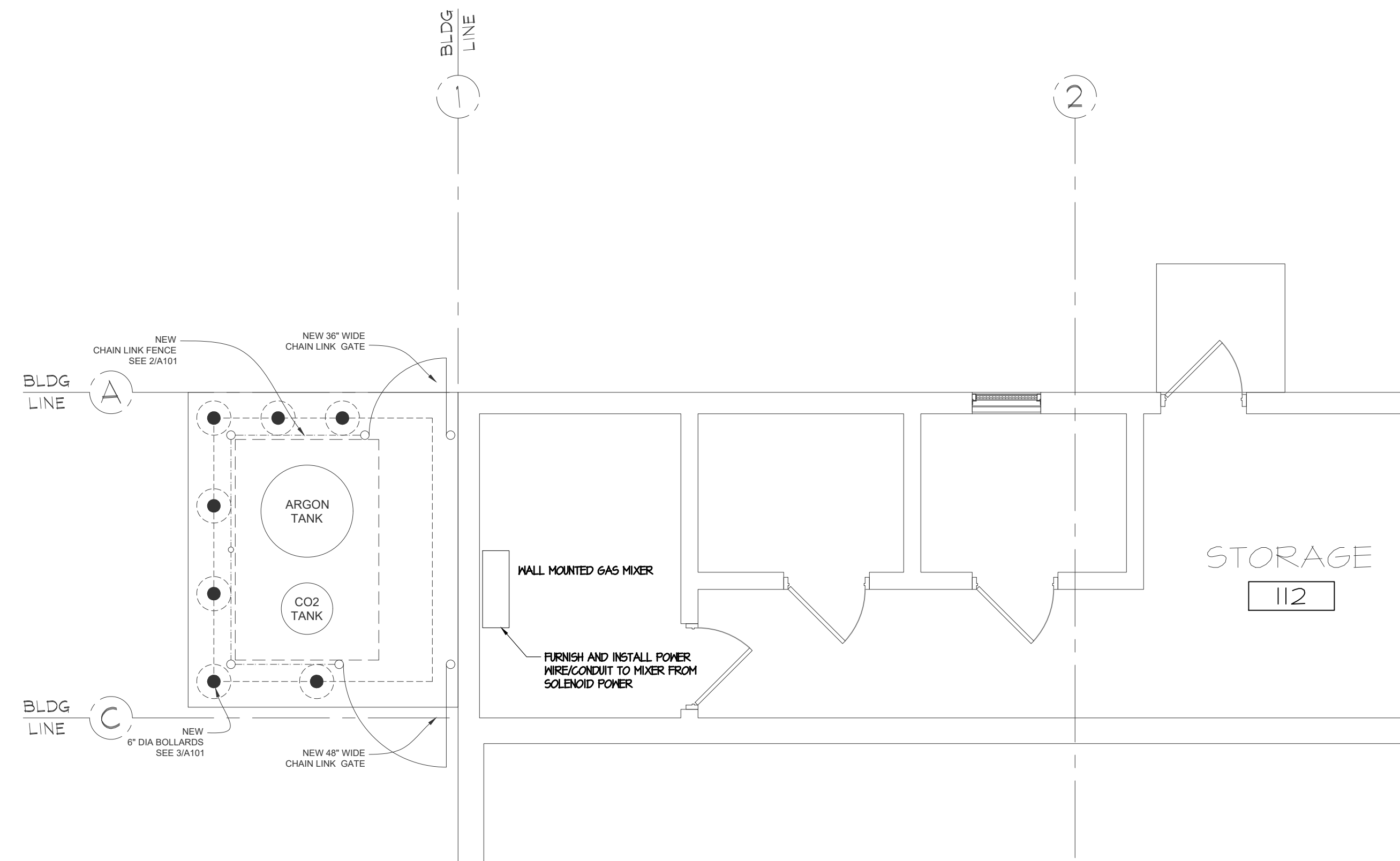
NO.	DATE	REVISION	BY

**SYSTEMS DESIGN ENGINEERING, INC**  
 1032 JAMES DR. LEESPORT, PA 19533 BOYERTOWN, PA 610.349.1319  
 PHONE: 610.916.8500 FAX: 610.916.8501 SCHUYLKILL HAVEN, PA 570.385.5549

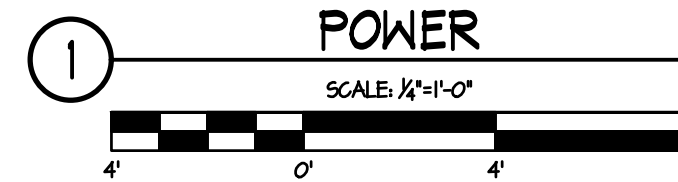
**PARTIAL FLOOR PLANS**  
 LOCKER ROOM ALTERNATIONS - WEST CAMPUS WELDING SHOP  
 BERKS CAREER & TECHNOLOGY CENTER  
 1057 COUNTY WELFARE ROAD  
 LEESPORT, PA 19533  
 SITUATE IN BERKS COUNTY, PA

DRAWN BY CAR	CHECKED SG	APPROVED SG	CADD FILE NAME E101.dwg
DATE 03/30/2026	SCALE AS NOTED	DRAWING NUMBER D-25-0485-0040-E101	

© COPYRIGHT 2024, Systems Design Engineering, Inc. - Q:\Projects\Berks Career Technology Center\250485-0039 Welding Shop Changing Area\01 - Design\Photos\Drawings\Electrical\101.dwg - March 30, 2024 3:38 pm by ChrisP



**PARTIAL FLOOR PLAN  
POWER**



© Copyright 2024, Systems Design Engineering, Inc. - Q:\Projects\Medica\Current Technology Center\2510485-0049 Welding Shop\Change Area\01 - Design\Plan\Drawing\Electrical\101.dwg - March 30, 2024 3:28 pm by ChadK

NO.	DATE	REVISION	BY

PETER M. MEDICA RA016195  
MEMBER OF THE AMERICAN  
INSTITUTE OF ARCHITECTS  
**BMA**  
**BONNETT  
MEDICA  
ASSOCIATES  
INCORPORATED**  
ARCHITECTS • PLANNERS  
ENGINEERS • PROJECT MANAGERS  
1242 WEST CHESTER PIKE • SUITE 11  
WEST CHESTER, PA 19382  
TELEPHONE 610 • 368 • 6678

**SYSTEMS DESIGN  
ENGINEERING, INC**  
1032 JAMES DR., LEESPORT, PA 19533 BOYERTOWN, PA 610.349.1319  
PHONE: 610.916.8500 FAX: 610.916.8501 SCHUYLKILL HAVEN, PA 570.385.5549

**PARTIAL FLOOR PLAN**  
LOCKER ROOM ALTERNATIONS - WEST CAMPUS WELDING SHOP  
BERKS CAREER & TECHNOLOGY CENTER  
1057 COUNTY WELFARE ROAD  
LEESPORT, PA 19533  
SITUATE IN  
BERKS COUNTY, PA.

DRAWN BY CAR	CHECKED SG	APPROVED SG	CADD FILE NAME E101.dwg
DATE 03/30/2026	SCALE AS NOTED	DRAWING NUMBER D-25-0485-0040-E102	