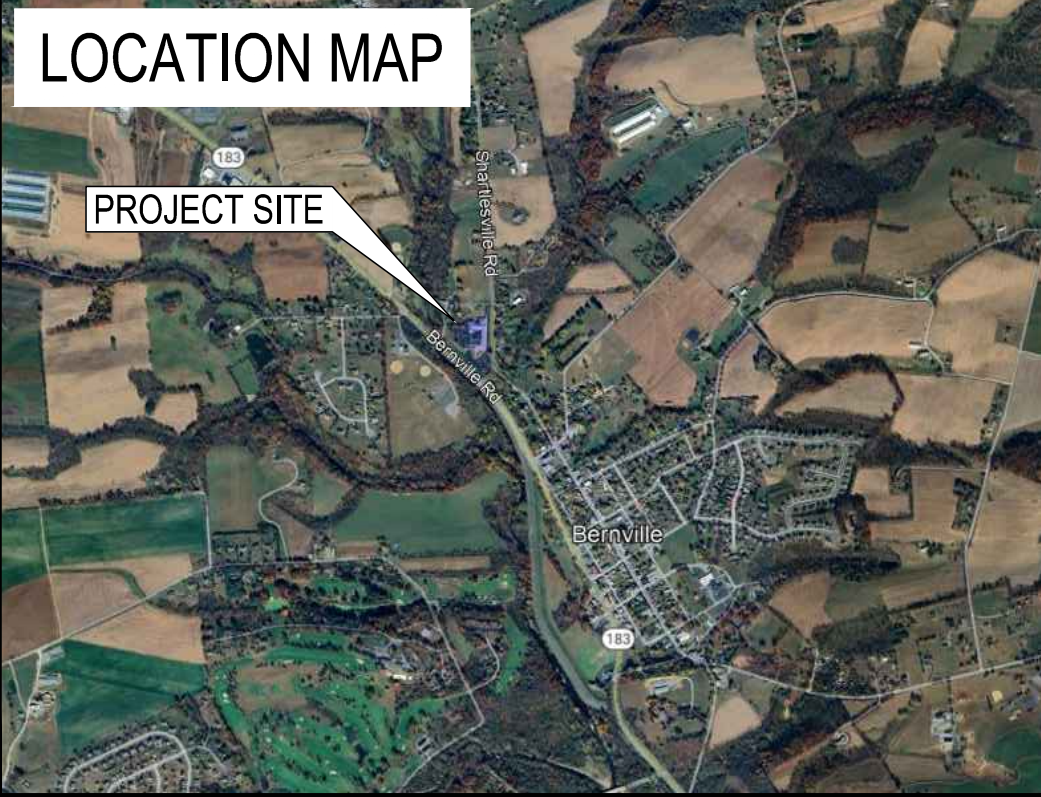


FLOORING REPLACEMENT AT
PENN-BERVILLE ELEMENTARY SCHOOL
TULPEHOCKEN AREA SCHOOL DISTRICT
24 SHARTLESVILLE ROAD, BERVILLE BOROUGH, BERKS COUNTY, PA

LOCATION MAP



SITE MAP



DRAWING INDEX

ARCHITECTURAL

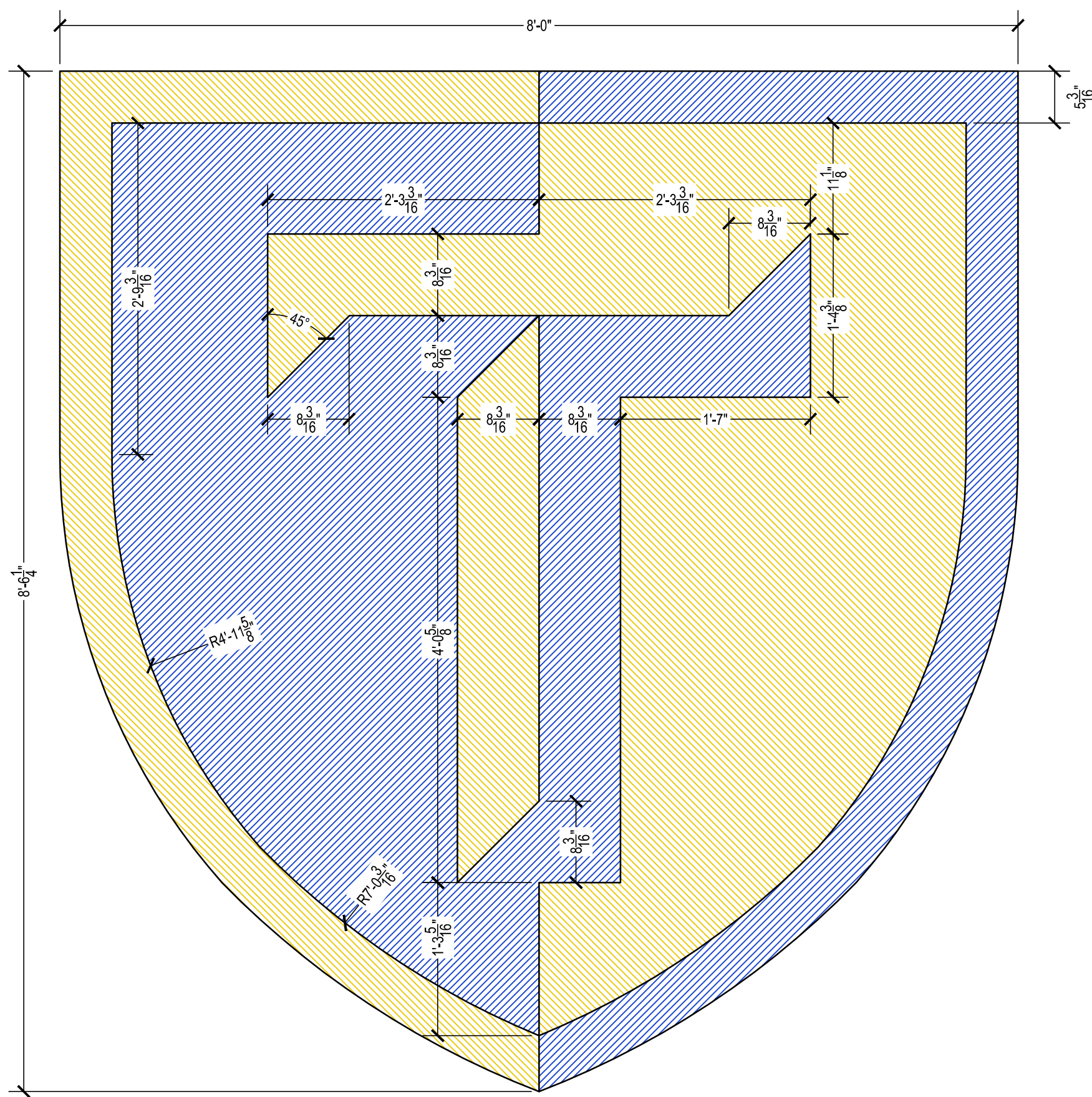
- A-0 COVER SHEET
A-1 DEMOLITION PLAN
A-2 FLOOR FINISH PLAN, ROOM FINISH SCHEDULE, AND DETAILS

ABBREVIATIONS

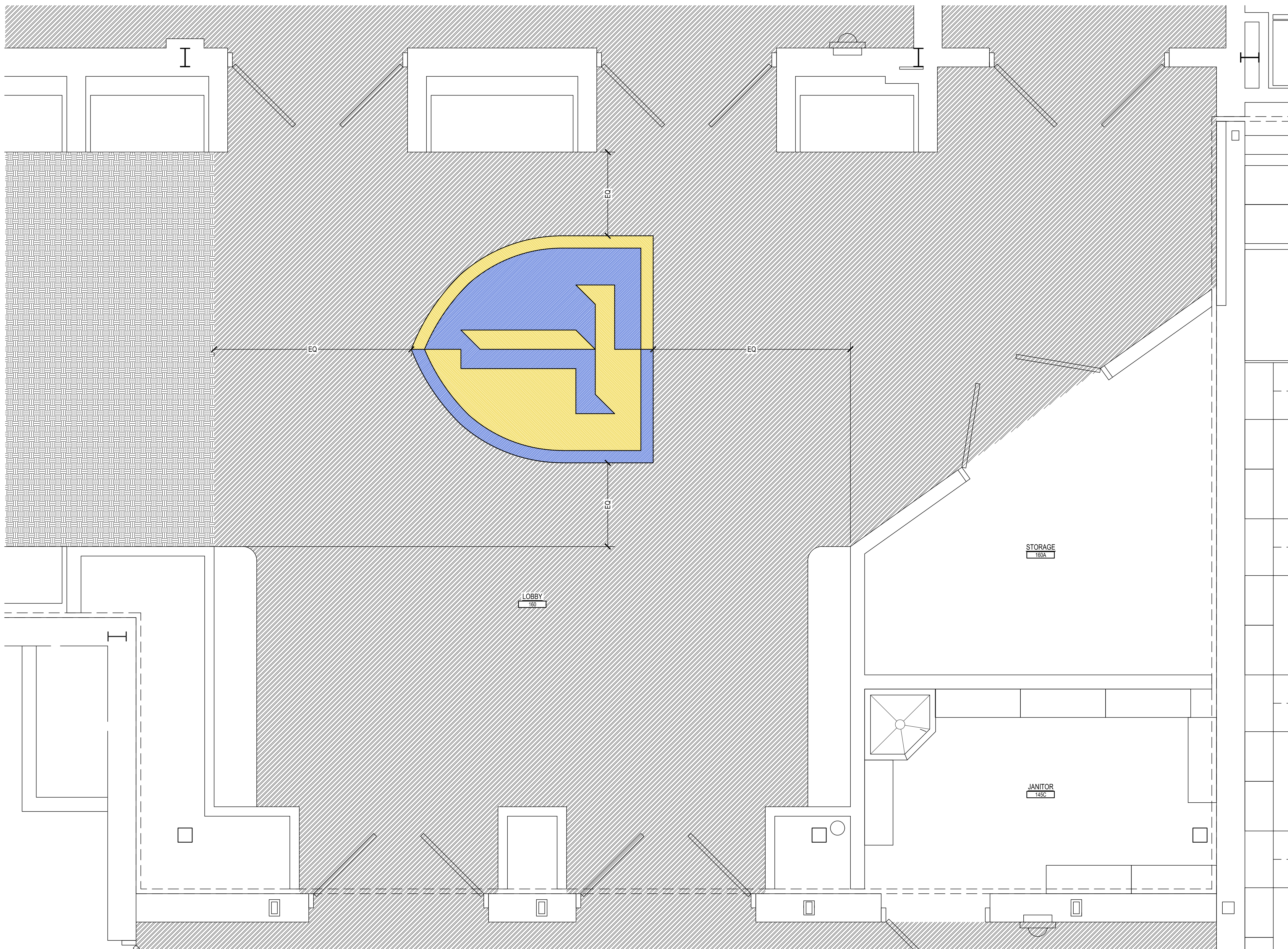
AC - ACOUSTICAL
ALUM - ALUMINUM
AT - ALUMINUM THRESHOLD
CG - CORNER GUARD
CJ - CONTROL JOINT
CMU - CONCRETE MASONRY UNIT
CONC - CONCRETE
COORD - COORDINATE
D - DEPTH
DEMO - DEMOLITION
DIA - DIAMETER
DN - DOWN
ELEV - ELEVATION
EQ - EQUAL
ETR - EXISTING TO REMAIN
EW - EACHWAY
EWC - ELECTRIC WATER COOLER
EXIST - EXISTING
EXP JT - EXPANSION JOINT
FD - FLOOR DRAIN
GALV - GALVANIZED
GYP BD - GYPSUM BOARD
H - HIGH
HORIZ - HORIZONTAL
L - LONG
MAX - MAXIMUM
MFR - MANUFACTURER
MIN - MINIMUM
MO - MASONRY OPENING
MT - MARBLE THRESHOLD
NIC - NOT IN CONTRACT
OC - ON CENTER
PTD - PAINTED
R - RADIUS
REIN - REINFORCED
RO - ROUGH OPENING
SF - SQUARE FEET
SS - STAINLESS STEEL
TYP - TYPICAL
UNO - UNLESS NOTED OTHERWISE
V - VERTICAL
VCT - VINYL COMPOSITE TILE
VIF - VERIFY IN FIELD
VTR - VENT TO ROOF
W - WIDE
WD - WOOD

FLOORING LEGEND

- WALK OFF CARPET
- HVT FIELD COLOR
- HVT ACCENT COLOR 1
- HVT ACCENT COLOR 2



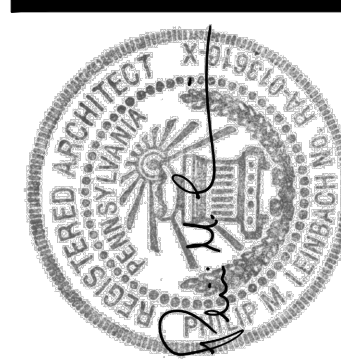
1
A-0 LOGO INLAY DETAIL
SCALE: 1" = 1'-0"



ENLARGED LOBBY A160 PLAN
SCALE: 1/2" = 1'-0"

AEM ARCHITECTS INC.

3700 PERKIOMEN AVENUE, READING, PA 19606-2795
Phone: 610.779.3220 Fax: 610.779.9022 www.aem-arch.com



AEM ARCHITECTS INC.
3700 PERKIOMEN AVENUE, READING, PA 19606-2795
Phone: 610.779.3220 Fax: 610.779.9022 www.aem-arch.com

COVER SHEET

FLOORING REPLACEMENT AT THE
PENN-BERVILLE ELEMENTARY SCHOOL
TULPEHOCKEN AREA SCHOOL DISTRICT
24 SHARTLESVILLE RD, BERVILLE, BERKS COUNTY, PA

ALL DIMENSIONS AND EXISTING CONDITIONS
SHALL BE CHECKED AND VERIFIED
BY THE CONTRACTOR AT THE SITE.

JOB NO.: 25018.00
DRAWN BY: SRH
DATE: 10.22.25

A-0

" G.C. SHALL COORDINATE DEMOLITION WITH ALL CONTRACTORS "

- KEYED SALVAGE NOTES:

- | | |
|---|---------------------------------------------------------------------|
| A | SALVAGE, PROTECT AND STORE EXPANSION JOINT COVER FOR REINSTALLATION |
| B | - |

** ALL DEMOLITION INDICATED ON THIS SHEET SHALL BE PERFORMED
BY THE G.C. UNLESS OTHERWISE NOTED **

B) ALL REMAINING SURFACES TO BE EXPOSED AFTER DEMOLITION SHALL BE PATCHED, REPAIRED AND REFINISHED TO MATCH EXISTING ADJACENT FINISH CONDITIONS. ALL REMAINING SURFACES TO BE CONCEALED BY NEW WORK SHALL BE PREPARED AS REQUIRED FOR THE NEW WORK. REFER TO SPECIFICATIONS AND PRODUCT REQUIREMENTS FOR SPECIFIC CUTTING AND PATCHING METHODS REQUIRED FOR DEMOLITION WORK.

C) WHERE EQUIPMENT OR SYSTEMS ARE INDICATED FOR DEMOLITION, ALL PARTS AND ASSEMBLIES OF THE EQUIPMENT OR SYSTEMS SHALL BE REMOVED INCLUDING BLOCKING, SUPPORTS, HANGERS, ETC.

D) CONTRACTORS SHALL REVIEW ALL EXISTING CONDITIONS TO UNDERSTAND THE SCOPE OF THE WORK PRIOR TO SUBMITTING BIDS.

E) ALL DEMOLITION SHALL BE COORDINATED WITH PROJECT PHASING SCHEDULE AND THE PROGRESS OF THE WORK TO ENSURE ALL EXISTING SYSTEMS REMAIN OPERABLE DURING WORK.

FOR FLOORING DEMOLITION, REFER TO FLOOR FINISH PLAN ON DRAWING A-2 AND COORDINATE WITH ACCEPTED ALTERNATES TO DETERMINE FULL EXTENT OF DEMOLITION. ALL AREAS RECEIVING NEW FLOORING SHALL HAVE EXISTING FLOORING AND RESILIENT BASE REMOVED AND PROPERLY PREPPED FOR NEW FLOORING



ROOM NUMBER	ROOM DESCRIPTION	FLOOR FINISH SCHEDULE										REMARKS	ROOM NUMBER
		FLOORS					BASES						
		MATERIALS					MATERIALS						
		HVT	LVT	WALK-OFF CARPET	SEALED CONCRETE	RUBBER TILE	HVT BASE - 6"	RESILIENT BASE - 4"					
		1	2	3	4	5	1	2	-	-			
129	CORRIDOR	1					1				FLOORING ALTERNATE SERIES A120	129	
130	SPECIAL EDUCATION		2					2			FLOORING ALTERNATE SERIES A110	130	
132	SPECIAL EDUCATION		2					2			FLOORING ALTERNATE SERIES A110	132	
135	CORRIDOR	1					1				-	135	
136	CORRIDOR	1					1				FLOORING ALTERNATE SERIES A130	136	
140	CORRIDOR	1				5	1				-	140	
141	SMALL GROUP				4			2			FLOORING ALTERNATE SERIES A140	141	
145	CORRIDOR	1					1				-	145	
156	CORRIDOR	1					1				-	156	
160	LOBBY	1		3			1				-	160	
161	CAFETERIA	1					1				-	161	
GENERAL NOTES:												KEYED ROOM FINISH SCHEDULE NOTES:	
- THE ROOM FINISH SCHEDULE INDICATES PRIMARY FINISHES, MATERIALS, SUBSTRATES, ETC. IN A SPECIFIC ROOM OR AREA. ALL DRAWINGS (DETAILS, ELEVATIONS, PLANS, ETC.) AND SPECIFICATIONS SHALL BE REVIEWED TO CORRELATE THE COMPLETE EXTENT OF WORK REQUIRED FOR EACH AREA OR ROOM.												NOTE 1: ---	
												NOTE 2: ---	

GENERAL NOTES:
 - THE ROOM FINISH SCHEDULE INDICATES PRIMARY FINISHES, MATERIALS, SUBSTRATES, ETC. IN A SPECIFIC ROOM OR AREA. ALL DRAWINGS (DETAILS, ELEVATIONS, PLANS, ETC.) AND SPECIFICATIONS SHALL BE REVIEWED TO CORRELATE THE COMPLETE EXTENT OF WORK REQUIRED FOR EACH AREA OR ROOM.

KEYED ROOM FINISH SCHEDULE NOTES:
 NOTE 1: —
 NOTE 2: —

FLOORING LEGEND

- LVT
- WALK OFF CARPET
- HVT
- RUBBER STAIR TREADS
- POLISHED CONCRETE

FLOORING NOTES

- 1) REFER TO ROOM FINISH SCHEDULE FOR ALL AREAS.
- 2) REFER TO THIS DRAWING FOR REQUIRED TRANSITIONS BETWEEN FLOORING TYPES.
- 3) EXISTING CONCRETE SLAB SHALL BE FLASHED PATCHED WITH HYDRAULIC CEMENT UNDERLAYMENT TO PROVIDE A SMOOTH FLUSH TRANSITION FROM NEW RESILIENT FLOORING TO EXISTING FLOORING TO REMAIN.
- 4) REFER TO ALTERNATE DESCRIPTIONS IN THE SPECIFICATIONS FOR ALTERNATES TO EXTEND SCOPE OF WORK FOR FLOOR REPLACEMENT

RENOVATION NOTES

- 1) ALUMINUM PLATE THRESHOLD - REFER TO DETAIL 2/A-2
- 2) REINSTALL SALVAGED EXPANSION JOINT COVER
- 3) RUBBER STAIR TREADS - REFER TO DETAIL 3/A-2
- 4) CUSTOM CUT LOGO IN HVT - REFER TO DETAIL 1/A-3

WALK-OFF CARPET

CARPET TO RUBBER ADAPTER

EXISTING CONSTRUCTION

HVT

WALK-OFF CARPET

SELF-LEVELER

EXISTING CONSTRUCTION

HVT

RECESSED MAT INFILL DETAIL

SCALE: 6" = 1'-0"

HVT

EXISTING DOOR

EXISTING MARBLE THRESHOLD

EXISTING CONSTRUCTION

EXISTING CERAMIC TILE

HVT

HVT TO CERAMIC TILE TRANSITION DETAIL

SCALE: 6" = 1'-0"

COUNTERSUNK STAINLESS STEEL EXPANSION ANCHORS (ONE SIDE ONLY)

1/8" THICK, MILL FINISH ALUMINUM PLATE THRESHOLD - REFER TO DETAIL 2/A-2

EXISTING CONSTRUCTION

HVT

HVT TO WOOD TRANSITION

SCALE: 6" = 1'-0"

EXISTING DOOR

TILE REDUCER

EXISTING QUARRY TILE

EXISTING CONSTRUCTION

HVT

QUARRY TILE TO HVT TRANSITION DETAIL

SCALE: 6" = 1'-0"

LVT, HVT, RUBBER

SLIM LINE TRANSITION

EXISTING CONSTRUCTION

LVT, HVT, RUBBER

HVT TO LVT TRANSITION DETAIL

SCALE: 6" = 1'-0"

EXISTING TERRAZZO

EXISTING METAL DIVIDER STRIP

FLASH PATCH - REFER TO DETAIL

HVT

SEALED CONCRETE TO TERRAZZO TRANSITION DETAIL

SCALE: 6" = 1'-0"

EXISTING VCT, RUBBER

EXISTING FLASHPATCH

FLASH PATCH - REFER TO DETAIL

HVT

TYPICAL UNEVEN FLOOR TRANSITION

SCALE: 6" = 1'-0"

EXISTING FLASHPATCH

FLASH PATCH - REFER TO DETAIL

HVT

TYPICAL UNEVEN FLOOR TRANSITION

SCALE: 6" = 1'-0"

UNEVEN FLOOR CONDITION

FLASH PATCH MAXIMUM SLOPE 1/8" 12" TO A FEATHER EDGE CONDITION INCLUDED IN BASE BID.

1

A-2

TYPICAL FLASH PATCH DETAIL

SCALE: 1/4" = 1'-0"

FLOOR EXPANSION JOINT

ALUMINUM PLATE THRESHOLD

NEATLY CUT AROUND DOOR FRAME AND WALL - LEAVE AN 1/8" JOINT AND APPLY SEALANT AT EDGE OF PLATE

EDGE OF WOOD ATHLETIC FLOOR

2

A-2

ALUMINUM PLATE THRESHOLD PLAN

SCALE: 1-1/2" = 1'-0"

REMOVE EXISTING TERRAZZO TILE

REMOVE EXISTING METAL STAIR NOSING

PATCH CONCRETE STAIR NOSING WITH HIGH-STRENGTH CONCRETE PATCHING MORTAR TO RESTORE ORIGINAL PROFILE

3

A-2

TYPICAL STAIR NOSING DETAIL

SCALE: 1 1/2" = 1'-0"

PREPARE AND PAINT EXISTING, REPAIRED CONCRETE RISERS

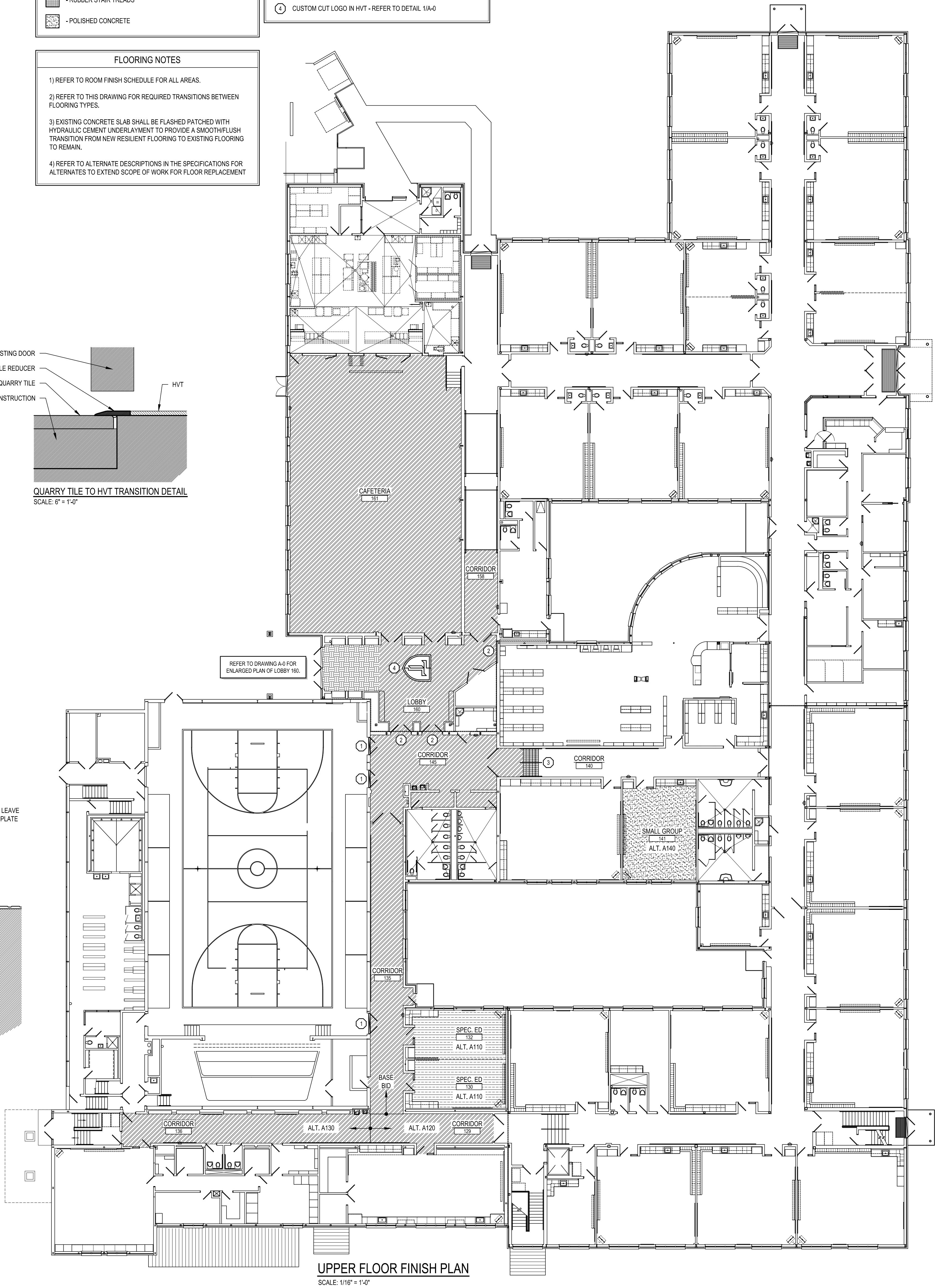
INSTALL RUBBER STAIR TREADS

3

A-2

TYPICAL STAIR NOSING DETAIL

SCALE: 1 1/2" = 1'-0"



UPPER FLOOR FINISH PLAN
 SCALE: 1/16" = 1'-0"