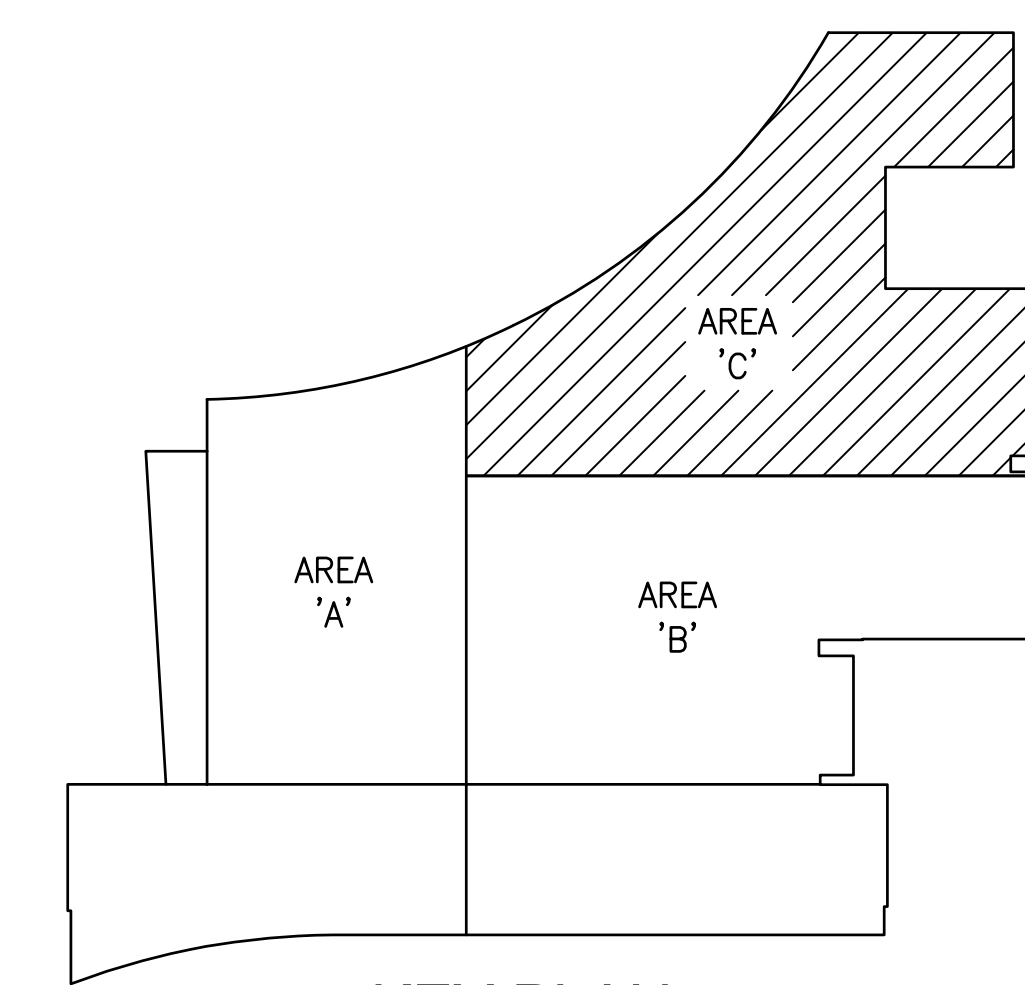


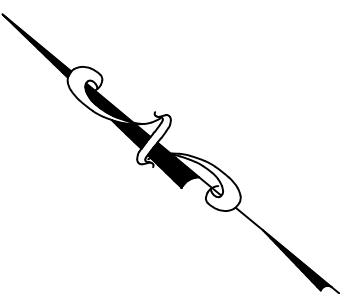
FLOOR PLAN - LEVEL 2
SCALE: 1/8" = 1'-0"

DRAWING NOTES:

1. DISCONNECT EXISTING UNIT HEATER FOR REMOVAL. REMOVE ALL ASSOCIATED ELECTRICAL EQUIPMENT, CONDUIT AND WIRING.
2. DISCONNECT EXISTING UNIT HEATER. EXISTING WIRING TO REMAIN, MODIFY/EXTEND TO NEW UNIT HEATER.
3. DISCONNECT EXISTING BOILER FEED PUMP FOR REMOVAL. REMOVE ALL ASSOCIATED ELECTRICAL EQUIPMENT, CONDUIT AND WIRING.
4. DISCONNECT EXISTING GAS FIRED BOILER FOR REMOVAL. REMOVE ALL ASSOCIATED ELECTRICAL EQUIPMENT, CONDUIT AND WIRING.
5. DISCONNECT EXISTING VACUUM PUMP FOR REMOVAL. REMOVE ALL ASSOCIATED ELECTRICAL EQUIPMENT, CONDUIT AND WIRING.



KEY PLAN



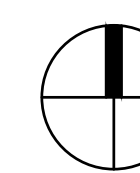
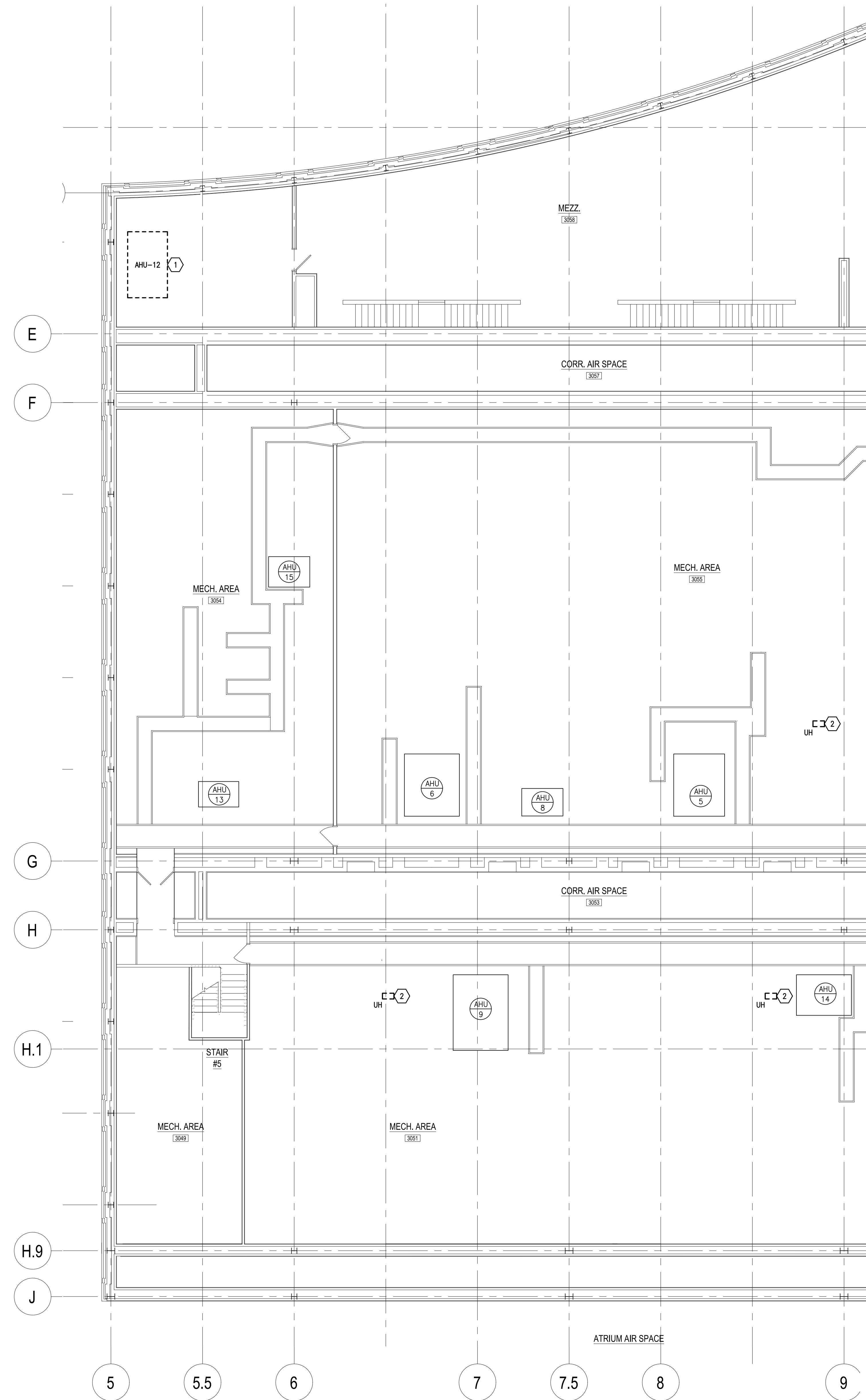
CONSOLIDATED ENGINEERS
102 James Drive
Leesport, PA 19533
Tel: 610-916-1600 Fax: 610-916-1640
Internet: www.consolidatedengineers.com



AEM ARCHITECTS INC.
3700 PERKALOMEN AVENUE, READING, PA 19686-2756
Phone: 610-755-3200 Fax: 610-755-3242
www.aemarch.com

ELECTRICAL LEVEL 2 - AREA 'C' DEMOLITION
STEAM BOILER REPLACEMENT FOR ENERSYS
2366 BERNVILLE ROAD, BERN TOWNSHIP, BERKS COUNTY, PENNSYLVANIA

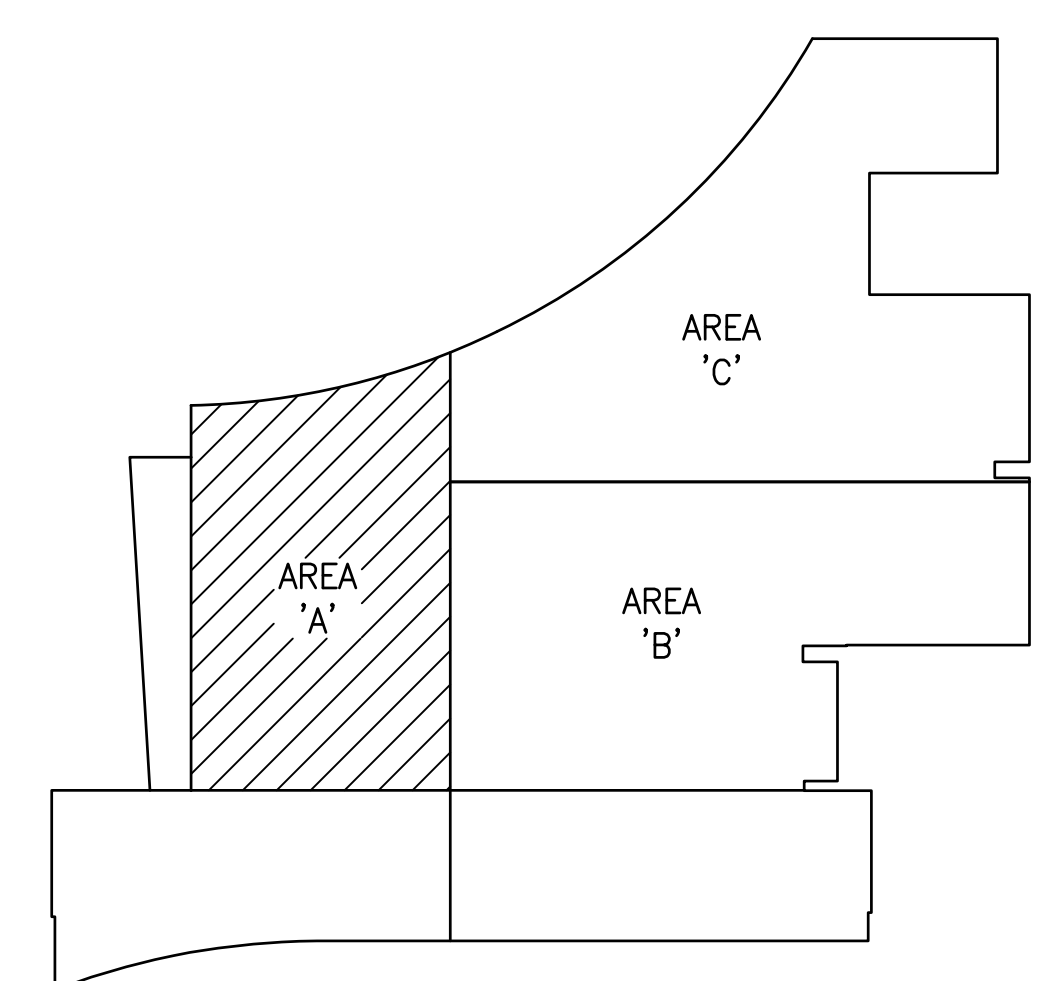
ALL DIMENSIONS AND EXISTING CONDITIONS
SHALL BE CHECKED AND VERIFIED
BY THE CONTRACTOR AT THE SITE.
JOB NO.: 18037.03
DRAWN BY: RK
DATE: 07.23.20



FLOOR PLAN - LEVEL 3
SCALE: 1/8" = 1'-0"

DRAWING NOTES:

1. DISCONNECT EXISTING AHU-12 FOR REMOVAL. REMOVE ALL ASSOCIATED ELECTRICAL EQUIPMENT. EXISTING 480V, 20A, 3Ø CIRCUIT TO REMAIN, MODIFY/EXTEND TO NEW AHU-12.
2. DISCONNECT EXISTING UNIT HEATER. REMOVE ALL ASSOCIATED ELECTRICAL, CONDUIT AND WIRING.

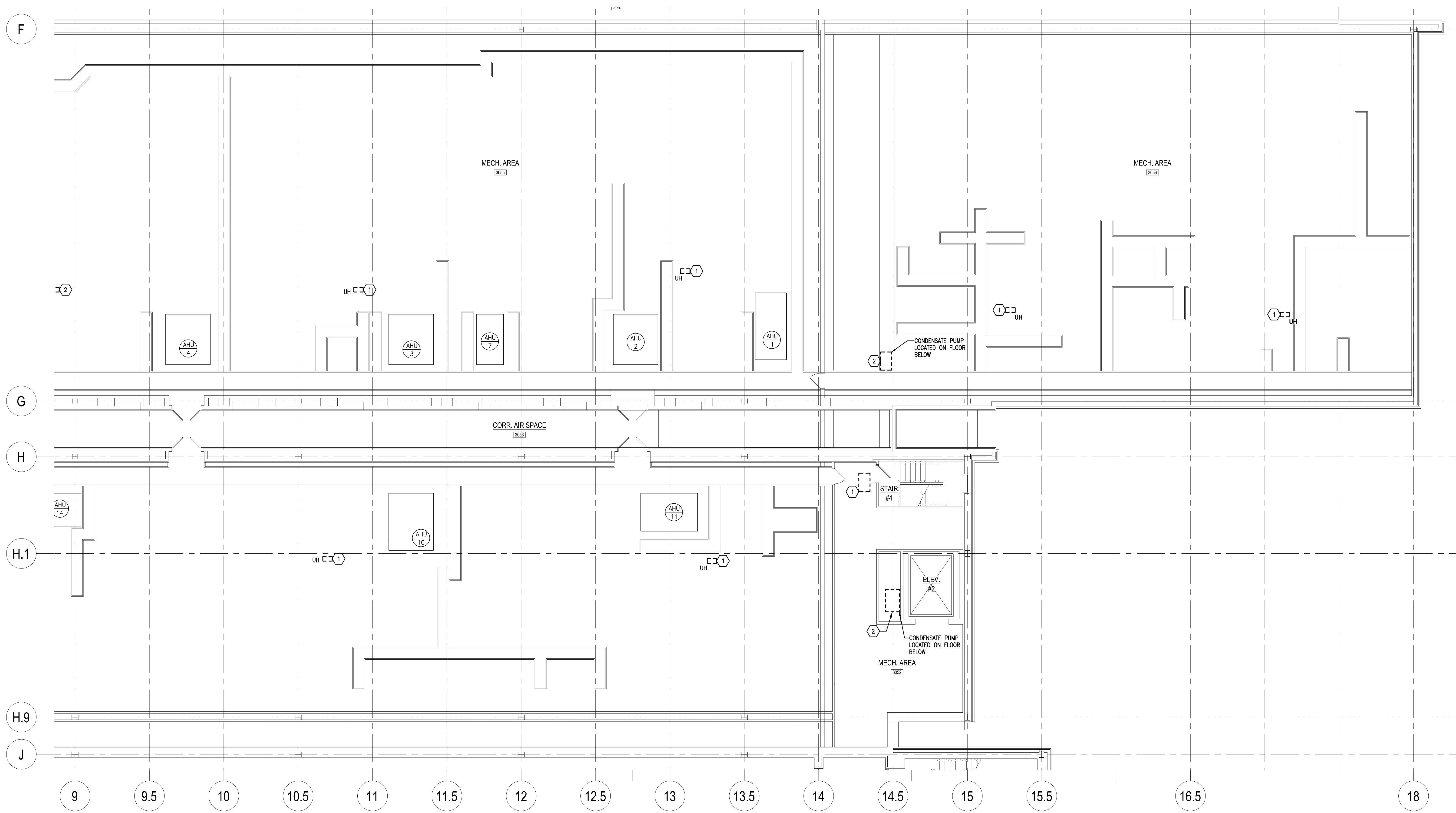


KEY PLAN

ELECTRICAL LEVEL 3 - AREA 'A' DEMOLITION
STEAM BOILER REPLACEMENT FOR
ENERSYS
2366 BERNVILLE ROAD, BERN TOWNSHIP, BERKS COUNTY, PENNSYLVANIA

ALL DIMENSIONS AND EXISTING CONDITIONS
SHALL BE CHECKED AND VERIFIED
BY THE CONTRACTOR AT THE SITE.

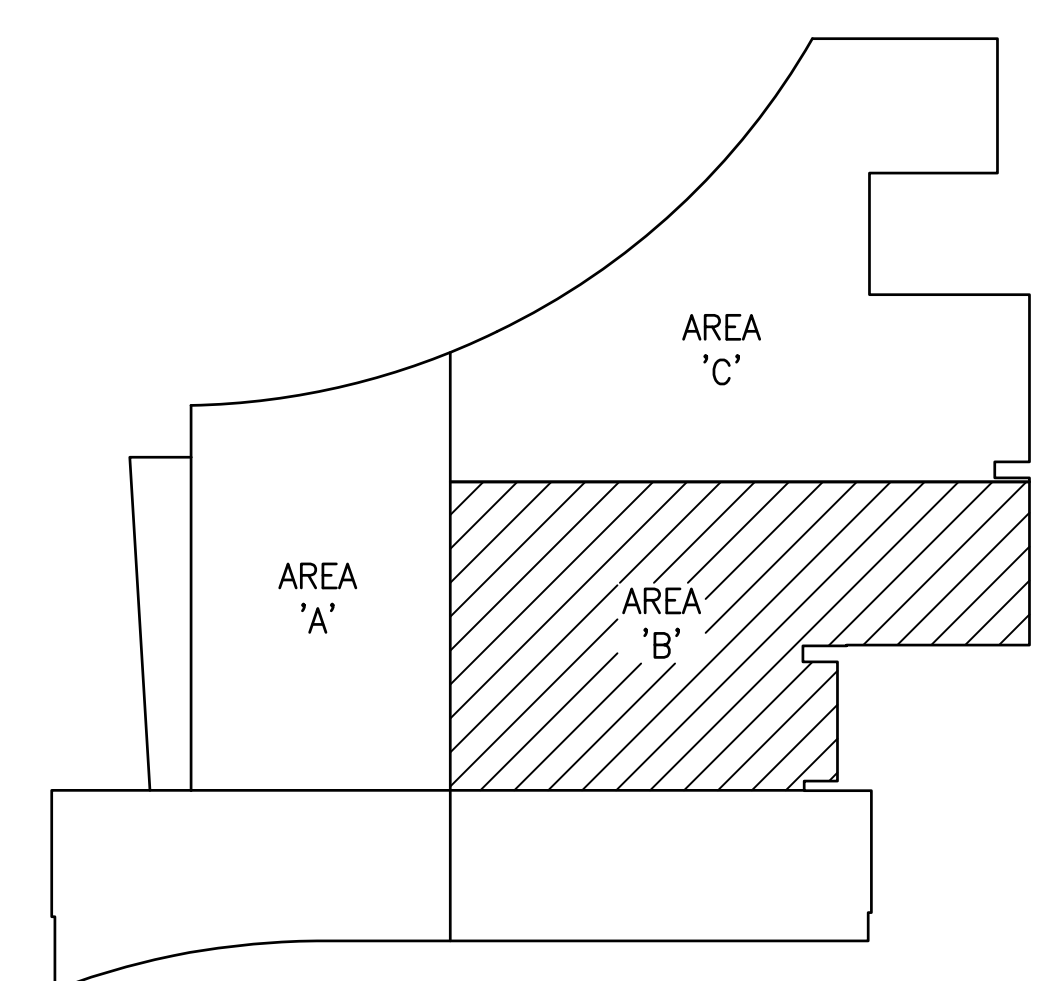
JOB NO.: 18037.03
DRAWN BY: RK
DATE: 07.23.20



FLOOR PLAN - LEVEL 3
SCALE: 1/8" = 1'-0"

DRAWING NOTES:

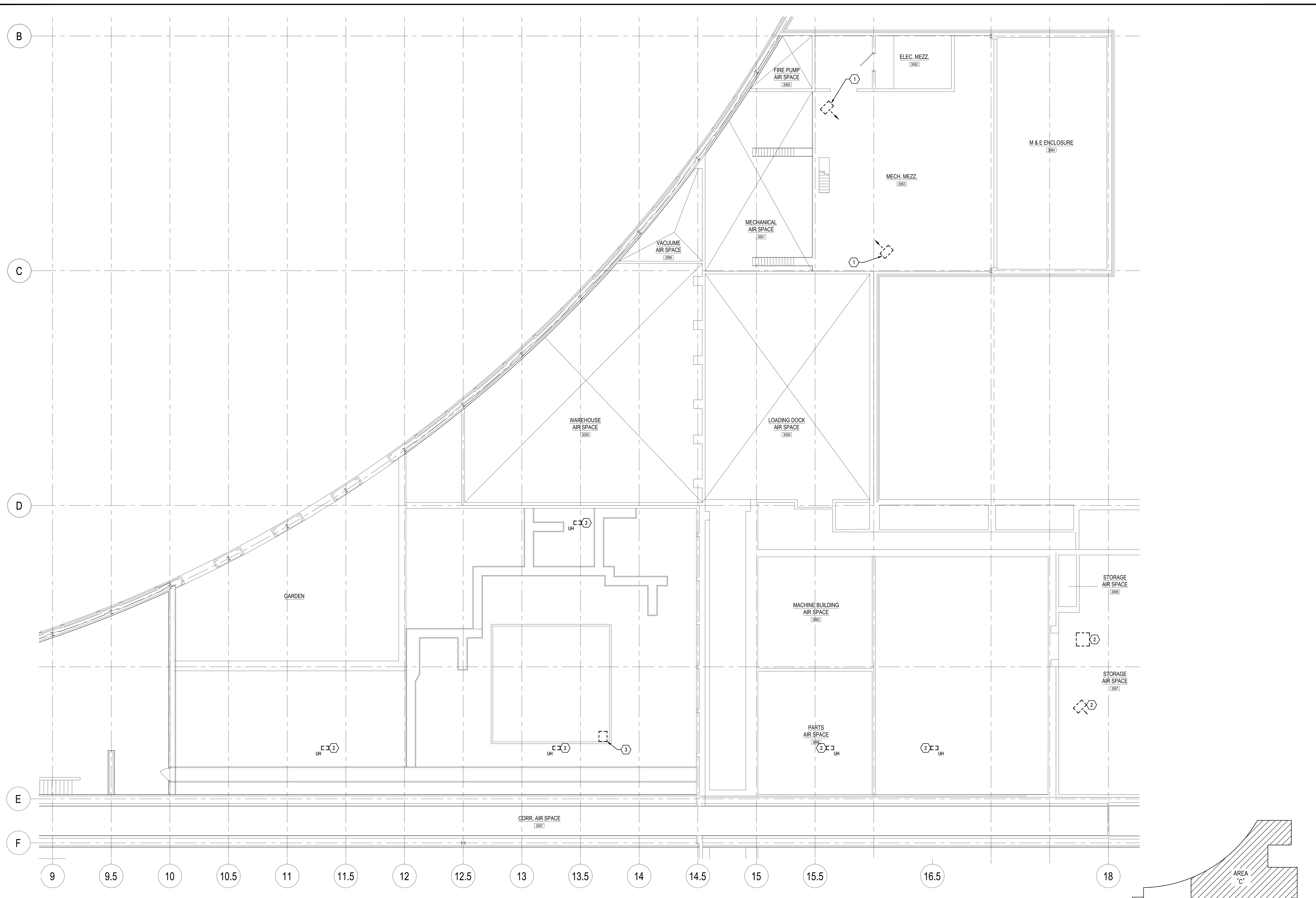
1. DISCONNECT EXISTING UNIT HEATER. REMOVE ALL ASSOCIATED ELECTRICAL EQUIPMENT, CONDUIT AND WIRING.
2. DISCONNECT EXISTING CONDENSATE PUMP TO ALLOW REMOVAL. REMOVE ALL ASSOCIATED ELECTRICAL EQUIPMENT, CONDUIT AND WIRING.



KEY PLAN



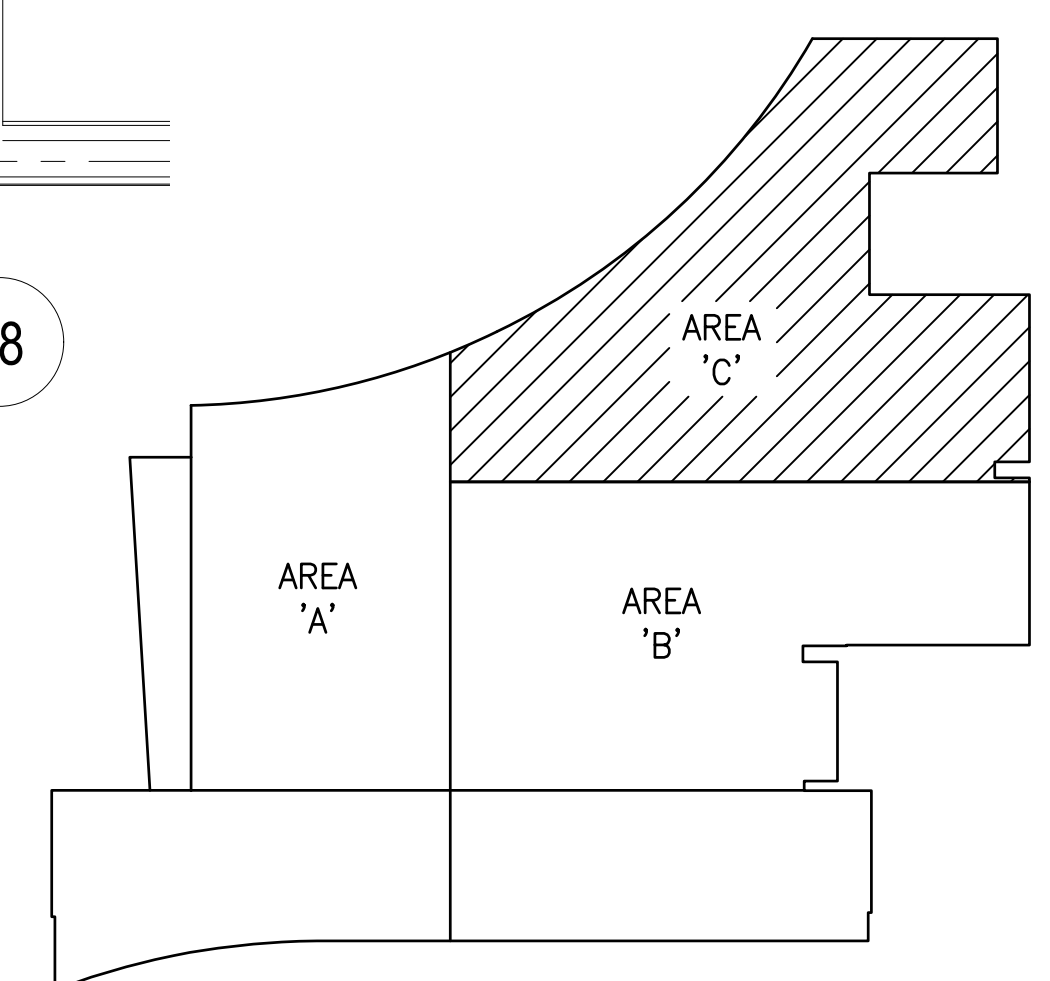
G:\PROJECTS\20-2756-112-DESIGN\1-ELECTRICAL\1-ELECTRICAL.DWG RYANK



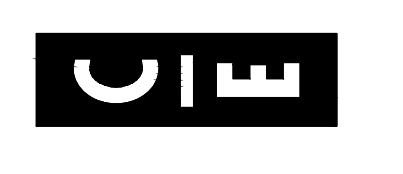
FLOOR PLAN - LEVEL 3
 SCALE: 1/8" = 1'-0"

DRAWING NOTES:

1. DISCONNECT EXISTING UNIT HEATER FOR REMOVAL. REMOVE ALL ASSOCIATED ELECTRICAL EQUIPMENT. EXISTING CIRCUIT SHALL REMAIN MODIFIED/EXTEND TO NEW UNIT HEATER.
2. DISCONNECT EXISTING UNIT HEATER. REMOVE ALL ASSOCIATED ELECTRICAL EQUIPMENT, CONDUIT AND WIRING.
3. DISCONNECT EXISTING CONDENSATE PUMP FOR REMOVAL. REMOVE ALL ASSOCIATED ELECTRICAL EQUIPMENT, CONDUIT AND WIRING.



KEY PLAN



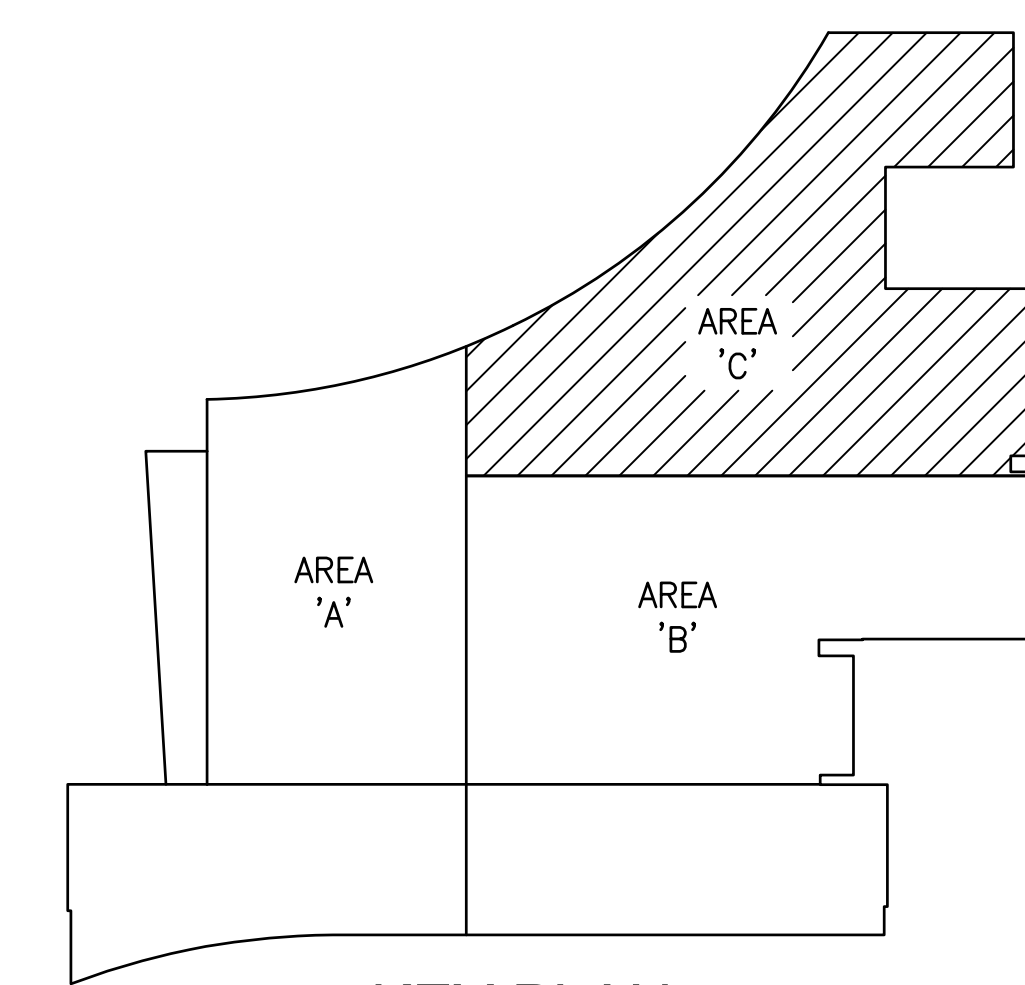
G:\PROJECTS\20-2756-112-DESIGN\1-ELECTRICAL\DEMO.DWG RYANK



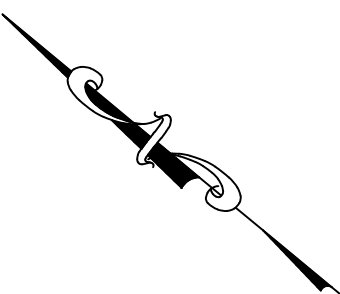
FLOOR PLAN - LEVEL 2
SCALE: 1/8" = 1'-0"

DRAWING NOTES:

1. EXTEND EXISTING UNIT HEATER 120V CIRCUIT TO NEW UNIT HEATER UH-5. PROVIDE TOGGLE SWITCH DISCONNECT AND CONNECTIONS.



KEY PLAN



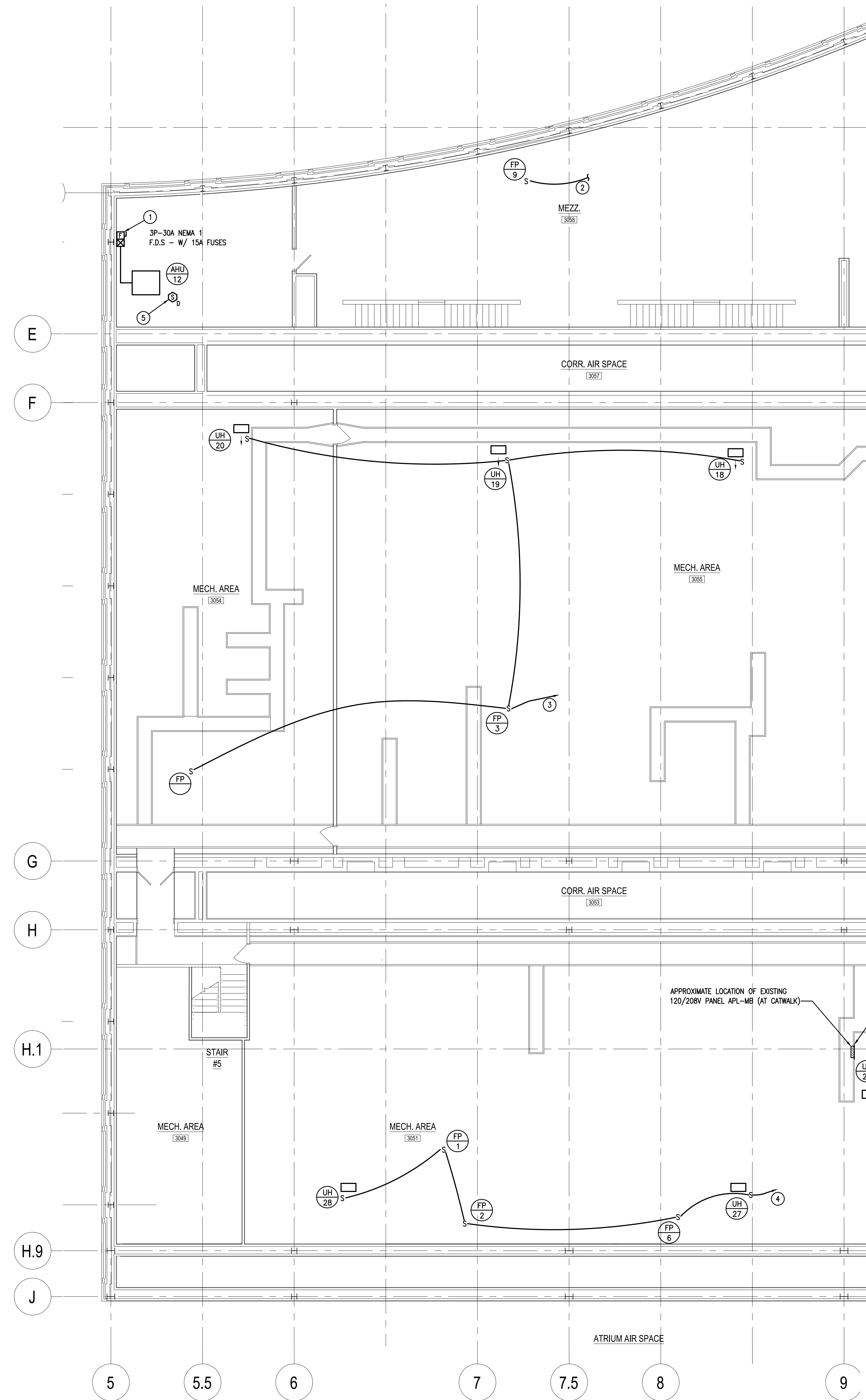
CONSOLIDATED ENGINEERS
102 James Drive
Leesport, PA 19533
Tel: 610-916-1600 Fax: 610-916-1610
Internet: www.consolidatedengineers.com



AEM ARCHITECTS INC.
3700 PERKALOMEN AVENUE, READING, PA 19608-2755
Phone: 610-755-3200 Fax: 610-755-3242
www.aemarch.com

ELECTRICAL LEVEL 2 - AREA 'C'
STEAM BOILER REPLACEMENT FOR ENERSYS
2366 BERNVILLE ROAD, BERN TOWNSHIP, BERKS COUNTY, PENNSYLVANIA

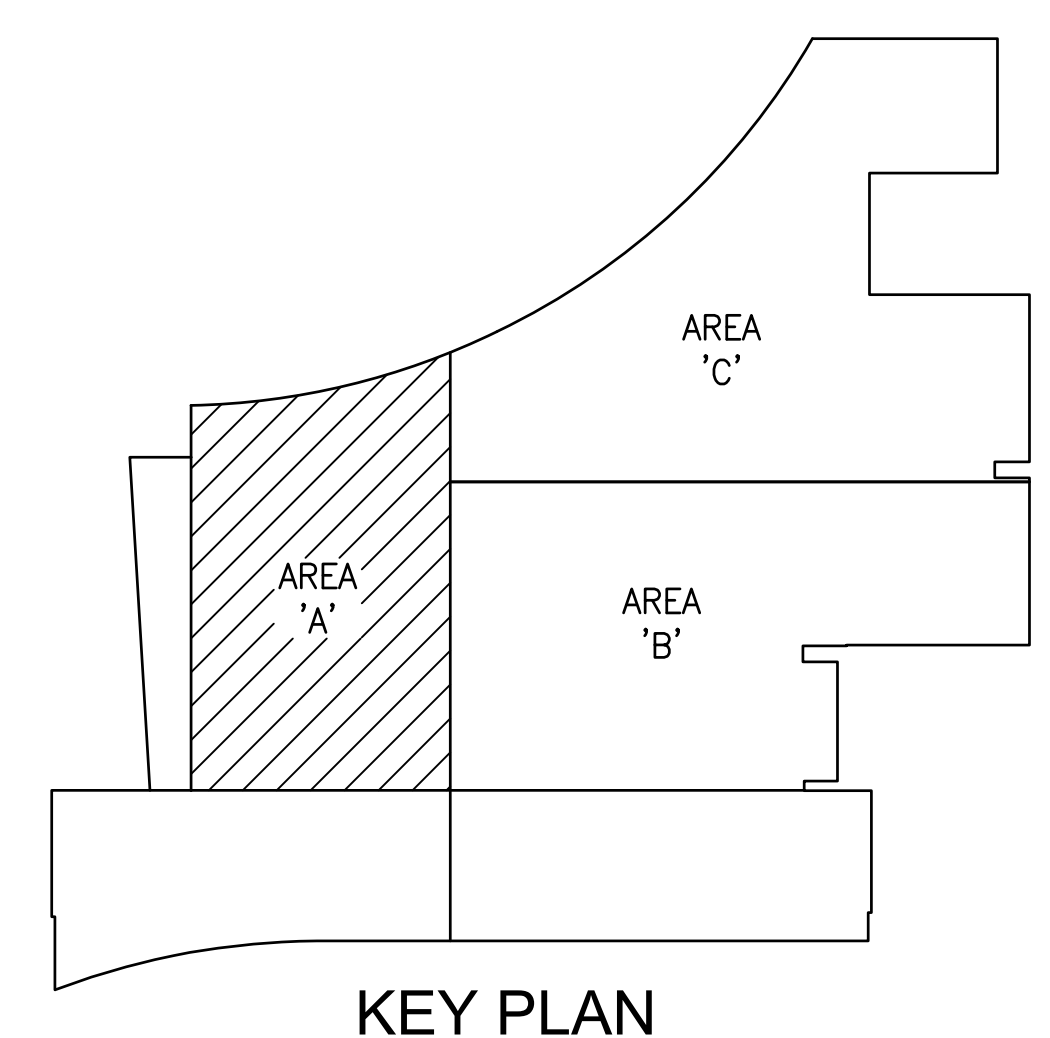
ALL DIMENSIONS AND EXISTING CONDITIONS SHALL BE CHECKED AND VERIFIED BY THE CONTRACTOR AT THE SITE.
JOB NO.: 18037.03
DRAWN BY: RK
DATE: 07.23.20

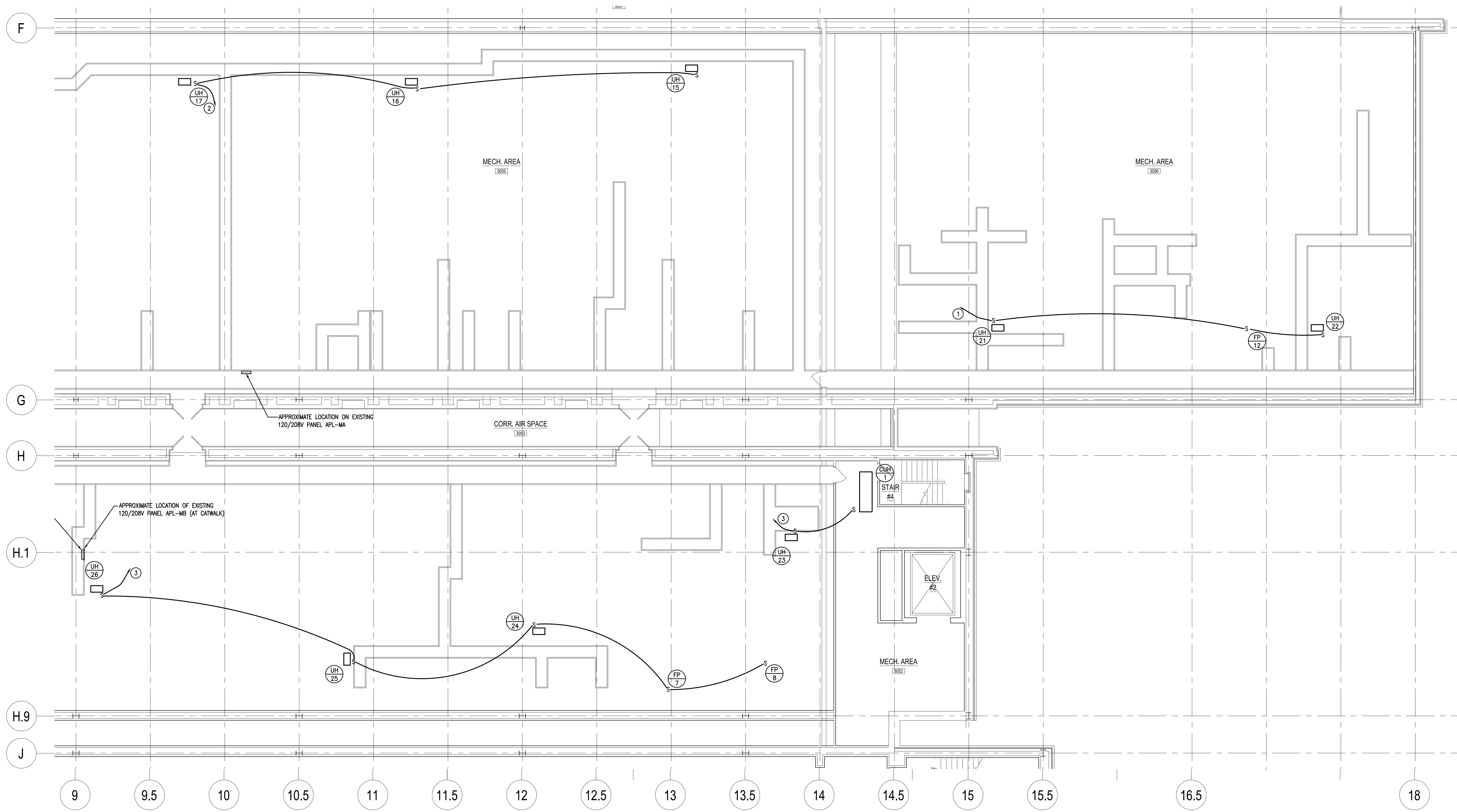


FLOOR PLAN - LEVEL 3
SCALE: 1/8" = 1'-0"

DRAWING NOTES:

1. MODIFY, EXTEND EXISTING 480V, 3Ø 20A CIRCUIT TO NEW AHU-12. PROVIDE CONNECTIONS.
2. 2#12W/#10GRD. TO FP4 ON DWG. E-8
3. RUN 2#10W/#10GRD TO EXISTING PANEL APL-MA ADD 1P-20A CIRCUIT BREAKER.
4. RUN 2#12W/#12GRD. TO EXISTING PANEL APL-MB ADD 1P-20A CIRCUIT BREAKER.
5. DUCT MOUNTED SMOKE DETECTOR FURNISHED AND WIRED BY E.C. DETECTOR INSTALLED BY H.C. CONNECT TO EXISTING SIMPLEX/JCI FIRE ALARM SYSTEM.

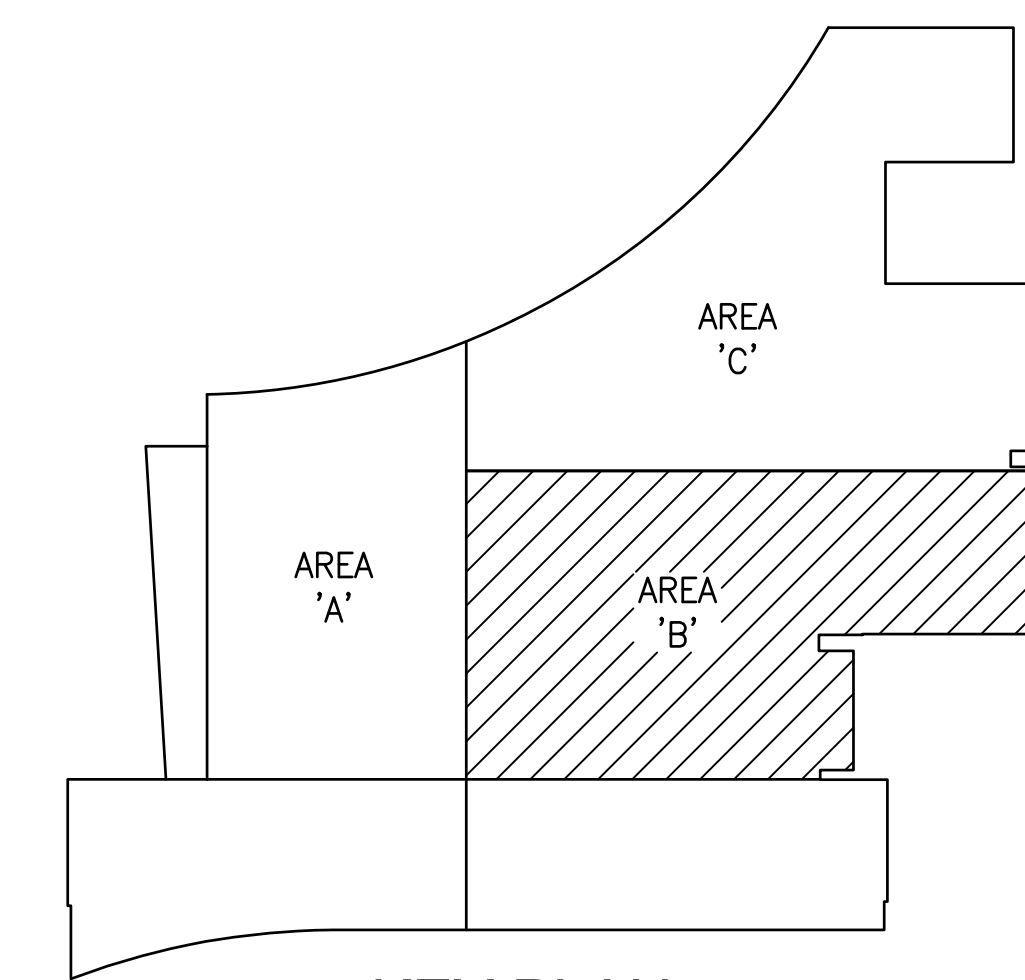




FLOOR PLAN - LEVEL 3
SCALE: 1/8" = 1'-0"

DRAWING NOTES:

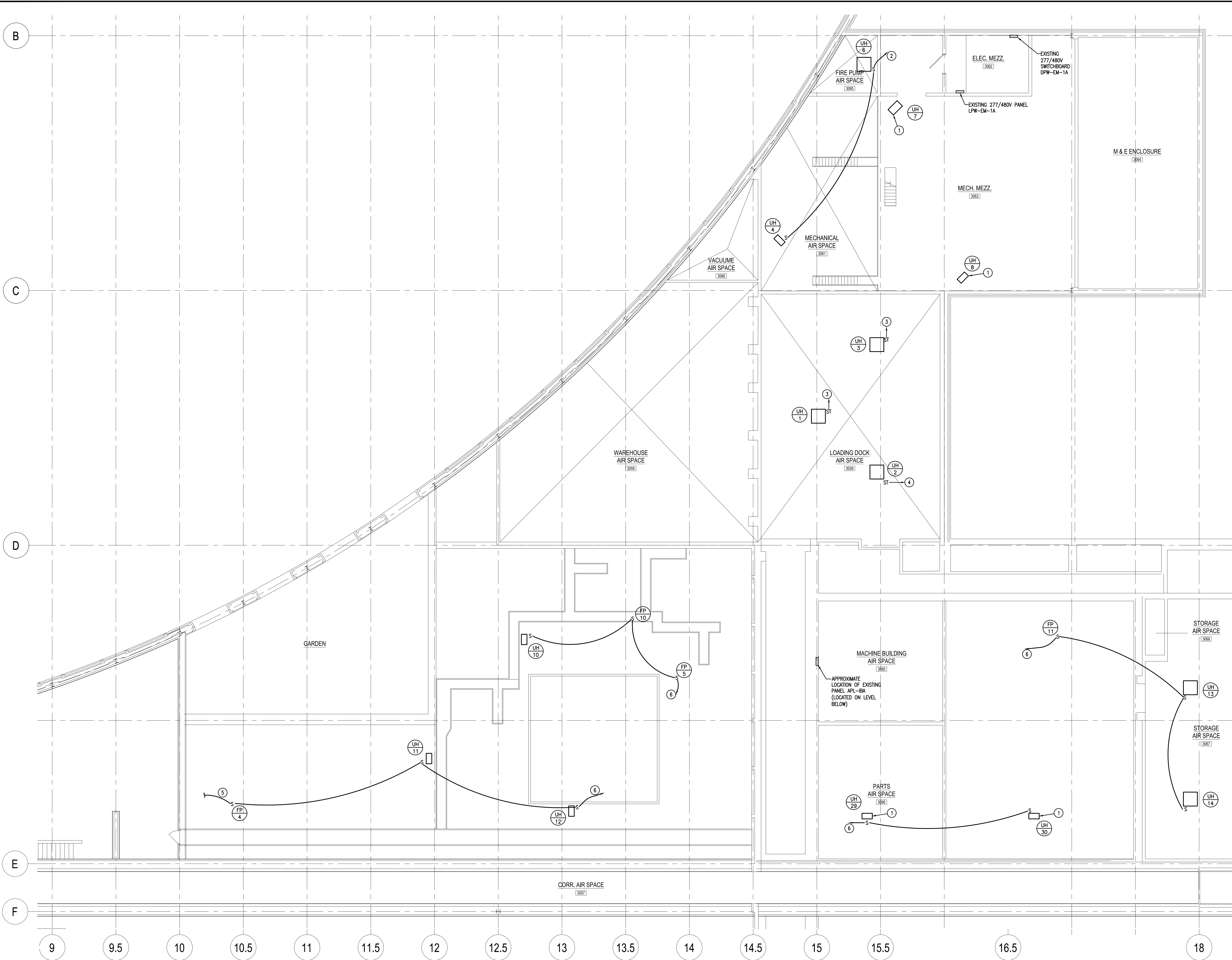
1. RUN 2#10W/#10GRD. TO EXISTING PANEL APL-MA ADD 1P-20A CIRCUIT BREAKER.
2. RUN 2#12W/#12GRD. TO EXISTING PANEL APL-MA ADD 1P-20A CIRCUIT BREAKER.
3. RUN 2#12W/#12GRD. TO EXISTING PANEL APL-MB ADD 1P-20A CIRCUIT BREAKER.



KEY PLAN



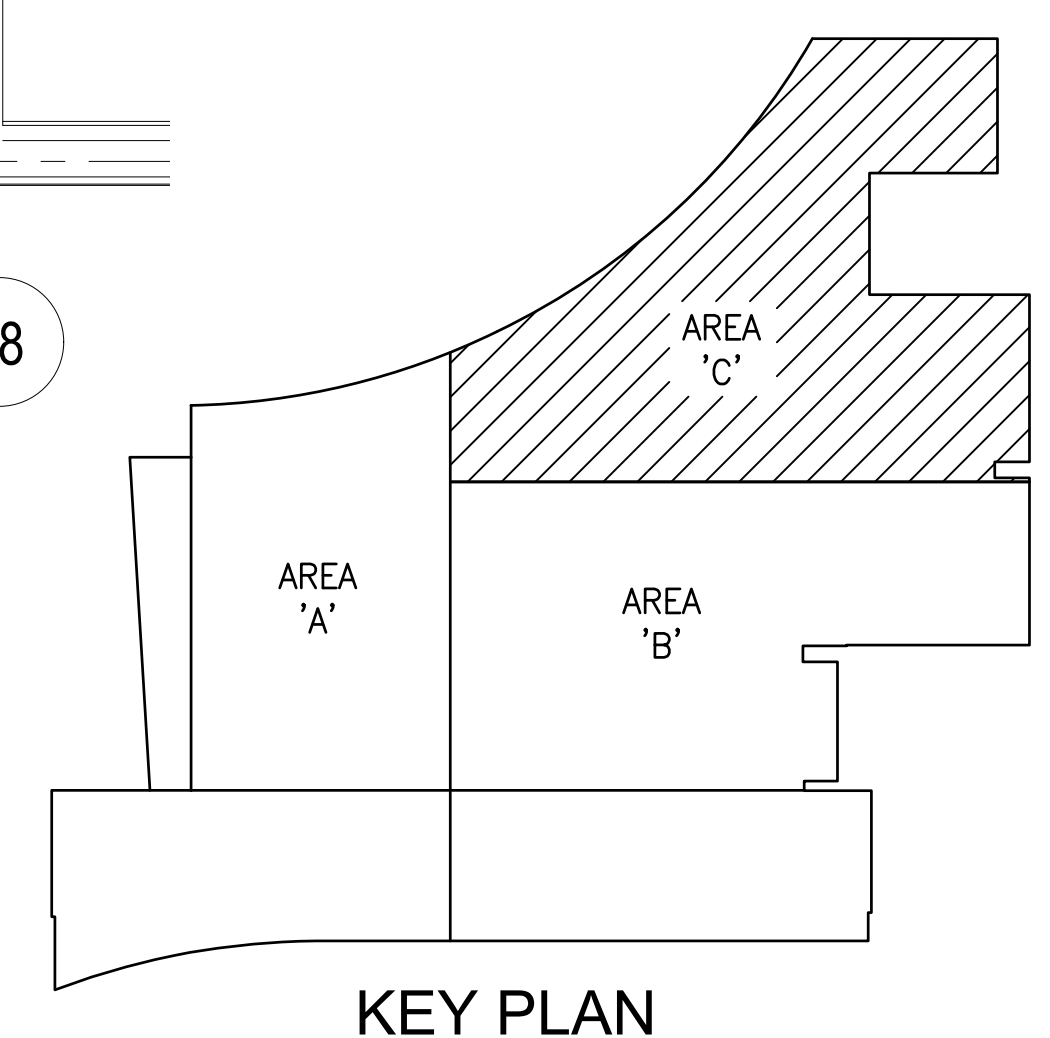
G:\PROJECTS\20-2756-112-DESIGN\1-ELECTE_NEW.DWG RYANK



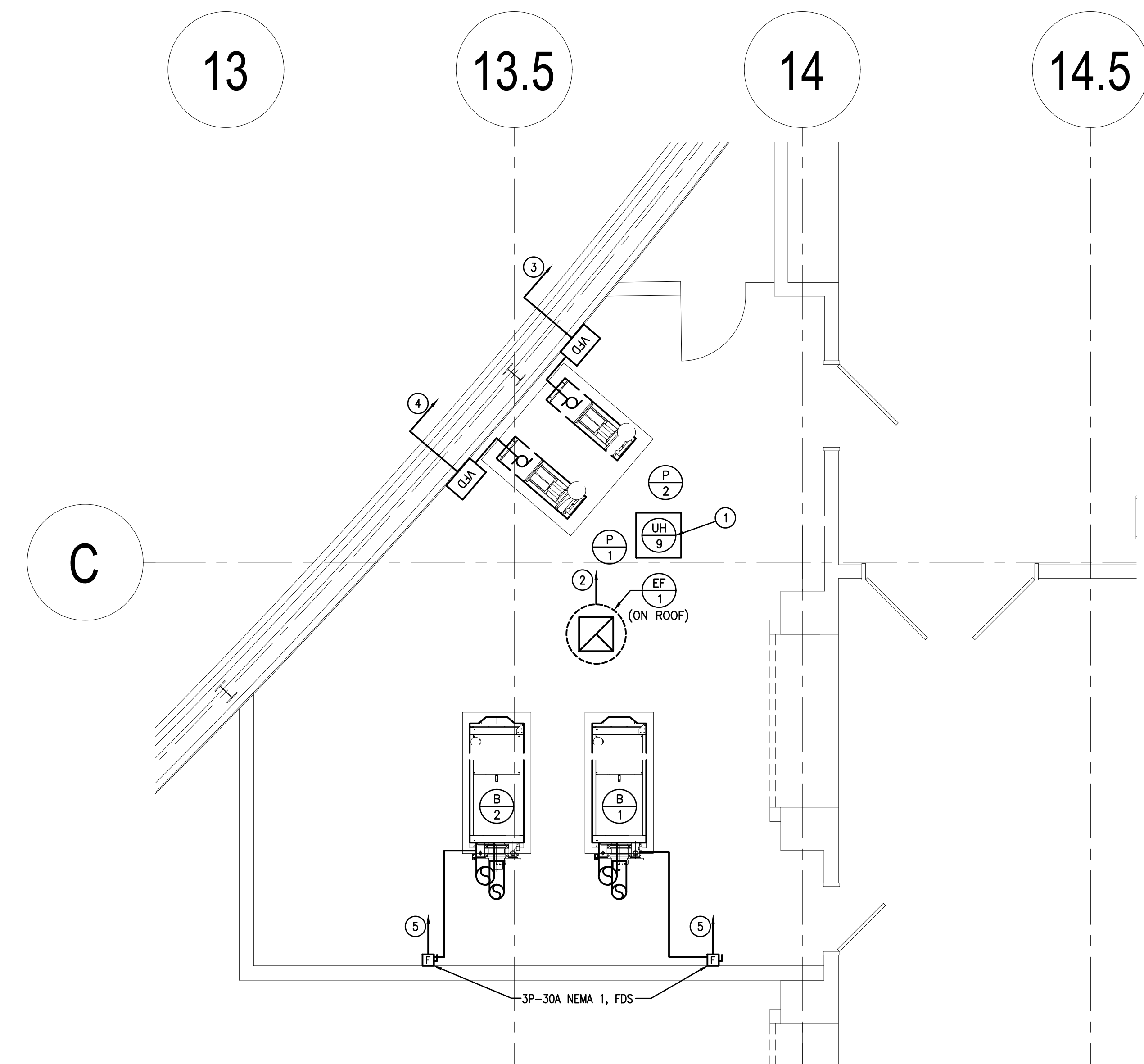
DRAWING NOTES:

1. MODIFY / EXTEND EXISTING 120V 1Ø CIRCUIT TO NEW UNIT HEATER. PROVIDE TOGGLE SWITCH DISCONNECT SWITCH AND CONNECTIONS.
2. RUN 2#12W/12GRD. - 3/4" TO EXISTING PANEL APL-1A (FLOOR BELOW). CONNECT TO EXISTING 1P-20A "OFF" CIRCUIT BREAKER.
3. RUN 2#10W/10GRD. - 3/4" TO EXISTING PANEL APL-1A (FLOOR BELOW). REMOVE EXISTING 2P-50A ("OFF") CIRCUIT BREAKER AND PROVIDE NEW 1P-30A CIRCUIT BREAKER.
4. RUN 2#10W/10GRD. - 3/4" TO EXISTING PANEL APL-1A (FLOOR BELOW). CONNECT TO EXISTING 1P-30A ("OFF") CIRCUIT BREAKER.
5. 2#10W/10GRD. TO FPS ON DWG. E-6
6. RUN 2#10W/10GRD. TO EXISTING PANEL APL-1BA. REMOVE EXISTING 3 POLE ("OFF") CIRCUIT BREAKER AND PROVIDE NEW 1P-20A CIRCUIT BREAKER.

FLOOR PLAN - LEVEL 3
SCALE: 1/8" = 1'-0"



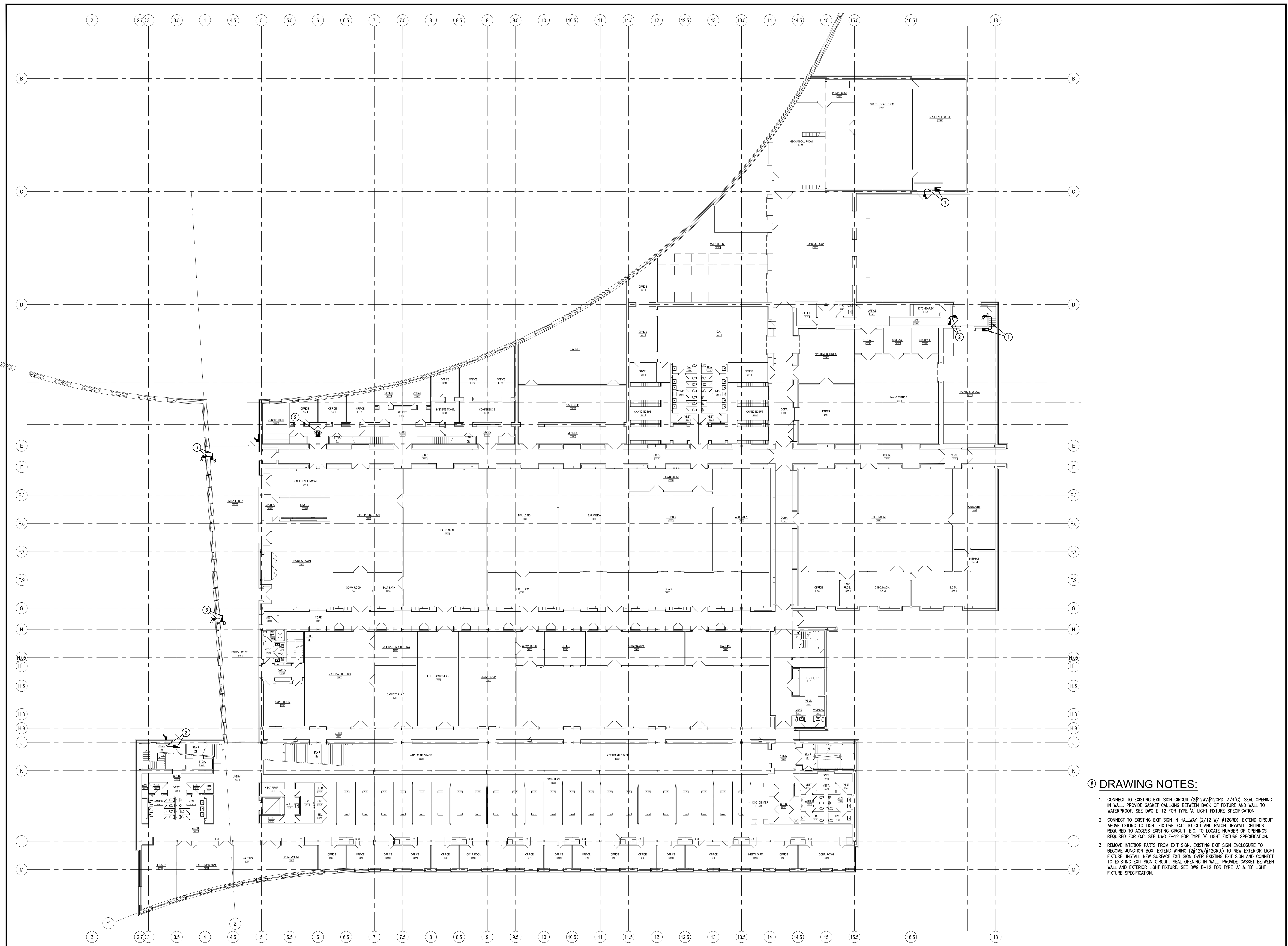
G:\PROJECTS\20-2755-112-DESIGN\1-ELECTR_NEW.DWG RYANK



FLOOR PLAN - LEVEL 2
SCALE: 1/8" = 1'-0"

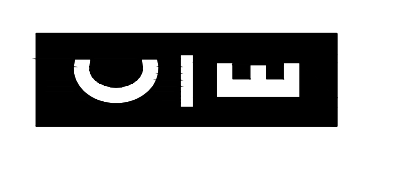
DRAWING NOTES:

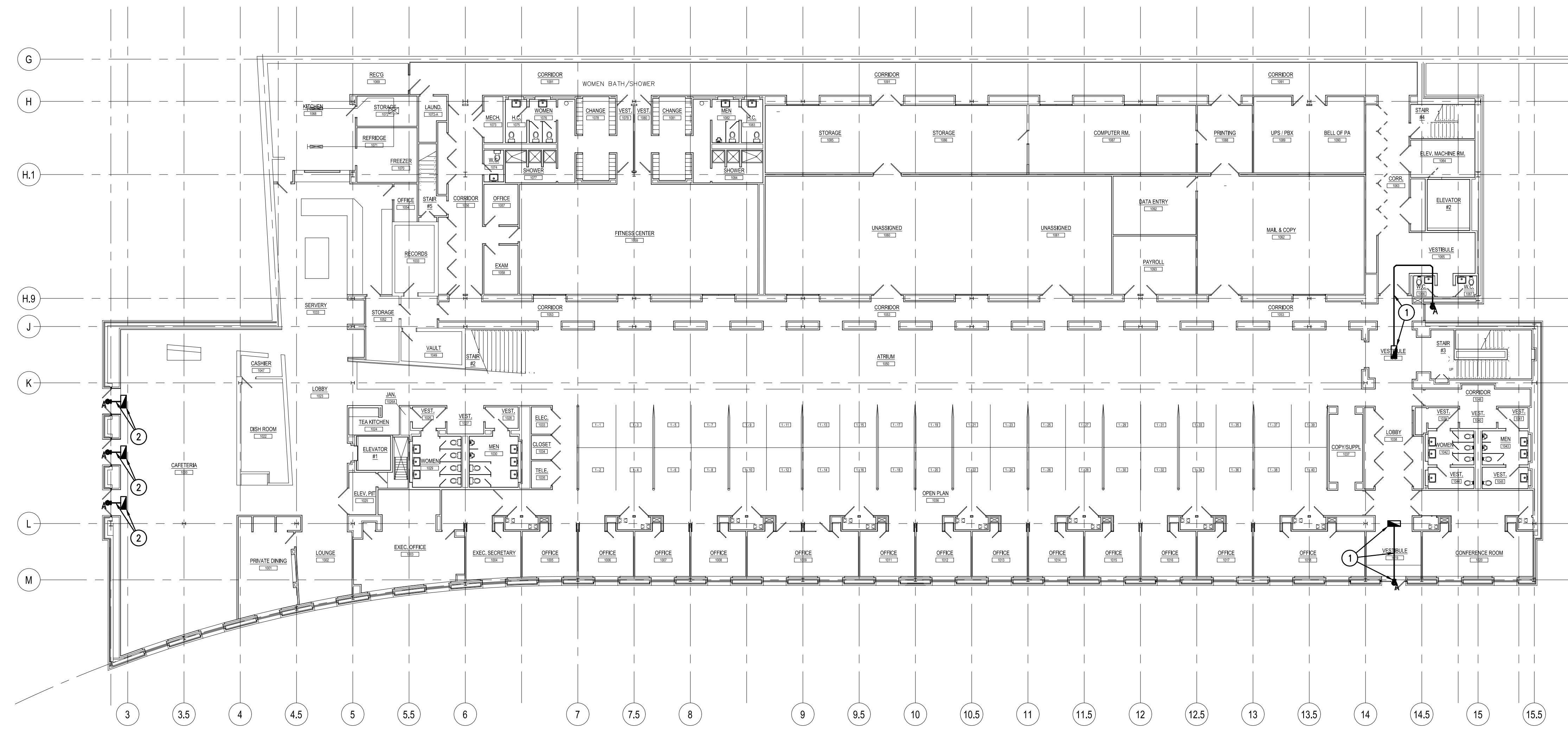
1. EXTEND EXISTING UNIT HEATER 120V CIRCUIT TO NEW UNIT HEATER UH-19. PROVIDE TOGGLE SWITCH DISCONNECT SWITCH AND CONNECTIONS.
2. RUN 2#12W/#12GRD. - 3/4" TO EXISTING PANEL APL-1A, ADD 1P-20A CIRCUIT BREAKER.
3. RUN 3#4W/#8GRD. - 1" TO EXISTING 277/480V SWITCHBOARD DPH-EM-1A. CONNECT TO EXISTING 100A FUSED BUCKET SWITCH ("OFF"). PROVIDE 70A FUSES. LABEL BUCKET "PUMP-1"
4. RUN 3#4W/#8GRD. - 1" TO EXISTING 277/480V SWITCHBOARD DPH-EM-1A. REMOVE EXISTING 3P-60A FUSED BUCKET SWITCH ("OFF"). ADD REPLACE WITH 3P-100A FUSED BUCKET SWITCH. PROVIDE 70A FUSES. LABEL BUCKET "PUMP P-2"
5. RUN 3#10W/#10GRD. TO EXISTING 277/480V PANEL LPH-EM-1A. REMOVE EXISTING 3POLE ("OFF") CIRCUIT BREAKER AND PROVIDE NEW 3P-30A CIRCUIT BREAKER. LABEL CIRCUIT BREAKER "BOILER B-1" AND "B-2" RESPECTIVELY.



FLOOR PLAN - LEVEL 2
SCALE: 1/16" = 1'-0"

- ① DRAWING NOTES:**
- CONNECT TO EXISTING EXIT SIGN CIRCUIT (2#12W/#12GRD, 3/4"). SEAL OPENING IN WALL. PROVIDE GASKET CAULKING BETWEEN BACK OF FIXTURE AND WALL TO WATERPROOF. SEE DWG E-12 FOR TYPE 'A' LIGHT FIXTURE SPECIFICATION.
 - CONNECT TO EXISTING EXIT SIGN IN HALLWAY (2/12 W/#12GRD). EXTEND CIRCUIT ABOVE CEILING TO LIGHT FIXTURE. G.C. TO CUT AND PATCH DRYWALL CEILINGS REQUIRED TO ACCESS EXISTING CIRCUIT. E.C. TO LOCATE NUMBER OF OPENINGS REQUIRED FOR G.C. SEE DWG E-12 FOR TYPE 'A' LIGHT FIXTURE SPECIFICATION.
 - REMOVE INTERIOR PARTS FROM EXIT SIGN. EXISTING EXIT SIGN ENCLOSURE TO BECOME JUNCTION BOX. EXTEND WIRING (2#12W/#12GRD.) TO NEW EXTERIOR LIGHT FIXTURE. INSTALL NEW SURFACE EXIT SIGN OVER EXISTING EXIT SIGN AND CONNECT TO EXISTING EXIT SIGN CIRCUIT. SEAL OPENING IN WALL. PROVIDE GASKET BETWEEN WALL AND EXTERIOR LIGHT FIXTURE. SEE DWG E-12 FOR TYPE 'A' & 'B' LIGHT FIXTURE SPECIFICATION.





FLOOR PLAN - LEVEL 1
SCALE: 1/16" = 1'-0"

DRAWING NOTES:

- CONNECT TO EXISTING EXIT SIGN IN HALLWAY (2#12W/#12GRD.). EXTEND CIRCUIT ABOVE HALLWAY DRYWALL CEILING TO LIGHT FIXTURE. G.C. TO CUT AND PATCH OPENINGS REQUIRED TO FISH WIRE ABOVE CEILING. E.C. TO LOCATE NUMBER OF OPENINGS REQUIRED FOR G.C. TO CUT AND PATCH. SEAL OPENINGS IN WALL.
- CONNECT TO EXISTING EXIT SIGN IN LOBBY (2#12W/#12GRD.). SEAL OPENINGS IN WALL. PROVIDE GASKET CALKING BETWEEN BACK OF FIXTURE AND WALL.

LIGHTING FIXTURE SCHEDULE						
TYPE	MANUFACTURER	CATALOG NUMBER	WATTS	VOLTS	MOUNTING	REMARKS
A	GARDCO	111L-16L-750-NW-G24-PCB-CC	1	UNV.	SURFACE	PROVIDE CUSTOM COLOR
B	LITHONIA	LESSBIG	1	120/277	SURFACE	EXIT SIGN BLACK ON BLACK

